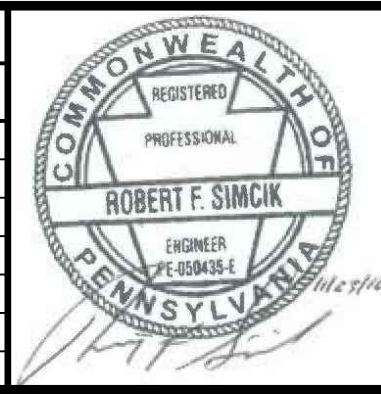


- NOTES:**
- SEE ES-0.01 & ES-0.02 FOR GENERAL NOTES & LEGEND.
  - SEE ES-0.03 FOR STREAM & WETLAND CROSSING TABLES.
  - BMP INSTALLATION TO BE ADJUSTED AS NEEDED TO ACCOMMODATE ACTUAL CONTOURS IDENTIFIED IN FIELD DURING VARIOUS PHASES OF THE PROJECT.
  - FOR SURFACE WATER WITHDRAWALS, TEMPORARY PUMP AND ASSOCIATED EQUIPMENT (OTHER THAN THE TEMPORARY HOSES/PIPING AND INTAKE SCREEN) WILL BE LOCATED OUT OF THE 100-YEAR FLOODWAY. ALL TEMPORARY HOSES/PIPING AND INTAKE SCREENS WILL BE REMOVED FROM THE FLOODWAY WHEN NOT IN USE. NO DREDGING OR FILLING ACTIVITIES CAN BE COMPLETED WITHIN THE 100-YEAR FLOODWAY WITHOUT ADDITIONAL PERMITS.

REVISIONS			
NO.	BY	DATE	REMARKS



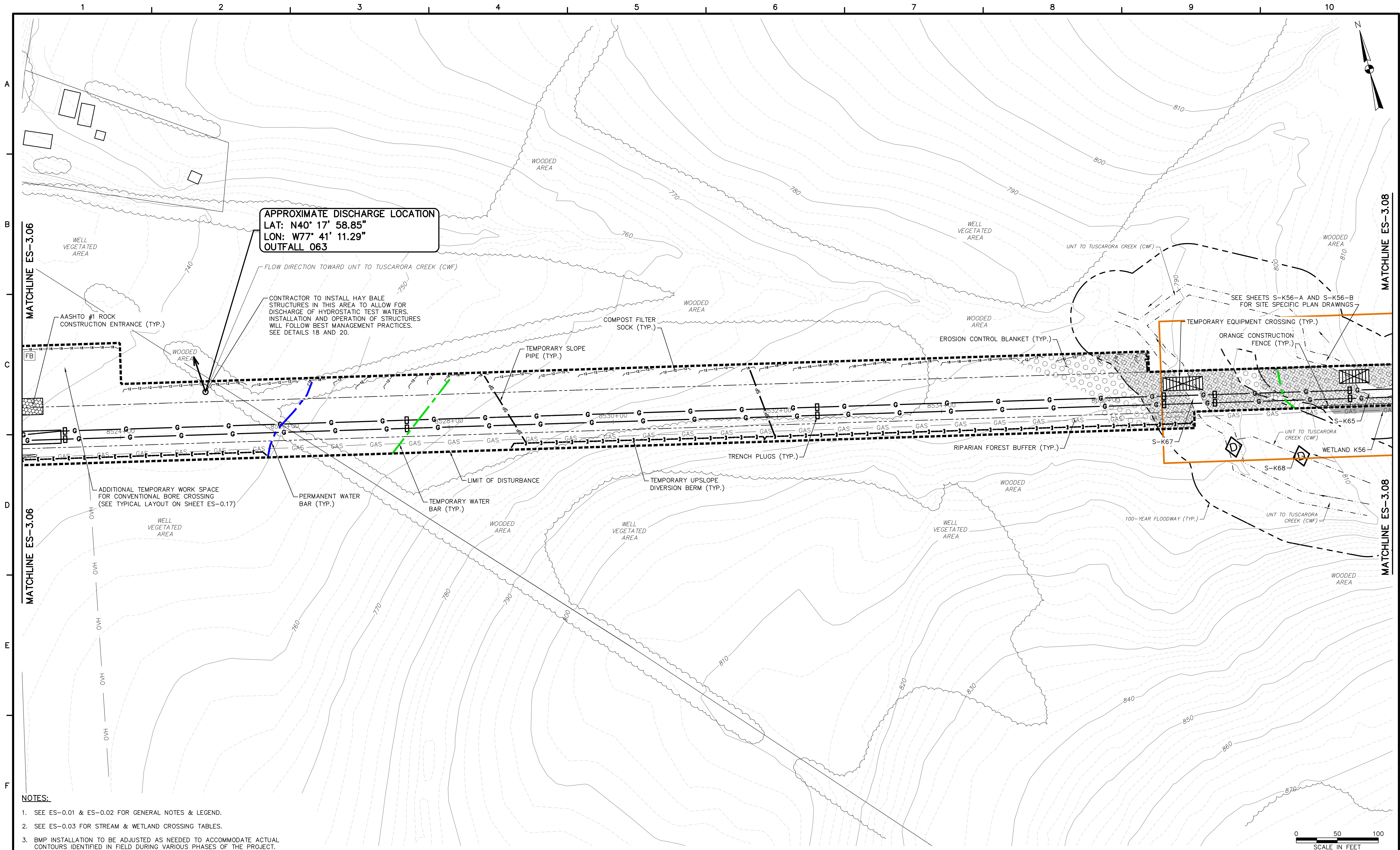
SUNOCO PIPELINE L.P.  
SINKING SPRING, PENNSYLVANIA  
**PENNSYLVANIA PIPELINE PROJECT  
CONSTRUCTION SPREAD 3**

1-16" & 1-20" PROPOSED WELDED STEEL NATURAL GAS LIQUIDS PIPELINES  
JUNIATA COUNTY CONSERVATION DISTRICT  
EROSION & SEDIMENT CONTROL &  
SITE RESTORATION PLAN  
SHEET 5 OF 10

DATE:	NOVEMBER 2016
PROJECT NO.:	112IC05958
DESIGNED BY:	JB
DRAWN BY:	BH
CHECKED BY:	RS
COPYRIGHT TETRA TECH INC.	
<b>ES-3.05</b>	
SHEET 3.05 OF 35	



0 50 100  
SCALE IN FEET



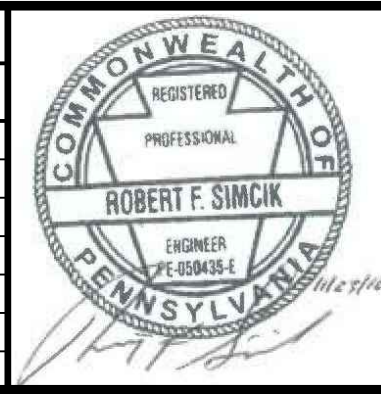
**APPROXIMATE DISCHARGE LOCATION**  
 LAT: N40° 17' 58.85"  
 LON: W77° 41' 11.29"  
 OUTFALL 063

CONTRACTOR TO INSTALL HAY BALE STRUCTURES IN THIS AREA TO ALLOW FOR DISCHARGE OF HYDROSTATIC TEST WATERS. INSTALLATION AND OPERATION OF STRUCTURES WILL FOLLOW BEST MANAGEMENT PRACTICES. SEE DETAILS 18 AND 20.

- NOTES:**
- SEE ES-0.01 & ES-0.02 FOR GENERAL NOTES & LEGEND.
  - SEE ES-0.03 FOR STREAM & WETLAND CROSSING TABLES.
  - BMP INSTALLATION TO BE ADJUSTED AS NEEDED TO ACCOMMODATE ACTUAL CONTOURS IDENTIFIED IN FIELD DURING VARIOUS PHASES OF THE PROJECT.

**TETRA TECH**  
 www.tetrattech.com  
 661 ANDERSEN DRIVE - FOSTER PLAZA 7  
 PITTSBURGH, PA 15220  
 T: (412) 921-7090 | F: (412) 921-4040

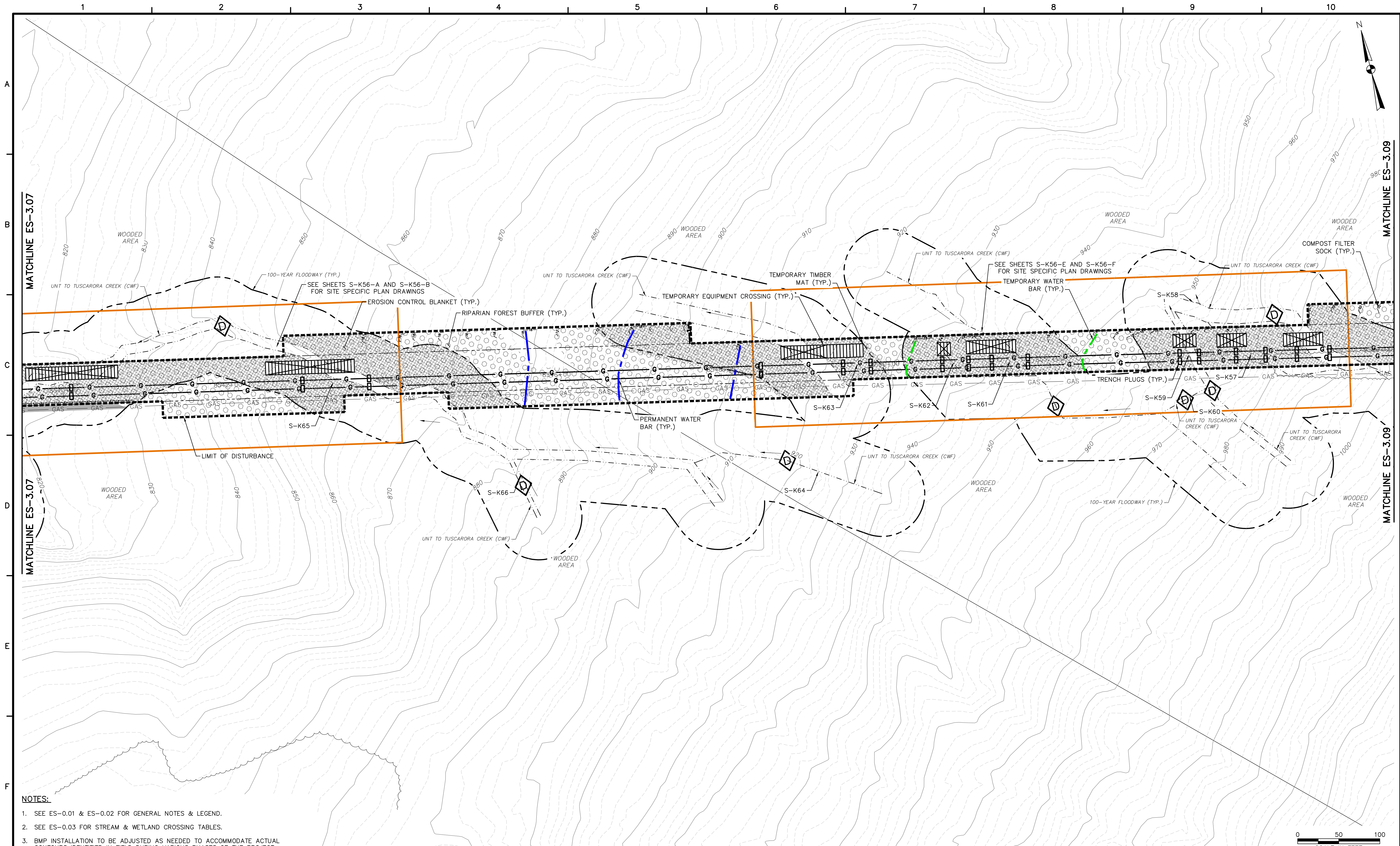
REVISIONS			
NO.	BY	DATE	REMARKS



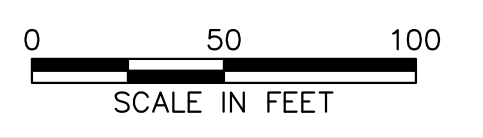
**SUNOCO PIPELINE L.P.**  
 SINKING SPRING, PENNSYLVANIA  
**PENNSYLVANIA PIPELINE PROJECT**  
 CONSTRUCTION SPREAD 3

1-16" & 1-20" PROPOSED WELDED STEEL NATURAL GAS LIQUIDS PIPELINES  
**JUNIATA COUNTY CONSERVATION DISTRICT**  
 EROSION & SEDIMENT CONTROL &  
 SITE RESTORATION PLAN  
 SHEET 7 OF 10

DATE:	NOVEMBER 2016
PROJECT NO.:	112IC05958
DESIGNED BY:	JB
DRAWN BY:	BH
CHECKED BY:	RS
COPYRIGHT TETRA TECH INC.	
<b>ES-3.07</b>	
SHEET 3.07 OF 35	

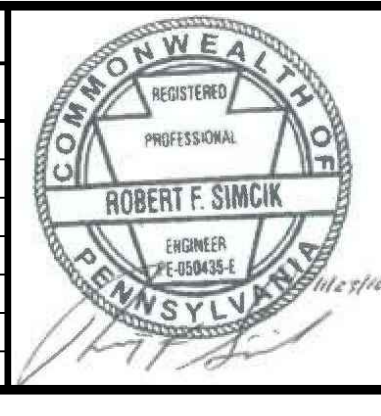


- NOTES:**
- SEE ES-0.01 & ES-0.02 FOR GENERAL NOTES & LEGEND.
  - SEE ES-0.03 FOR STREAM & WETLAND CROSSING TABLES.
  - BMP INSTALLATION TO BE ADJUSTED AS NEEDED TO ACCOMMODATE ACTUAL CONTOURS IDENTIFIED IN FIELD DURING VARIOUS PHASES OF THE PROJECT.



**TETRA TECH**  
www.tetrattech.com  
661 ANDERSEN DRIVE - FOSTER PLAZA 7  
PITTSBURGH, PA 15220  
T: (412) 921-7090 | F: (412) 921-4040

REVISIONS			
NO.	BY	DATE	REMARKS



SUNOCO PIPELINE L.P.  
SINKING SPRING, PENNSYLVANIA  
**PENNSYLVANIA PIPELINE PROJECT  
CONSTRUCTION SPREAD 3**

1-16" & 1-20" PROPOSED WELDED STEEL NATURAL GAS LIQUIDS PIPELINES  
**JUNIATA COUNTY CONSERVATION DISTRICT  
EROSION & SEDIMENT CONTROL &  
SITE RESTORATION PLAN  
SHEET 8 OF 10**

DATE:	NOVEMBER 2016
PROJECT NO.:	112IC05958
DESIGNED BY:	JB
DRAWN BY:	BH
CHECKED BY:	RS
COPYRIGHT TETRA TECH INC.	
<b>ES-3.08</b>	
SHEET 3.08 OF 35	