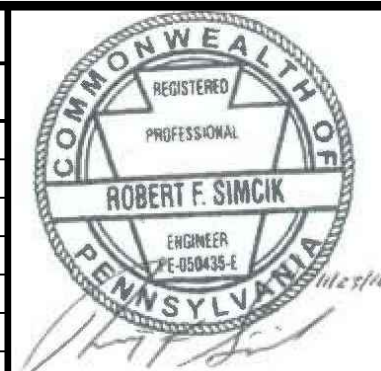


- NOTES:**
- SEE ES-0.01 & ES-0.02 FOR GENERAL NOTES & LEGEND.
 - SEE ES-0.03 FOR STREAM & WETLAND CROSSING TABLES.
 - BMP INSTALLATION TO BE ADJUSTED AS NEEDED TO ACCOMMODATE ACTUAL CONTOURS IDENTIFIED IN FIELD DURING VARIOUS PHASES OF THE PROJECT.



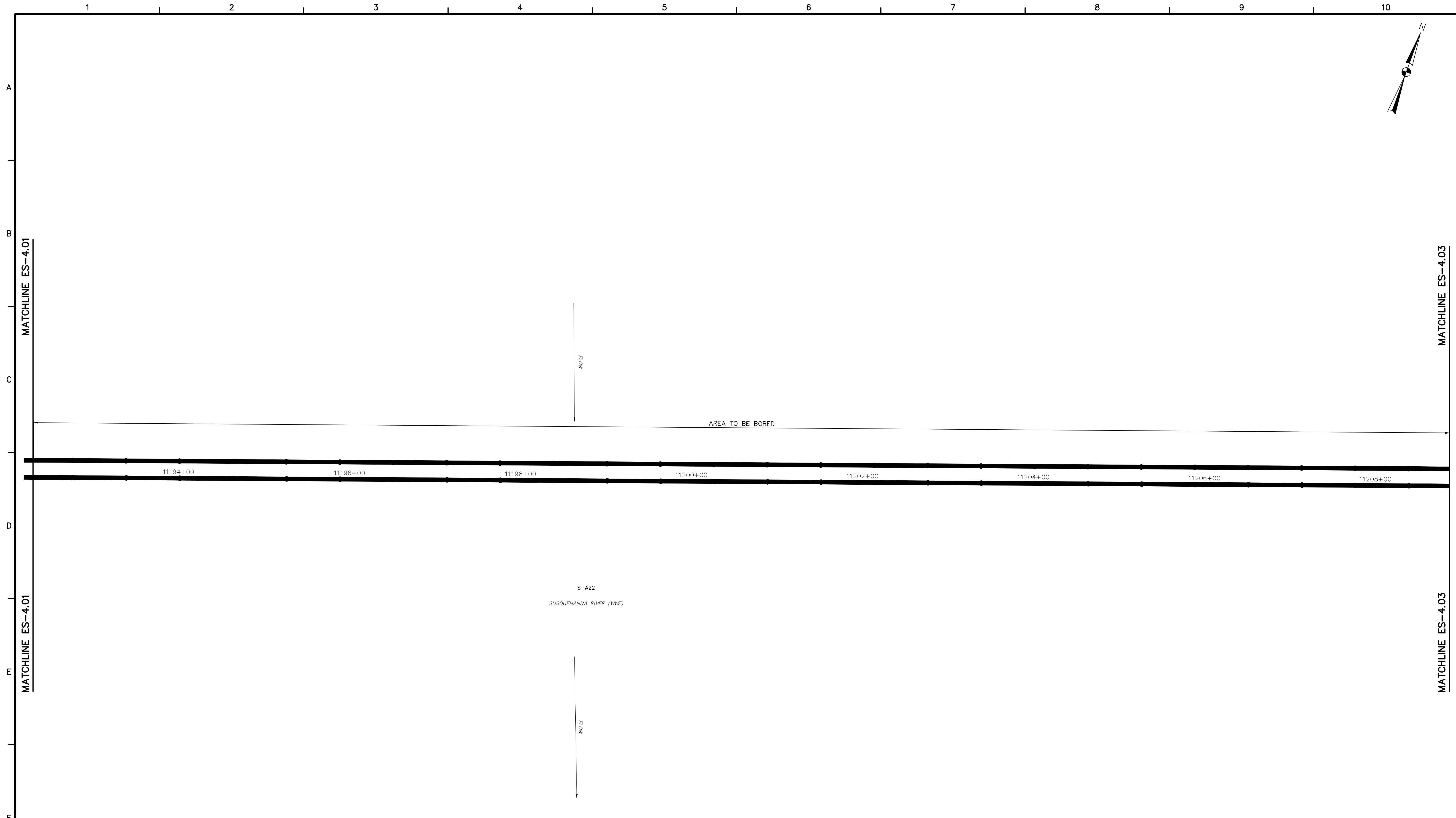
SUNOCO PIPELINE L.P.
 SINKING SPRING, PENNSYLVANIA
 PENNSYLVANIA PIPELINE PROJECT
 CONSTRUCTION SPREAD 4

1-16" & 1-20" PROPOSED WELDED STEEL NATURAL GAS LIQUIDS PIPELINES
 DAUPHIN COUNTY CONSERVATION DISTRICT
 EROSION & SEDIMENT CONTROL &
 SITE RESTORATION PLAN
 SHEET 1 OF 39

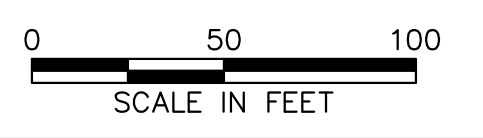
DATE:	NOVEMBER 2016
PROJECT NO.:	112IC05958
DESIGNED BY:	JB
DRAWN BY:	BH
CHECKED BY:	RS
COPYRIGHT TETRA TECH INC.	
ES-4.01	
SHEET 4.01 OF 63	

TETRA TECH
 www.tetrattech.com
 661 ANDERSEN DRIVE - FOSTER PLAZA 7
 PITTSBURGH, PA 15220
 T: (412) 921-7090 | F: (412) 921-4040

REVISIONS			
NO.	BY	DATE	REMARKS

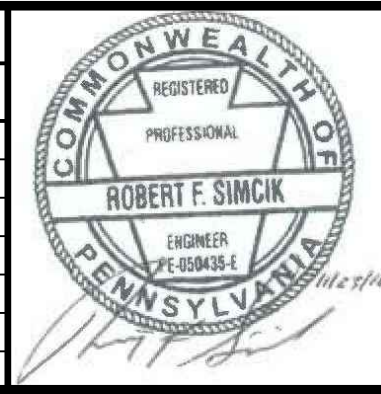


- NOTES:**
1. SEE ES-0.01 & ES-0.02 FOR GENERAL NOTES & LEGEND.
 2. SEE ES-0.03 FOR STREAM & WETLAND CROSSING TABLES.
 3. BMP INSTALLATION TO BE ADJUSTED AS NEEDED TO ACCOMMODATE ACTUAL CONTOURS IDENTIFIED IN FIELD DURING VARIOUS PHASES OF THE PROJECT.



TETRA TECH
www.tetrattech.com
661 ANDERSEN DRIVE - FOSTER PLAZA 7
PITTSBURGH, PA 15220
T: (412) 921-7090 | F: (412) 921-4040

REVISIONS			
NO.	BY	DATE	REMARKS



SUNOCO PIPELINE L.P.
SINKING SPRING, PENNSYLVANIA
**PENNSYLVANIA PIPELINE PROJECT
CONSTRUCTION SPREAD 4**

1-16" & 1-20" PROPOSED WELDED STEEL NATURAL GAS LIQUIDS PIPELINES
DAUPHIN COUNTY CONSERVATION DISTRICT
EROSION & SEDIMENT CONTROL &
SITE RESTORATION PLAN
SHEET 2 OF 39

DATE:	NOVEMBER 2016
PROJECT NO.:	112IC05958
DESIGNED BY:	JB
DRAWN BY:	BH
CHECKED BY:	RS
COPYRIGHT TETRA TECH INC.	
ES-4.02	
SHEET 4.02 OF 63	

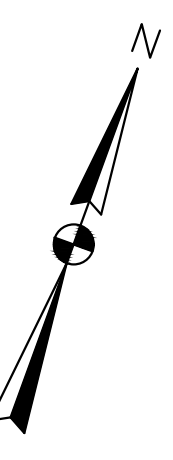
NOTES:

1. SEE ES-0.01 & ES-0.02 FOR GENERAL NOTES & LEGEND.
2. SEE ES-0.03 FOR STREAM & WETLAND CROSSING TABLES.
3. BMP INSTALLATION TO BE ADJUSTED AS NEEDED TO ACCOMMODATE ACTUAL CONTOURS IDENTIFIED IN FIELD DURING VARIOUS PHASES OF THE PROJECT.
4. FOR SURFACE WATER WITHDRAWALS, TEMPORARY PUMP AND ASSOCIATED EQUIPMENT (OTHER THAN THE TEMPORARY HOSES/PIPING AND INTAKE SCREEN) WILL BE LOCATED OUT OF THE 100-YEAR FLOODWAY. ALL TEMPORARY HOSES/PIPING AND INTAKE SCREENS WILL BE REMOVED FROM THE FLOODWAY WHEN NOT IN USE. NO DREDGING OR FILLING ACTIVITIES CAN BE COMPLETED WITHIN 100-YEAR FLOODWAY WITHOUT ADDITIONAL PERMITS.
5. DISCHARGE EQUIPMENT OPTIONS SHOWN IN INSETS B AND C. ONLY ONE WILL BE USED.

STONE ARCH CULVERT FOR BURD RUN. SUPPORTING CAPACITY CALCULATIONS ARE INCLUDED IN ATTACHMENT 8 OF THE EROSION AND SEDIMENTATION CONTROL REPORT.

DETAIL 1: DIRECT DISCHARGE TO RIVER (TYPICAL)

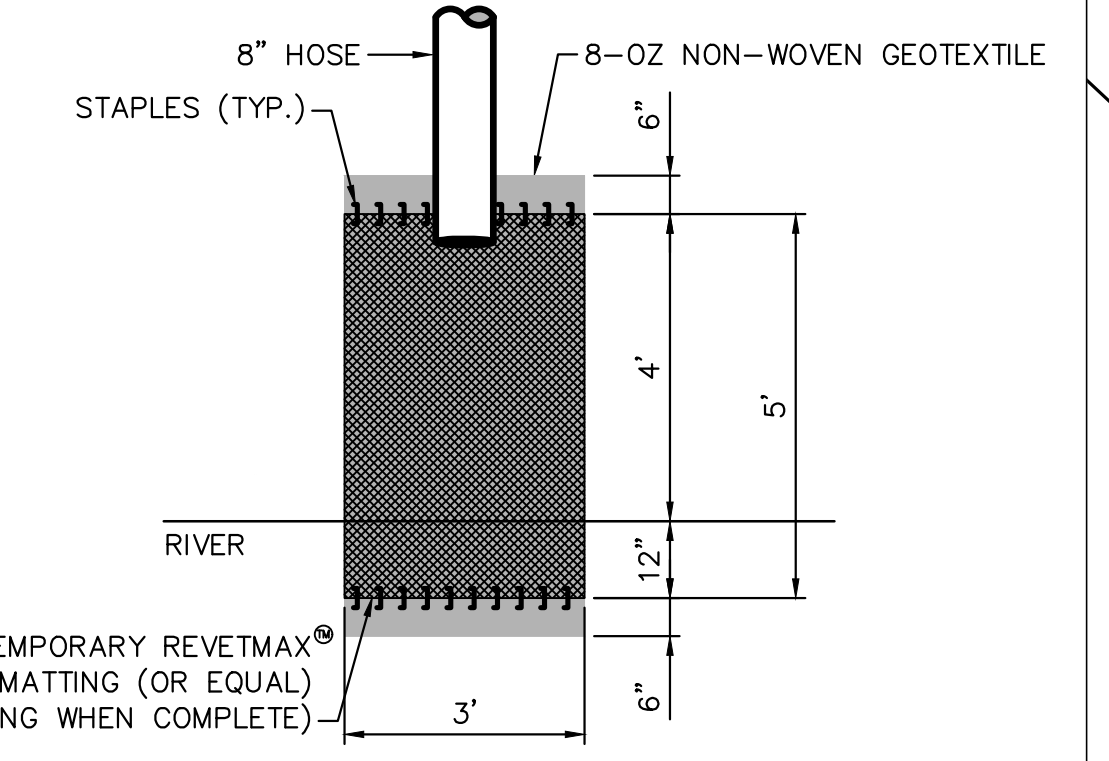
BOROUGH OF HIGHSPIRE
LOWER SWATARA TOWNSHIP



MATCHLINE ES-4.02

MATCHLINE ES-4.04

AREA TO BE USED FOR WITHDRAWAL AND DISCHARGE EQUIPMENT. SEE INSETS A THROUGH C.



NOT TO SCALE

SUSQUEHANNA RIVER (WWF)
S-A22

WOODED AREA

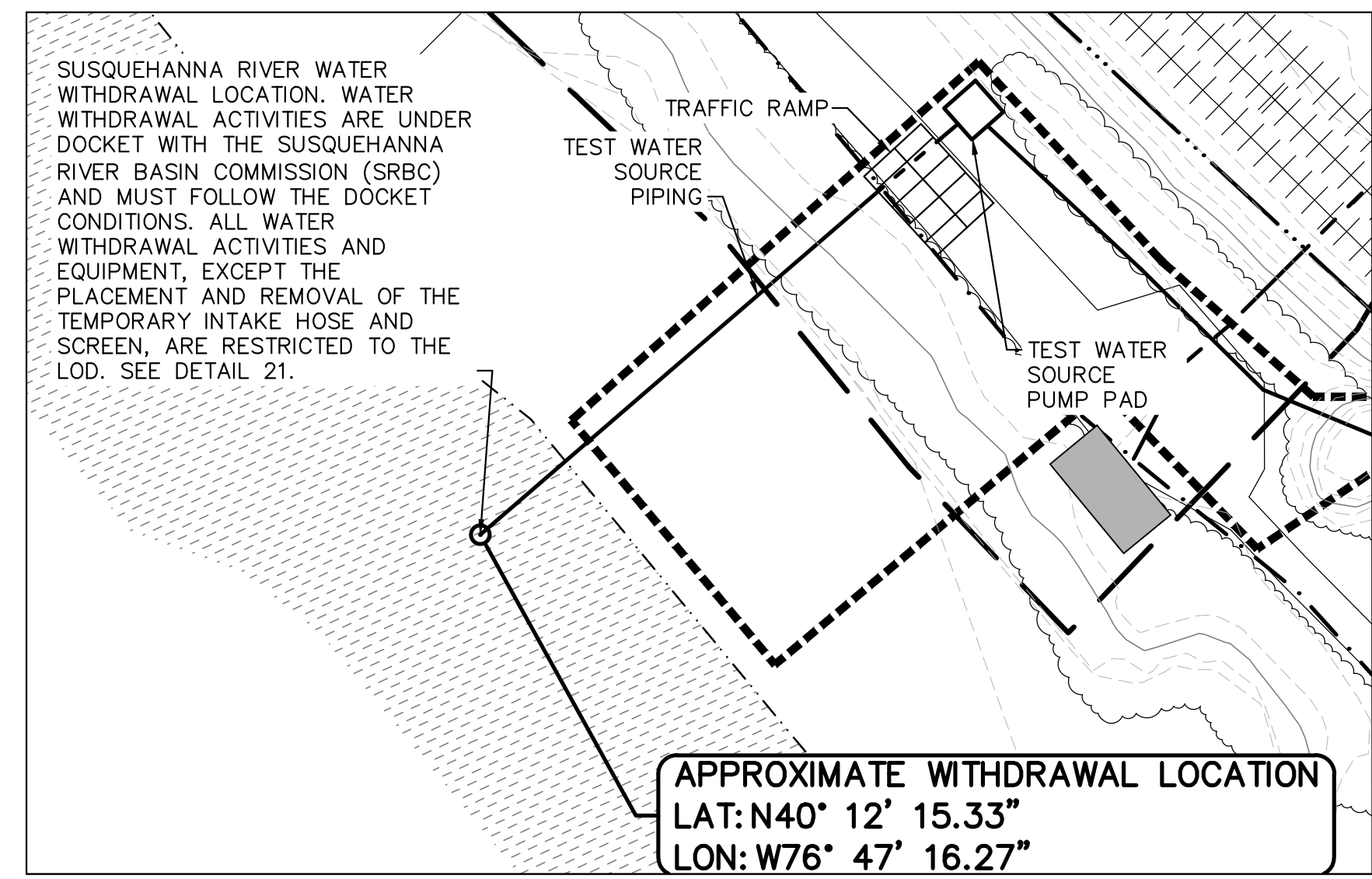
EXISTING TEMPORARY ACCESS ROAD TO BE MAINTAINED ON EXISTING GRADE (ID # PPP-AR-130.1)

100-YEAR FEMA FLOODPLAIN

PIPING FOR TEST WATER TO BE DISCHARGED

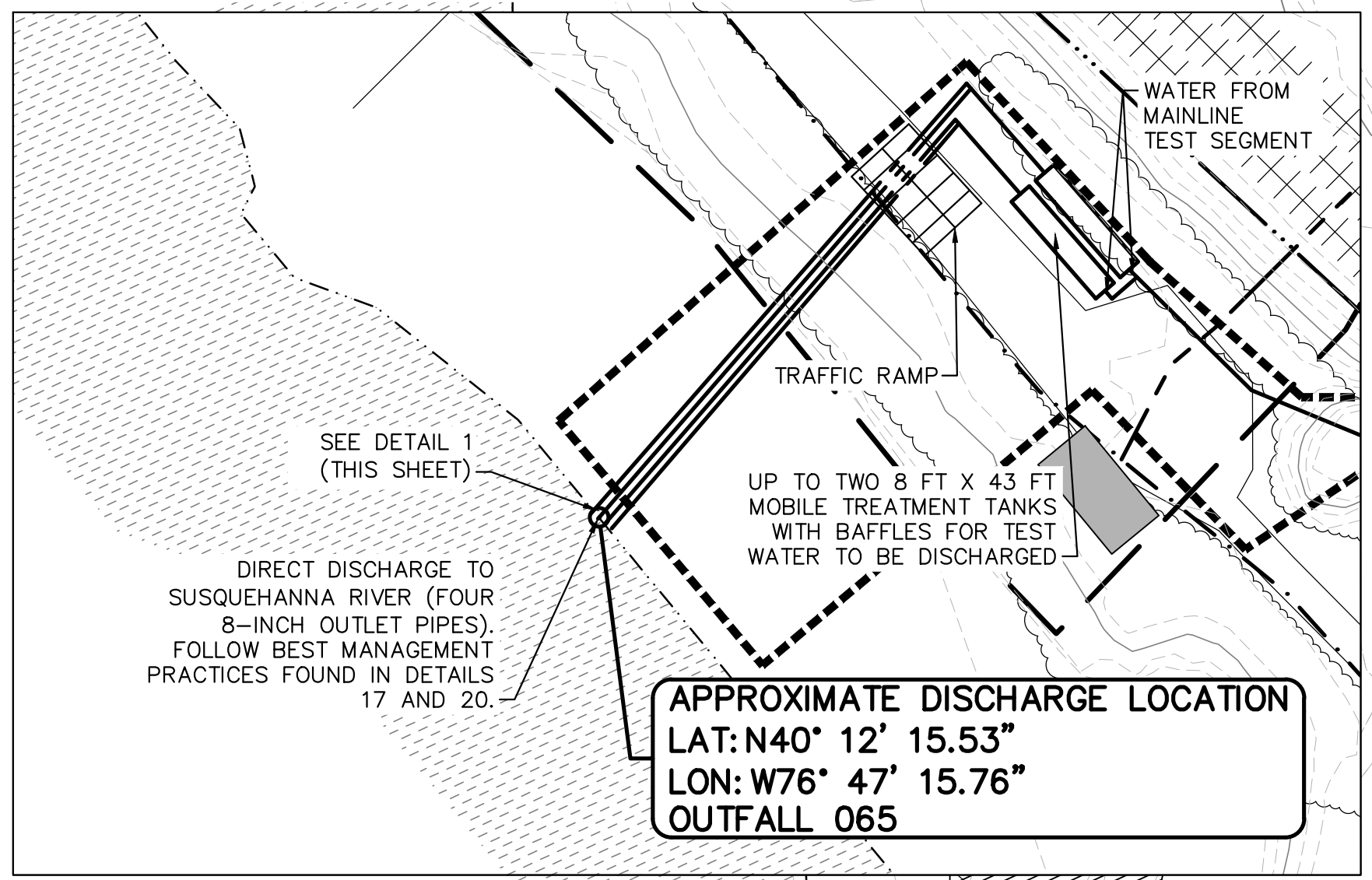
100-YEAR FLOODWAY (TYP.)

INSET A: WATER WITHDRAWAL EQUIPMENT DETAIL



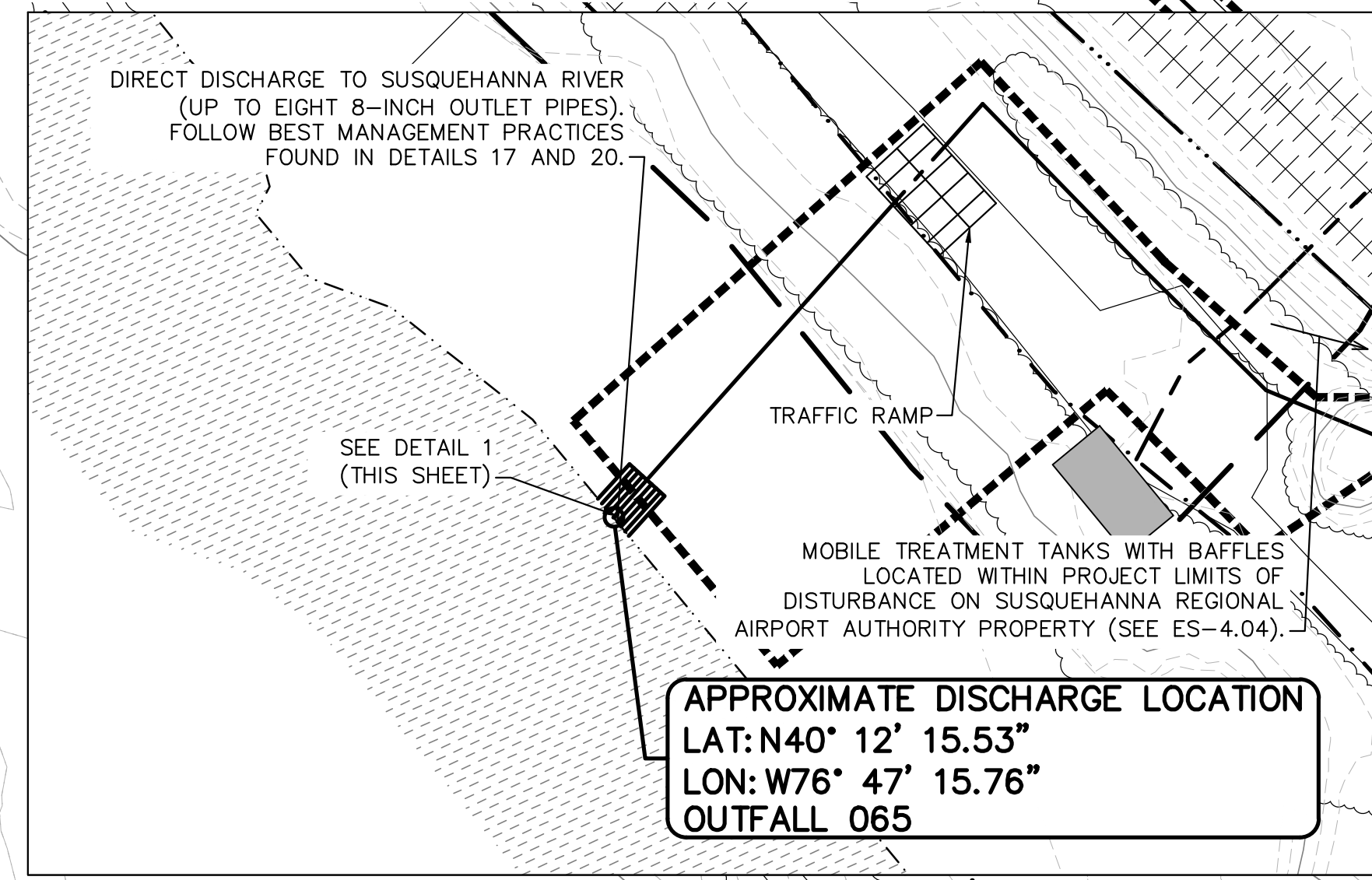
APPROXIMATE WITHDRAWAL LOCATION
LAT: N40° 12' 15.33"
LON: W76° 47' 16.27"

INSET B: WATER DISCHARGE EQUIPMENT DETAIL (TANKS ON HIGHSPIRE BOATING ASSOCIATION PROPERTY)



APPROXIMATE DISCHARGE LOCATION
LAT: N40° 12' 15.53"
LON: W76° 47' 15.76"
OUTFALL 065

INSET C: WATER DISCHARGE EQUIPMENT DETAIL (TANKS ON SUSQUEHANNA REGIONAL AIRPORT AUTHORITY PROPERTY)



APPROXIMATE DISCHARGE LOCATION
LAT: N40° 12' 15.53"
LON: W76° 47' 15.76"
OUTFALL 065

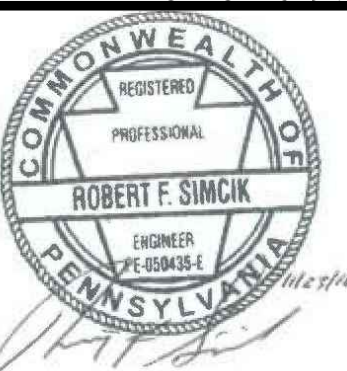
MATCHLINE ES-4.02

11210+00 11212+00 11214+00 11216+00 11218+00 11220+00 11222+00 11224+00



TETRA TECH
www.tetrattech.com
661 ANDERSEN DRIVE - FOSTER PLAZA 7
PITTSBURGH, PA 15220
T: (412) 921-7090 | F: (412) 921-4040

REVISIONS			
NO.	BY	DATE	REMARKS

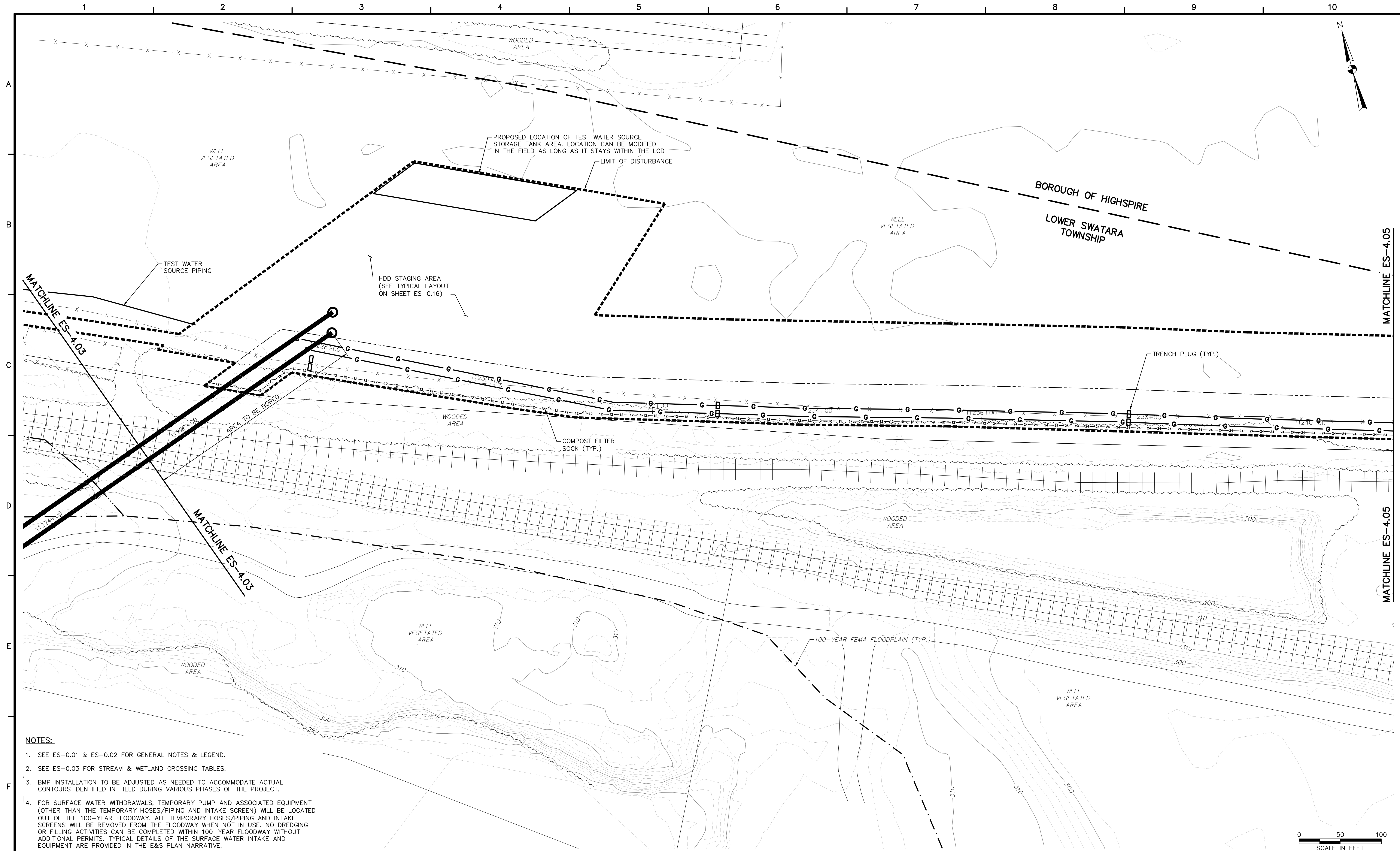


SUNOCO PIPELINE L.P.
SINKING SPRING, PENNSYLVANIA
PENNSYLVANIA PIPELINE PROJECT
CONSTRUCTION SPREAD 4

1-16" & 1-20" PROPOSED WELDED STEEL NATURAL GAS LIQUIDS PIPELINES
DAUPHIN COUNTY CONSERVATION DISTRICT
EROSION & SEDIMENT CONTROL &
SITE RESTORATION PLAN
SHEET 3 OF 39

DATE: NOVEMBER 2016
PROJECT NO.: 112IC05958
DESIGNED BY: JB
DRAWN BY: BH
CHECKED BY: RS
COPYRIGHT TETRA TECH INC.
ES-4.03
SHEET 4.03 OF 63

R:_Marcellus Shale Projects\Sunoco\5958 - Penn Pipeline Project\13 - Dauphin\EA\S\5958ES004.03.dwg PLOT: BEN.HOPPE 2/4/2017 9:35:45 AM

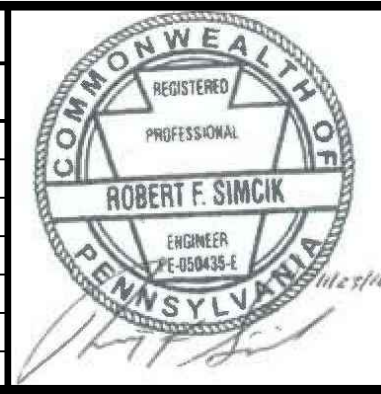


- NOTES:**
- SEE ES-0.01 & ES-0.02 FOR GENERAL NOTES & LEGEND.
 - SEE ES-0.03 FOR STREAM & WETLAND CROSSING TABLES.
 - BMP INSTALLATION TO BE ADJUSTED AS NEEDED TO ACCOMMODATE ACTUAL CONTOURS IDENTIFIED IN FIELD DURING VARIOUS PHASES OF THE PROJECT.
 - FOR SURFACE WATER WITHDRAWALS, TEMPORARY PUMP AND ASSOCIATED EQUIPMENT (OTHER THAN THE TEMPORARY HOSES/PIPING AND INTAKE SCREEN) WILL BE LOCATED OUT OF THE 100-YEAR FLOODWAY. ALL TEMPORARY HOSES/PIPING AND INTAKE SCREENS WILL BE REMOVED FROM THE FLOODWAY WHEN NOT IN USE. NO DREDGING OR FILLING ACTIVITIES CAN BE COMPLETED WITHIN 100-YEAR FLOODWAY WITHOUT ADDITIONAL PERMITS. TYPICAL DETAILS OF THE SURFACE WATER INTAKE AND EQUIPMENT ARE PROVIDED IN THE E&S PLAN NARRATIVE.



TETRA TECH
www.tetrattech.com
661 ANDERSEN DRIVE - FOSTER PLAZA 7
PITTSBURGH, PA 15220
T: (412) 921-7090 | F: (412) 921-4040

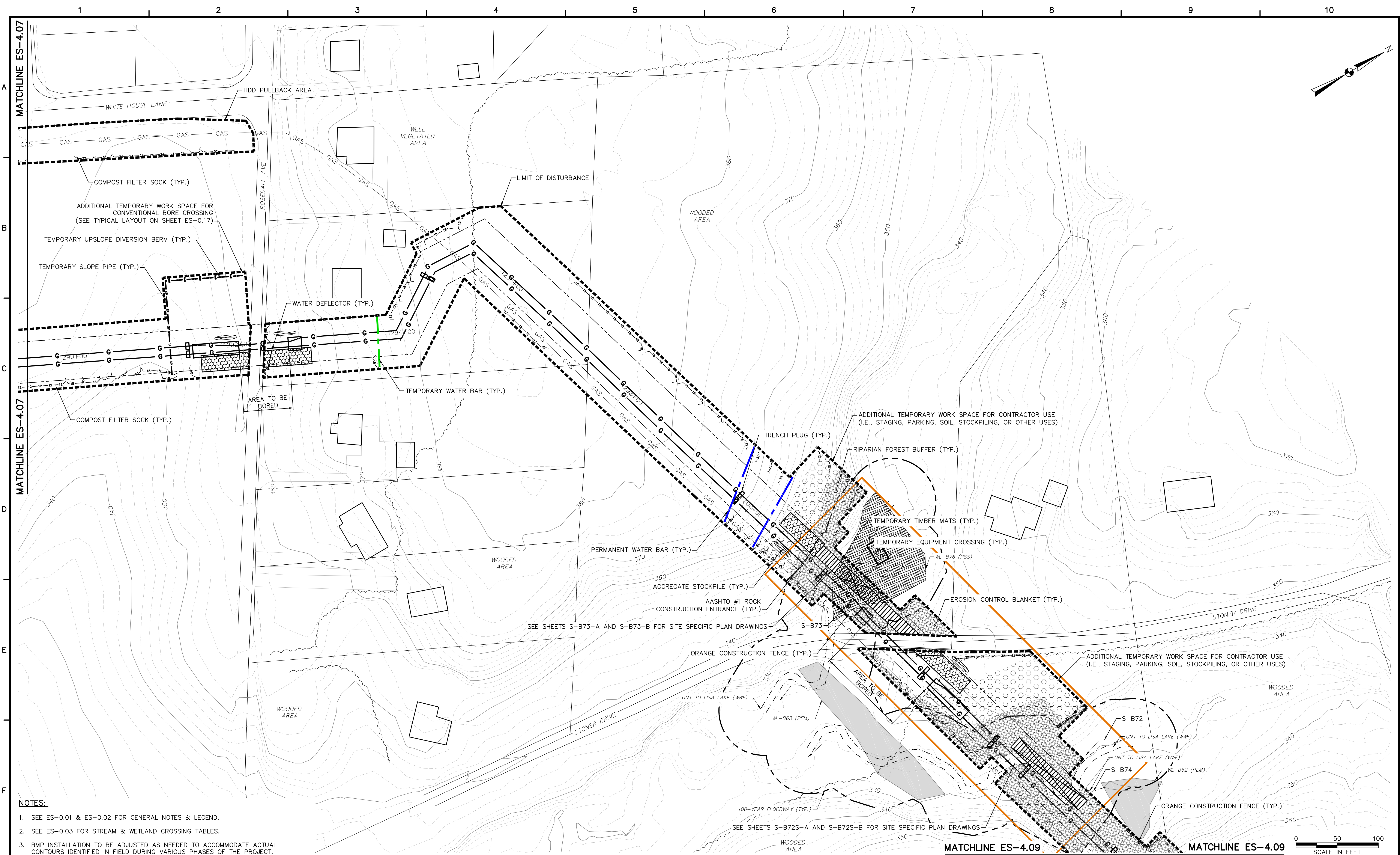
REVISIONS			
NO.	BY	DATE	REMARKS



SUNOCO PIPELINE L.P.
SINKING SPRING, PENNSYLVANIA
PENNSYLVANIA PIPELINE PROJECT
CONSTRUCTION SPREAD 4

1-16" & 1-20" PROPOSED WELDED STEEL NATURAL GAS LIQUIDS PIPELINES
DAUPHIN COUNTY CONSERVATION DISTRICT
EROSION & SEDIMENT CONTROL &
SITE RESTORATION PLAN
SHEET 4 OF 39

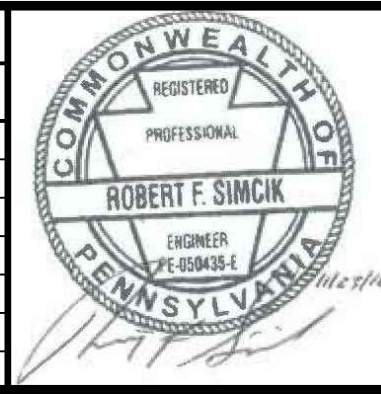
DATE:	NOVEMBER 2016
PROJECT NO.:	1121C05958
DESIGNED BY:	JB
DRAWN BY:	BH
CHECKED BY:	RS
COPYRIGHT TETRA TECH INC.	
ES-4.04	
SHEET 4.04 OF 63	



- NOTES:**
1. SEE ES-0.01 & ES-0.02 FOR GENERAL NOTES & LEGEND.
 2. SEE ES-0.03 FOR STREAM & WETLAND CROSSING TABLES.
 3. BMP INSTALLATION TO BE ADJUSTED AS NEEDED TO ACCOMMODATE ACTUAL CONTOURS IDENTIFIED IN FIELD DURING VARIOUS PHASES OF THE PROJECT.

TETRA TECH
www.tetrattech.com
661 ANDERSEN DRIVE - FOSTER PLAZA 7
PITTSBURGH, PA 15220
T: (412) 921-7090 | F: (412) 921-4040

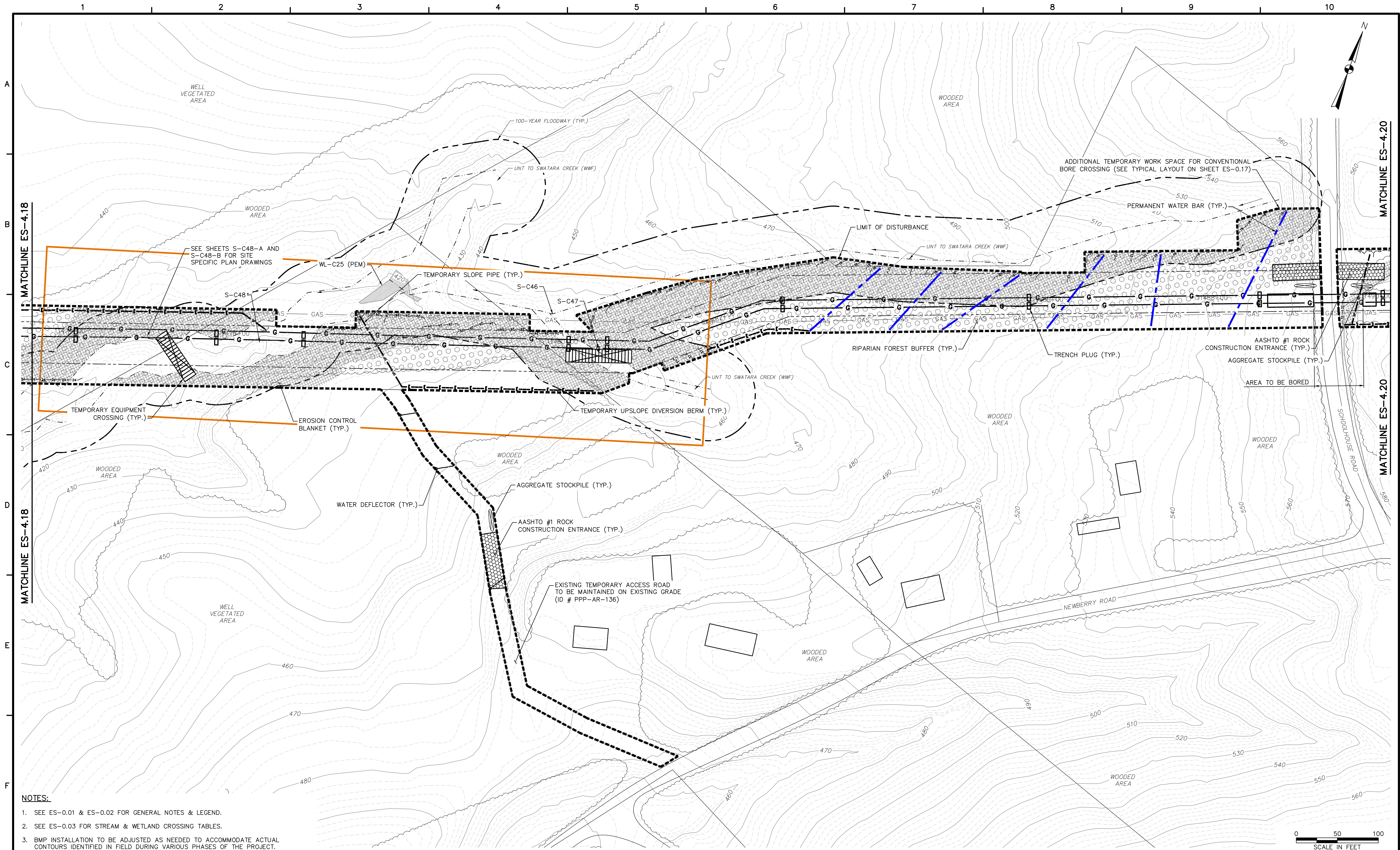
REVISIONS			
NO.	BY	DATE	REMARKS



**SUNOCO PIPELINE L.P.
SINKING SPRING, PENNSYLVANIA
PENNSYLVANIA PIPELINE PROJECT
CONSTRUCTION SPREAD 4**

1-16" & 1-20" PROPOSED WELDED STEEL NATURAL GAS LIQUIDS PIPELINES
**DAUPHIN COUNTY CONSERVATION DISTRICT
EROSION & SEDIMENT CONTROL &
SITE RESTORATION PLAN
SHEET 8 OF 39**

DATE:	NOVEMBER 2016
PROJECT NO.:	1121C05958
DESIGNED BY:	JB
DRAWN BY:	BH
CHECKED BY:	RS
COPYRIGHT TETRA TECH INC.	
ES-4.08	
SHEET 4.08 OF 63	

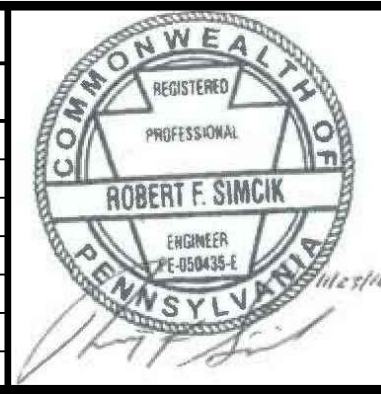


- NOTES:**
1. SEE ES-0.01 & ES-0.02 FOR GENERAL NOTES & LEGEND.
 2. SEE ES-0.03 FOR STREAM & WETLAND CROSSING TABLES.
 3. BMP INSTALLATION TO BE ADJUSTED AS NEEDED TO ACCOMMODATE ACTUAL CONTOURS IDENTIFIED IN FIELD DURING VARIOUS PHASES OF THE PROJECT.



TETRA TECH
www.tetrattech.com
661 ANDERSON DRIVE - FOSTER PLAZA 7
PITTSBURGH, PA 15220
T: (412) 921-7090 | F: (412) 921-4040

REVISIONS			
NO.	BY	DATE	REMARKS



SUNOCO PIPELINE L.P.
SINKING SPRING, PENNSYLVANIA
PENNSYLVANIA PIPELINE PROJECT
CONSTRUCTION SPREAD 4

1-16" & 1-20" PROPOSED WELDED STEEL NATURAL GAS LIQUIDS PIPELINES
DAUPHIN COUNTY CONSERVATION DISTRICT
EROSION & SEDIMENT CONTROL &
SITE RESTORATION PLAN
SHEET 19 OF 39

DATE: NOVEMBER 2016
PROJECT NO.: 112IC05958
DESIGNED BY: JB
DRAWN BY: BH
CHECKED BY: RS
COPYRIGHT TETRA TECH INC.
ES-4.19
SHEET 4.19 OF 63