

- NOTES:**
- SEE ES-0.01 & ES-0.02 FOR GENERAL NOTES & LEGEND.
  - SEE ES-0.03 FOR STREAM & WETLAND CROSSING TABLES.
  - BMP INSTALLATION TO BE ADJUSTED AS NEEDED TO ACCOMMODATE ACTUAL CONTOURS IDENTIFIED IN FIELD DURING VARIOUS PHASES OF THE PROJECT.



www.tetrattech.com  
 661 ANDERSEN DRIVE - FOSTER PLAZA 7  
 PITTSBURGH, PA 15220  
 T: (412) 921-7090 | F: (412) 921-4040

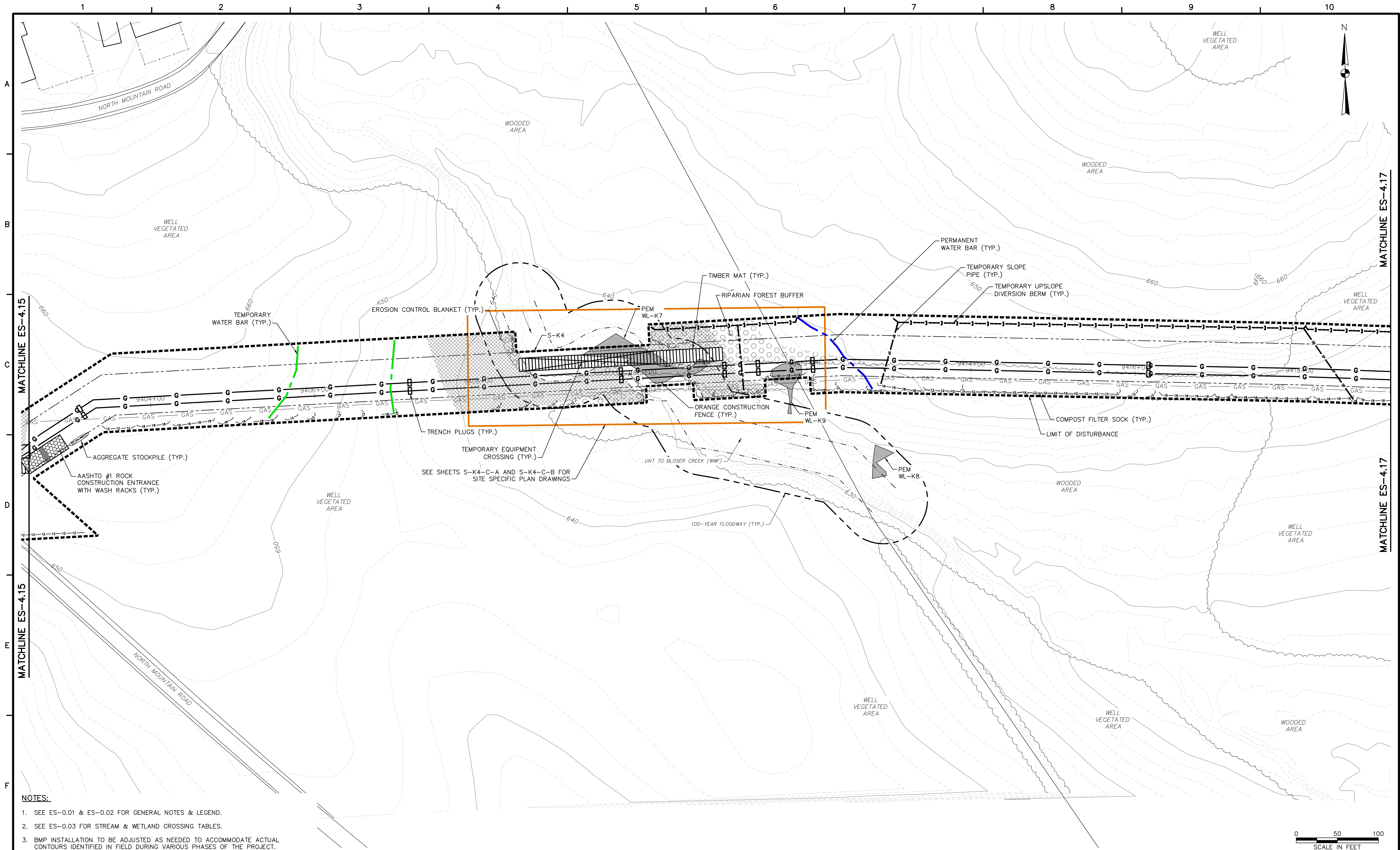
| REVISIONS |    |      |         |
|-----------|----|------|---------|
| NO.       | BY | DATE | REMARKS |
|           |    |      |         |
|           |    |      |         |
|           |    |      |         |



SUNOCO PIPELINE L.P.  
 SINKING SPRING, PENNSYLVANIA  
**PENNSYLVANIA PIPELINE PROJECT  
 CONSTRUCTION SPREAD 4**

1-20" & 1-16" PROPOSED WELDED STEEL NATURAL GAS LIQUIDS PIPELINES  
 CUMBERLAND COUNTY CONSERVATION DISTRICT  
**EROSION & SEDIMENT CONTROL &  
 SITE RESTORATION PLAN**  
 SHEET 15 OF 101

|                |                 |
|----------------|-----------------|
| DATE:          | NOVEMBER 2016   |
| PROJECT NO.:   | 1121C05958      |
| DESIGNED BY:   | JB              |
| DRAWN BY:      | BH              |
| CHECKED BY:    | RS              |
| COPYRIGHT      | TETRA TECH INC. |
| <b>ES-4.15</b> |                 |
| SHEET 4.15 OF  | 127             |

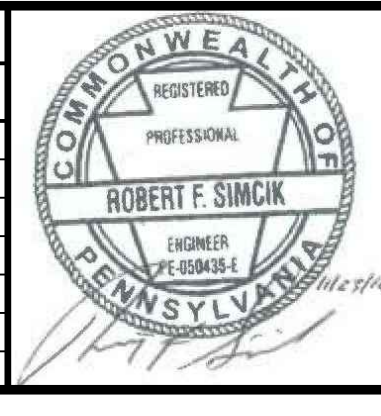


- NOTES:**
- SEE ES-0.01 & ES-0.02 FOR GENERAL NOTES & LEGEND.
  - SEE ES-0.03 FOR STREAM & WETLAND CROSSING TABLES.
  - BMP INSTALLATION TO BE ADJUSTED AS NEEDED TO ACCOMMODATE ACTUAL CONTOURS IDENTIFIED IN FIELD DURING VARIOUS PHASES OF THE PROJECT.



**TETRA TECH**  
www.tetrattech.com  
661 ANDERSEN DRIVE - FOSTER PLAZA 7  
PITTSBURGH, PA 15220  
T: (412) 921-7090 | F: (412) 921-4040

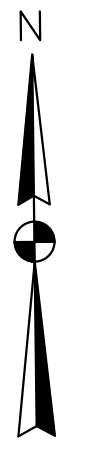
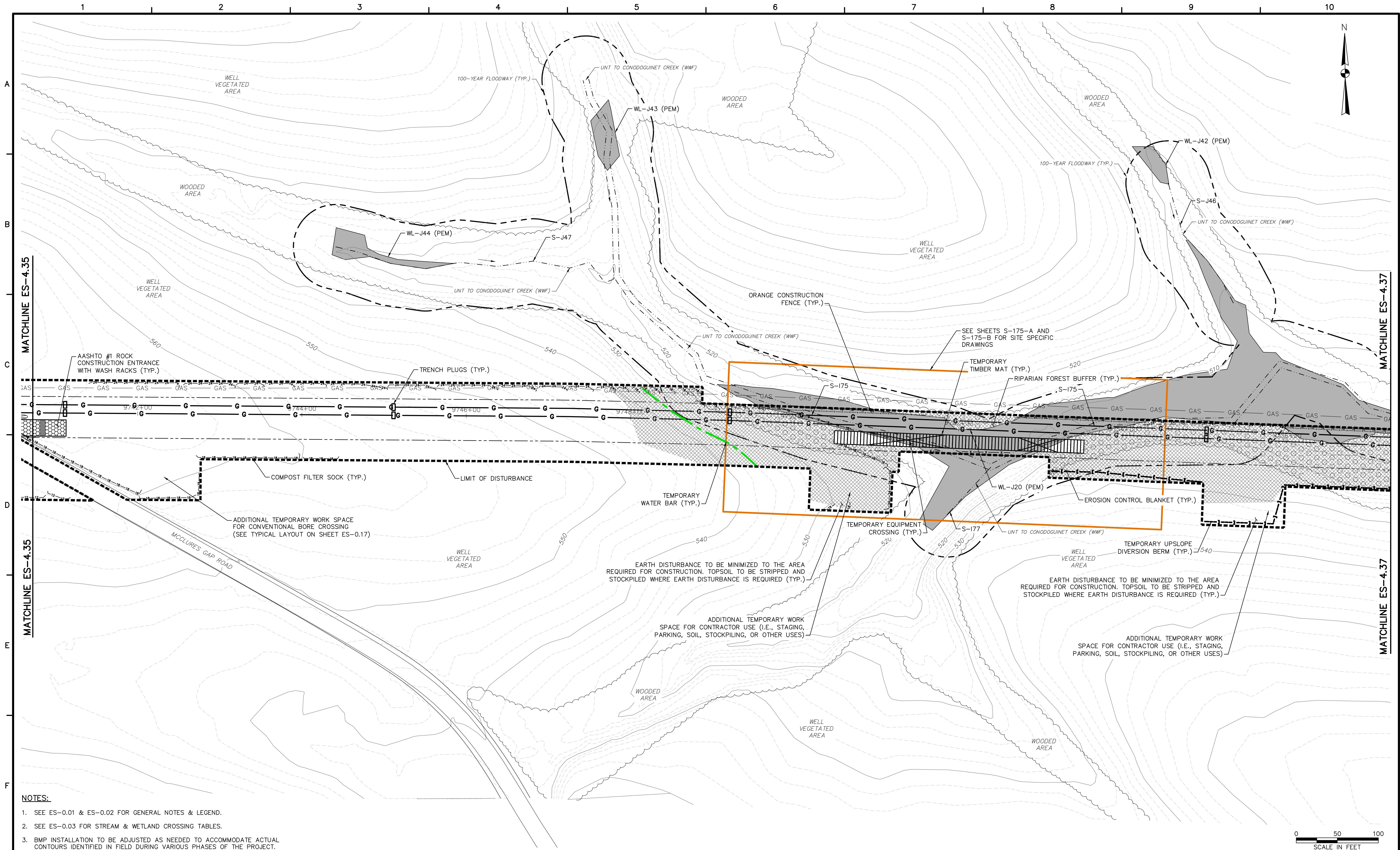
| REVISIONS |    |      |         |
|-----------|----|------|---------|
| NO.       | BY | DATE | REMARKS |
|           |    |      |         |
|           |    |      |         |
|           |    |      |         |
|           |    |      |         |



SUNOCO PIPELINE L.P.  
SINKING SPRING, PENNSYLVANIA  
PENNSYLVANIA PIPELINE PROJECT  
CONSTRUCTION SPREAD 4

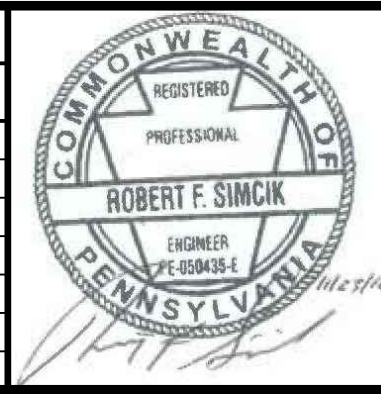
1-20" & 1-16" PROPOSED WELDED STEEL NATURAL GAS LIQUIDS PIPELINES  
CUMBERLAND COUNTY CONSERVATION DISTRICT  
EROSION & SEDIMENT CONTROL &  
SITE RESTORATION PLAN  
SHEET 16 OF 101

DATE: NOVEMBER 2016  
PROJECT NO.: 112IC05958  
DESIGNED BY: JB  
DRAWN BY: BH  
CHECKED BY: RS  
COPYRIGHT TETRA TECH INC.  
**ES-4.16**  
SHEET 4.16 OF 127



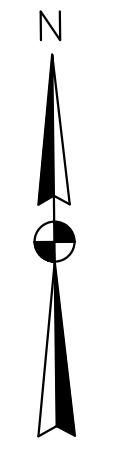
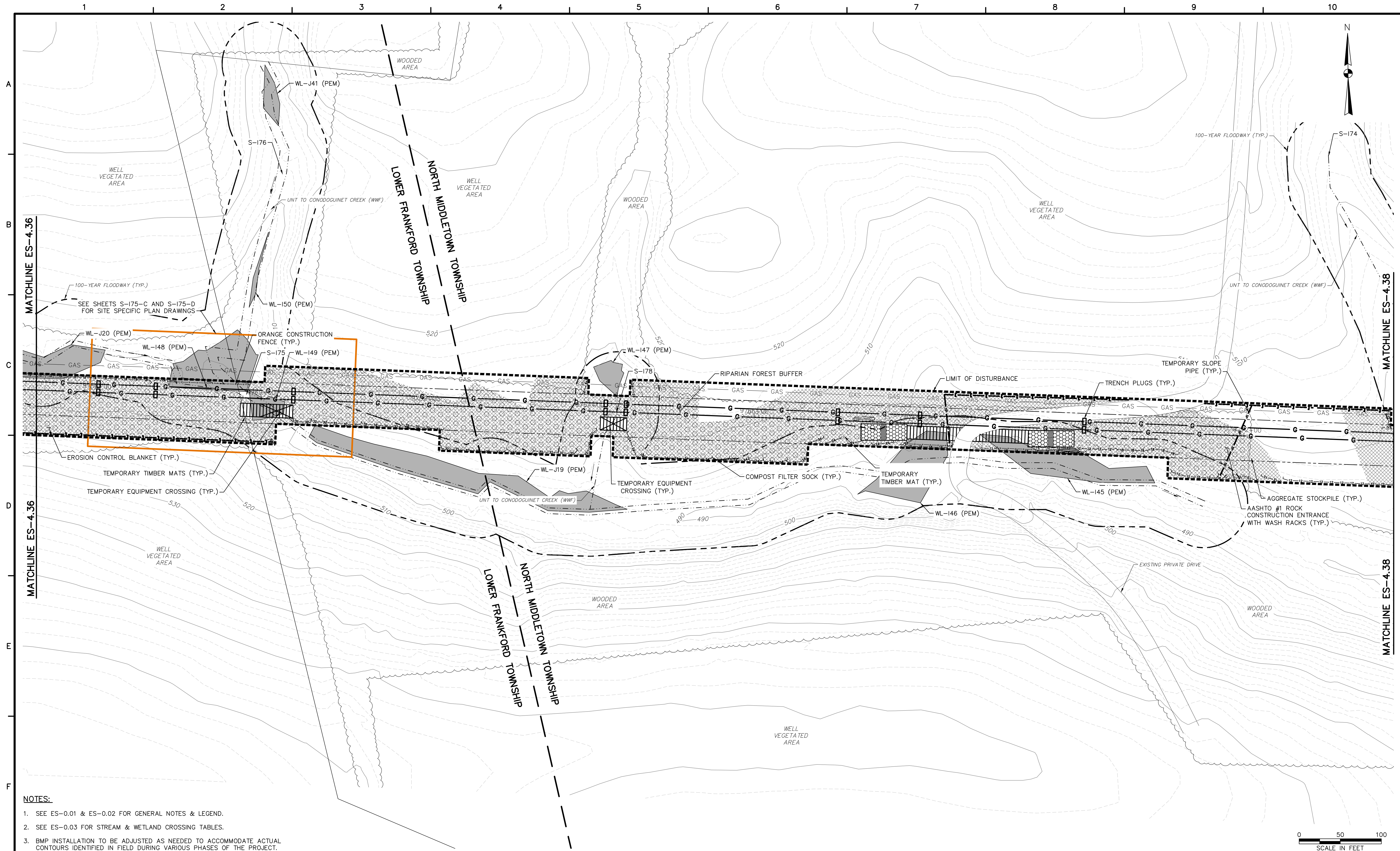
- NOTES:**
1. SEE ES-0.01 & ES-0.02 FOR GENERAL NOTES & LEGEND.
  2. SEE ES-0.03 FOR STREAM & WETLAND CROSSING TABLES.
  3. BMP INSTALLATION TO BE ADJUSTED AS NEEDED TO ACCOMMODATE ACTUAL CONTOURS IDENTIFIED IN FIELD DURING VARIOUS PHASES OF THE PROJECT.

| REVISIONS |    |      |         |
|-----------|----|------|---------|
| NO.       | BY | DATE | REMARKS |
|           |    |      |         |
|           |    |      |         |
|           |    |      |         |



**SUNOCO PIPELINE L.P.**  
**SINKING SPRING, PENNSYLVANIA**  
**PENNSYLVANIA PIPELINE PROJECT**  
**CONSTRUCTION SPREAD 4**

|   |  |       |               |              |            |              |    |           |    |             |    |                           |  |                |  |                   |  |
|---|--|-------|---------------|--------------|------------|--------------|----|-----------|----|-------------|----|---------------------------|--|----------------|--|-------------------|--|
| <p>1-20" &amp; 1-16" PROPOSED WELDED STEEL NATURAL GAS LIQUIDS PIPELINES</p> <p style="text-align: center;"><b>CUMBERLAND COUNTY CONSERVATION DISTRICT</b><br/> <b>EROSION &amp; SEDIMENT CONTROL &amp;</b><br/> <b>SITE RESTORATION PLAN</b><br/> <b>SHEET 36 OF 101</b></p> | <table border="0"> <tr><td>DATE:</td><td>NOVEMBER 2016</td></tr> <tr><td>PROJECT NO.:</td><td>112IC05958</td></tr> <tr><td>DESIGNED BY:</td><td>JB</td></tr> <tr><td>DRAWN BY:</td><td>BH</td></tr> <tr><td>CHECKED BY:</td><td>RS</td></tr> <tr><td colspan="2" style="text-align: center;">COPYRIGHT TETRA TECH INC.</td></tr> <tr><td colspan="2" style="text-align: center;"><b>ES-4.36</b></td></tr> <tr><td colspan="2" style="text-align: center;">SHEET 4.36 OF 127</td></tr> </table> | DATE: | NOVEMBER 2016 | PROJECT NO.: | 112IC05958 | DESIGNED BY: | JB | DRAWN BY: | BH | CHECKED BY: | RS | COPYRIGHT TETRA TECH INC. |  | <b>ES-4.36</b> |  | SHEET 4.36 OF 127 |  |
| DATE:   | NOVEMBER 2016  |       |               |              |            |              |    |           |    |             |    |                           |  |                |  |                   |  |
| PROJECT NO.:  | 112IC05958   |       |               |              |            |              |    |           |    |             |    |                           |  |                |  |                   |  |
| DESIGNED BY:  | JB   |       |               |              |            |              |    |           |    |             |    |                           |  |                |  |                   |  |
| DRAWN BY:   | BH   |       |               |              |            |              |    |           |    |             |    |                           |  |                |  |                   |  |
| CHECKED BY:   | RS   |       |               |              |            |              |    |           |    |             |    |                           |  |                |  |                   |  |
| COPYRIGHT TETRA TECH INC.   |  |       |               |              |            |              |    |           |    |             |    |                           |  |                |  |                   |  |
| <b>ES-4.36</b>  |  |       |               |              |            |              |    |           |    |             |    |                           |  |                |  |                   |  |
| SHEET 4.36 OF 127   |  |       |               |              |            |              |    |           |    |             |    |                           |  |                |  |                   |  |

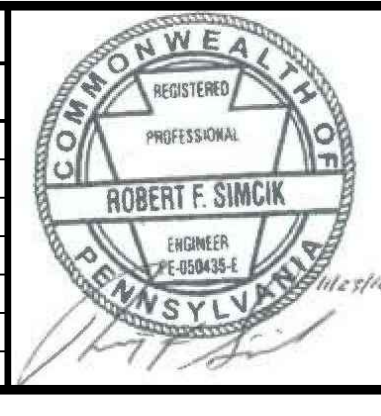


- NOTES:**
1. SEE ES-0.01 & ES-0.02 FOR GENERAL NOTES & LEGEND.
  2. SEE ES-0.03 FOR STREAM & WETLAND CROSSING TABLES.
  3. BMP INSTALLATION TO BE ADJUSTED AS NEEDED TO ACCOMMODATE ACTUAL CONTOURS IDENTIFIED IN FIELD DURING VARIOUS PHASES OF THE PROJECT.



**TETRA TECH**  
www.tetrattech.com  
661 ANDERSEN DRIVE - FOSTER PLAZA 7  
PITTSBURGH, PA 15220  
T: (412) 921-7090 | F: (412) 921-4040

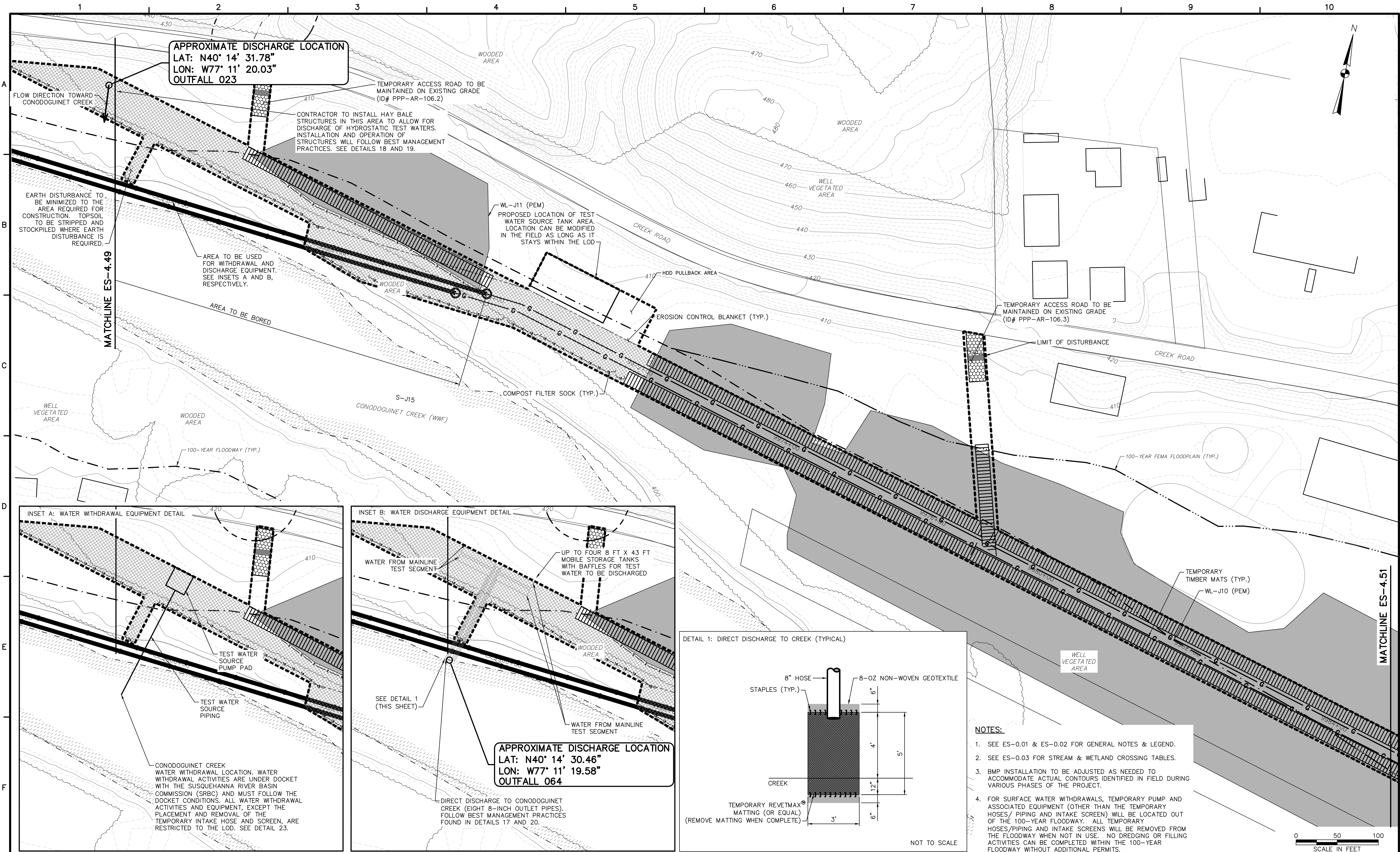
| REVISIONS |    |      |         |
|-----------|----|------|---------|
| NO.       | BY | DATE | REMARKS |
|           |    |      |         |
|           |    |      |         |
|           |    |      |         |



SUNOCO PIPELINE L.P.  
SINKING SPRING, PENNSYLVANIA  
**PENNSYLVANIA PIPELINE PROJECT  
CONSTRUCTION SPREAD 4**

1-20" & 1-16" PROPOSED WELDED STEEL NATURAL GAS LIQUIDS PIPELINES  
CUMBERLAND COUNTY CONSERVATION DISTRICT  
**EROSION & SEDIMENT CONTROL &  
SITE RESTORATION PLAN  
SHEET 37 OF 101**

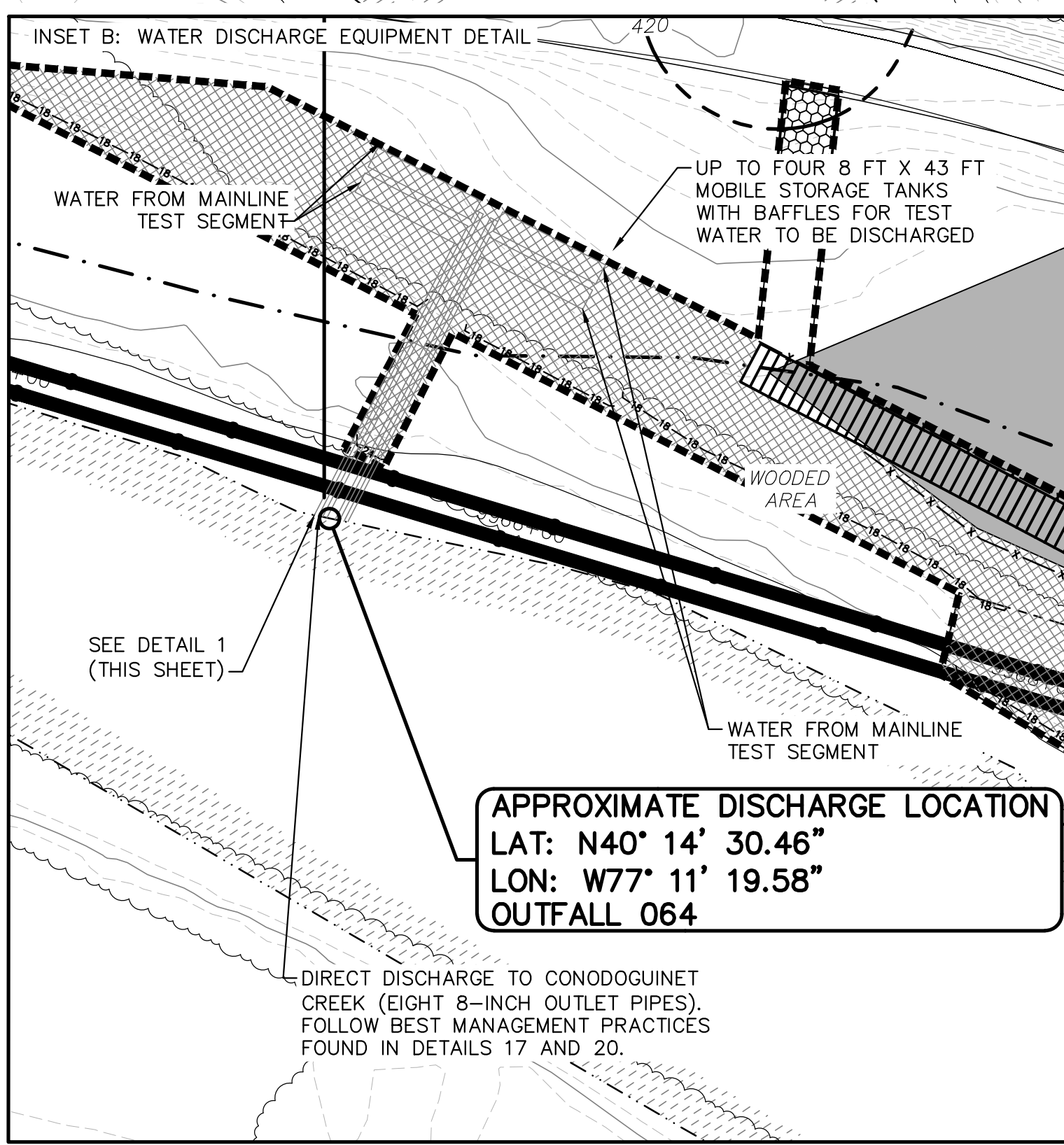
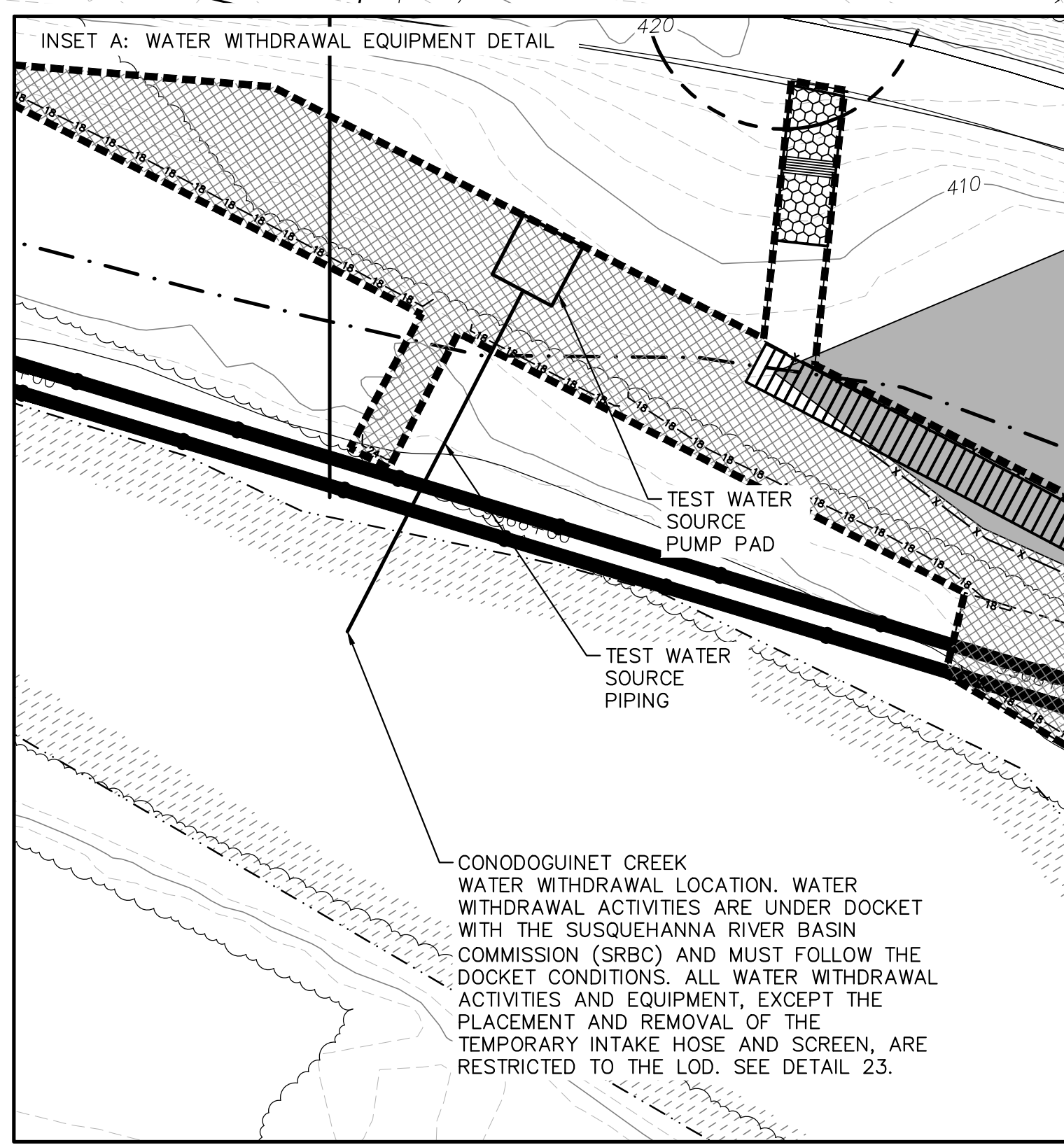
|                           |               |
|---------------------------|---------------|
| DATE:                     | NOVEMBER 2016 |
| PROJECT NO.:              | 1121C05958    |
| DESIGNED BY:              | JB            |
| DRAWN BY:                 | BH            |
| CHECKED BY:               | RS            |
| COPYRIGHT TETRA TECH INC. |               |
| <b>ES-4.37</b>            |               |
| SHEET 4.37 OF 127         |               |



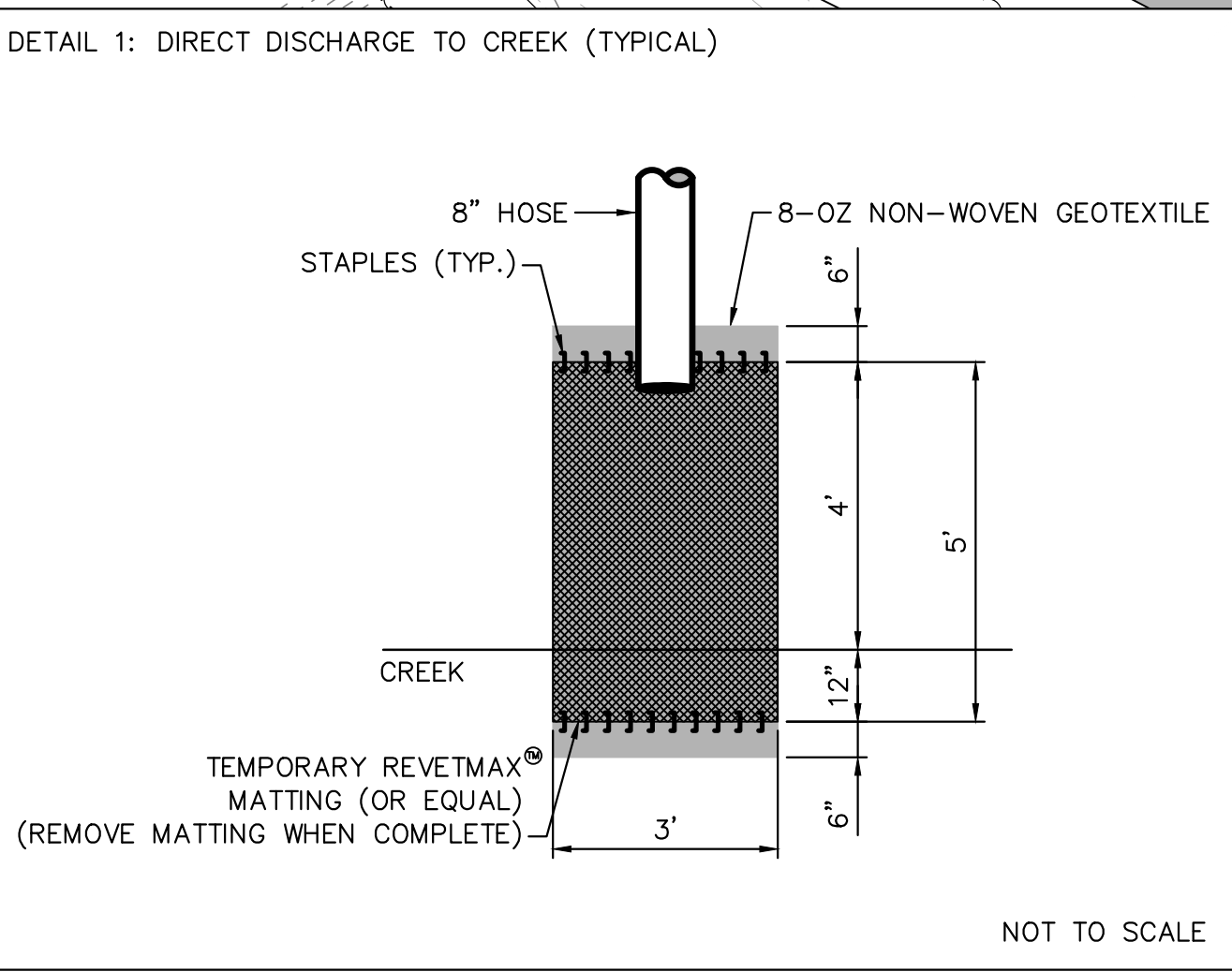
APPROXIMATE DISCHARGE LOCATION  
 LAT: N40° 14' 31.78"  
 LON: W77° 11' 20.03"  
 OUTFALL 023

MATCHLINE ES-4.49

MATCHLINE ES-4.51



APPROXIMATE DISCHARGE LOCATION  
 LAT: N40° 14' 30.46"  
 LON: W77° 11' 19.58"  
 OUTFALL 064

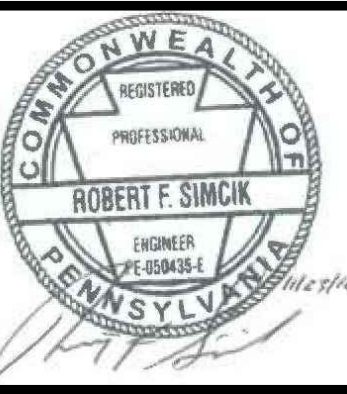


- NOTES:**
- SEE ES-0.01 & ES-0.02 FOR GENERAL NOTES & LEGEND.
  - SEE ES-0.03 FOR STREAM & WETLAND CROSSING TABLES.
  - BMP INSTALLATION TO BE ADJUSTED AS NEEDED TO ACCOMMODATE ACTUAL CONTOURS IDENTIFIED IN FIELD DURING VARIOUS PHASES OF THE PROJECT.
  - FOR SURFACE WATER WITHDRAWALS, TEMPORARY PUMP AND ASSOCIATED EQUIPMENT (OTHER THAN THE TEMPORARY HOSES/ PIPING AND INTAKE SCREEN) WILL BE LOCATED OUT OF THE 100-YEAR FLOODWAY. ALL TEMPORARY HOSES/PIPING AND INTAKE SCREENS WILL BE REMOVED FROM THE FLOODWAY WHEN NOT IN USE. NO DREDGING OR FILLING ACTIVITIES CAN BE COMPLETED WITHIN THE 100-YEAR FLOODWAY WITHOUT ADDITIONAL PERMITS.



**TETRA TECH**  
 www.tetrattech.com  
 661 ANDERSEN DRIVE - FOSTER PLAZA 7  
 PITTSBURGH, PA 15220  
 T: (412) 921-7090 | F: (412) 921-4040

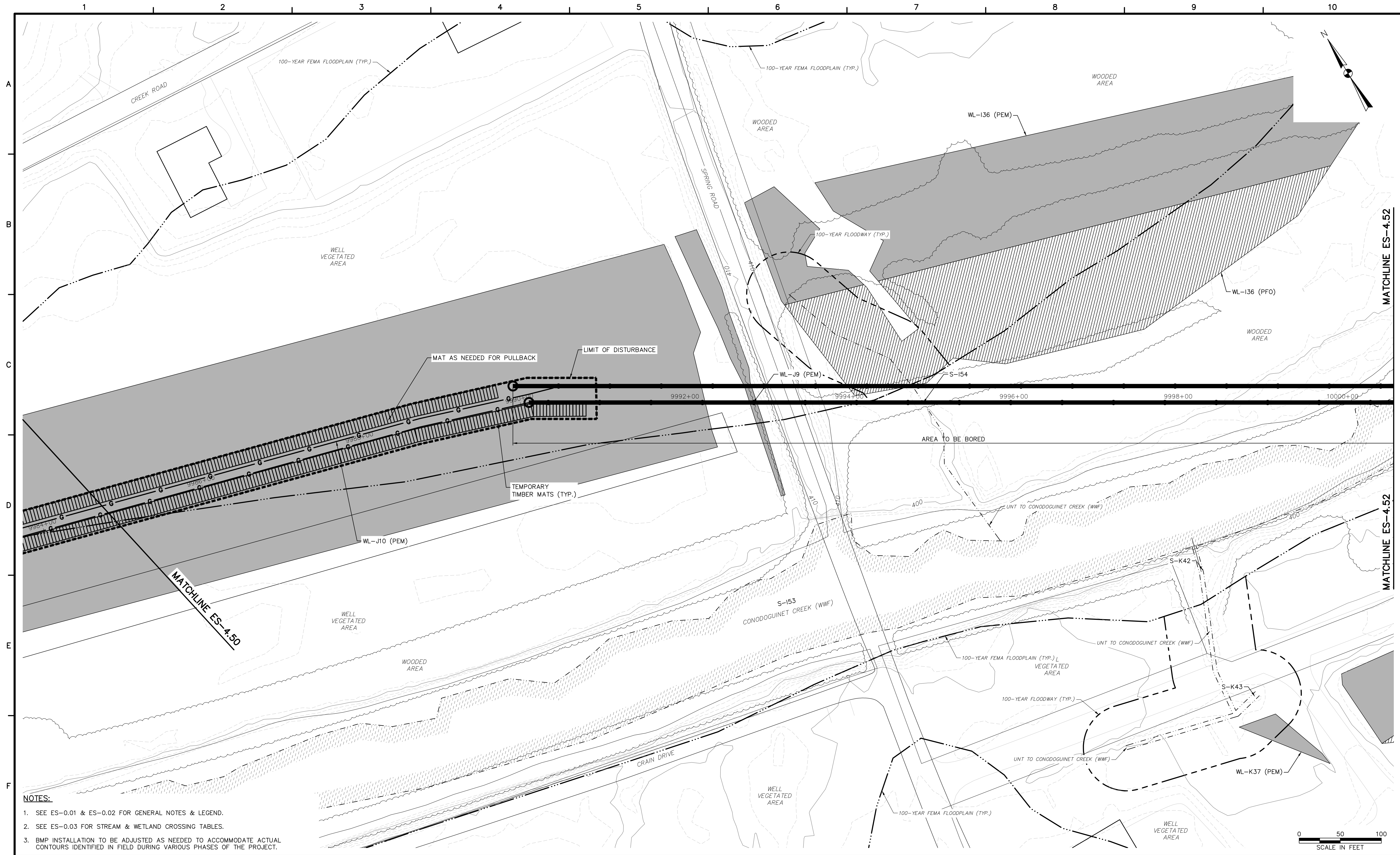
| REVISIONS |    |      |         |
|-----------|----|------|---------|
| NO.       | BY | DATE | REMARKS |
|           |    |      |         |
|           |    |      |         |
|           |    |      |         |



SUNOCO PIPELINE L.P.  
 SINKING SPRING, PENNSYLVANIA  
 PENNSYLVANIA PIPELINE PROJECT  
 CONSTRUCTION SPREAD 4

1-20" & 1-16" PROPOSED WELDED STEEL NATURAL GAS LIQUIDS PIPELINES  
 CUMBERLAND COUNTY CONSERVATION DISTRICT  
 EROSION & SEDIMENT CONTROL &  
 SITE RESTORATION PLAN  
 SHEET 50 OF 101

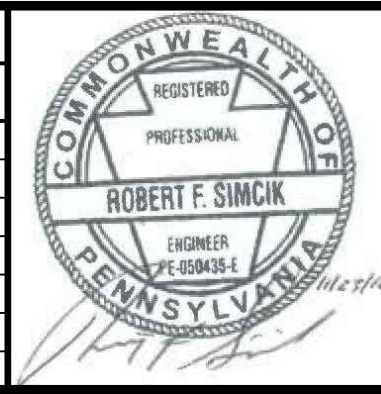
|                   |                 |
|-------------------|-----------------|
| DATE:             | NOVEMBER 2016   |
| PROJECT NO.:      | 112IC05958      |
| DESIGNED BY:      | JB              |
| DRAWN BY:         | BH              |
| CHECKED BY:       | RS              |
| COPYRIGHT:        | TETRA TECH INC. |
| <b>ES-4.50</b>    |                 |
| SHEET 4.50 OF 127 |                 |



- NOTES:**
- SEE ES-0.01 & ES-0.02 FOR GENERAL NOTES & LEGEND.
  - SEE ES-0.03 FOR STREAM & WETLAND CROSSING TABLES.
  - BMP INSTALLATION TO BE ADJUSTED AS NEEDED TO ACCOMMODATE ACTUAL CONTOURS IDENTIFIED IN FIELD DURING VARIOUS PHASES OF THE PROJECT.

**TETRA TECH**  
www.tetrattech.com  
661 ANDERSEN DRIVE - FOSTER PLAZA 7  
PITTSBURGH, PA 15220  
T: (412) 921-7090 | F: (412) 921-4040

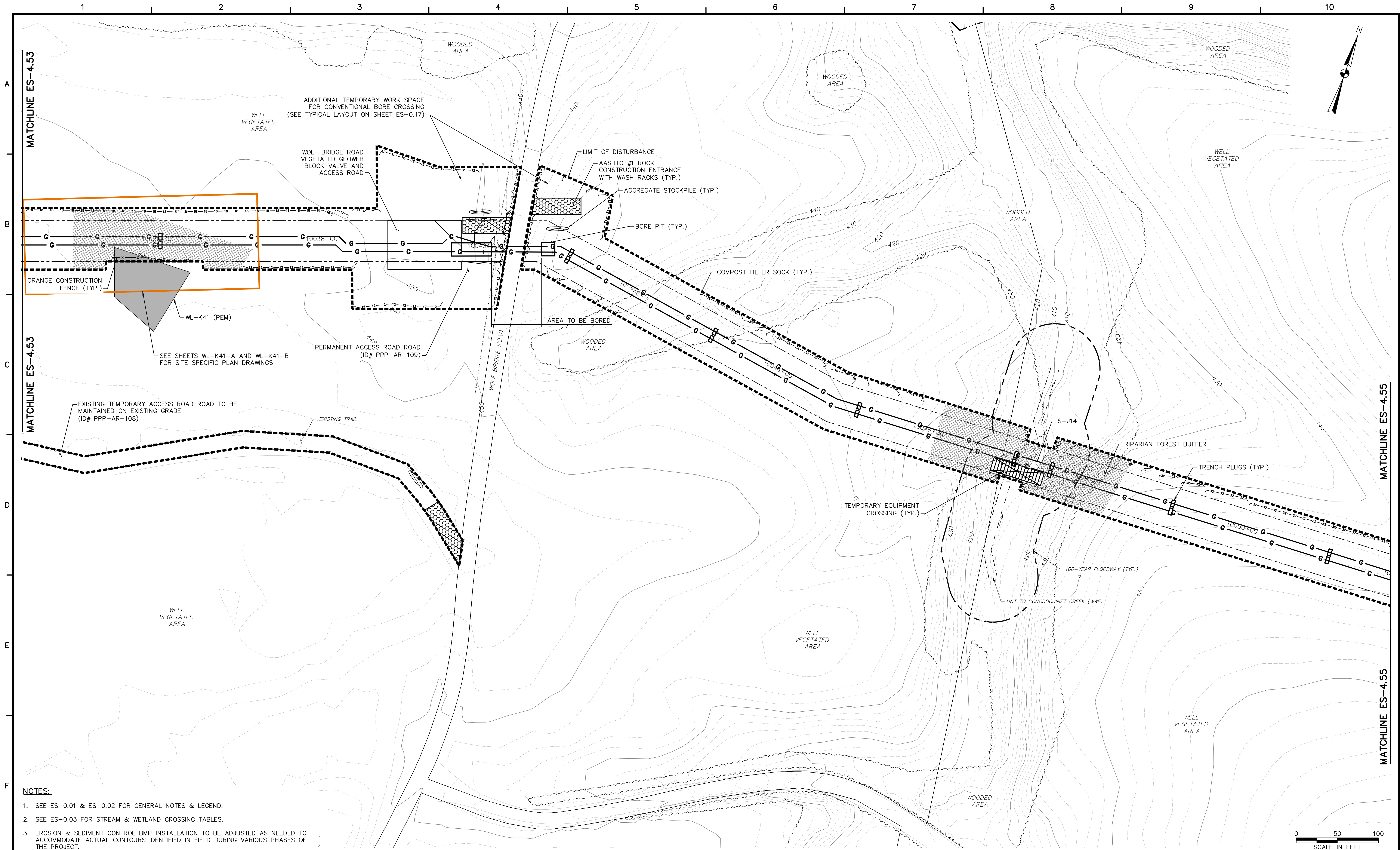
| REVISIONS |    |      |         |
|-----------|----|------|---------|
| NO.       | BY | DATE | REMARKS |
|           |    |      |         |
|           |    |      |         |
|           |    |      |         |



SUNOCO PIPELINE L.P.  
SINKING SPRING, PENNSYLVANIA  
PENNSYLVANIA PIPELINE PROJECT  
CONSTRUCTION SPREAD 4

1-20" & 1-16" PROPOSED WELDED STEEL NATURAL GAS LIQUIDS PIPELINES  
CUMBERLAND COUNTY CONSERVATION DISTRICT  
EROSION & SEDIMENT CONTROL &  
SITE RESTORATION PLAN  
SHEET 51 OF 101

|                           |               |
|---------------------------|---------------|
| DATE:                     | NOVEMBER 2016 |
| PROJECT NO.:              | 1121C05958    |
| DESIGNED BY:              | JB            |
| DRAWN BY:                 | BH            |
| CHECKED BY:               | RS            |
| COPYRIGHT TETRA TECH INC. |               |
| <b>ES-4.51</b>            |               |
| SHEET 4.51 OF 127         |               |



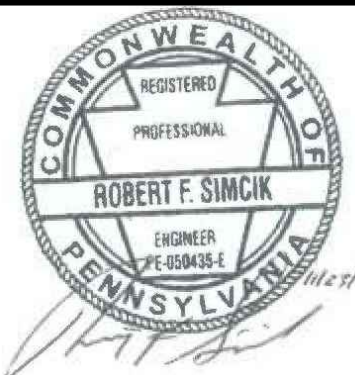
**NOTES:**

- 1. SEE ES-0.01 & ES-0.02 FOR GENERAL NOTES & LEGEND.
- 2. SEE ES-0.03 FOR STREAM & WETLAND CROSSING TABLES.
- 3. EROSION & SEDIMENT CONTROL BMP INSTALLATION TO BE ADJUSTED AS NEEDED TO ACCOMMODATE ACTUAL CONTOURS IDENTIFIED IN FIELD DURING VARIOUS PHASES OF THE PROJECT.



www.tetratotech.com  
 661 ANDERSEN DRIVE - FOSTER PLAZA 7  
 PITTSBURGH, PA 15220  
 T: (412) 921-7090 | F: (412) 921-4040

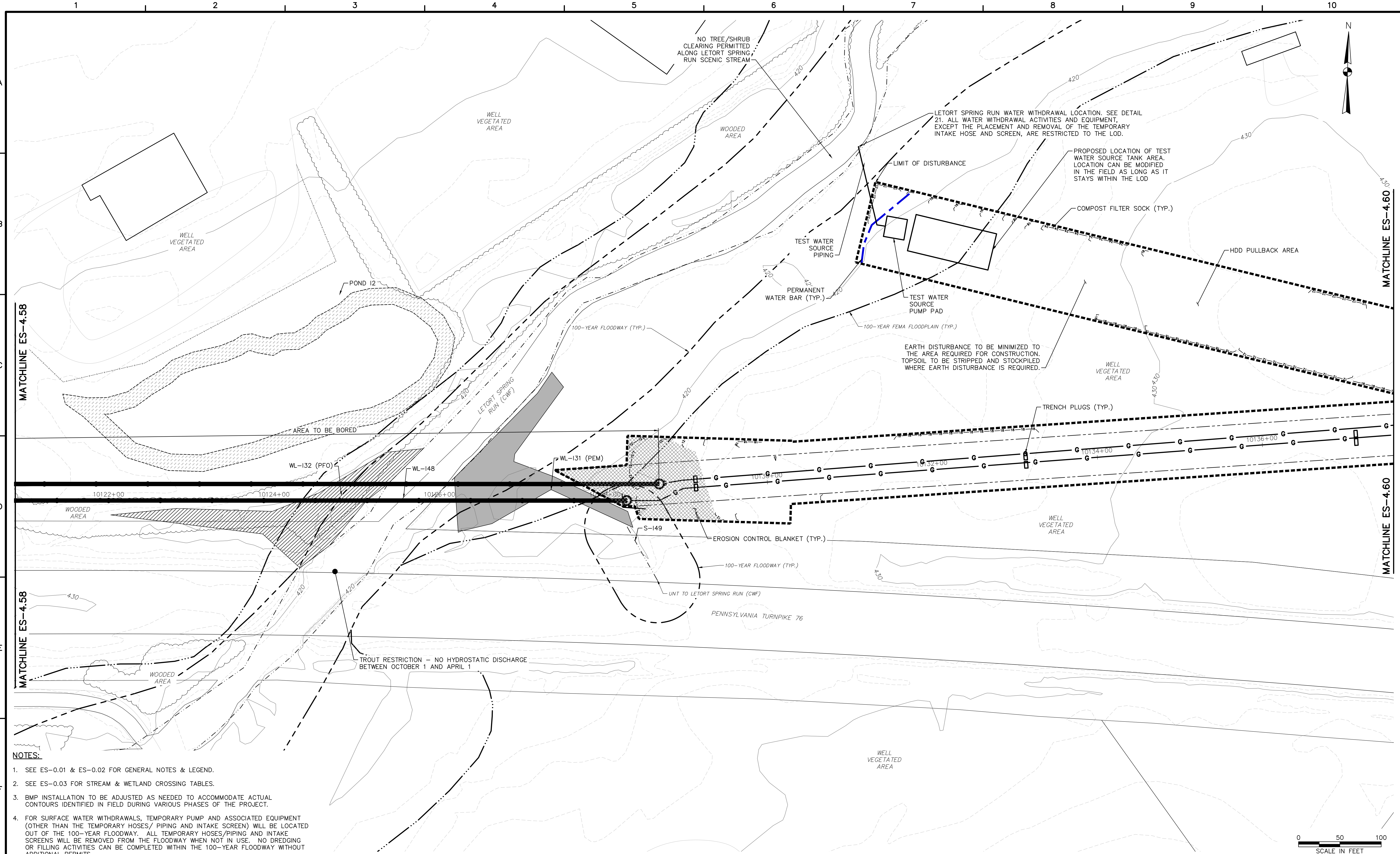
| REVISIONS |    |      | REMARKS |
|-----------|----|------|---------|
| NO.       | BY | DATE |         |
|           |    |      |         |
|           |    |      |         |
|           |    |      |         |



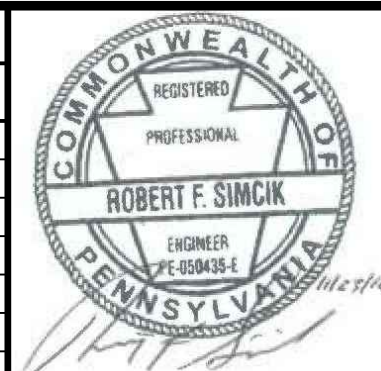
SUNOCO PIPELINE L.P.  
 SINKING SPRING, PENNSYLVANIA  
 PENNSYLVANIA PIPELINE PROJECT  
 CONSTRUCTION SPREAD 4

1-20" & 1-16" PROPOSED WELDED STEEL NATURAL GAS LIQUIDS PIPELINES  
 CUMBERLAND COUNTY CONSERVATION DISTRICT  
 EROSION & SEDIMENT CONTROL &  
 SITE RESTORATION PLAN  
 SHEET 54 OF 101

|                           |               |
|---------------------------|---------------|
| DATE:                     | NOVEMBER 2016 |
| PROJECT NO.:              | 112IC05958    |
| DESIGNED BY:              | JB            |
| DRAWN BY:                 | BH            |
| CHECKED BY:               | RS            |
| COPYRIGHT TETRA TECH INC. |               |
| <b>ES-4.54</b>            |               |
| SHEET 4.54 OF 127         |               |



- NOTES:**
- SEE ES-0.01 & ES-0.02 FOR GENERAL NOTES & LEGEND.
  - SEE ES-0.03 FOR STREAM & WETLAND CROSSING TABLES.
  - BMP INSTALLATION TO BE ADJUSTED AS NEEDED TO ACCOMMODATE ACTUAL CONTOURS IDENTIFIED IN FIELD DURING VARIOUS PHASES OF THE PROJECT.
  - FOR SURFACE WATER WITHDRAWALS, TEMPORARY PUMP AND ASSOCIATED EQUIPMENT (OTHER THAN THE TEMPORARY HOSES/ PIPING AND INTAKE SCREEN) WILL BE LOCATED OUT OF THE 100-YEAR FLOODWAY. ALL TEMPORARY HOSES/PIPING AND INTAKE SCREENS WILL BE REMOVED FROM THE FLOODWAY WHEN NOT IN USE. NO DREDGING OR FILLING ACTIVITIES CAN BE COMPLETED WITHIN THE 100-YEAR FLOODWAY WITHOUT ADDITIONAL PERMITS.



**SUNOCO PIPELINE L.P.  
SINKING SPRING, PENNSYLVANIA  
PENNSYLVANIA PIPELINE PROJECT  
CONSTRUCTION SPREAD 4**

**1-20" & 1-16" PROPOSED WELDED STEEL NATURAL GAS LIQUIDS PIPELINES  
CUMBERLAND COUNTY CONSERVATION DISTRICT  
EROSION & SEDIMENT CONTROL &  
SITE RESTORATION PLAN  
SHEET 59 OF 101**



| REVISIONS |    |      |         |
|-----------|----|------|---------|
| NO.       | BY | DATE | REMARKS |
|           |    |      |         |
|           |    |      |         |
|           |    |      |         |

|                   |                 |
|-------------------|-----------------|
| DATE:             | NOVEMBER 2016   |
| PROJECT NO.:      | 1121C05958      |
| DESIGNED BY:      | JB              |
| DRAWN BY:         | BH              |
| CHECKED BY:       | RS              |
| COPYRIGHT:        | TETRA TECH INC. |
| <b>ES-4.59</b>    |                 |
| SHEET 4.59 OF 127 |                 |