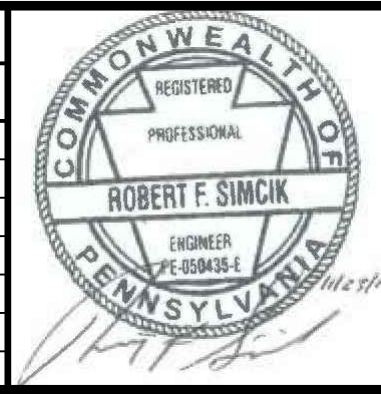


- NOTES:**
- SEE ES-0.01 & ES-0.02 FOR GENERAL NOTES & LEGEND.
 - SEE ES-0.03 FOR STREAM & WETLAND CROSSING TABLES.
 - BMP INSTALLATION TO BE ADJUSTED AS NEEDED TO ACCOMMODATE ACTUAL CONTOURS IDENTIFIED IN FIELD DURING VARIOUS PHASES OF THE PROJECT.
 - FOR SURFACE WATER WITHDRAWALS, TEMPORARY PUMP AND ASSOCIATED EQUIPMENT (OTHER THAN THE TEMPORARY HOSES/ PIPING AND INTAKE SCREEN) WILL BE LOCATED OUT OF THE 100-YEAR FLOODWAY. ALL TEMPORARY HOSES/PIPING AND INTAKE SCREENS WILL BE REMOVED FROM THE FLOODWAY WHEN NOT IN USE. NO DREDGING OR FILLING ACTIVITIES CAN BE COMPLETED WITHIN THE 100-YEAR FLOODWAY WITHOUT ADDITIONAL PERMITS.

TETRA TECH
www.tetrattech.com
661 ANDERSEN DRIVE - FOSTER PLAZA 7
PITTSBURGH, PA 15220
T: (412) 921-7090 | F: (412) 921-4040

REVISIONS			
NO.	BY	DATE	REMARKS

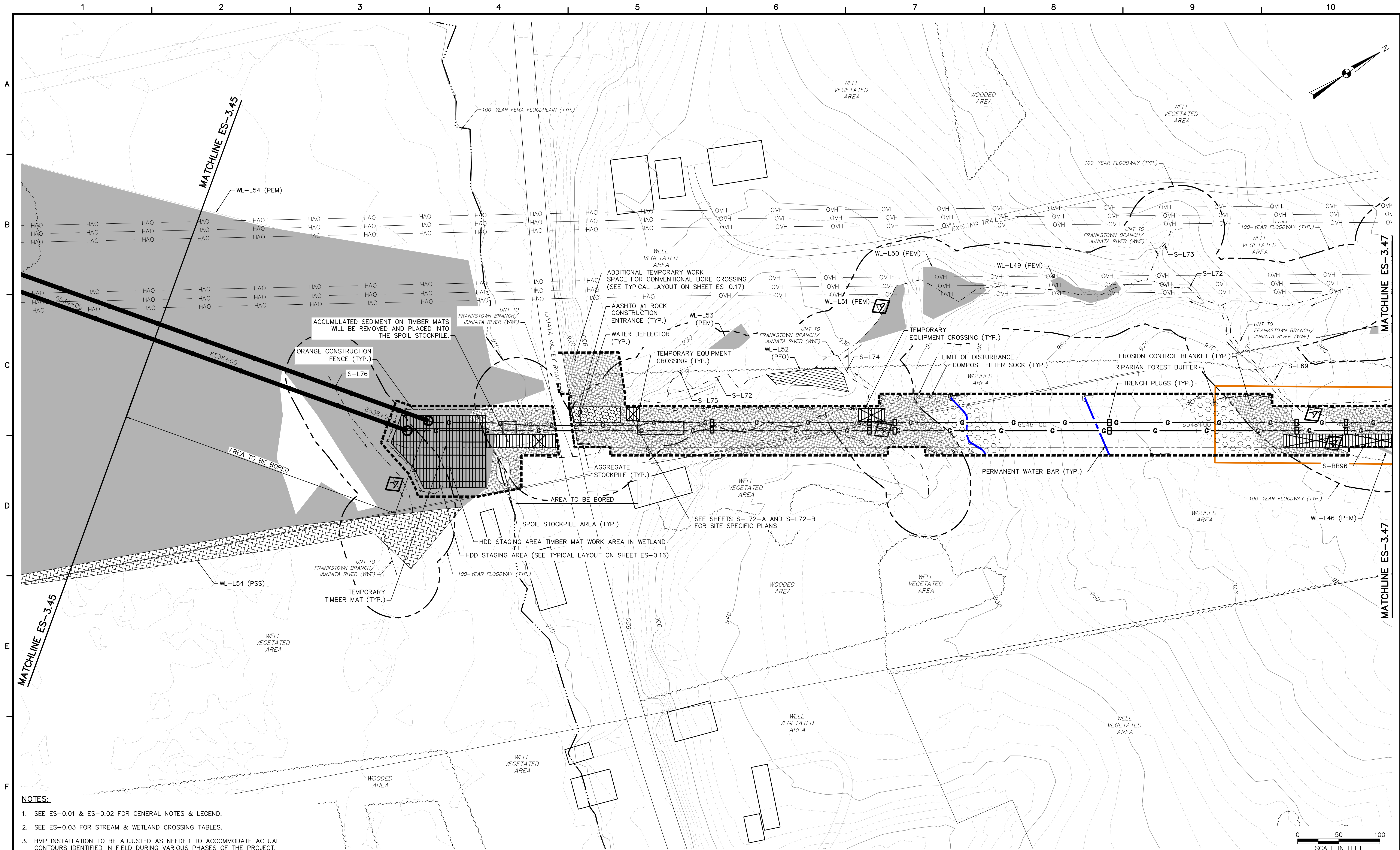


SUNOCO PIPELINE L.P.
SINKING SPRING, PENNSYLVANIA
**PENNSYLVANIA PIPELINE PROJECT
CONSTRUCTION SPREAD 3**

1-20" & 1-16" PROPOSED WELDED STEEL NATURAL GAS LIQUIDS PIPELINES

**BLAIR COUNTY CONSERVATION DISTRICT
EROSION & SEDIMENT CONTROL &
SITE RESTORATION PLAN
SHEET 44 OF 73**

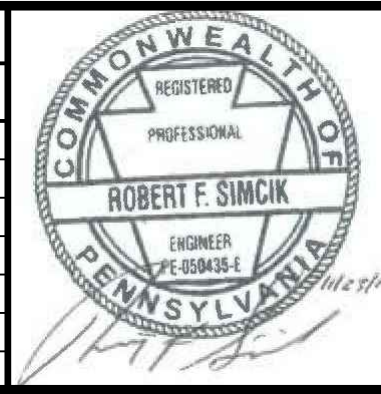
DATE: NOVEMBER 2016
PROJECT NO.: 112IC05958
DESIGNED BY: JB
DRAWN BY: BH
CHECKED BY: RS
COPYRIGHT TETRA TECH INC.
ES-3.44
SHEET 3.44 OF 102



- NOTES:**
- SEE ES-0.01 & ES-0.02 FOR GENERAL NOTES & LEGEND.
 - SEE ES-0.03 FOR STREAM & WETLAND CROSSING TABLES.
 - BMP INSTALLATION TO BE ADJUSTED AS NEEDED TO ACCOMMODATE ACTUAL CONTOURS IDENTIFIED IN FIELD DURING VARIOUS PHASES OF THE PROJECT.

TETRA TECH
www.tetrattech.com
661 ANDERSEN DRIVE - FOSTER PLAZA 7
PITTSBURGH, PA 15220
T: (412) 921-7090 | F: (412) 921-4040

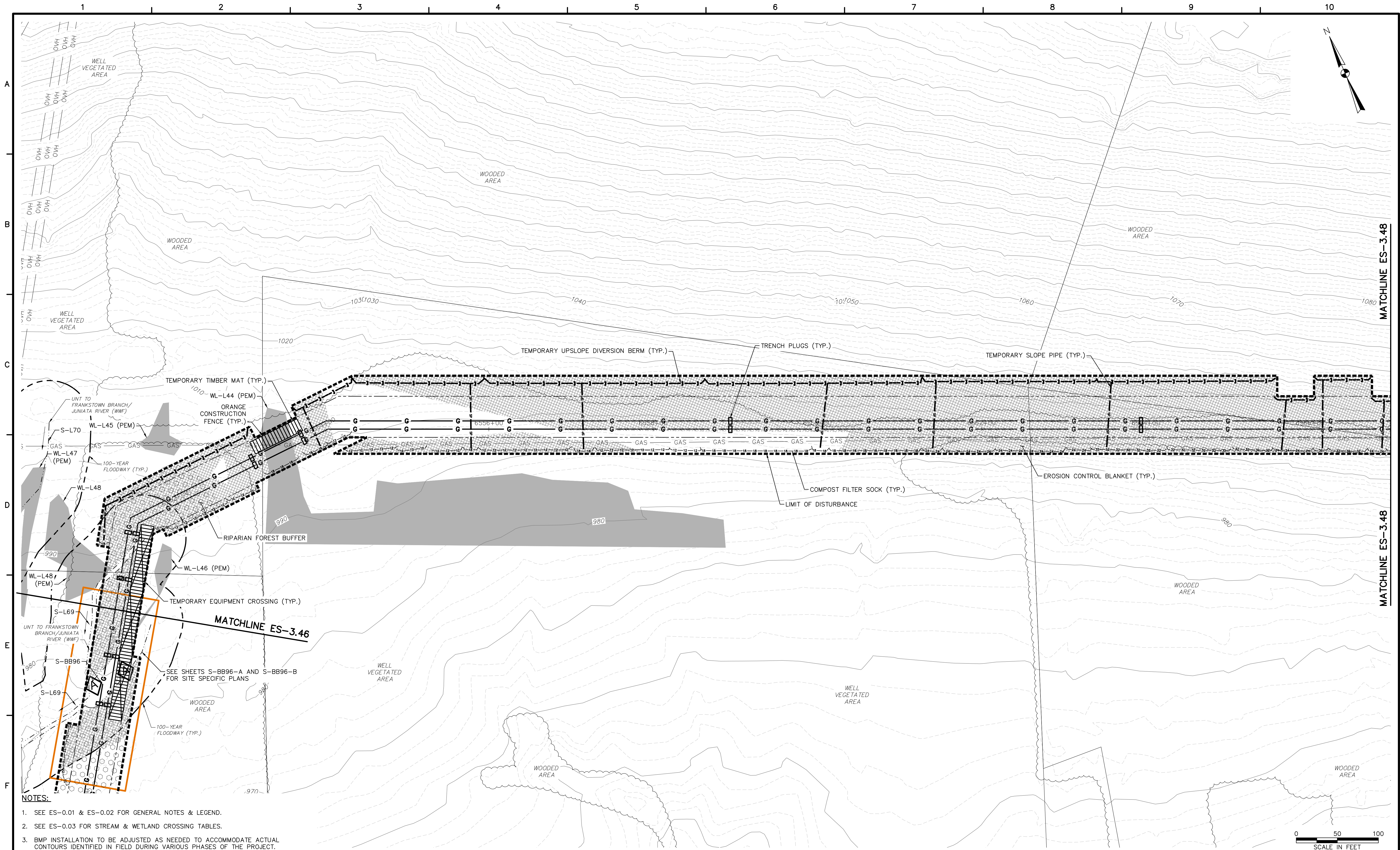
REVISIONS			
NO.	BY	DATE	REMARKS



SUNOCO PIPELINE L.P.
SINKING SPRING, PENNSYLVANIA
PENNSYLVANIA PIPELINE PROJECT
CONSTRUCTION SPREAD 3

1-20" & 1-16" PROPOSED WELDED STEEL NATURAL GAS LIQUIDS PIPELINES
BLAIR COUNTY CONSERVATION DISTRICT
EROSION & SEDIMENT CONTROL &
SITE RESTORATION PLAN
SHEET 46 OF 73

DATE: NOVEMBER 2016
PROJECT NO.: 112IC05958
DESIGNED BY: JB
DRAWN BY: BH
CHECKED BY: RS
COPYRIGHT TETRA TECH INC.
ES-3.46
SHEET 3.46 OF 102



MATCHLINE ES-3.48

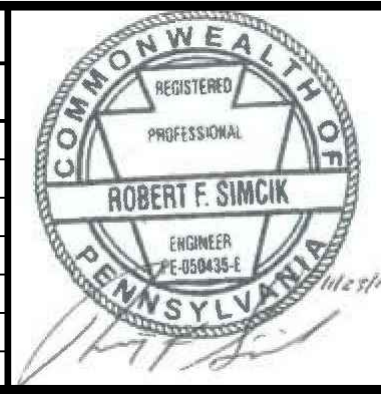
MATCHLINE ES-3.48

- NOTES:**
1. SEE ES-0.01 & ES-0.02 FOR GENERAL NOTES & LEGEND.
 2. SEE ES-0.03 FOR STREAM & WETLAND CROSSING TABLES.
 3. BMP INSTALLATION TO BE ADJUSTED AS NEEDED TO ACCOMMODATE ACTUAL CONTOURS IDENTIFIED IN FIELD DURING VARIOUS PHASES OF THE PROJECT.



TETRA TECH
www.tetrattech.com
661 ANDERSEN DRIVE - FOSTER PLAZA 7
PITTSBURGH, PA 15220
T: (412) 921-7090 | F: (412) 921-4040

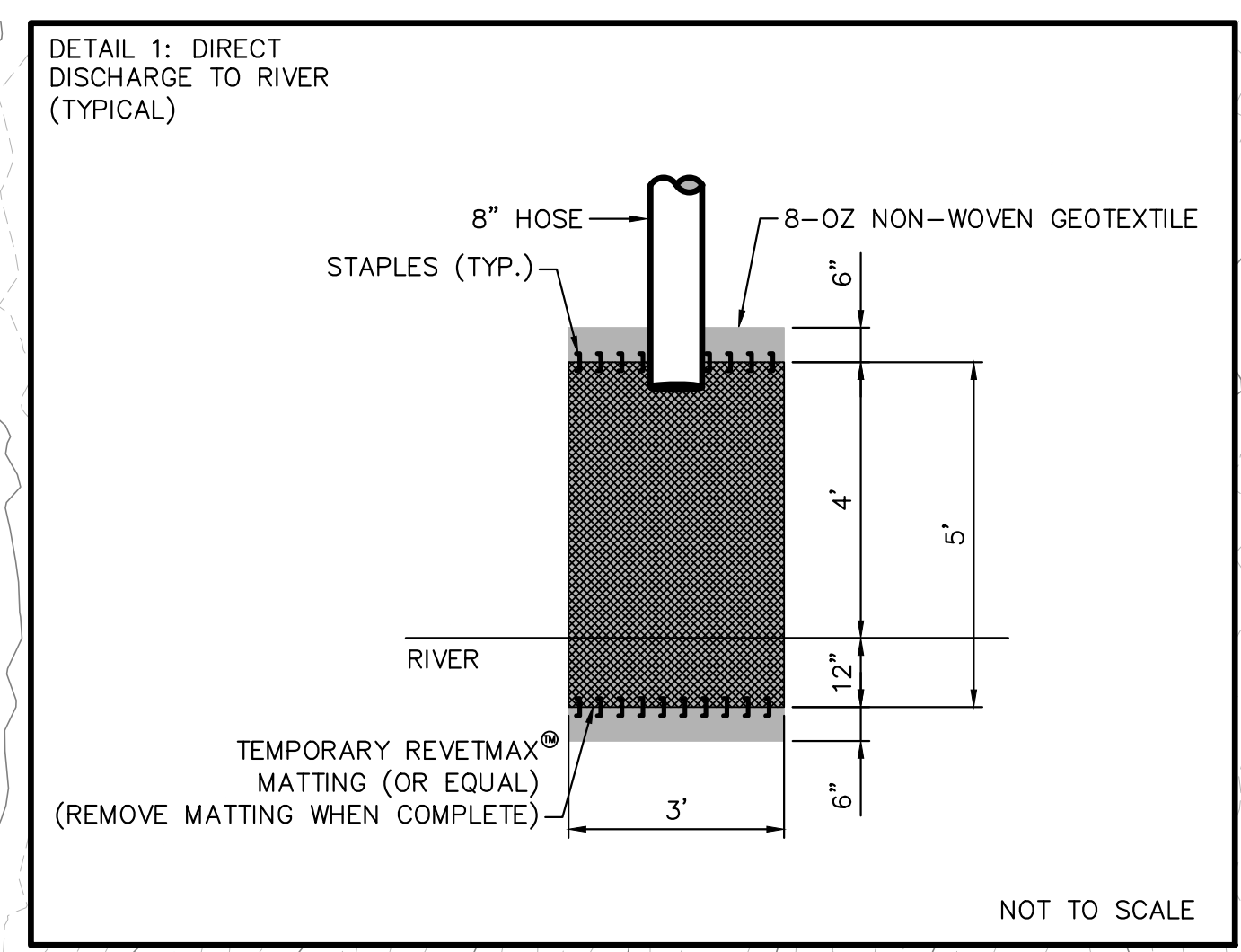
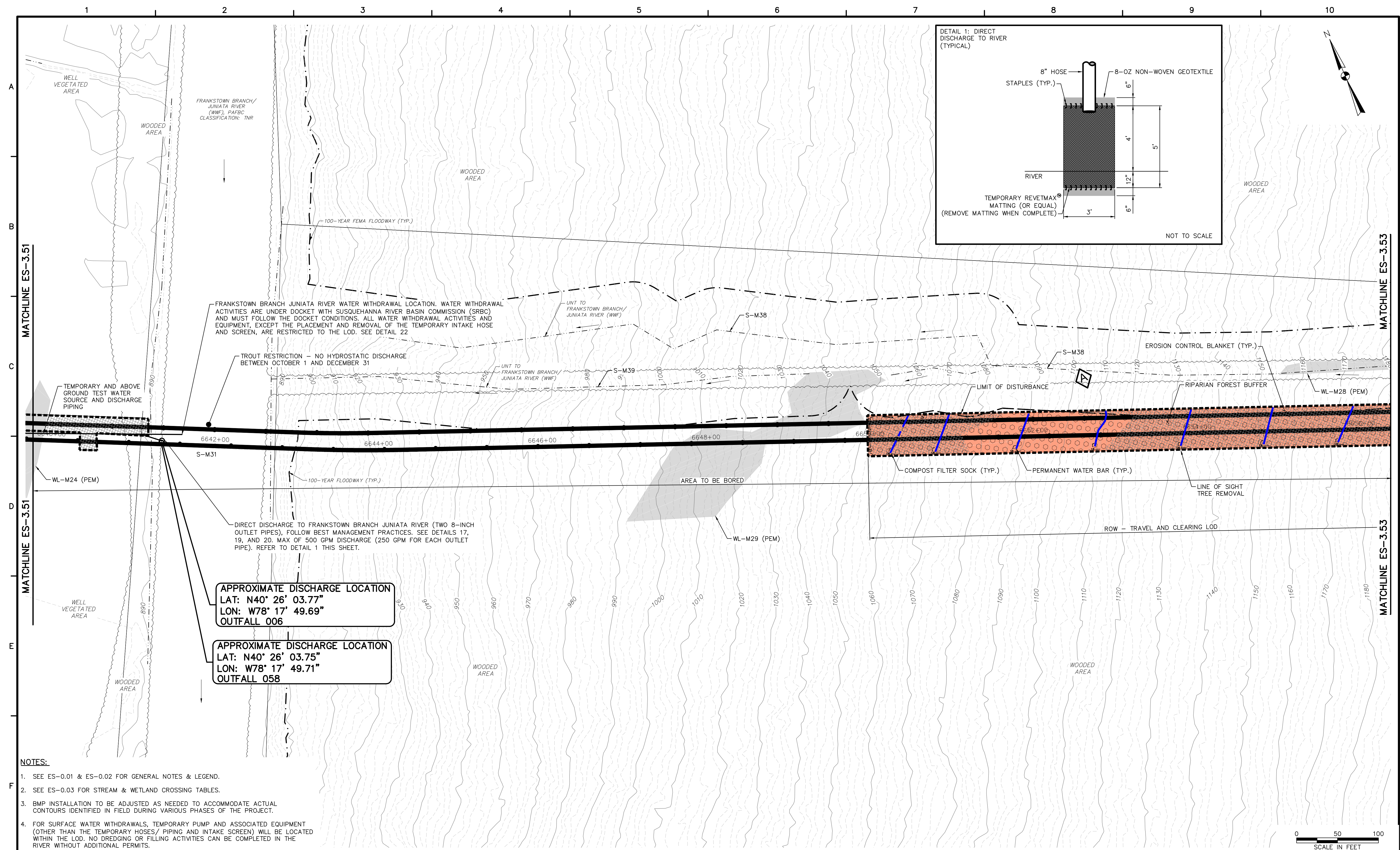
REVISIONS			
NO.	BY	DATE	REMARKS



SUNOCO PIPELINE L.P.
SINKING SPRING, PENNSYLVANIA
**PENNSYLVANIA PIPELINE PROJECT
CONSTRUCTION SPREAD 3**

1-20" & 1-16" PROPOSED WELDED STEEL NATURAL GAS LIQUIDS PIPELINES
**BLAIR COUNTY CONSERVATION DISTRICT
EROSION & SEDIMENT CONTROL &
SITE RESTORATION PLAN
SHEET 47 OF 73**

DATE:	NOVEMBER 2016
PROJECT NO.:	112IC05958
DESIGNED BY:	JB
DRAWN BY:	BH
CHECKED BY:	RS
COPYRIGHT TETRA TECH INC.	
ES-3.47	
SHEET 3.47 OF 102	



FRANKSTOWN BRANCH JUNIATA RIVER WATER WITHDRAWAL LOCATION. WATER WITHDRAWAL ACTIVITIES ARE UNDER DOCKET WITH SUSQUEHANNA RIVER BASIN COMMISSION (SRBC) AND MUST FOLLOW THE DOCKET CONDITIONS. ALL WATER WITHDRAWAL ACTIVITIES AND EQUIPMENT, EXCEPT THE PLACEMENT AND REMOVAL OF THE TEMPORARY INTAKE HOSE AND SCREEN, ARE RESTRICTED TO THE LOD. SEE DETAIL 22

TROUT RESTRICTION - NO HYDROSTATIC DISCHARGE BETWEEN OCTOBER 1 AND DECEMBER 31

DIRECT DISCHARGE TO FRANKSTOWN BRANCH JUNIATA RIVER (TWO 8-INCH OUTLET PIPES), FOLLOW BEST MANAGEMENT PRACTICES. SEE DETAILS 17, 19, AND 20. MAX OF 500 GPM DISCHARGE (250 GPM FOR EACH OUTLET PIPE). REFER TO DETAIL 1 THIS SHEET.

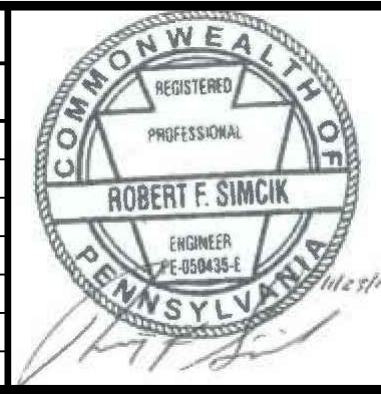
APPROXIMATE DISCHARGE LOCATION
LAT: N40° 26' 03.77"
LON: W78° 17' 49.69"
OUTFALL 006

APPROXIMATE DISCHARGE LOCATION
LAT: N40° 26' 03.75"
LON: W78° 17' 49.71"
OUTFALL 058

- NOTES:**
- SEE ES-0.01 & ES-0.02 FOR GENERAL NOTES & LEGEND.
 - SEE ES-0.03 FOR STREAM & WETLAND CROSSING TABLES.
 - BMP INSTALLATION TO BE ADJUSTED AS NEEDED TO ACCOMMODATE ACTUAL CONTOURS IDENTIFIED IN FIELD DURING VARIOUS PHASES OF THE PROJECT.
 - FOR SURFACE WATER WITHDRAWALS, TEMPORARY PUMP AND ASSOCIATED EQUIPMENT (OTHER THAN THE TEMPORARY HOSES/ PIPING AND INTAKE SCREEN) WILL BE LOCATED WITHIN THE LOD. NO DREDGING OR FILLING ACTIVITIES CAN BE COMPLETED IN THE RIVER WITHOUT ADDITIONAL PERMITS.

TETRA TECH
www.tetratotech.com
661 ANDERSEN DRIVE - FOSTER PLAZA 7
PITTSBURGH, PA 15220
T: (412) 921-7090 | F: (412) 921-4040

REVISIONS			
NO.	BY	DATE	REMARKS



SUNOCO PIPELINE L.P.
SINKING SPRING, PENNSYLVANIA
PENNSYLVANIA PIPELINE PROJECT
CONSTRUCTION SPREAD 3

1-20" & 1-16" PROPOSED WELDED STEEL NATURAL GAS LIQUIDS PIPELINES
BLAIR COUNTY CONSERVATION DISTRICT
EROSION & SEDIMENT CONTROL &
SITE RESTORATION PLAN
SHEET 52 OF 73

DATE:	NOVEMBER 2016
PROJECT NO.:	112IC05958
DESIGNED BY:	JB
DRAWN BY:	BH
CHECKED BY:	RS
COPYRIGHT TETRA TECH INC.	
ES-3.52	
SHEET 3.52 OF 102	

