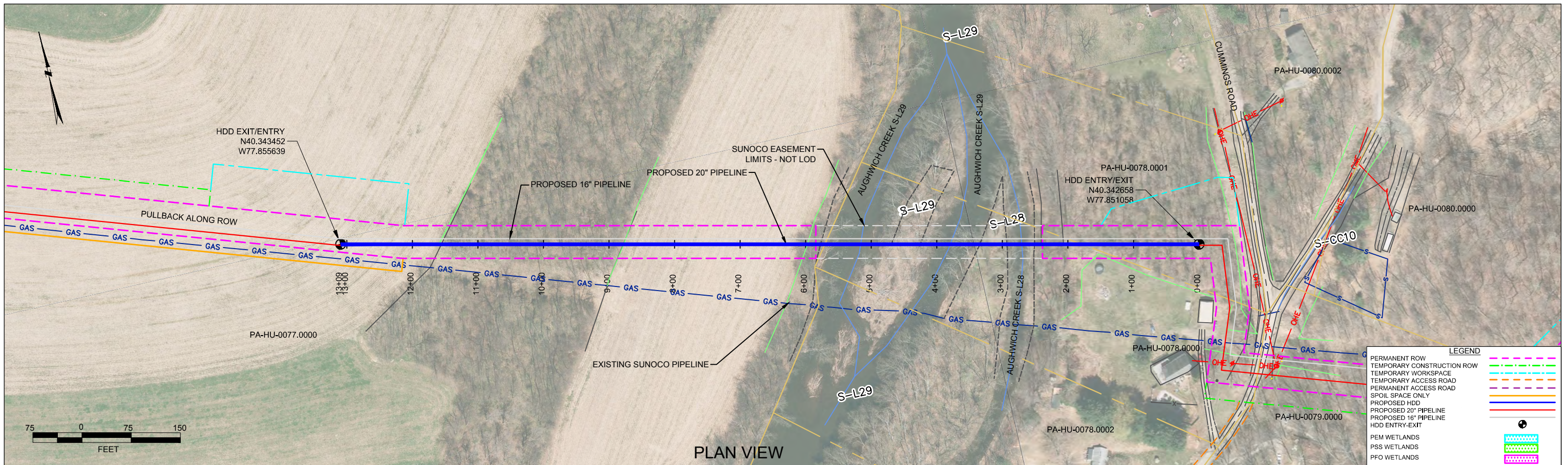


HDD PA-HU-0078.0000-WX (S-L29) (W-W46B) (S-L28)

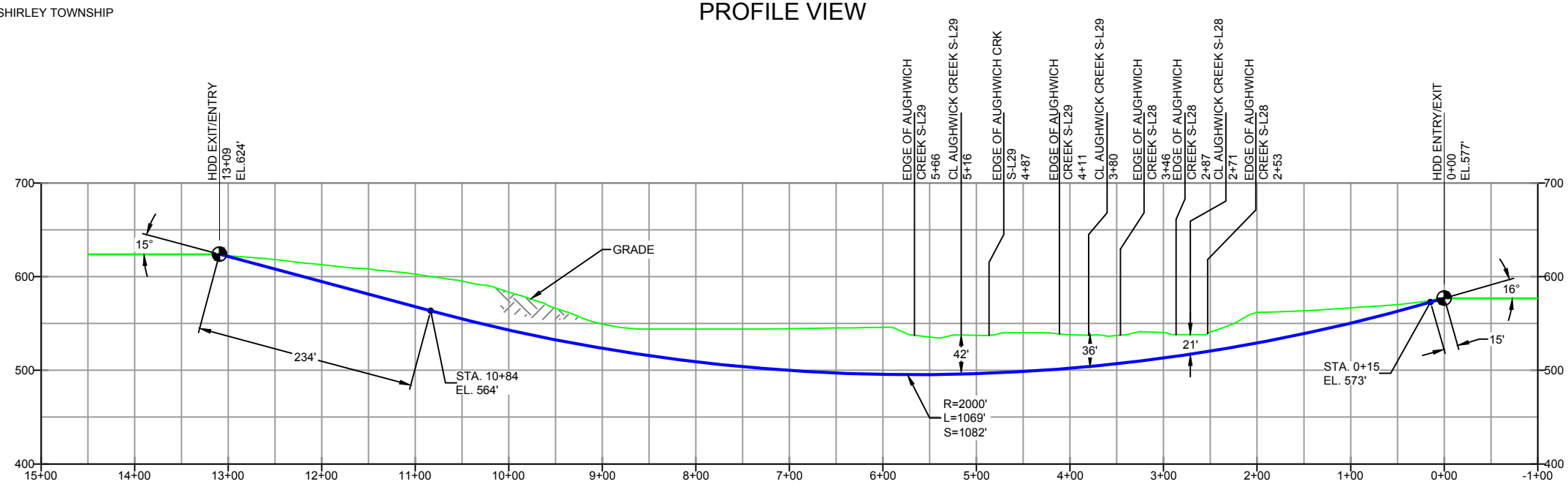
Given the design, the threat of inadvertent return has been reduced to the maximum extent practicable and in this case that threat is considered to be *low*. Implementing this design, along with adherence to the Pennsylvania Pipeline Project Inadvertent Return Contingency Plan will ensure inadvertent impacts, if they were to occur, are also minimized to the maximum extent.

The drill will enter/exit 750 feet from the edge of the western most boundary of the stream S-L29. The drill will travel beneath stream S-L29 for 60 feet. The drill will then travel under wetland W-W46B for 90 feet and then travel under stream S-L29 for another 60 feet. The drill will pass beneath the western most boundary of stream S-L28 and travel under stream S-L28 for 50 feet. Using the results of the geotechnical investigation, as well as several other data points, the entry/exit, angles, and depths have been configured to pass through the best substrates while maintaining pipe integrity (e.g., no large bends). The majority of the substrate that will be passed through is estimated to be grey weathered limestone. The drill will continue beneath stream S-L28 and will enter/exit 250 feet from the eastern most edge of stream S-L28.



PLAN VIEW

HUNTINGDON COUNTY, PENNSYLVANIA - SHIRLEY TOWNSHIP
S2-0153



PROFILE VIEW

DESIGN AND CONSTRUCTION:

- CONTRACTOR SHALL FIELD VERIFY DEPTH OF ALL EXISTING UTILITIES SHOWN OR NOT SHOWN ON THIS DRAWING.
- THE MINIMUM SEPARATION DISTANCE FROM EXISTING SUBSURFACE UTILITIES SHALL NOT BE LESS THAN 10 FEET AS MEASURED FROM THE OUTSIDE EDGE OF THE UTILITY TO OUTSIDE OF PROPOSED PIPELINE.
- DESIGNED IN ACCORDANCE WITH CFR 49 195 & ASME B31.4
- CROSSING PIPE SPECIFICATION:
HDD HORZ. LENGTH (L=): 1359'
HDD PIPE LENGTH (S=): 1383'
20" x 0.456" W.T., X-65, API5L, PSL2, ERW, BFW
COATING: 14-16 MILS FBE WITH 30-35 MIL ARO (POWERCRETE R95)
- INTERNAL DESIGN PRESSURE 1480 PSIG (SEAM FACTOR 1.0, DESIGN FACTOR 0.50).
- INSTALLATION METHOD: HORIZONTAL DIRECTIONAL DRILL (HDD).
- PIPELINE WARNING MARKERS SHALL BE INSTALLED ON BOTH SIDES OF ALL ROAD, RAILWAY, AND STREAM CROSSINGS.
- CARRIER PIPE NOT ENCASED.
- PIPE / AMBIENT TEMPERATURE MUST BE NO LESS THAN 30°F DURING PULLBACK WITHOUT PRIOR WRITTEN APPROVAL FROM THE ENGINEER.
- CONDUCT 4-HOUR PRE-INSTALLATION HYDROTEST OF HDD PIPE STRING TO MINIMUM 1850 PSIG.
- SEE SUNOCO PENNSYLVANIA PIPELINE PROJECT ESRI WEBMAP FOR ACCESS ROAD ALIGNMENT.
- SUNOCO PIPELINE, L.P.'S HORIZONTAL DIRECTIONAL DRILL INADVERTENT RETURN CONTINGENCY PLAN WILL BE IMPLEMENTED AT ALL TIMES.
- SUNOCO PIPELINE, L.P.'S EROSION AND SEDIMENTATION CONTROL PLAN WILL BE IMPLEMENTED AT ALL TIMES.

NOTES

- ALL COORDINATES SHOWN ARE IN LATITUDE AND LONGITUDE. ALL MSL ELEVATIONS ARE NAD83
- STATIONING IS BASED ON HORIZONTAL DISTANCES.
- ROONEY ENGINEERING, INC. AND SUNOCO PIPELINE, LP ARE NOT RESPONSIBLE FOR LOCATION OF FOREIGN UTILITIES SHOWN IN PLOT PLAN OR PROFILE. THE INFORMATION SHOWN HEREON IS FURNISHED WITHOUT LIABILITY ON THE PART OF ROONEY ENGINEERING, INC. AND SUNOCO PIPELINE, LP. FOR ANY DAMAGES RESULTING FROM ERRORS OR OMISSIONS THEREIN.
- CONTRACTOR IS RESPONSIBLE FOR LOCATING ALL UTILITIES. CONTACT ONE CALL AT 811 PRIOR TO DIGGING.
- SUNOCO EMERGENCY HOTLINE NUMBER IS #1-800-786-7440.

REF. DRAWING		EROSION & SEDIMENT PLAN	
ES-3.60	TO	ES-3.61	
SHEET 37	TO	SHEET 38	AERIAL SITE PLAN
			EP2 REVISED PER PADEP COMMENTS RECEIVED 09-06-16
			EP1 REVISED PER PADEP COMMENTS
			EP
			B ISSUED FOR BID
			A ISSUED FOR REVIEW
DWG NO	TO	DWG NO	DESCRIPTION

REVISIONS					
NO.	DATE	CHK	DATE	APP	DATE
DLM	09/30/16	RMB	09/30/16	AAW	09/30/16
DLM	05/25/16	RMB	05/25/16	AAW	05/25/16
MRS	03/15/16	RMB	03/15/16	AAW	03/15/16
DLM	07/31/15	RMB	07/31/15	AAW	07/31/15
JAM	03/24/15	RMB	03/24/15	AAW	03/24/15

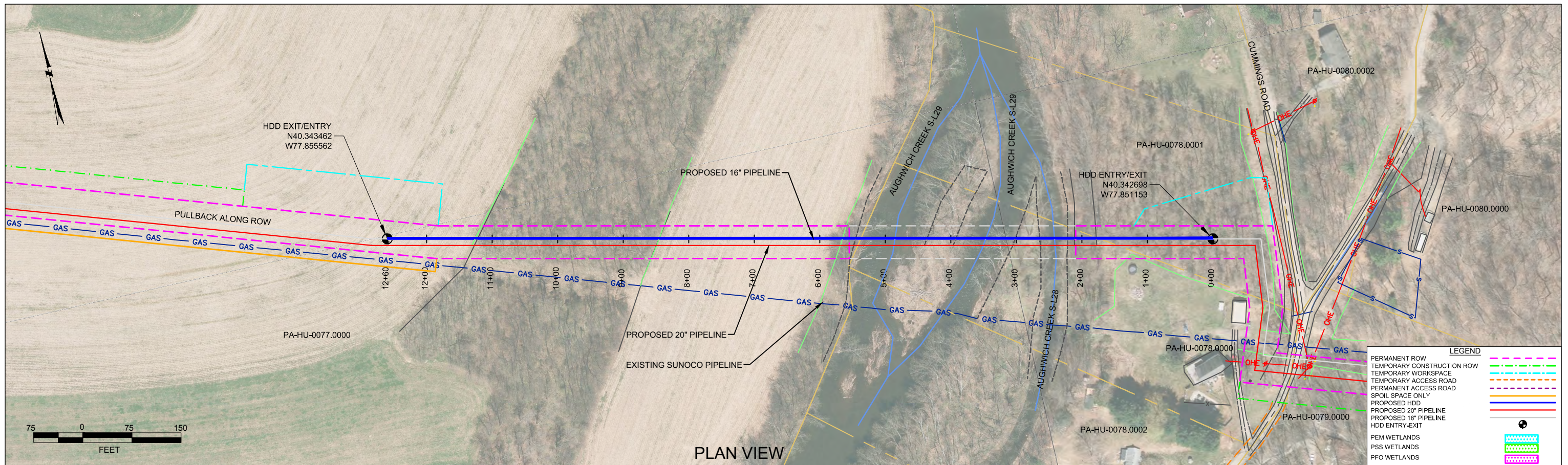
Sunoco Logistics Partners L.P.

TETRA TECH ROONEY
(303) 792-5911

SUNOCO PIPELINE, L.P.

20-INCH HORIZONTAL DIRECTIONAL DRILL
AUGHWICK CREEK
PENNSYLVANIA PIPELINE PROJECT

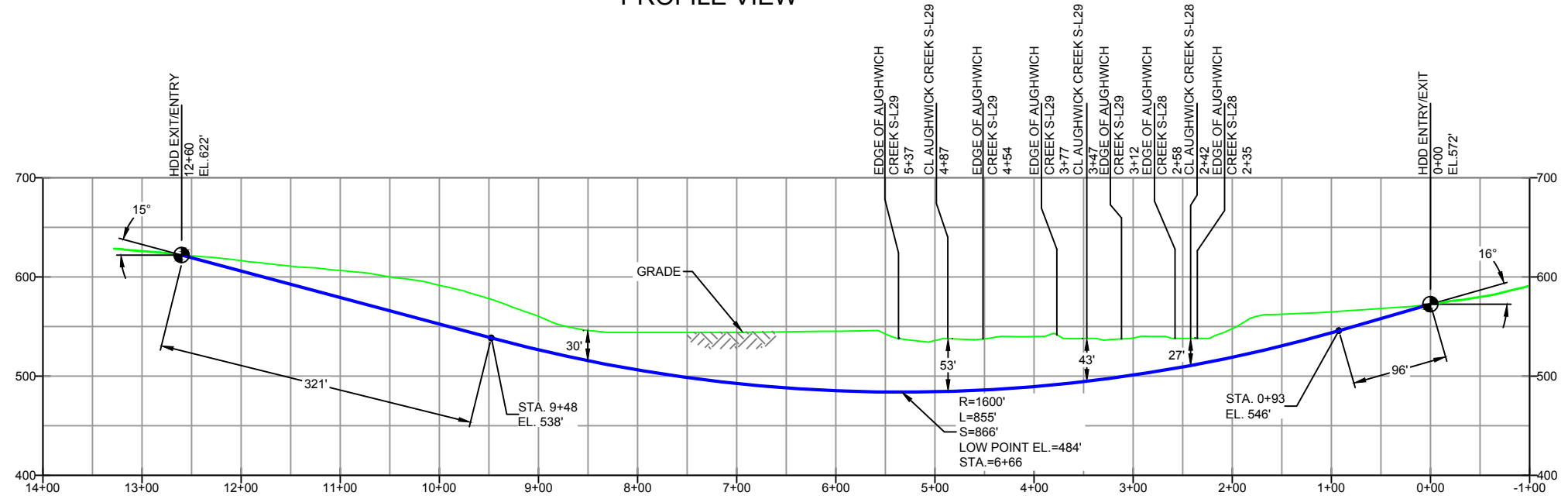
SCALE: 1"=150'
DWG. NO: PA-HU-0078.0000-WX



PLAN VIEW

HUNTINGDON COUNTY, PENNSYLVANIA - SHIRLEY TOWNSHIP
S2-0153-16

PROFILE VIEW



- DESIGN AND CONSTRUCTION:
- CONTRACTOR SHALL FIELD VERIFY DEPTH OF ALL EXISTING UTILITIES SHOWN OR NOT SHOWN ON THIS DRAWING.
 - THE MINIMUM SEPARATION DISTANCE FROM EXISTING SUBSURFACE UTILITIES SHALL NOT BE LESS THAN 10 FEET AS MEASURED FROM THE OUTSIDE EDGE OF THE UTILITY TO OUTSIDE OF PROPOSED PIPELINE.
 - DESIGNED IN ACCORDANCE WITH CFR 49 195 & ASME B31.4
 - CROSSING PIPE SPECIFICATION:
HDD HORZ. LENGTH (L-): 1310'
HDD PIPE LENGTH (S-): 1337'
16" x 0.438" W.T., X-70, API5L, PSL2, ERW, BFW
COATING: 14-16 MILS FBW WITH 30-35 MIL ARO (POWERCRETE R95)
 - INTERNAL DESIGN PRESSURE 1480 PSIG (SEAM FACTOR 1.0, DESIGN FACTOR 0.50).
 - INSTALLATION METHOD: HORIZONTAL DIRECTIONAL DRILL (HDD).
 - PIPELINE WARNING MARKERS SHALL BE INSTALLED ON BOTH SIDES OF ALL ROAD, RAILWAY, AND STREAM CROSSINGS.
 - CARRIER PIPE NOT ENCASED
 - PIPE / AMBIENT TEMPERATURE MUST BE NO LESS THAN 30°F DURING PULLBACK WITHOUT PRIOR WRITTEN APPROVAL FROM THE ENGINEER
 - CONDUCT 4-HOUR PRE-INSTALLATION HYDROTEST OF HDD PIPE STRING TO MINIMUM 1850 PSIG.
 - SEE SUNOCO PENNSYLVANIA PIPELINE PROJECT ESRI WEBMAP FOR ACCESS ROAD ALIGNMENT.
 - SUNOCO PIPELINE, L.P.'S HORIZONTAL DIRECTIONAL DRILL INADVERTENT RETURN CONTINGENCY PLAN WILL BE IMPLEMENTED AT ALL TIMES.
 - SUNOCO PIPELINE, L.P.'S EROSION AND SEDIMENTATION CONTROL PLAN WILL BE IMPLEMENTED AT ALL TIMES.

NOTES	
1.	ALL COORDINATES SHOWN ARE IN LATITUDE AND LONGITUDE. ALL MSL ELEVATIONS ARE NAD83
2.	STATIONING IS BASED ON HORIZONTAL DISTANCES
3.	ROONEY ENGINEERING, INC. AND SUNOCO PIPELINE, L.P. ARE NOT RESPONSIBLE FOR LOCATION OF FOREIGN UTILITIES SHOWN IN PLOT PLAN OR PROFILE. THE INFORMATION SHOWN HEREON IS FURNISHED WITHOUT LIABILITY ON THE PART OF ROONEY ENGINEERING, INC. AND SUNOCO PIPELINE, L.P. FOR ANY DAMAGES RESULTING FROM ERRORS OR OMISSIONS THEREIN.
4.	CONTRACTOR IS RESPONSIBLE FOR LOCATING ALL UTILITIES. CONTACT ONE CALL AT 811 PRIOR TO DIGGING.
5.	SUNOCO EMERGENCY HOTLINE NUMBER IS #1-800-786-7440.

REF. DRAWING		REVISIONS		
ES-3.60	TO ES-3.61	EROSION & SEDIMENT PLAN		
SHEET 37	TO SHEET 38	AERIAL SITE PLAN		
		EP2	REVISED PER PADEP COMMENTS RECEIVED 09-06-16	
		EP1	REVISED PER PADEP COMMENTS	
		EP		
		A	ISSUED FOR BID	
DWG NO	DWG NO	DESCRIPTION	NO.	DESCRIPTION

Sunoco Logistics Partners L.P.

TETRA TECH ROONEY
(303) 792-5911

SUNOCO PIPELINE, L.P.

16-INCH HORIZONTAL DIRECTIONAL DRILL
AUGHWICK CREEK
PENNSYLVANIA PIPELINE PROJECT

SCALE: 1"=150' DWG. NO: PA-HU-0078.0000-WX-16



LEGEND:

⊙ Geotechnical Soil Boring (SB) Locations



TETRA TECH

GEOTECHNICAL BORING LOCATIONS

HDD S2-0153

HUNTINGDON COUNTY, SHIRLEY TOWNSHIP, PA

SUNOCO PENNSYLVANIA PIPELINE PROJECT



TETRA TECH

240 Continental Drive, Suite 200
 Newark, Delaware 19713
 302.738.7551
 fax: 302.454.5988

TEST BORING LOG

Project Name:		SUNOCO PENNSYLVANIA PIPELINE PROJECT			Project No.: 103IP3406		
Project Location:		US 522, SHIRLEYSBURG, PA			Page 1 of 1		
HDD No.:		S2-0153		Dates(s) Drilled: 01-22-15		Inspector: E. WATT	
Boring No.:		SB-01		Drilling Method: SPT - ASTM D1586		Driller: S. HOFFER	
Drilling Contractor:		HAD DRILLING		Groundwater Depth (ft): NOT ENCOUNTERED		Total Depth (ft): 6.7	
Boring Location Coordinates:		40°20'34.37"N			77°51'20.29"W		

Sample No.	Sample Depth (ft)		Strata Depth (ft)		Recov. (in)	Strata (USCS)	Description of Materials	6" Increment Blows *				N	
	From	To	From	To									
			0.0	0.4			TOPSOIL (5").						
1	3.0	5.0	0.4		24	CL	MOTTLED BROWN, ORANGE BROWN, RED BROWN AND YELLOW BRWN	5	12	10	15	22	
							SILTY CLAY WITH SOME F-SAND, A LITTLE F-GRAVEL. (USCS: CL).						
2	6.5	6.7			1.5		ORANGE BROWN SILTY CLAY WITH SOME FINE SAND, AND	50/2"					>50
				6.7			SOME SANDSTONE GRAVEL.						
							AUGER REFUSAL AT 6.5'. OFF-SET 23' EAST AND CONTINUOUSLY						
							AUGERED TO REFUSAL AT 6.5'. OFF-SET CLOSER TO ORIGINAL						
							LOCATION AND CONTINUOUSLY AUGERED TO 6.2'.						
							CAVED AT 5'.						
							REFUSAL MATERIAL MAY BE DUE TO BOULDERY SUBSURFACE,						
							COULD NOT PENETRATE DEEPER.						
							SANDSTONE OUTCROPS OBSERVED AT SURFACE IN VICINITY OF						
							BORING.						

Notes/Comments:
Pocket Penetrometer Testing DR: DECOMPOSED ROCK
 S1: >4 TSF

Strata (USCS) Designations are approximated based on visual review, except where indicated in Description of Materials.

* Number of blows of 140 lb. Hammer dropped 30 in. required to drive 2 in. split-spoon sampler in 6 in. increments.
 N: Number of blows to drive spoon from 6" to 18" interval.



TETRA TECH
 240 Continental Drive, Suite 200
 Newark, Delaware 19713
 302.738.7551
 fax: 302.454.5988

TEST BORING LOG

Project Name:	SUNOCO PENNSYLVANIA PIPELINE PROJECT			Project No.:	103IP3406
Project Location:	US 522, WEST SIDE OF AUGHWIZK CREEK, MOUNT UNION, PA			Page 1 of 1	
HDD No.:	S2-0153	Dates(s) Drilled:	01-23-15	Inspector:	E. WATT
Boring No.:	SB-02	Drilling Method:	SPT - ASTM D1586	Driller:	S. HOFFER
Drilling Contractor:	HAD DRILLING	Groundwater Depth (ft):	NOT ENCOUNTERED	Total Depth (ft):	36.9
Boring Location Coordinates:	40°20'32.84"N		77°51'13.34"W		

Sample No.	Sample Depth (ft)		Strata Depth (ft)		Recov. (in)	Strata (USCS)	Description of Materials	6" Increment Blows *				N	
	From	To	From	To									
			0.0	0.3			TOPSOIL (4")						
1	3.0	5.0	0.3		20	CL	ORANGE BROWN SILTY CLAY WITH A LITTLE FINE SAND.	3	6	7	8	13	
2	8.0	10.0		9.9	20		MOTTLED (BROWN AND DARK BROWN) SILTY CLAY WITH SOME FINE SAND. (USCS: CL).	3	10	12	22	22	
3	13.0	15.0	9.9		24	SC/CL	YELLOWISH BROWN FINE TO MEDIUM SAND AND SILTY CLAY, WITH SOME UNWEATHERED SHALE GRAVEL.	5	11	12	18	23	
4	18.0	18.9		21.0	12		YELLOWISH BROWN FINE TO MEDIUM SAND AND SILTY CLAY, WITH SOME UNWEATHERED SHALE GRAVEL. (USCS: SC/CL).	7	50/5"				>50
5	23.0	23.9	21.0		13	WEATHERED ROCK	GRAY AND GREENISH GRAY WEATHERED SHALE.	13	50/5"				>50
6	27.0	27.3		27.7	4		GRAY WEATHERED LIMESTONE.	50/4"					>50
							AUGER REFUSAL AT 27.7'.						
							<u>ROCK CORING</u>						
RUN 1	27.7	31.9	27.70		42	FRAGMENTED LIMESTONE ROCK	GRAY MODERATELY FRACTURED LIMESTONE. FRACTURES AT 28.24, 29.14, 29.5. OXIDATION LENSES THROUGHOUT.	TCR: 83%, SCR: 48%, RQD: 44%					
			29.50				GRAY INTENSELY FRACTURED LIMESTONE.						
			30.10				GRAY MODERATELY FRACTURED LIMESTONE.						
			30.70	31.90			GRAY VERY INTENSELY FRACTURED LIMESTONE.						
RUN 2	31.9	36.9	31.90	33.88	54		GRAY MODERATELY FRACTURED LIMESTONE.	TCR: 55%, SCR: 27%, RQD: 27%					
			33.88				GRAY VERY INTENSELY FRACTURED AND WEATHERED LIMESTONE.						
			36.90			FRACTURE BREAK AT 33.88 APPEARS TO BE VERTICAL.							
							<u>CORE TESTING RESULTS (RUN 1, DEPTH 30.2):</u>						
							COMPRESSIVE STRENGTH: 2,110 PSI						
							UNIT WEIGHT: 161.6 PCF						
							<u>CORE TESTING RESULTS (RUN 2, DEPTH 32.5):</u>						
							COMPRESSIVE STRENGTH: 840 PSI						
							UNIT WEIGHT: 160.2 PCF						

Notes/Comments:

Pocket Pentrometer Testing
 S1: > 4 TSF
 S2: > 4 TSF

CAVED AT 27".

Strata (USCS) Designations are approximated based on visual review, except where indicated in Description of Materials.

* Number of blows of 140 lb. Hammer dropped 30 in. required to drive 2 in. split-spoon sampler in 6 in. increments.

N: Number of blows to drive spoon from 6" to 18" interval.

**GEOTECHNICAL LABORATORY TESTING SUMMARY
SUNOCO PENNSYLVANIA PIPELINE PROJECT
HDD S2-0153**

HDD No.	Test Boring No.	Sample No.	Depth of Sample (ft.)		Water Content, % (ASTM D2216)	Percent Silts/Clays, % (ASTM D1140)	Atterburg Limits (ASTM D4318)			USCS Classif. (ASTM D2487)
			From	To			Liquid Limit, %	Plastic Limit, %	Plasticity Index, %	
SB-0153	SB-01	1	3.0	5.0	16.8	71.1	32	20	12	CL
		2	6.5	6.7	16.0	72.4	-	-	-	-
	SB-02	1	3.0	5.0	19.9	86.8	-	-	-	-
		2	8.0	10.0	20.4	75.1	35	21	14	CL
		3	13.0	15.0	16.8	42.5	-	-	-	-
		4	18.0	18.9	12.5	48.9	31	20	11	SC/CL
		5	23.0	23.9	13.5	42.6	-	-	-	-

Rock Core Testing Results				
Boring No.	Core Run	Approximate Depth (ft)	Compressive Strength (psi)	Unit Weight (pcf)
SB-02	1	30.2	2,110	161.6
SB-02	2	32.5	840	160.2

Notes:

- 1) Sample depths based on feet below grade at time of exploration.

**REGIONAL GEOLOGY SUMMARY
SUNOCO PENNSYLVANIA PIPELINE PROJECT
HDD S2-0153**

HDD No.	NAME	BORING NO.	REGIONAL GEOLOGY DESCRIPTION	GENERAL TOPOGRAPHIC SETTING	BEDROCK FORMATION	GENERAL ROCK TYPE	APPROX MAX FM THICKNESS (FT)	DEPTH TO ROCK (Ft bgs) based on nearby well drilling logs	NOTES / COMMENTS
S2-0153	Aughwick Creek	SB-01	Onondaga and Old Port Formation - (undivided) consists of two members - the upper Selinsgrove Limestone and the lower calcereous Needmore Shale.	Rolling hills/ridges of med relief (<100 ft)	Onondaga	Limestone and calcareous shale with occasional chert	200 (Onondaga)	3-67 (average DTB range 5-30 ftbg)	Yields range from 20-75 gpm
		Old Port			100-200 (Old Port)				

Note : Source of well log data - <http://www.dcnr.state.pa.us/topogeo/groundwater/pagwis/records/index.htm>. All other sources as referenced in comments section.

**ROCK CORE DESCRIPTION SUMMARY
SUNOCO PENNSYLVANIA PIPELINE PROJECT
HDD S2-0153**

Location	Boring No.	Core Run	Core Depth (ft)		TCR (%)	SCR (%)	RQD (%)	Depth (ft)		Weathering	Classification	Bedding Thickness (ft)	Color	Discontinuity Data
			From	To				From	To					
S2-0153	SB-2	1	27.7	31.9	83	48	44	27.7	31.9	Slight to moderate	Limestone	Massive	Light to Dark	Moderately fractured, ranging from 0° to 75°, Avg. 48°
		2	31.9	36.9	55	27	27	31.9	33.9	Slight	Limestone	Massive	Dark Gray	Slightly fractured, ranging from 30° to 60°, Avg. 45°
								33.9	36.9	Heavily	Limestone	Massive	Light Gray	Heavily fractured and weathered, rubble

FIELD DESCRIPTION AND LOGGING SYSTEM FOR SOIL EXPLORATION

GRANULAR SOILS

(Sand, Gravel & Combinations)

<u>Density</u>	<u>N (blows)*</u>
Very Loose	5 or less
Loose	6 to 10
Medium Dense	11 to 30
Dense	31 to 50
Very Dense	51 or more

Particle Size Identification

Boulders	8 in. diameter or more
Cobbles	3 to 8 in. diameter
Gravel	Coarse (C) 3 in. to ¾ in. sieve Fine (F) ¾ in. to No. 4 sieve
Sand	Coarse (C) No. 4 to No. 10 sieve (4.75mm-2.00mm) Medium (M) No. 10 to No. 40 sieve (2.00mm – 0.425mm) Fine (F) No. 40 to No. 200 sieve (0.425 – 0.074mm)
Silt/Clay	Less Than a No. 200 sieve (<0.074mm)

Relative Proportions

<u>Description Term</u>	<u>Percent</u>
Trace	1 - 10
Little	11 - 20
Some	21 - 35
And	36 - 50

COHESIVE SOILS

(Silt, Clay & Combinations)

<u>Consistency</u>	<u>N (blows)*</u>
Very Soft	3 or less
Soft	4 to 5
Medium Stiff	6 to 10
Stiff	11 to 15
Very Stiff	16 to 30
Hard	31 or more

Plasticity

<u>Degree of Plasticity</u>	<u>Plasticity Index</u>
None to Slight	0 - 4
Slight	5 - 7
Medium	8- 22
High to Very High	> 22

ROCK

(Rock Cores)

<u>Rock Quality Designation (RQD), %</u>	<u>Rock Quality Description</u>
0-25	Very Poor
25-50	Poor
50-75	Fair
75-90	Good
90-100	Excellent

***N - Standard Penetration Resistance.** Driving a 2.0" O.D., 1-3/8" I.D. sampler a distance of 18 inches into undisturbed soil with a 140 pound hammer free falling a distance of 30.0 inches. The number of hammer blows to drive the sampler through each 6 inch interval is recorded; the number of blows required to drive the sampler through the final 12 inch interval is termed the Standard Penetration Resistance (SPR) N-value. For example, blow counts of 6/8/9 (through three 6-inch intervals) results in an SPR N-value of 17 (8+9).

Groundwater observations were made at the times indicated. Groundwater elevations fluctuate throughout a given year, depending on actual field porosity and variations in seasonal and annual precipitation.

UNIFIED SOIL CLASSIFICATION SYSTEM [Casagrande (1948)]

Major Divisions		Group Symbols	Typical Descriptions	Laboratory Classifications			
Coarse Grained Soils (More than half of material is larger than No. 200 sieve)	Gravels (More than half of coarse fraction is larger than No. 4 sieve size)	Clean gravel (Little or no fines)	GW	Well-graded gravels, gravel-sand mixtures, little or no fines	$C_u = \frac{D_{60}}{D_{10}}$ greater than 4; $C_c = \frac{(D_{30})^2}{D_{10} \times D_{60}}$ between 1 and 3 Not meeting C_u or C_c requirements for GW		
			GP	Poorly graded gravels, gravel-sand mixtures, little or no fines			
		Gravel with fines (Appreciable amount of fines)	GM	Silty gravels, gravel-sand-silt mixtures	Atterberg limits below A Line or I_p less than 4 Atterberg limits above A line with I_p greater than 7 Limits plotting in hatched zone with I_p between 4 and 7 are borderline cases requiring use of dual symbols		
			GC	Clayey gravels, gravel-sand-clay mixtures			
	Sands (More than half of coarse fraction is smaller than No. 4 Sieve)	Clean sands (Little or no fines)	SW	Well graded sands, gravelly sands, little or no fines	$C_u = \frac{D_{60}}{D_{10}}$ greater than 6; $C_c = \frac{(D_{30})^2}{D_{10} \times D_{60}}$ between 1 and 3 Not meeting C_u or C_c requirements for SW		
			SP	Poorly graded sands, gravelly sands, little or no fines			
		Sands with fines (Appreciable amount of fines)	SM	Silty sands, sand-silt mixtures	Atterberg limits below A Line or I_p less than 4 Atterberg limits above A line with I_p greater than 7 Limits Plotting in hatched zone with I_p between 4 and 7 are borderline cases requiring use of dual symbols		
			SC	Clayey sands, sand-clay mixtures			
		Determine Percentage of sand and gravel from grain size curve. Depending on Percentage of fines (fraction smaller than No. 200 sieve), coarse-grained soils are classified as follows: Less than 5 percent GW, GP, SW, SP More than 12 percent GM, GC, SM, SC 5 to 12 percent Borderline cases requiring dual symbols ⁽¹⁾					
		Major Divisions		Group Symbols	Typical Descriptions	For soils plotting nearly on A line use dual symbols i.e., $I_p = 29.5$, $w_L = 60$ gives CH-MH. When w_L is near 50 use CL-CH or ML-MH. Take near as ± 2 percent.	
Fine-grained soils (More than half of material is smaller than No. 200 sieve)	Silt and clays (Liquid limit less than 50)	ML	Inorganic silts and very fine sands, rock flour, silty or clayey fine sands, or clayey silts with slight plasticity				
		CL	Inorganic clays of low to medium plasticity, gravelly clays, sandy clays, silty clays, lean clays				
		OL	Organic silts and organic silty clays of low plasticity				
	Silt and Clays (Liquid limit greater than 50)	MH	Inorganic silts, micaceous or diatomaceous fine sandy or silty soils, elastic silts				
		CH	Inorganic clays of high plasticity, fat clays				
		OH	Organic clays of medium to high plasticity, organic silts				
	Highly organic soils	Pt	Peat and other highly organic soils				

(1) Borderline classifications, used for soils possessing characteristics of two groups, are designated by combinations of group symbols. For example: GW-GC. well-graded gravel-sand mixture with clay binder.