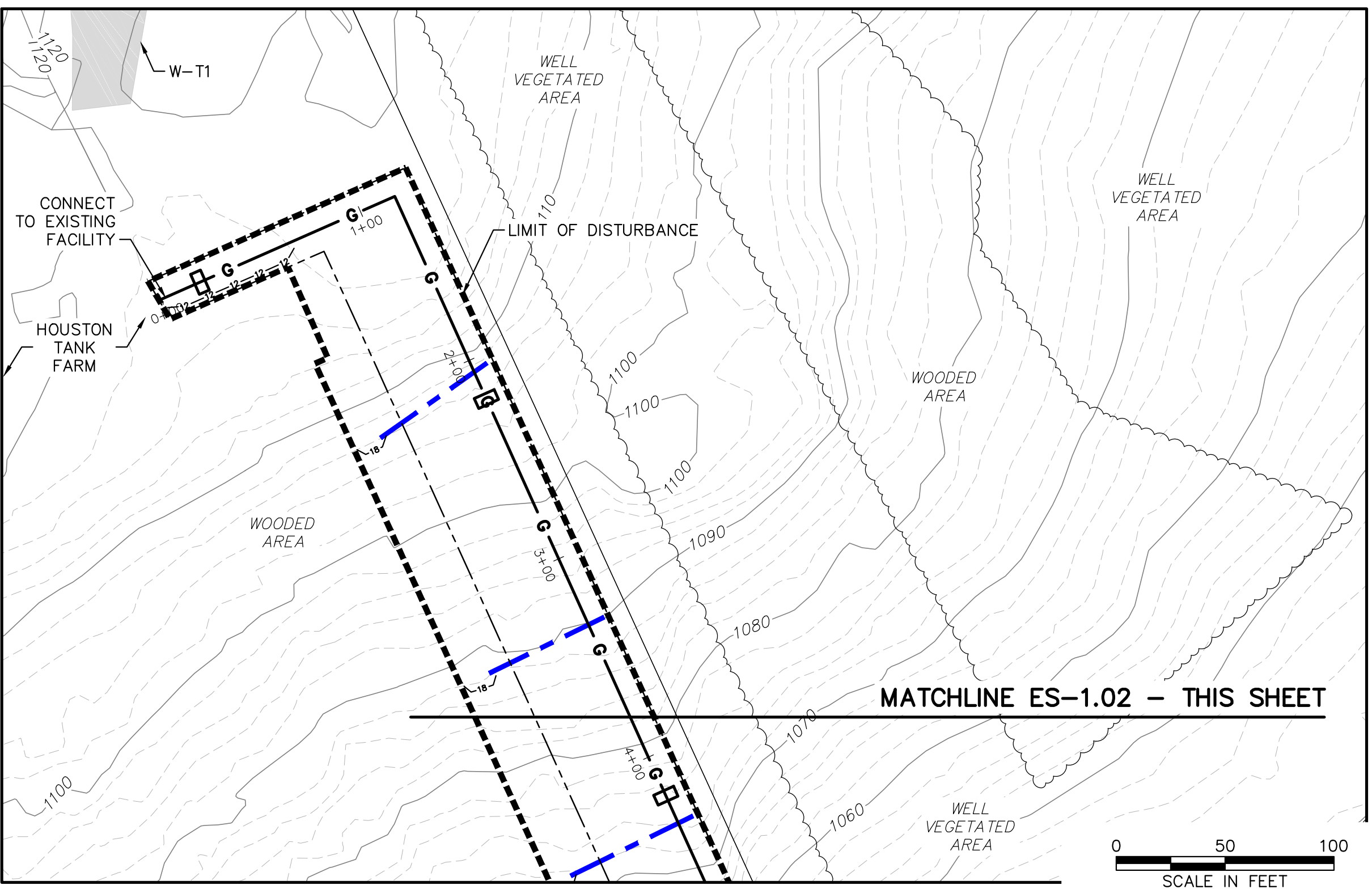
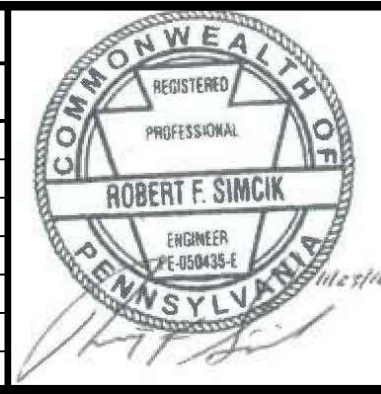


- NOTES:**
1. SEE ES-0.01 & ES-0.02 FOR GENERAL NOTES & LEGEND.
  2. SEE ES-0.03 FOR STREAM & WETLAND CROSSING TABLES.
  3. BMP INSTALLATION TO BE ADJUSTED AS NEEDED TO ACCOMMODATE ACTUAL CONTOURS IDENTIFIED IN FIELD DURING VARIOUS PHASES OF THE PROJECT.



**TETRA TECH**  
www.tetrattech.com  
661 ANDERSEN DRIVE - FOSTER PLAZA 7  
PITTSBURGH, PA 15220  
T: (412) 921-7090 | F: (412) 921-4040

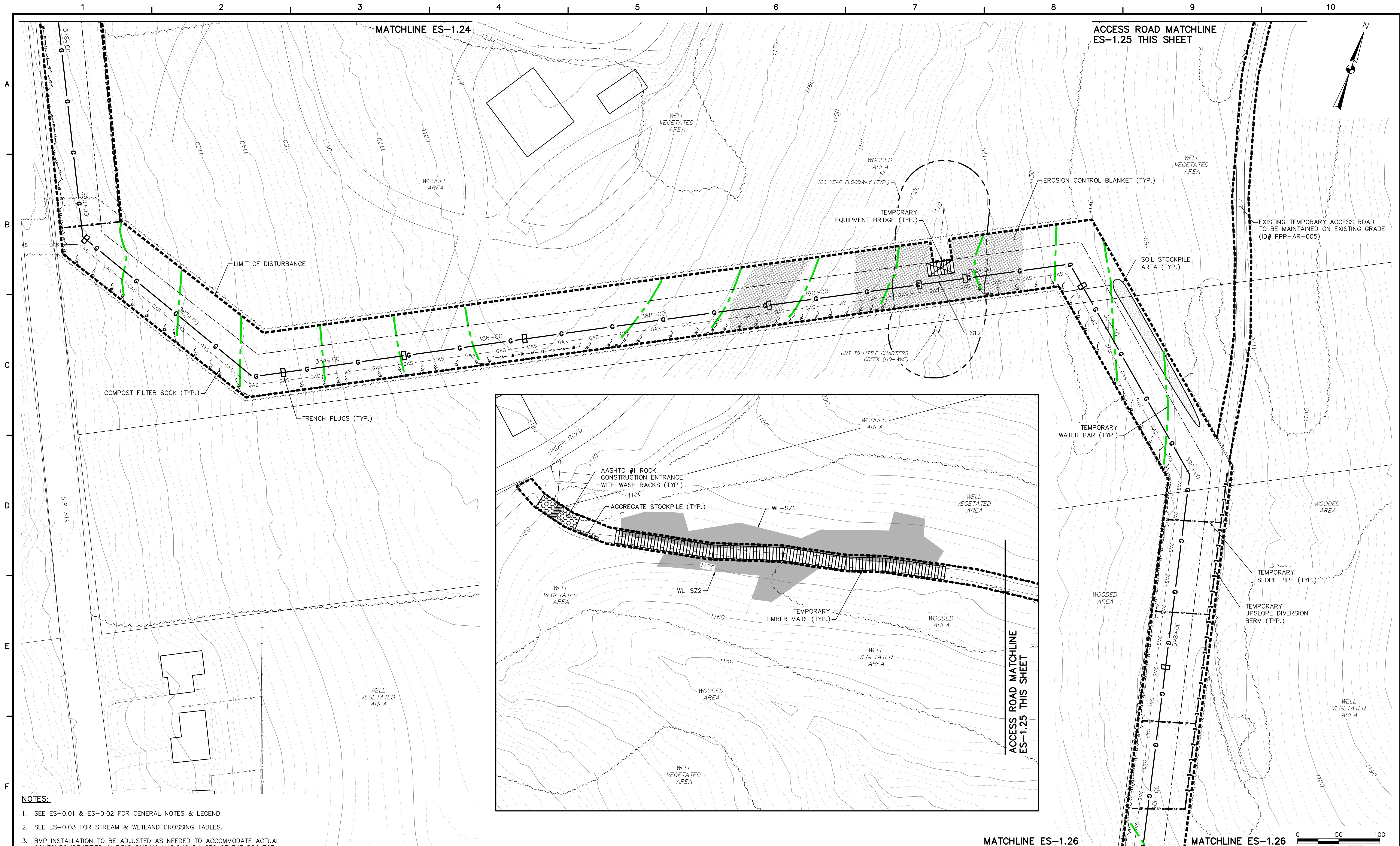
REVISIONS			
NO.	BY	DATE	REMARKS



SUNOCO PIPELINE L.P.  
SINKING SPRING, PENNSYLVANIA  
PENNSYLVANIA PIPELINE PROJECT  
CONSTRUCTION SPREAD 1

1-20" PROPOSED WELDED STEEL NATURAL GAS LIQUIDS PIPELINE  
WASHINGTON COUNTY CONSERVATION DISTRICT  
EROSION & SEDIMENT CONTROL &  
SITE RESTORATION PLAN  
SHEET 2 OF 62

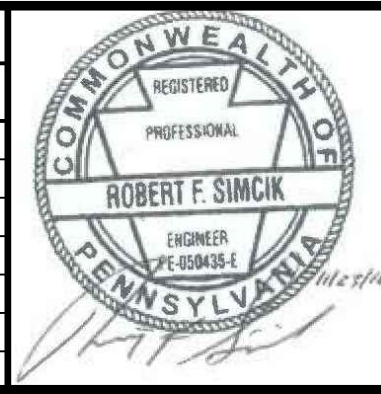
DATE:	NOVEMBER 2016
PROJECT NO.:	112C05958
DESIGNED BY:	JB
DRAWN BY:	BH
CHECKED BY:	RS
COPYRIGHT TETRA TECH INC.	
<b>ES-1.02</b>	
SHEET 1.02 OF 87	



- NOTES:**
1. SEE ES-0.01 & ES-0.02 FOR GENERAL NOTES & LEGEND.
  2. SEE ES-0.03 FOR STREAM & WETLAND CROSSING TABLES.
  3. BMP INSTALLATION TO BE ADJUSTED AS NEEDED TO ACCOMMODATE ACTUAL CONTOURS IDENTIFIED IN FIELD DURING VARIOUS PHASES OF THE PROJECT.

**TETRA TECH**  
 www.tetrattech.com  
 661 ANDERSEN DRIVE - FOSTER PLAZA 7  
 PITTSBURGH, PA 15220  
 T: (412) 921-7090 | F: (412) 921-4040

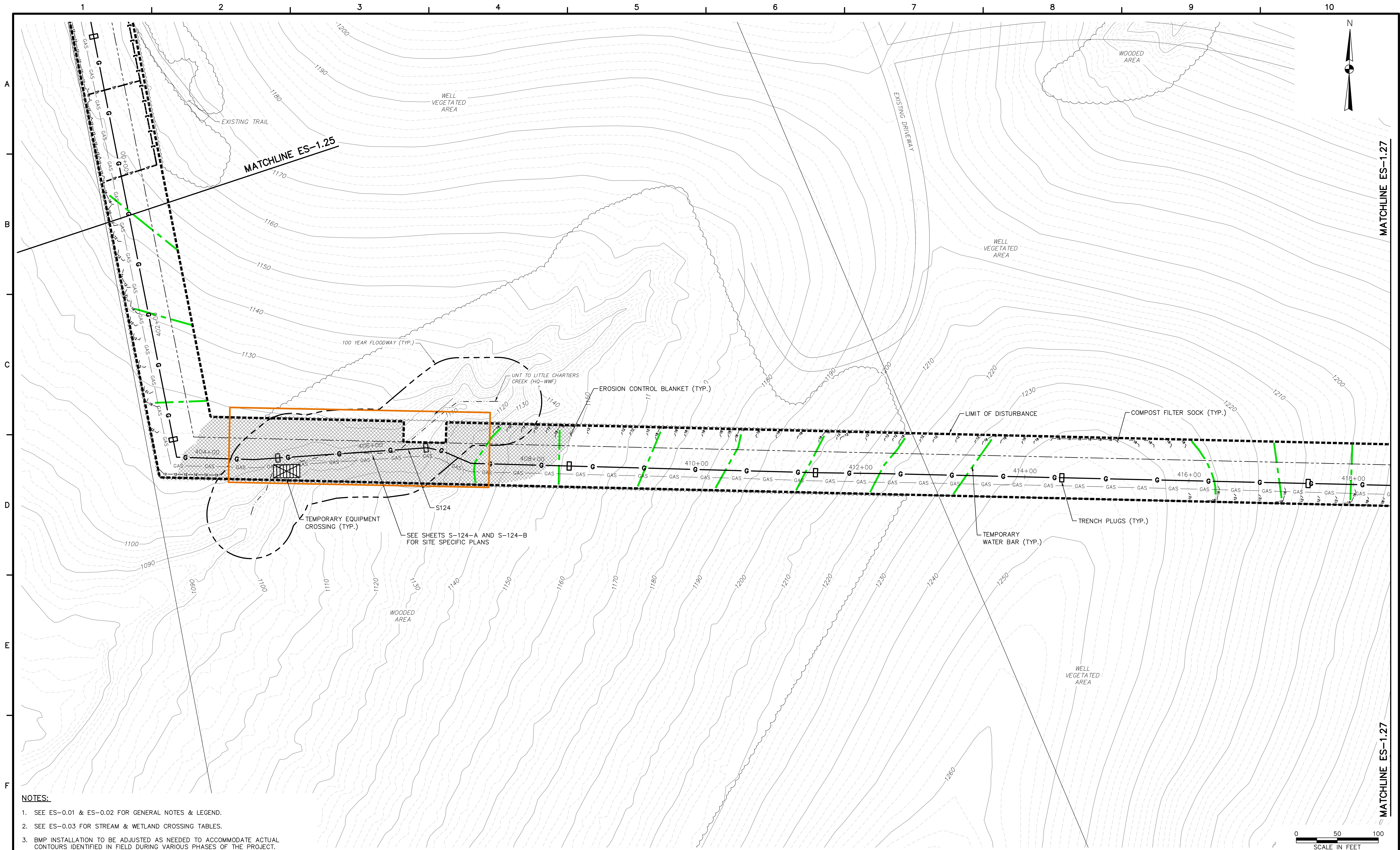
REVISIONS			
NO.	BY	DATE	REMARKS



**SUNOCO PIPELINE L.P.  
 SINKING SPRING, PENNSYLVANIA  
 PENNSYLVANIA PIPELINE PROJECT  
 CONSTRUCTION SPREAD 1**

1-20" PROPOSED WELDED STEEL NATURAL GAS LIQUIDS PIPELINE  
 WASHINGTON COUNTY CONSERVATION DISTRICT  
 EROSION & SEDIMENT CONTROL &  
 SITE RESTORATION PLAN  
 SHEET 25 OF 62

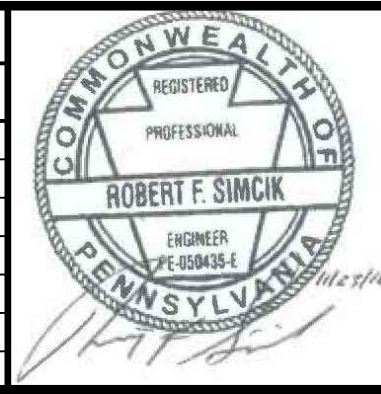
DATE:	NOVEMBER 2016
PROJECT NO.:	112C05958
DESIGNED BY:	JB
DRAWN BY:	BH
CHECKED BY:	RS
COPYRIGHT TETRA TECH INC.	
<b>ES-1.25</b>	
SHEET 1.25 OF 87	



- NOTES:**
- SEE ES-0.01 & ES-0.02 FOR GENERAL NOTES & LEGEND.
  - SEE ES-0.03 FOR STREAM & WETLAND CROSSING TABLES.
  - BMP INSTALLATION TO BE ADJUSTED AS NEEDED TO ACCOMMODATE ACTUAL CONTOURS IDENTIFIED IN FIELD DURING VARIOUS PHASES OF THE PROJECT.

**TETRA TECH**  
www.tetrattech.com  
661 ANDERSEN DRIVE - FOSTER PLAZA 7  
PITTSBURGH, PA 15220  
T: (412) 921-7090 | F: (412) 921-4040

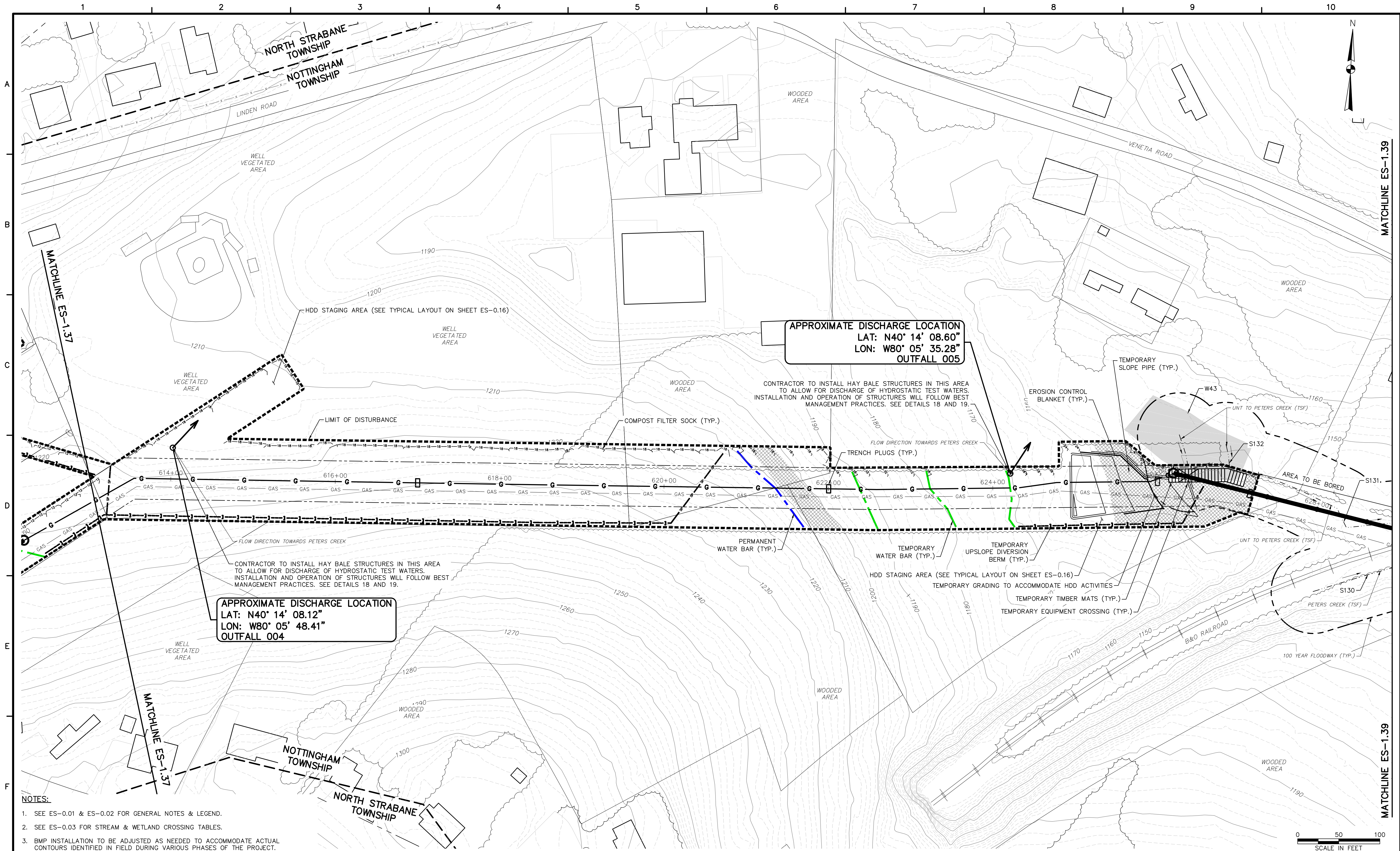
REVISIONS			
NO.	BY	DATE	REMARKS



SUNOCO PIPELINE L.P.  
SINKING SPRING, PENNSYLVANIA  
**PENNSYLVANIA PIPELINE PROJECT  
CONSTRUCTION SPREAD 1**

1-20" PROPOSED WELDED STEEL NATURAL GAS LIQUIDS PIPELINE  
WASHINGTON COUNTY CONSERVATION DISTRICT  
**EROSION & SEDIMENT CONTROL &  
SITE RESTORATION PLAN  
SHEET 26 OF 62**

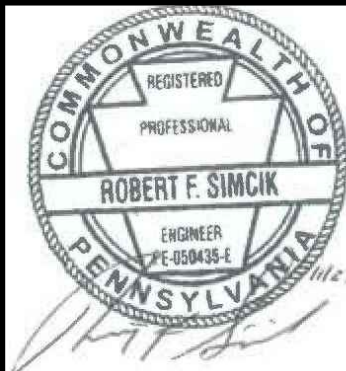
DATE:	NOVEMBER 2016
PROJECT NO.:	112C05958
DESIGNED BY:	JB
DRAWN BY:	BH
CHECKED BY:	RS
COPYRIGHT TETRA TECH INC.	
<b>ES-1.26</b>	
SHEET 1.26 OF 87	



**APPROXIMATE DISCHARGE LOCATION**  
 LAT: N40° 14' 08.12"  
 LON: W80° 05' 48.41"  
 OUTFALL 004

**APPROXIMATE DISCHARGE LOCATION**  
 LAT: N40° 14' 08.60"  
 LON: W80° 05' 35.28"  
 OUTFALL 005

- NOTES:**
1. SEE ES-0.01 & ES-0.02 FOR GENERAL NOTES & LEGEND.
  2. SEE ES-0.03 FOR STREAM & WETLAND CROSSING TABLES.
  3. BMP INSTALLATION TO BE ADJUSTED AS NEEDED TO ACCOMMODATE ACTUAL CONTOURS IDENTIFIED IN FIELD DURING VARIOUS PHASES OF THE PROJECT.



**SUNOCO PIPELINE L.P.**  
 SINKING SPRING, PENNSYLVANIA  
**PENNSYLVANIA PIPELINE PROJECT**  
 CONSTRUCTION SPREAD 1

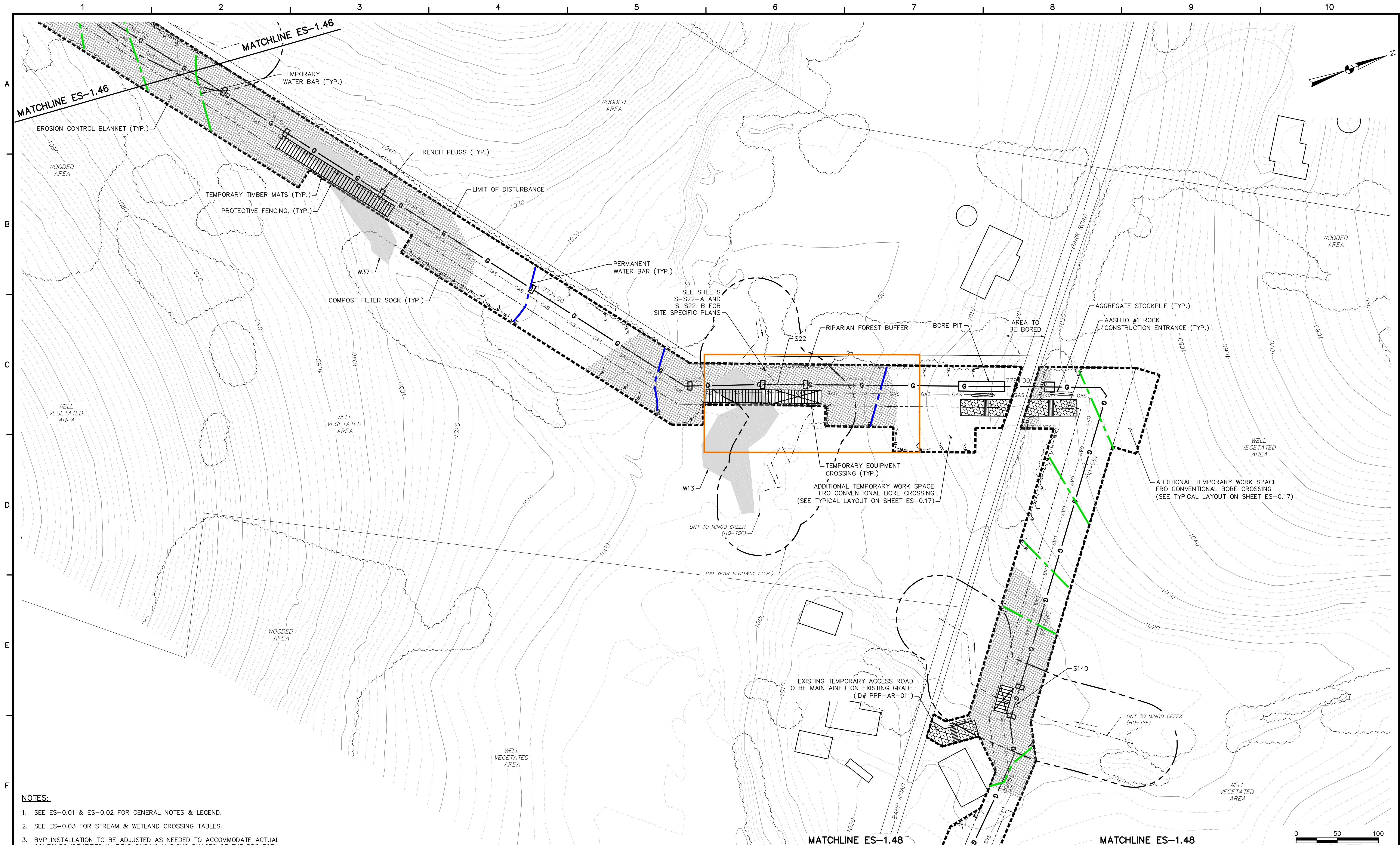
1-20" PROPOSED WELDED STEEL NATURAL GAS LIQUIDS PIPELINE  
 WASHINGTON COUNTY CONSERVATION DISTRICT  
 EROSION & SEDIMENT CONTROL &  
 SITE RESTORATION PLAN  
 SHEET 38 OF 62

DATE:	NOVEMBER 2016
PROJECT NO.:	112C05958
DESIGNED BY:	JB
DRAWN BY:	BH
CHECKED BY:	RS
COPYRIGHT TETRA TECH INC.	
<b>ES-1.38</b>	
SHEET 1.38 OF 87	

**TETRA TECH**  
 www.tetrattech.com  
 661 ANDERSEN DRIVE - FOSTER PLAZA 7  
 PITTSBURGH, PA 15220  
 T: (412) 921-7090 | F: (412) 921-4040

REVISIONS			
NO.	BY	DATE	REMARKS

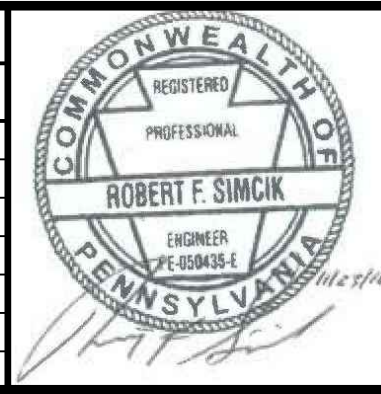




- NOTES:**
1. SEE ES-0.01 & ES-0.02 FOR GENERAL NOTES & LEGEND.
  2. SEE ES-0.03 FOR STREAM & WETLAND CROSSING TABLES.
  3. BMP INSTALLATION TO BE ADJUSTED AS NEEDED TO ACCOMMODATE ACTUAL CONTOURS IDENTIFIED IN FIELD DURING VARIOUS PHASES OF THE PROJECT.

**TETRA TECH**  
www.tetrattech.com  
661 ANDERSEN DRIVE - FOSTER PLAZA 7  
PITTSBURGH, PA 15220  
T: (412) 921-7090 | F: (412) 921-4040

REVISIONS			
NO.	BY	DATE	REMARKS



**SUNOCO PIPELINE L.P.  
SINKING SPRING, PENNSYLVANIA  
PENNSYLVANIA PIPELINE PROJECT  
CONSTRUCTION SPREAD 1**

1-20" PROPOSED WELDED STEEL NATURAL GAS LIQUIDS PIPELINE  
**WASHINGTON COUNTY CONSERVATION DISTRICT  
EROSION & SEDIMENT CONTROL &  
SITE RESTORATION PLAN  
SHEET 47 OF 62**

DATE:	NOVEMBER 2016
PROJECT NO.:	112C05958
DESIGNED BY:	JB
DRAWN BY:	BH
CHECKED BY:	RS
COPYRIGHT TETRA TECH INC.	
<b>ES-1.47</b>	
SHEET 1.47 OF 87	