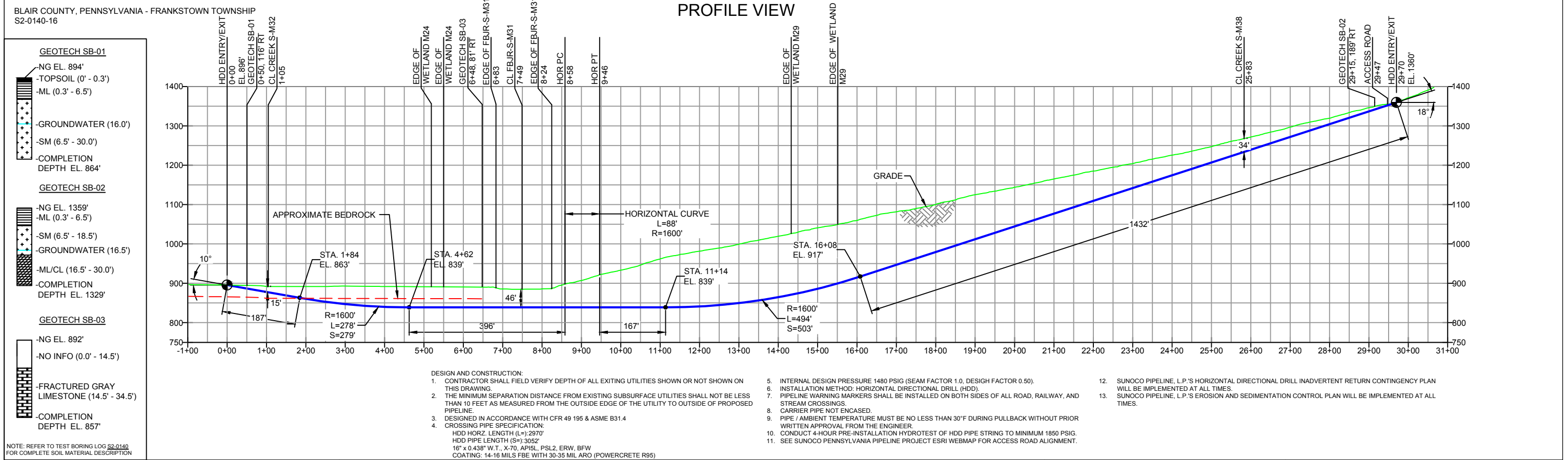


PLAN VIEW



BLAIR COUNTY, PENNSYLVANIA - FRANKSTOWN TOWNSHIP
S2-0140-16

- GEOTECH SB-01**
- NG EL. 894'
 - TOPSOIL (0' - 0.3')
 - ML (0.3' - 6.5')
 - GROUNDWATER (16.0')
 - SM (6.5' - 30.0')
 - COMPLETION DEPTH EL. 864'
- GEOTECH SB-02**
- NG EL. 1359'
 - ML (0.3' - 6.5')
 - SM (6.5' - 18.5')
 - GROUNDWATER (16.5')
 - ML/CL (16.5' - 30.0')
 - COMPLETION DEPTH EL. 1329'
- GEOTECH SB-03**
- NG EL. 892'
 - NO INFO (0.0' - 14.5')
 - FRACTURED GRAY LIMESTONE (14.5' - 34.5')
 - COMPLETION DEPTH EL. 857'

NOTE: REFER TO TEST BORING LOG S2-0140 FOR COMPLETE SOIL MATERIAL DESCRIPTION

NOTES

- ALL COORDINATES SHOWN ARE IN LATITUDE AND LONGITUDE. ALL MSL ELEVATIONS ARE NAD83
- STATIONING IS BASED ON HORIZONTAL DISTANCES.
- ROONEY ENGINEERING, INC. AND SUNOCO PIPELINE, LP ARE NOT RESPONSIBLE FOR LOCATION OF FOREIGN UTILITIES SHOWN IN PLOT PLAN OR PROFILE. THE INFORMATION SHOWN HEREON IS FURNISHED WITHOUT LIABILITY ON THE PART OF ROONEY ENGINEERING, INC. AND SUNOCO PIPELINE, LP. FOR ANY DAMAGES RESULTING FROM ERRORS OR OMISSIONS THEREIN.
- CONTRACTOR IS RESPONSIBLE FOR LOCATING ALL UTILITIES. CONTACT ONE CALL AT 811 PRIOR TO DIGGING.
- SUNOCO EMERGENCY HOTLINE NUMBER IS #1-800-786-7440.

REF. DRAWING

ES-3.51	TO	ES-3.53	EROSION & SEDIMENT PLAN
SHEET 33	TO	SHEET 34	AERIAL SITE PLAN

REVISIONS

NO.	DESCRIPTION	DATE	BY	CHK	APP
EP2	REVISED PER PADEP COMMENTS RECEIVED 09-06-16	10/07/16	DLM	RMB	AAW
EP1	REVISED PER PADEP COMMENTS	05/09/16	MRS	RMB	AAW
EP		11/23/15	MRS	RMB	AAW
B	ADDED GEOTECH INFO	09/04/15	MRS	RMB	AAW
A	ISSUED FOR BID	08/31/15	MRS	RMB	AAW

REVISIONS

NO.	DESCRIPTION	DATE	BY	CHK	APP
EP2	REVISED PER PADEP COMMENTS RECEIVED 09-06-16	10/07/16	DLM	RMB	AAW
EP1	REVISED PER PADEP COMMENTS	05/09/16	MRS	RMB	AAW
EP		11/23/15	MRS	RMB	AAW
B	ADDED GEOTECH INFO	09/04/15	MRS	RMB	AAW
A	ISSUED FOR BID	08/31/15	MRS	RMB	AAW

Sunoco Logistics Partners L.P.

TETRA TECH ROONEY
(303) 792-5911

SUNOCO PIPELINE, L.P.

16-INCH HORIZONTAL DIRECTIONAL DRILL
JUNIATA RIVER
PENNSYLVANIA PIPELINE PROJECT

SCALE: 1"=250'
DWG. NO. PA-BL-0122.0000-WX-16