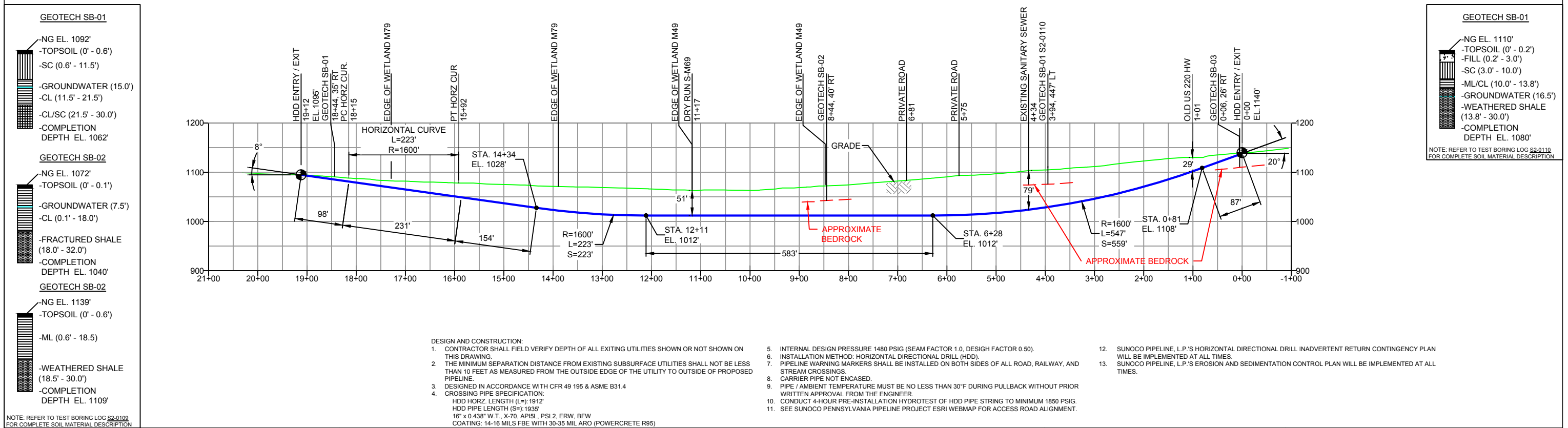


PLAN VIEW

BLAIR COUNTY PENNSYLVANIA, BLAIR TOWNSHIP  
S2-0109-16

PROFILE VIEW



- NOTE: REFER TO TEST BORING LOG S2-0109 FOR COMPLETE SOIL MATERIAL DESCRIPTION
- GEOTECH SB-01**
- NG EL. 1092'
  - TOPSOIL (0' - 0.6')
  - SC (0.6' - 11.5')
  - GROUNDWATER (15.0')
  - CL (11.5' - 21.5')
  - CL/SC (21.5' - 30.0')
  - COMPLETION DEPTH EL. 1062'
- GEOTECH SB-02**
- NG EL. 1072'
  - TOPSOIL (0' - 0.1')
  - GROUNDWATER (7.5')
  - CL (0.1' - 18.0')
  - FRACTURED SHALE (18.0' - 32.0')
  - COMPLETION DEPTH EL. 1040'
- GEOTECH SB-03**
- NG EL. 1139'
  - TOPSOIL (0' - 0.6')
  - ML (0.6' - 18.5')
  - WEATHERED SHALE (18.5' - 30.0')
  - COMPLETION DEPTH EL. 1109'

- NOTES**
- ALL COORDINATES SHOWN ARE IN LATITUDE AND LONGITUDE. ALL MSL ELEVATIONS ARE NAD83
  - STATIONING IS BASED ON HORIZONTAL DISTANCES.
  - ROONEY ENGINEERING, INC. AND SUNOCO PIPELINE, LP ARE NOT RESPONSIBLE FOR LOCATION OF FOREIGN UTILITIES SHOWN IN PLOT PLAN OR PROFILE. THE INFORMATION SHOWN HEREON IS FURNISHED WITHOUT LIABILITY ON THE PART OF ROONEY ENGINEERING, INC. AND SUNOCO PIPELINE, LP. FOR ANY DAMAGES RESULTING FROM ERRORS OR OMISSIONS THEREIN.
  - CONTRACTOR IS RESPONSIBLE FOR LOCATING ALL UTILITIES. CONTACT ONE CALL AT 811 PRIOR TO DIGGING.
  - SUNOCO EMERGENCY HOTLINE NUMBER IS #1-800-786-7440.

**REF. DRAWING**

ES-3.21	TO	ES-3.22	EROSION & SEDIMENT PLAN
SHEET 13	TO	SHEET 14	AERIAL SITE PLAN

**REVISIONS**

EP2	REVISED PER PADEP COMMENTS RECEIVED 09-06-16
EP1	REVISED PER PADEP COMMENTS
EP	
B	ADDED GEOTECH INFO
A	ISSUED FOR BID

BY	DATE	CHK	DATE	APP	DATE
DLM	10/07/16	RMB	10/07/16	AAW	10/07/16
MRS	05/18/16	RMB	05/18/16	AAW	05/18/16
MRS	11/13/15	RMB	11/13/15	AAW	11/13/15
MRS	10/05/15	RMB	10/05/15	AAW	10/05/15
MRS	08/31/15	RMB	08/31/15	AAW	08/31/15

**Sunoco Logistics Partners L.P.**

**TETRA TECH ROONEY**  
(303) 792-5911

**SUNOCO PIPELINE, L.P.**

16-INCH HORIZONTAL DIRECTIONAL DRILL  
OLD US 220 HWY  
PENNSYLVANIA PIPELINE PROJECT

SCALE: 1"=200'  
DWG. NO: PA-BL-0001.0027-RD-16