

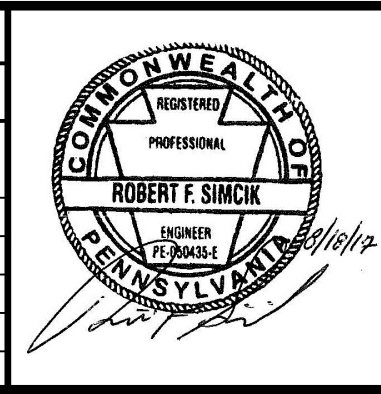
- NOTES:**
- SEE ES-0.01 & ES-0.02 FOR GENERAL NOTES & LEGEND.
  - SEE ES-0.03 FOR STREAM & WETLAND CROSSING TABLES.
  - EROSION & SEDIMENT CONTROL BMP INSTALLATION TO BE ADJUSTED AS NEEDED TO ACCOMMODATE ACTUAL CONTOURS IDENTIFIED IN FIELD DURING VARIOUS PHASES OF THE PROJECT.
  - AREA IN RED IDENTIFIES CHANGES MADE TO CONVERT LONG HDD (APPROX. 5,000 FT.) TO AN OPEN CUT INSTALLATION WITH A SHORTER HDD (APPROX. 950 FT.) FOR CROSSING OF SR 30 AND STREAM S-B79 AND CONVENTIONAL BORES FOR ROADS AND RESOURCE AREAS WITH PREVIOUS HDD AS IDENTIFIED ON PLAN.

**LEGEND:**

	LAWN COVER
	MEADOW COVER

**TETRA TECH**  
www.tetrattech.com  
661 ANDERSEN DRIVE - FOSTER PLAZA 7  
PITTSBURGH, PA 15220  
T: (412) 921-7090 | F: (412) 921-4040

NO.		BY	DATE	REVISIONS	REMARKS
1	RS	3/28/17		INCORPORATED THE SPECIAL CONDITIONS SET FORTH IN DEP'S CHAPTER 102 AND CHAPTER 105 PERMITS	
2	RS	5/25/17		DRAWINGS PROVIDED TO FIELD	
3	RS	5/26/17		HDD TO OPEN CUT-MAJOR MODIFICATION I-STA 15106+00 TO STA 15159+00	
4	RS	8/18/17		HDD TO OPEN CUT-MAJOR MODIFICATION II-STA 15084+00 TO STA 15102+00	
5	RS	2/20/18		MODIFICATION 1 UPDATES	
6	RS	5/25/18		RESTORATION SHADING	

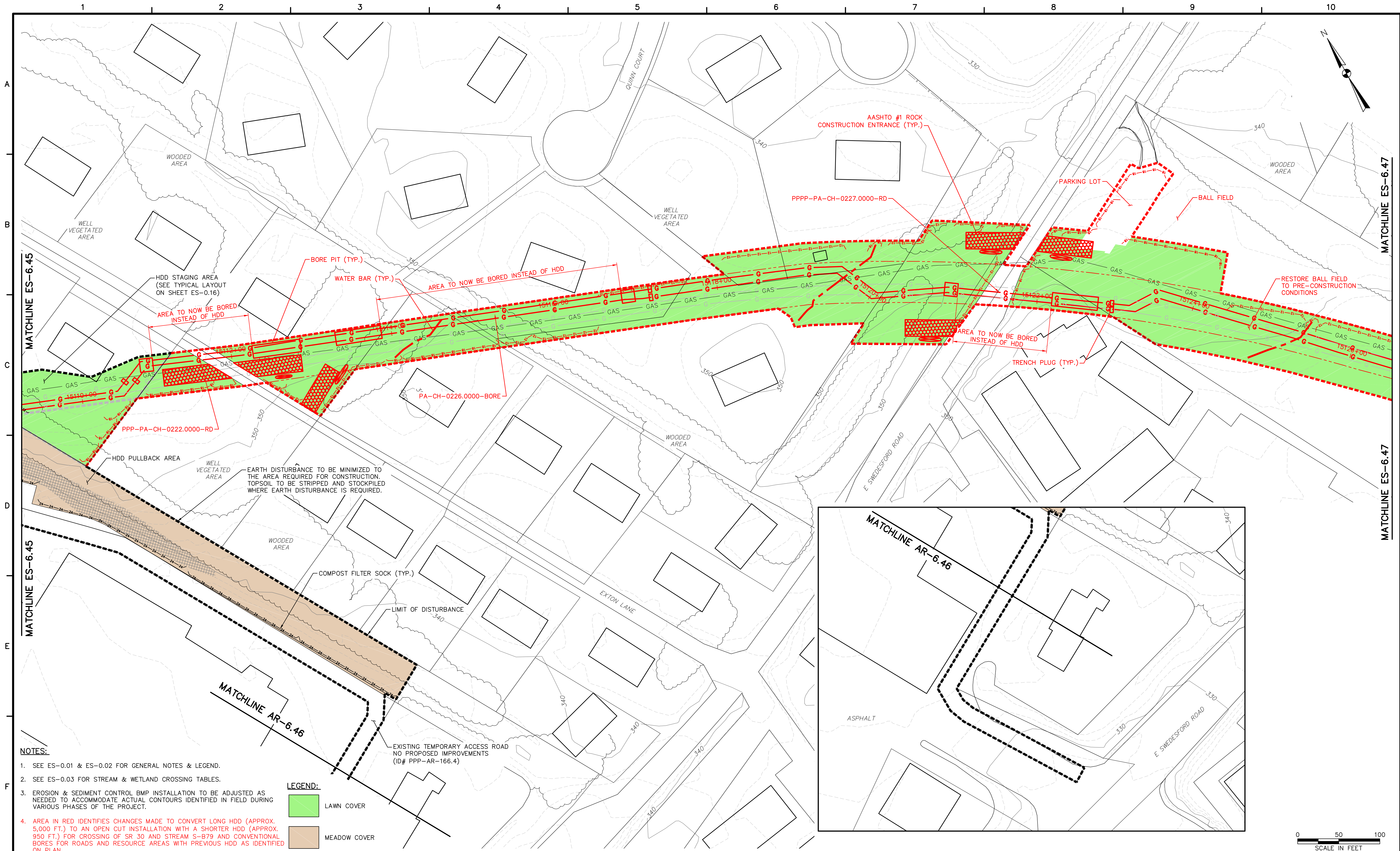


SUNOCO PIPELINE L.P.  
SINKING SPRING, PENNSYLVANIA  
**PENNSYLVANIA PIPELINE PROJECT  
CONSTRUCTION SPREAD 6**

1-20" & 1-16" WELDED STEEL NATURAL GAS PIPELINES  
CHESTER COUNTY CONSERVATION DISTRICT  
**EROSION & SEDIMENT CONTROL &  
SITE RESTORATION PLAN  
SHEET 45 OF 74**

DATE:	2/6/17
PROJECT NO.:	112C05958
DESIGNED BY:	JB
DRAWN BY:	BH
CHECKED BY:	RS
COPYRIGHT TETRA TECH INC.	
<b>ES-6.45</b>	
SHEET 6.45 OF 99	





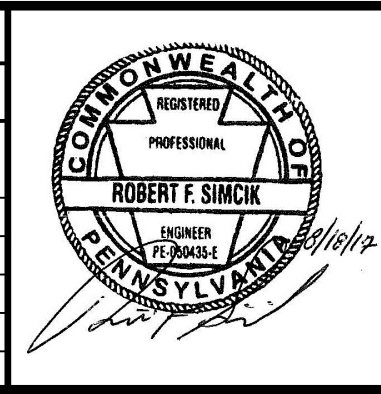
- NOTES:**
1. SEE ES-0.01 & ES-0.02 FOR GENERAL NOTES & LEGEND.
  2. SEE ES-0.03 FOR STREAM & WETLAND CROSSING TABLES.
  3. EROSION & SEDIMENT CONTROL BMP INSTALLATION TO BE ADJUSTED AS NEEDED TO ACCOMMODATE ACTUAL CONTOURS IDENTIFIED IN FIELD DURING VARIOUS PHASES OF THE PROJECT.
  4. AREA IN RED IDENTIFIES CHANGES MADE TO CONVERT LONG HDD (APPROX. 5,000 FT.) TO AN OPEN CUT INSTALLATION WITH A SHORTER HDD (APPROX. 950 FT.) FOR CROSSING OF SR 30 AND STREAM S-B79 AND CONVENTIONAL BORES FOR ROADS AND RESOURCE AREAS WITH PREVIOUS HDD AS IDENTIFIED ON PLAN.

**LEGEND:**

	LAWN COVER
	MEADOW COVER

**TETRA TECH**  
www.tetrattech.com  
661 ANDERSEN DRIVE - FOSTER PLAZA 7  
PITTSBURGH, PA 15220  
T: (412) 921-7090 | F: (412) 921-4040

REVISIONS				
NO.	BY	DATE	REMARKS	
1	RS	3/28/17	INCORPORATED THE SPECIAL CONDITIONS SET FORTH IN DEP'S CHAPTER 102 AND CHAPTER 105 PERMITS	
2	RS	5/25/17	DRAWINGS PROVIDED TO FIELD	
3	RS	8/18/17	CONVERT HDD TO OPEN CUT	
4	RS	2/20/18	MODIFICATION 1 UPDATES	
5	RS	5/25/18	RESTORATION SHADING	

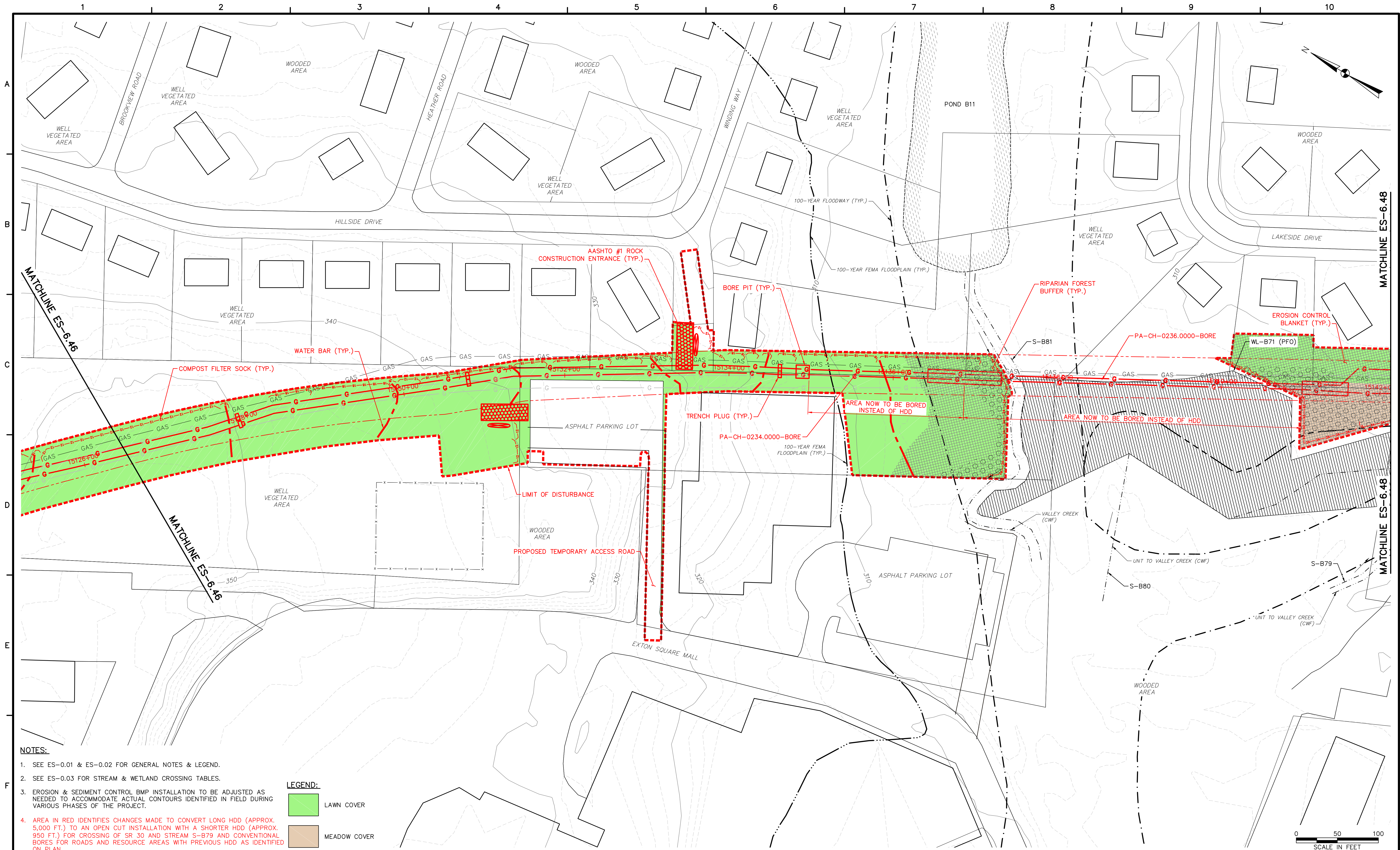


SUNOCO PIPELINE L.P.  
SINKING SPRING, PENNSYLVANIA  
**PENNSYLVANIA PIPELINE PROJECT  
CONSTRUCTION SPREAD 6**

1-20" & 1-16" WELDED STEEL NATURAL GAS PIPELINES  
CHESTER COUNTY CONSERVATION DISTRICT  
EROSION & SEDIMENT CONTROL &  
SITE RESTORATION PLAN  
SHEET 46 OF 74

DATE:	2/6/17
PROJECT NO.:	112C05958
DESIGNED BY:	JB
DRAWN BY:	BH
CHECKED BY:	RS
COPYRIGHT TETRA TECH INC.	
<b>ES-6.46</b>	
SHEET 6.46 OF 99	





**NOTES:**

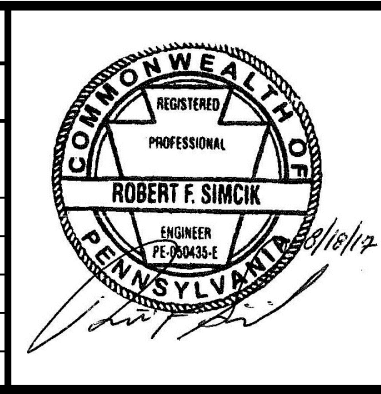
1. SEE ES-0.01 & ES-0.02 FOR GENERAL NOTES & LEGEND.
2. SEE ES-0.03 FOR STREAM & WETLAND CROSSING TABLES.
3. EROSION & SEDIMENT CONTROL BMP INSTALLATION TO BE ADJUSTED AS NEEDED TO ACCOMMODATE ACTUAL CONTOURS IDENTIFIED IN FIELD DURING VARIOUS PHASES OF THE PROJECT.
4. AREA IN RED IDENTIFIES CHANGES MADE TO CONVERT LONG HDD (APPROX. 5,000 FT.) TO AN OPEN CUT INSTALLATION WITH A SHORTER HDD (APPROX. 950 FT.) FOR CROSSING OF SR 30 AND STREAM S-B79 AND CONVENTIONAL BORES FOR ROADS AND RESOURCE AREAS WITH PREVIOUS HDD AS IDENTIFIED ON PLAN.

**LEGEND:**

- LAWN COVER
- MEADOW COVER

**TETRA TECH**  
www.tetrattech.com  
661 ANDERSEN DRIVE - FOSTER PLAZA 7  
PITTSBURGH, PA 15220  
T: (412) 921-7090 | F: (412) 921-4040

NO.		BY	DATE	REVISIONS	REMARKS
1	RS	3/28/17		INCORPORATED THE SPECIAL CONDITIONS SET FORTH IN DEP'S CHAPTER 102 AND CHAPTER 105 PERMITS	
2	RS	5/25/17		DRAWINGS PROVIDED TO FIELD	
3	RS	8/18/17		CONVERT HDD TO OPEN CUT	
4	RS	2/20/18		MODIFICATION 1 UPDATES	
5	RS	5/25/18		RESTORATION SHADING	



**SUNOCO PIPELINE L.P.**  
SINKING SPRING, PENNSYLVANIA  
**PENNSYLVANIA PIPELINE PROJECT**  
CONSTRUCTION SPREAD 6

1-20" & 1-16" WELDED STEEL NATURAL GAS PIPELINES  
**CHESTER COUNTY CONSERVATION DISTRICT**  
EROSION & SEDIMENT CONTROL &  
SITE RESTORATION PLAN  
SHEET 47 OF 82

DATE:	2/6/17
PROJECT NO.:	112C05958
DESIGNED BY:	JB
DRAWN BY:	BH
CHECKED BY:	RS
COPYRIGHT TETRA TECH INC.	
<b>ES-6.47</b>	
SHEET 6.47 OF 99	







