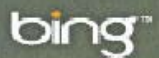
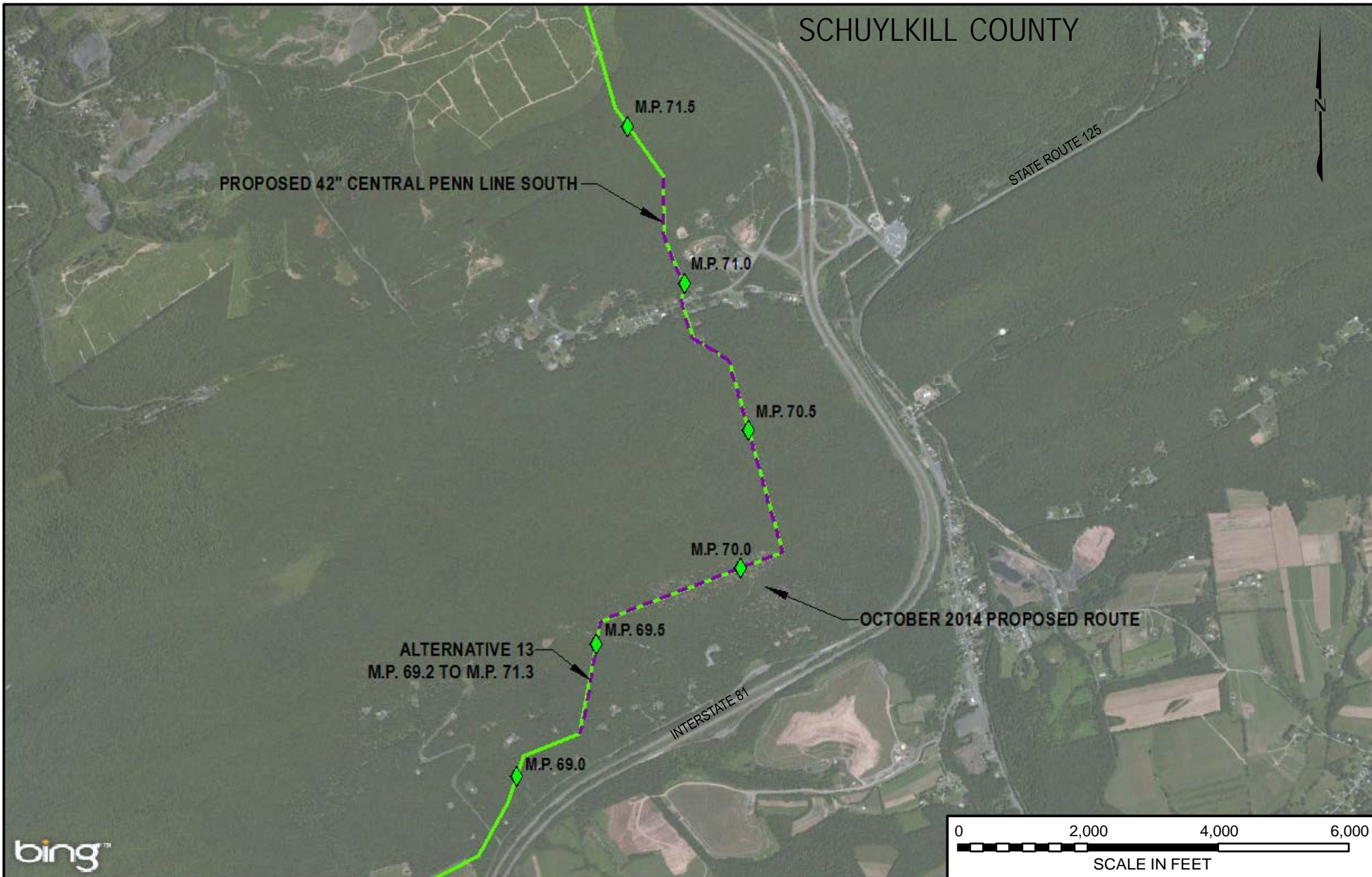


# SCHUYLKILL COUNTY



**LEGEND**

- PROPOSED 42" CENTRAL PENN LINE SOUTH
- CPL SOUTH ALTERNATIVE 13
- OCTOBER 2014 PROPOSED ROUTE

**WOOD GROUP  
MUSTANG, INC.**

DRAWING NO.		REFERENCE TITLE	
		<b>FIGURE 10D-17</b>	
NO.	DATE	BY	REVISION DESCRIPTION
0	3/31/15	JTN	ISSUED FOR FRECFILING
			W.O. NO. 1161503    CHK. DP    APP. MJH

**TRANSCONTINENTAL GAS PIPE LINE COMPANY LLC**  
**CPL SOUTH ALTERNATIVE 13**  
**ATLANTIC SUNRISE PROJECT**  
**PROPOSED 42" CENTRAL PENN LINE SOUTH**  
**M.P. 69.23 TO M.P. 71.32**  
**SCHUYLKILL COUNTY, PENNSYLVANIA**

DRAWN BY: <b>JTN</b>	DATE: <b>3/10/15</b>	ISSUE FOR BID:	SCALE: <b>1" = 2000'</b>
CHECKED BY: <b>DP</b>	DATE: <b>3/10/15</b>	ISSUE FOR CONSTRUCTION:	REVISION: <b>0</b>
APPROVED BY: <b>MJH</b>	DATE: <b>3/10/15</b>	DRAWING NUMBER: <b>F-AP-CPLS-A-72</b>	
WO: <b>1161503</b>		3:42 PM 3/23/2015	