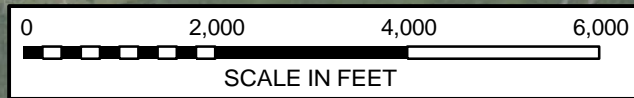
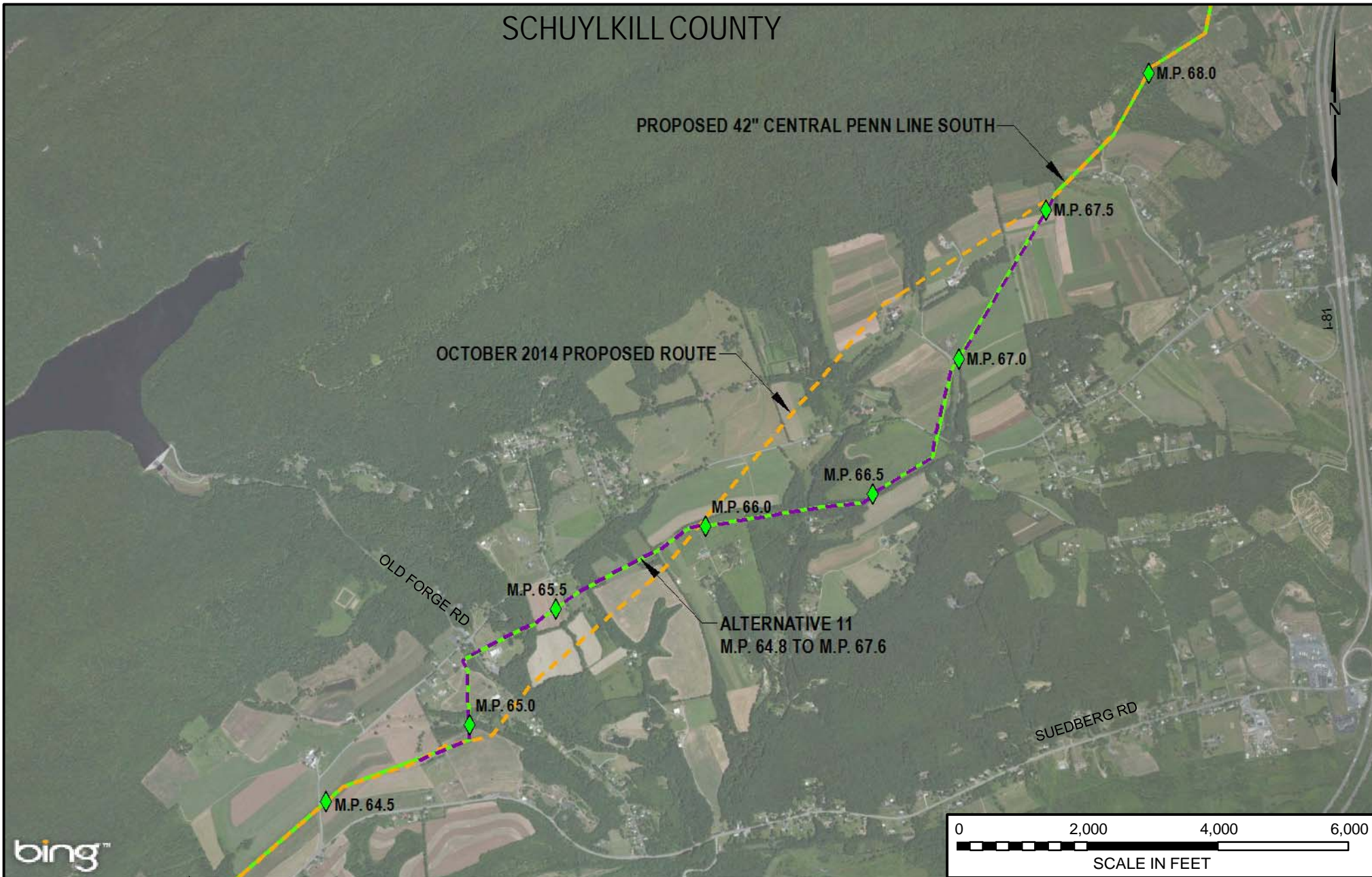



SCHUYLKILL COUNTY



LEGEND

- PROPOSED 42" CENTRAL PENN LINE SOUTH
- CPL SOUTH ALTERNATIVE 11
- - - OCTOBER 2014 PROPOSED ROUTE




**WOOD GROUP
MUSTANG, INC.**

DRAWING NO.		REFERENCE TITLE				
		FIGURE 10D-15				
NO.	DATE	BY	REVISION DESCRIPTION	W.O. NO.	CHK.	APP.
0	3/31/15	JTN	ISSUED FOR FERC FILING	1161503	DP	MJH

TRANSCONTINENTAL GAS PIPE LINE COMPANY LLC
CPL SOUTH ALTERNATIVE 11
ATLANTIC SUNRISE PROJECT

PROPOSED 42" CENTRAL PENN LINE SOUTH
M.P. 64.80 TO M.P. 67.55
SCHUYLKILL COUNTY, PENNSYLVANIA



DRAWN BY: JTN	DATE: 3/10/15	ISSUE FOR BID:	SCALE: 1" = 2000'
CHECKED BY: DP	DATE: 3/10/15	ISSUE FOR CONSTRUCTION:	REVISION: 0
APPROVED BY: MJH	DATE: 3/10/15	DRAWING NUMBER:	F-AP-CPLS-A-70
WO: 1161503		3:29 PM 3/23/2015	