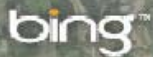
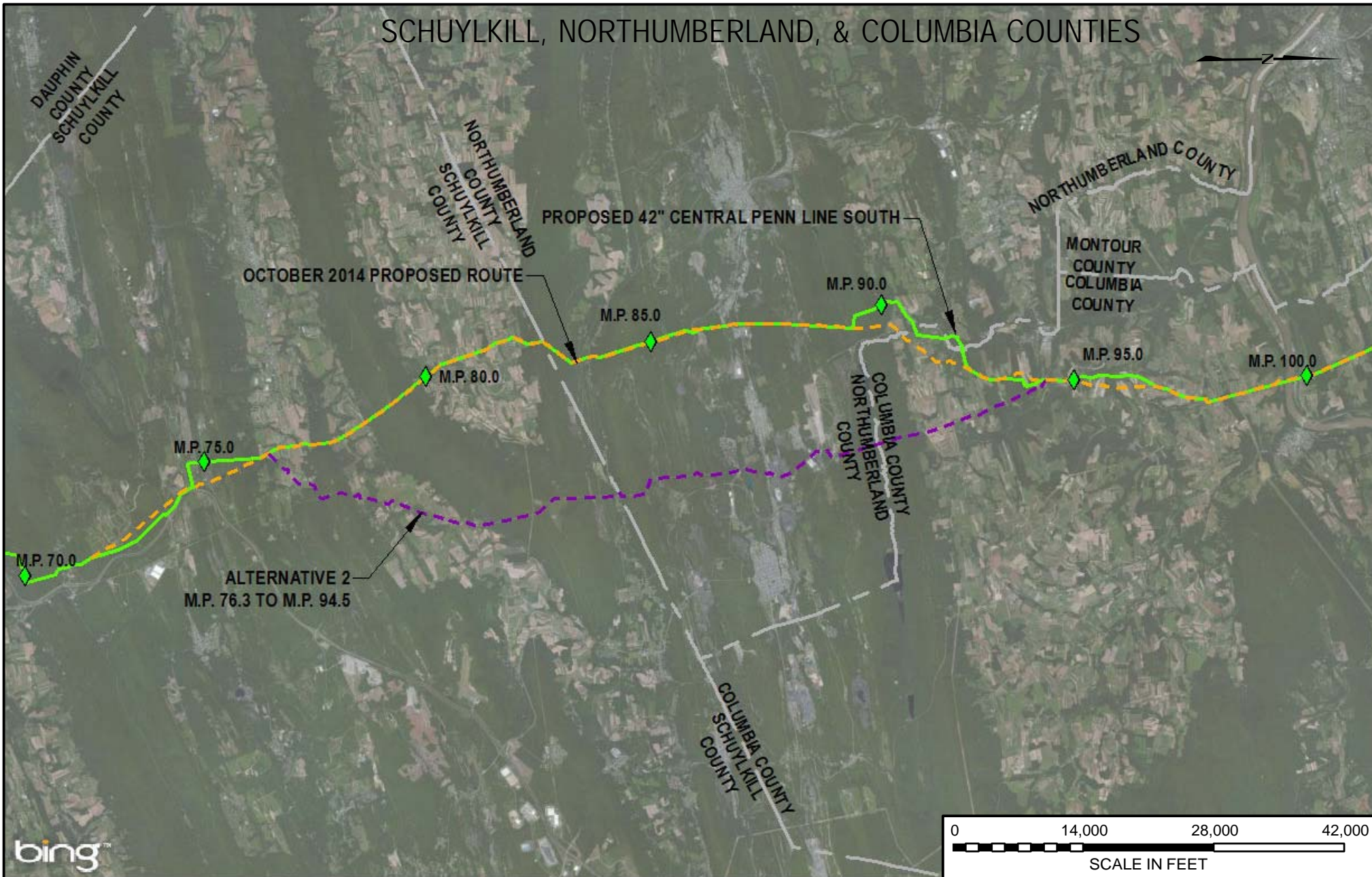


# SCHUYLKILL, NORTHUMBERLAND, & COLUMBIA COUNTIES



LEGEND	
	PROPOSED 42" CENTRAL PENN LINE SOUTH
	CPL SOUTH ALTERNATIVE 2
	OCTOBER 2014 PROPOSED ROUTE
	COUNTY BOUNDARY



DRAWING NO.		REFERENCE TITLE				
		<b>FIGURE 10D-6</b>				
NO.	DATE	BY	REVISION DESCRIPTION	W.O. NO.	CHK.	APP.
0	3/31/15	JTN	ISSUED FOR FERCFILING	1161503	DP	MJH

TRANSCONTINENTAL GAS PIPE LINE COMPANY LLC CPL SOUTH ALTERNATIVE 2 ATLANTIC SUNRISE PROJECT PROPOSED 42" CENTRAL PENN LINE SOUTH M.P. 76.33 TO M.P. 94.45 SCHUYLKILL, NORTHUMBERLAND, & COLUMBIA COUNTIES, PENNSYLVANIA						
DRAWN BY:	JTN	DATE:	3/10/15			
CHECKED BY:	DP	DATE:	3/10/15			
APPROVED BY:	MJH	DATE:	3/10/15			
WO:	1161503	ISSUE FOR CONSTRUCTION:		DRAWING NUMBER:	<b>F-AP-CPLS-A-61</b>	
			SCALE:	1" = 14000'	REVISION:	0
			3:44 PM 3/23/2015			