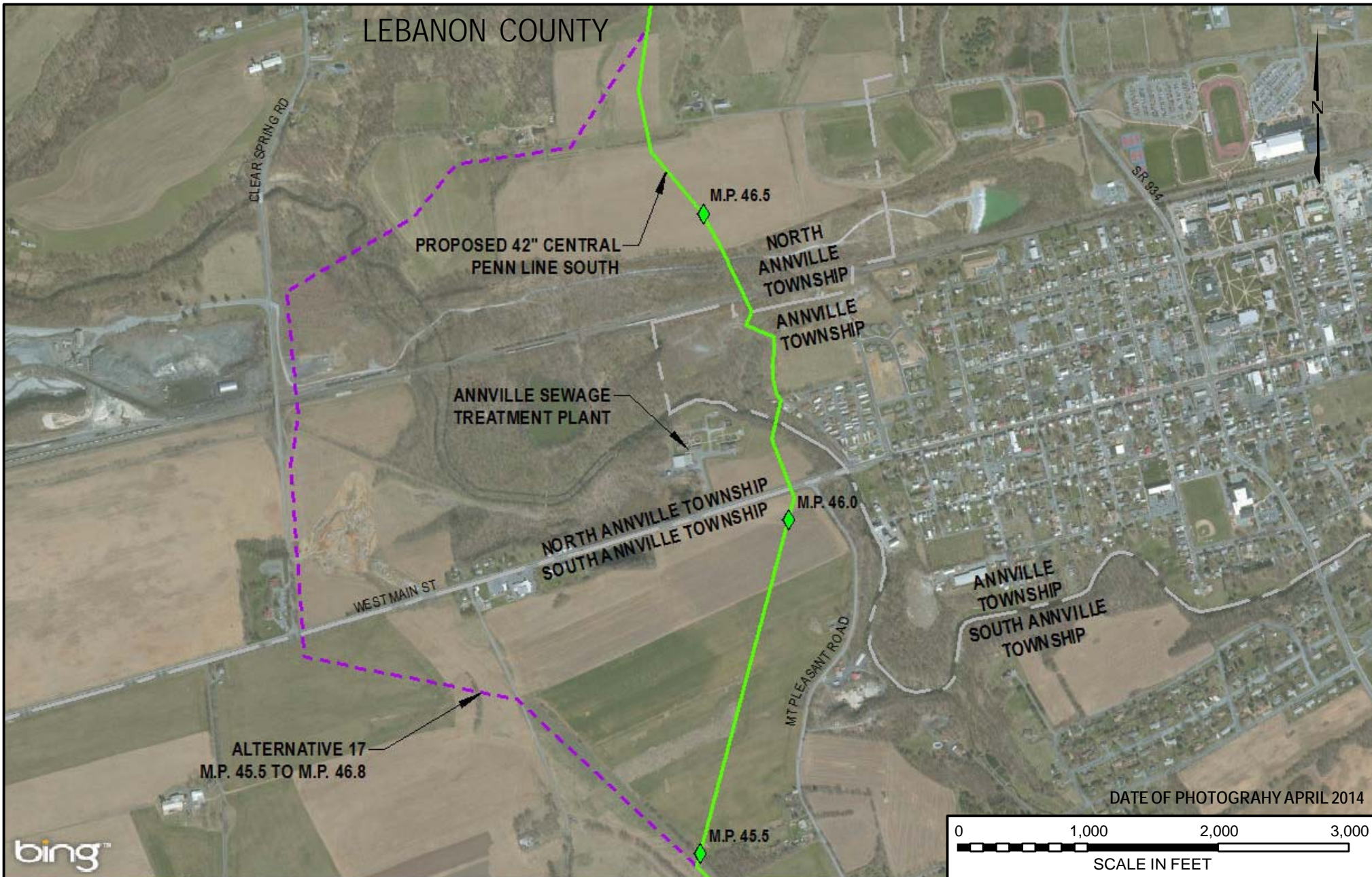


LEBANON COUNTY



DATE OF PHOTOGRAPHY APRIL 2014



- LEGEND**
- PROPOSED 42" CENTRAL PENN LINE SOUTH
  - - - CPL SOUTH ALTERNATIVE 17
  - - - TOWNSHIP BOUNDARY



|             |  |                     |  |
|-------------|--|---------------------|--|
| DRAWING NO. |  | REFERENCE TITLE     |  |
|             |  | <b>FIGURE 10F-2</b> |  |

**TRANSCONTINENTAL GAS PIPE LINE COMPANY LLC**  
**CPL SOUTH ALTERNATIVE 17**  
**ATLANTIC SUNRISE PROJECT**  
**PROPOSED 42" CENTRAL PENN LINE SOUTH**  
**M.P. 45.48 TO M.P. 46.80**  
**LEBANON COUNTY, PENNSYLVANIA**



|     |         |     |                        |          |      |      |              |         |                         |                       |
|-----|---------|-----|------------------------|----------|------|------|--------------|---------|-------------------------|-----------------------|
| NO. | DATE    | BY  | REVISION DESCRIPTION   | W.O. NO. | CHK. | APP. | DRAWN BY:    | DATE:   | ISSUE FOR BID:          | SCALE:                |
| 0   | 3/31/15 | JTN | ISSUED FOR FERC FILING | 1161503  | DP   | MJH  | JTN          | 3/10/15 | ISSUE FOR CONSTRUCTION: | 1" = 1000'            |
|     |         |     |                        |          |      |      | CHECKED BY:  | DATE:   | ISSUE FOR CONSTRUCTION: | REVISION:             |
|     |         |     |                        |          |      |      | APPROVED BY: | DATE:   | DRAWING NUMBER:         | 0                     |
|     |         |     |                        |          |      |      | WO:          | 1161503 | 6:20 PM 3/23/2015       | <b>F-AP-CPLS-A-76</b> |