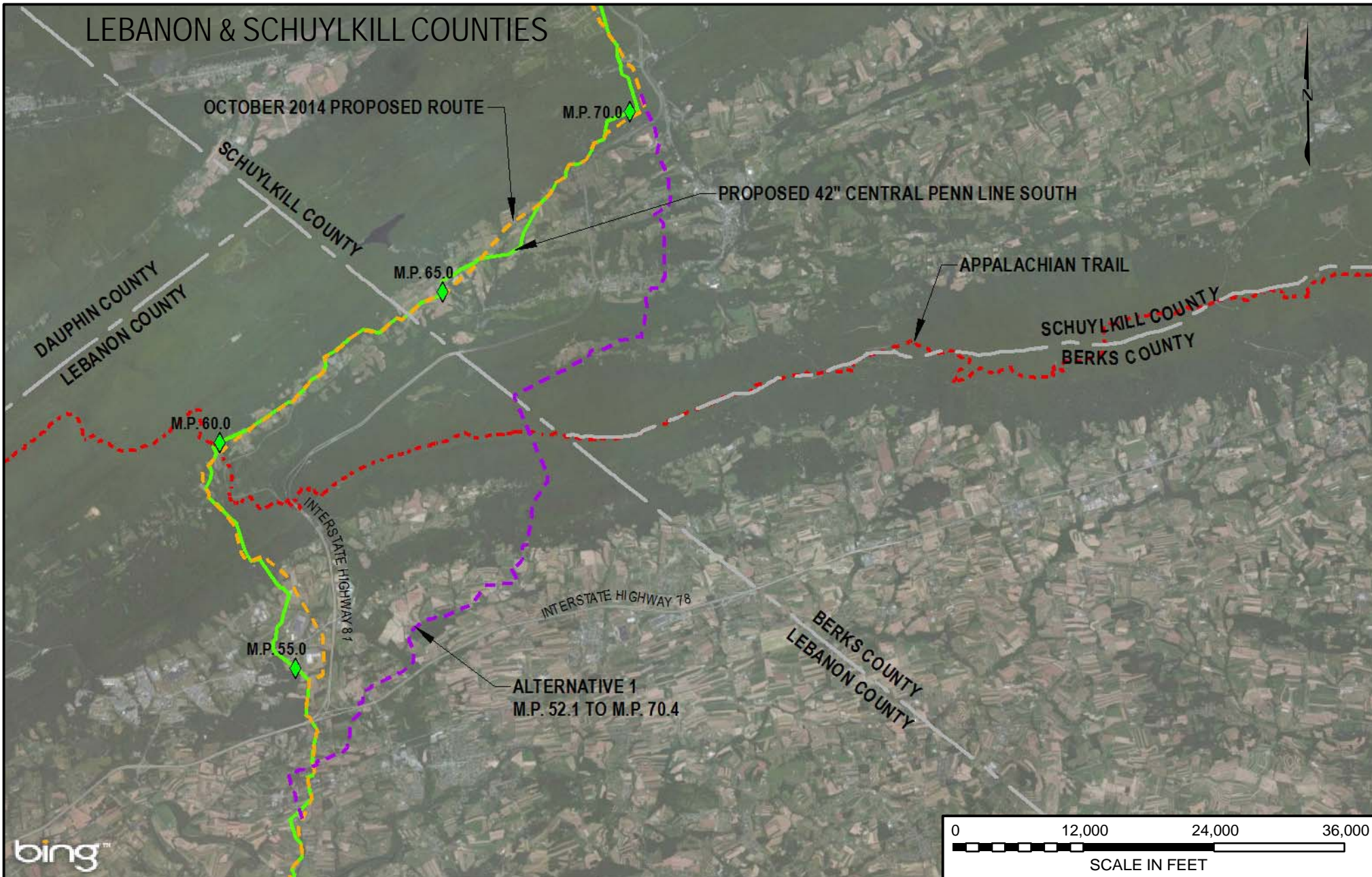


# LEBANON & SCHUYLKILL COUNTIES



LEGEND	
	PROPOSED 42" CENTRAL PENN LINE SOUTH
	CPL SOUTH ALTERNATIVE 1
	OCTOBER 2014 PROPOSED ROUTE
	APPALACHIAN TRAIL
	COUNTY BOUNDARY



DRAWING NO.	REFERENCE TITLE
	<b>FIGURE 10D-5</b>

TRANSCONTINENTAL GAS PIPE LINE COMPANY LLC  
 CPL SOUTH ALTERNATIVE 1  
 ATLANTIC SUNRISE PROJECT  
 PROPOSED 42" CENTRAL PENN LINE SOUTH  
 M.P. 52.10 TO M.P. 70.40  
 LEBANON & SCHUYLKILL COUNTIES, PENNSYLVANIA



NO.	DATE	BY	REVISION DESCRIPTION	W.O. NO.	CHK.	APP.	DRAWN BY:	DATE:	ISSUE FOR BID:	SCALE:
0	3/31/15	JTN	ISSUED FOR FERC FILING	1161503	DP	MJH	JTN	3/10/15	ISSUE FOR CONSTRUCTION:	1" = 12000'
							DP	3/10/15		REVISION: 0
							MJH	3/10/15	DRAWING NUMBER:	
							WO: 1161503		F-AP-CPLS-A-60	
									3:03 PM 3/23/2015	