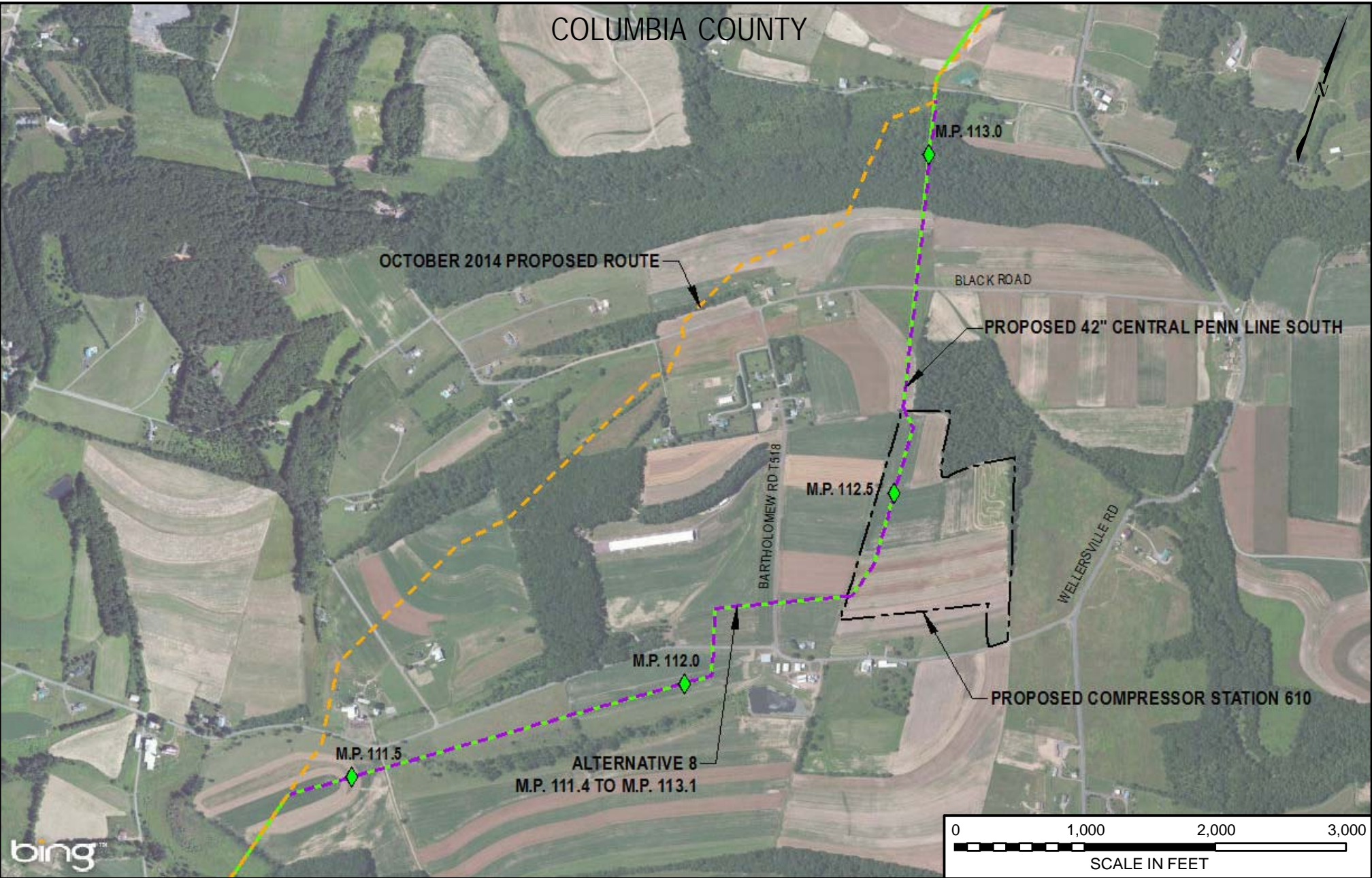


COLUMBIA COUNTY




LEGEND	
	PROPOSED 42" CENTRAL PENN LINE SOUTH
	CPL SOUTH ALTERNATIVE 8
	OCTOBER 2014 PROPOSED ROUTE
	TEMPORARY WORK SPACE



DRAWING NO.	REFERENCE TITLE
	FIGURE 10D-12

TRANSCONTINENTAL GAS PIPE LINE COMPANY LLC
 CPL SOUTH ALTERNATIVE 8
 ATLANTIC SUNRISE PROJECT
 PROPOSED 42" CENTRAL PENN LINE SOUTH
 M.P. 111.40 TO M.P. 113.10
 COLUMBIA COUNTY, PENNSYLVANIA



NO.	DATE	BY	REVISION DESCRIPTION	W.O. NO.	CHK.	APP.	DRAWN BY:	DATE:	ISSUE FOR BID:	SCALE:
0	3/31/15	JTN	ISSUED FOR FERC FILING	1161503	DP	MJH	JTN	3/10/15	ISSUE FOR CONSTRUCTION:	1" = 1000'
							DP	3/10/15	DRAWING NUMBER:	REVISION: 0
							MJH	3/10/15	F-AP-CPLS-A-67	
							WO: 1161503			6:47 AM 3/23/2015