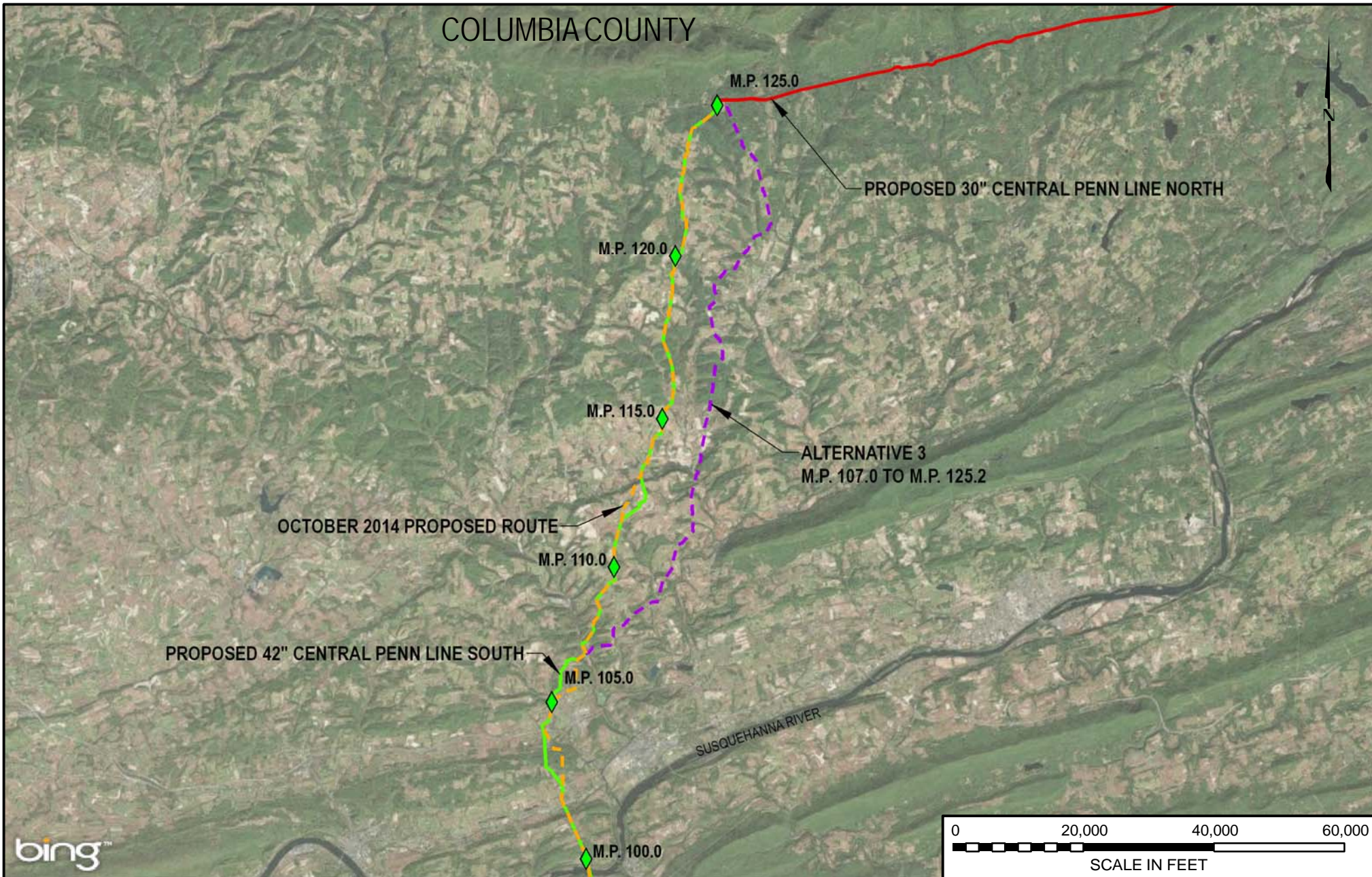


COLUMBIA COUNTY



- LEGEND**
- PROPOSED 42" CENTRAL PENN LINE SOUTH
 - PROPOSED 30" CENTRAL PENN LINE NORTH
 - - - CPL SOUTH ALTERNATIVE 3
 - - - OCTOBER 2014 PROPOSED ROUTE



DRAWING NO.		REFERENCE TITLE	
		FIGURE 10D-7	

TRANSCONTINENTAL GAS PIPE LINE COMPANY LLC
CPL SOUTH ALTERNATIVE 3
ATLANTIC SUNRISE PROJECT
PROPOSED 42" CENTRAL PENN LINE SOUTH
M.P. 106.96 TO M.P. 125.15 COLUMBIA
COUNTY, PENNSYLVANIA

NO.	DATE	BY	REVISION DESCRIPTION	WO NO	CHK	APP	DRAWN BY:	DATE:	ISSUE FOR BID:	SCALE:
0	3/31/15	JTN	ISSUED FOR FERC FILING	1161503	DP	MJH	JTN	3/10/15	ISSUE FOR CONSTRUCTION:	1" = 20000'
							DP	3/10/15		REVISION: 0
							MJH	3/10/15	DRAWING NUMBER:	
							1161503		F-AP-CPLS-A-62	
									7:53 PM 3/23/2015	