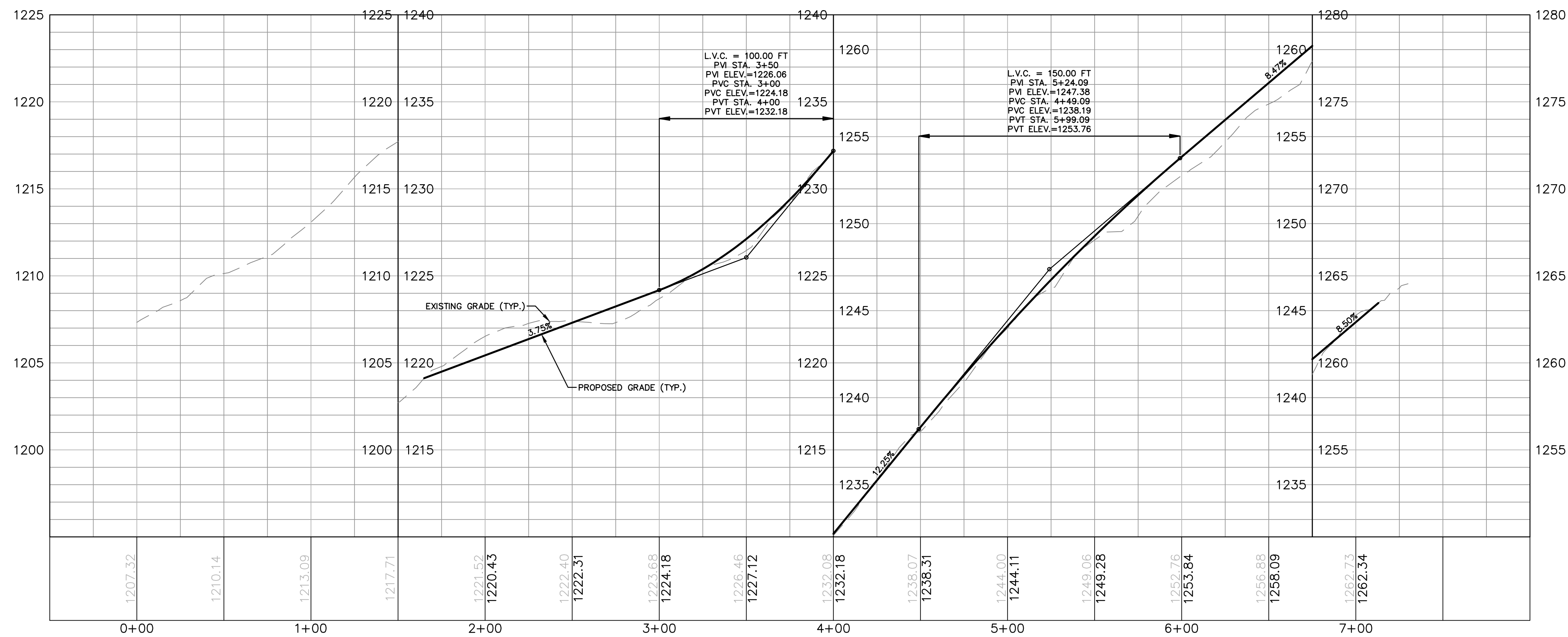


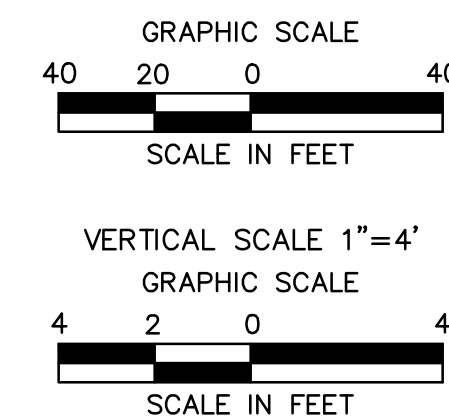
ACCESS ROAD LAYOUT

AR-SC-067.2						
No.	Northing	Easting	Bearing	Delta (Δ)	Length	Tangent
L1	B 471342.45 E 471230.26	B 2332186.81 E 2332040.49	S52°31'14.40"W		184.38'	
C1	PC 471230.26 PI 471211.63 PT 471209.79	PC 2332040.49 PI 2332016.19 PT 2331985.63		34°02'43"	59.42'	30.62' 100.0'
L2	B 471209.79 E 471209.48	B 2331985.63 E 2331980.43	S86°33'56.93"W		5.22'	
C2	PC 471209.48 PI 471208.01 PT 471195.40	PC 2331980.43 PI 2331955.96 PT 2331934.94		27°32'42"	48.07'	24.51' 100.0'
L3	B 471195.40 E 471151.04	B 2331934.94 E 2331861.07	S59°01'15.39"W		86.17'	
C3	PC 471151.04 PI 471140.83 PT 471128.48	PC 2331861.07 PI 2331844.06 PT 2331828.55		7°33'52"	39.61'	19.83' 300.0'
L4	B 471128.48 E 470975.50	B 2331828.55 E 2331636.53	S51°27'23.81"W		245.50'	
C4	PC 470975.50 PI 470963.94 PT 470948.60	PC 2331636.53 PI 2331622.02 PT 2331632.47		85°43'05"	29.92'	18.56' 20.0'
L5	B 470948.60 E 470922.42	B 2331632.47 E 2331650.30	S34°15'41.49"E		31.67'	

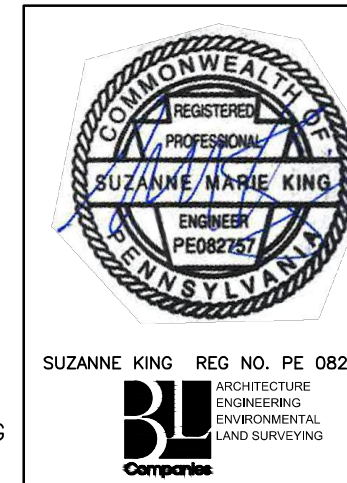
AR-SC-067.2 TYPICAL SECTION TABLE		
BEGIN STA	END STA	TYPICAL SECTION
1+65	6+11	D



ACCESS ROAD PROFILE



NOTE:
SEE TYPICAL SECTIONS SHEET 3 OF 4
(GENERAL OVERALL SECTION) FOR EXISTING
AND PROPOSED FEATURES LEGEND.



REVISIONS						
NO.	DATE	BY	DESCRIPTION	W.O. NO.	CHK.	APP.
0	07/17/2015	BL	ISSUED FOR PADEP SUBMITTAL	1161503	DAK	SMK
1	12/02/2015	BL	ISSUED FOR PADEP RESUBMITTAL	1161503	DAK	SMK
2	OCT. 2016	BL	PADEP TECHNICAL DEFICIENCY RESPONSE #1	1161503	DAK	SMK
3	APRIL 2017	BL	PADEP TECHNICAL DEFICIENCY RESPONSE #2	1161503	DAK	SMK
4	AUG. 2017	BL	PADEP TECHNICAL DEFICIENCY RESPONSE #3	1161503	DAK	SMK

TRANSCONTINENTAL GAS PIPE LINE COMPANY, LLC			
ATLANTIC SUNRISE PROJECT- PROPOSED 42" CENTRAL PENN LINE SOUTH			
ACCESS ROADS - ROADWAY LAYOUT AND PROFILE			
PROPOSED TEMPORARY ACCESS ROAD AR-SC-067.2			
FRAILEY TOWNSHIP, SCHUYLKILL COUNTY, PENNSYLVANIA			
DRAWN BY:	OLC/MS	DATE:	4/2015
CHECKED BY:	DAK	DATE:	06/12/15
APPROVED BY:	SMK	DATE:	07/07/15
W.O. NUMBER:	W01161503	DRAWING NUMBER:	24-1600-70-28-A/ LL113_9-AR-SC-067.2
ISSUED FOR:	CONSTRUCTION	SCALE:	AS NOTED
REVISION:	4	SHEET:	1
OF:	3		

