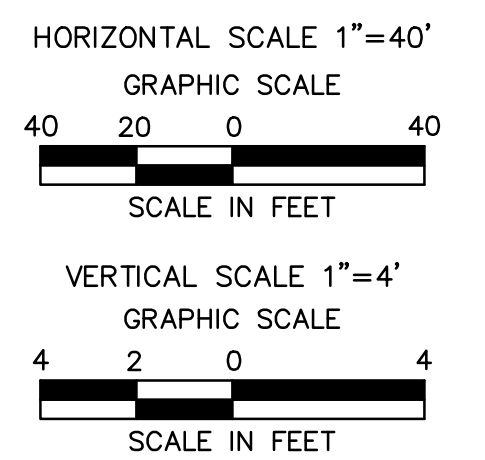
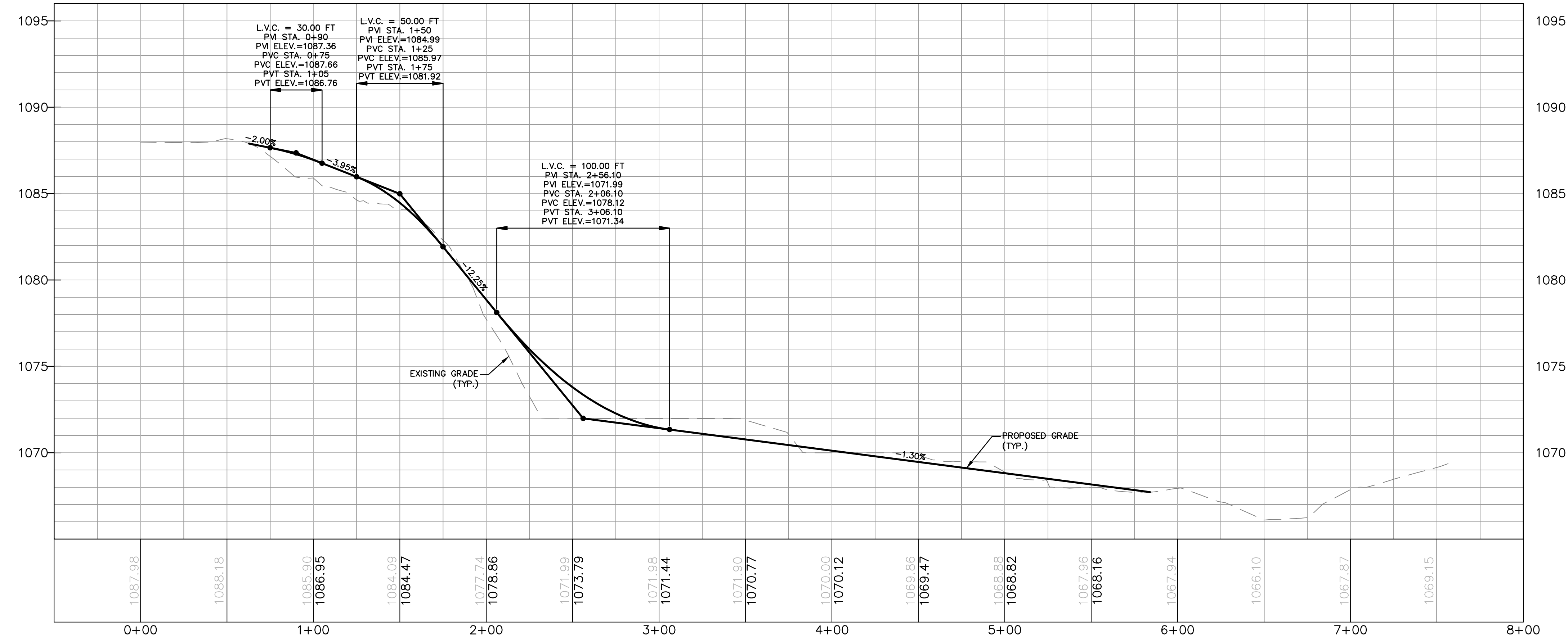


LU-020.3						
No.	Northing	Eastings	Bearing	Delta(Δ)	Length	Tangent Radius
L1	B 448551.91 E 448577.68	B 2454212.82 E 2454176.75	N54°26'51.14"W		44.33'	
C1	PC 448577.68 PI 448596.61 PT 448580.04	PC 2454176.75 PI 2454150.26 PT 2454122.23		66°08'59"	57.73'	32.56' 50.0'
C2	PC 448580.04 PI 448570.00 PT 448567.16	PC 2454122.23 PI 2454105.26 PT 2454085.75		22°18'21"	38.93'	19.72' 100.0'
L2	B 448567.16 E 448553.19	B 2454085.75 E 2453989.89	S81°42'30.32"W		96.88'	
C3	PC 448553.19 PI 448549.47 PT 448533.89	PC 2453989.89 PI 2453964.38 PT 2453943.85		28°54'34"	50.46'	25.78' 100.0'
L3	B 448533.89 E 448525.10	B 2453943.85 E 2453932.27	S52°47'55.90"W		14.54'	
C4	PC 448525.10 PI 448506.27 PT 448504.85	PC 2453932.27 PI 2453907.46 PT 2453876.35		34°35'47"	60.36'	31.14' 100.0'
L4	B 448504.85 E 448494.80	B 2453876.35 E 2453655.35	S87°23'42.76"W		221.23'	
C5	PC 448494.80 PI 448494.48 PT 448496.09	PC 2453655.35 PI 2453648.36 PT 2453641.55		15°55'45"	13.90'	7.00' 50.0'
C6	PC 448496.09 PI 448497.85 PT 448497.32	PC 2453641.55 PI 2453634.15 PT 2453626.56		17°18'21"	15.10'	7.61' 50.0'
L5	B 448497.32 E 448487.39	B 2453626.56 E 2453483.93	S86°01'06.48"W		142.97'	

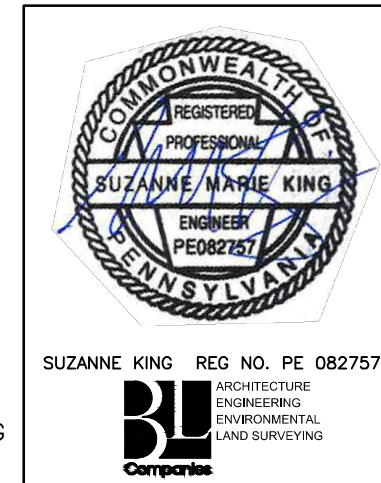
AR-LU-020.3 TYPICAL SECTION TABLE		
BEGIN STA	END STA	TYPICAL SECTION
0+25	5+84	E

**ACCESS ROAD LAYOUT**



**ACCESS ROAD PROFILE**

NOTE:  
SEE TYPICAL SECTIONS SHEET 3 OF 4  
(GENERAL OVERALL SECTION) FOR EXISTING  
AND PROPOSED FEATURES LEGEND.



REVISIONS						
NO.	DATE	BY	DESCRIPTION	W.O. NO.	CHK.	APP.
0	APRIL 2017	BL	PADEP TECHNICAL DEFICIENCY RESPONSE #2	1161481	DAK	SMK
1	AUG. 2017	BL	PADEP TECHNICAL DEFICIENCY RESPONSE #3	1161481	DAK	SMK

TRANSCONTINENTAL GAS PIPE LINE COMPANY, LLC					
ATLANTIC SUNRISE PROJECT- PROPOSED 30' CENTRAL PENN LINE NORTH					
ACCESS ROADS - ROADWAY LAYOUT AND PROFILE PROPOSED TEMPORARY ACCESS ROAD AR-LU-020.3 DALLAS TOWNSHIP, LUZERNE COUNTY, PENNSYLVANIA					
DRAWN BY:	OLC	DATE:	4/2015	ISSUED FOR BID:	SCALE:
CHECKED BY:	DAK	DATE:	06/11/15	ISSUED FOR CONSTRUCTION:	REVISION:
APPROVED BY:	SMK	DATE:	07/07/15	DRAWING NUMBER:	24-1601-70-28-A/ 1683_3-AR-LU-020.3
W.O.:	W01161481				SHEET 1 OF 3



Drawn By & Date/Time: saking Jul 26, 2017 - 1:06pm  
Drawing Location & Name: C:\0851\14\14c4909\DWG\010-CPLAN\_AR\_PP\_14c4909(10)-TLU-020.3.dwg