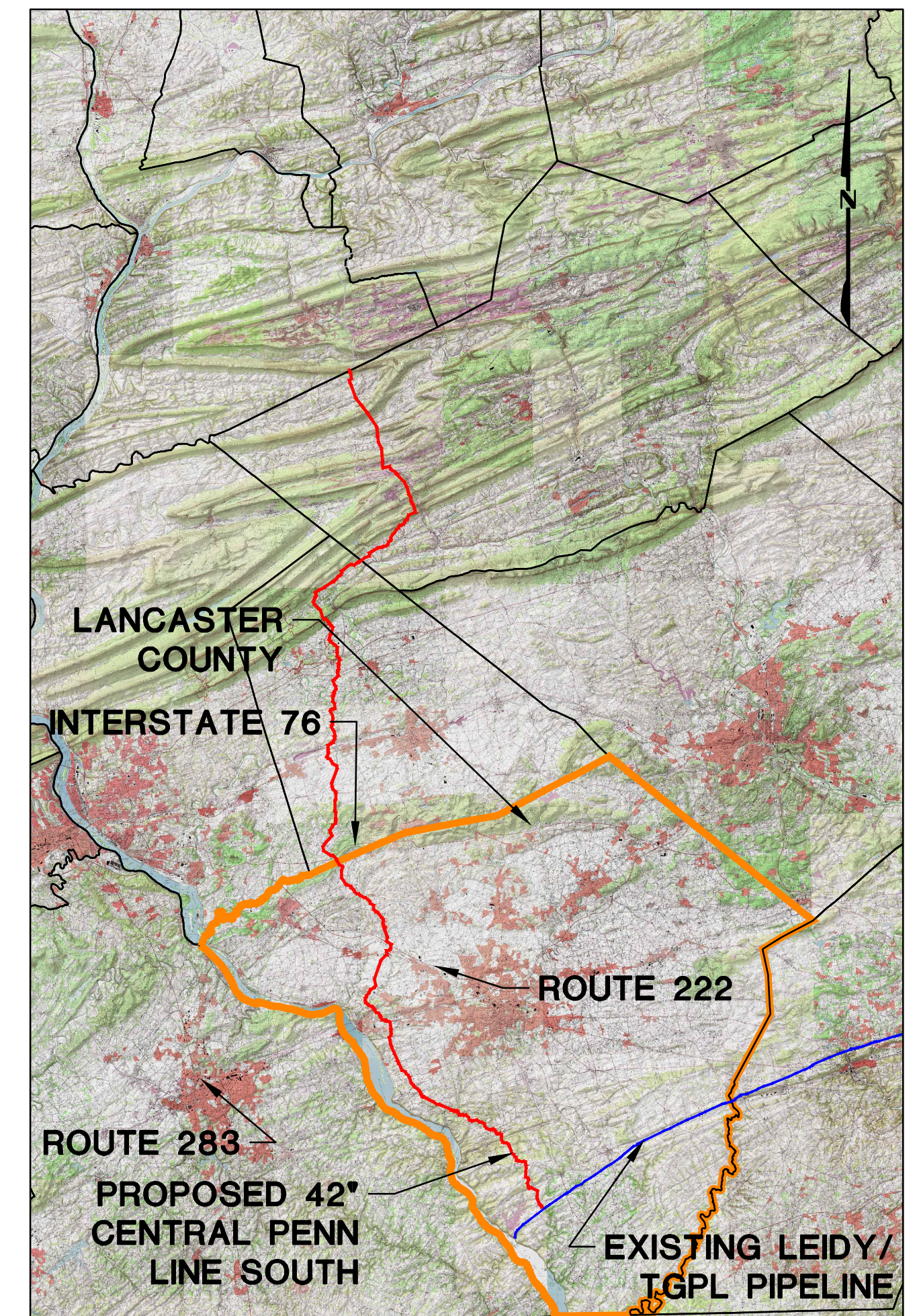
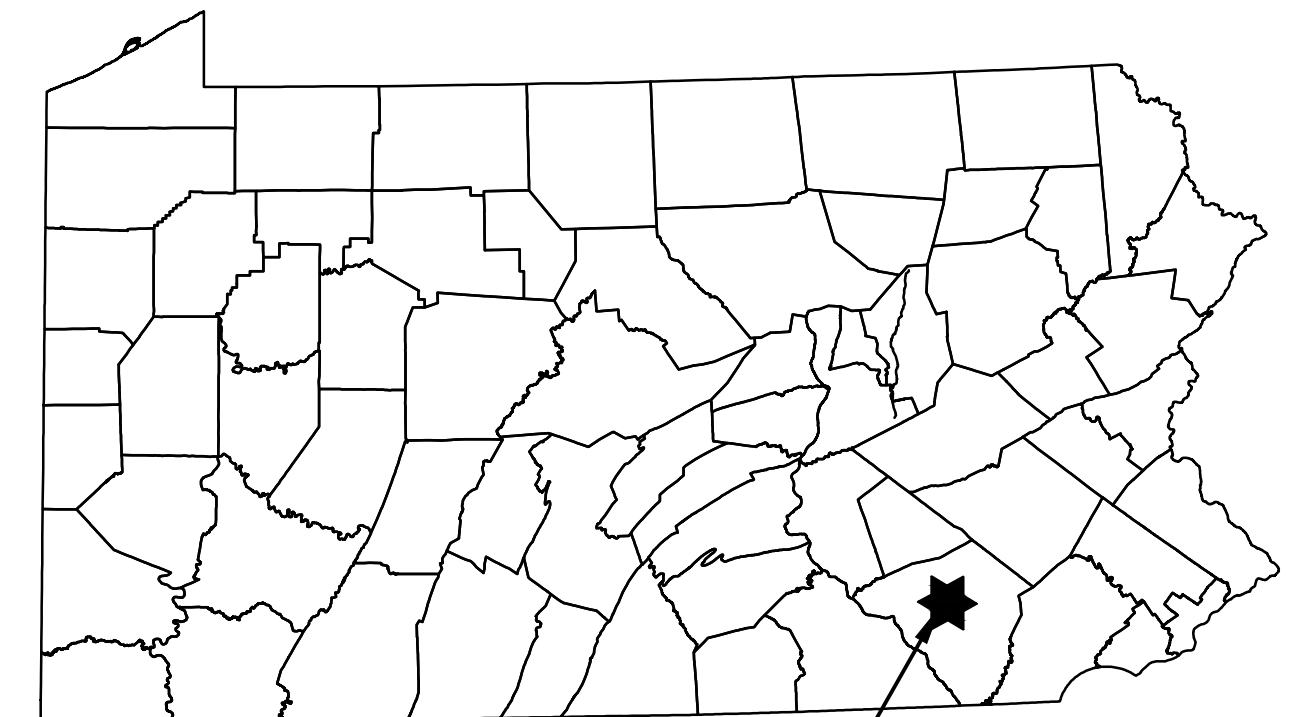


TRANSCONTINENTAL GAS PIPE LINE COMPANY, LLC EROSION & SEDIMENT CONTROL AND LAYOUT PLANS FOR ACCESS ROADS ATLANTIC SUNRISE PROJECT PROPOSED 42" CENTRAL PENN LINE SOUTH

DRUMORE, MARTIC, CONESTOGA, MANOR,
WEST HEMPFIELD, RAPHO, MOUNT JOY TOWNSHIPS AND
MOUNT JOY BOROUGH
LANCASTER COUNTY, PENNSYLVANIA



VICINITY MAP
SCALE: 1"=50,000'



PROJECT
LOCATION



PENNSYLVANIA ACT 287 (1974) AS AMENDED BY PENNSYLVANIA ACT 199 (2004) REQUIRES NO LESS THAN THREE (3) WORKING DAYS AND NO MORE THAN (10) WORKING DAYS NOTICE TO UTILITIES BEFORE YOU EXCAVATE, DRILL, BLAST OR DEMOLISH.

ROAD NAME & TYPE	DRAWING NO.	SHEET NO.	DRAWING NAME
GENERAL OVERALL	24-1600-70-28-A/LL113_9-AR-LA	1 of 4	COVER SHEET REVISED
		2 of 4	LOCATION MAP & ACCESS ROAD INDEX
		3 of 4	TYPICAL SECTIONS
		4 of 4	TYPICAL SECTIONS AND NOTES
AR-LA-002 Proposed Temporary	24-1600-70-28-A/LL113_9-AR-LA-002	1 of 3	ACCESS ROADS - ROADWAY LAYOUT AND PROFILE
		2 of 3	ACCESS ROADS - SOIL EROSION CONTROL PLAN
		3 of 3	ACCESS ROADS - SITE RESTORATION PLAN
		4 of 3	ACCESS ROADS - ROADWAY LAYOUT AND PROFILE
AR-LA-004 Proposed Temporary	24-1600-70-28-A/LL113_9-AR-LA-004	2 of 3	ACCESS ROADS - SOIL EROSION CONTROL PLAN
		3 of 3	ACCESS ROADS - SITE RESTORATION PLAN
		1 of 3	ACCESS ROADS - ROADWAY LAYOUT AND PROFILE
		2 of 3	ACCESS ROADS - SOIL EROSION CONTROL PLAN
AR-LA-006.1 Proposed Temporary	24-1600-70-28-A/LL113_9-AR-LA-006.1	3 of 3	ACCESS ROADS - SITE RESTORATION PLAN
		1 of 3	ACCESS ROADS - ROADWAY LAYOUT AND PROFILE
		2 of 3	ACCESS ROADS - SOIL EROSION CONTROL PLAN
		3 of 3	ACCESS ROADS - SITE RESTORATION PLAN
AR-LA-009.1 Proposed Temporary	24-1600-70-28-A/LL113_9-AR-LA-009.1	1 of 3	ACCESS ROADS - ROADWAY LAYOUT AND PROFILE REVISED
		2 of 3	ACCESS ROADS - SOIL EROSION CONTROL PLAN REVISED
		3 of 3	ACCESS ROADS - SITE RESTORATION PLAN REVISED
		1 of 2	ACCESS ROADS - ROADWAY LAYOUT AND PROFILE
AR-LA-010.2 Proposed Permanent	24-1600-70-28-A/LL113_9-AR-LA-010.2	2 of 2	ACCESS ROADS - SOIL EROSION CONTROL & SITE RESTORATION PLAN REVISED
		3 of 3	ACCESS ROADS - POST-CONSTRUCTION STORMWATER MANAGEMENT PLAN
		1 of 3	ACCESS ROADS - ROADWAY LAYOUT AND PROFILE
		2 of 3	ACCESS ROADS - SOIL EROSION CONTROL PLAN
AR-LA-011 Proposed Temporary	24-1600-70-28-A/LL113_9-AR-LA-011	3 of 3	ACCESS ROADS - SITE RESTORATION PLAN
		1 of 3	ACCESS ROADS - ROADWAY LAYOUT AND PROFILE
		2 of 3	ACCESS ROADS - SOIL EROSION CONTROL PLAN
		3 of 3	ACCESS ROADS - SITE RESTORATION PLAN
AR-LA-012.1 Proposed Temporary	24-1600-70-28-A/LL113_9-AR-LA-012.1	1 of 3	ACCESS ROADS - ROADWAY LAYOUT AND PROFILE
		2 of 3	ACCESS ROADS - SOIL EROSION CONTROL PLAN
		3 of 3	ACCESS ROADS - SITE RESTORATION PLAN
		1 of 3	ACCESS ROADS - ROADWAY LAYOUT AND PROFILE
AR-LA-012.2 Proposed Temporary	24-1600-70-28-A/LL113_9-AR-LA-012.2	2 of 3	ACCESS ROADS - SOIL EROSION CONTROL PLAN
		3 of 3	ACCESS ROADS - SITE RESTORATION PLAN
		1 of 3	ACCESS ROADS - ROADWAY LAYOUT AND PROFILE
		2 of 3	ACCESS ROADS - SOIL EROSION CONTROL PLAN
AR-LA-013.1 Proposed Temporary	24-1600-70-28-A/LL113_9-AR-LA-013.1	3 of 3	ACCESS ROADS - SITE RESTORATION PLAN
		1 of 3	ACCESS ROADS - ROADWAY LAYOUT AND PROFILE
		2 of 3	ACCESS ROADS - SOIL EROSION CONTROL PLAN
		3 of 3	ACCESS ROADS - SITE RESTORATION PLAN
AR-LA-013.2 Proposed Temporary	24-1600-70-28-A/LL113_9-AR-LA-013.2	1 of 3	ACCESS ROADS - ROADWAY LAYOUT AND PROFILE
		2 of 3	ACCESS ROADS - SOIL EROSION CONTROL PLAN
		3 of 3	ACCESS ROADS - SITE RESTORATION PLAN
		1 of 3	ACCESS ROADS - ROADWAY LAYOUT AND PROFILE
AR-LA-016 Proposed Temporary	24-1600-70-28-A/LL113_9-AR-LA-016	2 of 3	ACCESS ROADS - SOIL EROSION CONTROL PLAN
		3 of 3	ACCESS ROADS - SITE RESTORATION PLAN
		1 of 2	ACCESS ROADS - ROADWAY LAYOUT AND PROFILE
		2 of 2	ACCESS ROADS - SOIL EROSION CONTROL
AR-LA-018.3 Proposed Permanent	24-1600-70-28-A/LL113_9-AR-LA-018.3	3 of 3	ACCESS ROADS - POST-CONSTRUCTION STORMWATER MANAGEMENT PLAN
		1 of 4	ACCESS ROADS - ROADWAY LAYOUT AND PROFILE
		2 of 4	ACCESS ROADS - ROADWAY LAYOUT AND PROFILE
		3 of 4	ACCESS ROADS - SOIL EROSION CONTROL REVISED
AR-LA-020 Proposed Temporary	24-1600-70-28-A/LL113_9-AR-LA-020	4 of 4	ACCESS ROADS - SITE RESTORATION PLAN
		1 of 7	ACCESS ROADS - ROADWAY LAYOUT AND PROFILE
		2 of 7	ACCESS ROADS - ROADWAY LAYOUT AND PROFILE
		3 of 7	ACCESS ROADS - ROADWAY LAYOUT AND PROFILE
AR-LA-021 Proposed Permanent	24-1600-70-28-A/LL113_9-AR-LA-021	4 of 7	ACCESS ROADS - SOIL EROSION CONTROL
		5 of 7	ACCESS ROADS - SOIL EROSION CONTROL
		6 of 7	ACCESS ROADS - SITE RESTORATION PLAN
		7 of 7	ACCESS ROADS - SITE RESTORATION PLAN
AR-LA-023.1 Proposed Temporary	24-1600-70-28-A/LL113_9-AR-LA-023.1	1 of 3	ACCESS ROADS - ROADWAY LAYOUT AND PROFILE
		2 of 3	ACCESS ROADS - SOIL EROSION CONTROL
		3 of 3	ACCESS ROADS - SITE RESTORATION PLAN
		1 of 4	ACCESS ROADS - ROADWAY LAYOUT AND PROFILE
AR-LA-023.2 Proposed Temporary	24-1600-70-28-A/LL113_9-AR-LA-023.2	2 of 4	ACCESS ROADS - ROADWAY LAYOUT AND PROFILE
		3 of 4	ACCESS ROADS - SOIL EROSION CONTROL PLAN
		4 of 4	ACCESS ROADS - SITE RESTORATION PLAN
		1 of 3	ACCESS ROADS - ROADWAY LAYOUT AND PROFILE
AR-LA-023.3 Proposed Temporary	24-1600-70-28-A/LL113_9-AR-LA-023.3	2 of 3	ACCESS ROADS - SOIL EROSION CONTROL
		3 of 3	ACCESS ROADS - SITE RESTORATION PLAN
		1 of 2	ACCESS ROADS - ROADWAY LAYOUT AND PROFILE
		2 of 2	ACCESS ROADS - SOIL EROSION CONTROL
AR-LA-026.2.1 Proposed Permanent	24-1600-70-28-A/LL113_9-AR-LA-026.2.1	3 of 3	ACCESS ROADS - POST-CONSTRUCTION STORMWATER MANAGEMENT PLAN
		1 of 3	ACCESS ROADS - ROADWAY LAYOUT AND PROFILE
		2 of 3	ACCESS ROADS - SOIL EROSION CONTROL
		3 of 3	ACCESS ROADS - POST-CONSTRUCTION STORMWATER MANAGEMENT PLAN
AR-LA-026.3 Proposed Permanent	24-1600-70-28-A/LL113_9-AR-LA-026.3	1 of 3	ACCESS ROADS - ROADWAY LAYOUT AND PROFILE
		3 of 3	ACCESS ROADS - POST-CONSTRUCTION STORMWATER MANAGEMENT PLAN
		1 of 3	ACCESS ROADS - ROADWAY LAYOUT AND PROFILE
		2 of 3	ACCESS ROADS - SOIL EROSION CONTROL PLAN
AR-LA-026.4 Proposed Temporary	24-1600-70-28-A/LL113_9-AR-LA-026.4	3 of 3	ACCESS ROADS - SITE RESTORATION PLAN
		1 of 7	ACCESS ROADS - ROADWAY LAYOUT AND PROFILE
		2 of 7	ACCESS ROADS - ROADWAY LAYOUT AND PROFILE
		3 of 7	ACCESS ROADS - ROADWAY LAYOUT AND PROFILE
AR-LA-027.1 Proposed Temporary	24-1600-70-28-A/LL113_9-AR-LA-027.1	4 of 7	ACCESS ROADS - SOIL EROSION CONTROL PLAN
		5 of 7	ACCESS ROADS - SOIL EROSION CONTROL PLAN
		6 of 7	ACCESS ROADS - SITE RESTORATION PLAN
		7 of 7	ACCESS ROADS - SITE RESTORATION PLAN
AR-LA-028.1 Proposed Temporary	24-1600-70-28-A/LL113_9-AR-LA-028.1	1 of 4	ACCESS ROADS - ROADWAY LAYOUT AND PROFILE
		2 of 4	ACCESS ROADS - ROADWAY LAYOUT AND PROFILE
		3 of 4	ACCESS ROADS - SOIL EROSION CONTROL PLAN
		4 of 4	ACCESS ROADS - SITE RESTORATION PLAN
AR-LA-029.2 Proposed Permanent	24-1600-70-28-A/LL113_9-AR-LA-029.2	1 of 3	ACCESS ROADS - ROADWAY LAYOUT AND PROFILE
		2 of 3	ACCESS ROADS - SOIL EROSION CONTROL
		3 of 3	ACCESS ROADS - POST-CONSTRUCTION STORMWATER MANAGEMENT PLAN
		1 of 2	ACCESS ROADS - ROADWAY LAYOUT AND PROFILE
AR-LA-029.3 Proposed Permanent	24-1600-70-28-A/LL113_9-AR-LA-029.3	2 of 2	ACCESS ROADS - SOIL EROSION CONTROL
		3 of 3	ACCESS ROADS - POST-CONSTRUCTION STORMWATER MANAGEMENT PLAN
		1 of 3	ACCESS ROADS - ROADWAY LAYOUT AND PROFILE REVISED
		2 of 3	ACCESS ROADS - SOIL EROSION CONTROL PLAN REVISED
AR-LA-030 Proposed Temporary	24-1600-70-28-A/LL113_9-AR-LA-030	3 of 3	ACCESS ROADS - SITE RESTORATION PLAN REVISED
		1 of 7	ACCESS ROADS - ROADWAY LAYOUT AND PROFILE
		2 of 7	ACCESS ROADS - ROADWAY LAYOUT AND PROFILE
		3 of 7	ACCESS ROADS - ROADWAY LAYOUT AND PROFILE
AR-LE-033.1 Proposed Temporary	24-1600-70-28-A/LL113_9-AR-LE-033.1	4 of 7	ACCESS ROADS - SOIL EROSION CONTROL PLAN REVISED
		5 of 7	ACCESS ROADS - SOIL EROSION CONTROL PLAN
		6 of 7	ACCESS ROADS - SITE RESTORATION PLAN
		7 of 7	ACCESS ROADS - SITE RESTORATION PLAN

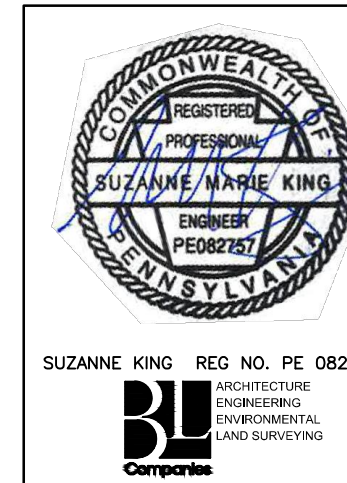
NOTE: FULL ROADS THAT ARE CROSSED OUT IN THE ABOVE TABLE HAVE BEEN REMOVED FROM THE PROJECT. PCSM PLANS THAT ARE CROSSED OUT IN THE ABOVE TABLE HAVE BEEN MOVED TO THE SEPARATE PCSM PLAN SET.

SOIL TYPES AND LIMITATIONS		CUTBANKS	CAVE	CORROSION TO CONCRETE/STEEL	DROUGHT	EASILY ERODIBLE	FLOODING	DEPTH TO SATURATED ZONE/SEASONAL HIGH WATER TABLE	HYDRO/HYDRIC INCLUSIONS	LOW STRENGTH/LANDSLIDE PRONE	SLOW PERCOLATION	PIPING	POOR SOURCE OF TOPSOIL	FROST ACTION	SHRINK-SWELL	POTENTIAL SINKHOLE	PONDING	WETNESS
BdA	BEDINGTON SILT LOAM, 0 TO 3 PERCENT SLOPES	X	C	X	X				X	X	X	X	X					
BdB	BEDINGTON SILT LOAM, 3 TO 8 PERCENT SLOPES	X	C	X	X				X	X	X	X	X					
BdC	BEDINGTON SILT LOAM, 8 TO 15 PERCENT SLOPES	X	C	X	X				X	X	X	X	X					
BdD	BEDINGTON CHANNERY SILT LOAM, 15 TO 25 PERCENT SLOPES	X	C	X	X				X	X	X	X	X					
BuB	BUCKS SILT LOAM, 3 TO 8 PERCENT SLOPES	X	C	X					X	X	X	X	X					
CbB	CHESTER SILT LOAM, 3 TO 8 PERCENT SLOPES	X	C	X					X	X	X	X	X					
CbC	CHESTER SILT LOAM, 8 TO 15 PERCENT SLOPES	X	C	X					X	X	X	X	X					
CkA	CLARKSBURG SILT LOAM, 0 TO 5 PERCENT SLOPES	X	C/S	X			X	X	X	X	X	X	X	X	X	X	X	X
Cm	COMUS SILT LOAM, 0 TO 3 PERCENT SLOPES	X	C	X	X				X	X	X	X	X					
DdA	DUFFIELD SILT LOAM, 0 TO 3 PERCENT SLOPES	X	C/S	X					X	X	X	X	X			X	X	X
Ff	FLUVIAQUENTS AND UDIFLUENTS, LOAMY	X	C/S	X	X	X	X	X	X	X	X	X	X					
GdB	GLENELG SILT LOAM, 3 TO 8 PERCENT SLOPES	X	C	X					X	X	X	X	X					X
GdC	GLENELG SILT LOAM, 8 TO 15 PERCENT SLOPES	X	C	X					X	X	X	X	X					X
GdD	GLENVILLE SILT LOAM, 3 TO 8 PERCENT SLOPES	X	C/S	X			X	X	X	X	X	X	X					X
HaA	HAGERSTOWN SILT LOAM, 0 TO 3 PERCENT SLOPES	X	S	X	X				X	X	X	X	X	X	X	X	X	X
HaB	HAGERSTOWN SILT LOAM, 3 TO 8 PERCENT SLOPES	X	S	X	X				X	X	X	X	X	X	X	X	X	X
HbC	HAGERSTOWN SILTY CLAY LOAM, 8 TO 15 PERCENT SLOPES	X	S	X	X				X	X	X	X	X	X	X	X	X	X
LdB	LETOART SILT LOAM, 3 TO 8 PERCENT SLOPES	X	C	X					X	X	X	X	X					X
MaB	MANOR SILT LOAM, 3 TO 8 PERCENT SLOPES	X	C	X					X	X	X	X	X					
MaC	MANOR SILT LOAM, 8 TO 15 PERCENT SLOPES	X	C	X					X	X	X	X	X					
MaD	MANOR SILT LOAM, 15 TO 25 PERCENT SLOPES	X	C	X					X	X	X	X	X					
MBB	MANOR VERY STONY SILT LOAM, 3 TO 8 PERCENT SLOPES	X	C	X					X	X	X	X	X					
MdD	MANOR VERY STONY SILT LOAM, 8 TO 15 PERCENT SLOPES	X	C	X					X	X	X	X	X					
MfB	MANOR VERY STONY SILT LOAM, 25 TO 60 PERCENT SLOPES	X	C	X					X	X	X	X	X					
Nc	NEUARK SILT LOAM, 0 TO 3 PERCENT SLOPES	X	S	X	X		X	X	X	X	X	X	X				X	
PeC	PEQUEA SILT LOAM, 8 TO 15 PERCENT SLOPES	X	X						X	X	X	X	X					
PeD	PEQUEA SILT LOAM, 15 TO 25 PERCENT SLOPES	X	X						X	X	X	X	X					
Rd	ROWLAND SILT LOAM, 0 TO 3 PERCENT SLOPES	X	C/S	X	X	X	X	X	X	X	X	X	X					X

LEGEND
 C/S or S APPLIES TO SOIL
 X CORROSION TO STEEL
 / CORROSION TO CONCRETE
 S CORROSION TO STEEL AND CONCRETE

ABBREVIATIONS		
AASHTO	AMERICAN ASSOCIATION OF STATE HIGHWAY AND TRANSPORTATION OFFICIALS	INVERT LENGTH, LEFT LIMIT OF DISTURBANCE
ABACT	ANTIDEGRADATION BEST AVAILABLE COMBINATION OF TECHNOLOGIES	MF MIGRATORY FISHES MLV MAIN LINE VALVE
APPROX.	APPROXIMATE	N/A NOT APPLICABLE
AR	ACCESS ROAD	PADEP PENNSYLVANIA DEPARTMENT OF ENVIRONMENTAL PROTECTION
AC	ACRE/ACRES	PROPOSED
BMP	BEST MANAGEMENT PRACTICES	PR
CWF	COLDWATER FISHES	R RIGHT
D	DEPTH	RCP REINFORCED CONCRETE PIPE
D.I.P.	DUCTILE IRON PIPE	STA STATION
E&S	EROSION AND SEDIMENT CONTROL	TGPL TRANSCONTINENTAL GAS PIPE LINE
ESCCGP-2	EROSION AND SEDIMENT CONTROL GENERAL PERMIT - 2	TSF TROUT STOCKED FISHERY TYP. TYPICAL
EV	EXCEPTIONAL VALUE	UNK UNKNOWN
EX	EXISTING	UNT UNNAMED TRIBUTARY
GTD	GRADE TO DRAIN	V VERTICAL
H	HORIZONTAL	W WIDTH
HQ	HIGH QUALITY	WWF WARMWATER FISHES

ENGINEER OF RECORD
 BL COMPANIES
 4242 CARLISLE PIKE, SUITE 260
 CAMP HILL, PA 17011
 P:717-651-9850
 F:717-651-9858



REVISIONS			
NO.	DATE	BY	DESCRIPTION
0	07/17/2015	BL	ISSUED FOR PADEP SUBMITTAL
1	12/02/2015	BL	ISSUED FOR PADEP RESUBMITTAL
2	OCT. 2016	BL	PADEP TECHNICAL DEFICIENCY RESPONSE #1
3	APRIL 2017	BL	PADEP TECHNICAL DEFICIENCY RESPONSE #2
4	AUG. 2017	BL	PADEP TECHNICAL DEFICIENCY RESPONSE #3

TRANSCONTINENTAL GAS PIPE LINE COMPANY, LLC			
ATLANTIC SUNRISE PROJECT - PROPOSED 42" CENTRAL PENN LINE SOUTH			
ACCESS ROADS LANCASTER COUNTY, PENNSYLVANIA			
COVER SHEET			
DRAWN BY:	OLC/MS	DATE:	4/2015
CHECKED BY:	DAK	DATE:	06/12/15
APPROVED BY:	SMK	DATE:	07/07/15
NO.	W01161503	ISSUED FOR:	CONSTRUCTION
SCALE:	AS SHOWN	REVISION:	4
DRAWING NUMBER:		24-1600-70-28-A/LL113_9-AR-LA	
SHEET 1		OF 4	



Drawing Location & Name: G:\08514\14C\14C4909\DWG\020-CPLS\AR_CV14C4909(00)_Lan.kwd
 Drawing Date/Time: saking Jul 27, 2017 - 4:00pm