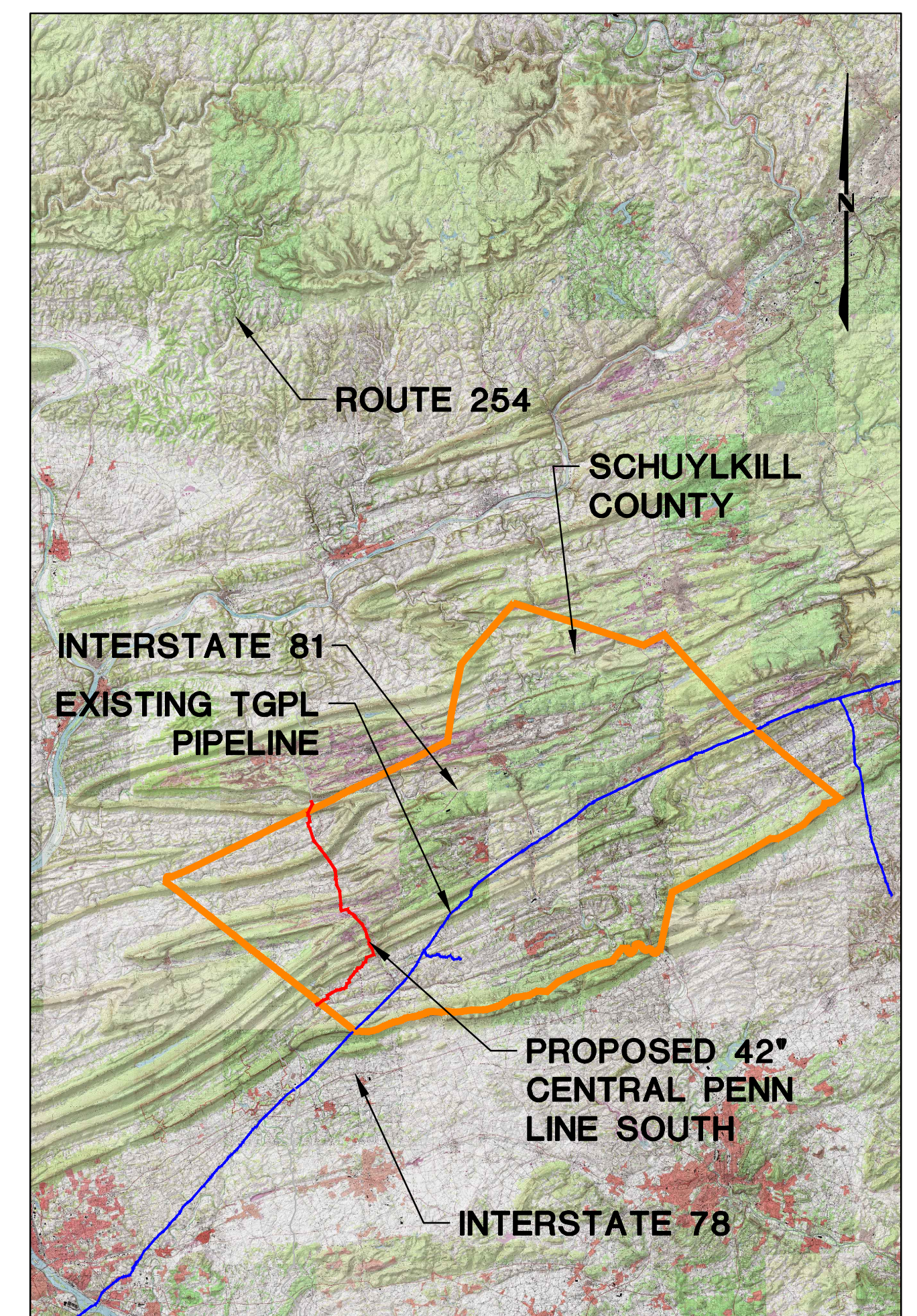
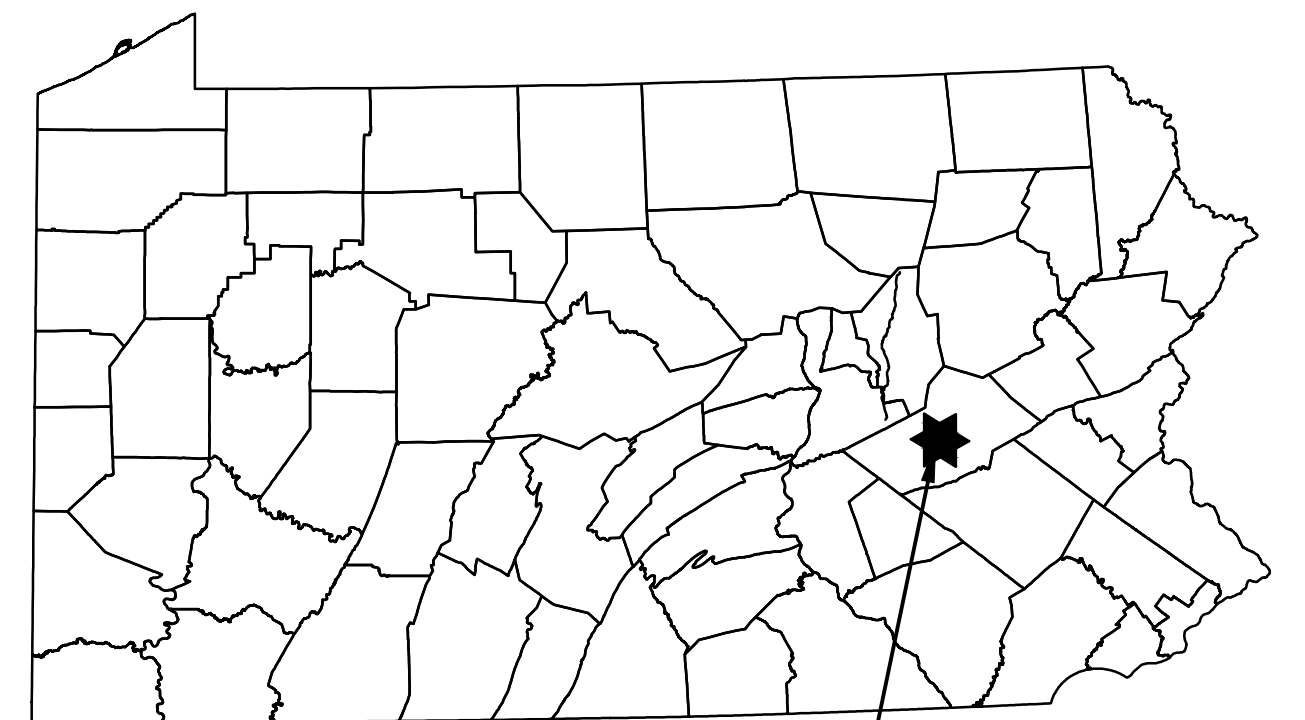


TRANSCONTINENTAL GAS PIPE LINE COMPANY, LLC EROSION CONTROL AND LAYOUT PLANS FOR ACCESS ROADS ATLANTIC SUNRISE PROJECT PROPOSED 42" CENTRAL PENN LINE SOUTH ELDRED, HEGINS, FRAILEY, PORTER, TREMONT, AND PINE GROVE TOWNSHIPS SCHUYLKILL COUNTY, PENNSYLVANIA (EAST CAMERON TOWNSHIP NORTHUMBERLAND COUNTY, PENNSYLVANIA)



USGS MOUNT CARMEL, SHAMOKIN, VALLEY VIEW, TREMONT, AND PINE GROVE QUADRANGLES
VICINITY MAP
SCALE: 1"=50,000'



PROJECT
LOCATION

ACCESS ROAD PARTIALLY WITHIN NORTHUMBERLAND AND SCHUYLKILL COUNTIES:

ROAD NAME & TYPE	DRAWING NO.	SHEET NO.	DRAWING NAME
AR-NO-075 Proposed Temporary	24-1600-70-28-A/LL113_9-AR-NO-075	1 of 27	ACCESS ROADS - ROADWAY LAYOUT AND PROFILE
		2 of 27	ACCESS ROADS - ROADWAY LAYOUT AND PROFILE
		3 of 27	ACCESS ROADS - ROADWAY LAYOUT AND PROFILE
		4 of 27	ACCESS ROADS - ROADWAY LAYOUT AND PROFILE
		5 of 27	ACCESS ROADS - ROADWAY LAYOUT AND PROFILE
		6 of 27	ACCESS ROADS - ROADWAY LAYOUT AND PROFILE
		7 of 27	ACCESS ROADS - ROADWAY LAYOUT AND PROFILE
		8 of 27	ACCESS ROADS - ROADWAY LAYOUT AND PROFILE
		9 of 27	ACCESS ROADS - ROADWAY LAYOUT AND PROFILE
		10 of 27	ACCESS ROADS - ROADWAY LAYOUT AND PROFILE
		11 of 27	ACCESS ROADS - ROADWAY LAYOUT AND PROFILE
		12 of 27	ACCESS ROADS - ROADWAY LAYOUT AND PROFILE
		13 of 27	ACCESS ROADS - ROADWAY LAYOUT AND PROFILE
		14 of 27	ACCESS ROADS - SOIL EROSION CONTROL PLAN
		15 of 27	ACCESS ROADS - SOIL EROSION CONTROL PLAN
		16 of 27	ACCESS ROADS - SOIL EROSION CONTROL PLAN
		17 of 27	ACCESS ROADS - SOIL EROSION CONTROL PLAN
		18 of 27	ACCESS ROADS - SOIL EROSION CONTROL PLAN
		19 of 27	ACCESS ROADS - SOIL EROSION CONTROL PLAN
		20 of 27	ACCESS ROADS - SOIL EROSION CONTROL PLAN
		21 of 27	ACCESS ROADS - SOIL EROSION CONTROL PLAN
		22 of 27	ACCESS ROADS - SOIL EROSION CONTROL PLAN
		23 of 27	ACCESS ROADS - SOIL EROSION CONTROL PLAN
		24 of 27	ACCESS ROADS - SOIL EROSION CONTROL PLAN
		25 of 27	ACCESS ROADS - SOIL EROSION CONTROL PLAN
		26 of 27	ACCESS ROADS - SOIL EROSION CONTROL PLAN
		27 of 27	ACCESS ROADS - SOIL EROSION CONTROL PLAN

SOIL TYPES AND LIMITATIONS

MAP UNIT NAME	MAP UNIT DESIGNATION	CUTBANKS CAVE	CORROSION TO CONCRETE/STEEL	DROUGHTY	EASILY ERODIBLE	FLOODING	DEPTH TO SATURATED ZONE/SEASONAL HIGH WATER TABLE	HYDRIC/HYDRIC INCLUSIONS	LOW STRENGTH / LANDSLIDE PRONE	SLOW PERCOLATION	PIPING	POOR SOURCE OF TOPSOIL	FROST ACTION	SHRINK - SWELL	POTENTIAL SINKHOLE	PONDING	WETNESS
AgA	ALVIRA SILT LOAM, 0 TO 3 PERCENT SLOPES	X	C/S	X	X	X	X	X	X	X	X	X	X	X	X	X	X
At	ATKINS SILT LOAM, 0 TO 3 PERCENT SLOPES	X	C/S	X	X	X	X	X	X	X	X	X	X	X	X	X	X
Ba	BASHER SILT LOAM, 0 TO 3 PERCENT SLOPES	X	C/S	X	X	X	X	X	X	X	X	X	X	X	X	X	X
BeC	BERKS CHANNERY SILT LOAM, 8 TO 15 PERCENT SLOPES	X	C	X	X	X	X	X	X	X	X	X	X	X	X	X	X
Bxh	BUCHANAN EXTREMELY STONY LOAM, 3 TO 8 PERCENT SLOPES	X	C/S	X	X	X	X	X	X	X	X	X	X	X	X	X	X
BxD	BUCHANAN EXTREMELY STONY LOAM, 8 TO 25 PERCENT SLOPES	X	C/S	X	X	X	X	X	X	X	X	X	X	X	X	X	X
CaB	CALVIN SHALY SILT LOAM, 3 TO 8 PERCENT SLOPES	X	C	X	X	X	X	X	X	X	X	X	X	X	X	X	X
CaC	CALVIN SHALY SILT LOAM, 3 TO 15 PERCENT SLOPES	X	C	X	X	X	X	X	X	X	X	X	X	X	X	X	X
DkB	DEKALB EXTREMELY STONY SANDY LOAM, 3 TO 8 PERCENT SLOPE	X	C	X	X	X	X	X	X	X	X	X	X	X	X	X	X
DkC	DEKALB EXTREMELY STONY SANDY LOAM, 8 TO 25 PERCENT SLOPE	X	C	X	X	X	X	X	X	X	X	X	X	X	X	X	X
DMF	DEKALB AND LEHEW EXTREMELY STONY SOIL, STEEP	X	C	X	X	X	X	X	X	X	X	X	X	X	X	X	X
DR	DEKALB-RUBBLE LAND ASSOCIATION	-	-	-	-	-	-	-	-	-	-	-	-	-	-	-	-
Du	DUMPS, MINE	-	-	-	-	-	-	-	-	-	-	-	-	-	-	-	-
HaB	HARTLETON CHANNERY SILT LOAM, 3 TO 8 PERCENT SLOPES	X	C	X	X	X	X	X	X	X	X	X	X	X	X	X	X
HaC	HARTLETON CHANNERY SILT LOAM, 8 TO 15 PERCENT SLOPES	X	C	X	X	X	X	X	X	X	X	X	X	X	X	X	X
HIC	HAZLETON EXTREMELY STONY FINE SANDY LOAM, 8 TO 25 PERCENT SLOPES	X	C	X	X	X	X	X	X	X	X	X	X	X	X	X	X
LdG	LADIG EXTREMELY STONY LOAM, 3 TO 8 PERCENT SLOPES	X	C/S	X	X	X	X	X	X	X	X	X	X	X	X	X	X
LdC	LADIG EXTREMELY STONY LOAM, 8 TO 25 PERCENT SLOPES	X	C/S	X	X	X	X	X	X	X	X	X	X	X	X	X	X
LeB	LEOK KILL CHANNERY SILT LOAM, 3 TO 8 PERCENT SLOPES	X	C	X	X	X	X	X	X	X	X	X	X	X	X	X	X
LeC	LEOK KILL CHANNERY SILT LOAM, 8 TO 15 PERCENT SLOPES	X	C	X	X	X	X	X	X	X	X	X	X	X	X	X	X
MeB	MECKESVILLE LOAM, 3 TO 8 PERCENT SLOPES	X	C/S	X	X	X	X	X	X	X	X	X	X	X	X	X	X
MeC	MECKESVILLE LOAM, 8 TO 15 PERCENT SLOPES	X	C/S	X	X	X	X	X	X	X	X	X	X	X	X	X	X
MkC	MECKESVILLE VERY STONY LOAM, 8 TO 25 PERCENT SLOPES	X	C/S	X	X	X	X	X	X	X	X	X	X	X	X	X	X
UM	UDORTHERTS, STRIP MINE, 0 TO 65 PERCENT SLOPES	X	C/S	X	X	X	X	X	X	X	X	X	X	X	X	X	X
WaB	WATSON SILT LOAM, 3 TO 8 PERCENT SLOPES	X	C/S	X	X	X	X	X	X	X	X	X	X	X	X	X	X
WKF	WEIKERT AND KLINESVILLE SHALY SILT LOAMS, STEEP	X	C/S	X	X	X	X	X	X	X	X	X	X	X	X	X	X

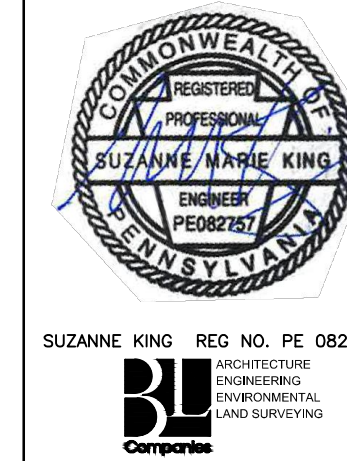
LEGEND
 X APPLIES TO SOIL
 C CORROSION TO STEEL
 S CORROSION TO CONCRETE
 C/S CORROSION TO STEEL AND CONCRETE

ABBREVIATIONS		
AASHTO	AMERICAN ASSOCIATION OF STATE HIGHWAY AND TRANSPORTATION OFFICIALS	INV INVERT L LENGTH, LEFT LDD LIMIT OF DISTURBANCE
ABACT	ANTIDEGRADATION BEST AVAILABLE COMBINATION OF TECHNOLOGIES	MF MIGRATORY FISHES MLV MAIN LINE VALVE N/A NOT APPLICABLE
APPROX.	APPROXIMATE	N/A NOT APPLICABLE
AR	ACCESS ROAD	PADEP PENNSYLVANIA DEPARTMENT OF ENVIRONMENTAL PROTECTION
AC	ACRE/ACRES	
BMP	BEST MANAGEMENT PRACTICES	PR PROPOSED
CWF	COLDWATER FISHES	R RIGHT
D	DEPTH	PCP REINFORCED CONCRETE PIPE
D.I.P.	DUCTILE IRON PIPE	STA STATION
E&S	EROSION AND SEDIMENT CONTROL	TGPI TRANSCONTINENTAL GAS PIPE LINE
ESCGP-2	EROSION AND SEDIMENT CONTROL	TSF TROUT STOCKED FISHERY
EV	GENERAL PERMIT - 2	TYP. TYPICAL
EX	EXCEPTIONAL VALUE	UNK UNKNOWN
EV	EXISTING	UNK UNNAMED TRIBUTARY
GD	GRADE TO DRAIN	V VERTICAL
H	HORIZONTAL	W WIDTH
HQ	HIGH QUALITY	WWF WARMWATER FISHES

REVISIONS						
NO.	DATE	BY	DESCRIPTION	W.D. NO.	CHK.	APP.
0	07/17/2015	BL	ISSUED FOR PADEP SUBMITTAL	1161503	DAK	SMK
1	12/02/2015	BL	ISSUED FOR PADEP RESUBMITTAL	1161503	DAK	SMK
2	OCT. 2016	BL	PADEP TECHNICAL DEFICIENCY RESPONSE #1	1161503	DAK	SMK
3	APRIL 2017	BL	PADEP TECHNICAL DEFICIENCY RESPONSE #2	1161503	DAK	SMK
4	AUG. 2017	BL	PADEP TECHNICAL DEFICIENCY RESPONSE #3	1161503	DAK	SMK

DRAWN BY:		DATE:	ISSUED FOR:	SCALE:
OLC/MS	4/2015	ISSUED FOR BID		
CHECKED BY:	DATE:	ISSUED FOR CONSTRUCTION:	REVISION:	
SMK	06/12/15		4	
APPROVED BY:	DATE:	DRAWING NUMBER:	SHEET	
SMK	07/07/15	W01161503	1	
PROJECT:		PROJECT:		
ATLANTIC SUNRISE PROJECT - PROPOSED 42" CENTRAL PENN LINE SOUTH		SCHUYLKILL COUNTY, PENNSYLVANIA		
COVER SHEET		24-1600-70-28-A/LL113_9-AR-SC		OF 4

ENGINEER OF RECORD
 BL COMPANIES
 4242 CARLISLE PIKE, SUITE 260
 CAMP HILL, PA 17011
 P:717-651-9850
 F:717-651-9858



ROAD NAME & TYPE	DRAWING NO.	SHEET NO.	DRAWING NAME
GENERAL OVERALL	24-1600-70-28-A/LL113_9-AR-SC	1 of 4	COVER SHEET
		2 of 4	LOCATION MAP & ACCESS ROAD INDEX
		3 of 4	TYPICAL SECTIONS
		4 of 4	TYPICAL SECTIONS AND NOTES
AR-SC-060.1.1 Proposed Temporary	24-1600-70-28-A/LL113_9-AR-SC-060.1.1	1 of 3	ACCESS ROADS - ROADWAY LAYOUT AND PROFILE
		2 of 3	ACCESS ROADS - SOIL EROSION CONTROL PLAN
		3 of 3	ACCESS ROADS - SITE RESTORATION PLAN
AR-SC-060.2 Proposed Temporary	24-1600-70-28-A/LL113_9-AR-SC-060.2	1 of 3	ACCESS ROADS - ROADWAY LAYOUT AND PROFILE
		2 of 3	ACCESS ROADS - SOIL EROSION CONTROL PLAN
		3 of 3	ACCESS ROADS - SITE RESTORATION PLAN
AR-SC-060.4 Proposed Temporary	24-1600-70-28-A/LL113_9-AR-SC-060.4	1 of 3	ACCESS ROADS - ROADWAY LAYOUT AND PROFILE
		2 of 3	ACCESS ROADS - SOIL EROSION CONTROL PLAN
		3 of 3	ACCESS ROADS - SITE RESTORATION PLAN
AR-SC-060.5 Proposed Temporary	24-1600-70-28-A/LL113_9-AR-SC-060.5	1 of 3	ACCESS ROADS - ROADWAY LAYOUT AND PROFILE
		2 of 3	ACCESS ROADS - SOIL EROSION CONTROL PLAN
		3 of 3	ACCESS ROADS - SITE RESTORATION PLAN
AR-SC-061.1 Proposed Temporary	24-1600-70-28-A/LL113_9-AR-SC-061.1	1 of 7	ACCESS ROADS - ROADWAY LAYOUT AND PROFILE
		2 of 7	ACCESS ROADS - ROADWAY LAYOUT AND PROFILE
		3 of 7	ACCESS ROADS - ROADWAY LAYOUT AND PROFILE
		4 of 7	ACCESS ROADS - SOIL EROSION CONTROL PLAN
		5 of 7	ACCESS ROADS - SOIL EROSION CONTROL PLAN
		6 of 7	ACCESS ROADS - SITE RESTORATION PLAN
		7 of 7	ACCESS ROADS - SITE RESTORATION PLAN
AR-SC-063 Proposed Permanent	24-1600-70-28-A/LL113_9-AR-SC-063	1 of 2	ACCESS ROADS - ROADWAY LAYOUT AND PROFILE
		2 of 2	ACCESS ROADS - SOIL EROSION CONTROL PLAN
		3 of 3	ACCESS ROADS - POST CONSTRUCTION STORMWATER MANAGEMENT PLAN
AR-SC-064 Proposed Temporary	24-1600-70-28-A/LL113_9-AR-SC-064	1 of 4	ACCESS ROADS - ROADWAY LAYOUT AND PROFILE
		2 of 4	ACCESS ROADS - ROADWAY LAYOUT AND PROFILE
		3 of 4	ACCESS ROADS - SOIL EROSION CONTROL PLAN
		4 of 4	ACCESS ROADS - SITE RESTORATION PLAN
AR-SC-064.1 Proposed Permanent	24-1600-70-28-A/LL113_9-AR-SC-064.1	1 of 3	ACCESS ROADS - ROADWAY LAYOUT AND PROFILE
		2 of 3	ACCESS ROADS - SOIL EROSION CONTROL PLAN
		3 of 3	ACCESS ROADS - SITE RESTORATION PLAN
AR-SC-065 Proposed Temporary	24-1600-70-28-A/LL113_9-AR-SC-065	1 of 4	ACCESS ROADS - ROADWAY LAYOUT AND PROFILE
		2 of 4	ACCESS ROADS - ROADWAY LAYOUT AND PROFILE
		3 of 4	ACCESS ROADS - SOIL EROSION CONTROL PLAN
		4 of 4	ACCESS ROADS - SITE RESTORATION PLAN
AR-SC-067.1 Proposed Temporary	24-1600-70-28-A/LL113_9-AR-SC-067.1	1 of 4	ACCESS ROADS - ROADWAY LAYOUT AND PROFILE
		2 of 4	ACCESS ROADS - ROADWAY LAYOUT AND PROFILE
		3 of 4	ACCESS ROADS - SOIL EROSION CONTROL PLAN
		4 of 4	ACCESS ROADS - SITE RESTORATION PLAN
AR-SC-067.2 Proposed Temporary	24-1600-70-28-A/LL113_9-AR-SC-067.2	1 of 3	ACCESS ROADS - ROADWAY LAYOUT AND PROFILE
		2 of 3	ACCESS ROADS - SOIL EROSION CONTROL PLAN
		3 of 3	ACCESS ROADS - SITE RESTORATION PLAN
AR-SC-068 Proposed Temporary	24-1600-70-28-A/LL113_9-AR-SC-068	1 of 24	ACCESS ROADS - ROADWAY LAYOUT AND PROFILE
		2 of 24	ACCESS ROADS - ROADWAY LAYOUT AND PROFILE
		3 of 24	ACCESS ROADS - ROADWAY LAYOUT AND PROFILE
		4 of 24	ACCESS ROADS - ROADWAY LAYOUT AND PROFILE
		5 of 24	ACCESS ROADS - ROADWAY LAYOUT AND PROFILE
		6 of 24	ACCESS ROADS - ROADWAY LAYOUT AND PROFILE
		7 of 24	ACCESS ROADS - ROADWAY LAYOUT AND PROFILE
		8 of 24	ACCESS ROADS - ROADWAY LAYOUT AND PROFILE
		9 of 24	ACCESS ROADS - ROADWAY LAYOUT AND PROFILE
		10 of 24	ACCESS ROADS - ROADWAY LAYOUT AND PROFILE
		11 of 24	ACCESS ROADS - ROADWAY LAYOUT AND PROFILE
		12 of 24	ACCESS ROADS - ROADWAY LAYOUT AND PROFILE
		13 of 24	ACCESS ROADS - SOIL EROSION CONTROL PLAN
		14 of 24	ACCESS ROADS - SOIL EROSION CONTROL PLAN
		15 of 24	ACCESS ROADS - SOIL EROSION CONTROL PLAN
		16 of 24	ACCESS ROADS - SOIL EROSION CONTROL PLAN
		17 of 24	ACCESS ROADS - SOIL EROSION CONTROL PLAN
		18 of 24	ACCESS ROADS - SOIL EROSION CONTROL PLAN
		19 of 24	ACCESS ROADS - SITE RESTORATION PLAN
		20 of 24	ACCESS ROADS - SITE RESTORATION PLAN
		21 of 24	ACCESS ROADS - SITE RESTORATION PLAN
		22 of 24	ACCESS ROADS - SITE RESTORATION PLAN
		23 of 24	ACCESS ROADS - SITE RESTORATION PLAN
		24 of 24	ACCESS ROADS - SITE RESTORATION PLAN
AR-SC-069 Proposed Temporary	24-1600-70-28-A/LL113_9-AR-SC-069	1 of 3	ACCESS ROADS - ROADWAY LAYOUT AND PROFILE
		2 of 3	ACCESS ROADS - SOIL EROSION CONTROL PLAN
		3 of 3	ACCESS ROADS - SITE RESTORATION PLAN
AR-SC-070 Proposed Permanent	24-1600-70-28-A/LL113_9-AR-SC-070	1 of 12	ACCESS ROADS - ROADWAY LAYOUT AND PROFILE
		2 of 12	ACCESS ROADS - ROADWAY LAYOUT AND PROFILE
		3 of 12	ACCESS ROADS - ROADWAY LAYOUT AND PROFILE
		4 of 12	ACCESS ROADS - ROADWAY LAYOUT AND PROFILE
		5 of 12	ACCESS ROADS - ROADWAY LAYOUT AND PROFILE
		6 of 12	ACCESS ROADS - ROADWAY LAYOUT AND PROFILE
		7 of 12	ACCESS ROADS - SOIL EROSION CONTROL PLAN
		8 of 12	ACCESS ROADS - SOIL EROSION CONTROL PLAN
		9 of 12	ACCESS ROADS - SOIL EROSION CONTROL PLAN
		10 of 12	ACCESS ROADS - SITE RESTORATION PLAN
		11 of 12	ACCESS ROADS - SITE RESTORATION PLAN
		12 of 12	ACCESS ROADS - SITE RESTORATION PLAN
AR-SC-071 Proposed Temporary	24-1600-70-28-A/LL113_9-AR-SC-071	1 of 7	ACCESS ROADS - ROADWAY LAYOUT AND PROFILE
		2 of 7	ACCESS ROADS - ROADWAY LAYOUT AND PROFILE
		3 of 7	ACCESS ROADS - ROADWAY LAYOUT AND PROFILE
		4 of 7	ACCESS ROADS - SOIL EROSION CONTROL PLAN
		5 of 7	ACCESS ROADS - SOIL EROSION CONTROL PLAN
		6 of 7	ACCESS ROADS - SITE RESTORATION PLAN
		7 of 7	ACCESS ROADS - SITE RESTORATION PLAN