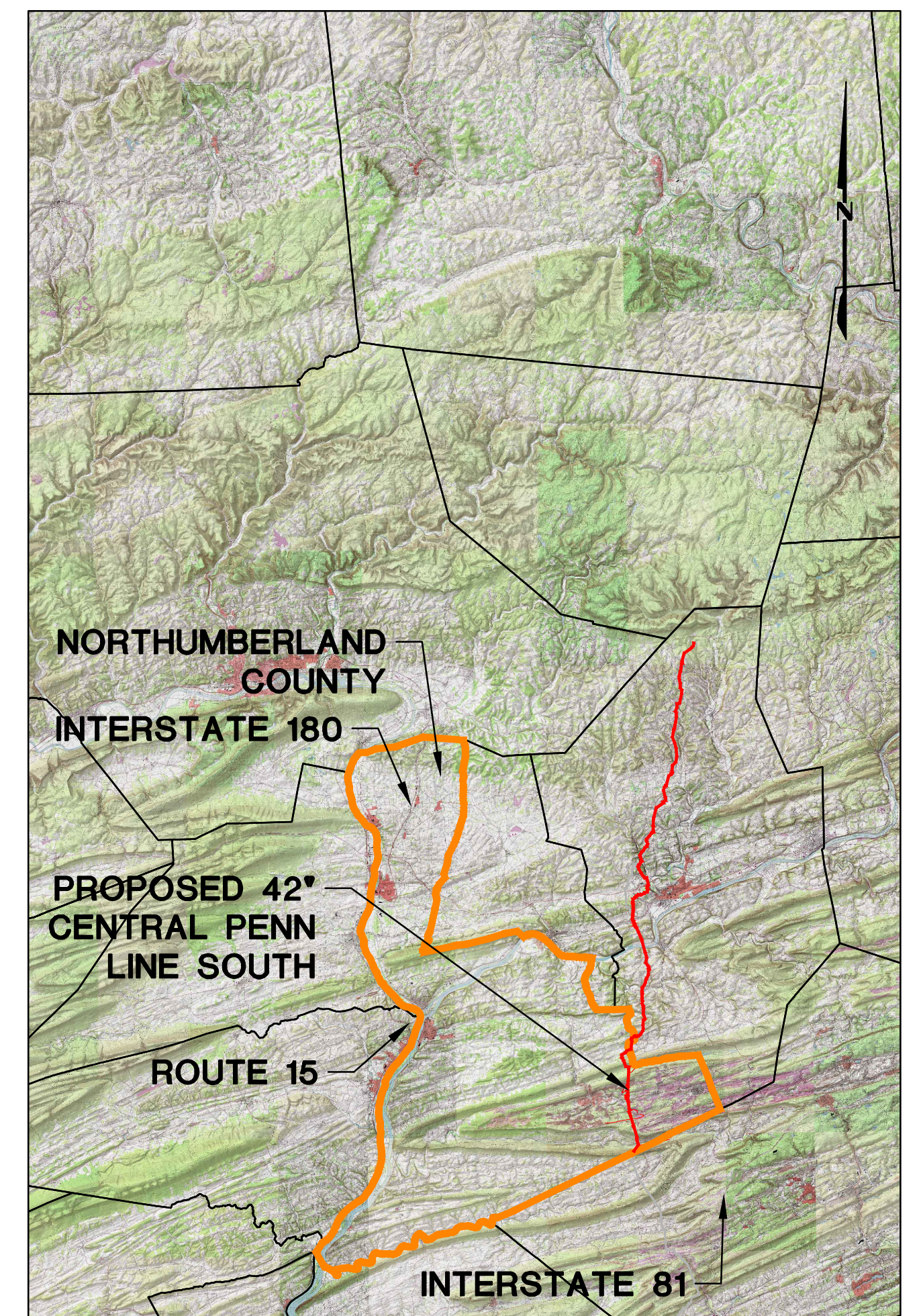
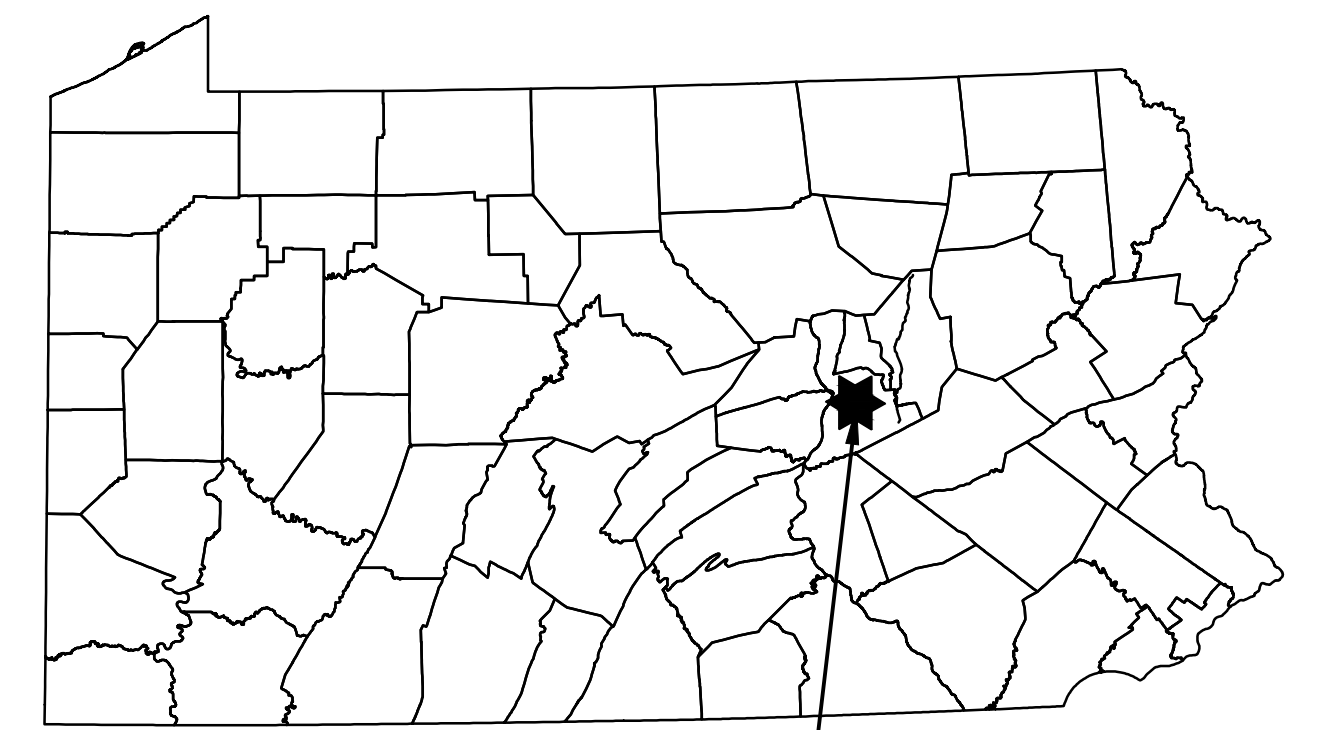


TRANSCONTINENTAL GAS PIPE LINE COMPANY, LLC EROSION & SEDIMENT CONTROL AND LAYOUT PLANS FOR ACCESS ROADS ATLANTIC SUNRISE PROJECT PROPOSED 42" CENTRAL PENN LINE SOUTH RALPHO, COAL, AND EAST CAMERON TOWNSHIPS NORTHUMBERLAND COUNTY, (ELDRED TOWNSHIP, SCHUYLKILL COUNTY, PENNSYLVANIA)



USGS MOUNT CARMEL, SHAMOKIN, TREMONT, AND VALLEY VIEW QUADRANGLES
VICINITY MAP
SCALE: 1"=50,000'



PROJECT
LOCATION



PENNSYLVANIA ACT 287 (1974) AS AMENDED BY PENNSYLVANIA ACT 199 (2004) REQUIRES NO LESS THAN THREE (3) WORKING DAYS AND NO MORE THAN (10) WORKING DAYS NOTICE TO UTILITIES BEFORE YOU EXCAVATE, DRILL, BLAST OR DEMOLISH.

ROAD NAME & TYPE	DRAWING NO.	SHEET NO.	DRAWING NAME
GENERAL OVERALL	24-1600-70-28-A/LL113_9-AR-NO	1 of 4	COVER SHEET REVISED
		2 of 4	LOCATION MAP & ACCESS ROAD INDEX
		3 of 4	TYPICAL SECTIONS
		4 of 4	TYPICAL SECTIONS AND NOTES
AR-NO-075 Proposed Temporary	24-1600-70-28-A/LL113_9-AR-NO-075	1 of 27	ACCESS ROADS - ROADWAY LAYOUT AND PROFILE
		2 of 27	ACCESS ROADS - ROADWAY LAYOUT AND PROFILE
		3 of 27	ACCESS ROADS - ROADWAY LAYOUT AND PROFILE
		4 of 27	ACCESS ROADS - ROADWAY LAYOUT AND PROFILE
		5 of 27	ACCESS ROADS - ROADWAY LAYOUT AND PROFILE
		6 of 27	ACCESS ROADS - ROADWAY LAYOUT AND PROFILE
		7 of 27	ACCESS ROADS - ROADWAY LAYOUT AND PROFILE
		8 of 27	ACCESS ROADS - ROADWAY LAYOUT AND PROFILE
		9 of 27	ACCESS ROADS - ROADWAY LAYOUT AND PROFILE
		10 of 27	ACCESS ROADS - ROADWAY LAYOUT AND PROFILE
		11 of 27	ACCESS ROADS - ROADWAY LAYOUT AND PROFILE
		12 of 27	ACCESS ROADS - ROADWAY LAYOUT AND PROFILE
		13 of 27	ACCESS ROADS - ROADWAY LAYOUT AND PROFILE
		14 of 27	ACCESS ROADS - SOIL EROSION CONTROL PLAN REVISED
		15 of 27	ACCESS ROADS - SOIL EROSION CONTROL PLAN
		16 of 27	ACCESS ROADS - SOIL EROSION CONTROL PLAN
		17 of 27	ACCESS ROADS - SOIL EROSION CONTROL PLAN
18 of 27	ACCESS ROADS - SOIL EROSION CONTROL PLAN		
19 of 27	ACCESS ROADS - SOIL EROSION CONTROL PLAN		
20 of 27	ACCESS ROADS - SOIL EROSION CONTROL PLAN		
21 of 27	ACCESS ROADS - SITE RESTORATION PLAN		
22 of 27	ACCESS ROADS - SITE RESTORATION PLAN		
23 of 27	ACCESS ROADS - SITE RESTORATION PLAN		
24 of 27	ACCESS ROADS - SITE RESTORATION PLAN		
25 of 27	ACCESS ROADS - SITE RESTORATION PLAN		
26 of 27	ACCESS ROADS - SITE RESTORATION PLAN		
27 of 27	ACCESS ROADS - SITE RESTORATION PLAN		
AR-NO-076 Proposed Permanent	24-1600-70-28-A/LL113_9-AR-NO-076	1 of 11	ACCESS ROADS - ROADWAY LAYOUT AND PROFILE
		2 of 11	ACCESS ROADS - ROADWAY LAYOUT AND PROFILE
		3 of 11	ACCESS ROADS - ROADWAY LAYOUT AND PROFILE
		4 of 11	ACCESS ROADS - ROADWAY LAYOUT AND PROFILE
		5 of 11	ACCESS ROADS - ROADWAY LAYOUT AND PROFILE
		6 of 11	ACCESS ROADS - ROADWAY LAYOUT AND PROFILE
		7 of 11	ACCESS ROADS - ROADWAY LAYOUT AND PROFILE
		8 of 11	ACCESS ROADS - ROADWAY LAYOUT AND PROFILE
		9 of 11	ACCESS ROADS - ROADWAY LAYOUT AND PROFILE
		10 of 11	ACCESS ROADS - ROADWAY LAYOUT AND PROFILE
		11 of 11	ACCESS ROADS - ROADWAY LAYOUT AND PROFILE
AR-NO-076.1 Proposed Temporary	24-1600-70-28-A/LL113_9-AR-NO-076.1	1 of 15	ACCESS ROADS - ROADWAY LAYOUT AND PROFILE
		2 of 15	ACCESS ROADS - ROADWAY LAYOUT AND PROFILE
		3 of 15	ACCESS ROADS - ROADWAY LAYOUT AND PROFILE
		4 of 15	ACCESS ROADS - ROADWAY LAYOUT AND PROFILE
		5 of 15	ACCESS ROADS - ROADWAY LAYOUT AND PROFILE
		6 of 15	ACCESS ROADS - ROADWAY LAYOUT AND PROFILE
		7 of 15	ACCESS ROADS - ROADWAY LAYOUT AND PROFILE
		8 of 15	ACCESS ROADS - SOIL EROSION CONTROL PLAN REVISED
		9 of 15	ACCESS ROADS - SOIL EROSION CONTROL PLAN
		10 of 15	ACCESS ROADS - SOIL EROSION CONTROL PLAN
		11 of 15	ACCESS ROADS - SOIL EROSION CONTROL PLAN
		12 of 15	ACCESS ROADS - SITE RESTORATION PLAN REVISED
		13 of 15	ACCESS ROADS - SITE RESTORATION PLAN
		14 of 15	ACCESS ROADS - SITE RESTORATION PLAN
		15 of 15	ACCESS ROADS - SITE RESTORATION PLAN
AR-NO-077 Proposed Temporary	24-1600-70-28-A/LL113_9-AR-NO-077	1 of 4	ACCESS ROADS - ROADWAY LAYOUT AND PROFILE
		2 of 4	ACCESS ROADS - ROADWAY LAYOUT AND PROFILE
		3 of 4	ACCESS ROADS - SOIL EROSION CONTROL PLAN
		4 of 4	ACCESS ROADS - SITE RESTORATION PLAN
AR-NO-078.1 Proposed Temporary	24-1600-70-28-A/LL113_9-AR-NO-078.1	1 of 8	ACCESS ROADS - ROADWAY LAYOUT AND PROFILE
		2 of 8	ACCESS ROADS - ROADWAY LAYOUT AND PROFILE
		3 of 8	ACCESS ROADS - ROADWAY LAYOUT AND PROFILE
		4 of 8	ACCESS ROADS - ROADWAY LAYOUT AND PROFILE
		5 of 8	ACCESS ROADS - SOIL EROSION CONTROL PLAN REVISED
		6 of 8	ACCESS ROADS - SOIL EROSION CONTROL PLAN
		7 of 8	ACCESS ROADS - SITE RESTORATION PLAN
		8 of 8	ACCESS ROADS - SITE RESTORATION PLAN
AR-NO-079 Proposed Permanent	24-1600-70-28-A/LL113_9-AR-NO-079	1 of 3	ACCESS ROADS - ROADWAY LAYOUT AND PROFILE
		2 of 3	ACCESS ROADS - SOIL EROSION CONTROL PLAN
		3 of 3	ACCESS ROADS - SITE RESTORATION PLAN
AR-NO-081.1 Proposed Temporary	24-1600-70-28-A/LL113_9-AR-NO-081.1	1 of 4	ACCESS ROADS - ROADWAY LAYOUT AND PROFILE
		2 of 4	ACCESS ROADS - ROADWAY LAYOUT AND PROFILE
		3 of 4	ACCESS ROADS - SOIL EROSION CONTROL PLAN
		4 of 4	ACCESS ROADS - SITE RESTORATION PLAN
AR-NO-082 Proposed Temporary	24-1600-70-28-A/LL113_9-AR-NO-082	1 of 11	ACCESS ROADS - ROADWAY LAYOUT AND PROFILE
		2 of 11	ACCESS ROADS - ROADWAY LAYOUT AND PROFILE
		3 of 11	ACCESS ROADS - ROADWAY LAYOUT AND PROFILE
		4 of 11	ACCESS ROADS - ROADWAY LAYOUT AND PROFILE
		5 of 11	ACCESS ROADS - ROADWAY LAYOUT AND PROFILE
		6 of 11	ACCESS ROADS - SOIL EROSION CONTROL PLAN REVISED
		7 of 11	ACCESS ROADS - SOIL EROSION CONTROL PLAN
		8 of 11	ACCESS ROADS - SOIL EROSION CONTROL PLAN
		9 of 11	ACCESS ROADS - SITE RESTORATION PLAN
		10 of 11	ACCESS ROADS - SITE RESTORATION PLAN
		11 of 11	ACCESS ROADS - SITE RESTORATION PLAN
AR-NO-082.1 Proposed Temporary	24-1600-70-28-A/LL113_9-AR-NO-082.1	1 of 8	ACCESS ROADS - ROADWAY LAYOUT AND PROFILE
		2 of 8	ACCESS ROADS - ROADWAY LAYOUT AND PROFILE
		3 of 8	ACCESS ROADS - ROADWAY LAYOUT AND PROFILE
		4 of 8	ACCESS ROADS - ROADWAY LAYOUT AND PROFILE
		5 of 8	ACCESS ROADS - SOIL EROSION CONTROL PLAN REVISED
		6 of 8	ACCESS ROADS - SOIL EROSION CONTROL PLAN
		7 of 8	ACCESS ROADS - SITE RESTORATION PLAN
		8 of 8	ACCESS ROADS - SITE RESTORATION PLAN
AR-NO-084 Proposed Permanent	24-1600-70-28-A/LL113_9-AR-NO-084	1 of 7	ACCESS ROADS - ROADWAY LAYOUT AND PROFILE
		2 of 7	ACCESS ROADS - ROADWAY LAYOUT AND PROFILE
		3 of 7	ACCESS ROADS - ROADWAY LAYOUT AND PROFILE
		4 of 7	ACCESS ROADS - SOIL EROSION CONTROL PLAN
		5 of 7	ACCESS ROADS - SOIL EROSION CONTROL PLAN
		6 of 7	ACCESS ROADS - SITE RESTORATION PLAN
		7 of 7	ACCESS ROADS - SITE RESTORATION PLAN
AR-CO-085.1.3 Proposed Permanent	24-1600-70-28-A/LL113_9-AR-CO-085.1.3	1 of 2	ACCESS ROADS - ROADWAY LAYOUT AND PROFILE
		2 of 2	ACCESS ROADS - SOIL EROSION CONTROL PLAN
		3 of 3	ACCESS ROADS - POST CONSTRUCTION STORMWATER MANAGEMENT PLAN

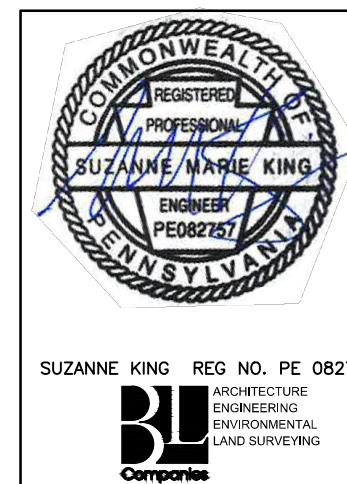
NOTE: ROADS THAT ARE CROSSED OUT IN THE ABOVE TABLE HAVE BEEN REMOVED FROM THE PROJECT.

ABBREVIATIONS			
AASHTO	AMERICAN ASSOCIATION OF STATE HIGHWAY AND TRANSPORTATION OFFICIALS	INV	INVERT
		L	LENGTH, LEFT
		LOD	LIMIT OF DISTURBANCE
ABACT	ANTIDEGRADATION BEST AVAILABLE COMBINATION OF TECHNOLOGIES	MF	MIGRATORY FISHES
		MLV	MAIN LINE VALVE
APPROX.	APPROXIMATE	N/A	NOT APPLICABLE
AR	ACCESS ROAD	PADEP	PENNSYLVANIA DEPARTMENT OF ENVIRONMENTAL PROTECTION
AC	ACRE/ACRES		
BMP	BEST MANAGEMENT PRACTICES	PR	PROPOSED
CWF	COLDWATER FISHES	R	RIGHT
D	DEPTH	RCP	REINFORCED CONCRETE PIPE
D.I.P.	DUCTILE IRON PIPE	STA	STATION
E&S	EROSION AND SEDIMENT CONTROL	TGPL	TRANSCONTINENTAL GAS PIPE LINE
ESGP-2	EROSION AND SEDIMENT CONTROL	TSF	TROUT STOCKED FISHERY
	GENERAL PERMIT - 2	TYP.	TYPICAL
EV	EXCEPTIONAL VALUE	UNK	UNKNOWN
EX	EXISTING	UNT	UNNAMED TRIBUTARY
GTD	GRADE TO DRAIN	V	VERTICAL
H	HORIZONTAL	W	WIDTH
HQ	HIGH QUALITY	WWF	WARMWATER FISHES

SOIL TYPES AND LIMITATIONS		LIMITATIONS															
MAP UNIT NAME	MAP UNIT DESIGNATION	CUTBANKS CAVE	CORROSIVE TO CONCRETE/STEEL	DROUGHT	EASILY ERODIBLE	FLOODING	DEPTH TO SATURATED ZONE / SEASONAL HIGH WATER TABLE	HYDRIC / HYDRIC INCLUSIONS	LOW STRENGTH / LANDSLIDE PRONE	SLOW PERCOLATION	PIPING	POOR SOURCE OF TOPSOIL	FROST ACTION	SHRINK - SWELL	POTENTIAL SINKHOLE	PONDING	WETNESS
AbB	ALBRIGHTS SILT LOAM, 3 TO 8 PERCENT SLOPES	X	C/S	X	X	X	X	X	X	X	X	X	X	X	X	X	X
BxH	BUCHANAN VERY STONY LOAM, 0 TO 8 PERCENT SLOPES	X	C/S	X	X	X	X	X	X	X	X	X	X	X	X	X	X
BxD	BUCHANAN VERY STONY LOAM, 8 TO 25 PERCENT SLOPES	X	C/S	X	X	X	X	X	X	X	X	X	X	X	X	X	X
CaB	CALVIN-KLINESVILLE SHALY SILT LOAMS, 3 TO 8 PERCENT SLOPES	X	C/S	X	X	X	X	X	X	X	X	X	X	X	X	X	X
CaC	CALVIN-KLINESVILLE SHALY SILT LOAMS, 8 TO 15 PERCENT SLOPES	X	C/S	X	X	X	X	X	X	X	X	X	X	X	X	X	X
DeF	DEKALB EXTREMELY STONY SANDY LOAM, STEEP	X	C	X	X	X	X	X	X	X	X	X	X	X	X	X	X
DMF	DEKALB AND LEHEW EXTREMELY STONY SOILS, STEEP	X	C	X	X	X	X	X	X	X	X	X	X	X	X	X	X
Du	DUMPS, MINE	-	-	-	-	-	-	-	-	-	-	-	-	-	-	-	-
HuB	HAZLETON AND CLYMER EXTREMELY STONY SANDY LOAMS, 0 TO 8 PERCENT SLOPES	X	C	X	X	X	X	X	X	X	X	X	X	X	X	X	X
HuD	HAZLETON AND CLYMER EXTREMELY STONY SANDY LOAMS, 8 TO 25 PERCENT SLOPES	X	C	X	X	X	X	X	X	X	X	X	X	X	X	X	X
HuF	HAZLETON AND CLYMER EXTREMELY STONY SANDY LOAMS, 25 TO 80 PERCENT SLOPES	X	C	X	X	X	X	X	X	X	X	X	X	X	X	X	X
KvB	KEDRON VERY STONY SILT LOAM, 3 TO 8 PERCENT SLOPES	X	C/S	X	X	X	X	X	X	X	X	X	X	X	X	X	X
KvC	KEDRON VERY STONY SILT LOAM, 8 TO 25 PERCENT SLOPES	X	C/S	X	X	X	X	X	X	X	X	X	X	X	X	X	X
LdC	LADIG EXTREMELY STONY LOAM, 8 TO 25 PERCENT SLOPES	X	C/S	X	X	X	X	X	X	X	X	X	X	X	X	X	X
LdD	LADIG AND MECKESVILLE EXTREMELY STONY SOILS, 8 TO 25 PERCENT SLOPES	X	C/S	X	X	X	X	X	X	X	X	X	X	X	X	X	X
MkB	MECKESVILLE VERY STONY LOAM, 3 TO 8 PERCENT SLOPES	X	C/S	X	X	X	X	X	X	X	X	X	X	X	X	X	X
MkC	MECKESVILLE SILT LOAM, 8 TO 15 PERCENT SLOPES	X	C/S	X	X	X	X	X	X	X	X	X	X	X	X	X	X
SmB	SHELMADINE VERY STONY SILT LOAM, 0 TO 8 PERCENT SLOPES	X	C/S	X	X	X	X	X	X	X	X	X	X	X	X	X	X
Ur	UDIFLUVENTS, COAL OVERWASH, 0 TO 3 PERCENT SLOPES	X	C/S	X	X	X	X	X	X	X	X	X	X	X	X	X	X
Uh	UDORTHERENTS, SANDSTONE AND SHALE, 3 TO 8 PERCENT SLOPES	X	C/S	X	X	X	X	X	X	X	X	X	X	X	X	X	X
W	WATER	-	-	-	-	-	-	-	-	-	-	-	-	-	-	-	-

LEGEND
 X APPLIES TO SOIL
 S CORROSIVE TO STEEL
 C CORROSIVE TO CONCRETE
 C/S CORROSIVE TO STEEL AND CONCRETE

ENGINEER OF RECORD
 BL COMPANIES
 4242 CARLISLE PIKE, SUITE 260
 CAMP HILL, PA 17011
 P:717-651-9850
 F:717-651-9858



REVISIONS			
NO.	DATE	BY	DESCRIPTION
0	07/17/2015	BL	ISSUED FOR PADEP SUBMITTAL
1	12/02/2015	BL	ISSUED FOR PADEP RESUBMITTAL
2	02/10/2016	BL	PADEP TECHNICAL DEFICIENCY RESPONSE #1
3	APRIL 2017	BL	PADEP TECHNICAL DEFICIENCY RESPONSE #2
4	AUG. 2017	BL	PADEP TECHNICAL DEFICIENCY RESPONSE #3

TRANSCONTINENTAL GAS PIPE LINE COMPANY, LLC			
ATLANTIC SUNRISE PROJECT - PROPOSED 42" CENTRAL PENN LINE SOUTH			
ACCESS ROADS			
NORTHUMBERLAND COUNTY, PENNSYLVANIA			
COVER SHEET			
DRAWN BY:	OLC/MS	DATE:	4/2015
ISSUED FOR:	BL	DATE:	08/12/15
CHECKED BY:	DAK	DATE:	07/07/15
APPROVED BY:	SMK	DATE:	07/07/15
NO.:	W01161503	DRAWING NUMBER:	24-1600-70-28-A/LL113_9-AR-NO
DATE:	4/2015	ISSUED FOR:	BL
REVISION:	4	REVISION:	4
SHEET:	1	SHEET:	1

