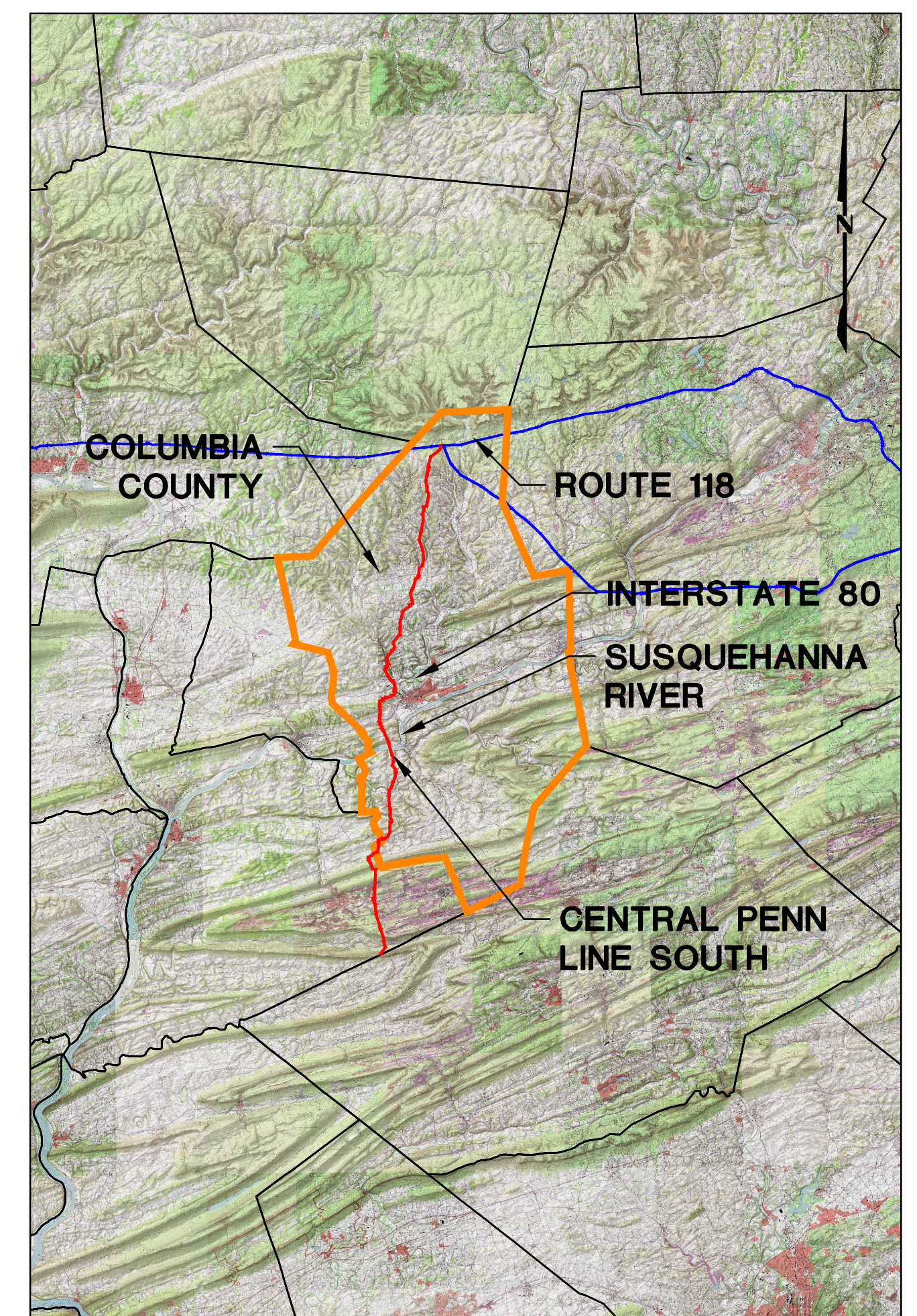


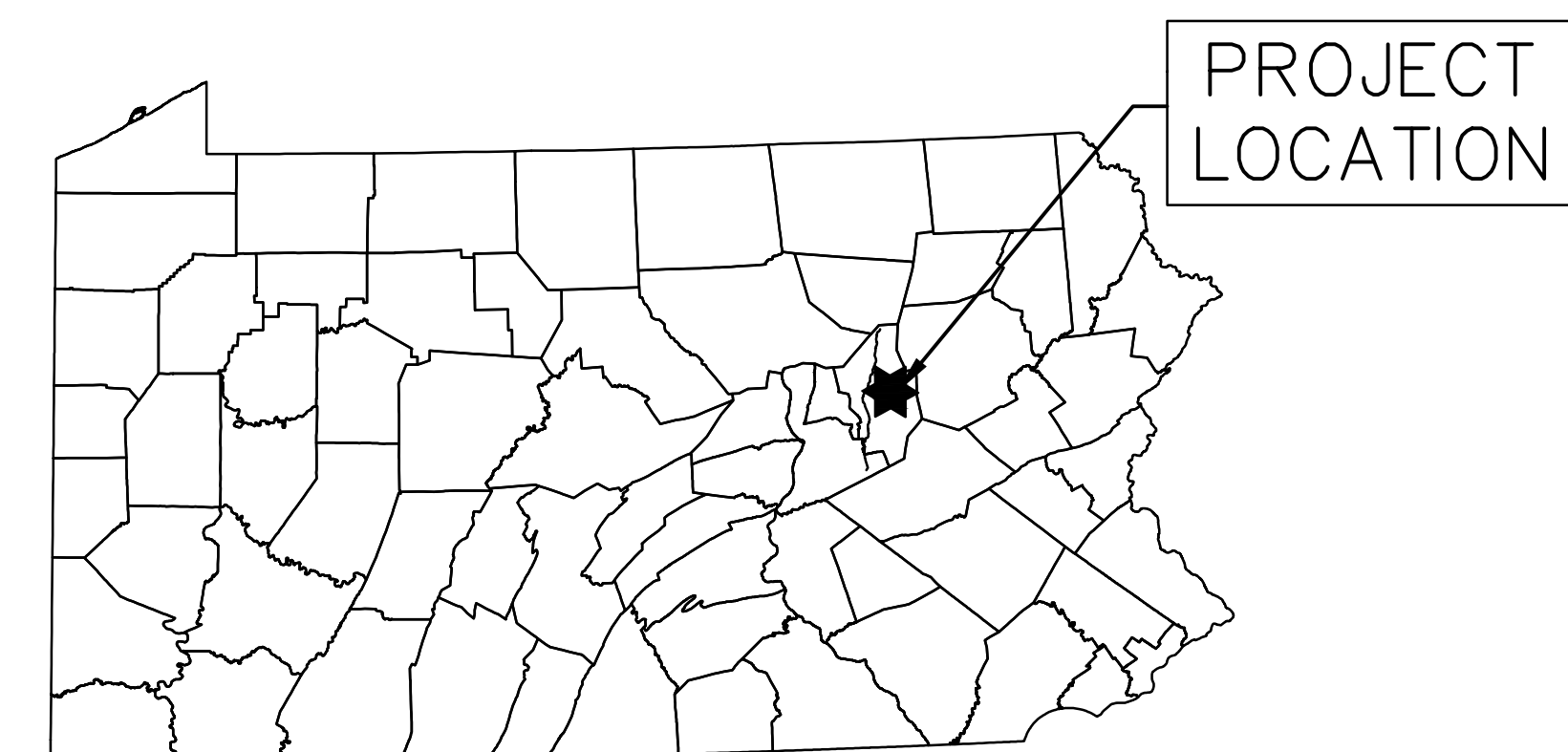
# TRANSCONTINENTAL GAS PIPE LINE COMPANY, LLC EROSION & SEDIMENT CONTROL AND LAYOUT PLANS FOR ACCESS ROADS ATLANTIC SUNRISE PROJECT PROPOSED 42" CENTRAL PENN LINE SOUTH

EAST CAMERON, COAL, RALPHO, CLEVELAND, FRANKLIN,  
MONTOUR, HEMLOCK, MT PLEASANT, GREENWOOD, AND  
JACKSON TOWNSHIPS  
COLUMBIA COUNTY, PENNSYLVANIA



**VICINITY MAP**

SCALE: 1"=50,000'



PROJECT  
LOCATION

ROAD NAME & TYPE	DRAWING NO.	SHEET NO.	DRAWING NAME
GENERAL OVERALL	24-1600-70-28-A/LL113_9-AR-CO	1 of 4	COVER SHEET
		2 of 4	LOCATION MAP AND ACCESS ROAD INDEX
		3 of 4	TYPICAL SECTIONS
		4 of 4	TYPICAL SECTIONS AND NOTES
AR-CO-095 <i>Proposed Temporary</i>	24-1601-70-28-A/LL113_9-AR-CO-095	1 of 3	ACCESS ROADS - ROADWAY LAYOUT AND PROFILE
		2 of 3	ACCESS ROADS - SOIL EROSION CONTROL PLAN
		3 of 3	ACCESS ROADS - POST CONSTRUCTION STORM WATER MANAGEMENT PLAN
AR-CO-091 <i>Proposed Temporary</i>	24-1600-70-28-A/LL113_9-AR-CO-091	1 of 7	ACCESS ROADS - ROADWAY LAYOUT AND PROFILE
		2 of 7	ACCESS ROADS - ROADWAY LAYOUT AND PROFILE
		3 of 7	ACCESS ROADS - ROADWAY LAYOUT AND PROFILE
		4 of 7	ACCESS ROADS - SOIL EROSION CONTROL PLAN
		5 of 7	ACCESS ROADS - SOIL EROSION CONTROL PLAN
		6 of 7	ACCESS ROADS - SITE RESTORATION PLAN
		7 of 7	ACCESS ROADS - SITE RESTORATION PLAN
AR-CO-093 <i>Proposed Temporary</i>	24-1600-70-28-A/LL113_9-AR-CO-093	1 of 4	ACCESS ROADS - ROADWAY LAYOUT AND PROFILE
		2 of 4	ACCESS ROADS - ROADWAY LAYOUT AND PROFILE
		3 of 4	ACCESS ROADS - SOIL EROSION CONTROL PLAN
		4 of 4	ACCESS ROADS - SITE RESTORATION PLAN
AR-CO-094.1 <i>Proposed Temporary</i>	24-1600-70-28-A/LL113_9-AR-CO-094.1	1 of 7	ACCESS ROADS - ROADWAY LAYOUT AND PROFILE
		2 of 7	ACCESS ROADS - ROADWAY LAYOUT AND PROFILE
		3 of 7	ACCESS ROADS - ROADWAY LAYOUT AND PROFILE
		4 of 7	ACCESS ROADS - SOIL EROSION CONTROL PLAN
		5 of 7	ACCESS ROADS - SOIL EROSION CONTROL PLAN
		6 of 7	ACCESS ROADS - SITE RESTORATION PLAN
		7 of 7	ACCESS ROADS - SITE RESTORATION PLAN
AR-CO-093.1 <i>Proposed Temporary</i>	24-1600-70-28-A/LL113_9-AR-CO-093.1	1 of 3	ACCESS ROADS - ROADWAY LAYOUT AND PROFILE
		2 of 3	ACCESS ROADS - SOIL EROSION CONTROL PLAN
		3 of 3	ACCESS ROADS - SITE RESTORATION PLAN
AR-CO-094.1.1 <i>Proposed Temporary</i>	24-1600-70-28-A/LL113_9-AR-CO-094.1.1	1 of 3	ACCESS ROADS - ROADWAY LAYOUT AND PROFILE
		2 of 3	ACCESS ROADS - SOIL EROSION CONTROL PLAN
		3 of 3	ACCESS ROADS - SITE RESTORATION PLAN
AR-CO-095 <i>Proposed Temporary</i>	24-1600-70-28-A/LL113_9-AR-CO-095	1 of 8	ACCESS ROADS - ROADWAY LAYOUT AND PROFILE
		2 of 8	ACCESS ROADS - ROADWAY LAYOUT AND PROFILE
		3 of 8	ACCESS ROADS - ROADWAY LAYOUT AND PROFILE
		4 of 8	ACCESS ROADS - ROADWAY LAYOUT AND PROFILE
		5 of 8	ACCESS ROADS - SOIL EROSION CONTROL PLAN
		6 of 8	ACCESS ROADS - SOIL EROSION CONTROL PLAN
		7 of 8	ACCESS ROADS - SITE RESTORATION PLAN
		8 of 8	ACCESS ROADS - SITE RESTORATION PLAN
AR-CO-095.1.1.1 <i>Proposed Permanent</i>	24-1600-70-28-A/LL113_9-AR-CO-095.1.1.1	1 of 3	ACCESS ROADS - ROADWAY LAYOUT AND PROFILE
		2 of 3	ACCESS ROADS - SOIL EROSION CONTROL & SITE RESTORATION PLAN
		3 of 3	ACCESS ROADS - POST CONSTRUCTION STORM WATER MANAGEMENT PLAN
AR-CO-095.1.1.2 <i>Proposed Permanent</i>	24-1600-70-28-A/LL113_9-AR-CO-095.1.1.2	1 of 2	ACCESS ROADS - ROADWAY LAYOUT AND PROFILE
		2 of 2	ACCESS ROADS - SOIL EROSION CONTROL & SITE RESTORATION PLAN
		3 of 3	ACCESS ROADS - POST CONSTRUCTION STORM WATER MANAGEMENT PLAN
AR-CO-094.1.2 <i>Proposed Temporary</i>	24-1600-70-28-A/LL113_9-AR-CO-094.1.2	1 of 4	ACCESS ROADS - ROADWAY LAYOUT AND PROFILE
		2 of 4	ACCESS ROADS - ROADWAY LAYOUT AND PROFILE
		3 of 4	ACCESS ROADS - SOIL EROSION CONTROL PLAN
		4 of 4	ACCESS ROADS - SITE RESTORATION PLAN
AR-CO-094.1.3 <i>Proposed Temporary</i>	24-1600-70-28-A/LL113_9-AR-CO-094.1.3	1 of 3	ACCESS ROADS - ROADWAY LAYOUT AND PROFILE
		2 of 3	ACCESS ROADS - SOIL EROSION CONTROL PLAN
		3 of 3	ACCESS ROADS - SITE RESTORATION PLAN
AR-CO-095.1.1.3 <i>Proposed Permanent</i>	24-1600-70-28-A/LL113_9-AR-CO-095.1.1.3	1 of 2	ACCESS ROADS - ROADWAY LAYOUT AND PROFILE
		2 of 2	ACCESS ROADS - SOIL EROSION CONTROL & SITE RESTORATION PLAN
AR-CO-095.4 <i>Proposed Permanent</i>	24-1600-70-28-A/LL113_9-AR-CO-095.4	1 of 1	ACCESS ROADS - SOIL EROSION CONTROL PLAN
AR-CO-096.1 <i>Proposed Temporary</i>	24-1600-70-28-A/LL113_9-AR-CO-096.1	1 of 3	ACCESS ROADS - ROADWAY LAYOUT AND PROFILE
		2 of 3	ACCESS ROADS - SOIL EROSION CONTROL PLAN
		3 of 3	ACCESS ROADS - SITE RESTORATION PLAN
AR-CO-096.2 <i>Proposed Temporary</i>	24-1600-70-28-A/LL113_9-AR-CO-096.2	1 of 3	ACCESS ROADS - ROADWAY LAYOUT AND PROFILE
		2 of 3	ACCESS ROADS - SOIL EROSION CONTROL PLAN
		3 of 3	ACCESS ROADS - SITE RESTORATION PLAN
AR-CO-097.1 <i>Proposed Temporary</i>	24-1600-70-28-A/LL113_9-AR-CO-097.1	1 of 4	ACCESS ROADS - ROADWAY LAYOUT AND PROFILE
		2 of 4	ACCESS ROADS - ROADWAY LAYOUT AND PROFILE
		3 of 4	ACCESS ROADS - SOIL EROSION CONTROL PLAN
		4 of 4	ACCESS ROADS - SITE RESTORATION PLAN
AR-CO-097.1.1 <i>Proposed Permanent</i>	24-1600-70-28-A/LL113_9-AR-CO-097.1.1	1 of 2	ACCESS ROADS - ROADWAY LAYOUT AND PROFILE
		2 of 2	ACCESS ROADS - SOIL EROSION CONTROL & SITE RESTORATION PLAN
AR-CO-097.3 <i>Proposed Temporary</i>	24-1600-70-28-A/LL113_9-AR-CO-097.3	1 of 3	ACCESS ROADS - ROADWAY LAYOUT AND PROFILE
		2 of 3	ACCESS ROADS - SOIL EROSION CONTROL PLAN
		3 of 3	ACCESS ROADS - SITE RESTORATION PLAN
AR-CO-098.1 <i>Proposed Temporary</i>	24-1600-70-28-A/LL113_9-AR-CO-098.1	1 of 3	ACCESS ROADS - ROADWAY LAYOUT AND PROFILE
		2 of 3	ACCESS ROADS - SOIL EROSION CONTROL PLAN
		3 of 3	ACCESS ROADS - SITE RESTORATION PLAN
AR-CO-098.2 <i>Proposed Temporary</i>	24-1600-70-28-A/LL113_9-AR-CO-098.2	1 of 4	ACCESS ROADS - ROADWAY LAYOUT AND PROFILE
		2 of 4	ACCESS ROADS - ROADWAY LAYOUT AND PROFILE
		3 of 4	ACCESS ROADS - SOIL EROSION CONTROL PLAN
		4 of 4	ACCESS ROADS - SITE RESTORATION PLAN
AR-CO-96 <i>Proposed Temporary</i>	24-1600-70-28-A/LL113_9-AR-CO-96	1 of 3	ACCESS ROADS - ROADWAY LAYOUT AND PROFILE
		2 of 3	ACCESS ROADS - SOIL EROSION CONTROL PLAN
		3 of 3	ACCESS ROADS - POST CONSTRUCTION STORM WATER MANAGEMENT PLAN
AR-CO-099 <i>Proposed Temporary</i>	24-1600-70-28-A/LL113_9-AR-CO-099	1 of 3	ACCESS ROADS - ROADWAY LAYOUT AND PROFILE
		2 of 3	ACCESS ROADS - SOIL EROSION CONTROL PLAN
		3 of 3	ACCESS ROADS - SITE RESTORATION PLAN
AR-CO-100 <i>Proposed Temporary</i>	24-1600-70-28-A/LL113_9-AR-CO-100	1 of 7	ACCESS ROADS - ROADWAY LAYOUT AND PROFILE
		2 of 7	ACCESS ROADS - ROADWAY LAYOUT AND PROFILE
		3 of 7	ACCESS ROADS - ROADWAY LAYOUT AND PROFILE
		4 of 7	ACCESS ROADS - SOIL EROSION CONTROL PLAN
		5 of 7	ACCESS ROADS - SOIL EROSION CONTROL PLAN
		6 of 7	ACCESS ROADS - SITE RESTORATION PLAN
		7 of 7	ACCESS ROADS - SITE RESTORATION PLAN
AR-CO-101 <i>Proposed Temporary</i>	24-1600-70-28-A/LL113_9-AR-CO-101	1 of 3	ACCESS ROADS - ROADWAY LAYOUT AND PROFILE
		2 of 3	ACCESS ROADS - SOIL EROSION CONTROL PLAN
		3 of 3	ACCESS ROADS - SITE RESTORATION PLAN
AR-CO-102 <i>Proposed Temporary</i>	24-1600-70-28-A/LL113_9-AR-CO-102	1 of 3	ACCESS ROADS - ROADWAY LAYOUT AND PROFILE
		2 of 3	ACCESS ROADS - SOIL EROSION CONTROL PLAN
		3 of 3	ACCESS ROADS - SITE RESTORATION PLAN
AR-CO-103 <i>Proposed Temporary</i>	24-1600-70-28-A/LL113_9-AR-CO-103	1 of 7	ACCESS ROADS - ROADWAY LAYOUT AND PROFILE
		2 of 7	ACCESS ROADS - ROADWAY LAYOUT AND PROFILE
		3 of 7	ACCESS ROADS - ROADWAY LAYOUT AND PROFILE
		4 of 7	ACCESS ROADS - SOIL EROSION CONTROL PLAN
		5 of 7	ACCESS ROADS - SOIL EROSION CONTROL PLAN
		6 of 7	ACCESS ROADS - SITE RESTORATION PLAN
		7 of 7	ACCESS ROADS - SITE RESTORATION PLAN
AR-CO-106 <i>Proposed Temporary</i>	24-1600-70-28-A/LL113_9-AR-CO-106	1 of 4	ACCESS ROADS - ROADWAY LAYOUT AND PROFILE
		2 of 4	ACCESS ROADS - ROADWAY LAYOUT AND PROFILE
		3 of 4	ACCESS ROADS - SOIL EROSION CONTROL PLAN
		4 of 4	ACCESS ROADS - SITE RESTORATION PLAN
AR-CO-106.2 <i>Proposed Temporary</i>	24-1600-70-28-A/LL113_9-AR-CO-106.2	1 of 3	ACCESS ROADS - ROADWAY LAYOUT AND PROFILE
		2 of 3	ACCESS ROADS - SOIL EROSION CONTROL PLAN
		3 of 3	ACCESS ROADS - SITE RESTORATION PLAN
AR-CO-106.3 <i>Proposed Temporary</i>	24-1600-70-28-A/LL113_9-AR-CO-106.3	1 of 3	ACCESS ROADS - ROADWAY LAYOUT AND PROFILE
		2 of 3	ACCESS ROADS - SOIL EROSION CONTROL PLAN
		3 of 3	ACCESS ROADS - SITE RESTORATION PLAN

**SOIL TYPES AND LIMITATIONS**

MAP UNIT NAME	MAP UNIT DESIGNATION	CUTBANKS GAVE	CORROSIVE TO CONCRETE/STEEL	DROUGHTY	EASILY ERODIBLE	FLOODING	DEPTH TO SATURATED ZONE/SEASONAL HIGH WATER TABLE	HYDROIC/HYDROIC INCLUSIONS	LOW STRENGTH / LANDSLIDE PRONE	SLOW PERCOLATION	PIPING	POOR SOURCE OF TOP SOIL	FROST ACTION	SHRINK - SWELL	POTENTIAL SINKHOLE	PONDING	WETNESS
ChA	CHENANGO SILT LOAM, 0 TO 3 PERCENT SLOPES	X	C	X			X	X			X	X	X				
HhB2	HARTLETON CHANNERY SILT LOAM, 3 TO 12 PERCENT SLOPES, MODERATELY ERODED	X	C	X							X	X	X				
HhC2	HARTLETON CHANNERY SILT LOAM, 12 TO 20 PERCENT SLOPES, MODERATELY ERODED	X	C	X							X	X	X				
HhD3	HARTLETON CHANNERY SILT LOAM, 20 TO 35 PERCENT SLOPES, SEVERELY ERODED	X	C	X							X	X	X				
KaB2	KLINESVILLE SHALY SILT LOAM, 3 TO 12 PERCENT SLOPES, MODERATELY ERODED	X	C/S	X	X			X			X	X	X				
KaC3	KLINESVILLE SHALY SILT LOAM, 12 TO 20 PERCENT SLOPES, SEVERELY ERODED	X	C/S	X	X			X			X	X	X				
KaD3	KLINESVILLE SHALY SILT LOAM, 20 TO 35 PERCENT SLOPES, SEVERELY ERODED	X	C/S	X	X			X			X	X	X				
LgB	LAWRENCEVILLE AND DUNCANNON SILT LOAMS, 3 TO 8 PERCENT SLOPES	X	C/S	X			X	X			X	X	X				X
LkB2	LECK KILL CHANNERY SILT LOAM, 3 TO 12 PERCENT SLOPES, MODERATELY ERODED	X	C	X							X	X	X				X
LkC2	LECK KILL CHANNERY SILT LOAM, 12 TO 20 PERCENT SLOPES, MODERATELY ERODED	X	C	X							X	X	X				X
LkC3	LECK KILL CHANNERY SILT LOAM, 12 TO 20 PERCENT SLOPES, SEVERELY ERODED	X	C	X							X	X	X				X
LkD3	LECK KILL CHANNERY SILT LOAM, 20 TO 35 PERCENT SLOPES, SEVERELY ERODED	X	C	X							X	X	X				X
Md	MIDDLEBURY SILT LOAM, 0-3 PERCENT SLOPES	X	S			X	X	X			X	X	X				
SdB2	SHELMADINE SILT LOAM, 3 TO 8 PERCENT SLOPES, MODERATELY ERODED	X	C/S	X			X	X			X	X	X				
Ts	TIOGA SILT LOAM, 0 TO 3 PERCENT SLOPES	X	C	X	X		X	X			X	X	X				
Tt	TIOGA SILT LOAM, HIGH BOTTOM, 0 TO 3 PERCENT SLOPES	X	C	X	X		X	X			X	X	X				
WcB2	WEIKERT CHANNERY SILT LOAM, 3 TO 12 PERCENT SLOPES, MODERATELY ERODED	X	C/S	X				X	X	X	X	X	X				
WcC2	WEIKERT CHANNERY SILT LOAM, 12 TO 20 PERCENT SLOPES, MODERATELY ERODED	X	C/S	X				X	X	X	X	X	X				
WcD2	WEIKERT CHANNERY SILT LOAM, 20 TO 35 PERCENT SLOPES, MODERATELY ERODED	X	C/S	X				X	X	X	X	X	X				
WcF2	WEIKERT CHANNERY SILT LOAM, 35 TO 80 PERCENT SLOPES, MODERATELY ERODED	X	C/S	X				X	X	X	X	X	X				
WmB2	WESTMORELAND SILT LOAM, 3 TO 12 PERCENT SLOPES, MODERATELY ERODED	X	C	X					X	X	X	X	X				
WmC2	WESTMORELAND SILT LOAM, 12 TO 20 PERCENT SLOPES, MODERATELY ERODED	X	C	X							X	X	X				

**LEGEND**  
X APPLIES TO SOIL  
S CORROSIVE TO STEEL  
C CORROSIVE TO CONCRETE  
C/S CORROSIVE TO STEEL AND CONCRETE

**ENGINEER OF RECORD**

BL COMPANIES  
4242 CARLISLE PIKE, SUITE 260  
CAMP HILL, PA 17011  
P:717-651-9850  
F:717-651-9858



PENNSYLVANIA ACT 287 (1974) AS AMENDED BY PENNSYLVANIA ACT 199 (2004) REQUIRES NO LESS THAN THREE (3) WORKING DAYS AND NO MORE THAN (10) WORKING DAYS NOTICE TO UTILITIES BEFORE YOU EXCAVATE, DRILL, BLAST OR DEMOLISH.



SUZANNE KING REG. NO. PE 022757  
ARCHITECTURE  
ENGINEERING  
ENVIRONMENTAL  
LAND SURVEYING

REVISIONS			
NO.	DATE	BY	DESCRIPTION
0	07/17/2015	BL	ISSUED FOR PADEP SUBMITTAL
1	12/02/2015	BL	ISSUED FOR PADEP RESUBMITTAL
2	OCT. 2016	BL	PADEP TECHNICAL DEFICIENCY RESPONSE #1
3	APRIL 2017	BL	PADEP TECHNICAL DEFICIENCY RESPONSE #2
4	AUG. 2017	BL	PADEP TECHNICAL DEFICIENCY RESPONSE #3

TRANSCONTINENTAL GAS PIPE LINE COMPANY, LLC			
ATLANTIC SUNRISE PROJECT - PROPOSED 42" CENTRAL PENN LINE SOUTH			
ACCESS ROADS COLUMBIA COUNTY, PENNSYLVANIA			
COVER SHEET			
DRAWN BY: OLC/MS	DATE: 4/2015	ISSUED FOR BID:	SCALE:
CHECKED BY: DAK	DATE: 06/12/15	ISSUED FOR CONSTRUCTION:	REVISION: 4
APPROVED BY: SMK	DATE: 07/07/15	DRAWING NUMBER:	SHEET 1
NO: W01161503		24-1600-70-28-A/LL113_9-AR-CO	OF 4



Drawn By & Date: saking Jul 27, 2017 - 4:05pm  
 Drawing Location & Name: G:\0851\14\14c4909\DWG\020-CPLS\AR\_CV14c4909(20)\_CO.dwg

NOTE: FULL ROADS THAT ARE CROSSED OUT IN THE ABOVE TABLE HAVE BEEN REMOVED FROM THE PROJECT. PCSM PLANS THAT ARE CROSSED OUT IN THE ABOVE TABLE HAVE BEEN MOVED TO THE SEPARATE PCSM PLAN SET.