

APPENDIX A

Emergency Contacts and Downstream Users

**PREPAREDNESS, PREVENTION, AND COUNTERMEASURES PLAN
 KENDRA II - BEAR LAKE DISPOSAL FACILITY
 1889 CORNISH HILL ROAD
 BEAR LAKE, PENNSYLVANIA 16402**

APPENDIX A

EMERGENCY CONTACTS

INTERNAL CALL LIST

| Name | Position | 24-Hour Phone Number |
|---------------------|---|-------------------------|
| John McCollums | Primary Emergency Coordinator Operations Manager | 724-971-0788 |
| Henk VanHengel | Secondary Emergency Coordinator Vice President | 702-328-1199 |
| Charleen Gemberling | Tertiary Emergency Coordinator Office Manager | 570-533-7019 |

EXTERNAL CALL LIST

| Emergency Contacts | |
|--|--|
| Fire Department | 911 |
| Police Department | 911 |
| PA Emergency Management Agency | 717-651-2201 |
| Emergency Medical Service | 911 |
| Environmental Agency Contacts | |
| PADEP Northwest Regional Office (24-hour) | 814-332-6860 |
| USEPA Region 3 | 215-566-3255 |
| National Response Center | 800-424-8802 |
| PA Fish and Boat Commission Spill Response Hotline | 855-347-4545 (855-FISH-KIL) |
| Spill Response Contractors | |
| McCutcheon Enterprises Inc | 844-765-0001 724-568-3623 (24 hour) |
| Clean Harbors Environmental | 800-645-8265 (24 hour) |

APPENDIX B

Action List for Spill Response

**PREPAREDNESS, PREVENTION, AND COUNTERMEASURES PLAN
KENDRA II - BEAR LAKE DISPOSAL FACILITY
1889 CORNISH HILL ROAD
BEAR LAKE, PENNSYLVANIA 16402**

APPENDIX B

ACTION LIST FOR SPILL RESPONSE

- 1** **Ensure the safety of employees in the area.**
Do not compromise human health and safety. If unsafe conditions exist, move to safety and contact the authorities.

- 2** **Extinguish any source of ignition.**

- 3** **Attempt to stop the spill at its source.**
If the area is safe, attempt to close valves, plug holes, power off pumps, etc.

- 4** **Contain the material in the smallest possible area.**
Use spill response equipment to contain the spill and prevent it from migrating. Pay specific attention to preventing the spill from reaching surface waters.

- 5** **Identify the spilled material.**
Review the Safety Data Sheet.

- 6** **Notify the Emergency Coordinator.**
The Emergency Coordinator will provide specific instructions for response activities and contact spill response contractors, if necessary.

- 7** **Begin the Notification Procedures**
An assessment of potential hazards to public health and safety, public welfare, and the environment will be performed and the applicable notifications to emergency responders initiated.

- 8** **Recover or Clean Up the Spilled Material**
As much material as possible will be recovered and reused where appropriate. Liquids absorbed by solid materials will be shoveled into open top drums. All equipment used in the cleanup will be decontaminated. When drums are filled or the cleanup is finished, the drum lids will be secured and the drums will be appropriately labeled identifying the contents. Mixing of wastes will be avoided. Arrangement for proper disposal of the waste in accordance with applicable federal and state regulations will be made. Recovered wastes will be stored away from the affected area to avoid blocking movement paths of emergency responders and/or cleanup crews.

List of Emergency Coordinators and Internal Contacts

| Name | Position | 24-Hour Phone Number |
|----------------------------|--|-------------------------|
| Kenneth Scavone | Primary Emergency Coordinator Operation Manager | 724-971-0788 |
| Henk VanHengel | Secondary Emergency Coordinator Vice President | 702-328-1199 |
| Charleen Gemberling | Tertiary Emergency Coordinator Office Manager | 570-533-7019 |

APPENDIX C

Record of Testing, Inspections, and Preventive Maintenance

**PREPAREDNESS, PREVENTION, AND COUNTERMEASURES PLAN
KENDRA II – BEAR LAKE DISPOSAL FACILITY
1889 CORNISH HILL ROAD
BEAR LAKE, PA 16402**

APPENDIX C

RECORD OF INSPECTIONS

Instructions: This record should be completed monthly. Visually inspect each item, placing an in the appropriate box for each item. If any item needs explanation, do so in the space provided, or attach additional sheets if necessary. Any item that receives "yes" as an answer must be described and addressed immediately.

DATE: _____ INSPECTOR NAME: _____

COORDINATOR SIGNATURE: _____

LOCATION: _____

| Bulk Storage Tanks, Drums and Other Containers | Yes | No | N/A | COMMENTS |
|---|------------|-----------|------------|-----------------|
| Drip Marks or Other Signs of Leakage | | | | |
| Lids and Valves are Properly Secured | | | | |
| Discoloration of Tanks | | | | |
| Puddles Containing Spilled or Leaked Material | | | | |
| Corrosion, Cracks, Damage, or Deterioration | | | | |
| Bolts, Rivets, or Seams Are Damaged | | | | |
| Supports Buckled, Eroded, Settled, or Deteriorated | | | | |
| Level Indicator(s) Functioning | | | | |
| Alarm System Functioning | | | | |
| Good Housekeeping Maintained | | | | |
| All Portable Containers within Secondary Containment | | | | |
| Other | | | | |
| Sumps/Dikes Used as Secondary Containment | | | | |
| Cracks or Gaps in Concrete, Masonry, etc. | | | | |
| Damage to Geomembrane Layer | | | | |
| Discoloration | | | | |
| Presence of Spilled or Leaked Material | | | | |
| Settling or Other Foundation Damage | | | | |
| Damage Caused by Vegetation Roots | | | | |
| Accumulated Precipitation | | | | |
| Other | | | | |
| Pumps and Piping | | | | |
| Droplets of Stored Material | | | | |
| Discoloration or Corrosion | | | | |
| Evidence of Seepage From Valves or Seals | | | | |
| Connections Not Capped or Blank-Flanged | | | | |
| Pumps and Valves Locked if Not in Use | | | | |
| Equipment Malfunction | | | | |
| Other | | | | |
| Spill Kit & Security | | | | |
| Response Equipment Inventory Complete | | | | |
| Fencing, Gates, Locks, Lighting, Alarm Malfunction | | | | |

PREPAREDNESS, PREVENTION, AND COUNTERMEASURES PLAN
 KENDRA II – BEAR LAKE DISPOSAL FACILITY
 1889 CORNISH HILL ROAD
 BEAR LAKE, PA 16402

APPENDIX C

RECORD OF INSPECTIONS

| Parking Lots and Vehicle Storage | Yes | No | N/A | COMMENTS |
|--|-----|----|-----|----------|
| Evidence of Leaks or Spills | | | | |
| Good Housekeeping Maintained | | | | |
| Other | | | | |
| Loading/Unloading Areas | | | | |
| Drip Marks or Other Signs of Leakage | | | | |
| Discoloration or Corrosion of Piping | | | | |
| Cracks or Gaps in Concrete, Masonry, etc. | | | | |
| Spilled or Leaked Material | | | | |
| Other | | | | |
| Stormwater and Erosion | | | | |
| Areas of Erosion Problems | | | | |
| BMPs Functioning Properly | | | | |
| Evidence of Sheen or Other Pollutants in Stormwater | | | | |
| Excessive Sediment Transport from Stormwater | | | | |
| Pollutants Exposed to Stormwater not in Containment | | | | |
| New Materials with Potential for Stormwater Exposure | | | | |
| Nuisance Control | | | | |
| Signs of Nuisance Animals | | | | |
| Signs of Nuisance Vectors | | | | |
| Signs of Nuisance Noise | | | | |
| Signs of Nuisance Light | | | | |
| Signs of Nuisance Dust | | | | |
| Signs of Nuisance Litter | | | | |

**PREPAREDNESS, PREVENTION, AND COUNTERMEASURES PLAN
 KENDRA II – BEAR LAKE DISPOSAL FACILITY
 1889 CORNISH HILL ROAD
 BEAR LAKE, PA 16402**

APPENDIX C

RECORD OF TESTING AND PREVENTIVE MAINTENANCE

| DATE/TIME OF INSPECTION | EMPLOYEE NAME | AREAS INSPECTED OR TESTED* | MAINTENANCE REQUIRED | MAINTENANCE COMPLETED |
|-------------------------|---------------|----------------------------|----------------------|-----------------------|
| | | | | |
| | | | | |
| | | | | |
| | | | | |
| | | | | |
| | | | | |
| | | | | |
| | | | | |
| | | | | |
| | | | | |
| | | | | |
| | | | | |
| | | | | |
| | | | | |
| | | | | |
| | | | | |
| | | | | |
| | | | | |
| | | | | |
| | | | | |

* Attach copies of official records of tank integrity and pressure tests. Records of certified tank inspections must be kept at the facility for at least three years. Shell testing records shall be kept on file for the life of the tank.

APPENDIX D

Copies of Routine Inspections and Annual Reports

APPENDIX E

Signature Pages and Plan Amendments

APPENDIX F

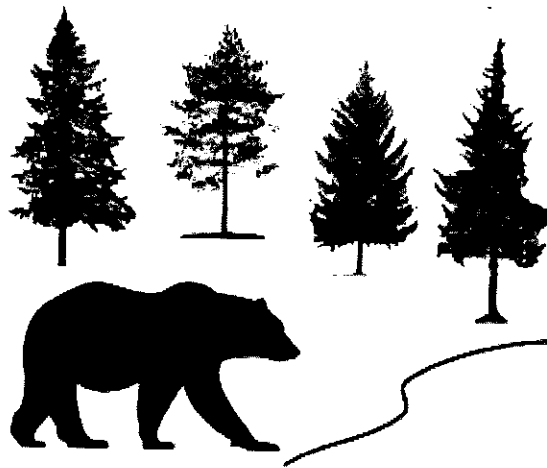
Nuisance Control Plan

**PREPAREDNESS, PREVENTION, AND CONTINGENCY
PLAN - APPENDIX F**

NUISANCE CONTROL PLAN

FOR THE:
KENDRA II, LLC
BEAR LAKE DISPOSAL FACILITY
1889 CORNISH HILL ROAD (SR 4004)
BEAR LAKE, PA 16402

PREPARED FOR:
Kendra II, LLC
(Bear Lake Properties, LLC)
5459 State Route 29
Springville, PA 18844



SEPTEMBER 2020

TABLE OF CONTENTS

| | PAGE |
|--------------------------------------|-------------|
| 1.0 EXECUTIVE SUMMARY | 1 |
| 2.0 PROJECT DESCRIPTION | 2 |
| 3.0 NUISANCE ASSESSMENT | 3 |
| <u>3.1 Nuisance Animals</u> | <u>3</u> |
| <u>3.2 Nuisance Vectors.....</u> | <u>3</u> |
| <u>3.3 Nuisance Noise</u> | <u>3</u> |
| <u>3.4 Nuisance Light.....</u> | <u>3</u> |
| <u>3.5 Nuisance Dust.....</u> | <u>3</u> |
| 4.0 COUNTERMEASURES..... | 5 |
| <u>4.1 Nuisance Animals</u> | <u>5</u> |
| <u>4.2 Nuisance Vectors.....</u> | <u>5</u> |
| <u>4.3 Nuisance Noise</u> | <u>5</u> |
| <u>4.4 Nuisance Light.....</u> | <u>6</u> |
| <u>4.5 Nuisance Dust.....</u> | <u>6</u> |
| <u>4.6 Litter.....</u> | <u>6</u> |
| <u>4.7 Nuisance Odors.....</u> | <u>6</u> |

1.0 EXECUTIVE SUMMARY

KENDRA II, LLC (Kendra), Bear Lake Properties, LLC (BLP) has developed this Nuisance Control Plan for the Bear Lake Disposal Facility (Facility). BLP operates the USEPA Class II UIC injection well facility at 1889 Cornish Hill Road, Bear Lake, PA for the disposal of oil and gas brine waste liquids.

2.0 PROJECT DESCRIPTION

The Facility operates under the Standard Industrial Classification (SIC) Code of 1389 (Oil & Gas-Other) and provides disposal of saltwater brine from the oil and gas industry. The Facility houses an unloading pad area and transfer pumps, four (4) 400-BBL and four (4) 300-BBL aboveground storage tanks (AST), TSS filtration equipment and injection of filtered liquids. The Facility is operated under a PADEP Waste Transfer Facility Permit #301366 and multiple USEPA UIC permitted injection wells for the processing and disposal of oil and gas liquid wastes generated during the production of oil and natural gas.

3.0 NUISANCE ASSESSMENT

3.1 Nuisance Animals

A daily visual inspection will be performed by the shift foreman. If signs of animal problems are identified, the shift foreman will verbally notify the supervisor, and the appropriate countermeasures will be conducted. Documentation of the daily inspections will be recorded monthly on the Record of Inspections Form, provided in Appendix C. By signing this form monthly, the employee is also acknowledging that brief daily inspections of the noted areas have been completed. All inspection reports will be maintained at the Facility.

3.2 Nuisance Vectors

A daily visual inspection will be performed by the shift foreman. If signs of vectors are identified, the shift foreman will verbally notify the supervisor, and the appropriate countermeasures will be conducted. Documentation of the daily inspections will be recorded monthly on the Record of Inspections Form, provided in Appendix C. By signing this form monthly, the Employee is also acknowledging that brief daily inspections of the noted areas have been completed. All inspection reports will be maintained at the Facility.

3.3 Nuisance Noise

A daily visual inspection will be performed by the shift foreman. If unusually loud noises are identified or reported by neighboring facilities, the shift foreman will verbally notify the supervisor, and the appropriate countermeasures will be conducted. Documentation of the daily inspections will be recorded monthly on the Record of Inspections Form, provided in Appendix C. By signing this form monthly, the Employee is also acknowledging that brief daily inspections of the noted areas have been completed. All inspection reports will be maintained at the Facility.

3.4 Nuisance Light

The work area is illuminated by several work lights during the evening and night time hours of operation. The Facility is operated 24-hours/7-days per week. Light in operational areas is necessary for visual operations and employee safety. Should any complaints be received about nuisance light, they will be handled by the supervisor on a case-by-case basis.

3.5 Nuisance Dust

Access roads and the unloading/loading areas of the treatment facility are graveled, concreted, or paved; therefore, nuisance dust should not be an issue. Should any complaints be received regarding nuisance dust, the supervisor will handle them on a case-by-case basis.

3.6 Litter

A daily visual inspection will be performed by the shift foreman. If excessive litter is identified or reported by neighboring facilities, the shift foreman will verbally notify the supervisor, and the appropriate countermeasures will be conducted. Documentation of the daily inspections will be recorded monthly on the Record of Inspections Form, provided in Appendix C of the PPC Plan. By signing this form monthly, the Employee is also acknowledging that brief daily inspections of the noted areas have been completed. All inspection reports will be maintained at the Facility.

3.7 Nuisance Odors

Olfactory inspections will be performed daily by the shift foreman, downwind of the Facility. If signs of nuisance odors are identified, the shift foreman will verbally notify the supervisor, and the appropriate countermeasures will be conducted. Documentation of the daily inspections will be recorded monthly on the Record of Inspections Form, provided in Appendix C of the PPC Plan. By signing this form monthly, the employee is acknowledging that the daily inspections of the noted areas have been completed. All inspection reports will be maintained at the Facility.

4.0 COUNTERMEASURES

4.1 Nuisance Animals

If an animal problem is observed or a complaint received by the supervisor, the appropriate countermeasure will be implemented by the supervisor. Depending on the type of animal (e.g., cats, opossum, ground hogs, etc.) and the state rules and regulations regarding the control of these animals, the countermeasure(s) may include, but not be limited to:

- Bait, capture and release in another area;
- Bait, capture and extermination;
- Extermination (by a licensed exterminator);
- Repellants; or
- Process or storage modifications to deter animals (e.g., fences, tarps).

If a farm animal has made its way onto the facility, the appropriate countermeasure(s) may include, but not be limited to:

- Returning the animal to the farm area;
- Notifying the farm owner of the animal so that they may remove it from the facility; or
- Restraining the animal in a safe area until the farm owner can remove it from the facility.

4.2 Nuisance Vectors

If a vector problem is observed or a complaint received by the supervisor, the appropriate countermeasure will be implemented by the supervisor. Depending on the type of vector (e.g. birds, rodents, mosquitos, etc.) the countermeasure(s) may include, but not be limited to:

- Pesticides;
- Repellants;
- Baits;
- Biological controls;
- Poisons; or
- Process or storage modifications.

Where appropriate, a licensed pesticide applicator or exterminator will be contracted to perform the countermeasure.

4.3 Nuisance Noise

If a noise complaint is observed or a complaint is received by the supervisor, the appropriate countermeasure will be implemented. Countermeasures may include, but are not limited to:

- Walls or sound barriers, which help absorb and block sound;
- Process modifications; or
- Delivery schedule revisions (e.g., reschedule truck deliveries to another time).

4.4 Nuisance Light

If the supervisor receives a complaint regarding nuisance light, the appropriate countermeasure will be implemented by the supervisor. The countermeasure may include, but is not limited to:

- Removing the source of nuisance light;
- Moving the nuisance light source; or
- Substituting a lower wattage bulb.

4.5 Nuisance Dust

If the supervisor receives a complaint regarding nuisance dust, the appropriate countermeasure will be implemented. The countermeasure may include, but is not limited to:

- Using water to spray the unpaved areas during dry weather;
- Using a dust agent on unpaved areas during dry weather; or
- Paving certain areas that are creating a dust nuisance.

4.6 Litter

If a litter problem is observed or a complaint received by the supervisor, the appropriate countermeasure will be implemented by the foreman or supervisor. The countermeasure may include, but is not limited to:

- Assigning an employee to pick up trash;
- Placing a trash receptacle in a problem area; or
- Using a fence or barrier to stop litter from blowing offsite.

4.7 Nuisance Odors

If an odor problem is observed or a complaint received by the supervisor, the appropriate countermeasure will be implemented by the supervisor. Depending on the source of the odor, the countermeasure(s) may include, but not be limited to:

- More frequent waste pickups;
- Installing an odor control system; or
- Other engineering controls deemed appropriate for the source issue.

APPENDIX G

Record of Team Member Training

**PREPAREDNESS, PREVENTION, AND COUNTERMEASURES PLAN
 KENDRA II – BEAR LAKE DISPOSAL FACILITY
 1889 CORNISH HILL ROAD
 BEAR LAKE, PA 16402**

APPENDIX G

RECORD OF EMPLOYEE TRAINING

| DATE OF TRAINING | PRINTED NAME OF EMPLOYEE TRAINED | SIGNATURE | TOPICS COVERED* |
|-------------------------|---|------------------|------------------------|
| | | | |
| | | | |
| | | | |
| | | | |
| | | | |
| | | | |
| | | | |
| | | | |
| | | | |
| | | | |
| | | | |
| | | | |
| | | | |
| | | | |
| | | | |
| | | | |
| | | | |
| | | | |
| | | | |
| | | | |
| | | | |
| | | | |
| | | | |
| | | | |
| | | | |
| | | | |
| | | | |

*Topic Areas

- A-Good Housekeeping
- B-Spill Prevention
- C-Inspections
- D-Preventative Maintenance
- E-Spill Response
- F-Reporting Procedures
- G-Stormwater Inspections
- H-OSHA Topics
- I-All Topics

APPENDIX H

Record of Spill History

APPENDIX I

Spill Report Form

PREPAREDNESS, PREVENTION, AND COUNTERMEASURES PLAN
KENDRA II – BEAR LAKE DISPOSAL FACILITY
1889 CORNISH HILL ROAD
BEAR LAKE, PA 16402

APPENDIX I

SPILL REPORT

Reporter's Name and Date: _____

Location of Discharge: _____

Date and Time Discharge Occurred: _____

Material and Amount Discharged: _____

Source of the Release: _____

Cause and Circumstances of Release: _____

Countermeasures to Contain and Clean-up Discharge: _____

Personnel/Agency Contacted Regarding Discharge Procedures: _____

Corrective Actions Implemented to Prevent Recurrence of Discharge: _____

Discharge Report Sent To: _____

EROSION & SEDIMENTATION PLAN

STATE OF NEW YORK
STATE OF PENNSYLVANIA
 COLUMBUS TOWNSHIP

BEAR LAKE PROPERTIES
PROPOSED FACILITY UPGRADES
SOIL EROSION & SEDIMENTATION CONTROL PLAN

Project Name: Bear Lake Properties
 Drawing Name: SOIL EROSION & SEDIMENTATION CONTROL PLAN
 Project No: 161517
 Drawing No: C-900

DATE ISSUED: AUGUST 4, 2020

Prepared For: Kendra II, LLC
 5469 State Route 29
 Springville, PA 18944

ISSUED FOR PERMIT REVIEW

Scale: 1" = 100'

North Arrow

Legend:
 --- LIMIT OF DISTURBANCE
 --- CONCRETE IN PLACE
 --- ASPHALT
 --- GRAVEL
 --- SOIL EROSION & SEDIMENTATION CONTROL

Soils Legend:
 C-1B Clayey Silty Loam to Firm Clay
 V-1B Heavy Silty Loam to Heavy Silty Clay
 V-2C Heavy Silty Loam to Heavy Silty Clay

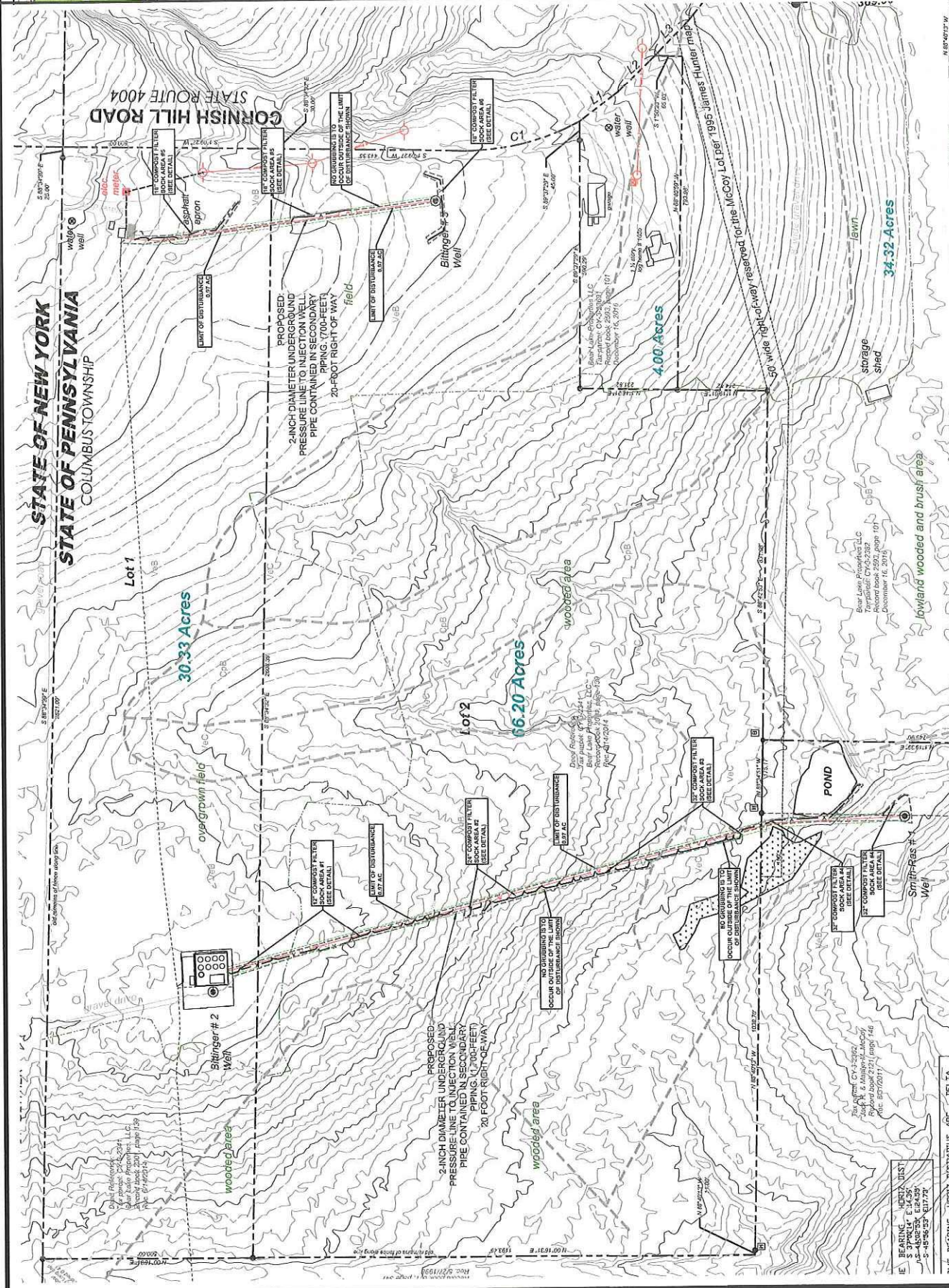
Changes: Scale: 1" = 100'

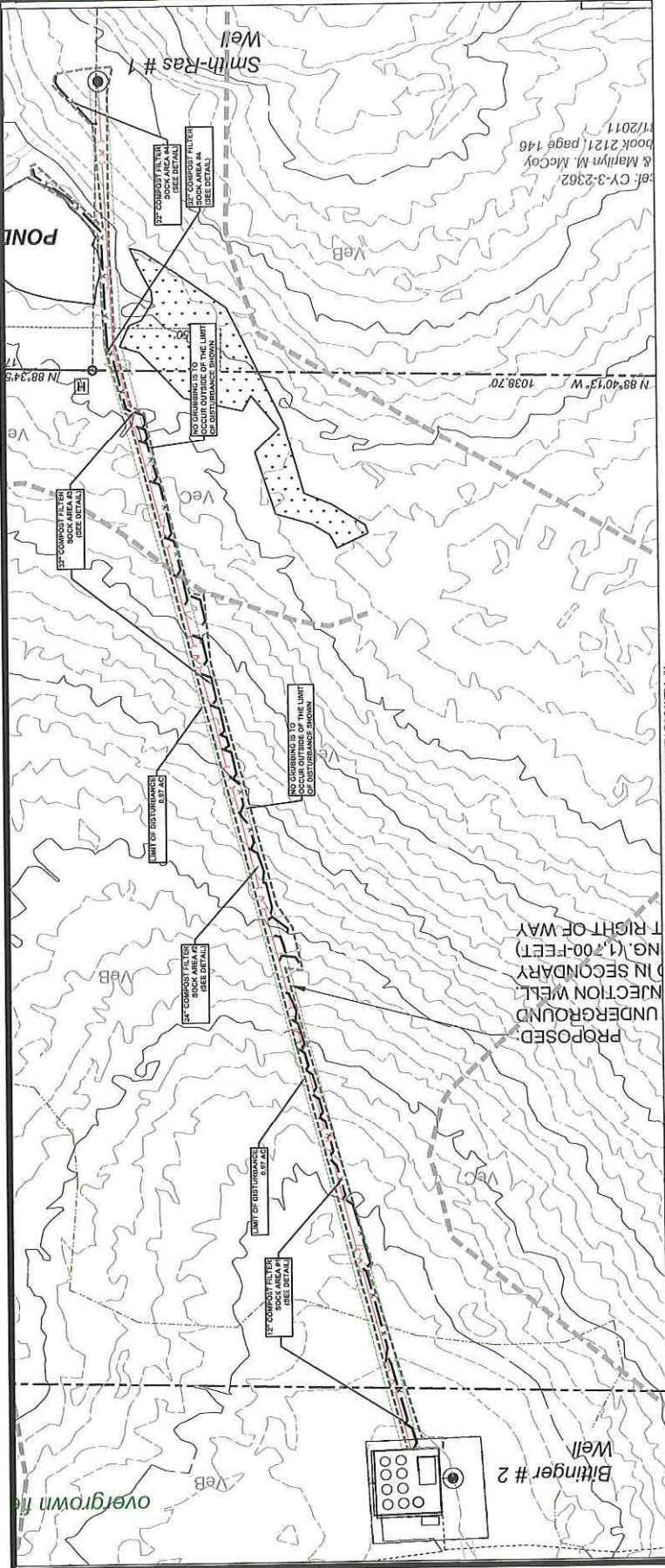
811
 Know what's below.
 Call before you dig.

DATE ISSUED: AUGUST 4, 2020

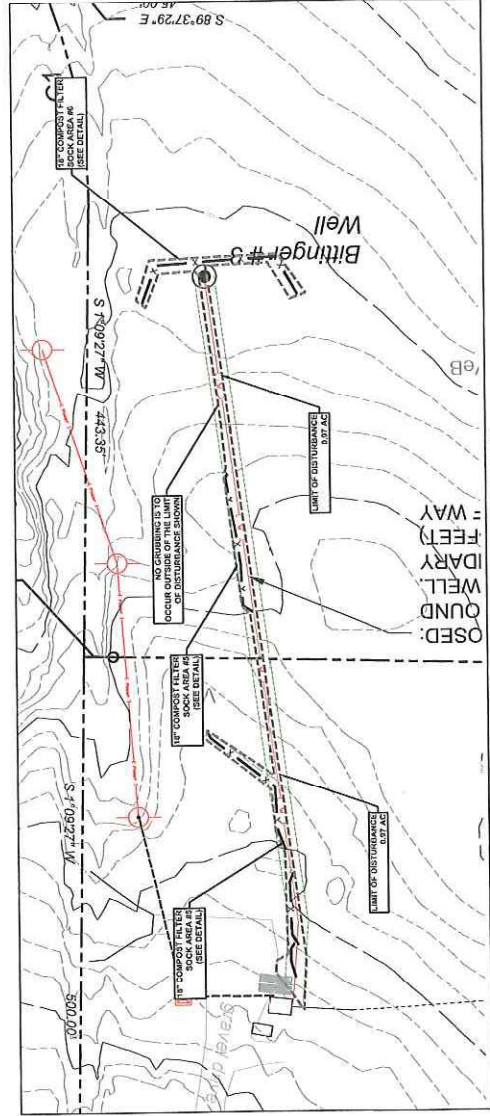
DATE: _____ DESCRIPTION: _____

Sheet 1 of: Columbus Township, Warren County, PA
 Project Name: Bear Lake Properties
 Drawing Name: SOIL EROSION & SEDIMENTATION CONTROL PLAN
 Project No: 161517
 Drawing No: C-900





BITTINGER WELL #2 TO SMITH RAS WELL #1
 SCALE 1" = 60'



BITTINGER WELL #2 TO SMITH RAS WELL #1
 SCALE 1" = 60'

Site Location:

LEGEND

UNIT OF DISTURBANCE

CONVEYANCE RIGHTS

CONVEYANCE RIGHTS

CONVEYANCE RIGHTS

CONVEYANCE RIGHTS

CONVEYANCE RIGHTS

CONVEYANCE RIGHTS

Soils Legend:

C1B - Clayey Silty Sand to Silty Sand

V6B - Very Silty Sand

V6C - Silty Sand

Graphic Scale: 1" = 60'

North Arrow

ISSUED FOR PERMIT REVIEW

PREPARED FOR:

Kendra II, LLC
 5459 State Route 29
 Springville, PA 18854

PREPARED BY:

Chad W. Perry, P.E.
 11/2011

Book 2121, page 146
 & Marilyn M. McCoy
 C.Y. 3-2362

DATE ISSUED: AUGUST 4, 2020

| DATE | DESCRIPTION |
|------|-------------|
| | |
| | |
| | |
| | |
| | |
| | |
| | |
| | |
| | |
| | |
| | |
| | |
| | |
| | |

Project Name:

**BEAR LAKE PROPERTIES
 PROPOSED FACILITY UPGRADES**

Drawing Name:
 SOIL EROSION & SEDIMENTATION
 CONTROL PLAN

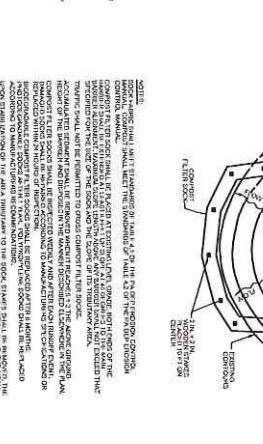
Sheet No: **C-501**

Drawing No: **161517**

STANDARD CONSTRUCTION DETAILS

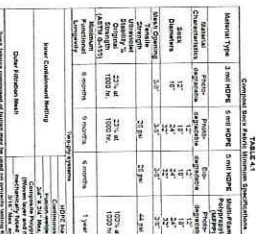
- 1. All steel fabrications, including bearing stiffeners, shall be made in accordance with the approved AISC Manual of Steel Construction, including the provisions of the AISC 360 Specification for Structural Steel Buildings, and the provisions of the AISC 308 Specification for Structural Steel Buildings, and shall be made in accordance with the provisions of the AISC 360 Specification for Structural Steel Buildings, and the provisions of the AISC 308 Specification for Structural Steel Buildings.
- 2. All steel fabrications, including bearing stiffeners, shall be made in accordance with the provisions of the AISC Manual of Steel Construction, including the provisions of the AISC 360 Specification for Structural Steel Buildings, and the provisions of the AISC 308 Specification for Structural Steel Buildings.
- 3. All steel fabrications, including bearing stiffeners, shall be made in accordance with the provisions of the AISC Manual of Steel Construction, including the provisions of the AISC 360 Specification for Structural Steel Buildings, and the provisions of the AISC 308 Specification for Structural Steel Buildings.

CONNECTING FLAT ROOF

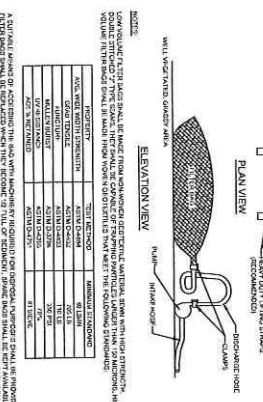


CONNECTING FLAT ROOF DETAIL #4-1

STANDARD CONSTRUCTION DETAIL #4-1

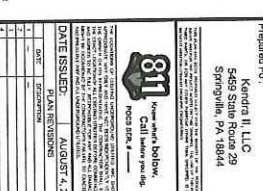


WELL VENTILES GROUND AREA



WELL VENTILES GROUND AREA DETAIL #3-16

STANDARD CONSTRUCTION DETAIL #3-16



BEAR LAKE PROPERTIES

Proposed Facility Improvements
Control Details
Not to Scale

811
PVE
ISSUED FOR PERMIT REVIEW
Drawing Scale: 1/4" = 1'-0"

161517 C-902
Project Name: Bear Lake Properties
Proposed Facility Improvements
Control Details
Not to Scale

BEAR LAKE PROPERTIES

Proposed Facility Improvements
Control Details
Not to Scale

811
PVE
ISSUED FOR PERMIT REVIEW
Drawing Scale: 1/4" = 1'-0"

161517 C-902
Project Name: Bear Lake Properties
Proposed Facility Improvements
Control Details
Not to Scale