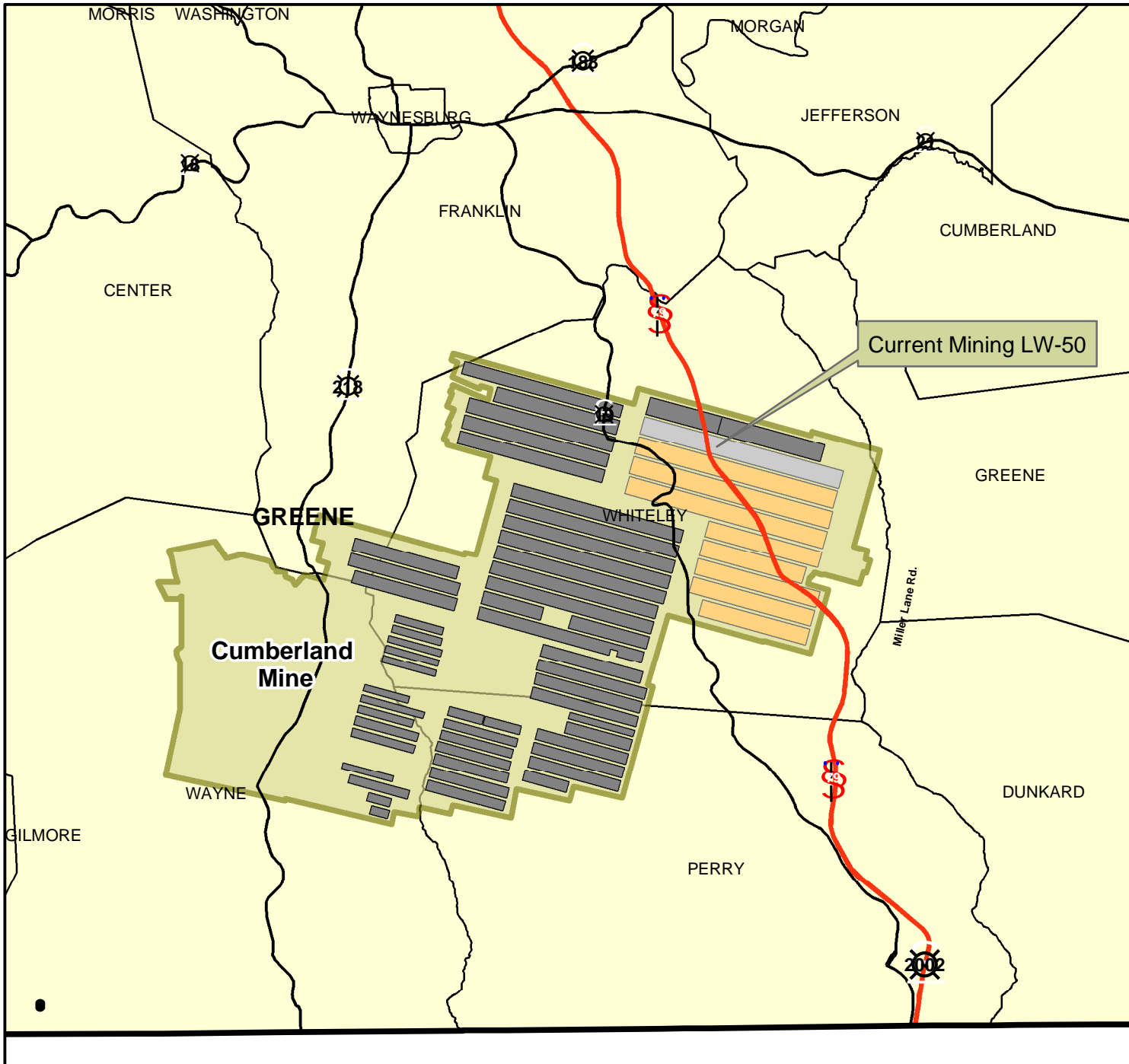


Cumberland Mine -- Permit Extents



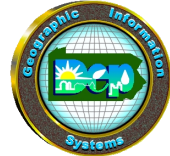
Legend

- Cumberland Mine

Longwall Panels

- Active
- Complete
- Projected

Prepared by:
 Pennsylvania Department
 of Environmental Protection
 California District Office
 Mine Subsidence Section
 Technical Services Unit
 July 2005



This map consists of the permit boundary of the Cumberland Mine, operated by Foundation Coal. It shows where the active longwall panel is located (LW-50), in relation to the mine, the roads, and surrounding municipalities in Greene County.

This map was prepared using information considered to be the best data available.

The Department cannot verify the accuracy or completeness of this information.

