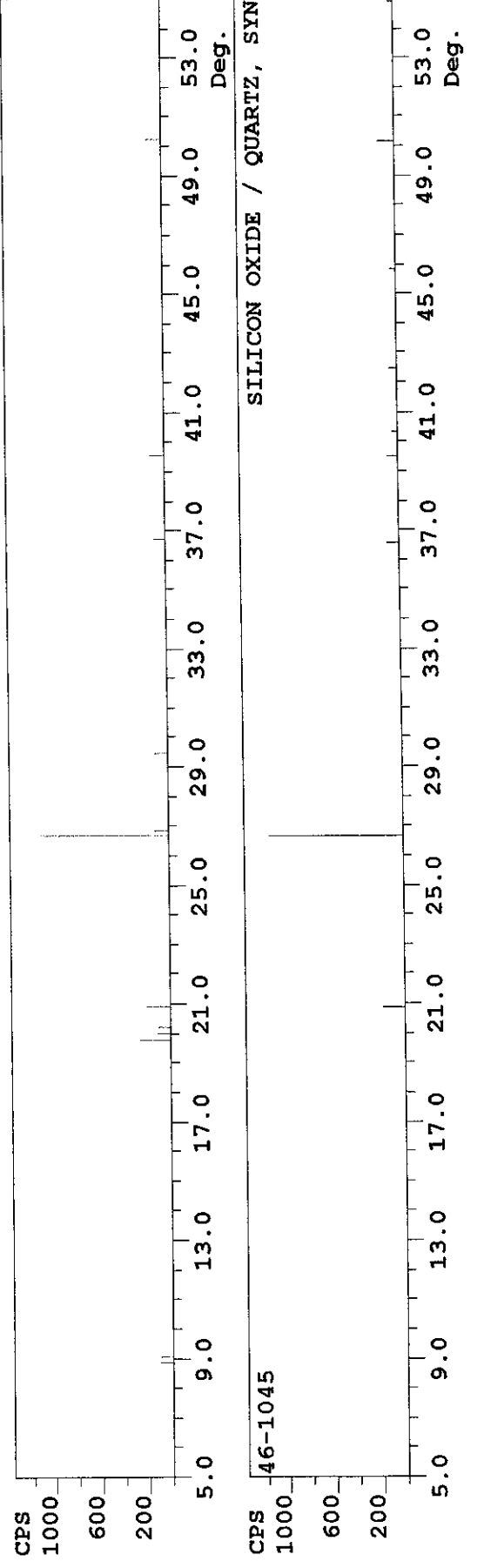
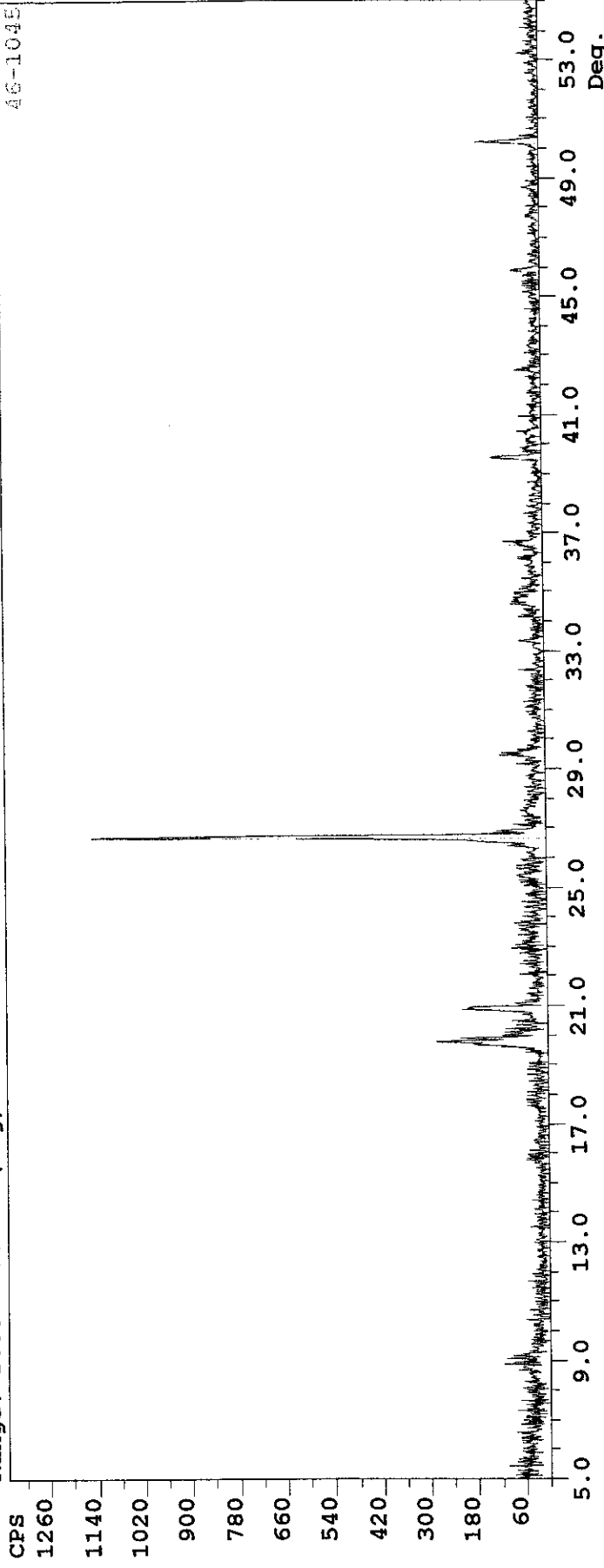


## **Appendix 8.F**

### **X-ray diffraction patterns of ash from test cells**

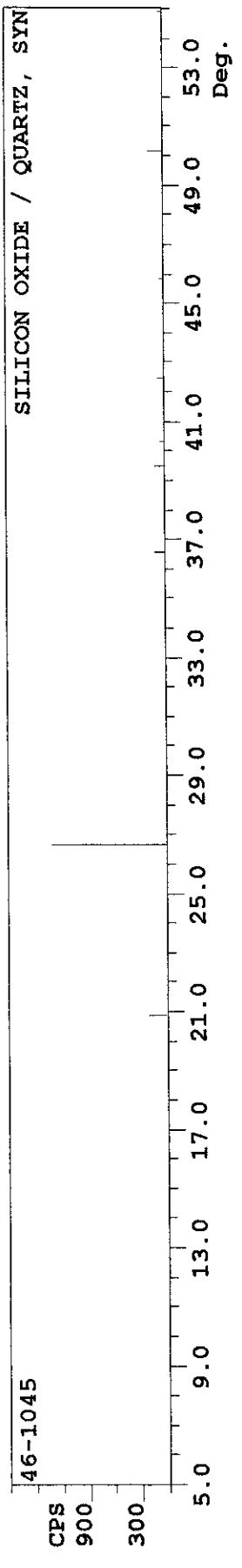
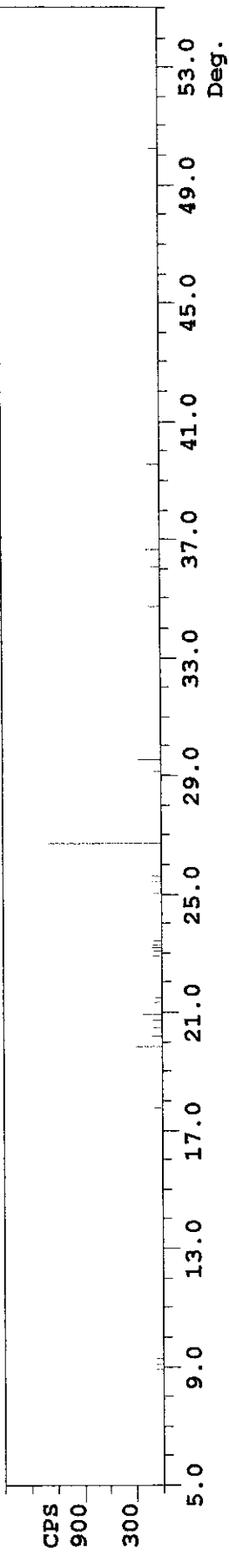
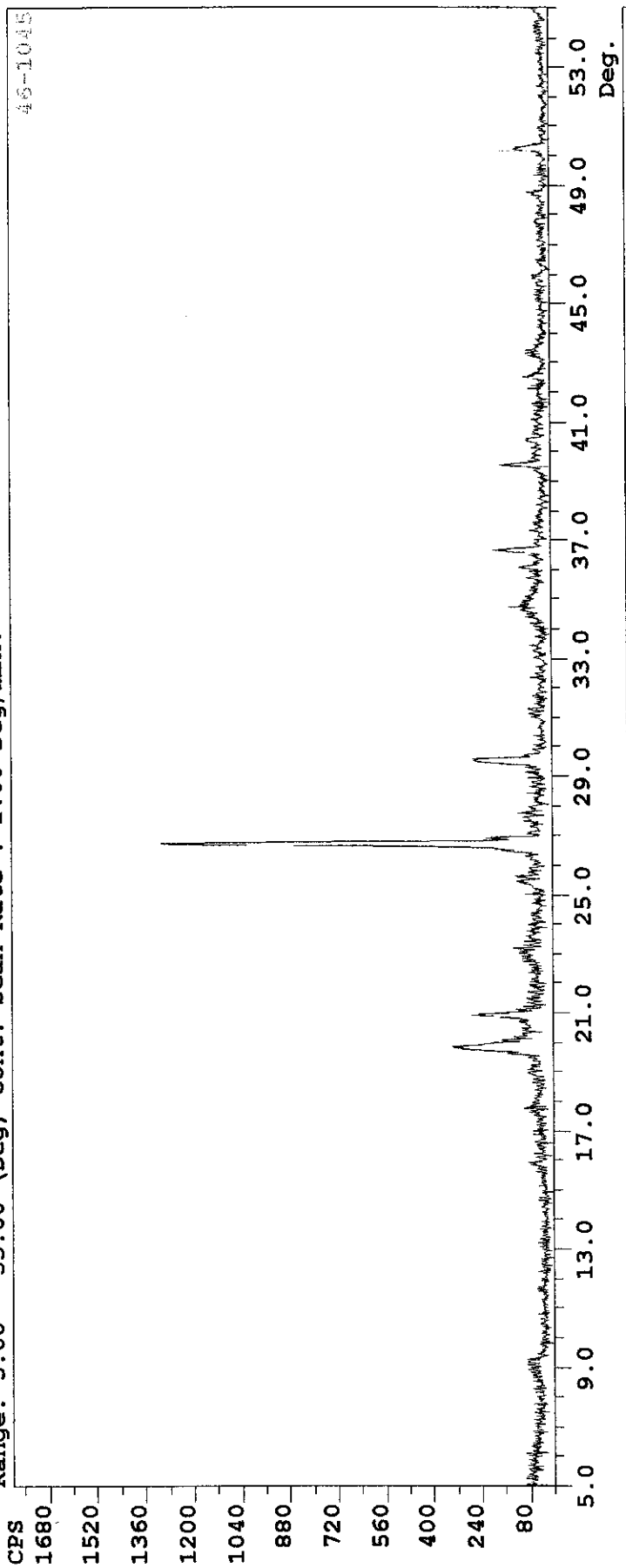
Cell 1  
Location 2  
5-7' depth  
August 2000

File: knick 1-2 5-7', ID: knick 1-2 5-7'  
Date: 12/05/00 17:14 Step : 0.020° Cnt Time: 0.300 Sec.  
Range: 5.00 - 55.00 (Deg) Cont. Scan Rate : 4.00 Deg/min.



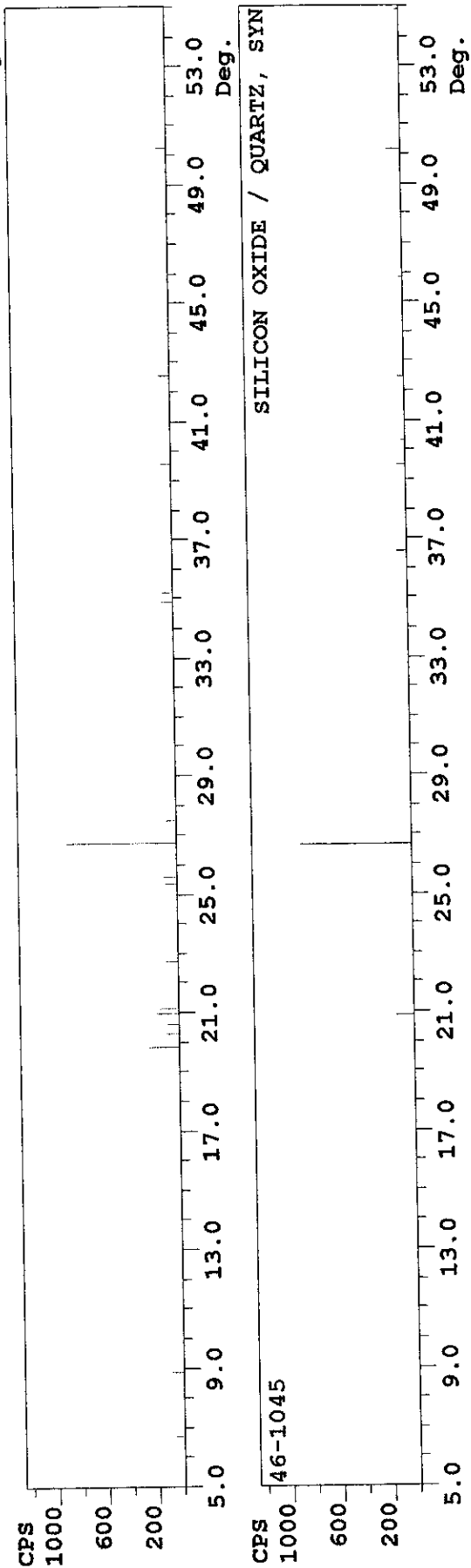
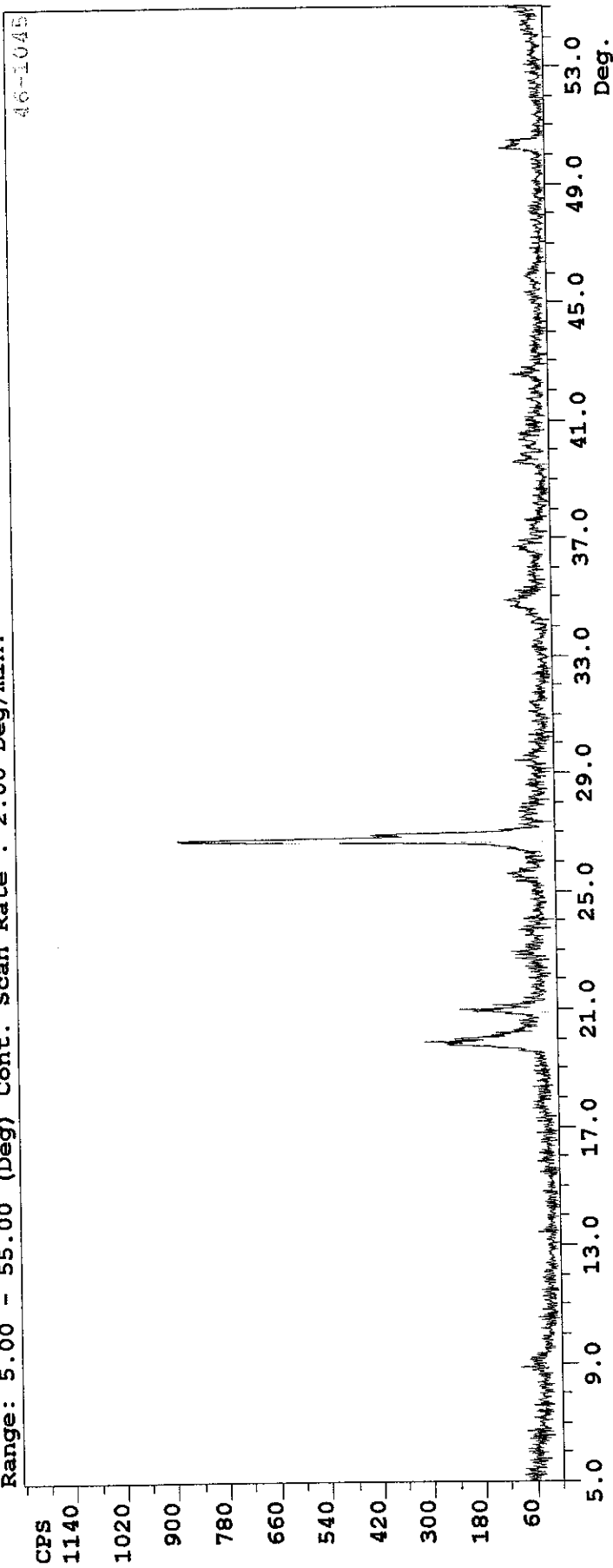
Cell 2  
Sample C  
0-2' depth  
February 2000

File: 2knick, ID:  
Date: 04/07/00 15:59 Step : 0.020° Cnt Time: 0.600 Sec.  
Range: 5.00 - 55.00 (Deg) Cont. Scan Rate : 2.00 Deg/min.



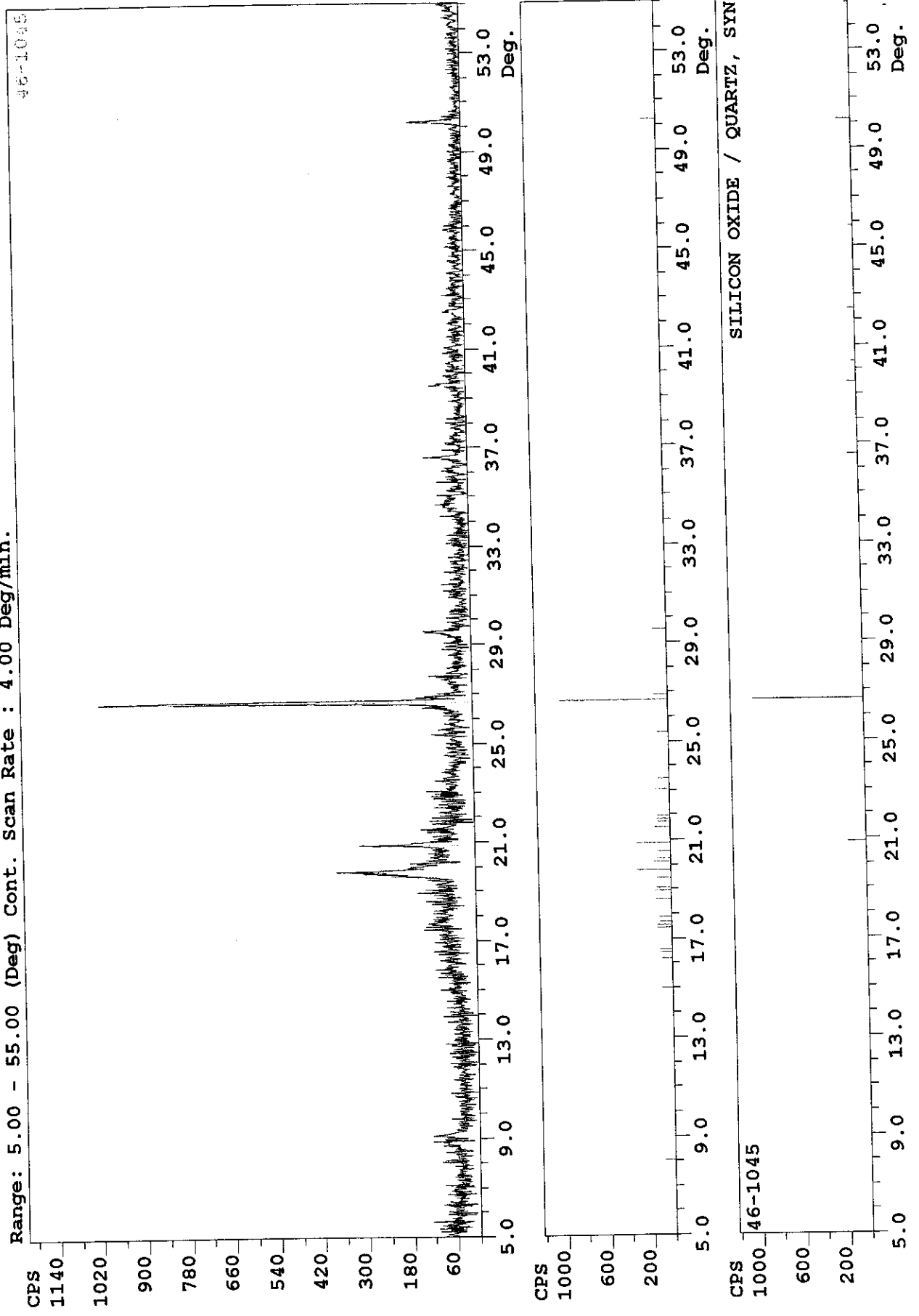
Cell 3  
Sample A  
6-8' depth  
February 2000

File: knick3, ID:  
Date: 04/07/00 16:27 Step: 0.020° Cnt Time: 0.600 Sec.  
Range: 5.00 - 55.00 (Deg) Cont. Scan Rate: 2.00 Deg/min.



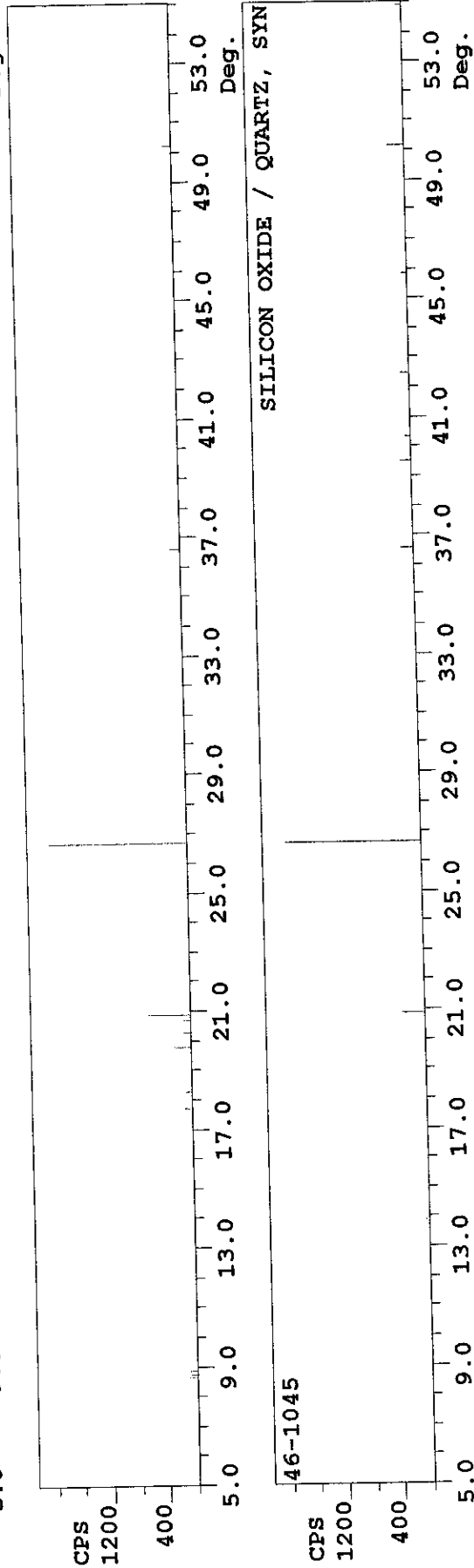
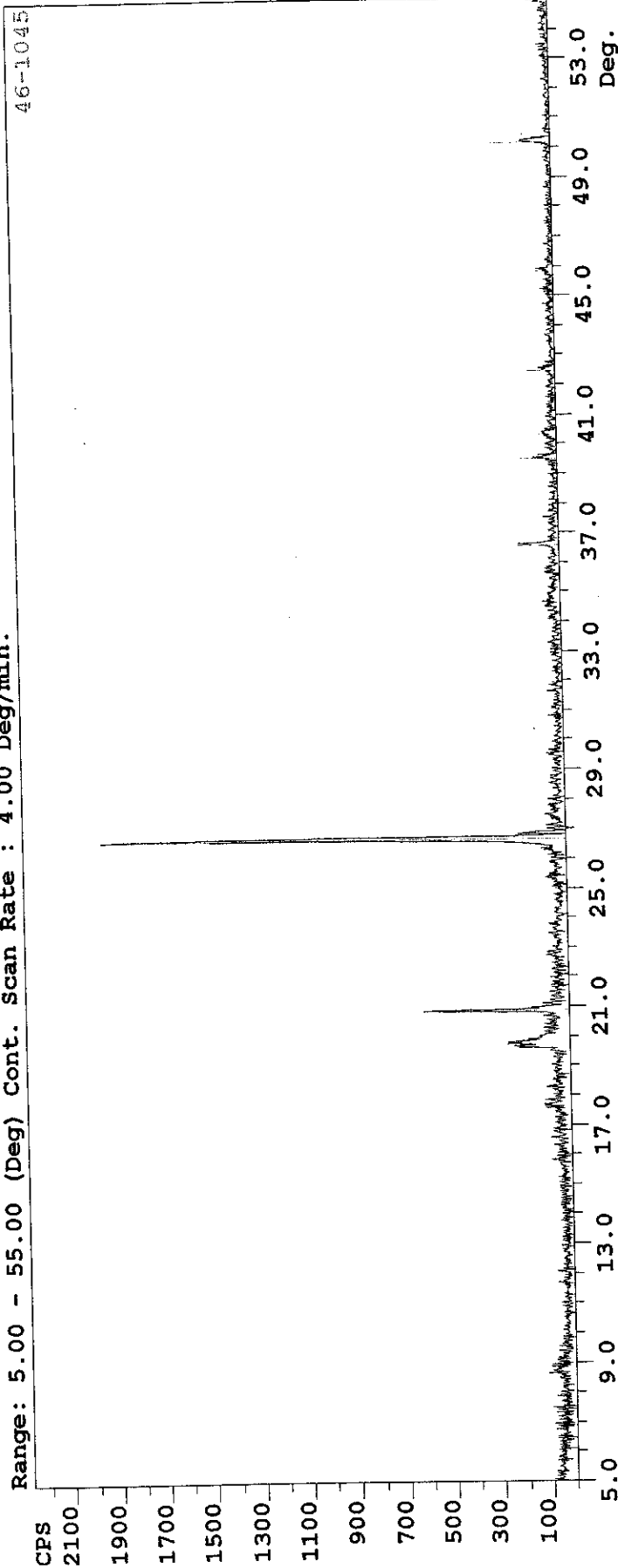
Cell 1  
Location 2  
0-2' depth  
August 2000

File: knick1-2 0-2', ID: knick 1-2 0-2'  
Date: 12/05/00 16:56 Step: 0.020° Cnt Time: 0.300 Sec.  
Range: 5.00 - 55.00 (Deg) Cont. Scan Rate: 4.00 Deg/min.



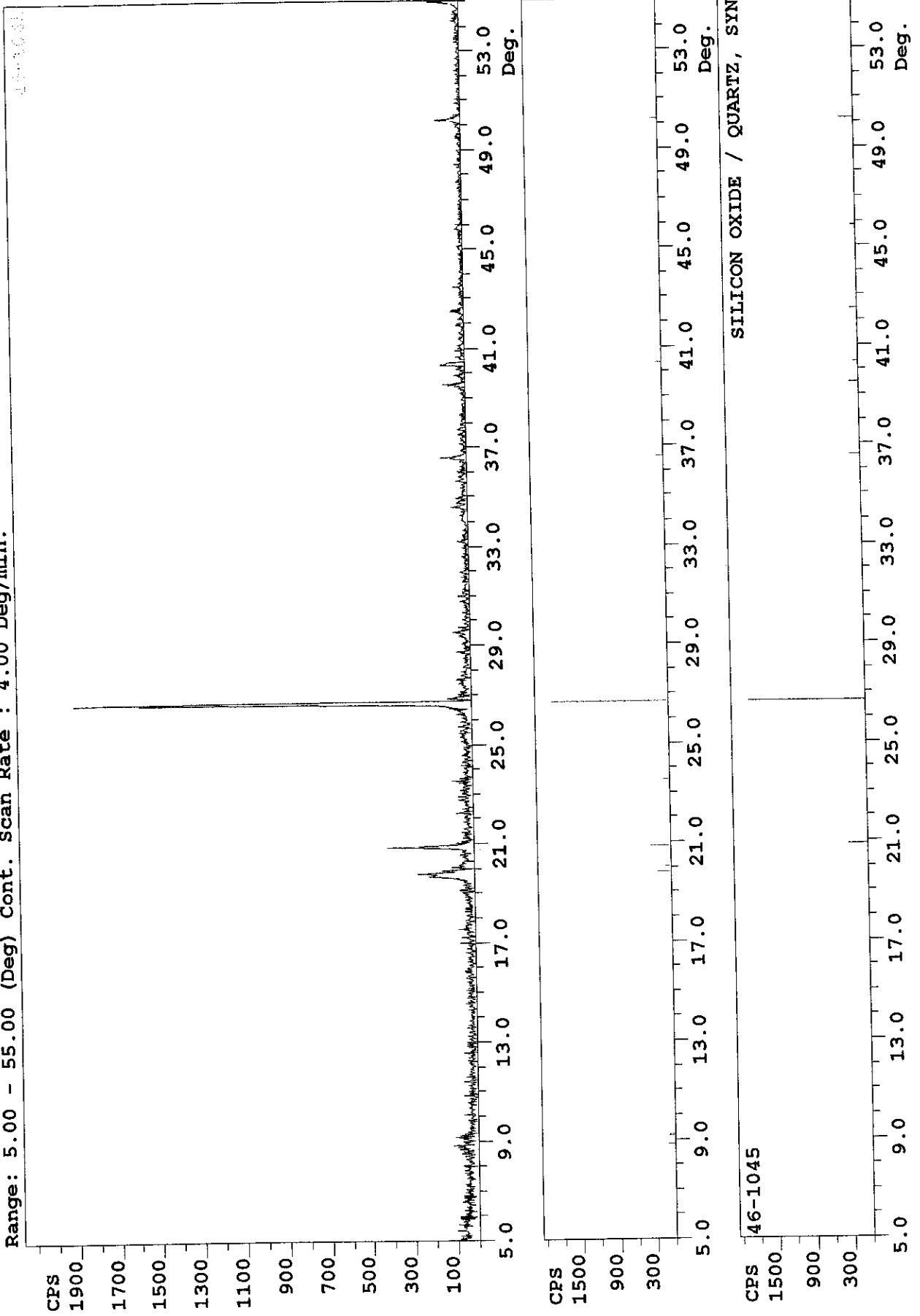
Cell 1  
Location 2  
15-17' depth  
August 2000

File: knick1-2, 15-17'real, ID: knick 1-2, 15-17'real  
Date: 12/04/00 16:35 Step: 0.020° Cnt Time: 0.300 Sec.  
Range: 5.00 - 55.00 (Deg) Cont. Scan Rate: 4.00 Deg/min.



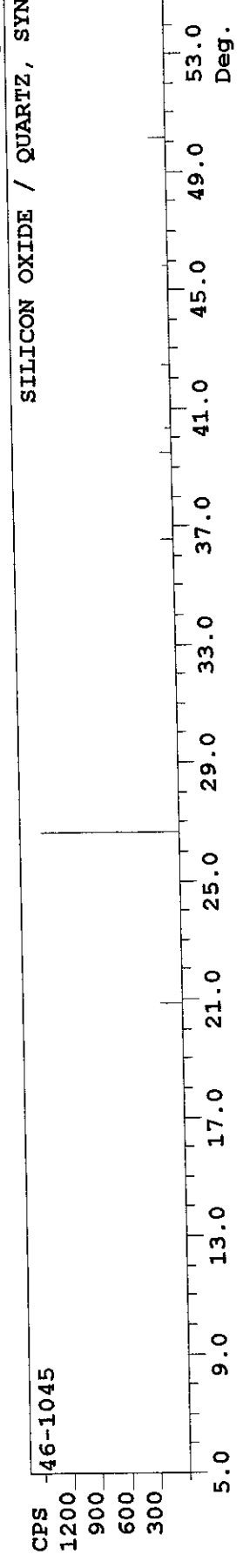
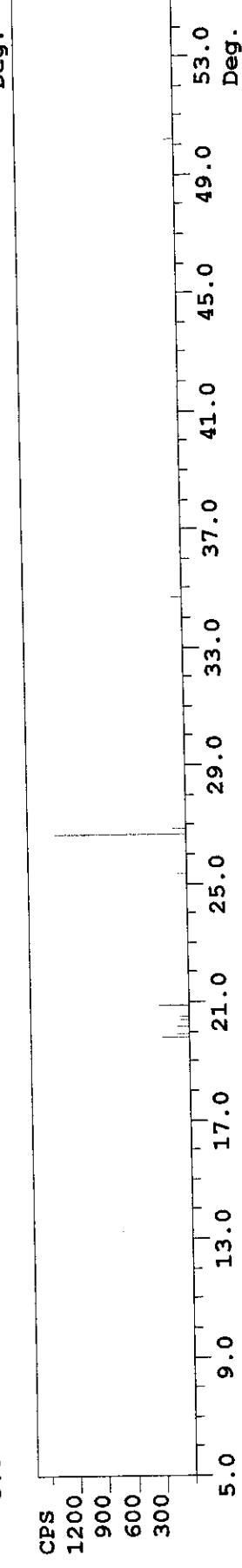
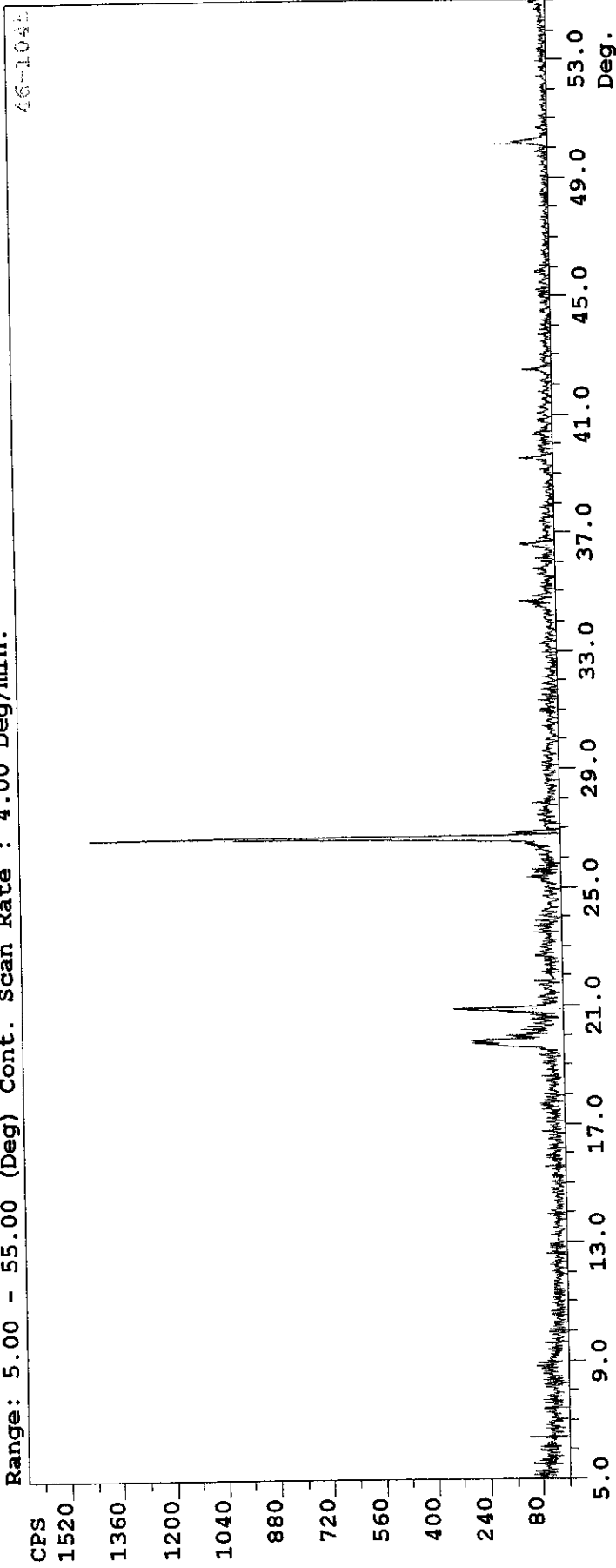
Cell:  
Location 1  
0-2' depth  
August 2000

File: knick 2-1 0-2', ID: knick2-1 0-2'  
Date: 12/04/00 17:25 Step: 0.020° Cnt Time: 0.300 Sec.  
Range: 5.00 - 55.00 (Deg) Cont. Scan Rate: 4.00 Deg/min.



Cell .  
Location 1  
15-17' depth  
August 2000

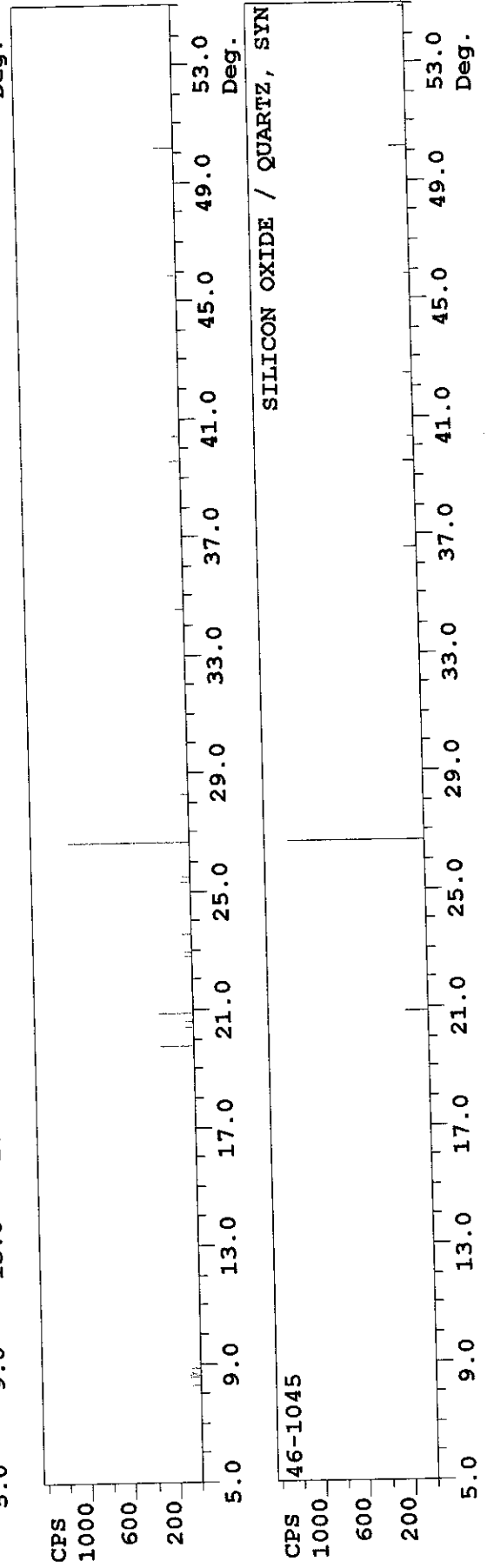
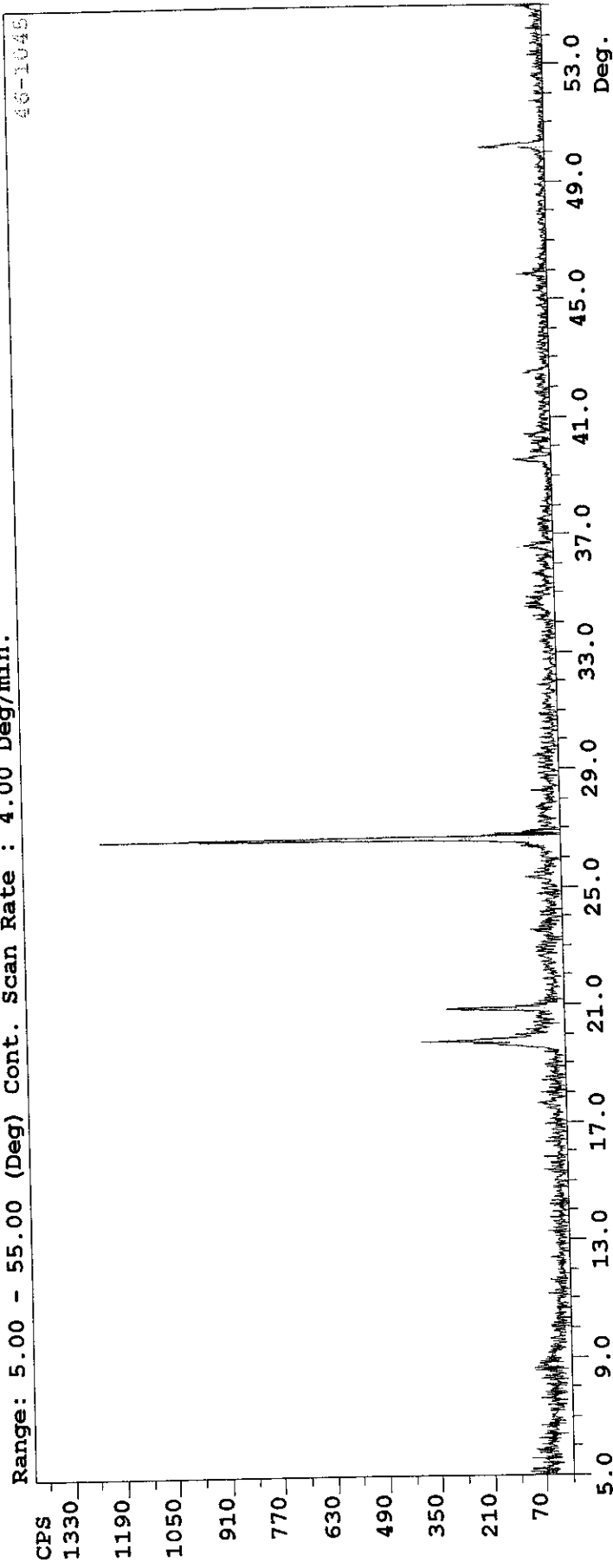
File: knick3-1 15-17', ID: knick3-1 15-17'  
Date: 12/04/00 17:09 step : 0.020° Cnt Time: 0.300 Sec.  
Range: 5.00 - 55.00 (Deg) Cont. Scan Rate : 4.00 Deg/min.





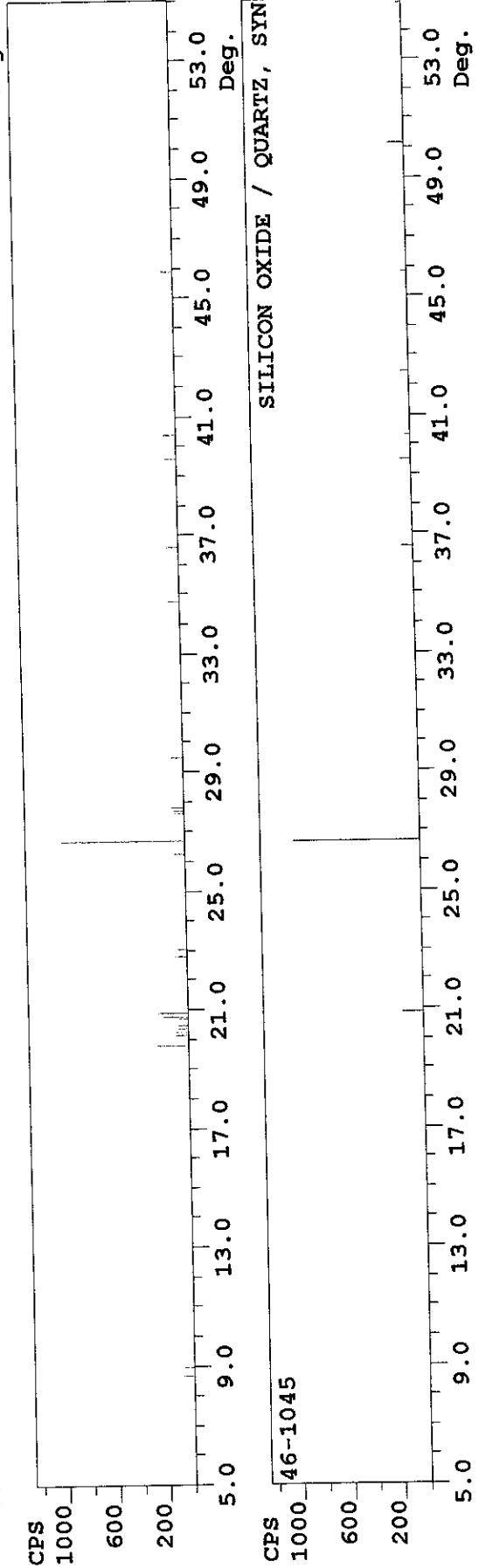
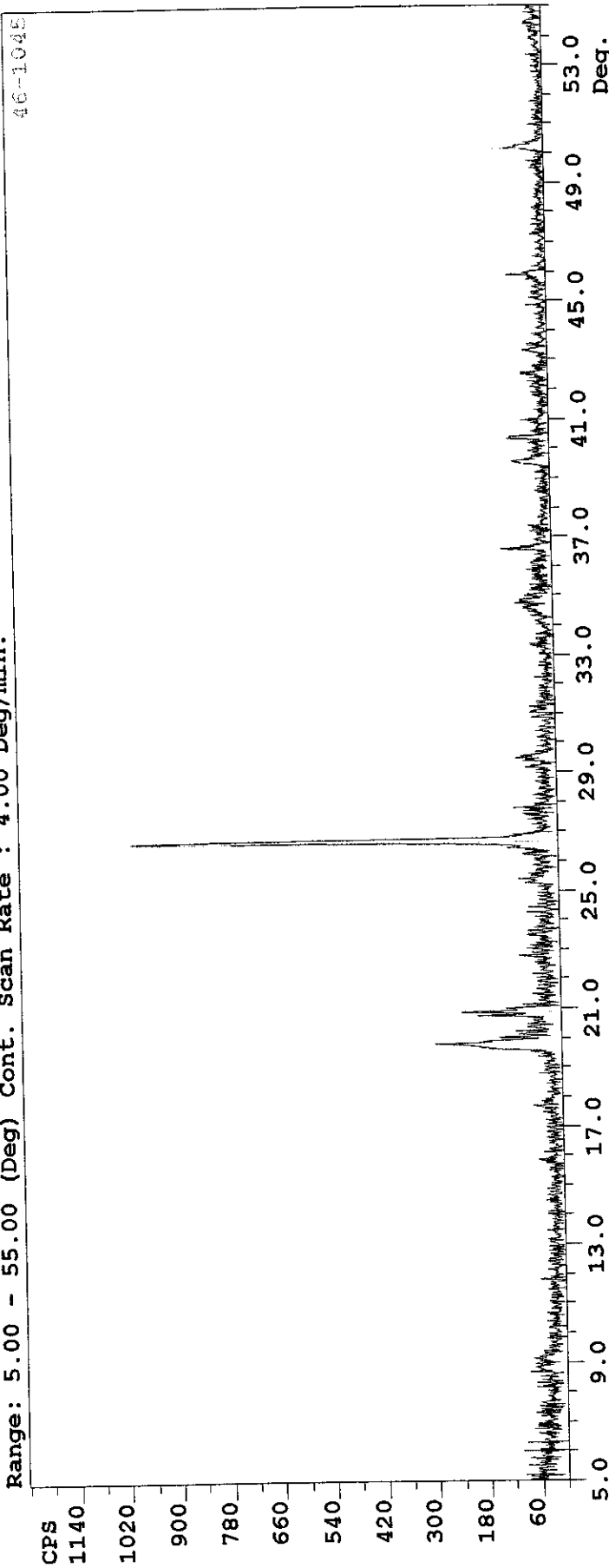
Cell  
Location 2  
5-7' depth  
August 2000

File: knick4-2 5-7', ID: knick4-2 5-7'  
Date: 12/04/00 16:51 Step: 0.020° Cnt Time: 0.300 Sec.  
Range: 5.00 - 55.00 (Deg) Cont. Scan Rate: 4.00 Deg/min.



Cell 1  
Location 2  
4-6' depth  
November 2000

File: knick nov00 1-2 4-6', ID: knick nov00 1-2 4-6'  
Date: 12/05/00 17:31 Step: 0.020° Cnt Time: 0.300 Sec.  
Range: 5.00 - 55.00 (Deg) Cont. Scan Rate: 4.00 Deg/min.



Cell 4  
Location 2  
6-8' depth  
November 2000

File: knick nov00 4-2 6-8', ID: knick nov00 4-2 6-8'  
Date: 12/05/00 17:48 Step: 0.020° Cnt Time: 0.300 Sec.  
Range: 5.00 - 55.00 (Deg) Cont. Scan Rate: 4.00 Deg/min.

