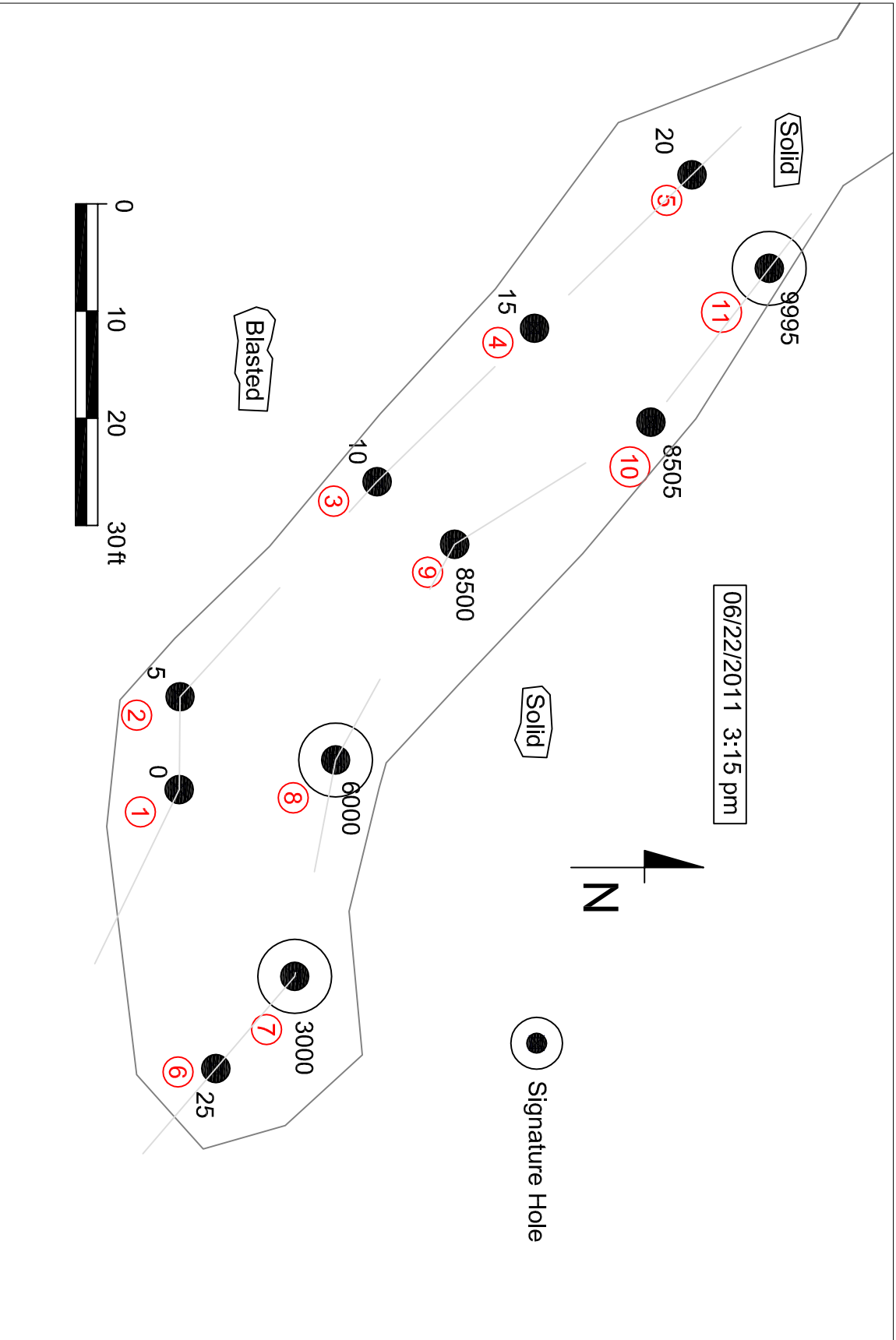
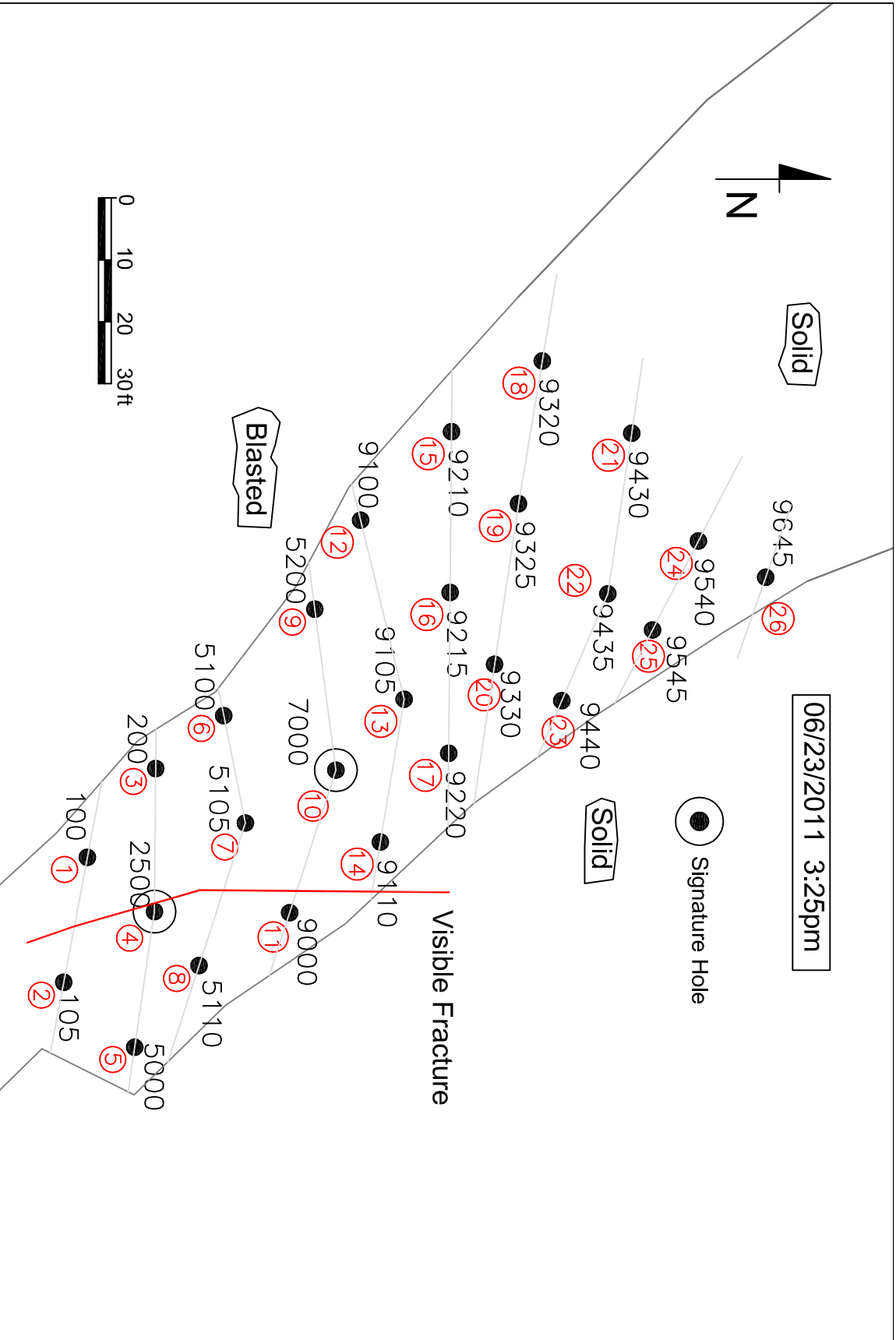


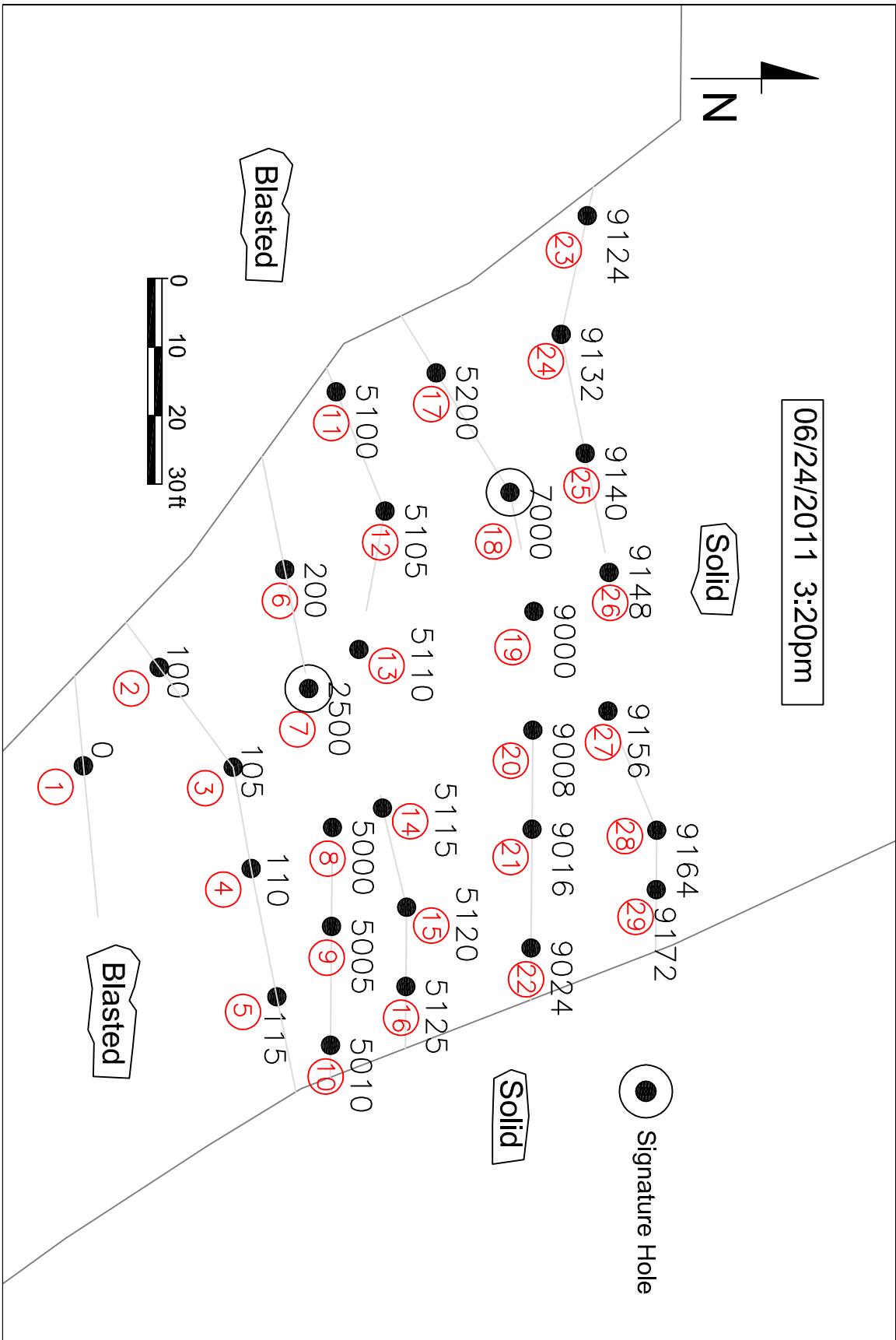
# **Appendix B**

Plan Layout  
and vibration records tests 2011

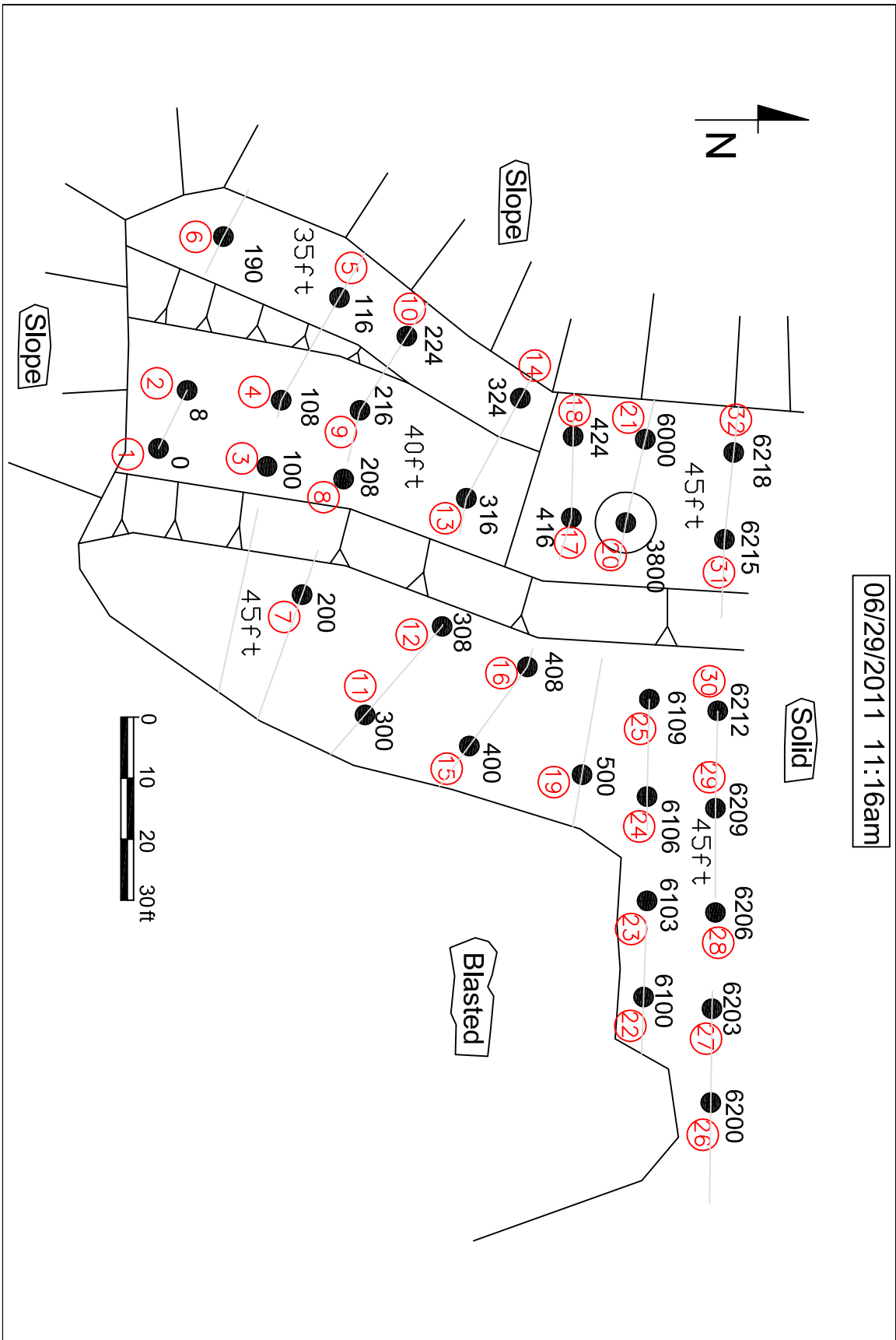




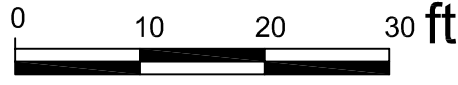
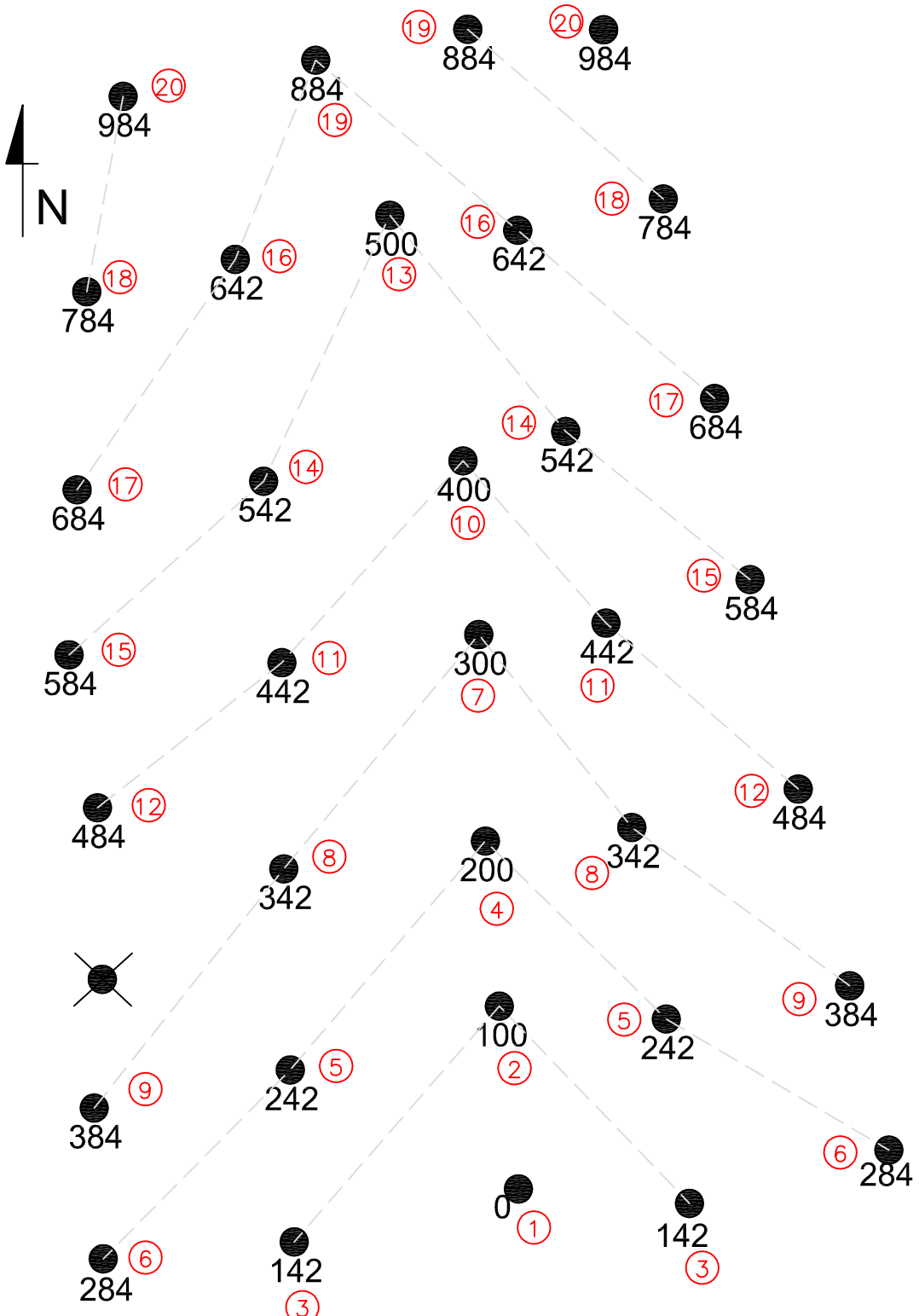
06/24/2011 3:20pm



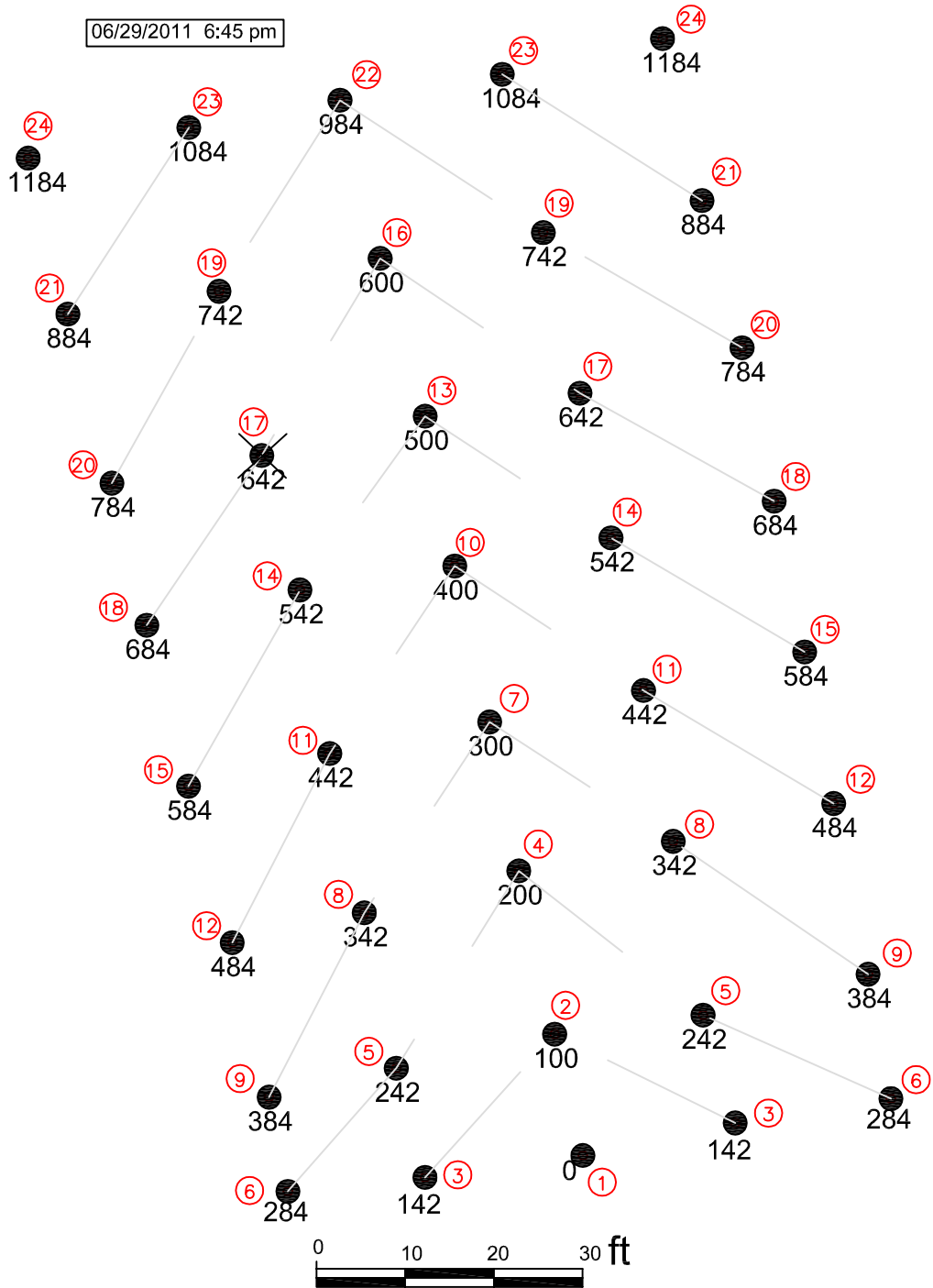
06/29/2011 11:16am



06/29/2011 3:33 pm

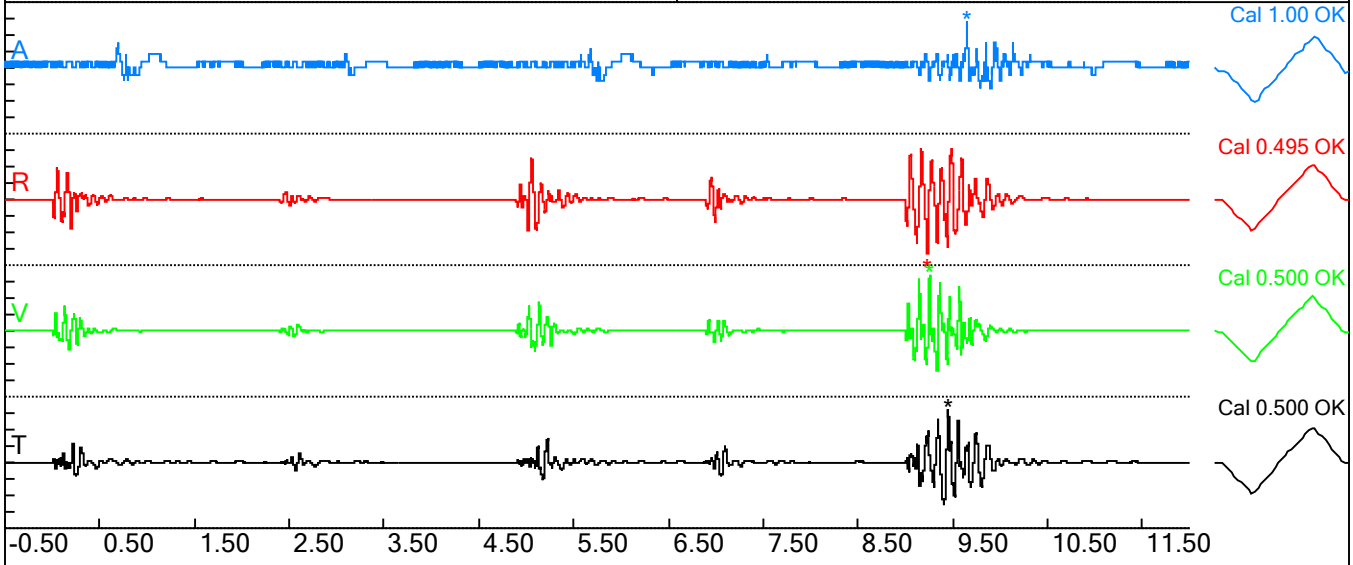


06/29/2011 6:45 pm

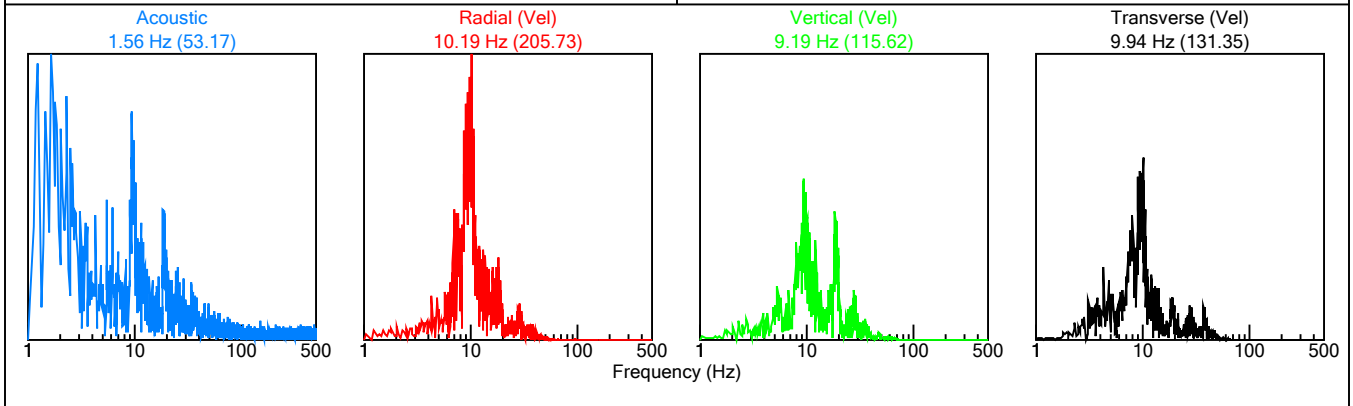


File: 4906201106231527002.dtb  
 Number: 002  
 Date: 6/23/2011  
 Time: 15:27  
 SN: 4906  
 Seis. Trigger: 0.010 in/sec  
 Air Trigger: 148  
 Sample Rate: 1024  
 Duration: 12.0 Seconds  
 Pre-Trigger: 0.50 Seconds  
 Gain: 2.0x  
 Voltage: 7.0

Peaks and Frequencies	Graph Information
PPV Maximum: 0.680 in/sec (9.2559 sec) Acoustic: 123 dBL 0.28 Mb 0.0041 psi 28 Pa @ 14.6 Hz Radial: 0.660 in/sec @ 10.2Hz (9.2314 sec) Vertical: 0.680 in/sec @ 15.0Hz (9.2559 sec) Transverse: 0.640 in/sec @ 7.8Hz (9.4531 sec) Last Calibration Date: 12/13/2010	Duration: -0.500 s To: 12.000 s Acoustic Scale: 40 Pa (10.0 Pa/Div) Seismic Scale: 0.80 in/sec (0.200 in/sec/div) Time Intervals: 1.00 sec



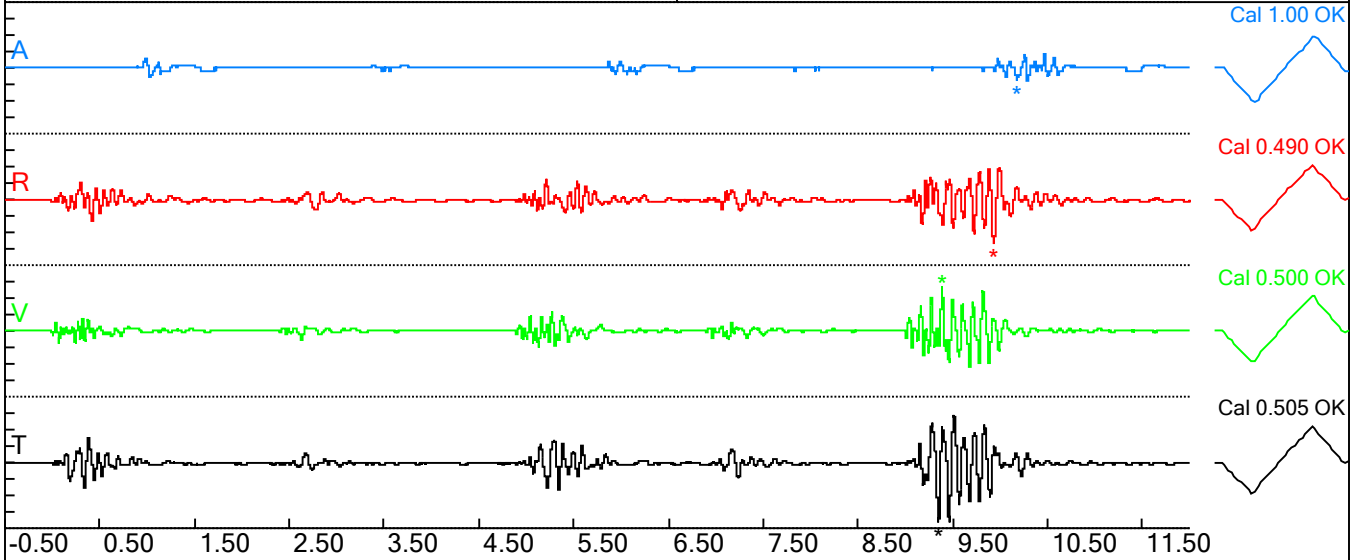
FFT Peak Frequencies	FFT Graph Information
Acoustic: 1.56 Hz (Amp = 53.17) Radial: 10.19 Hz (Amp = 205.73) Vertical: 9.19 Hz (Amp = 115.62) Transverse: 9.94 Hz (Amp = 131.35)	Range: 1 to 500 Hz Acoustic Scale: 53.17 Seismic Scale: 205.73





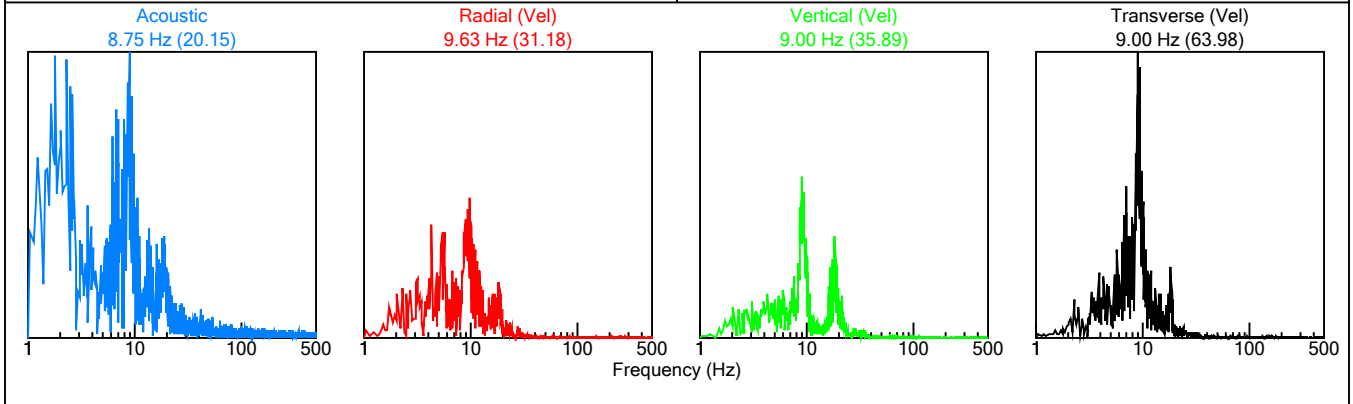
File: 3599201106231527003.dtb  
 Number: 003  
 Date: 6/23/2011  
 Time: 15:27  
 SN: 3599  
 Seis. Trigger: 0.010 in/sec  
 Air Trigger: 142  
 Sample Rate: 1024  
 Duration: 12.0 Seconds  
 Pre-Trigger: 0.50 Seconds  
 Gain: 2.0x  
 Voltage: 6.8

Peaks and Frequencies	Graph Information
PPV Maximum: 0.185 in/sec (9.3496 sec) Acoustic: 112 dBL 0.08 Mb 0.0012 psi 8 Pa @ 12.8 Hz (9.3496 sec) Radial: 0.135 in/sec @ 8.8Hz (9.9307 sec) Vertical: 0.135 in/sec @ 13.5Hz (9.3877 sec) Transverse: 0.185 in/sec @ 10.0Hz (9.3496 sec) Last Calibration Date: 6/10/2011	Duration: -0.500 s To: 12.000 s Acoustic Scale: 40 Pa (10.0 Pa/Div) Seismic Scale: 0.20 in/sec (0.050 in/sec/div) Time Intervals: 1.00 sec



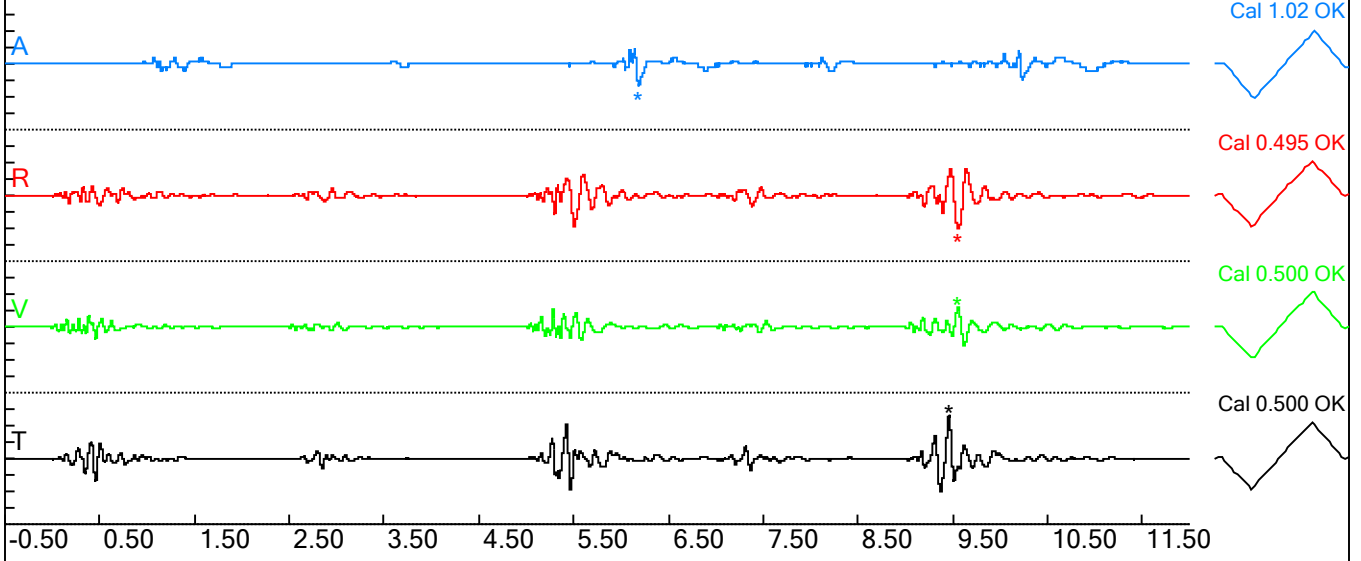
Fast Fourier Transform - Amplitude Spectrum

FFT Peak Frequencies	FFT Graph Information
Acoustic: 8.75 Hz (Amp = 20.15) Radial: 9.63 Hz (Amp = 31.18) Vertical: 9.00 Hz (Amp = 35.89) Transverse: 9.00 Hz (Amp = 63.98)	Range: 1 to 500 Hz Acoustic Scale: 20.15 Seismic Scale: 63.98

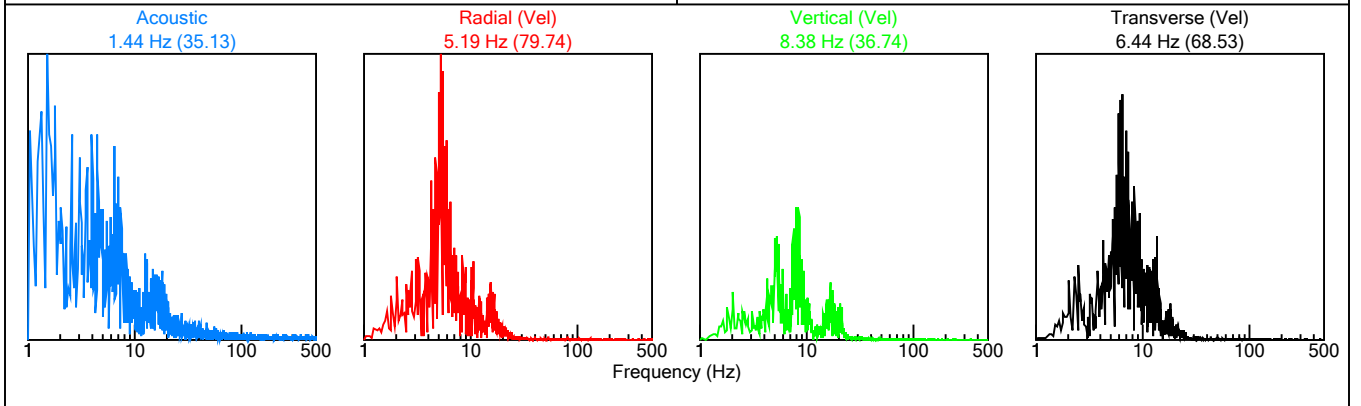


File: 3599201106241519002.dtb  
 Number: 002  
 Date: 6/24/2011  
 Time: 15:19  
 SN: 3599  
 Seis. Trigger: 0.010 in/sec  
 Air Trigger: 142  
 Sample Rate: 1024  
 Duration: 12.0 Seconds  
 Pre-Trigger: 0.50 Seconds  
 Gain: 2.0x  
 Voltage: 6.9

Peaks and Frequencies	Graph Information
PPV Maximum: 0.260 in/sec (9.4590 sec) Acoustic: 117 dBL 0.14 Mb 0.0020 psi 14 Pa @ 5.1 Hz (9.4590 sec) Radial: 0.205 in/sec @ 5.2Hz (9.5518 sec) Vertical: 0.115 in/sec @ 7.0Hz (9.5479 sec) Transverse: 0.260 in/sec @ 7.1Hz (9.4590 sec) Last Calibration Date: 6/10/2011	Duration: -0.500 s To: 12.000 s Acoustic Scale: 40 Pa (10.0 Pa/Div) Seismic Scale: 0.40 in/sec (0.100 in/sec/div) Time Intervals: 1.00 sec

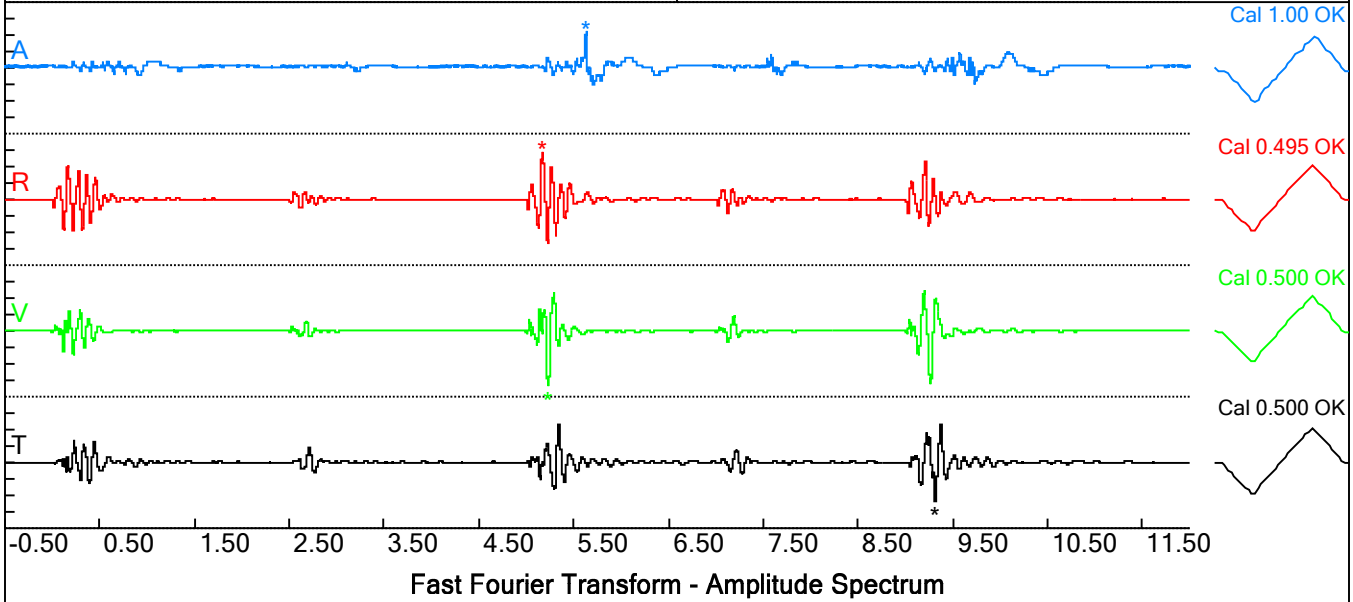


FFT Peak Frequencies	FFT Graph Information
Acoustic: 1.44 Hz (Amp = 35.13) Radial: 5.19 Hz (Amp = 79.74) Vertical: 8.38 Hz (Amp = 36.74) Transverse: 6.44 Hz (Amp = 68.53)	Range: 1 to 500 Hz Acoustic Scale: 35.13 Seismic Scale: 79.74

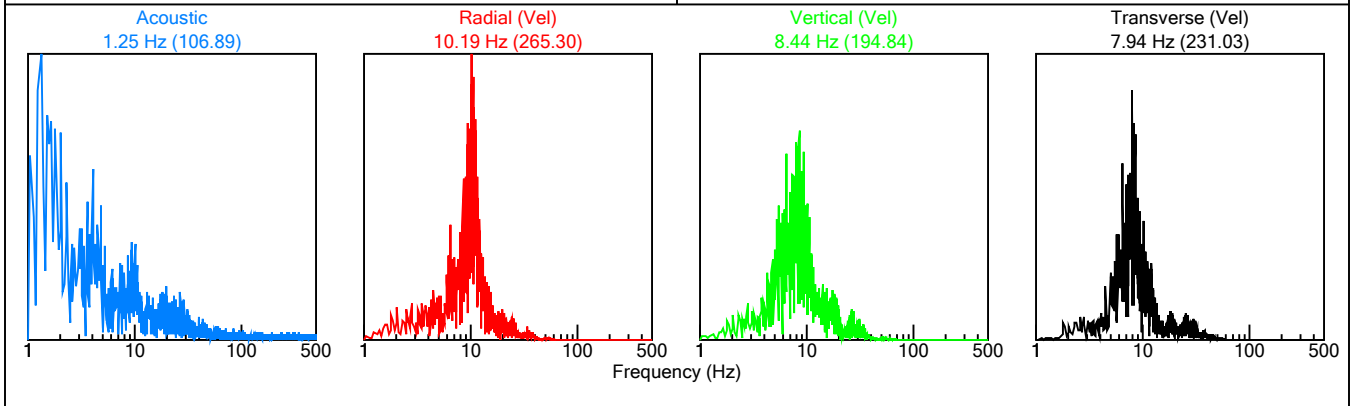


File: 4906201106241520002.dtb  
 Number: 002  
 Date: 6/24/2011  
 Time: 15:20  
 SN: 4906  
 Seis. Trigger: 0.020 in/sec  
 Air Trigger: 148  
 Sample Rate: 1024  
 Duration: 12.0 Seconds  
 Pre-Trigger: 0.50 Seconds  
 Gain: 2.0x  
 Voltage: 7.0

Peaks and Frequencies	Graph Information
PPV Maximum: 1.020 in/sec (5.2295 sec) Acoustic: 127 dBL 0.44 Mb 0.0064 psi 44 Pa @ 8.2 Hz (5.6299 sec) Radial: 0.860 in/sec @ 9.5Hz (5.1689 sec) Vertical: 1.020 in/sec @ 10.0Hz (5.2295 sec) Transverse: 0.720 in/sec @ 7.0Hz (9.3125 sec) Last Calibration Date: 12/13/2010	Duration: -0.500 s To: 12.000 s Acoustic Scale: 80 Pa (20.0 Pa/Div) Seismic Scale: 1.20 in/sec (0.300 in/sec/div) Time Intervals: 1.00 sec

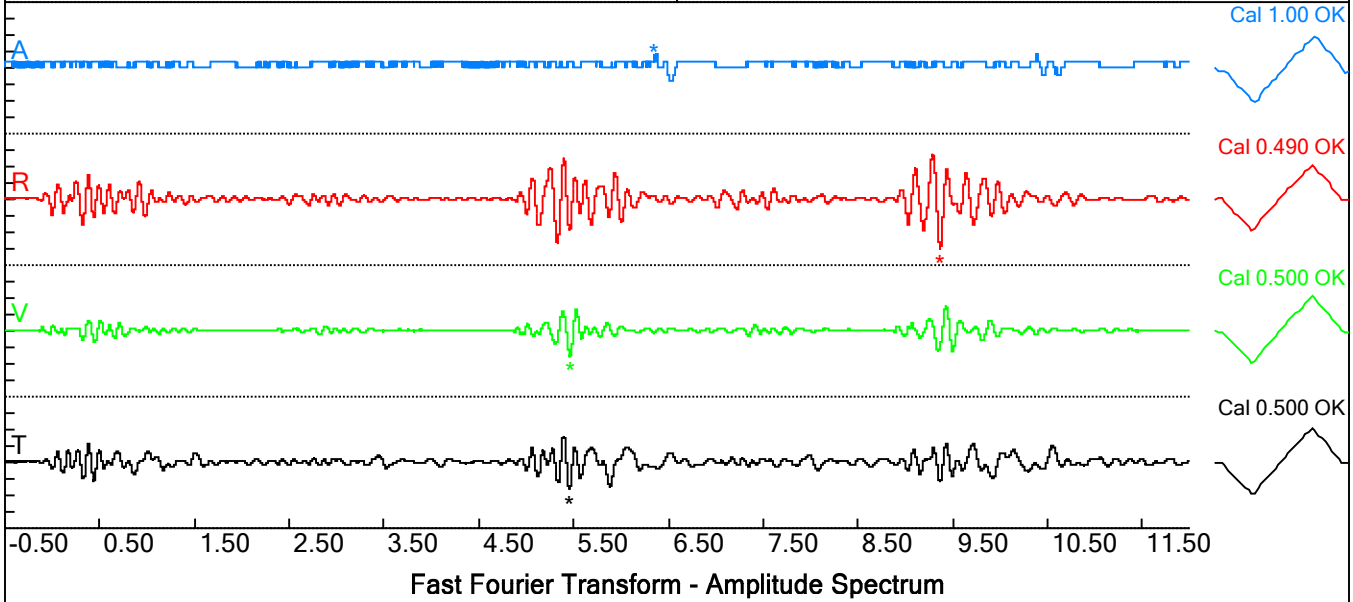


FFT Peak Frequencies	FFT Graph Information
Acoustic: 1.25 Hz (Amp = 106.89) Radial: 10.19 Hz (Amp = 265.30) Vertical: 8.44 Hz (Amp = 194.84) Transverse: 7.94 Hz (Amp = 231.03)	Range: 1 to 500 Hz Acoustic Scale: 106.89 Seismic Scale: 265.30

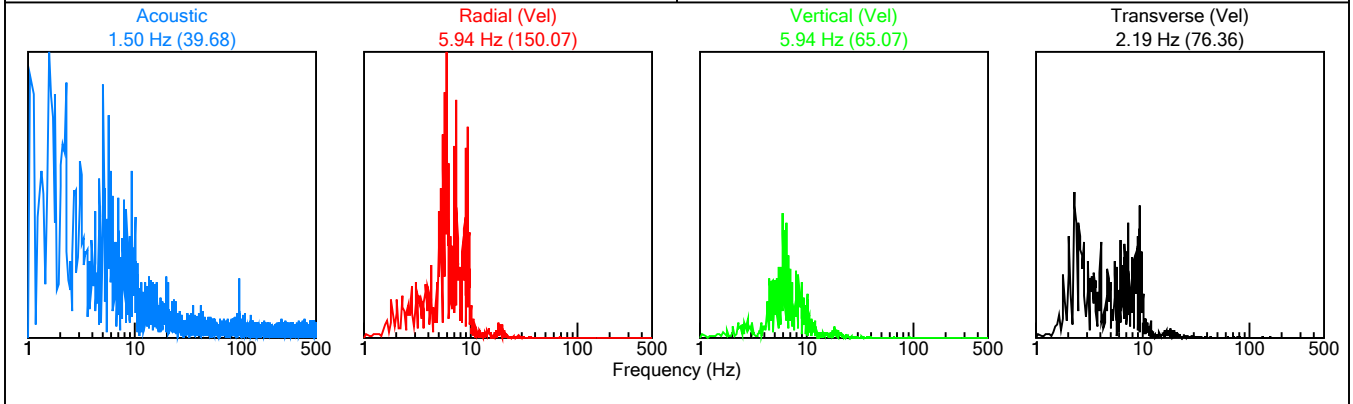


File: 4762201106241520002.dtb  
 Number: 002  
 Date: 6/24/2011  
 Time: 15:20  
 SN: 4762  
 Seis. Trigger: 0.100 in/sec  
 Air Trigger: 148  
 Sample Rate: 1024  
 Duration: 12.0 Seconds  
 Pre-Trigger: 0.50 Seconds  
 Gain: 2.0x  
 Voltage: 7.0

Peaks and Frequencies	Graph Information
PPV Maximum: 0.305 in/sec (9.3643 sec) Acoustic: 112 dBL 0.08 Mb 0.0012 psi 8 Pa @ 0.0 Hz (6.417 sec) Radial: 0.305 in/sec @ 6.4Hz (9.3643 sec) Vertical: 0.155 in/sec @ 6.4Hz (5.4629 sec) Transverse: 0.170 in/sec @ 8.1Hz (5.4531 sec) Last Calibration Date: 6/8/2010	Duration: -0.500 s To: 12.000 s Acoustic Scale: 40 Pa (10.0 Pa/Div) Seismic Scale: 0.40 in/sec (0.100 in/sec/div) Time Intervals: 1.00 sec

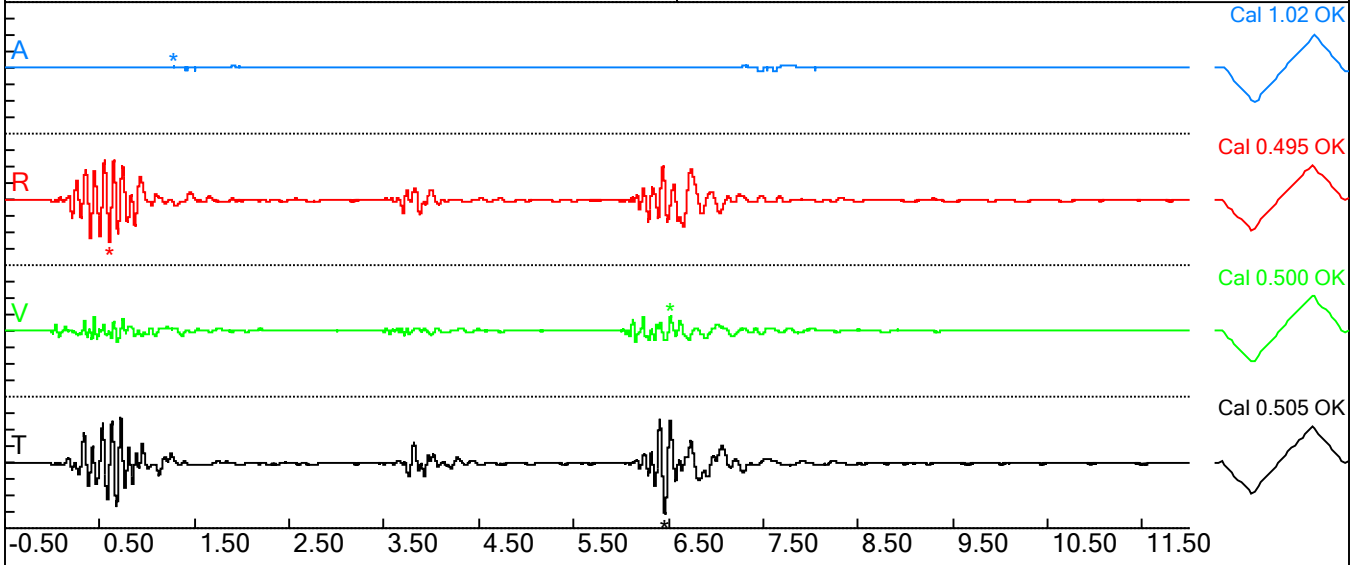


FFT Peak Frequencies	FFT Graph Information
Acoustic: 1.50 Hz (Amp = 39.68) Radial: 5.94 Hz (Amp = 150.07) Vertical: 5.94 Hz (Amp = 65.07) Transverse: 2.19 Hz (Amp = 76.36)	Range: 1 to 500 Hz Acoustic Scale: 39.68 Seismic Scale: 150.07



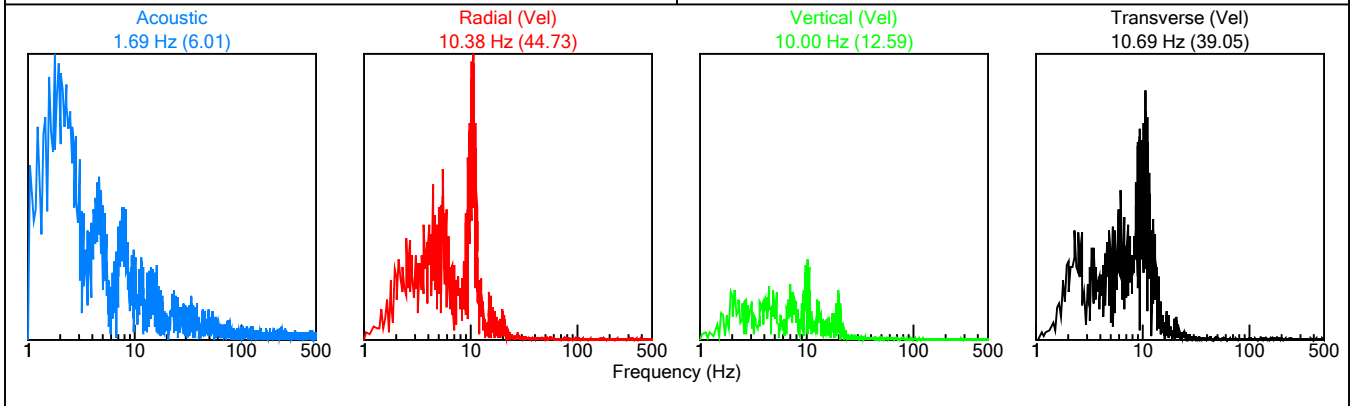
File: 3599201106291115006.dtb  
 Number: 006  
 Date: 6/29/2011  
 Time: 11:15  
 SN: 3599  
 Seis. Trigger: 0.010 in/sec  
 Air Trigger: 142  
 Sample Rate: 1024  
 Duration: 12.0 Seconds  
 Pre-Trigger: 0.50 Seconds  
 Gain: 2.0x  
 Voltage: 6.9

Peaks and Frequencies	Graph Information
PPV Maximum: 0.160 in/sec (6.4600 sec) Acoustic: 100 dBL 0.02 Mb 0.0003 psi 2 Pa @ 0.0 Hz (1.2760 sec) Radial: 0.130 in/sec @ 10.2Hz (0.6016 sec) Vertical: 0.050 in/sec @ 9.3Hz (6.5205 sec) Transverse: 0.160 in/sec @ 8.5Hz (6.4600 sec) Last Calibration Date: 6/10/2011	Duration: -0.500 s To: 12.000 s Acoustic Scale: 40 Pa (10.0 Pa/Div) Seismic Scale: 0.20 in/sec (0.050 in/sec/div) Time Intervals: 1.00 sec



Fast Fourier Transform - Amplitude Spectrum

FFT Peak Frequencies	FFT Graph Information
Acoustic: 1.69 Hz (Amp = 6.01) Radial: 10.38 Hz (Amp = 44.73) Vertical: 10.00 Hz (Amp = 12.59) Transverse: 10.69 Hz (Amp = 39.05)	Range: 1 to 500 Hz Acoustic Scale: 6.01 Seismic Scale: 44.73



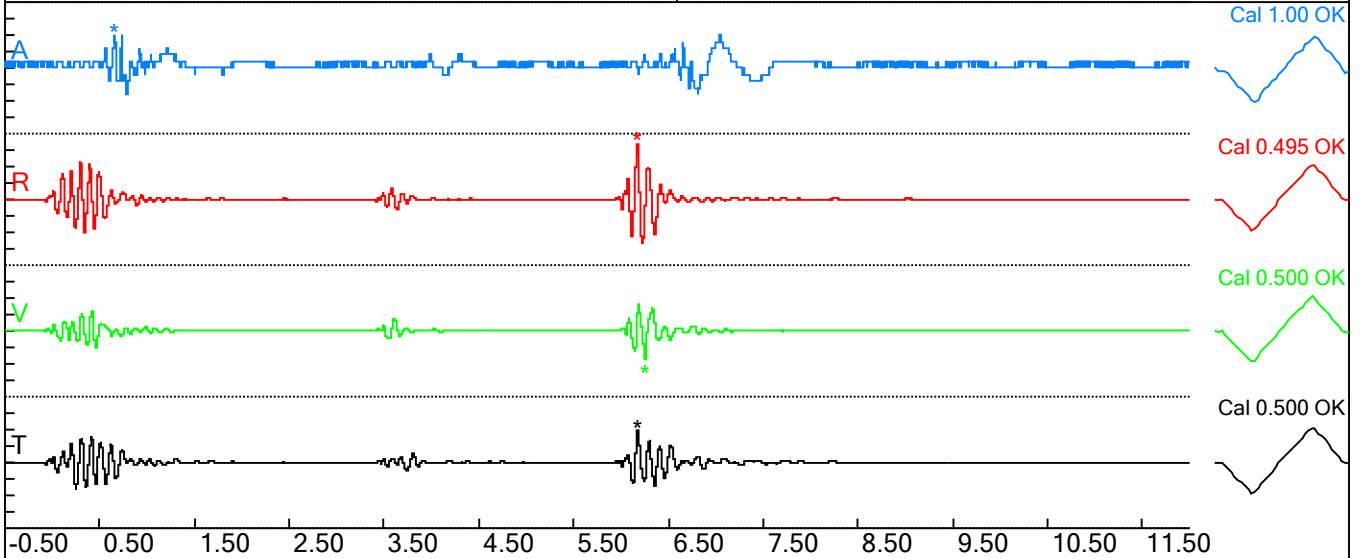
File: 4906201106291116005.dtb  
 Number: 005  
 Date: 6/29/2011  
 Time: 11:16  
 SN: 4906  
 Seis. Trigger: 0.050 in/sec  
 Air Trigger: 148  
 Sample Rate: 1024  
 Duration: 12.0 Seconds  
 Pre-Trigger: 0.50 Seconds  
 Gain: 2.0x  
 Voltage: 7.0

Peaks and Frequencies

PPV Maximum: 0.680 in/sec (6.1709 sec)  
 Acoustic: 120 dBL 0.20 Mb 0.0029 psi 20 Pa @ 11.6 Hz  
 Radial: 0.680 in/sec @ 8.6Hz (6.1709 sec)  
 Vertical: 0.350 in/sec @ 8.9Hz (6.2520 sec)  
 Transverse: 0.380 in/sec @ 8.0Hz (6.1748 sec)  
 Last Calibration Date: 12/13/2010

Graph Information

Duration: -0.500 s To: 12.000 s  
 Acoustic Scale: 40 Pa (10.0 Pa/Div)  
 Seismic Scale: 0.80 in/sec (0.200 in/sec/div)  
 Time Intervals: 1.00 sec



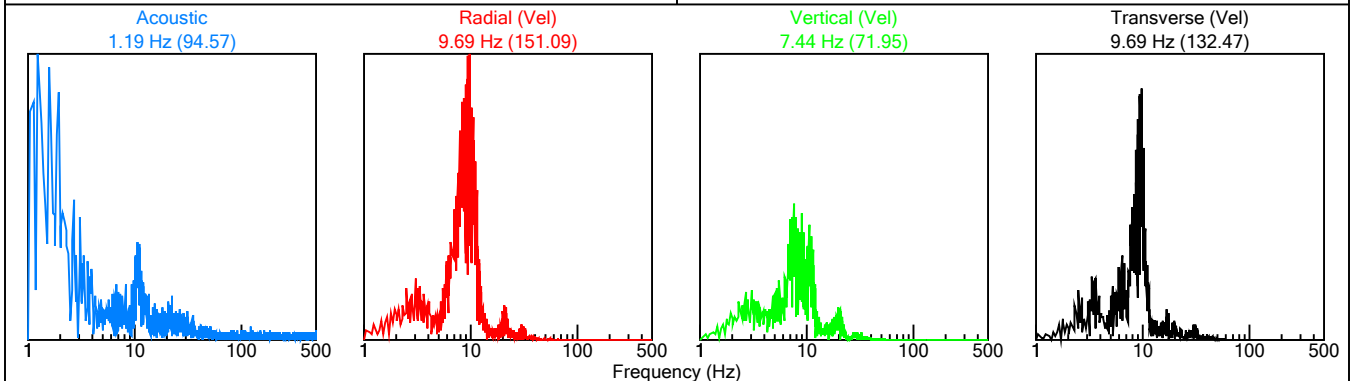
Fast Fourier Transform - Amplitude Spectrum

FFT Peak Frequencies

Acoustic: 1.19 Hz (Amp = 94.57)  
 Radial: 9.69 Hz (Amp = 151.09)  
 Vertical: 7.44 Hz (Amp = 71.95)  
 Transverse: 9.69 Hz (Amp = 132.47)

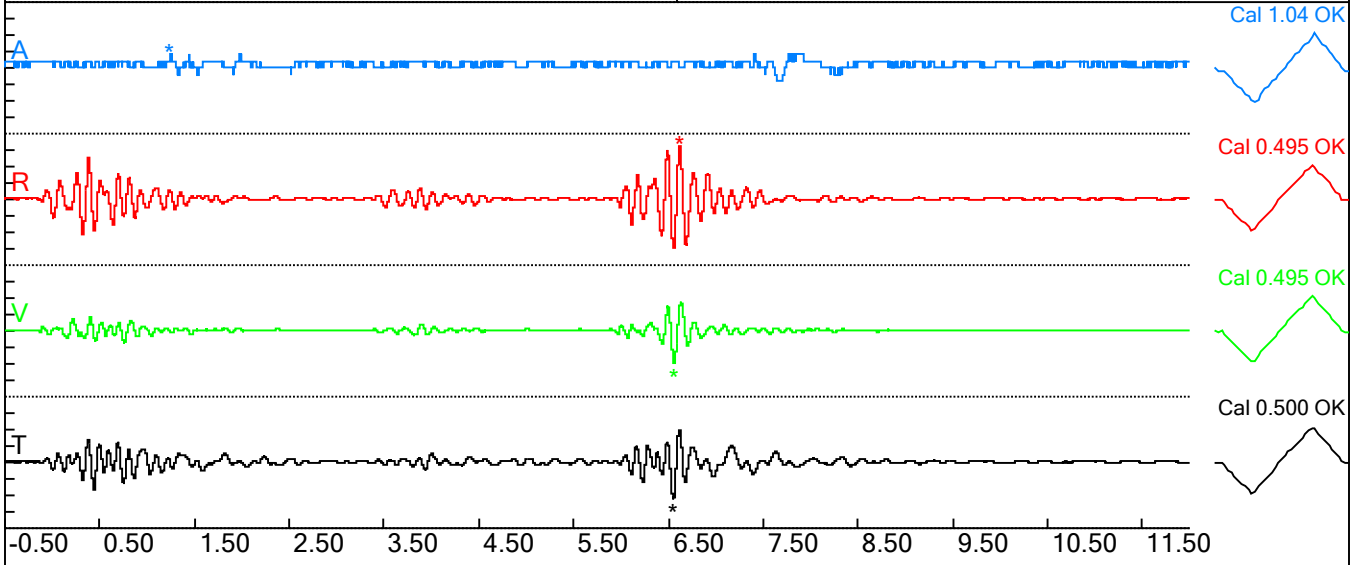
FFT Graph Information

Range: 1 to 500 Hz  
 Acoustic Scale: 94.57  
 Seismic Scale: 151.09

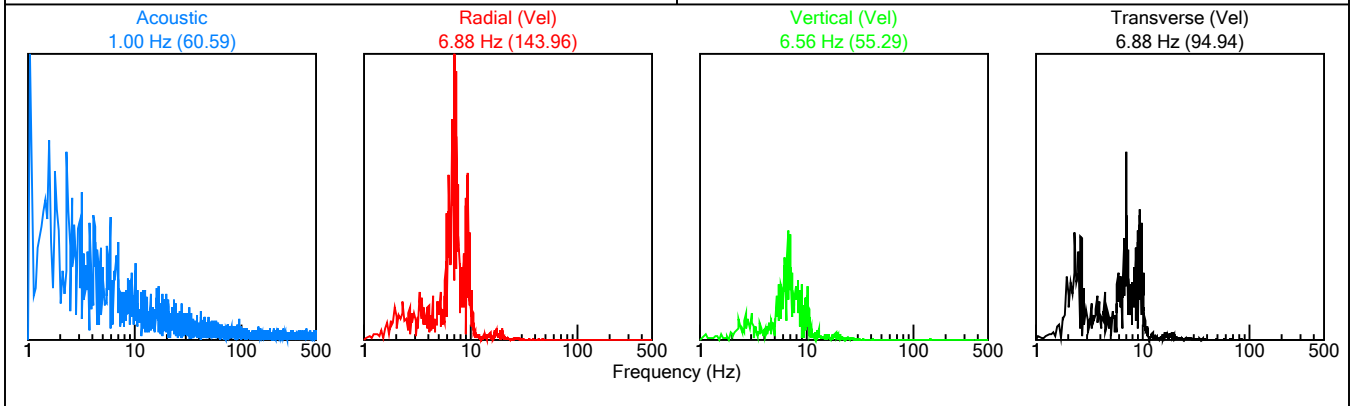


File: 4762201106291116005.dtb  
 Number: 005  
 Date: 6/29/2011  
 Time: 11:16  
 SN: 4762  
 Seis. Trigger: 0.100 in/sec  
 Air Trigger: 148  
 Sample Rate: 1024  
 Duration: 12.0 Seconds  
 Pre-Trigger: 0.50 Seconds  
 Gain: 2.0x  
 Voltage: 6.9

Peaks and Frequencies	Graph Information
PPV Maximum: 0.320 in/sec (6.6162 sec) Acoustic: 112 dBL 0.08 Mb 0.0012 psi 8 Pa @ 0.0 Hz (1.0000 sec) Radial: 0.320 in/sec @ 7.3Hz (6.6162 sec) Vertical: 0.200 in/sec @ 7.3Hz (6.5576 sec) Transverse: 0.220 in/sec @ 7.4Hz (6.5479 sec) Last Calibration Date: 6/8/2010	Duration: -0.500 s To: 12.000 s Acoustic Scale: 40 Pa (10.0 Pa/Div) Seismic Scale: 0.40 in/sec (0.100 in/sec/div) Time Intervals: 1.00 sec

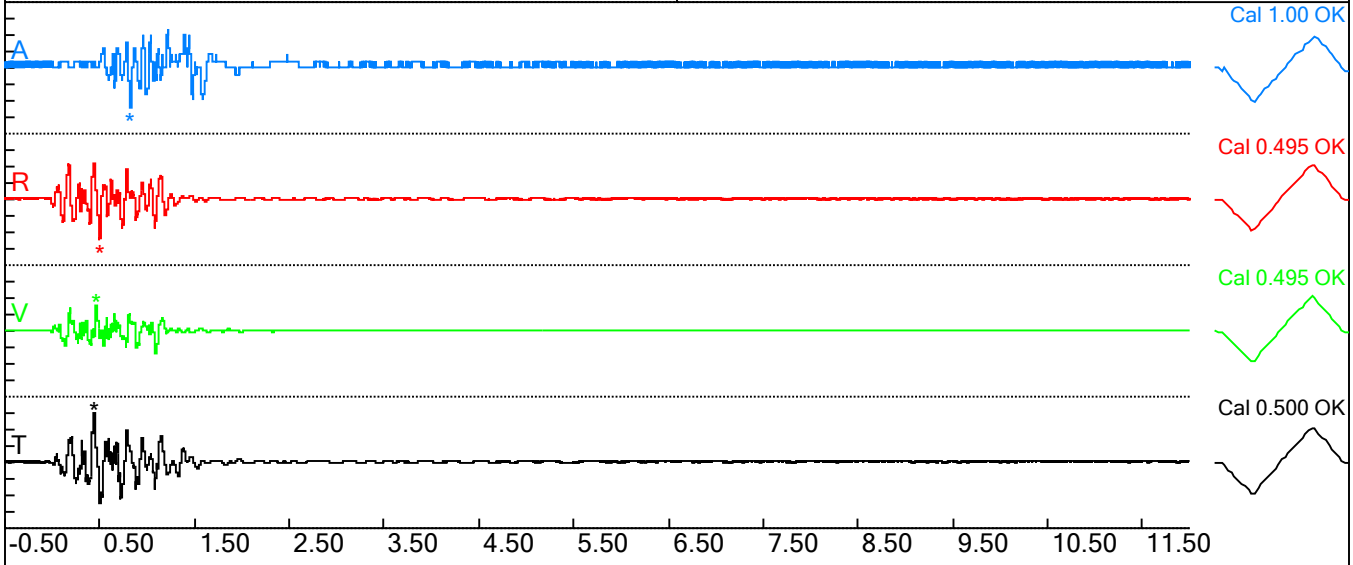


FFT Peak Frequencies	FFT Graph Information
Acoustic: 1.00 Hz (Amp = 60.59) Radial: 6.88 Hz (Amp = 143.96) Vertical: 6.56 Hz (Amp = 55.29) Transverse: 6.88 Hz (Amp = 94.94)	Range: 1 to 500 Hz Acoustic Scale: 60.59 Seismic Scale: 143.96



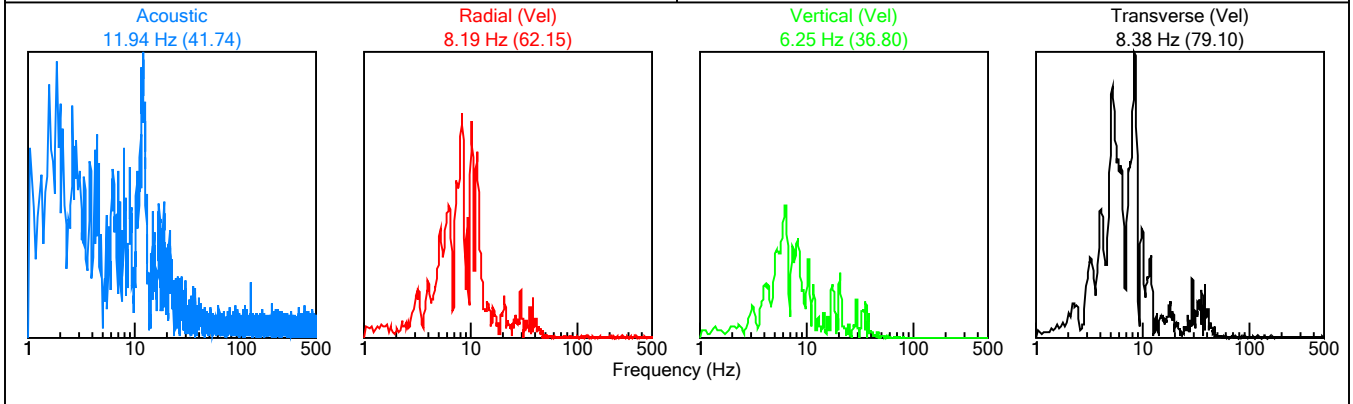
File: 4906201106291533001.dtb  
 Number: 001  
 Date: 6/29/2011  
 Time: 15:33  
 SN: 4906  
 Seis. Trigger: 0.050 in/sec  
 Air Trigger: 148  
 Sample Rate: 1024  
 Duration: 12.0 Seconds  
 Pre-Trigger: 0.50 Seconds  
 Gain: 2.0x  
 Voltage: 7.0

Peaks and Frequencies	Graph Information
PPV Maximum: 0.450 in/sec (0.4424 sec) Acoustic: 122 dBL 0.24 Mb 0.0035 psi 24 Pa @ 10.8 Hz (0.4191 sec) Radial: 0.365 in/sec @ 10.0Hz (0.5010 sec) Vertical: 0.235 in/sec @ 10.8Hz (0.4639 sec) Transverse: 0.450 in/sec @ 7.6Hz (0.4424 sec) Last Calibration Date: 12/13/2010	Duration: -0.500 s To: 12.000 s Acoustic Scale: 40 Pa (10.0 Pa/Div) Seismic Scale: 0.60 in/sec (0.150 in/sec/div) Time Intervals: 1.00 sec



Fast Fourier Transform - Amplitude Spectrum

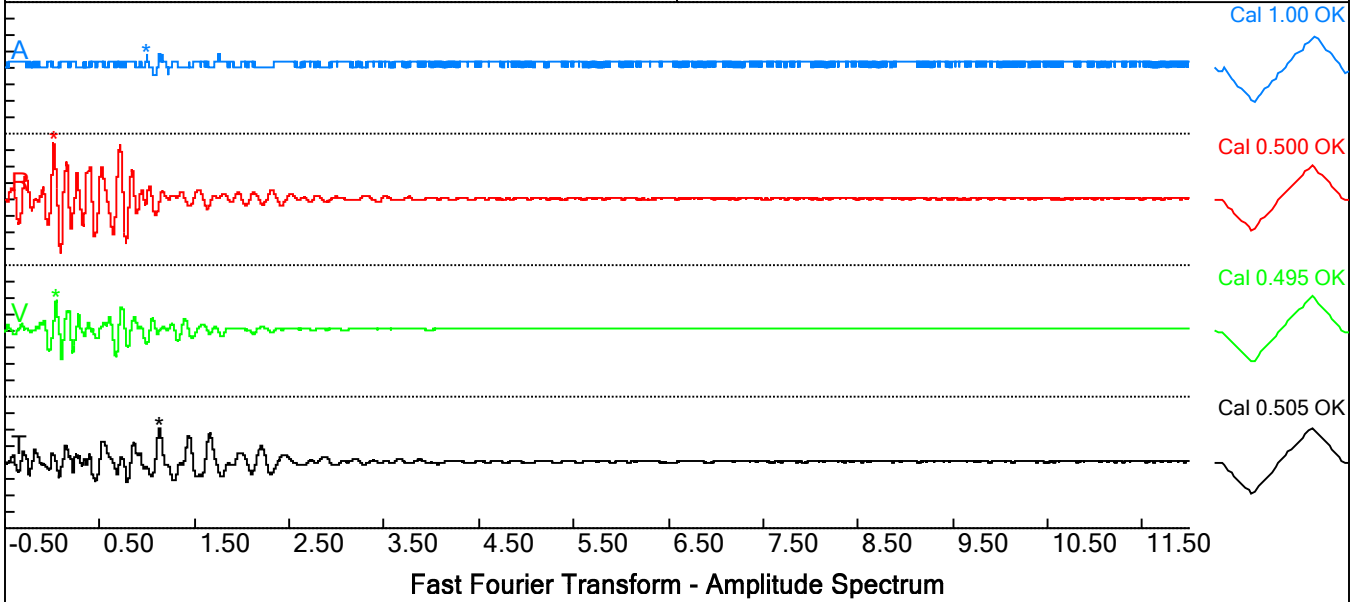
FFT Peak Frequencies	FFT Graph Information
Acoustic: 11.94 Hz (Amp = 41.74) Radial: 8.19 Hz (Amp = 62.15) Vertical: 6.25 Hz (Amp = 36.80) Transverse: 8.38 Hz (Amp = 79.10)	Range: 1 to 500 Hz Acoustic Scale: 41.74 Seismic Scale: 79.10



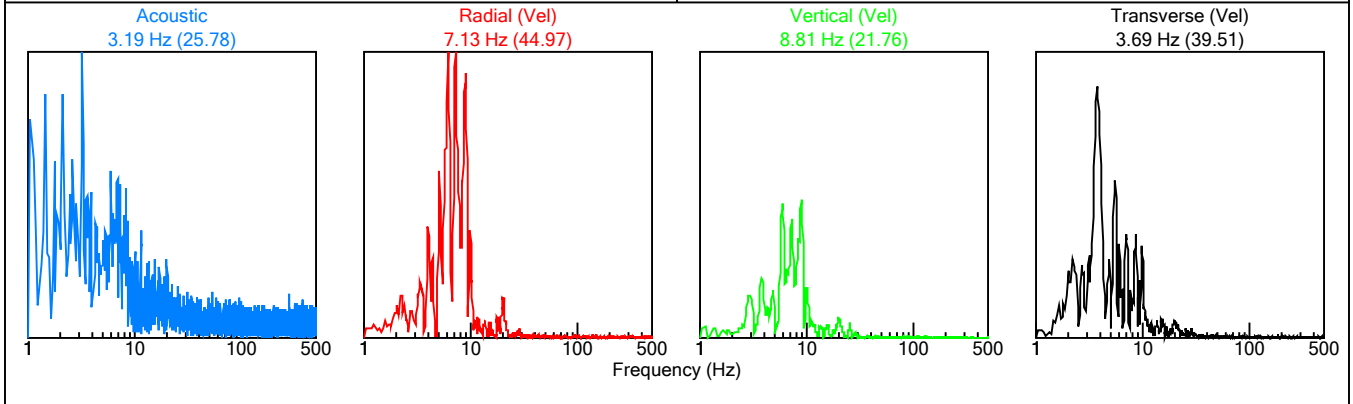


File: 4762201106291533001.dtb  
 Number: 001  
 Date: 6/29/2011  
 Time: 15:33  
 SN: 4762  
 Seis. Trigger: 0.100 in/sec  
 Air Trigger: 148  
 Sample Rate: 1024  
 Duration: 12.0 Seconds  
 Pre-Trigger: 0.50 Seconds  
 Gain: 2.0x  
 Voltage: 6.9

Peaks and Frequencies	Graph Information
PPV Maximum: 0.175 in/sec (0.0146 sec) Acoustic: 112 dBL 0.08 Mb 0.0012 psi 8 Pa @ 0.0 Hz (0.0012 sec) Radial: 0.175 in/sec @ 7.5Hz (0.0146 sec) Vertical: 0.095 in/sec @ 8.0Hz (0.0371 sec) Transverse: 0.105 in/sec @ 5.2Hz (1.1279 sec) Last Calibration Date: 6/8/2010	Duration: -0.500 s To: 12.000 s Acoustic Scale: 40 Pa (10.0 Pa/Div) Seismic Scale: 0.20 in/sec (0.050 in/sec/div) Time Intervals: 1.00 sec

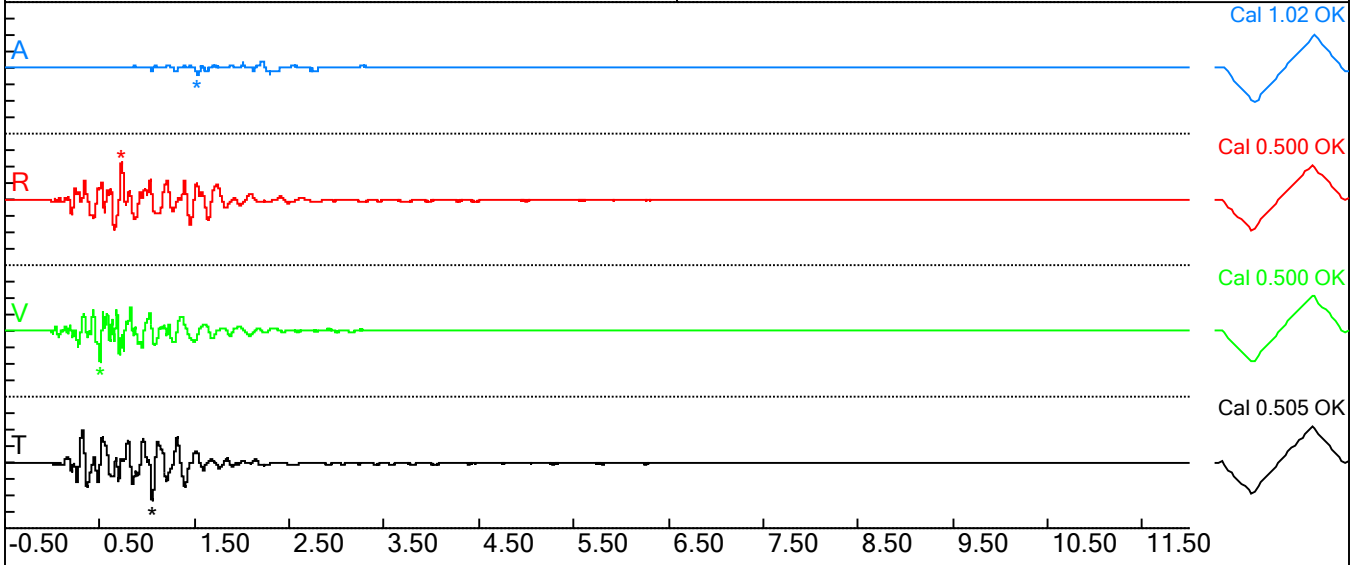


FFT Peak Frequencies	FFT Graph Information
Acoustic: 3.19 Hz (Amp = 25.78) Radial: 7.13 Hz (Amp = 44.97) Vertical: 8.81 Hz (Amp = 21.76) Transverse: 3.69 Hz (Amp = 39.51)	Range: 1 to 500 Hz Acoustic Scale: 25.78 Seismic Scale: 44.97



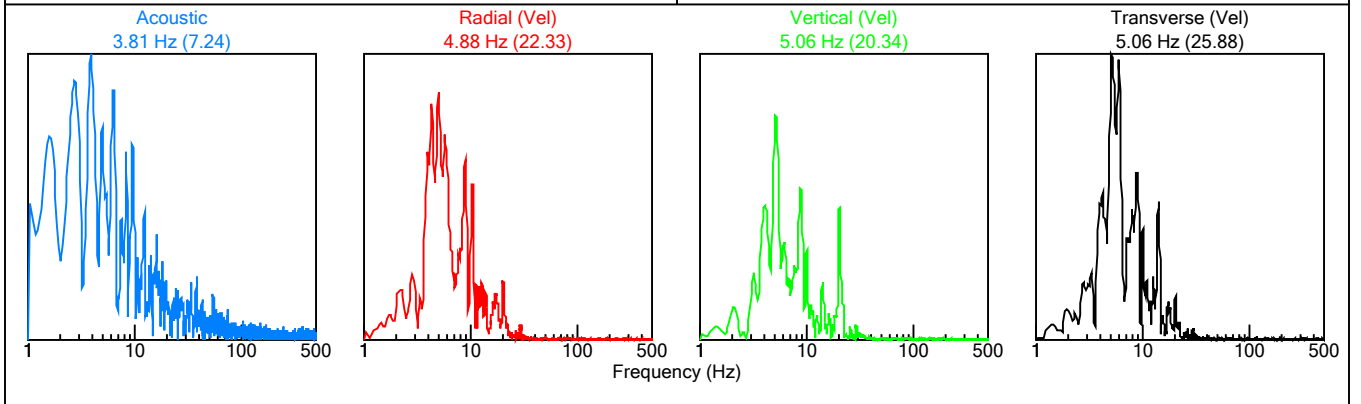
File: 3599201106291533007.dtb  
 Number: 007  
 Date: 6/29/2011  
 Time: 15:33  
 SN: 3599  
 Seis. Trigger: 0.010 in/sec  
 Air Trigger: 142  
 Sample Rate: 1024  
 Duration: 12.0 Seconds  
 Pre-Trigger: 0.50 Seconds  
 Gain: 2.0x  
 Voltage: 6.9

Peaks and Frequencies	Graph Information
PPV Maximum: 0.120 in/sec (1.0547 sec) Acoustic: 106 dBL 0.04 Mb 0.0006 psi 4 Pa @ 0.0 Hz (1.5200 sec) Radial: 0.115 in/sec @ 8.8Hz (0.7266 sec) Vertical: 0.095 in/sec @ 7.1Hz (0.5049 sec) Transverse: 0.120 in/sec @ 8.8Hz (1.0547 sec) Last Calibration Date: 6/10/2011	Duration: -0.500 s To: 12.000 s Acoustic Scale: 40 Pa (10.0 Pa/Div) Seismic Scale: 0.20 in/sec (0.050 in/sec/div) Time Intervals: 1.00 sec



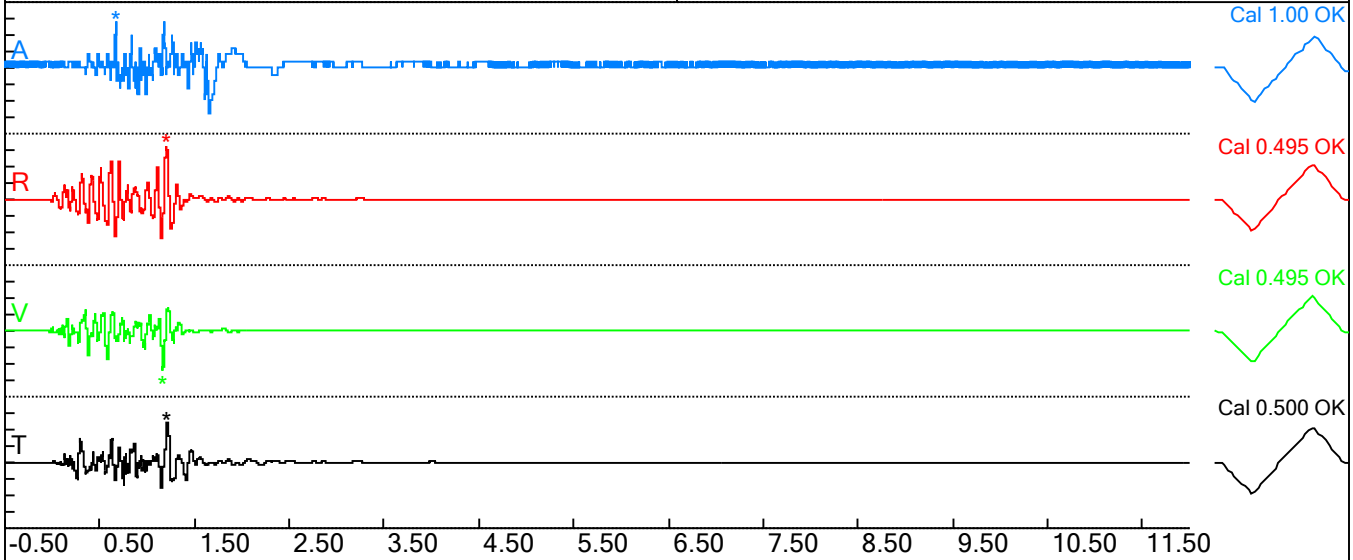
Fast Fourier Transform - Amplitude Spectrum

FFT Peak Frequencies	FFT Graph Information
Acoustic: 3.81 Hz (Amp = 7.24) Radial: 4.88 Hz (Amp = 22.33) Vertical: 5.06 Hz (Amp = 20.34) Transverse: 5.06 Hz (Amp = 25.88)	Range: 1 to 500 Hz Acoustic Scale: 7.24 Seismic Scale: 25.88



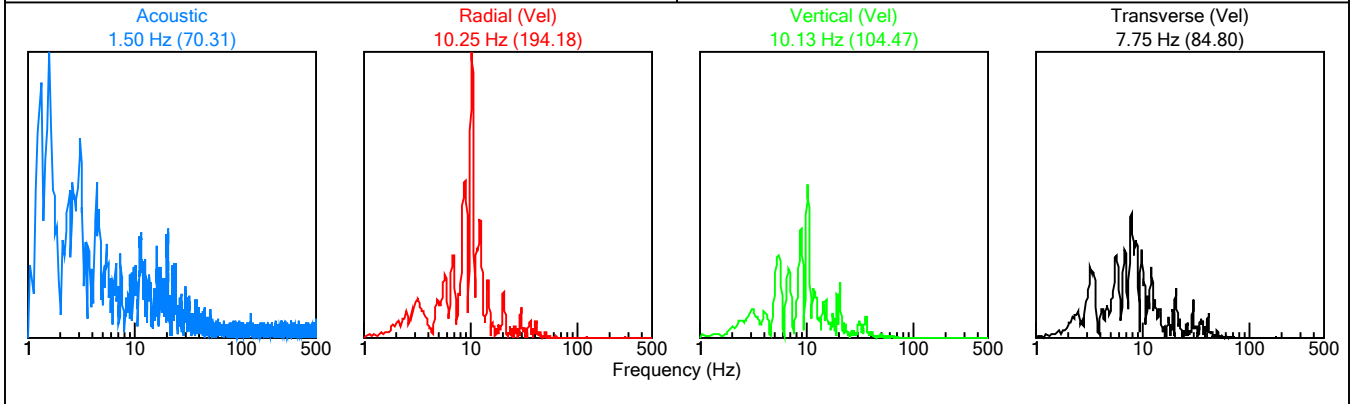
File: 4906201106291844002.dtb  
 Number: 002  
 Date: 6/29/2011  
 Time: 18:44  
 SN: 4906  
 Seis. Trigger: 0.050 in/sec  
 Air Trigger: 148  
 Sample Rate: 1024  
 Duration: 12.0 Seconds  
 Pre-Trigger: 0.50 Seconds  
 Gain: 2.0x  
 Voltage: 7.0

Peaks and Frequencies	Graph Information
PPV Maximum: 0.820 in/sec (1.2021 sec) Acoustic: 123 dBL 0.28 Mb 0.0041 psi 28 Pa @ 18.2 Hz Radial: 0.820 in/sec @ 8.6Hz (1.2021 sec) Vertical: 0.600 in/sec @ 9.3Hz (1.1641 sec) Transverse: 0.600 in/sec @ 7.3Hz (1.2061 sec) Last Calibration Date: 12/13/2010	Duration: -0.500 s To: 12.000 s Acoustic Scale: 40 Pa (10.0 Pa/Div) Seismic Scale: 1.00 in/sec (0.250 in/sec/div) Time Intervals: 1.00 sec



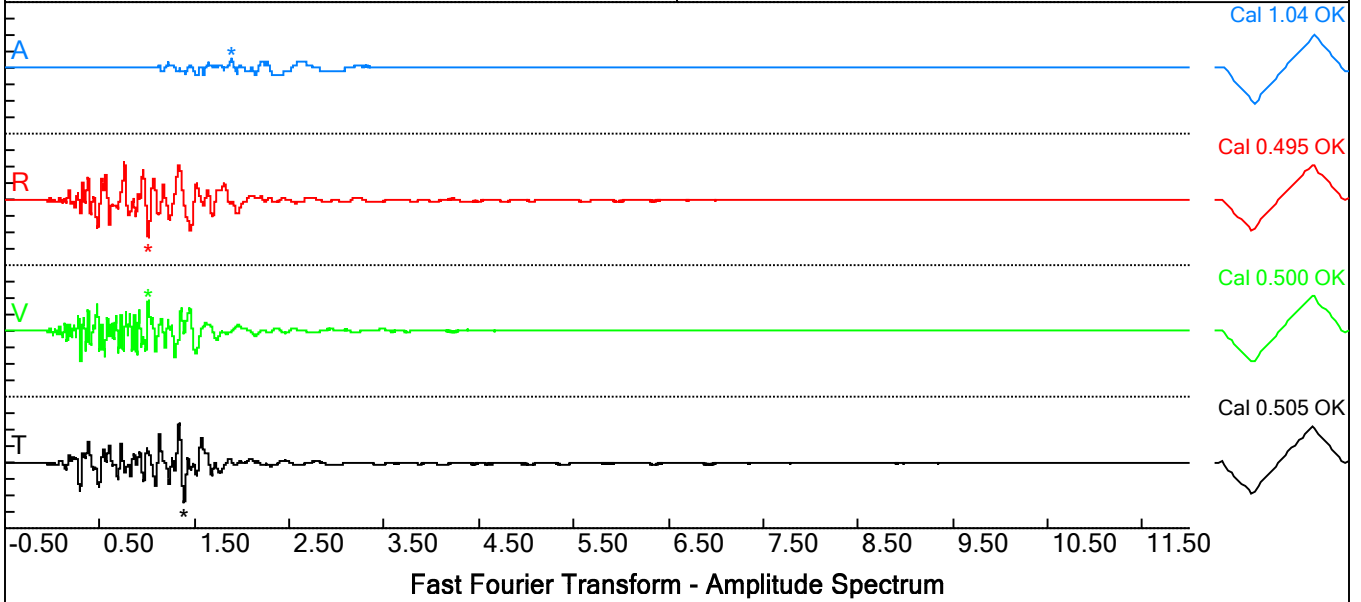
Fast Fourier Transform - Amplitude Spectrum

FFT Peak Frequencies	FFT Graph Information
Acoustic: 1.50 Hz (Amp = 70.31) Radial: 10.25 Hz (Amp = 194.18) Vertical: 10.13 Hz (Amp = 104.47) Transverse: 7.75 Hz (Amp = 84.80)	Range: 1 to 500 Hz Acoustic Scale: 70.31 Seismic Scale: 194.18

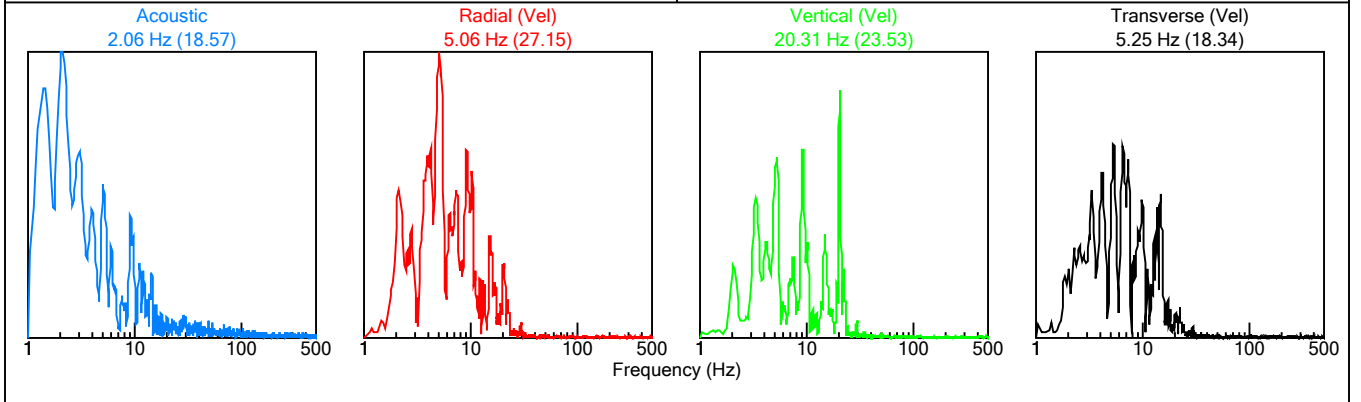


File: 3599201106291844009.dtb  
 Number: 009  
 Date: 6/29/2011  
 Time: 18:44  
 SN: 3599  
 Seis. Trigger: 0.010 in/sec  
 Air Trigger: 142  
 Sample Rate: 1024  
 Duration: 12.0 Seconds  
 Pre-Trigger: 0.50 Seconds  
 Gain: 2.0x  
 Voltage: 6.9

Peaks and Frequencies	Graph Information
PPV Maximum: 0.125 in/sec (1.3877 sec) Acoustic: 110 dBL 0.06 Mb 0.0009 psi 6 Pa @ 11.6 Hz (1.0107 sec) Radial: 0.120 in/sec @ 9.1Hz (1.0107 sec) Vertical: 0.095 in/sec @ 6.9Hz (1.0107 sec) Transverse: 0.125 in/sec @ 8.6Hz (1.3877 sec) Last Calibration Date: 6/10/2011	Duration: -0.500 s To: 12.000 s Acoustic Scale: 40 Pa (10.0 Pa/Div) Seismic Scale: 0.20 in/sec (0.050 in/sec/div) Time Intervals: 1.00 sec

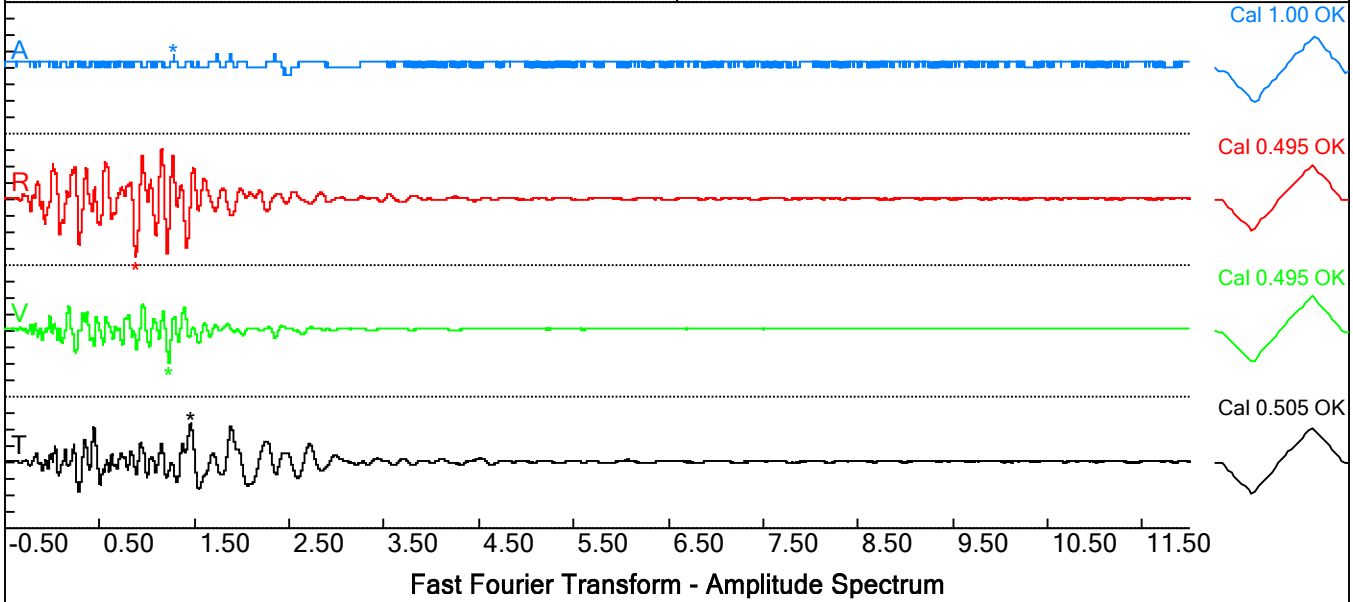


FFT Peak Frequencies	FFT Graph Information
Acoustic: 2.06 Hz (Amp = 18.57) Radial: 5.06 Hz (Amp = 27.15) Vertical: 20.31 Hz (Amp = 23.53) Transverse: 5.25 Hz (Amp = 18.34)	Range: 1 to 500 Hz Acoustic Scale: 18.57 Seismic Scale: 27.15



File: 4762201106291845003.dtb  
 Number: 003  
 Date: 6/29/2011  
 Time: 18:45  
 SN: 4762  
 Seis. Trigger: 0.100 in/sec  
 Air Trigger: 148  
 Sample Rate: 1024  
 Duration: 12.0 Seconds  
 Pre-Trigger: 0.50 Seconds  
 Gain: 2.0x  
 Voltage: 6.9

Peaks and Frequencies	Graph Information
PPV Maximum: 0.175 in/sec (0.8779 sec) Acoustic: 112 dBL 0.08 Mb 0.0012 psi 8 Pa @ 0.0 Hz (1.2741 sec) Radial: 0.175 in/sec @ 6.7Hz (0.8779 sec) Vertical: 0.095 in/sec @ 8.1Hz (1.2246 sec) Transverse: 0.120 in/sec @ 3.1Hz (1.4590 sec) Last Calibration Date: 6/8/2010	Duration: -0.500 s To: 12.000 s Acoustic Scale: 40 Pa (10.0 Pa/Div) Seismic Scale: 0.20 in/sec (0.050 in/sec/div) Time Intervals: 1.00 sec



FFT Peak Frequencies	FFT Graph Information
Acoustic: 1.00 Hz (Amp = 28.73) Radial: 5.50 Hz (Amp = 51.27) Vertical: 6.19 Hz (Amp = 21.40) Transverse: 3.94 Hz (Amp = 48.47)	Range: 1 to 500 Hz Acoustic Scale: 28.73 Seismic Scale: 51.27

