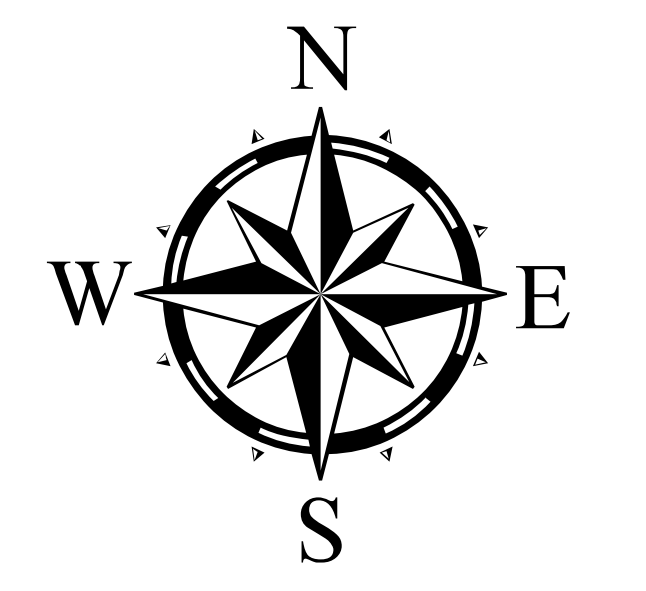
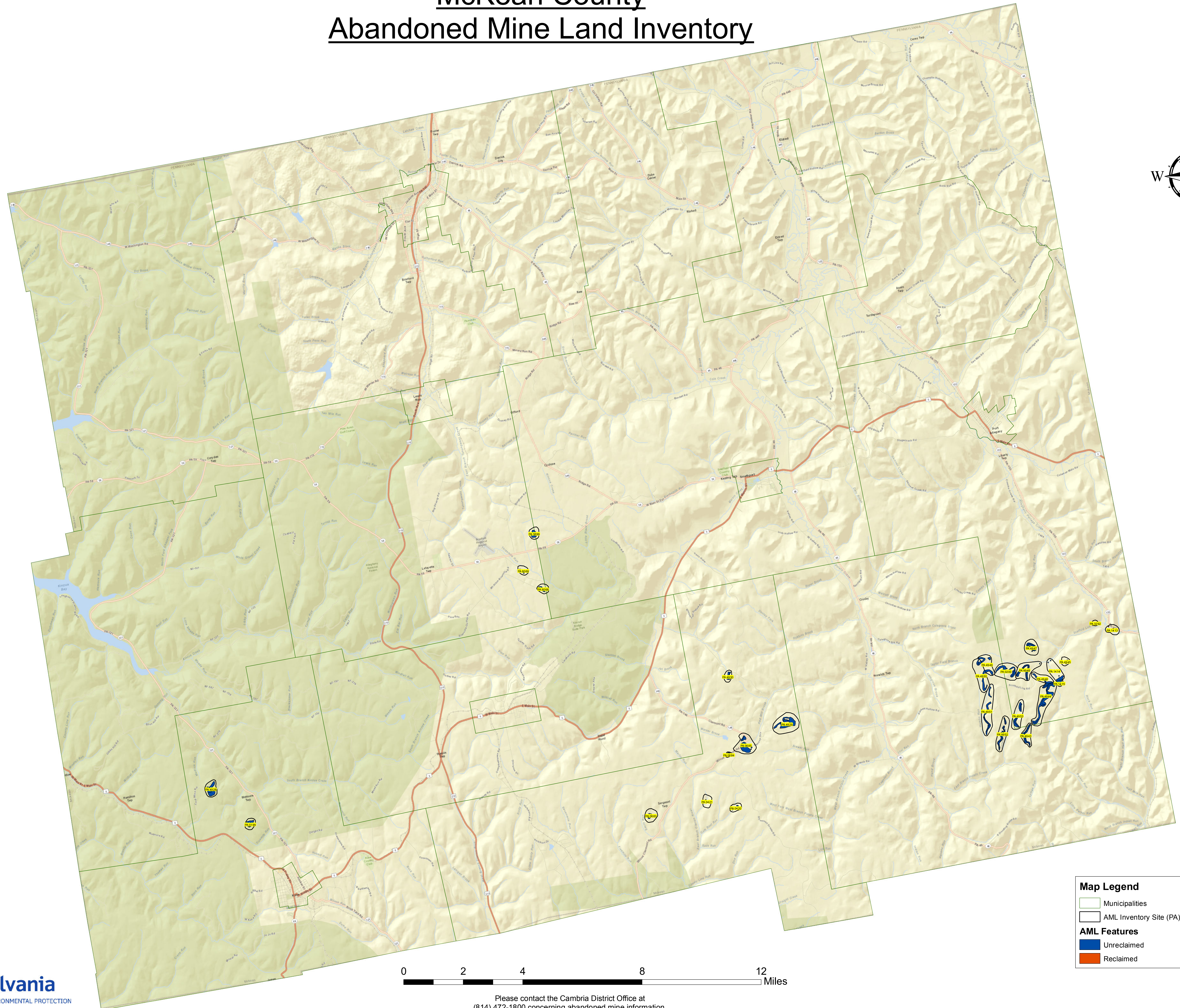


McKean County Abandoned Mine Land Inventory



Map Legend	
	Municipalities
	AML Inventory Site (PA)
AML Features	
	Unreclaimed
	Reclaimed

Please contact the Cambria District Office at
(814) 472-1800 concerning abandoned mine information.



Map Prepared By: Katelyn I. Smith
Date: 12/27/2013
Data Source: Bureau of Abandoned Mine Reclamation
Projection: North_America_Abers_Equal_Area_Conic

For Information only
Priority 1 (P1): An AML problem concerning the protection of public health, safety, and property from extreme danger of adverse effects of mining practices or adjacent land and water reclamation.
Priority 2 (P2): An AML problem concerning the protection of public health and safety from adverse effects of mining practices or adjacent land and water reclamation.
Priority 3 (P3): An AML problem concerning the restoration of land and water resources and the environment previously degraded by adverse effects of mining practices.