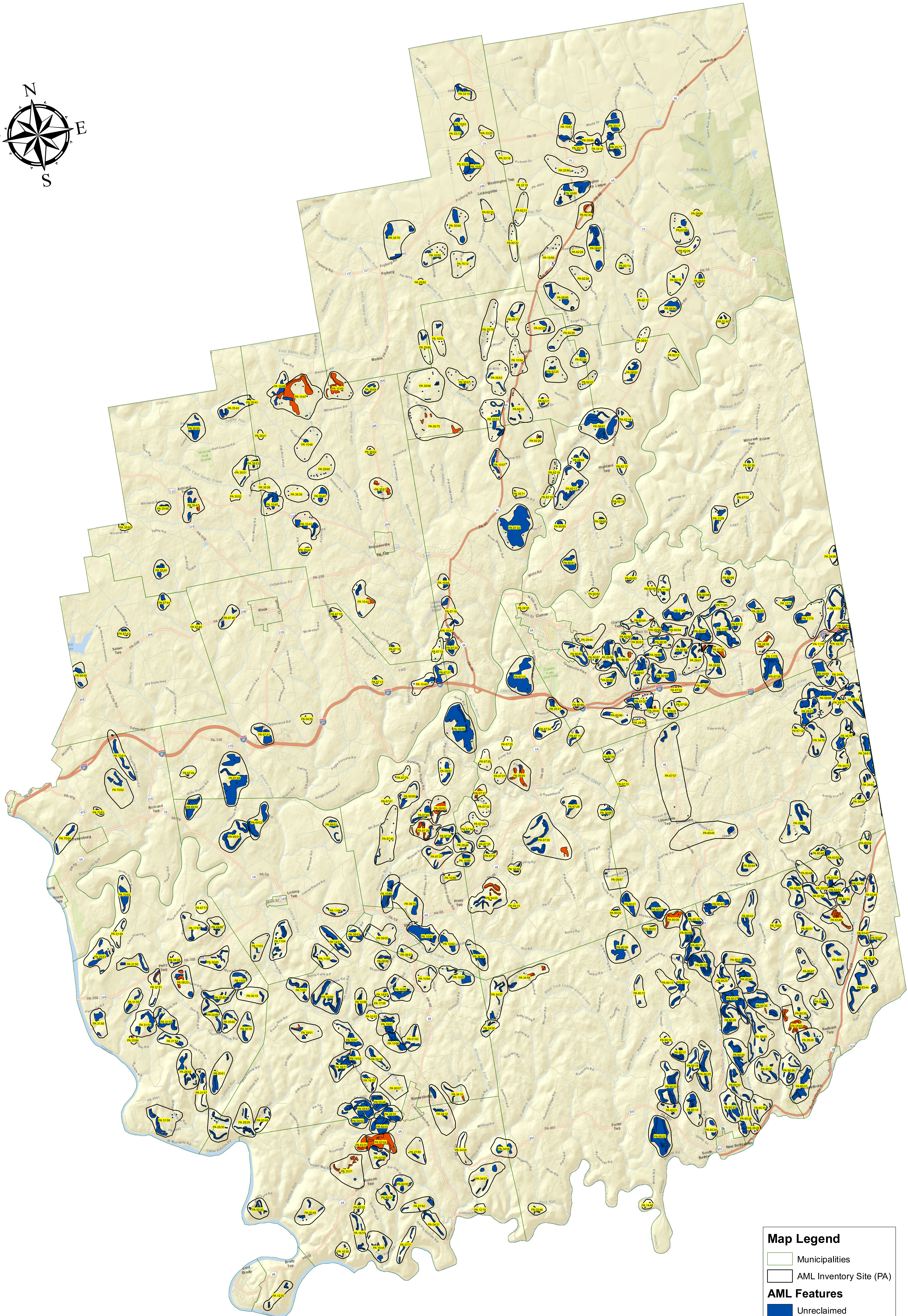
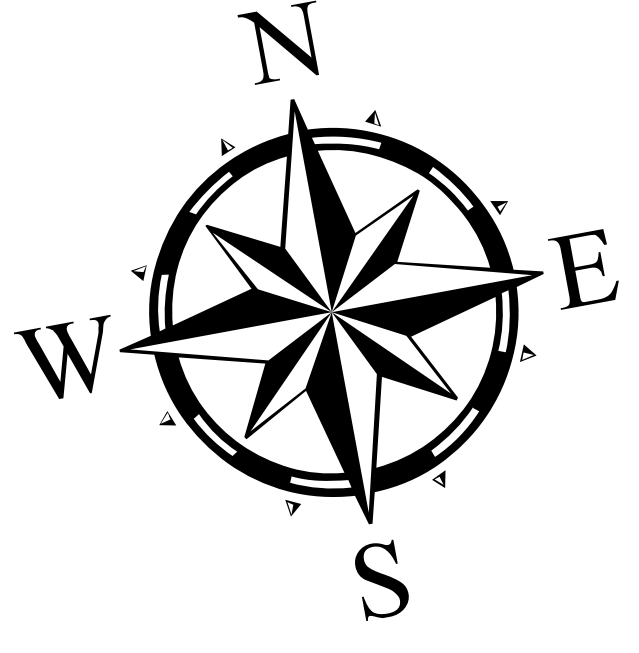


Clarion County Abandoned Mine Land Inventory



Please contact the Cambria District Office at
(814) 472-1800 concerning abandoned mine information

| Map Legend | |
|--------------|-------------------------|
| | Municipalities |
| | AML Inventory Site (PA) |
| AML Features | |
| | Unreclaimed |
| | Reclaimed |