



# pennsylvania

DEPARTMENT OF ENVIRONMENTAL PROTECTION

Office of Active and Abandoned Mine Operations

ST. VLADIMIR VICINITY  
Abandoned Mine Reclamation Project  
Contract No. OSM 40(1630)101.1

Bureau of Abandoned Mine Reclamation  
2 Public Square, 5<sup>th</sup> Floor  
Wilkes-Barre, PA 18701-1915

DEPARTMENT OF ENVIRONMENTAL PROTECTION  
OFFICE OF ACTIVE AND ABANDONED MINE OPERATIONS  
BUREAU OF ABANDONED MINE RECLAMATION

ST. VLADIMIR VICINITY  
ABANDONED MINE RECLAMATION PROJECT  
CONTRACT NO. OSM 40(1630)101.1

FACT SHEET

**Location:** The project is located southwest of the City of Nanticoke, in the Wanamie section of Newport Township, Luzerne County. The site can be accessed from I-81S by taking Exit 159 toward Nuangola. Turn right onto Van Ave., turn left onto Nuangola Road and continue onto Alden Mountain Road. Turn left onto East Kirmar Ave. At stop sign, turn left onto West Kirmar Ave. and travel approximately 0.8 mile to the site access on the left.

**Watershed:** (CWF) Reservoir Creek → South Branch of Newport Creek → Susquehanna River

**Official Start Date:** September 24, 2015

**Contract Completion Date:** August 19, 2016

**Contractor:** Brdaric Excavating, Inc. of Luzerne, PA

**Property Owners:** Earth Conservancy                      Lee's Oil, Inc.  
JFK properties, Inc.

**Project Cost:** \$1,107,338.10 (Final Amount)  
\$987,967.50 (Bid Amount)

**Project Area:** 16 acres

**Purpose:** To eliminate public health and safety hazards associated with various AML problems related to the flooding of commercial and residential properties and the reclamation of a dangerous highwall.

**Description:** The project is situated along portions of Reservoir Creek and the South Branch of Newport Creek. The site was last mined prior to October 4, 1969 by the Wanamie Colliery. Historic mining caused the streams in the area to be moved. Thirty-four homes and businesses are located within 200 feet to 1,000 feet of Reservoir Creek. The largest part of the project involved re-routing a section of Reservoir Creek away from the flood prone structures to its approximate original location. Approximately 1,204 linear feet of tied concrete block mat was installed in the newly constructed portion of stream channel, 475 linear feet of stream bed was sealed with rock and grout to prevent stream loss, a fish pool was

constructed just upstream of the new channel to minimize fish migration downstream to less inhabitable portions of stream channel, and a 20'x5' precast reinforced concrete box culvert was installed. An existing steel pedestrian bridge was also replaced with a prefabricated 6'x40' Glulam pedestrian bridge, which crosses Reservoir Creek as part of the Penobscot Ridge Mountain Bike Trail. A dangerous highwall, approximately 50 linear feet long and 25 feet high, was reclaimed with the excess material from the construction of the new stream channel and grading of clogged stream lands. A rock lined ditch, approximately 1,000 feet in length, was constructed to convey surface water runoff and the project site was then revegetated with a seed mixture of various grasses and legumes along with tree seed.

**Funding:**

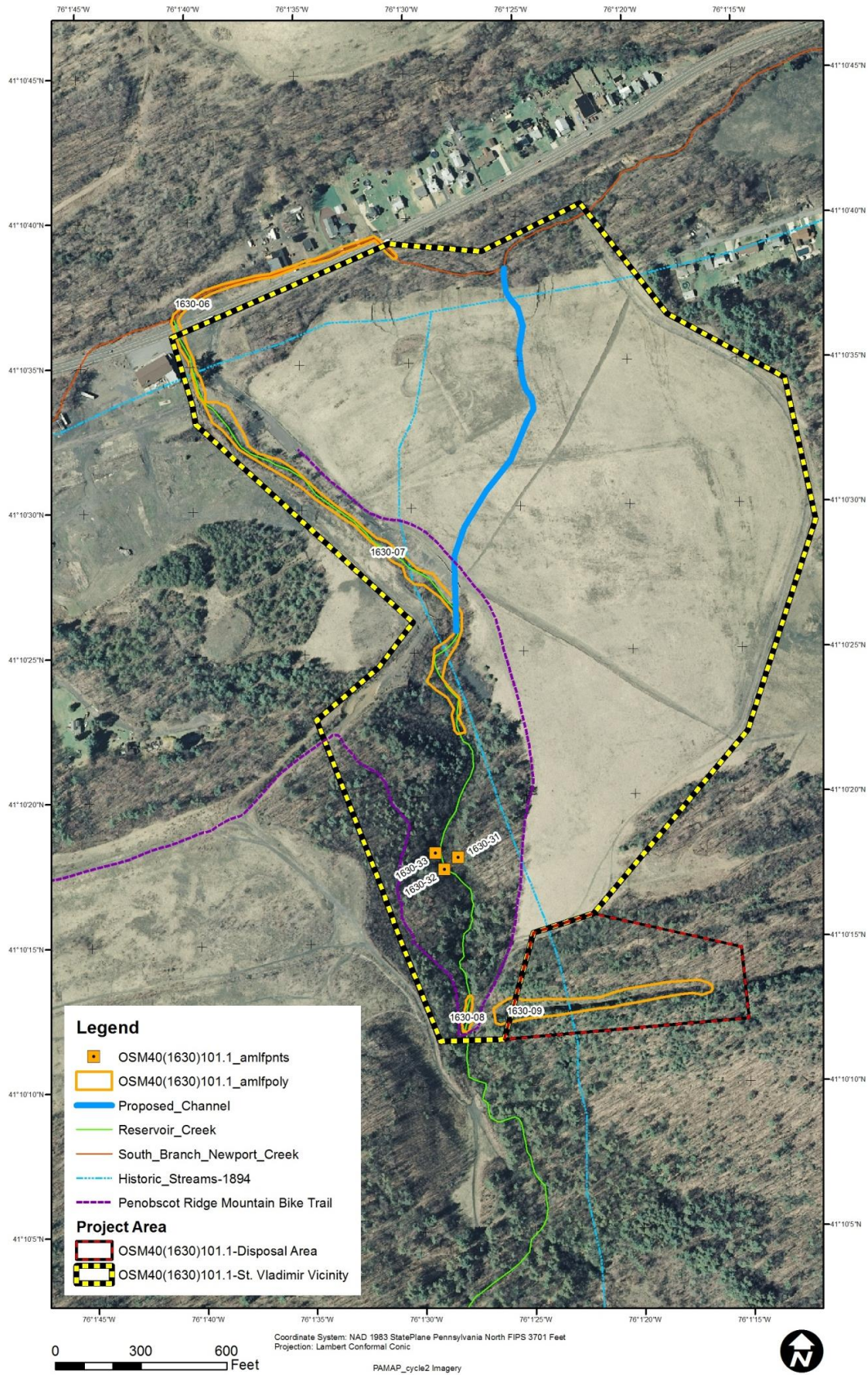
Pennsylvania Abandoned Mine Land Grant

**Project Management:**

Bureau of Abandoned Mine Reclamation  
Wilkes-Barre District Office  
570.826.2371

# ST. VLADIMIR VICINITY CONTRACT NO. OSM 40(1630)101.1

## Location Map





ST. VLADIMIR VICINITY  
CONTRACT NO. OSM 40(1630)101.1  
Pre-Construction



Stream Bank Erosion along Reservoir Creek



Pedestrian Bridge and Stream Bank Erosion along Reservoir Creek



ST. VLADIMIR VICINITY  
CONTRACT NO. OSM 40(1630)101.1  
During Construction



Channel Construction in Grading Area B



Grading Area C - Grading Area D



ST. VLADIMIR VICINITY  
CONTRACT NO. OSM 40(1630)101.1

Post-Construction



Grading Area C - Pedestrian Bridge - Grading Area D



Grouted stream channel - Grading Area E looking towards Grading Area A



ST. VLADIMIR VICINITY  
CONTRACT NO. OSM 40(1630)101.1

Post-Construction



Box Culvert - Grading Area A looking towards Grading Area E



Site Disposal Area – Grading Area C