



**pennsylvania**  
**DEPARTMENT OF ENVIRONMENTAL  
PROTECTION**

Office of Active and Abandoned Mine Operations

**POWDERLY CREEK NORTHEAST UNDERGROUND  
MINE FIRE**

Abandoned Mine Reclamation  
Contract No. OSM 35(1520)102.1

Bureau of Abandoned Mine Reclamation  
2 Public Square, 5<sup>th</sup> Floor  
Wilkes-Barre, PA 18701-1915

**DEPARTMENT OF ENVIRONMENTAL PROTECTION  
ACTIVE AND ABANDONED MINE OPERATIONS  
BUREAU OF ABANDONED MINE RECLAMATION**

**POWDERLY CREEK NORTHEAST UNDERGROUND MINE FIRE  
PROJECT NO. OSM 35(1520)102.1**

**FACT SHEET**

**Location:** The site is located approximately 2,000 feet southeast of downtown Carbondale City, Lackawanna County. The abandoned mine lands are partially within the city limits and are bordered on the northeast and west by residential development. The center of the mine fire is located at North Latitude 41° 33' 29.9", West Longitude 75° 30' 19.2" on the Carbondale, 7.5 minute, U.S.G.S. Topographic Quadrangle Map.

**Watershed:** Lackawanna River, Warm Water Fishes (WWF)

**Official Start Date:** June 18, 2015

**Contract Completion Date:** August 14, 2018

**Contractor:** Earthmovers Unlimited, Inc.  
Kylertown, PA

**Property Owners:** D & L Realty Co.; Silverbrook Anthracite Inc.; Keana Wigfall Special Needs Trust; Michael McConnell

**Project Cost:** \$ 8,366,366.42 (Final Amount), \$8,947,731.84 (Bid Amount)

**Project Area:** 72 acres,

**Purpose:** To eliminate the public health and safety hazards from an abandoned underground mine fire and associated abandoned surface mine lands. A Federal OSM Emergency project isolated the fire by constructing a trench up to 130 feet deep with vertical high-walls and dangerous spoil piles. Smoke and fumes from the underground mine fire contributed to air pollution in the valley.

**Description:** Underground mining was completed in the 1920's; surface mining of the remnant coal was performed through the 1960's, with the approximate present limit of spoil shown on a 1969 aerial photo.

The entire Project Area consists of 72 acres of surface and underground Abandoned Mine Land Features on private property. An underground mine fire was burning beneath approximately 25 acres.

**DEPARTMENT OF ENVIRONMENTAL PROTECTION  
OFFICE OF ACTIVE AND ABANDONED MINE OPERATIONS  
BUREAU OF ABANDONED MINE RECLAMATION**

**POWDERLY CREEK NORTHEAST UNDERGROUND MINE FIRE  
PROJECT NO. OSM 35(1520)102.1**

**FACT SHEET**

The burning underground mine fire was contained by an OSM emergency isolation trench approximately 2,500 linear feet long and up to 130 feet deep. This hazardous open trench and associated dangerous spoil piles encompass an additional 33 acres of un-reclaimed mining features. Historic surface mining of anthracite coal has resulted in an additional 50 acres of un-reclaimed spoil piles and trenches adjacent to the underground mine fire and related containment features.

This project reclaimed 25 acres of underground mine fire by blasting 1.9 million cubic yards of rock, and excavating and quenching 2.5 million cubic yards of material. An additional 47 acres of adjacent surface-mined land was reclaimed by grading and backfilling the excavated mine fire area. The site contributed polluted water to Powderly Creek, the mine pool and ultimately the Lackawanna River. Powderly Creek is classified as a non-attaining CWF, impaired by abandoned mine drainage, metals and siltation.

The Department retained Gannett Fleming, Inc., an experienced consulting engineering firm, to perform the project design via its on-call professional design services agreements.

**Funding:**

The project was funded by the Pennsylvania's Abandoned Mine Land Grant and the 2016 AML Economic Development Pilot Program.

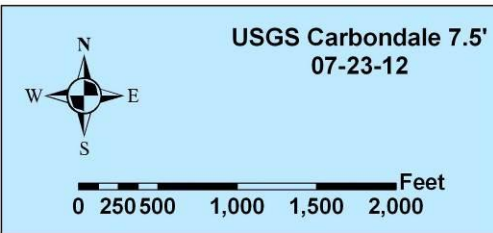
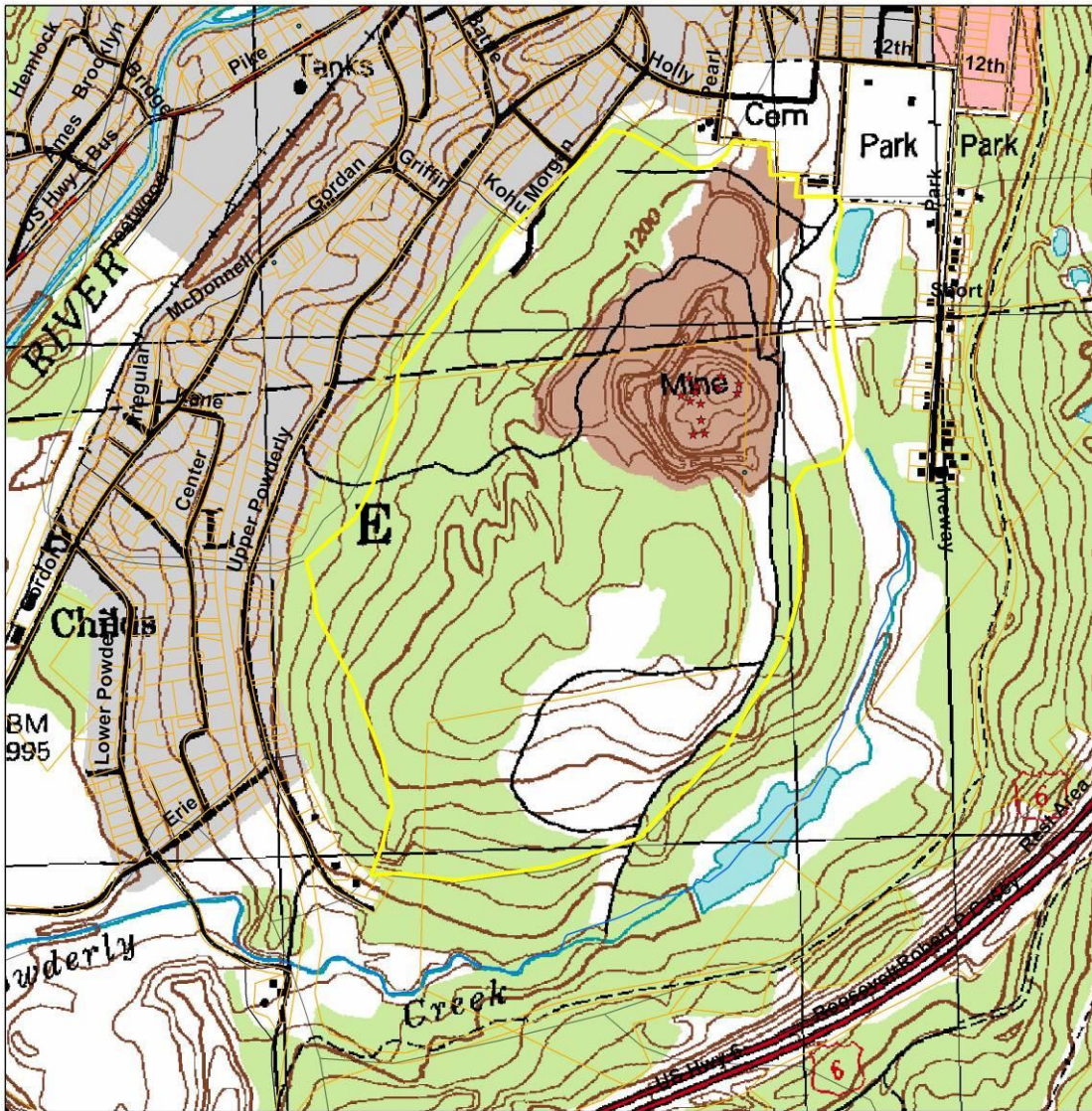
**Project Management:**

Bureau of Abandoned Mine Reclamation  
Wilkes-Barre District Office  
570.826.2371

**POWDERLY CREEK NORTHEAST UNDERGROUND MINE FIRE  
PROJECT NO. OSM 35(1520)102.1**

Location Map

**Powderly Creek Northeast  
OSM 35(1520)102.1**



**POWDERLY CREEK NORTHEAST UNDERGROUND MINE FIRE  
PROJECT NO. OSM 35(1520)102.1**

Pre-Construction



**POWDERLY CREEK NORTHEAST UNDERGROUND MINE FIRE  
PROJECT NO. OSM 35(1520)102.1**

During Construction



**POWDERLY CREEK NORTHEAST UNDERGROUND MINE FIRE  
PROJECT NO. OSM 35(1520)102.1**

During Construction



**POWDERLY CREEK NORTHEAST UNDERGROUND MINE FIRE  
PROJECT NO. OSM 35(1520)102.1**

During Construction





**POWDERLY CREEK NORTHEAST UNDERGROUND MINE FIRE  
PROJECT NO. OSM 35(1520)102.1**

Post Construction



**POWDERLY CREEK NORTHEAST UNDERGROUND MINE FIRE  
PROJECT NO. OSM 35(1520)102.1**

Post Construction

