



# pennsylvania

DEPARTMENT OF ENVIRONMENTAL PROTECTION

Office of Active and Abandoned Mine Operations

TRUITTSBURG SOUTHWEST  
Abandoned Mine Reclamation Project  
Contract No. OSM 16(6030)101.1

Bureau of Abandoned Mine Reclamation  
Rachel Carson State Office Building, 13<sup>th</sup> Floor  
400 Market Street, PO Box 69205  
Harrisburg, PA 17106-9205

DEPARTMENT OF ENVIRONMENTAL PROTECTION  
OFFICE OF ACTIVE AND ABANDONED MINE OPERATIONS  
BUREAU OF ABANDONED MINE RECLAMATION

TRUITTSBURG SOUTHWEST  
ABANDONED MINE RECLAMATION PROJECT  
CONTRACT NO. OSM 16(6030)101.1

FACT SHEET 1 of 2

**Location:** The project site is located approximately 10 miles southeast of the I-80/SR-68 interchange, along and between Hickory Ridge Road, Pumptown Road, and Middle Run Road, approximately 1 mile southwest of the village of Truittsburg in Redbank Township, Clarion County. LAT 41° 03' 21.8"; LONG -79° 17' 55.5"; New Bethlehem, PA Quad.

**Watershed:** Redbank Creek Watershed: Unnamed Tributary, Cold Water Fishes (CWF) to Town Run (CWF)

**Official Start Date:** January 21, 2013

**Contract Completion Date:** July 14, 2014

**Contractor:** Morgan's Excavating, 15408 Hill Valley Rd, Mount Union, PA

**Property Owners:** Martin N. and Alison Mills      Bowersox and Bowersox,  
McGuire,                                      Loyal F. and Doris Best,  
Ronald J. Dean, et al,                      Loyal D. Best.

**Project Cost:** \$997,350.90 (Final Amount), \$996,376.00 (Bid Amount)

**Project Area:** 61.2 acres (59.9 pre-act acres + 1.3 bond forfeiture acres)

**Purpose:** To eliminate eligible abandoned mine public health and safety hazards that are located within close proximity to places of intense visitation by humans.

**Description:** Mining was performed by "Red Reed Mining Company" and ceased in the 1940s. The Lower Kittanning coal seam was mined to a depth of 60 feet. The project graded approximately 857,000 cubic yards of on-site spoil material and eliminated 4,800 linear feet of dangerous highwalls. The highwall's maximum height was about 70 feet and was effectively vertical at that point. The site contributed surface runoff to unnamed tributaries of Town Run. There are five (5) homes within 500 feet of the previously existing abandoned mine hazards; the closest home being 385 feet from the highwall. The site showed evidence of being a popular

**TRUITTSBURG SOUTHWEST  
ABANDONED MINE RECLAMATION PROJECT  
CONTRACT NO. OSM 16(6030)101.1**

**FACT SHEET 2 of 2**

destination to ride ATV's and dirt bikes. Heavily used access roads traversed the site and at some locations came within close proximity to the vertical highwall. These dangerous abandoned mine features were labeled as "Exceptional Worth" and met the Office of Surface Mining's Priority 2 safety criteria. BAMR worked with the DMO to get a \$6,000 bond forfeited and released, which enabled a small adjacent permitted shale pit to be reclaimed by the contractor.

**Funding:**

Pennsylvania's Abandoned Mine Land Grant, Pennsylvania Growing Greener and Bond Forfeiture funds

**Project Management:**

Bureau of Abandoned Mine Reclamation  
Harrisburg Office  
Contact: 717.783.7949, Steve Golembiewski

**Accomplishments:**

PRIORITY	AMLF #	AMLF KEYWORD	MEASUREMENTS						QUANTITY	UNIT
			ACRES	HEIGHT	LENGTH	COUNT	VOL.	FLOW		
2	6030-1	DH	-	.	4,800	-	-	-	4,800	L.F.
3	6030-2	SA	59.9	-	-	-	-	-	59.9-	Acres

DH = Dangerous Highwall  
SA = Spoil Area  
LF= Linear Feet

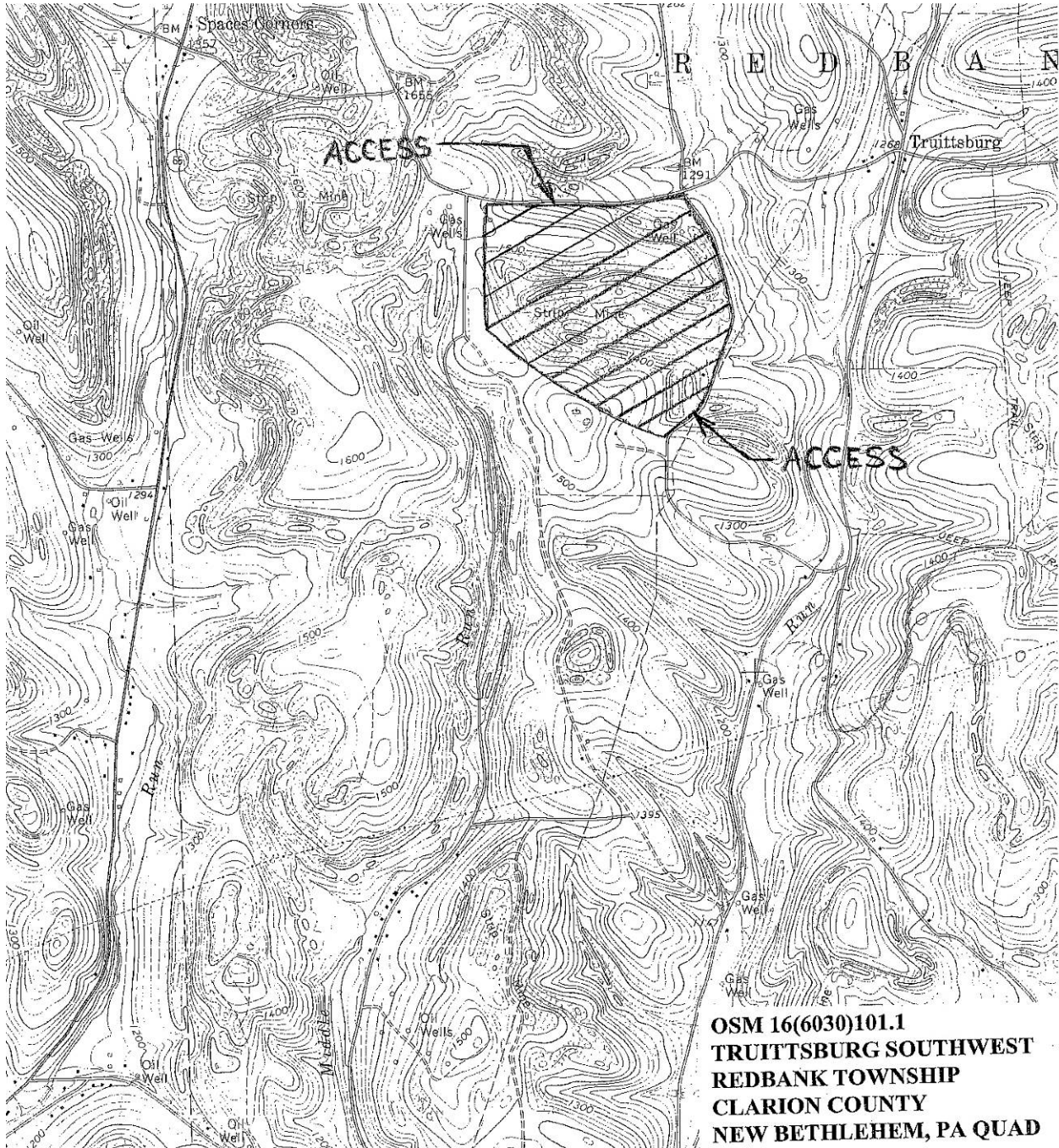
566.1 pounds of tree seed consisting of Silky Dogwood, Arrowwood, Black Cherry, Gray Birch, Sweet Birch, Green Ash and Sugar Maple were planted on the 61.2 acres.

\*A non-coal rock quarry (the Anthony Mine), Permit No. 16050801, was located adjacent to the project and was previously operated by Martin McGuire. The quarry site was abandoned and never reclaimed by McGuire. The Knox District Mining Office (DMO) terminated the permit and the \$6,000 bond was forfeited, collected and transferred from the non-coal fund to the AML program. DEP's contractor reclaimed the 1.3-acre abandoned quarry site at a cost of \$5,900.

**(IMAGES FOLLOW)**

TRUITTSBURG SOUTHWEST  
CONTRACT NO. OSM 16(6030)101.1

Location Map



TRUITTSBURG SOUTHWEST  
Contract No. OSM 16(6030)101.1

Aerial Photo of Approximate Grading Boundary



TRUITTSBURG SOUTHWEST  
CONTRACT NO. OSM 16(6030)101.1  
Pre-Construction



TRUITTSBURG SOUTHWEST  
CONTRACT NO. OSM 16(6030)101.1

During Construction



TRUITTSBURG SOUTHWEST  
CONTRACT NO. OSM 16(6030)101.1

Post-Construction

