

U.S. EPA's State Climate and Energy Technical Forum &
Local Climate and Energy Webcast Series present,

**Climate Change Adaptation for State and Local Governments
Part One: Climate Impacts and Risk Communication**

We will start in a few minutes. Thank you for joining us.



**State and Local
Climate and Energy Program**





**State and Local
Climate and Energy Program**

Climate Change Adaptation for State and Local Governments Part One: Climate Impacts and Risk Communication

U.S. EPA State and Local Climate and Energy Program

November 18, 2010

Webcast Agenda



- Logistics & Overview of U.S. EPA State & Local Climate & Energy Program
Emma Zinsmeister, U.S. EPA
- An Introduction to Climate Change Adaptation
Joel Scheraga, U.S. EPA
- Risk Communication: A Vital Tool for Building Public Support for Climate Change Adaptation
David Ropeik, Ropeik & Associates
- Adapting to Climate Change in Chula Vista, CA
Brendan Reed, Chula Vista, CA
- Question & Answer Session

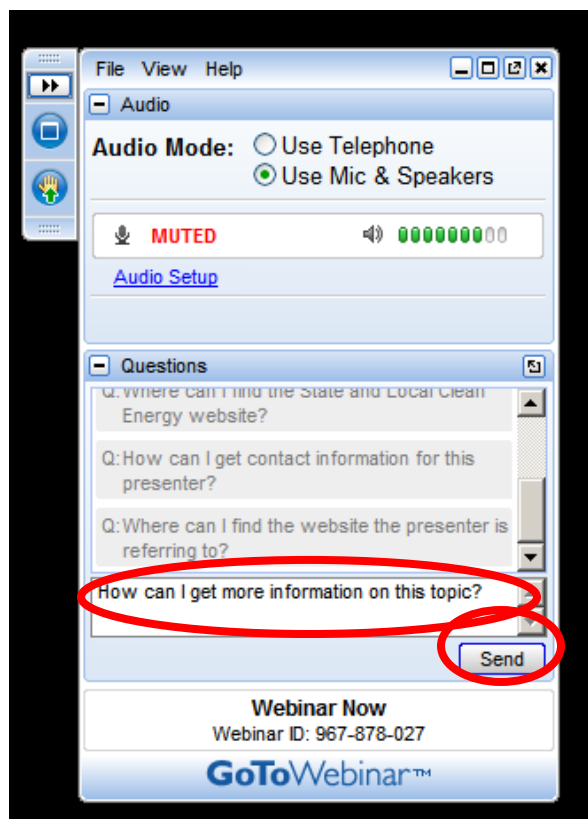
GoTo Webinar Software Logistics



- You will be muted throughout this webcast to minimize background noise. You'll be able to submit questions and comments in writing.
- PDF and audio files of today's session will be made available for download in a few weeks at:
 - <http://www.epa.gov/statelocalclimate/web-podcasts/index.html>
- Throughout the webcast, if you have problems, please contact Lauren Pederson at:
 - lpederson@icfi.com

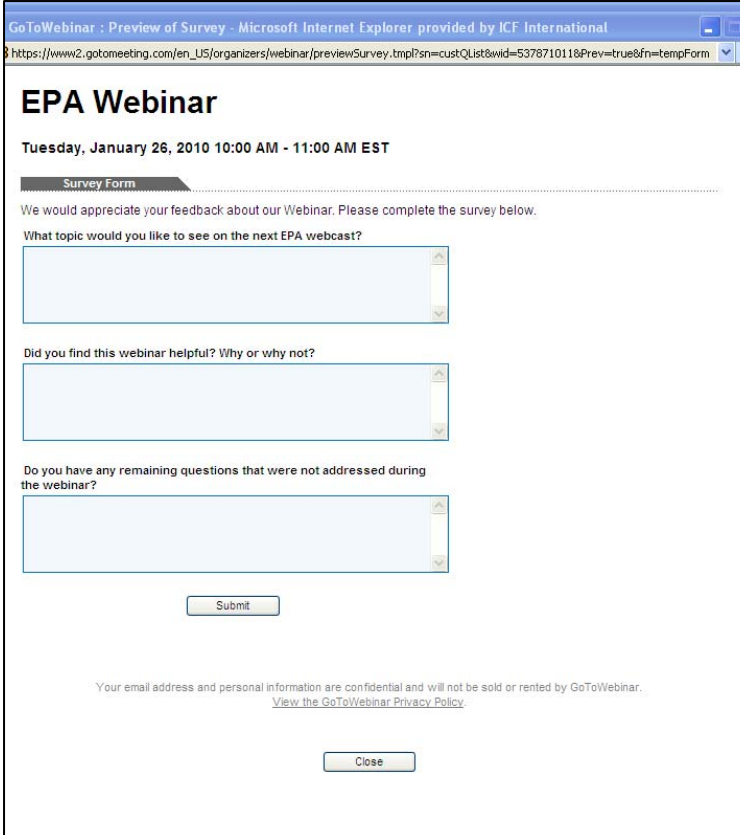
Questions (GoTo Meeting)

- If you have a question, submit through the question pane.
- We will compile these questions and ask them during the Q&A session.
- Please include the name of the presenter you would like to answer your question.



Optional Feedback (GoTo Meeting)

- A pop-up window will appear once you exit GoTo Meeting.
- Please take a few minutes to respond to the optional questions and provide your feedback.



GoToWebinar : Preview of Survey - Microsoft Internet Explorer provided by ICF International
https://www2.gotomeeting.com/en_US/organizers/webinar/previewSurvey.html?sn=custQList&wid=537871011&Prev=true&Fn=tempForm

EPA Webinar

Tuesday, January 26, 2010 10:00 AM - 11:00 AM EST

Survey Form

We would appreciate your feedback about our Webinar. Please complete the survey below.

What topic would you like to see on the next EPA webcast?

Did you find this webinar helpful? Why or why not?

Do you have any remaining questions that were not addressed during the webinar?

Submit

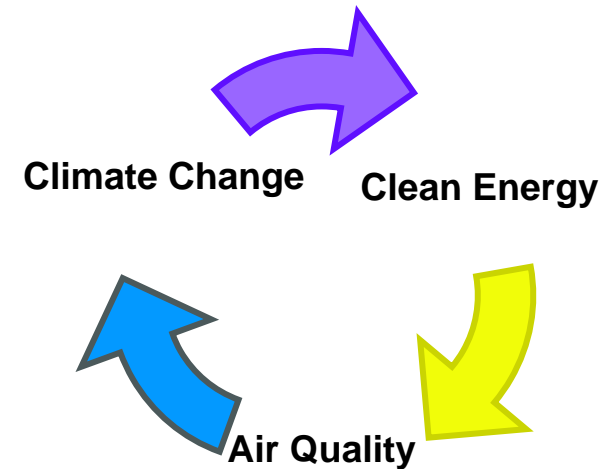
Your email address and personal information are confidential and will not be sold or rented by GoToWebinar.
[View the GoToWebinar Privacy Policy.](#)

Close

U.S. EPA State and Local Climate and Energy Program: Who We Are



- Helps states, localities and tribal governments identify, analyze, implement and track the success of policies and programs that achieve *multiple benefits*:
 - reduce greenhouse gas emissions,
 - lower energy costs,
 - improve air quality, public health, and quality of life,
 - increase energy security and reliability and
 - achieve economic development goals.



Clean Energy: Energy Efficiency, Renewable Energy, Combined Heat and Power

U.S. EPA State and Local Climate and Energy Program: What We Offer



Comprehensive website provides State and Local governments with:

- Background on climate change topics, **including adaptation**
- Information to **develop and implement climate mitigation policies and programs**
- Links to a wide array of **technical assistance resources** and **peer exchange opportunities**, such as tools, guidance documents, webcasts, and podcasts
- **Examples and case studies**
- Developing a tribal element for the program

EPA United States Environmental Protection Agency

LEARN THE ISSUES | SCIENCE & TECHNOLOGY | LAWS & REGULATIONS | ABOUT EPA

State and Local Climate and Energy Program

Contact Us Share

What's New

- November 8 - Updated Climate Showcase Communities Grants Page
- November 2 - Registration open for webcast on Climate Change Adaptation for State and Local Governments
- August 5 - Local Webcast: Corporate, Institutional & Government Opportunities in Community Wind Development
- July 21 - Local Webcast: Transportation Control Measures - Strategies for Reducing Vehicle Miles Traveled and Greenhouse Gas Emissions
- July 8 - Tribal Climate and Energy Information
- June 18 - Local Webcast: Implementing Green Roof Programs at the Local Level

Quick Finder

State	Local
<ul style="list-style-type: none">• Getting Started• Technical Forum• Partner Network• Bioenergy Primer• Clean Energy Jobs	<ul style="list-style-type: none">• Getting Started• Webcasts• Resources• Clean Energy Jobs• Climate Showcase Communities Grants
<ul style="list-style-type: none">• GHG Inventories• GHG Reporting• Lead by Example Guide• State & Regional Climate Policy Tracking Resources	<ul style="list-style-type: none">• GHG Inventories• Local Strategy Guides• Energy Efficiency in Municipal Operations• Community Types

EPA's State and Local Climate and Energy Program provides technical assistance, analytical tools, and outreach support to state, local, and tribal governments. Specific assistance includes:

- Identifying and documenting cost-effective policies and initiatives that address climate change, including those that promote renewable energy, energy efficiency, and related clean technologies.
- Measuring and evaluating the environmental, economic, and public health benefits of climate change and clean energy initiatives.
- Offering tools, guidance, and outreach support for assessing the options and benefits of actions to reduce greenhouse gas emissions.
- Fostering peer exchange opportunities for state and local officials to share information on best practices and lessons learned about innovative policies and programs.

State Climate and Energy Program

Local Climate and Energy Program

Tribal Climate and Energy Information

Climate Showcase Communities Grants

State Examples

Case studies, GHG inventories, Climate action plans

State Podcast

- Part one of a three-part webcast series on climate change adaptation has been scheduled for November 18. Recordings of past webcasts are available.

Local Podcast

- Part one of a three-part webcast series on climate change adaptation has been scheduled for November 18.

<http://www.epa.gov/statelocalclimate/index.html>

State Climate and Energy Partner Network



- Helps state energy, environmental and utility commission staff understand and explore climate change and clean energy policy and program options.
- In the partner network, you can:
 - Receive EPA's weekly summary of state climate and energy policy news.
 - Participate in the network listserv — pose questions to colleagues and share information about initiatives and activities your state has undertaken.
 - Provide recommendations for topics and speakers for EPA's monthly State Climate and Energy Technical Forum Webcasts.
- To join the Network, please register at:

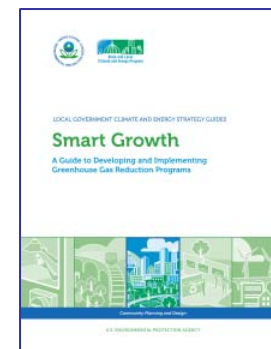


<http://www.epa.gov/statelocalclimate/state/partner/index.html>

Local Climate and Energy Program



- Helps local governments (e.g. regional, county, city, town, etc.) meet multiple sustainability goals with cost-effective climate change mitigation and clean energy strategies.
- Provides peer exchange training opportunities along with policy, technical, and analytical information for planning, implementing and evaluating programs/projects.
 - Local Government Climate & Energy Strategy Guides
 - Local Climate and Energy Webcasts
 - Climate Showcase Communities & other case studies



<http://www.epa.gov/statelocalclimate/local/index.html>

U.S. EPA

Heat Island Reduction Program



- Heat islands describe the occurrence of measurably higher temperatures in densely built urban centers compared to surrounding suburban or rural areas.
- Mitigating the heat island effect can help adapt to future weather, climate, and health variations:
 - Precipitation (increased intensity and frequency)
 - Temperatures (higher)
 - Heat waves (increased frequency and length)
 - Heat-related illness (may increase due to higher temperatures and more frequent heat waves)
- Actions to address the heat island effect include increasing:
 - Vegetative cover (trees, vegetation, and green roofs)
 - Cool and reflective hard surfaces (roofs and pavements)
- Resources and more information about EPA's Heat Island Program are available at: <http://www.epa.gov/heatislands/>

Climate Change Impacts and Adaptation Resources



U.S. EPA State and Local Climate and Energy Program Website

- State Page: <http://www.epa.gov/statelocalclimate/state/topics/impacts-adaption.html>
- Local Page: <http://www.epa.gov/statelocalclimate/local/topics/impacts-adaptation.html>

Webcast Mini-Series: Climate Change Adaptation for State and Local Governments

Jointly hosted by EPA's State Climate and Energy Technical Forum and Local Climate and Energy Webcast Series

- **Part One: Climate Impacts & Risk Communication - TODAY!**
- **Part Two: Adaptation Planning and Implementation**
 - December 15, 2010 from 2:00-3:30 PM EST
 - Register at: <https://www2.gotomeeting.com/register/114040154>
- **Part Three: Federal Resources & Support for Climate Change Adaptation**
 - January 13, 2011 from 2:00-3:30 PM EST
 - Register at: <https://www2.gotomeeting.com/register/371104282>

Additional Climate Change Impacts and Adaptation Resources



U.S. EPA Report: Climate Change Indicators in the United States

<http://www.epa.gov/climatechange/indicators.html>

U.S. Global Change Research Program

- Brochures & regional fact sheets on climate impacts:
<http://www.globalchange.gov/publications/reports/scientific-assessments/us-impacts/usimpacts-brochures>

Pew Center on Global Climate Change

- Impacts analysis, legislative tracking, example adaptation plans:
<http://www.pewclimate.org/hottopics/adaptation>

Georgetown Climate Center

- Best practices, legal analysis, legislative tracking, example adaptation plans:
<http://www.georgetownclimate.org/adaptation/index.php>

ICLEI-Local Governments for Sustainability

- Guidebook, case studies, fact sheets, & links to other resources:
http://www.icleiusa.org/programs/climate/Climate_Adaptation/free-climate-adaptation-resources

More federal resources to be highlighted during our January 13, 2011 webcast!

Contact Information



- Julia Miller (State Program)
 - miller.julia@epa.gov
 - (202) 343-9341
- Emma Zinsmeister (Local Program)
 - zinsmeister.emma@epa.gov
 - (202) 343-9043
- Neelam Patel (Heat Island Reduction Program)
 - patel.neelam-r@epa.gov
 - (202) 343-9384
- To receive updates on climate and clean energy policy developments, studies, reports, events, and funding opportunities, please sign up for our **State and Local Climate and Energy Listserv**:
<http://www.epa.gov/statelocalclimate/listservs/index.html#a01>