

# Climate Change Adaptation & Conservation - A New Paradigm

Greg Czarnecki

Office of Conservation Science

PA Dept. of Conservation and Natural Resources

# Climate Change Adaptation

Helping human  
and natural  
systems cope  
with:

- the direct effects  
of climate change
- human  
responses to  
climate change



Mendenhall Glacier, Alaska



Waymart Wind Farm

# Has Climate Change Begun?

- The first 8 years of this century are among the top 10 warmest on record.
- Sea surface temperatures this year are the highest ever recorded.
- The past three years have had the smallest amount of arctic sea ice ever recorded.
- Sea level is rising 80% faster than predicted due to climate change.



# Maybe It's Natural?

- We're in a period of **decreased** solar output
- CO<sub>2</sub> hasn't been this high in 800,000 years
- CO<sub>2</sub> is rising 10x faster than it has in at least 22,000 years
- CO<sub>2</sub> fingerprints show the CO<sub>2</sub> is from us



Hubbard Glacier, Alaska

# How Will Species Respond?

"I don't mind"



Climigration



Extinction

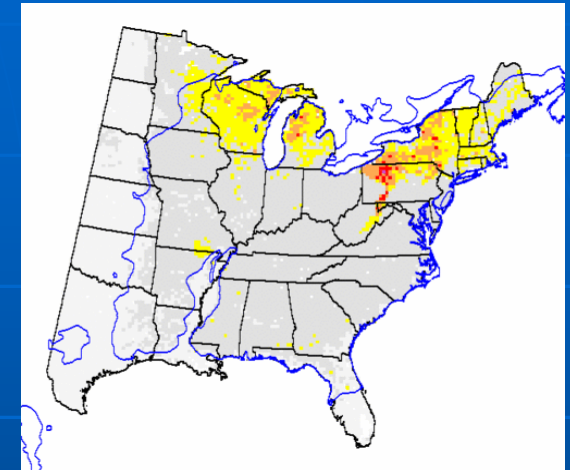


# Are Species Being Affected Yet?

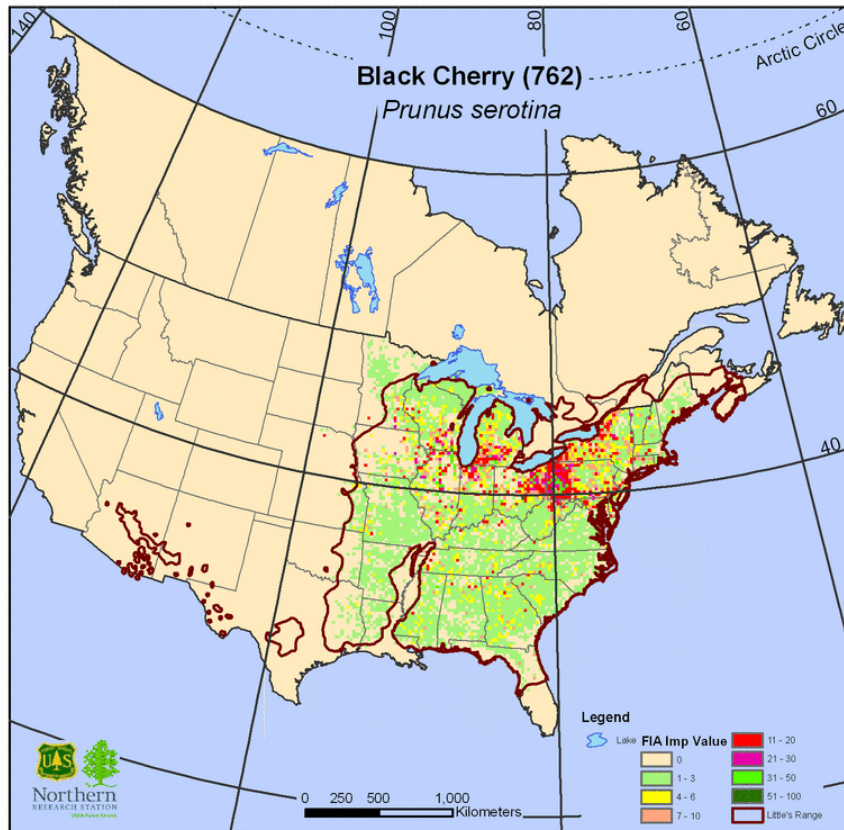
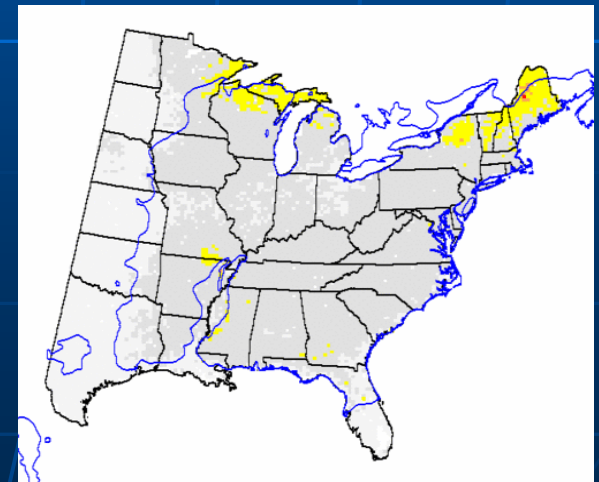


# Black Cherry

Doubling of CO<sub>2</sub>



Tripling of CO<sub>2</sub>



Current distribution

(Source: USFS)

# Invasive Species



UGA1624015

Kudzu

Woolly Adelgid



UGA3225077



# Conservation . . .

. . . used to be  
focused on  
preservation and  
restoration

. . . must now be  
based on future  
conditions



# Determine which species will be most affected

## Climate Change Vulnerability Index

- Factors considered:
  - Dispersal ability
  - Genetic variation
  - Documented response to climate change
  - Habitat vulnerability & specificity
  - Others



# Shift Emphasis to Monitoring

- Knowing where things are now or where they once were is no longer as important as evaluating how they're responding to climate change
- Major federal focus and likely to be well funded in the future

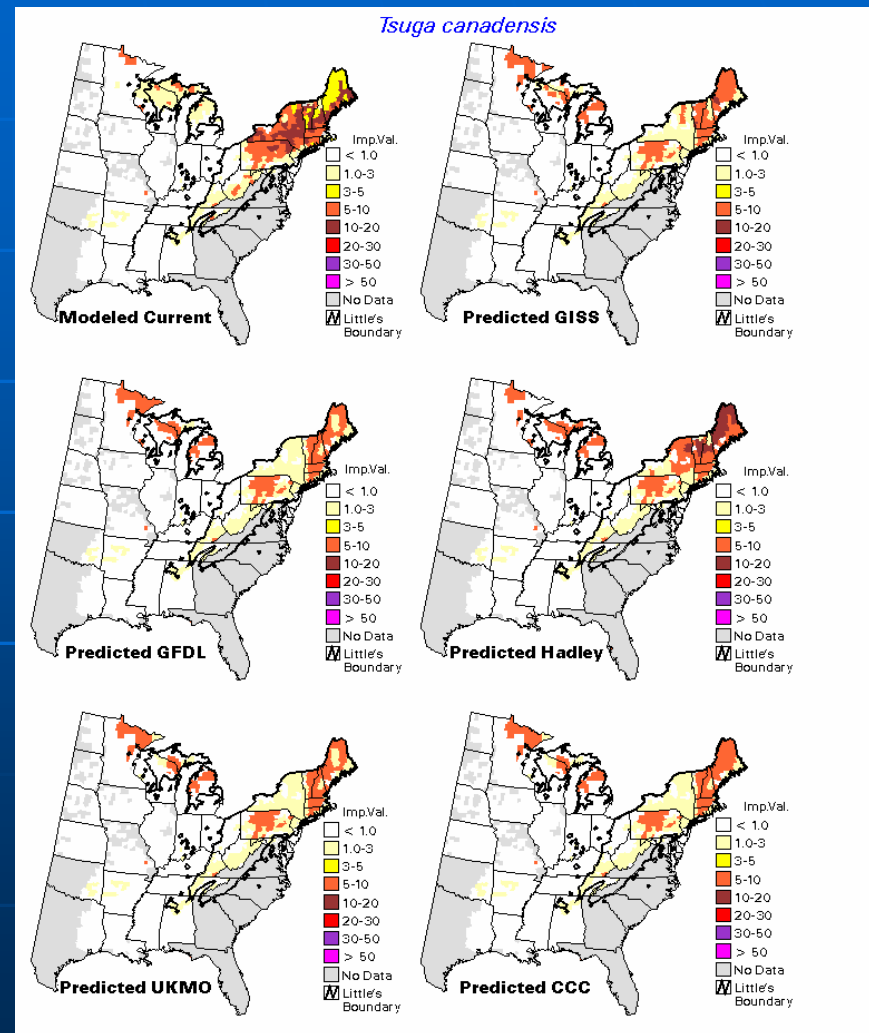


# Predict Distribution Changes

- Maps predict where favorable conditions will exist for a species

- Species move - habitats & communities don't

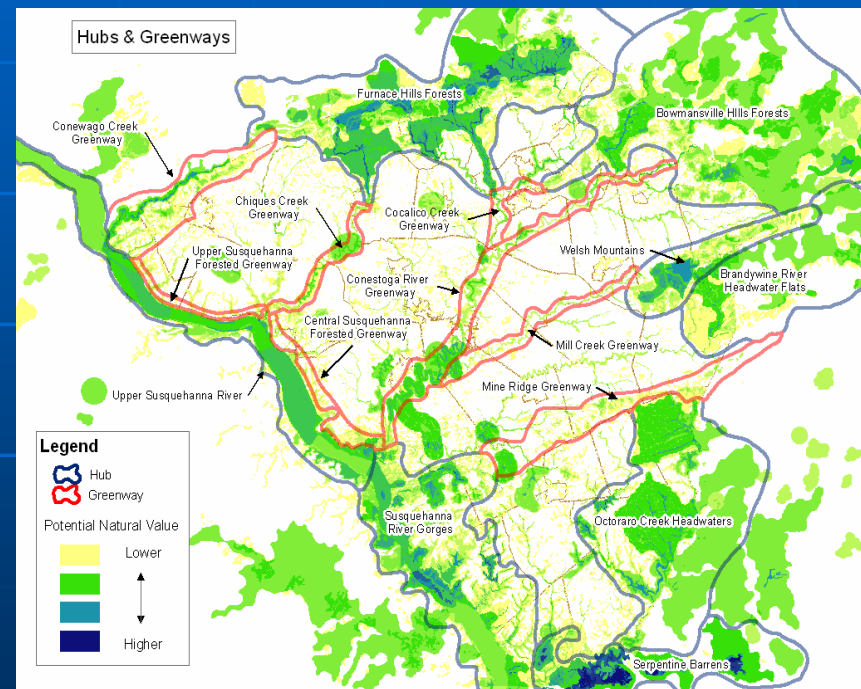
- No guarantee that a species will move



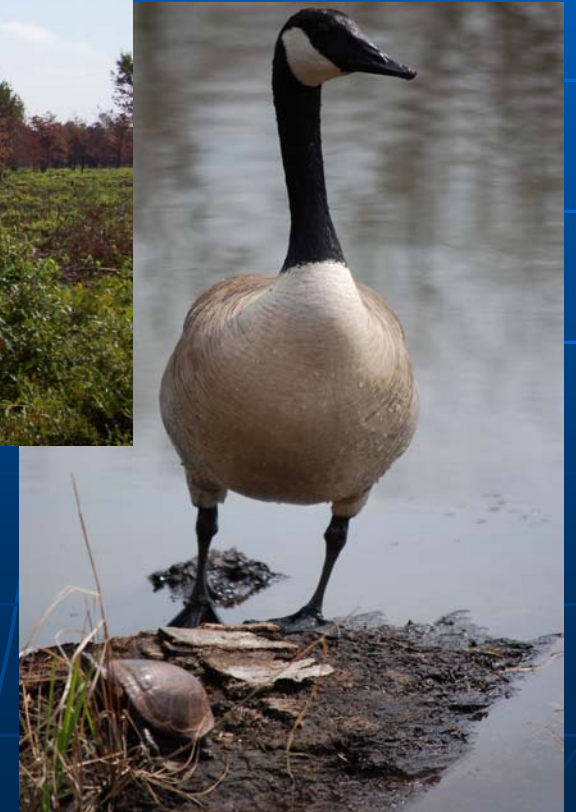
Prasad, A. M. and L. R. Iverson. 1999-ongoing. A Climate Change Atlas for 80 Forest Tree Species of the Eastern United States [database]. <http://www.fs.fed.us/ne/delaware/atlas/index.html>, Northeastern Research Station, USDA Forest Service, Delaware, Ohio.

# Identify Priority Conservation Areas

- Refuges & corridors
- Public lands will be a critical component
- Can help to prioritize grants for acquisition, easements, etc.



# Preserve Ecosystem Function



# Maintain Ecosystem Resilience



# Work Across Borders

- Geographic
- Organizational
- Internal





# The New Approach to Conserving PA's Biodiversity

- Identify those species most at risk
- Shift emphasis from inventory to monitoring
- Model distribution changes
- Identify priority conservation area
- Manage for ecosystem function & resilience
- Work across borders

A photograph of a sunset over a beach. The sun is low on the horizon, casting a warm orange glow across the sky. The sky is filled with scattered, light-colored clouds. The beach is dark, and the ocean waves are visible in the foreground. The word "Questions?" is written in a bright yellow, sans-serif font in the upper center of the image.

Questions?