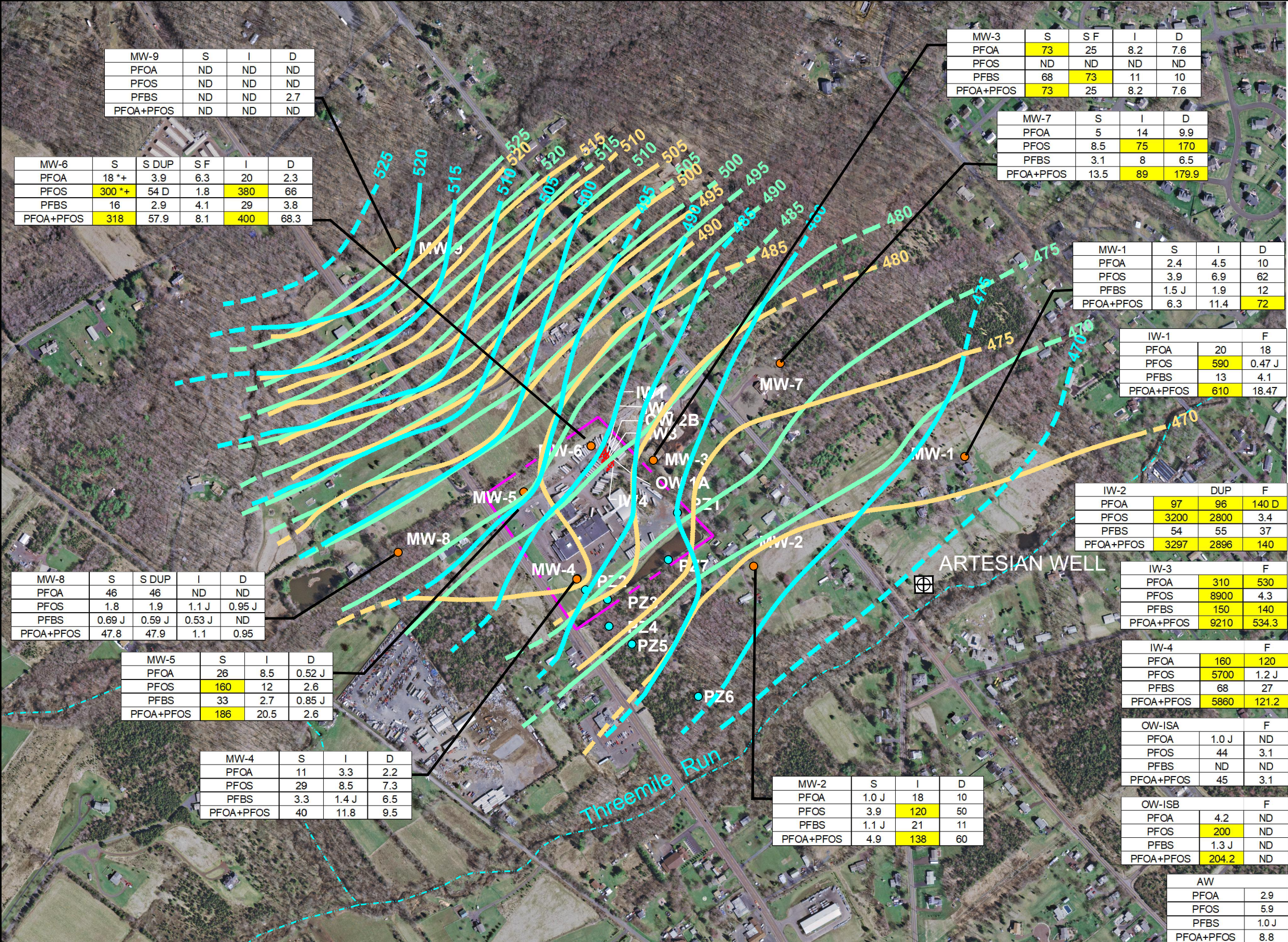


P:\PADEP GTAC 4\CAD-GIS\Ridge Run\DWG\November 2021\10355436015-2070_NOVEMBER-COMBINED 2021.dwg



MW-9	S	I	D
PFOA	ND	ND	ND
PFOS	ND	ND	ND
PFBS	ND	ND	2.7
PFOA+PFOS	ND	ND	ND

MW-6	S	S DUP	S F	I	D
PFOA	18 *+	3.9	6.3	20	2.3
PFOS	300 **	54 D	1.8	380	66
PFBS	16	2.9	4.1	29	3.8
PFOA+PFOS	318	57.9	8.1	400	68.3

MW-3	S	S F	I	D
PFOA	73	25	8.2	7.6
PFOS	ND	ND	ND	ND
PFBS	68	73	11	10
PFOA+PFOS	73	25	8.2	7.6

MW-7	S	I	D
PFOA	5	14	9.9
PFOS	8.5	75	170
PFBS	3.1	8	6.5
PFOA+PFOS	13.5	89	179.9

MW-1	S	I	D
PFOA	2.4	4.5	10
PFOS	3.9	6.9	62
PFBS	1.5 J	1.9	12
PFOA+PFOS	6.3	11.4	72

IW-1	F	
PFOA	20	18
PFOS	590	0.47 J
PFBS	13	4.1
PFOA+PFOS	610	18.47

IW-2	DUP	F	
PFOA	97	96	140 D
PFOS	3200	2800	3.4
PFBS	54	55	37
PFOA+PFOS	3297	2896	140

IW-3	F	
PFOA	310	530
PFOS	8900	4.3
PFBS	150	140
PFOA+PFOS	9210	534.3

IW-4	F	
PFOA	160	120
PFOS	5700	1.2 J
PFBS	68	27
PFOA+PFOS	5860	121.2

OW-ISA	F	
PFOA	1.0 J	ND
PFOS	44	3.1
PFBS	ND	ND
PFOA+PFOS	45	3.1

OW-ISB	F	
PFOA	4.2	ND
PFOS	200	ND
PFBS	1.3 J	ND
PFOA+PFOS	204.2	ND

AW	
PFOA	2.9
PFOS	5.9
PFBS	1.0 J
PFOA+PFOS	8.8

MW-8	S	S DUP	I	D
PFOA	46	46	ND	ND
PFOS	1.8	1.9	1.1 J	0.95 J
PFBS	0.69 J	0.59 J	0.53 J	ND
PFOA+PFOS	47.8	47.9	1.1	0.95

MW-5	S	I	D
PFOA	26	8.5	0.52 J
PFOS	160	12	2.6
PFBS	33	2.7	0.85 J
PFOA+PFOS	186	20.5	2.6

MW-4	S	I	D
PFOA	11	3.3	2.2
PFOS	29	8.5	7.3
PFBS	3.3	1.4 J	6.5
PFOA+PFOS	40	11.8	9.5

MW-2	S	I	D
PFOA	1.0 J	18	10
PFOS	3.9	120	50
PFBS	1.1 J	21	11
PFOA+PFOS	4.9	138	60

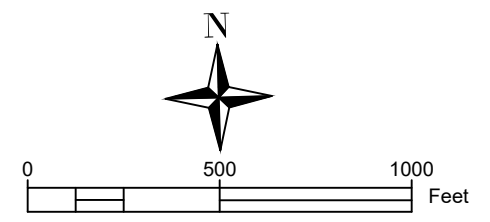
- MONITORING WELL (MW)
- PIEZOMETER (PZ)
- ⚡ INJECTION WELL (IW)
- OBSERVATION WELL (OW)
- ⊕ ARTESIAN WELL

GROUNDWATER ELEVATION CONTOURS IN FEET ABOVE MEAN SEA LEVEL (AMSL)
— SHALLOW SCREEN INTERVAL
— INTERMEDIATE SCREEN INTERVAL
— DEEP SCREEN INTERVAL
 (CONTOURS DASHED WHERE INFERRED)

RESULTS IN NANOGRAMS PER LITER (ng/L)
HIGHLIGHTED RESULTS ARE ABOVE PADEP MEDIUM SPECIFIC CONCENTRATIONS (MSCs), RESIDENTIAL AQUIFER PFOA=70 ng/L, PFOS=70 ng/L, PFBS=1000ng/L

B - ANALYTE WAS FOUND IN BLANK
 J - ESTIMATED VALUE
 ND - NOT DETECTED
 *3 = ISTD RESPONSE OR RETENTION TIME OUTSIDE ACCEPTABLE LIMITS
 *5 = ISOTOPE DILUTION IS OUTSIDE ACCEPTANCE LIMITS, LOW BIASED
 S - SHALLOW ZONE
 I - INTERMEDIATE ZONE
 D - DEEP ZONE

MAP SOURCES: DVRPC, Bucks County North



IRRSC7
 Ridge Run PFAS HSCA Site
 East Rockhill Twp., West Rockhill Twp.,
 and Perkasio Brough
 Bucks County, PA

Monitoring Well Sample Results
 November 2021

10355436015-2070_NOVEMBER-COMBINED 2021.dwg	SCALE AS NOTED
FIGURE NUMBER FIGURE 1	REV A DATE 2/23/22