

Yard Waste Management Options

East Lampeter Township
2250 Old Philadelphia Pike
Lancaster, PA 17602
(717) 393-1567



SCS ENGINEERS

02217011.02 – Task 49 | June 24, 2021

11260 Roger Bacon Drive
Reston, VA 20190
703-471-6150

Table of Contents

Section	Page
1 Project Description	1
2 Summary of Work	1
3 Current Program	2
4 Findings.....	3
Act 101 Requirements.....	3
Options.....	4
Require Monthly Curbside Collection by Licensed Haulers	4
Partner with Neighboring Community for Drop-Off Facility	5
Partner with Private Facility	8
Establish Drop-Off Location	10
5 Prioritization of Options	14
6 Conclusion	15

Tables

Table 1. Yard Waste Management Facilities	12
---	----

Appendices

Appendix A – Municipal Recycling Requirements from Act 101

1 PROJECT DESCRIPTION

East Lampeter Township (Township) is a Pennsylvania Municipal Waste Planning, Recycling and Waste Reduction Act (Act 101) mandated recycling community. For many years residents of East Lampeter Township were allowed to drop-off yard waste materials at neighboring Manheim Township's Compost Park. The quantity of materials, particularly grass clippings, managed at the Compost Park has been increasing over the last several years and has caused some operational challenges. More recently, Manheim Township has had to limit the amount of grass clippings the Compost Park accepts as the excess materials cannot be incorporated into the composting operations. By restricting access to Township residents only, Manheim Township hopes the Compost Park will be able to accept grass clippings from residents throughout the entire growing season. However, with this new restriction East Lampeter Township residents no longer have the option of delivering yard waste material to the Compost Park. This Recycling Technical Assistance project explored the options and opportunities for East Lampeter residents to continue to divert yard waste from disposal through mulching and composting facilities. The following yard waste management options were considered for this project:

1. **Curbside Collection** – Establish a requirement that all residential properties receive curbside collection of yard waste no less than once per month.
2. **Partnerships with Other Communities** - Explore opportunities to partner with neighboring communities to share yard waste management services/sites, including:
 - a. Manheim Township;
 - b. West Earl Township;
 - c. Lancaster County Solid Waste Management Authority.
3. **Partnerships with Private Entities** – Explore opportunities with private entities for the use of privately owned and operated composting and mulching facilities.

2 SUMMARY OF WORK

This section summarizes the tasks completed for this project.

Task 1 – Project Kick-Off and Data Request

SCS hosted a virtual meeting with Township staff to discuss the project and review the scope of work. The meeting included preliminary discussion on data availability and known options for yard waste management in Lancaster County and East Lampeter Township. Following the meeting, SCS prepared a data request and sent it to Township staff to collect available information.

Task 2 – Identify Management Options

SCS identified and researched yard waste management options for Township residents. Activities included discussions with East Lampeter Township staff and internet research to explore public and private facilities that accept yard waste for composting and mulching. The list of potential yard waste management opportunities for East Lampeter Township residents was reviewed with Township staff for further refinement.

Task 3 – Research Management Options and Prioritize Feasibility

Activities under this task included internet research and phone interviews with staff at each facility identified. Based on the information collected, SCS staff evaluated each yard waste management option for compliance with Act 101 and service and convenience to residents. Based on this research, SCS provided guidance on prioritizing options for managing yard waste in East Lampeter

Township. In prioritizing options, SCS focused on three main criteria: compliance with Act 101, resident convenience and, to a limited extent, cost.

Task 4 – Final Report

This report includes the research, findings, and results of this study.

3 CURRENT PROGRAM

The Township adopted recycling ordinance number 258 which became effective January 1, 2006 that requires all households and commercial properties to recycle. This ordinance was amended (ordinance number 339) in 2018 to update the list of designated recyclable materials by resolution per the request of the Lancaster County Solid Waste Management Authority. The Township's recycling ordinance and 2018 resolution requires the following:

- **Source Separation of Recyclable Materials** – Designated recyclable materials must be separated from solid waste at each property in the Township.
- **Arrangement for Material Collection and Disposal** – Residents and property owners must provide for the collection and proper disposal or recycling of municipal waste and recyclable materials by transporting materials to a designated facility or arranging for onsite (curbside) collection.
- **Inform Residents and Business Owners of Collection Services** – Permitted collectors must provide written notice to each of their customers of their requirement to separately collect recyclable materials from solid waste.
- **Recycling of the Following Materials:**
 - **Residential** – Clear, green, and brown glass bottles and jars; aluminum, steel, and other metal food and beverage cans; plastic bottles, jars and jugs; corrugated cardboard; yard waste; tires; and white goods.
 - **Multi-Family** – Clear, green, and brown glass bottles and jars; aluminum, steel, and other metal food and beverage cans; plastic bottles, jars and jugs; corrugated cardboard; yard waste; tires; and white goods.
 - **Non-Residential** - Clear, green, and brown glass bottles and jars; aluminum, steel, and other metal food and beverage cans; plastic bottles, jars and jugs; corrugated cardboard; high-grade office paper; yard waste; tires; and white goods.
- **Material Collection Only by a Permitted Collector** – Only Township permitted collectors may collect solid waste or recyclable materials from any property.
- **Separate Collection of Municipal Waste and Recyclable Materials** – Permitted collectors that service a residential property for trash collection must also separately collect recyclable materials from that property.
- **Onsite Collection of Yard Waste Twice Annually** – Permitted collectors must arrange for the onsite collection of yard waste at least twice annually and give customers at least 30-days advance notice of the scheduled collections.

- **Additional Onsite Collection of Leaves** – Permitted collectors must schedule at least two separate collection days when leaves are collected onsite (curbside) between October 15 and December 15 annually.
- **Report Material Quantities** – Permitted collectors must complete monthly Lancaster County Solid Waste Management Authority manifests (material quantities) and provide them to East Lampeter Township upon request.
- **Obtainment of a Collectors Permit** – Persons wishing to collect solid waste and recyclable materials in the Township must obtain a permit from East Lampeter Township in order to do so. Additionally, the ordinance details what causes justify the suspension or revocation of a collectors permit.

The Township does not operate a solid waste and recycling program although it does license haulers to operate in the Township. The Township’s open-subscription program allows residents and business owners to select a waste and recycling hauler of their choice to collect solid waste and recyclable materials from their properties. As of June 2021, the Township’s website lists nine haulers that are licensed to provide waste and recycling collection services in the Township. In addition to providing solid waste services, licensed haulers are required to provide curbside or onsite recycling services to their customers. Per the Township’s recycling ordinance, licensed haulers must also schedule at least two curbside or onsite collections of yard waste, tires, and white goods each year. Residents may request and pick up a recycling bin at the Township office to use for the placement of recyclable materials.

To comply with Act 101 requirements for yard waste management, the Township has relied on the following programs:

- **Licensed Hauler Collections** – Licensed haulers operating in the Township are required to schedule two curbside collections of yard waste annually for their customers. Haulers must transport the yard waste collected through these programs to a composting/mulching facility.
- **Manheim Township Compost Park** - For many years, neighboring Manheim Township has allowed East Lampeter residents to use their Compost Park located at 2775 Oregon Pike in Lititz. The Compost Park, which was open seven days a week, allowed residents of East Lampeter Township to drop-off yard waste for composting and mulching at their convenience.

The option for East Lampeter Township residents to use Manheim Township’s Compost Park ended in late 2020 when Manheim Township’s Board of Commissioners voted to establish a key-card access system at the Compost Park. The implementation of this program coupled with increased quantities of grass clippings brought to the facility subsequently led to the closure of the Compost Park to non-residents.

4 FINDINGS

ACT 101 REQUIREMENTS

Act 101 requires mandated recycling communities to establish a program for recycling materials at residential, multi-family, commercial, institutional, and municipal establishments. It requires implementing a recycling ordinance that specifies the step-by-step requirements for recycling. These recycling requirements also require the diversion and composting of yard waste (referred to as “leaf

waste” in Act 101). Act 101 and DEP guidelines provide communities with two options for the management of yard waste, including:

- 1) Specify a day each month when leaf waste (defined as leaves, shrubbery, tree trimmings, and similar materials, but not including grass clippings) is collected curbside from residents.
- 2) Establish a scheduled day two times per year (once in the spring and once in the fall) when leaf waste is collected curbside AND facilitate a drop-off location or other collection alternative approved by the Department of Environmental Protection (DEP) that allows residents to drop off leaf waste for composting at least once per month.

The twice-annual curbside collection program required in the Township’s recycling ordinance coupled with Manheim Township’s allowance of East Lampeter residents to use their Compost Park provided for the Township’s compliance with Act 101 prior to the closure of Manheim Township’s Compost Park to East Lampeter residents.

OPTIONS

SCS Engineers identified the following options for East Lampeter Township to consider in re-establishing a yard waste management program that serves residents and complies with Act 101.

Require Monthly Curbside Collection by Licensed Haulers

Overview

For this option, the Township would place the onus on licensed haulers to set-up yard waste collection programs that provide curbside yard waste collection services on a monthly basis. The Township would be required to amend the current recycling ordinance (No. 258) and modify the current requirement of two curbside yard waste collections each year to 12 collections per year (monthly).

Benefits

- **Reduces Operational Action by Township** – This option can be considered the most “hands-off” approach the Township can take to maintain compliance. It effectively transitions the burden of arranging extra curbside yard waste collection to haulers. While the Township would still need to oversee the program and confirm compliance by haulers, the Township would not need to procure capital equipment nor arrange with another community for their residents to use a drop-off facility.
- **Provides for Resident’s Flexibility** – In requiring licensed haulers to expand curbside yard waste collection programs to monthly, residents retain their flexibility to arrange with the licensed hauler of their choice to provide this required service.
- **Increases Convenience for Residents** – Establishing a monthly curbside collection program for yard waste increases convenience to residents. Residents will no longer be required to transport yard waste in their own vehicles to a drop-off location as was previously required. Yard waste materials can simply be placed curbside for collection on a monthly basis.

Challenges

- **Requires Extra Collections by Licensed Haulers** – This option requires licensed haulers to significantly expand their curbside yard waste collection services from two to 12 annually (once per month). Haulers would need to demonstrate to the Township they can provide monthly curbside yard waste collection as part of the Township licensing program. Licensed haulers that do not have the equipment, staff, or other resources would not receive the approval needed to be a licensed hauler. This may reduce competition and limit residents' choice of material haulers.
- **Increases Costs to Residents** – The Township's solid waste program is set-up so that residents pay the full cost of solid waste services as individual home owner's contract with haulers separately for the collection of solid waste, recyclable materials, and yard waste. Expanding the number of curbside collections each year for yard waste from two to 12 will increase costs to haulers who will need to pass those costs on to residents in the form of higher collection fees.
- **Requires Special Preparation of Materials** – Although curbside collection of yard waste can be convenient for residents, residents must also follow the material preparation guidelines of their contracted hauler. This often requires the bagging of materials or cutting up branches to meet size limitations that are typically established. These material preparation steps are often time-consuming and can be challenging to complete.
- **Creates Additional Data Tracking Needs** – Requiring licensed haulers to provide curbside yard waste services does not relieve the Township of being responsible for maintaining an Act 101 compliant recycling program. The Township will still need to confirm that haulers are providing the proper services and that material quantities are reported in a timely manner (in order to qualify for DEP recycling performance grant funding). With multiple haulers operating in the Township under no organized collection system, the Township's administrative efforts to track haulers will increase as the Township should maintain records of each hauler's customer list for yard waste collection.
- **Compatibility with an Open Subscription System** – Requiring haulers provide monthly curbside yard waste collection is often easier in a franchised collection system where a hauler(s) must enter into an agreement with the jurisdiction (Township) to collect materials. The agreement and structure allows for a community to have greater control over materials collection that improves efficiency. In an open subscription system residents have the flexibility to change their hauler at almost any time, which makes program tracking and subsequently monitoring compliance more challenging.

Partner with Neighboring Community for Drop-Off Facility

Overview

For this option, East Lampeter Township would establish a formal agreement or partnership with a neighboring community that would allow East Lampeter residents to use the neighboring community's yard waste drop-off location. East Lampeter residents would likely be required to pay a full or reduced price tip fee to drop-off materials depending on the arrangement between East

Lampeter Township and the neighboring community. This option is similar to the arrangement East Lampeter had with Manheim Township. However, this option recommends the implementation of a formal signed written agreement between both entities that establishes the terms and conditions of the arrangement and would protect East Lampeter Township by not allowing the abrupt ending of service that compromises the Township's compliance obligations. Since East Lampeter Township is an Act 101 recycling community it is important that a formal partnership be established. **Figure 1** is a map of the private facilities considered and a more detailed description of each community/facility is provided below.

Benefits

- **Similar to Previous Program** – A partnership with a neighboring community to use an existing drop-off facility mirrors the previous program East Lampeter Township had with Manheim Township. East Lampeter residents would follow the same process/protocol for disposing of yard waste that includes transporting the material to a designated drop-off location for composting/mulching. Although a new arrangement with a neighboring community may have different rules than the previous program, the general concept of yard waste disposal would be the same reducing the learning curve for residents.
- **Equitable Costs to Residents** – By establishing an agreement with a neighboring municipality, East Lampeter Township may have the opportunity to negotiate the cost for their residents to use a facility that may stabilize tipping fees for residents. As a service to residents, East Lampeter Township might provide the partnering community with some funding that allows for reduced tipping fees for residents to use the facility. Additionally, a drop-off program shifts the costs of it to those residents who use it. In a curbside program, residents are required to have the monthly curbside service regardless of whether they participate each month. In a drop-off program, only those residents who require the service pay for it via tipping fees when they drop-off their materials.

Challenges

- **Potential Costs to Township** – For East Lampeter Township to be a true partner with another community in a yard waste management program, it may require the Township provide financial support to the facility beyond what residents would need to pay in tip fees. A partnership (i.e. contract/agreement) is necessary because of the compliance implications that exist if the “partner” were to abruptly prohibit East Lampeter residents from use of the site. It is in the Township's best interests for the facility to continue to operate and provide a service to Township residents.
- **Requirements must be Established and Communicated** – As with any agreement and partnership for usage of a yard waste drop-off facility, there will be procedures and protocols that must be followed by East Lampeter residents. It is the responsibility of the Township to understand the requirements of using a neighboring community's drop-off facility and clearly communicate those instructions to residents. This is not only important to protect the integrity of the program, but also to keep East Lampeter Township from breach of agreement/contract.

Communities

SCS researched communities in Lancaster County that have established yard waste drop-off programs. Three facilities or communities were identified as having a facility that may meet Township needs and provide convenient service to residents. These facilities/communities include the following:

- **West Earl Township's Compost Facility** – West Earl Township has established a Compost Facility that is located approximately six miles from East Lampeter Township. The facility accepts most types of yard waste and is set-up for non-residents to use. Non-residents pay a higher tip fee to drop-off materials. The facility is accessed 24-hours a day via an electronic key-card that is issued to people that are approved to use the facility. Based on conversations with the West Earl Township Manager there is interest in establishing formal agreements with neighboring communities due to the increased use of their facility by non-residents. West Earl Township is interested in talking further with East Lampeter Township staff about the possibility of working together on a regional yard waste management program.
- **Manheim Township's Compost Park** – Although Township residents were recently prohibited from using Manheim Township's Compost Park to drop-off yard waste, conversations SCS had with Manheim Township staff indicate the potential exists to reestablish an arrangement. Use of the Compost Park was limited to only Manheim Township residents in spring 2021 because of the significant quantities of grass clippings received at the Compost Park each year. Excess grass cannot be incorporated into Manheim's composting operations and as a result Manheim Township had to limit drop-off of grass clippings as the growing season progressed. By limiting Compost Park users to only residents, Manheim Township believes they will not have to turn away residents who want to dispose of grass clippings. In an interview with Manheim Township staff, they recommended that East Lampeter Township petition their Board of Commissioners to regain access to the Compost Park. It is unknown how receptive the Commissioners will be to reopening the Compost Park to non-residents. However, the potential for an agreement may be enhanced if East Lampeter Township might offer some concessions, such as agreeing not to let residents dispose of grass clippings at the Compost Park. Since grass clippings are not included in the definition of "leaf waste" under Act 101, the Township would not be in violation if residents did not have a way to divert those materials from disposal.
- **Lancaster County Solid Waste Management Authority's (LCSWMA) Frey Farm Landfill** – LCSWMA owns and operates a composting and grinding operation at the Frey Farm Landfill in Conestoga. This facility is approximately 18 miles from East Lampeter Township and allows residents to dispose of all types of yard waste, including grass clippings and stumps for a flat fee of \$15 for up to one ton of materials. LCSWMA has an agreement with Manor Township to serve as the primary disposal site for residents' yard waste and they would consider establishing agreements with other communities as well. SCS notes that although yard waste material is composted at the Frey Farm Landfill, the compost is used in landfill operations, which may not comply with Act 101.

Partner with Private Facility

Overview

Similar to partnering with a neighboring community, Act 101 allows East Lampeter Township to partner with a privately owned facility for residents to drop-off yard waste for composting and mulching. East Lampeter Township is required to establish a formal agreement with the owners of the private facility and communicate with residents on their authorization to use the site at least every six months. **Figure 1** is a map of the private facilities considered.

Benefits

- **Similar to Previous Program** – Partnering with a private company for residents usage of yard-waste drop-off site would be similar to the previous program with Manheim Township or an arrangement with another municipality. East Lampeter residents would follow the same process/protocol for disposing of yard waste that includes transporting the material to a designated drop-off location for composting/mulching. Although a new arrangement with a private company may have different rules than the previous program, the general concept of yard waste disposal would be the same reducing the learning curve for residents.
- **Equitable Costs to Residents** – By implementing an agreement with a private entity, East Lampeter Township may have the opportunity to negotiate the cost for their residents to use a facility that can help stabilize tipping fees for residents. As a service to residents, East Lampeter Township might provide the private entity with some funding that allows for reduced tipping fees for residents to use the facility. Additionally, this type of program shifts most of the costs of the program to those residents who use it. In a curbside program, residents would be required to have the monthly curbside service regardless of whether they participate each month. In a drop-off program, only those residents who require the service will pay for it via tipping fees when they drop-off their materials.

Challenges

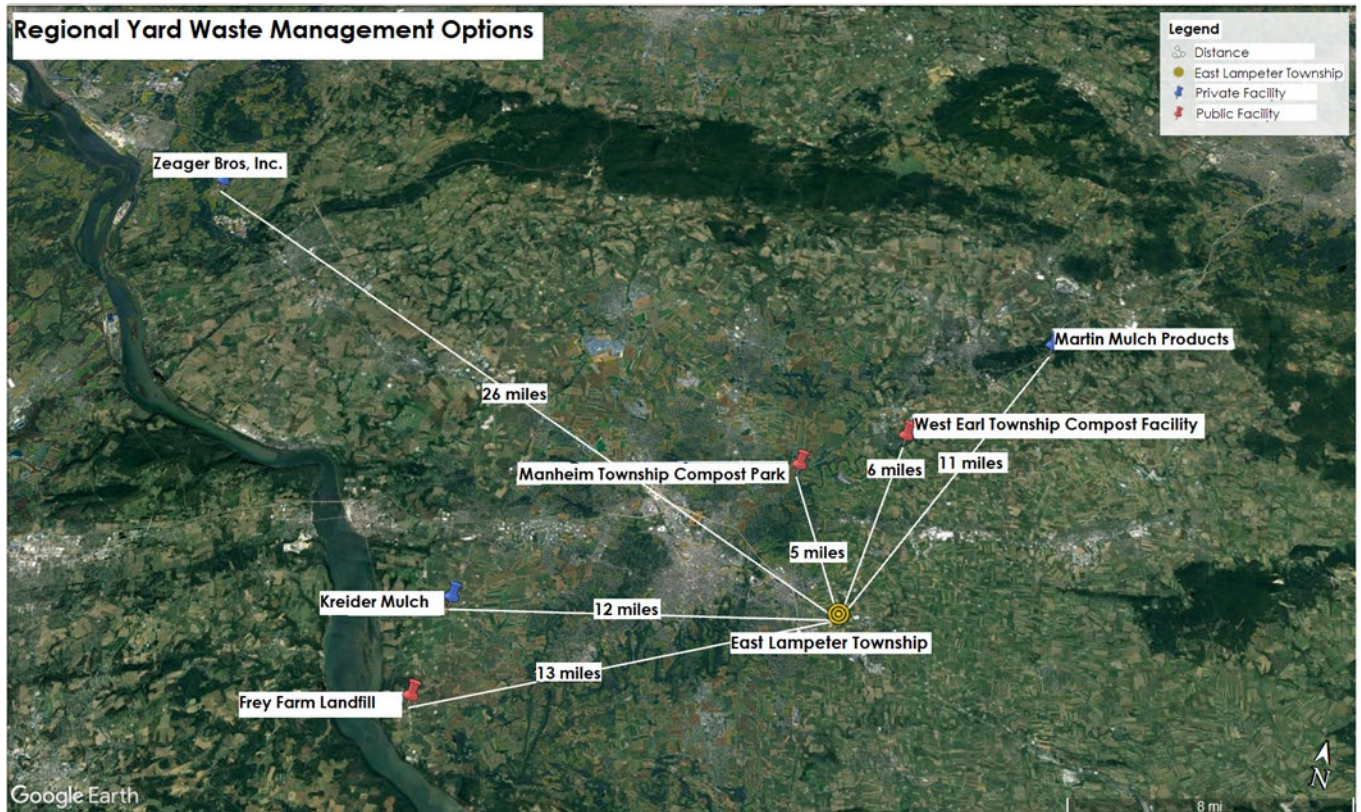
- **Potential Costs to Township** – For East Lampeter Township to be a true partner with a private entity in a yard waste management program, it may require the Township provide financial support beyond what residents would need to pay in tip fees. A partnership (i.e. contract/agreement) is necessary because of the compliance implications that exist if the “partner” were to abruptly prohibit East Lampeter residents from use of the site. It is in the Township’s best interests for the private entity to remain in business and continue to operate and provide a service to Township residents.
- **Requirements must be Established and Communicated** – As with any agreement and partnership for residents usage of a yard waste drop-off facility, there will be procedures and protocols that must be followed. It is the responsibility of the Township to understand the requirements of using a private entity’s drop-off facility and clearly communicate those instructions to residents. This is not only important to protect the integrity of the program, but also keep East Lampeter Township from breach of agreement/contract.

Private Entities

SCS researched private facilities in Lancaster County that have the potential to be designated yard waste management sites for East Lampeter Township residents. These facilities include the following:

- **Kreider Mulch** – Kreider Mulch is located in Washington Borough approximately 13 miles west of East Lampeter Township. This facility is open to the public and accepts yard waste for a flat fee of \$10 for a two-axle vehicle. The tip fee increases for larger vehicles. Customers can purchase a variety of mulch products from this facility. Kreider Mulch only accepts woody yard waste materials from the public. Yard waste such as leaves, grass clippings, and non-woody garden residues are not accepted. The limited types of material accepted at this facility poses concerns for compliance with Act 101 as not all materials required for composting can be diverted at this facility.
- **Martin Mulch Products** – Martin Mulch Products is a privately owned facility that is open to the public for the drop-off of all types of yard waste including leaves, grass clippings, garden residues, and woody materials. The facility is open from dawn to dusk Monday through Saturday and is located about 11 miles northeast of the Township. A partnership or agreement with Martin Mulch Products appears to facilitate compliance with Act 101.
- **Zeager Brothers** – Zeager Brothers is a composting facility located about 26 miles northwest of East Lampeter Township. The facility is open to the public Monday through Saturday and allows individuals to drop-off yard waste for composting. SCS attempted to contact Zeager Brothers three times and was unable to schedule an interview with staff to obtain additional information on the facility. Based on information available on their website, it appears a partnership with Zeager Brothers would facilitate compliance with Act 101.

Figure 1. Map of Potential Yard Waste Management Facilities



Establish Drop-Off Location

Overview

Another opportunity for East Lampeter Township to provide yard waste management services to residents is to develop its own drop-off facility within the Township. The Township identified the property at 133 Buckwalter Road as having the potential to being developed as a drop-off facility. This property is centrally located in the Township directly adjacent to the Township's existing campus. The site is approximately 45-acres in size although it is unlikely an established drop-off location will require use of the entire site footprint. The Township does not own the property so the Township would need to either purchase the property or lease it from the owner in order to develop a facility. SCS did not complete a site visit to observe features and conditions that may or may not make it suitable for a yard waste drop-off facility.

Township staff indicated that developing and investing in a drop-off facility would not be a priority for them at this time. The Township does not directly provide solid waste services and would need to expand their staff and resources to complete such a project. Developing and maintaining of a yard waste drop-off facility will likely be the most expensive and time-consuming option identified for the Township to pursue. However, if no arrangements can be made with haulers or the owners of nearby facilities this option will need further consideration and will require a detailed feasibility study. SCS notes that the Act 101 Section 902 Recycling Grant could be a potential funding source for developing such a facility.

Figure 2 includes a map of the Township and the potential drop-off facility's location at 133 Buckwalter Road along with a Google Earth image.

Figure 2. Potential Drop-Off Site Location

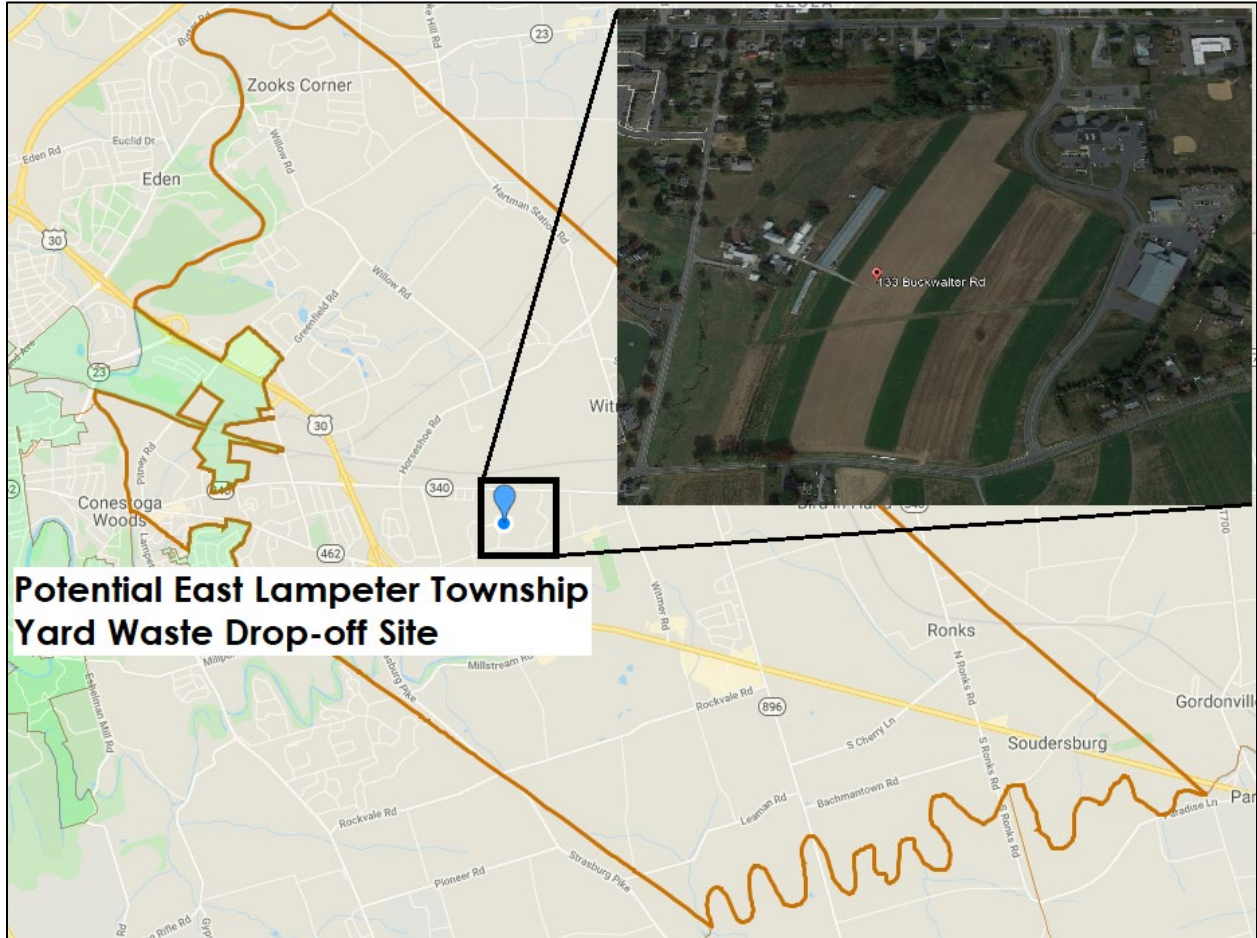


Table 1 summarizes the details of each public and private sector facility that East Lampeter Township could pursue an agreement or partnership with to manage yard waste.

Table 1. Yard Waste Management Facilities

Facility	West Earl Township	Manheim Township	Frey Farm Landfill	Martin Mulch Products	Zeager Bros. Inc.	Kreider Mulch
Public/Private	Public	Public	Public	Private	Private	Private
Distance from Township Office	~6 miles	~5 miles	~13 miles	~11 miles	~26 miles	~12 miles
Hours	24 hours/day, seven days/week, 365 days/year	8 a.m. to 5 p.m. - M-F, Jan - March; additional hours vary by season	M-F: 7 to 3:30 p.m., Sat. 7-11 a.m. - arrive by 3:00 p.m. to be offsite by 3:30 p.m.	Drop Monday - Saturday - daylight hours only	M-F: 8 a.m. to 6 p.m. , Sat. 8 a.m. to 3 p.m.	M -F: 7 a.m. to 6 p.m., Sat. 7 a.m. to 2 p.m.
Accessible	Key-card system; issued by Township	Key-card system; issued by Township	Open to the public during operating hours	Open to the public during operating hours	Open to the public during operating hours	Open to the public during operating hours
Onsite Attendant?	No	Yes	Yes	Yes	Yes	Yes
Materials	Leaves, grass clippings, garden residues, shrubbery and tree prunings, branches	Leaves, grass clippings, garden residues, shrubbery and tree prunings, branches	Leaves, grass clippings, garden residues, shrubbery and tree prunings, branches, logs and stumps	Leaves, grass clippings, garden residues, shrubbery and tree prunings, branches	N/A	Shrubbery and tree prunings; only woody materials
Tip Fee	Residents: \$1.50/trip; unlimited, Non-Residents: \$20/trip residents, \$50/trip commercial users	Available to residents only: \$2 for car/SUV \$15 car trailer combination, \$10 for pick up truck or trailer, \$15 per dump truck/box truck/pickup with sideboards, \$20 for dump truck+trailer	\$15 flat fee up to 1 ton; \$30/ton for each ton thereafter	\$1 per bag, \$1 per trash barrel, \$10 for pick-up truck, \$15-\$20 for a trailer load, flat fee	N/A	\$10 flat fee for two-axle vehicles, \$35 flat for dump truck
Limits on Material Quantities Per Trip?	No limits	No limits	No limits	No limits	N/A	No limits
Mulch/Compost Available	Yes, for free; must be loaded by hand (no large equipment)	Yes, for free while supplies last	No	Yes, for purchase	Yes, for purchase	Yes, for purchase

Yard Waste Management Options (continued)

Facility	West Earl Township	Manheim Township	Frey Farm Landfill	Martin Mulch Products	Zeager Bros. Inc.	Kreider Mulch
Arrangements with Other Communities?	Upper Leacock, agreement until the end of 2021; residents get a discount of \$10/trip key card and in exchange Upper Leacock will take excess mulch off the site and get rid of it	No arrangements	Agreement with Manor Township; may consider arrangements with other communities; must contact the permitting office	No arrangements	N/A	No arrangements
Security	Gated and fenced; cameras in use	Gated and fenced	Gated and fenced	Gated and fenced	Gated and fenced	Gated and fenced
Act 101 Compliance	Yes, with written agreement	Yes, with written agreement	No, leaf waste is used in landfill operations	Yes, with written agreement	Yes, with written agreement	No, does not accept all materials defined as leaf waste
Contact	Jenna Seesholtz, Township Manager (717) 859-3201 manager@westearltpw.org www.westearltpw.org	Phil Mellott, pmellott@manheimtownship.org (717) 569-6408 x1115, www.manheimtownship.org	(717) 397-9968, info@lcswwa.org, www.lcswwa.org/facilities/ frey-farm-landfill	(717) 733-1602, martin-mulch-products.hub.biz	(800) 346-8524, info@zeager.com, www.zeager.com	(717) 871-9177, www.kreidermulch.com
Additional Information	West Earl allows materials to be bundled with twine or contained in paper bags (no plastic bags); materials are processed into mulch and compost onsite	Manheim Township Board of Commissioners recently voted to close their Compost Park to non-residents due to excess amounts of grass clippings; currently only Manheim Township residents are allowed to use the Compost Park	Lancaster County Solid Waste Management Authority manages the Frey Farm Landfill. Branches brought to the landfill must be less than 24 inches in diameter and stumps must be less than 6. Municipalities have information regarding yard waste bags and information on composting.	All organic materials may be mixed together for delivery to the site.	N/A	Kreider mulch does not accept yard waste, only woody materials.

5 PRIORITIZATION OF OPTIONS

Based on the research and interviews conducted for this study, SCS Engineers developed a list of four priority options for the Township to establish a yard waste management program. In identifying these options, SCS prioritized the following: 1) Compliance with Act 101; 2) Convenience to residents; 3) Reduced costs for residents. Note that SCS did not complete a cost analysis for each option. The cost of each option to the Township and/or residents will be based on the scope of services and agreement that is made with a particular entity. The prioritized options are as follows:

- **Option #1 – Pursue Agreement with West Earl Township** – Based on the research and initial discussions with staff from all facilities identified, SCS recommends that East Lampeter Township pursue an agreement with West Earl Township to use their Compost Facility. Conversations SCS had with the Township Manager indicated West Earl Township is open to making arrangements with other communities to partner with their Compost Facility. The West Earl Township Manager indicated a plan to begin conversations on potential partnerships in the near future. The West Earl Compost Facility is located only about six miles from East Lampeter Township and should provide relatively convenient access to residents. West Earl Township’s Compost Facility accepts all yard waste materials required by Act 101 for diversion. Use of the Compost Facility will cost residents or the Township; however, because the Compost Facility is owned and operated by West Earl Township tipping fees may be less than at a privately owned facility.
- **Option #2 – Pursue Agreement with Manheim Township** – Another option for East Lampeter Township to reestablish a yard waste management program is to re-explore the opportunity to partner with Manheim Township. Although Manheim Township recently restricted access to their Compost Park, there may be opportunities for East Lampeter Township to reestablish an agreement with Manheim, particularly if East Lampeter Township might agree to certain conditions such as restricting the drop-off of grass clippings from their residents. Since grass clippings are excluded from the definition of leaf waste under Act 101, this option would allow East Lampeter Township to comply with state recycling requirements. East Lampeter Township can initiate a discussion with Manheim Township’s Board of Commissioners to explore this opportunity further. Manheim Township’s Compost Park provides a convenient cost-effective solution for residents to dispose of yard waste.
- **Option #3 – Pursue Agreement with Martin Mulch Products** – Should East Lampeter Township be unable to come to an agreement with either West Earl or Manheim Townships, SCS recommends exploring a partnership with Martin Mulch Products located in Ephrata, approximately 11 miles from the Township. Martin Mulch Products is a privately owned and operated facility that is open to the public for drop-off of all types of Act 101 required leaf waste materials. The facility is open Monday through Saturday and also produces compost and mulch products for sale. Both woody and other yard wastes can be mixed together facilitating convenience for residents. This facility is located further from East Lampeter Township than the West Earl and Manheim Townships’ facilities. Tip fees at Martin Mulch Products are generally higher than for the West Earl and Manheim facilities, although the Township might have an opportunity to negotiate the rate in developing a contract with them.
- **Option #4 – Require Monthly Curbside Collection by Licensed Haulers** – The fourth option for the Township to consider is modifying their yard waste management program whereby all

yard waste recycling services are provided curbside by licensed haulers. This program type would be a significant shift for the Township and residents. To implement this program, the Township would need to amend its current recycling ordinance to require licensed haulers provide separate curbside collection of yard waste no less than once per month. The Township would need to specify that all materials defined as leaf waste in Act 101 are required for collection. A curbside program provides added convenience to residents who would no longer be required to transport materials to a drop-off location. This program would not preclude residents from taking materials to a drop-off location if stockpiling materials for up to one month is not feasible. This option would likely be the most costly to residents as it results in greater convenience with curbside service provided each month. Finally, the Township would need to modify their existing reporting mechanisms so that licensed haulers report the quantity of yard waste materials collected to the Township.

6 CONCLUSION

East Lampeter Township has multiple options and opportunities available to them to re-establish their yard waste management program. The hierarchy of four options provided above all allow the Township to meet their Act 101 recycling obligations. SCS's prioritization of each option is primarily based on the convenience to residents and to a lesser extent on anticipated costs. Interviews that SCS staff conducted with representatives of the facilities for Options 1 – 3 (above) indicate there is an initial interest in talking further with East Lampeter Township to arrange an agreement.

Appendix A
Municipal Recycling Requirements of Act 101

Summary of Act 101 Mandatory Municipal Recycling Requirements

Overview

Chapter 15, Section 1501 of the Pennsylvania Municipal Waste Planning Recycling and Waste Reduction Act (Act 101), outlines the requirements for large municipalities to recycle. Municipalities, other than counties, with a population of 10,000 or more people or with a population of more than 5,000 but less than 10,000 people, and a population density of more than 300 people per square mile, are mandated to recycle.

Recycling Ordinance

An Act 101 mandated local government must adopt an ordinance that requires recycling. The ordinance shall require the following:

- 1) Recycling at single-family homes and apartments; commercial, municipal, and institutional establishments; and at community activities.
- 2) A scheduled day, at least once per month, when separated recyclable materials are to be placed at the curb or similar location for collection.
- 3) A collection system, including trucks and related equipment, to pick-up separated recyclable materials from the curb or similar location at least once per month from homes and businesses in the municipality. The municipality shall explain how the system will operate, the dates of collection, the responsibilities of persons within the municipality and incentives and penalties.
- 4) Provisions to ensure compliance with the ordinance, including incentives and penalties.
- 5) Provisions for the recycling of collected materials.

Residential Recycling

Residents must separate for recycling at least three materials deemed appropriate by the municipality from municipal waste generated at their homes, apartments, or other residential establishments. Separated materials must be stored at the property until collection. The three materials must be selected from the following:

- Clear glass;
- Colored glass;
- Aluminum;
- Steel and bimetallic cans;
- High-grade office paper;
- Newsprint;
- Corrugated paper;
- Plastics.

Leaf waste must also be separated from municipal waste generated at residential properties and stored for collection, unless residents have already provided for the composting of the materials (i.e. backyard composting).

Owners or landlords of multi-family rental properties with four or more units must establish a recycling collection system at each property. The collection system must include suitable containers for collecting and sorting materials, easily accessible locations for the containers and written instructions to the occupants concerning the use and availability of the collection system. Owners or landlords that comply with these requirements shall not be liable for noncompliance by occupants of their buildings.

Commercial, Municipal, and Institutional Recycling

Occupants of commercial, municipal, and institutional establishments are required separate and store for recycling of the following materials at a minimum:

- High-grade office paper
- Aluminum;
- Corrugated paper;
- Leaf waste.

Occupants of commercial, municipal, and institutional establishments may be exempt from the requirements of this law if those persons have otherwise provided for the recycling of materials they are required to recycle. To be eligible for an exemption, the commercial, municipal, or institutional generator must provide written documentation to the municipality annually.

Community Activity Recycling

Organizers of community events must provide for the separation, storage, and collection of high-grade office paper, aluminum, corrugated paper, and leaf waste at the events. Community activities required to recycle include events sponsored in whole or in part by a municipality or held within a municipality and sponsored privately. Events include fairs, bazaars, picnics, or sporting events that will be attended by more than 200 or more people each day of the event.

Leaf Waste Diversion

Municipalities mandated to recycle under Act 101 must require residential and commercial establishments to separate and store leave waste for collection. Leaf waste includes leaves, shrubbery, tree trimmings, and similar materials, excluding grass clippings. These materials must be collected at least monthly. In order to comply with Act 101, mandated municipalities must at a minimum:

- 1) Implement an ordinance that requires leaf waste to be separated from municipal waste for recycling at residential and commercial, municipal, and institutional establishments, AND
- 2) Establish a scheduled day, at least once per month, when leaf waste is collected curbside or similar location, OR
- 3) Establish a scheduled day, no less than two times per year and preferably in the spring and fall, when leaf waste is collected curbside or similar location from residential and commercial establishments, AND facilitate a drop-off location or other collection alternative approved by the Pennsylvania Department of Environmental Protection that allows persons to drop-off leave waste for composting at least once per month. A leaf waste drop-off site can be in a neighboring municipality or at a private establishment provided there is an agreement in place to utilize the site, and residents and occupants of commercial establishments are informed of the drop-off location at least every six months.

Municipalities are encouraged to manage source separated Christmas trees as leaf waste for processing at DEP approved composting facilities.

Public Education and Outreach

Municipalities subject to the requirements of Act 101 must implement a comprehensive and sustained public education program. This program is to provide residents and owners/tenants/occupants of commercial, municipal, and institutional establishments with information on recycling program features and requirements. The educational program includes two features:

- **Initial Education** – At least 30-days prior to the start of a recycling program notify all persons occupying residential, commercial, municipal, and institutional establishments of the recycling requirements as contained in the ordinance.
- **Sustained Education** – Every six months the municipality must inform and remind all persons occupying residential, commercial, municipal, and institutional establishments of the recycling requirements.

Numerous forms of educating the public are acceptable and include:

- Newspaper advertisement circulating in the municipality;
- Public notice posted where such notices are customarily posted;
- Notices in other official notifications (i.e. utility bills);
- Website;
- Newsletter;

A combination of forms are acceptable and at least one form must be in print annually.

Implementation

Municipalities may implement their responsibilities for the collection, transportation, processing, and marketing of recyclable materials in one or a combination of the following ways:

- 1) Collect, transport, process, and market recyclable materials themselves;
- 2) Enter into a contract(s) with other entities for the collection, transportation, processing, or marketing of recyclable materials. If contracting for recycling services, the entity being contracted is responsible to the municipality for implementing of recycling activities.
- 3) Contract with a landfill or material recovery facility, in lieu of a curbside recycling program, that guarantees by contract that at least 25 percent of the waste received is recycled. The technology utilized in this program must have prior approval from DEP.
- 4) Utilize a recycling facility that demonstrates that the materials separated, collected, recovered, or created by the facility can be marketed as readily as materials collected through a curbside recycling program. In addition, the mechanical separation technology used by the facility has been demonstrated to be effective for the life of the facility.

Exceptions

The municipality is not required to collect, transport, process, or market recyclable materials or contract for these services if all of the following conditions are met:

- 1) The municipality is not collecting and transporting municipal waste from such establishment or activity.
- 2) The municipality has not contracted for the collection and transportation of municipal waste from such establishment or activity.
- 3) The municipality has adopted an ordinance as required, and the establishment or activity is in compliance with the provisions of the ordinance.

Act 140 Requirements for Section 904 Recycling Performance Grants

Overview

Act 101 was amended in 2006 by Act 140 to establishment requirements for the use of Section 904 Recycling Performance Grants.

Requirements

Municipalities mandated to recycle under Act 101 and receive more than \$10,000 in funding from recycling performance grants must meet the following requirements:

- 1) Requires, through ordinance, that all residents have waste and recycling service.
- 2) Has an implemented residential recycling program and facilitates a commercial recycling program or participates in a similar county or multi-municipal program.
- 3) Has a residential and business recycling education program.
- 4) Has a program of enforcement that periodically monitors participation, receives complaints and issues warnings for required participants and provides fines, penalties, or both, in its recycling ordinance.
- 5) Has provisions, participates in a county or multi-municipal program or facilitates a private sector program for the recycling of special materials.
- 6) Sponsors a program, facilitates a program or supports an organization to address illegal dumping and/or littering problems.
- 7) Has a person or entity designated as recycling coordinator who is responsible for recycling data collection and reporting recycling program performance in the municipal or municipalities.

If these requirements are not satisfied by the municipality, then the grant funds awarded under this section must be expended by the municipality only to satisfy these requirements. If all these requirements are satisfied, then the grant funds awarded may be used for any expense as selected by the municipality.