

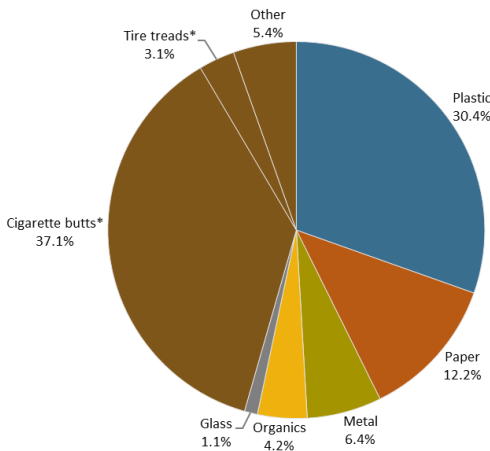
# LITTER IN PENNSYLVANIA

## RESULTS FROM THE 2019 PENNSYLVANIA LITTER RESEARCH STUDY

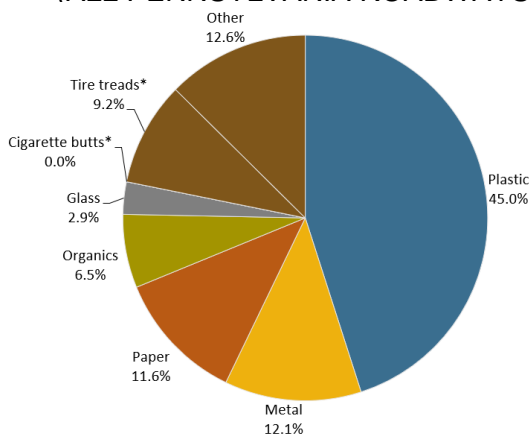
### SUMMARY OF KEY FINDINGS

Reducing littering behavior is key to a clean and beautiful Pennsylvania. The 2019 Pennsylvania Litter Study provides a comprehensive understanding of the litter issue in Pennsylvania, allowing for the development of tailored strategies and initiatives to combat litter within the Commonwealth. In addition, the Study provides a basis for future measurement of progress towards reducing litter.

#### AGGREGATE COMPOSITION OF LITTER (ALL PENNSYLVANIA ROADWAYS)



#### TYPES OF LITTER 4-INCH PLUS (ALL PENNSYLVANIA ROADWAYS)



\* Cigarette butts and tire treads were the majority of other litter material group. Therefore, other material group subdivided into cigarette butts, tire treads and other.

#### KEY FINDINGS

Litter impacts quality of life, the natural environment and economic development in communities across Pennsylvania.

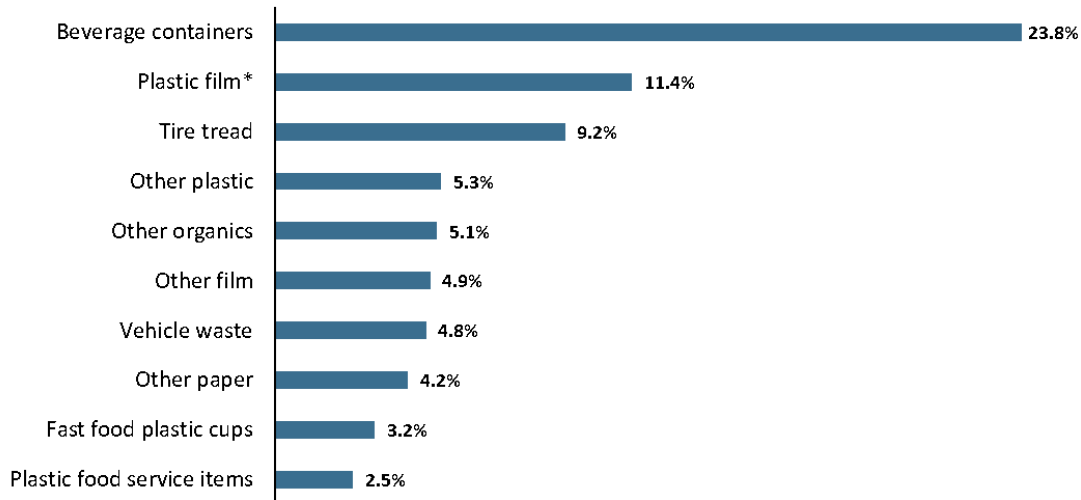
- **Over 500 million pieces of litter can be found on Pennsylvania's roadways.**
- **Cigarette butts and plastic collectively compose the majority of litter items.** Of the total estimated litter, 186.2 million (37.1 percent) were cigarette butts followed by 152.9 million (30.4 percent) pieces of plastic. Plastics represent 45 percent of all visible litter 4 inches or greater.
- **The composition of litter varies by the size of the litter item.** Beverage containers and plastic film, including plastic trash bags, other plastic bags and food packaging film, were the most predominant types of larger litter. Cigarette butts are the most common smaller items.
- **Over 40 million beverage containers and fast food products are littered on Pennsylvania roadways.** An estimated 29.3 million beverage containers and 12.3 million fast food products are currently littered on Pennsylvania roadways.
- **Motorists and pedestrians are leading sources of litter for both small and large items.** For litter items greater than four inches, improperly secured loads also become a factor.
- **Freeways and expressways had the most litter items per mile.** Freeways and expressways had the most litter per mile (7,523 litter items per mile on average). In contrast, local roads had the lowest littered items per mile (1,034 litter items per mile on average).

The 2019 Pennsylvania Litter Research Study was prepared by Burns and McDonnell, funded by the Pennsylvania Departments of Environmental Protection and Transportation. The study used methodology developed by Keep America Beautiful. All contents Copyright 2019 Keep Pennsylvania Beautiful.

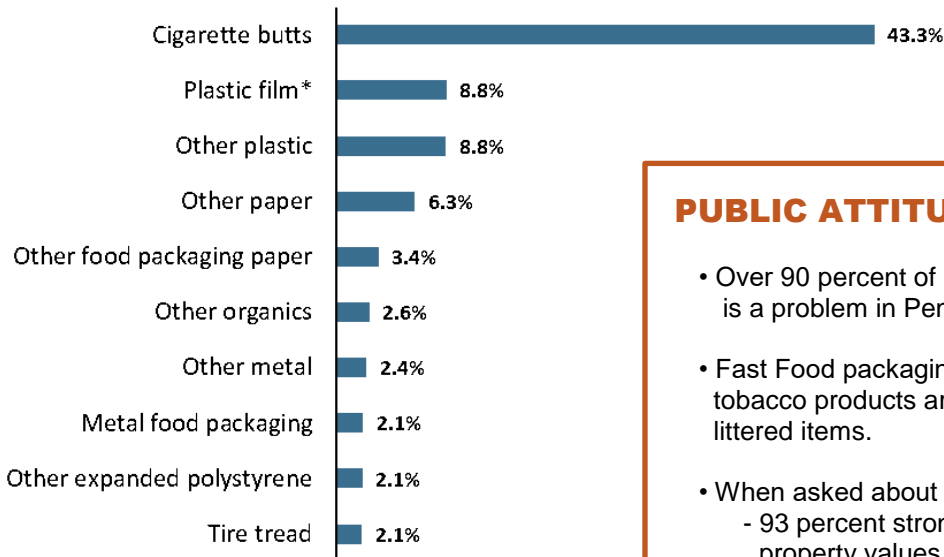
# LITTER IN PENNSYLVANIA

## RESULTS FROM THE 2019 PENNSYLVANIA LITTER RESEARCH STUDY

### TOP 10 AGGREGATE LITTER ITEMS 4-INCH PLUS LITTER BY COUNT (ALL ROADWAYS)



### TOP 10 AGGREGATE LITTER ITEMS 4-INCH LESS LITTER BY COUNT (ALL ROADWAYS)



\* Plastic film includes plastic trash bags, other plastic bags, food packaging film and other film material categories.

#### PUBLIC ATTITUDE SURVEY: FINDINGS

- Over 90 percent of survey respondents reported that litter is a problem in Pennsylvania.
- Fast Food packaging, plastic film, beverage containers and tobacco products are perceived to be the most commonly littered items.
- When asked about the impacts of litter:
  - 93 percent strongly agree or agree that litter reduces property values,
  - 87 percent strongly agree or agree that litter negatively impacts tourism and business,
  - 76 percent strongly agree or agree that litter causes taxes to increase because of cleanup costs.

For more public attitudes about litter, view the 2019 Pennsylvania Litter Research Study.