

**FINAL
Environmental Indicator Inspection Report
For
Former CE-Cast Facility
Muse-Bishop Road
Muse, PA 15350**

USEPA ID # PAD 045 873 197

**PADEP CONTRACT NO. ME-359186
WORK REQUISITION NO. 30-147**

Submitted to:



**Commonwealth of Pennsylvania
Department of Environmental Protection
Central Office
Rachael Carson State Office Building
Harrisburg, PA 17105-8471**



**United States Environmental Protection Agency
Region III
1650 Arch Street
Philadelphia, PA 19103-2039**

December 2003



**Tetra Tech FW, Inc.
One Oxford Valley – Suite 200
Langhorne, PA 19047 - 1829**



**APPENDIX A
INSPECTION PHOTOGRAPHS
FORMER CE-CAST FACILITY
MUSE, PA 15350**



Picture #1 - Residential area on Acorn Way.



Picture #2 - Old mine shaft.



Picture #3 - Railroad siding area.



Picture #4 - Area of MW-4.



Picture #5 - Former plant area.



Picture #6 - Former lagoon area.



Picture #7 - Unnamed tributary.



Picture #8 - Unnamed tributary.



Picture #9 - Sedimentation pond.



Picture #10 - Former buried drum area/



Picture #11 - Outfall from underdrain of landfill.



Picture #12 - Wetlands - area of MW903.



Picture #13 - Landfill.



Picture #14 - Landfill cleanout.

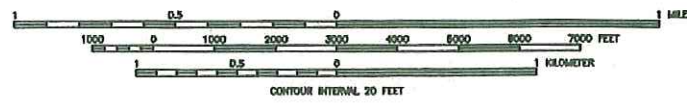
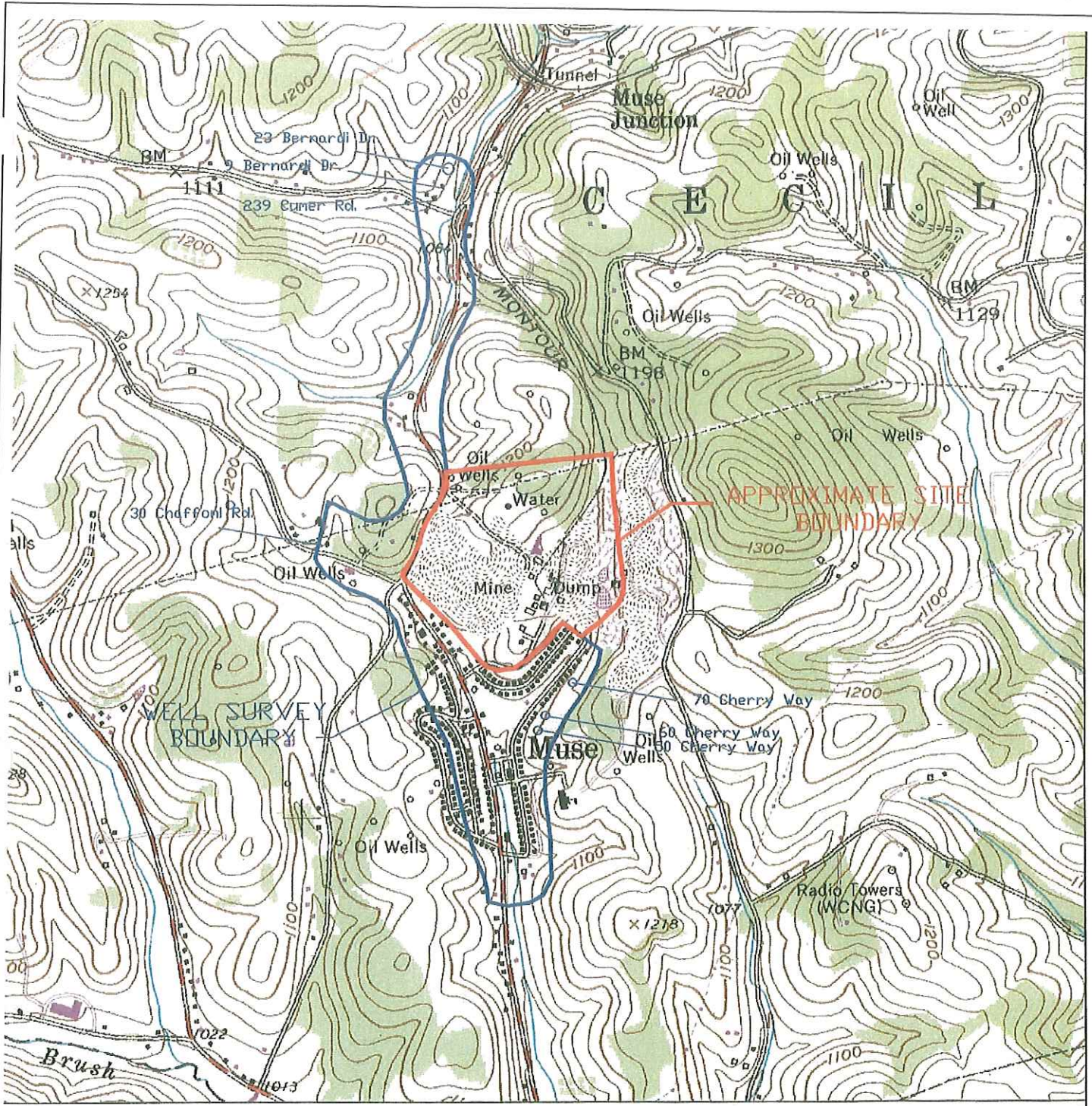


Picture #15 - Production well.



Picture #16 - Former tank area.

APPENDIX B
SITE LOCATION MAP
FORMER CE-CAST FACILITY
MUSE, PA 15350



Commonwealth of Pennsylvania
Department of Environmental Protection

FORMER CE CAST FACILITY
Muse, Pennsylvania

Figure 1
Site Location Map

 **TETRA TECH FW, INC.**
Formerly Foster Wheeler Environmental Corporation

LEGEND:

- LF-1 LANDFILL WELLS INSTALLED 1980
- MW-203 MONITORING WELL LOCATION INSTALLED 1990'S
- ▲ SD-202 SEDIMENT SAMPLE LOCATION (1992-1993)
- ▲ SW-101 SURFACE WATER SAMPLE LOCATION (1992-1993)
- SOIL-3 SOIL REMEDIATION AREAS (1995)
- APPROXIMATE SITE BOUNDARY
- ||||| FORMER RAILROAD TRACKS
- ARBITRARY BOUNDARIES BETWEEN FOUR AREAS OF SITE: LANDFILL, MAIN PLANT, COAL REFUSE AND UNDEVELOPED
- ☁ APPROXIMATE AREA EXCAVATED AND PLACED IN LANDFILL 1980
- * — ACTUAL UNDERDRAIN ALIGNMENT BASED ON 2002
- *A* IS APPROXIMATE LOCATION OF HISTORIC OUTFALL
- *B* IS CURRENT LOCATION. THE "—" SYMBOL REPRESENTS ALIGNMENT PRESENTED IN 1980 DESIGN DOCUMENTS

1. LOCATION OF TRIBUTARY AND PROPERTY BOUNDARY ARE APPROXIMATE.
2. CLOSED LANDFILL AND SEDIMENT POND ARE PRIMARY FEATURES SINCE 1996, REMAINDER OF THE PROPERTY IS VACANT GRASS, AND WOODED LAND.
3. SEDIMENT POND CONSTRUCTED IN 1995 IS PART OF THE SOIL'S REMEDIATION. OTHER SURFACE CONTOURS IN THE MAIN PLANT AREA MAY BE DIFFERENT DUE TO 1995 REMEDIAL ACTIVITIES.

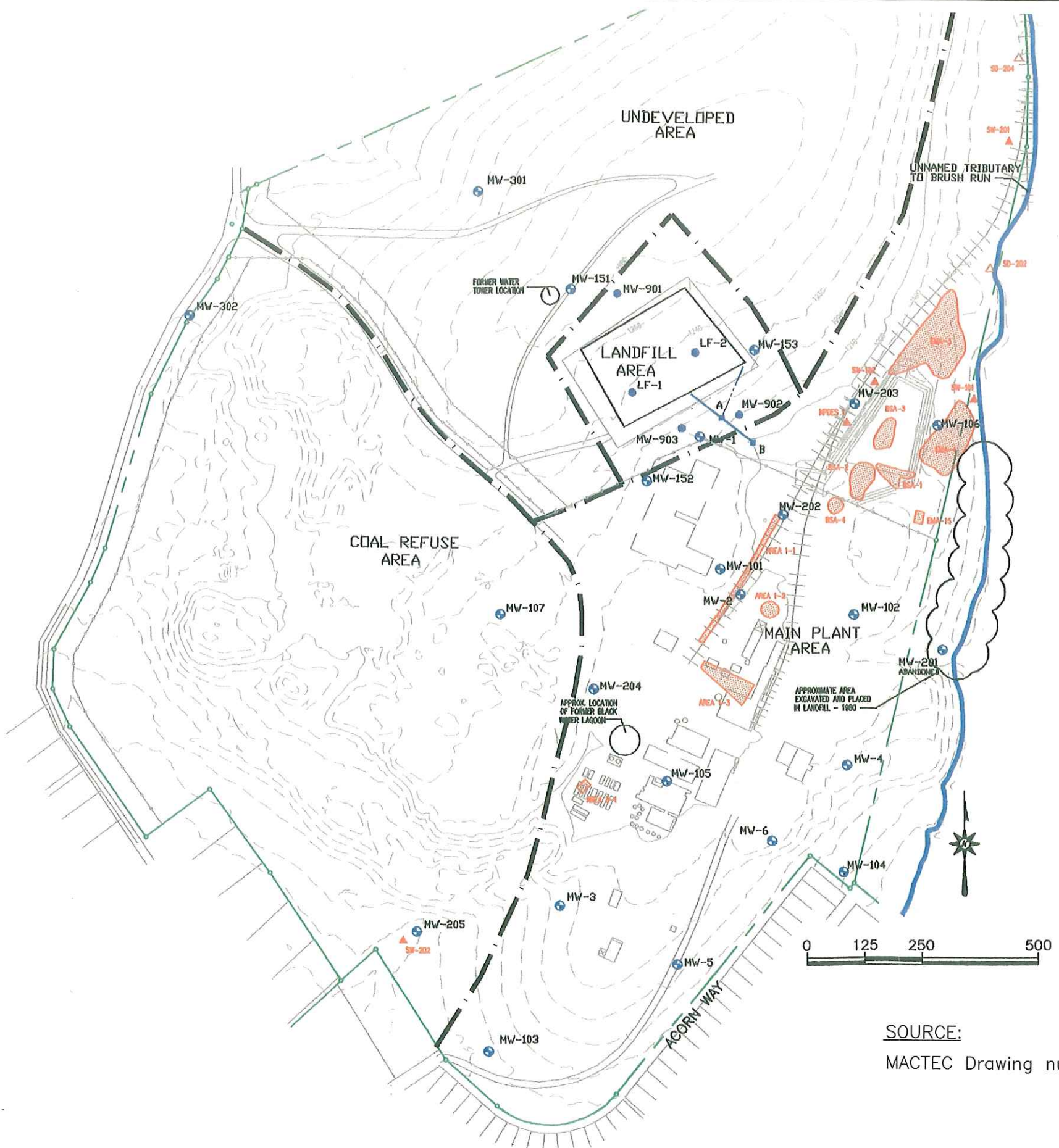
DRAFT

REFERENCES:

DRAWING NO. 910708 TITLED "SURVEY, COMBUSTION ENGINEERING SUBDIVISION NO. 1 CECIL TOWNSHIP, WASHINGTON CO." DATED 7/8/91 BY MOUNTS ENGINEERING. SURVEYED BY JONATHAN MOUNTS
 PLAN REFERENCED FROM ABB FIGURE 5832-23 G PLATE 3.

SOURCE:
 MACTEC Drawing number B01.DWG, 2/3/2003

Commonwealth of Pennsylvania Department of Environmental Protection
FORMER CE CAST FACILITY Muse, Pennsylvania
FIGURE 2 SITE PLAN
 TETRA TECH FW, INC. Formerly Foster Wheeler Environmental Corporation



- LF-1 LANDFILL WELLS INSTALLED 1980
- MW-203 MONITORING WELL LOCATION INSTALLED 1990'S
- △ SD-202 SEDIMENT SAMPLE LOCATION (1992-1993)
- ▲ SW-101 SURFACE WATER SAMPLE LOCATION (1992-1993)
- ☐ DM-1 SOIL REMEDIATION AREAS (1995)
- APPROXIMATE SITE BOUNDARY
- ||||| FORMER RAILROAD TRACKS
- ARBITRARY BOUNDARIES BETWEEN FOUR AREAS OF SITE: LANDFILL, MAIN PLANT, COAL REFUSE AND UNDEVELOPED
- ☁ APPROXIMATE AREA EXCAVATED AND PLACED IN LANDFILL 1980
- *ACTUAL UNDERDRAIN ALIGNMENT BASED ON 2002
"A" IS APPROXIMATE LOCATION OF HISTORIC OUTFALL
"B" IS CURRENT LOCATION. THE "—" SYMBOL REPRESENTS ALIGNMENT PRESENTED IN 1980 DESIGN DOCUMENTS

1. LOCATION OF TRIBUTARY AND PROPERTY BOUNDARY ARE APPROXIMATE.
2. CLOSED LANDFILL AND SEDIMENT POND ARE PRIMARY FEATURES SINCE 1996. REMAINDER OF THE PROPERTY IS VACANT GRASS, AND WOODED LAND.
3. SEDIMENT POND CONSTRUCTED IN 1995 IS PART OF THE SOILS REMEDIATION. OTHER SURFACE CONTOURS IN THE MAIN PLANT AREA MAY BE DIFFERENT DUE TO 1995 REMEDIAL ACTIVITIES.

REFERENCES:

DRAWING NO. 910708 TITLED "SURVEY, COMBUSTION ENGINEERING SUBDIVISION NO. 1 CECIL TOWNSHIP, WASHINGTON CO." DATED 7/8/91 BY MOUNTS ENGINEERING. SURVEYED BY JONATHAN MOUNTS

PLAN REFERENCED FROM ABB FIGURE 5832-23 G PLATE 3.

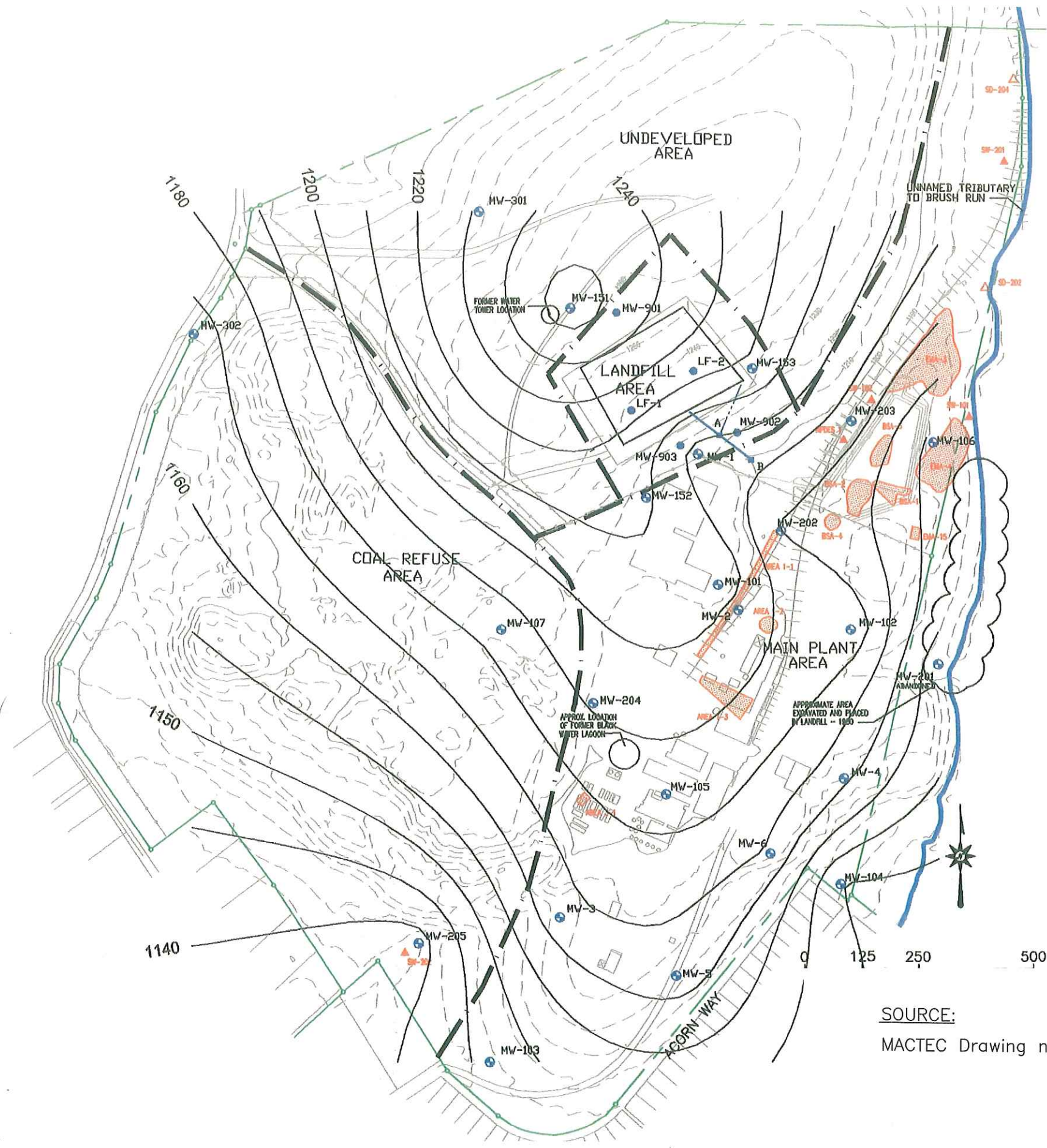
DRAFT

SOURCE:
MACTEC Drawing number B02.DWG, 2/3/2003

Commonwealth of Pennsylvania Department of Environmental Protection
FORMER CE CAST FACILITY Muse, Pennsylvania
FIGURE 4 GROUNDWATER CONTOUR MAP (11-02)
 TETRA TECH FW, INC. Formerly Foster Wheeler Environmental Corporation

P:\Eis\Drawings\CE Cast\FIG 4.dwg, 12/15/2003 03:26:17 PM

P:\Eis\Drawings\CE Cast\FIG 3.dwg, 12/15/2003 03:22:59 PM



LEGEND:

- LF-1 LANDFILL WELLS INSTALLED 1980
- MW-203 MONITORING WELL LOCATION INSTALLED 1990'S
- △ SD-202 SEDIMENT SAMPLE LOCATION (1992-1993)
- ▲ SW-101 SURFACE WATER SAMPLE LOCATION (1992-1993)
- SOIL REMEDIATION AREAS (1995)
- APPROXIMATE SITE BOUNDARY
- ++++ FORMER RAILROAD TRACKS
- ARBITRARY BOUNDARIES BETWEEN FOUR AREAS OF SITE: LANDFILL, MAIN PLANT, COAL REFUSE AND UNDEVELOPED
- ☁ APPROXIMATE AREA EXCAVATED AND PLACED IN LANDFILL 1980
- *ACTUAL UNDERDRAIN ALIGNMENT BASED ON 2002
- "A" IS APPROXIMATE LOCATION OF HISTORIC OUTFALL
- "B" IS CURRENT LOCATION, THE "-----" SYMBOL REPRESENTS ALIGNMENT PRESENTED IN 1980 DESIGN DOCUMENTS

1. LOCATION OF TRIBUTARY AND PROPERTY BOUNDARY ARE APPROXIMATE.
2. CLOSED LANDFILL AND SEDIMENT POND ARE PRIMARY FEATURES SINCE 1996. REMAINDER OF THE PROPERTY IS VACANT GRASS, AND WOODED LAND.
3. SEDIMENT POND CONSTRUCTED IN 1995 IS PART OF THE SOILS REMEDIATION. OTHER SURFACE CONTOURS IN THE MAIN PLANT AREA MAY BE DIFFERENT DUE TO 1995 REMEDIAL ACTIVITIES.

REFERENCES:

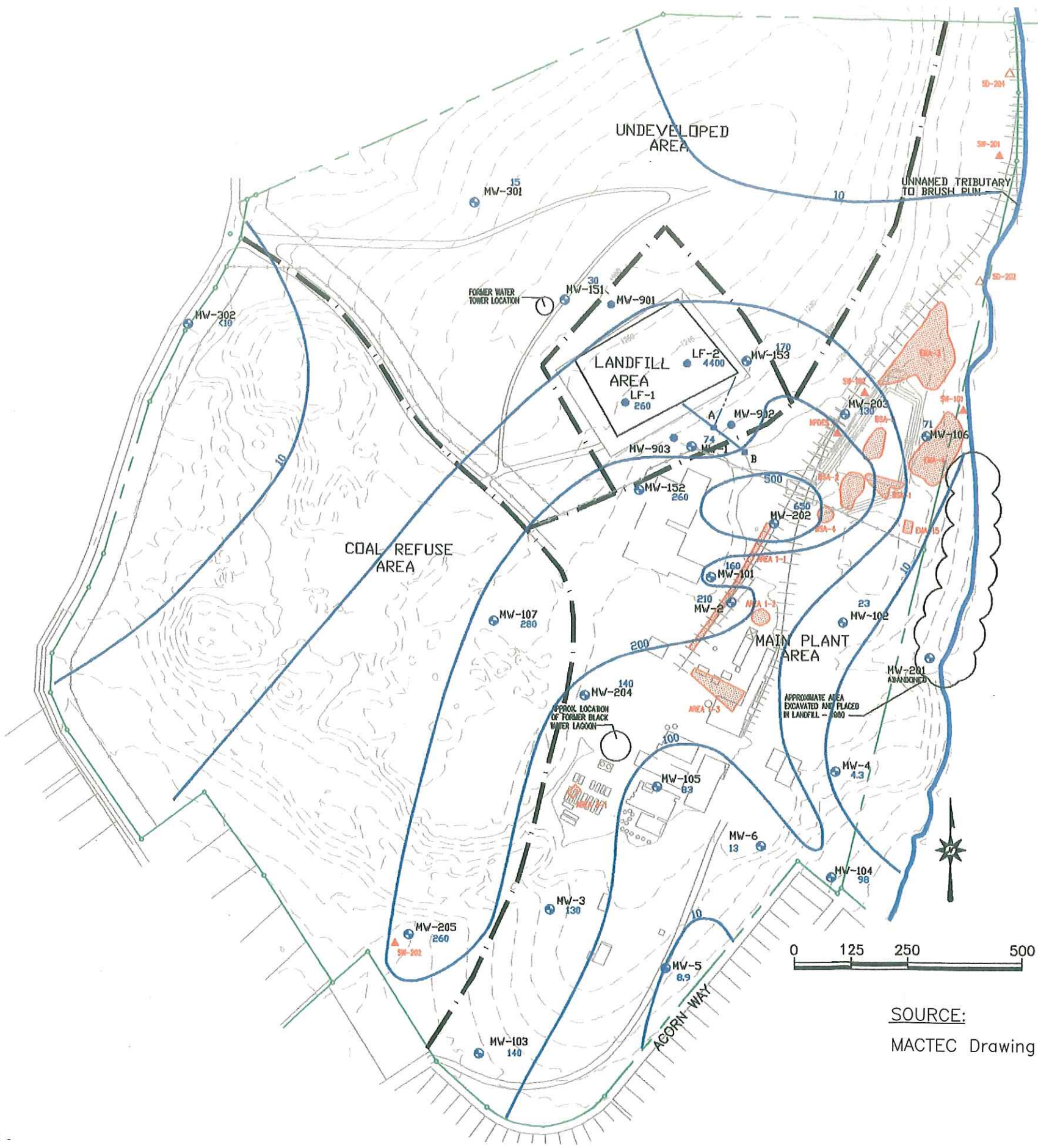
DRAWING NO. 910708 TITLED "SURVEY, COMBUSTION ENGINEERING SUBDIVISION NO. 1 CECIL TOWNSHIP, WASHINGTON CO." DATED 7/8/91 BY MOUNTS ENGINEERING. SURVEYED BY JONATHAN MOUNTS

DRAFT

SOURCE:
MACTEC Drawing number B03.DWG, 2/3/2003

Commonwealth of Pennsylvania Department of Environmental Protection
FORMER CE CAST FACILITY Muse, Pennsylvania
FIGURE 3 BEDROCK CONTOUR MAP
TETRA TECH FW, INC. Formerly Foster Wheeler Environmental Corporation

P:\Eis\Drawings\CE Cast\FIG 5.dwg, 12/15/2003 03:32:43 PM



LEGEND:

- LF-1 LANDFILL WELLS INSTALLED 1980
- MW-203 MONITORING WELL LOCATION INSTALLED 1990'S
- △ SD-202 SEDIMENT SAMPLE LOCATION (1992-1993)
- ▲ SW-101 SURFACE WATER SAMPLE LOCATION (1992-1993)
- SOIL REMEDIATION AREAS (1995)
- APPROXIMATE SITE BOUNDARY
- ||||| FORMER RAILROAD TRACKS
- ARBITRARY BOUNDARIES BETWEEN FOUR AREAS OF SITE: LANDFILL, MAIN PLANT, COAL REFUSE AND UNDEVELOPED
- ☁ APPROXIMATE AREA EXCAVATED AND PLACED IN LANDFILL 1980
- * ACTUAL UNDERDRAIN ALIGNMENT BASED ON 2002
- A IS APPROXIMATE LOCATION OF HISTORIC OUTFALL
- B IS CURRENT LOCATION. THE " - - - - " SYMBOL REPRESENTS ALIGNMENT PRESENTED IN 1980 DESIGN DOCUMENTS
- 73 1,4 DIOXANE CONTOURS (UG/L)
- 73 1,4 DIOXANE CONCENTRATIONS AT EACH WELL MAY, 2002 (UG/L)

1. LOCATION OF TRIBUTARY AND PROPERTY BOUNDARY ARE APPROXIMATE.
2. CLOSED LANDFILL AND SEDIMENT POND ARE PRIMARY FEATURES SINCE 1996. REMAINDER OF THE PROPERTY IS VACANT GRASS, AND WOODED LAND.
3. SEDIMENT POND CONSTRUCTED IN 1995 IS PART OF THE SOILS REMEDIATION. OTHER SURFACE CONTOURS IN THE MAIN PLANT AREA MAY BE DIFFERENT DUE TO 1995 REMEDIAL ACTIVITIES.

REFERENCES:

DRAWING NO. 910708 TITLED "SURVEY, COMBUSTION ENGINEERING SUBDIVISION NO. 1 CECIL TOWNSHIP, WASHINGTON CO." DATED 7/8/91 BY MOUNTS ENGINEERING. SURVEYED BY JONATHAN MOUNTS

PLAN REFERENCED FROM ABB FIGURE 5832-23 G PLATE 3

SOURCE:

MACTEC Drawing number B05.DWG, 2/3/2003

Commonwealth of Pennsylvania Department of Environmental Protection
FORMER CE CAST FACILITY Muse, Pennsylvania
FIGURE 5 1,4 DIOXANE CONCENTRATIONS (NOV. 2002)
TETRA TECH FW, INC. Formerly Foster Wheeler Environmental Corporation

LEGEND:

- LF-1 LANDFILL WELLS INSTALLED 1980
- ⊙ MW-203 MONITORING WELL LOCATION INSTALLED 1990'S
- △ SD-202 SEDIMENT SAMPLE LOCATION (1992-1993)
- ▲ SW-101 SURFACE WATER SAMPLE LOCATION (1992-1993)
- ⊞ SOIL REMEDIATION AREAS (1995)
- APPROXIMATE SITE BOUNDARY
- ++++ FORMER RAILROAD TRACKS
- ARBITRARY BOUNDARIES BETWEEN FOUR AREAS OF SITE: LANDFILL, MAIN PLANT, COAL REFUSE AND UNDEVELOPED
- ☁ APPROXIMATE AREA EXCAVATED AND PLACED IN LANDFILL 1980
- * ACTUAL UNDERDRAIN ALIGNMENT BASED ON 2002
 A IS APPROXIMATE LOCATION OF HISTORIC OUTFALL
 B IS CURRENT LOCATION. THE "----" SYMBOL REPRESENTS ALIGNMENT PRESENTED IN 1980 DESIGN DOCUMENTS
- COMBINED PCE & TCE CONTOUR LINE
- 4.8 PCE CONCENTRATION, UG/L (NOVEMBER, 2002)
- 14 PCE CONCENTRATION, UG/L (NOVEMBER, 2002)

1. LOCATION OF TRIBUTARY AND PROPERTY BOUNDARY ARE APPROXIMATE.
2. CLOSED LANDFILL AND SEDIMENT POND ARE PRIMARY FEATURES SINCE 1996. REMAINDER OF THE PROPERTY IS VACANT GRASS, AND WOODED LAND.
3. SEDIMENT POND CONSTRUCTED IN 1995 IS PART OF THE SOILS REMEDIATION. OTHER SURFACE CONTOURS IN THE MAIN PLANT AREA MAY BE DIFFERENT DUE TO 1995 REMEDIAL ACTIVITIES.

REFERENCES:

DRAWING NO. 910708 TITLED "SURVEY, COMBUSTION ENGINEERING SUBDIVISION NO. 1 CECIL TOWNSHIP, WASHINGTON CO." DATED 7/8/91 BY MOUNTS ENGINEERING. SURVEYED BY JONATHAN MOUNTS

PLAN REFERENCED FROM ABB FIGURE 5832-23 G PLATE 3.

DRAFT

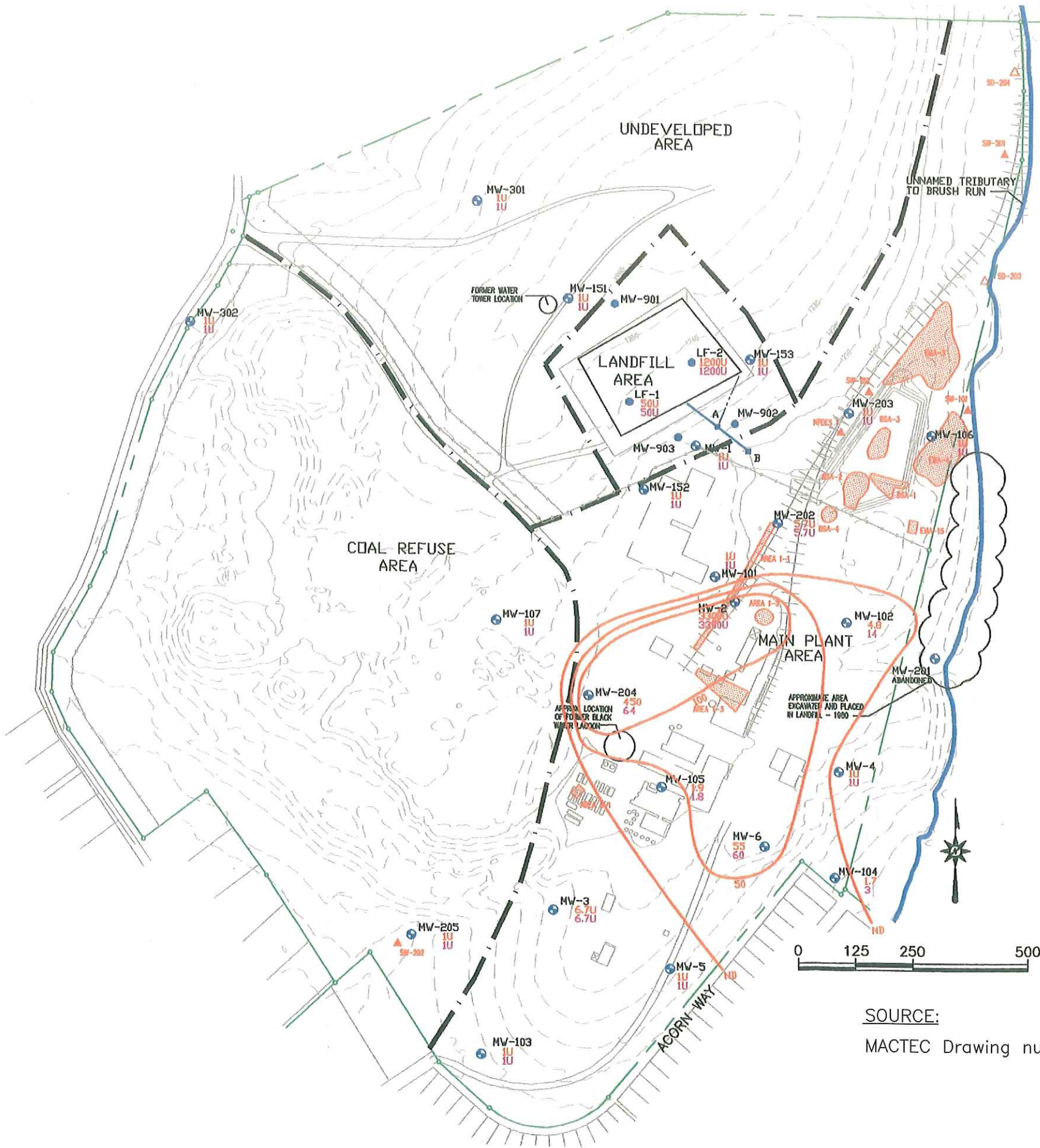
Commonwealth of Pennsylvania
 Department of Environmental Protection
FORMER CE CAST FACILITY
 Muse, Pennsylvania

FIGURE 6
 PCE & TCE CONCENTRATIONS (NOV. 2002)

TETRA TECH FW, INC.
 Formerly Foster Wheeler Environmental Corporation

SOURCE:

MACTEC Drawing number B06.DWG, 2/3/2003



APPENDIX C
INVENTORY OF DOCUMENTATION
FORMER CE-CAST FACILITY
MUSE, PA 15350

1. **February 13, 2003** Letter from PADEP to Combustion Engineering/CE Cast Muse regarding RCRA Corrective Action at the facility – PADEP (Pittsburgh) files.
2. **March 1995** Phase III – Site Characterization Report , Former C-E Cast Facility, Muse, Pennsylvania – PADEP files.
3. **April 1996** Phase IV Soil Remediation Report, Former C-E Cast Facility, Muse, Pennsylvania – PADEP files.
4. **July 18, 1980** Notification of Hazardous Waste Activity – USEPA files.
5. **July 18, 1980** Part A USEPA General Information Packet for Consolidated Permits Program – USEPA files.
6. **June 18, 1981** Letter from C-E Cast to USEPA regarding landfill closure – USEPA files.
7. **October 24, 1973** Letter from PADER to C-E Cast regarding problems that needed to be remediated – PADEP files.
8. **May 12, 1980** Consent Order and Agreement from PADER to C-E Cast – USEPA files.
9. **March 1994** C-E Cast Facility, Muse, Pennsylvania, Report of Filed Investigation – Mactec files.
10. **February 4, 2003** November 2002 Groundwater Monitoring Results CE Cast-Muse, Pa – Mactec files.
11. **February 21, 1990** Registration of Storage Tanks – PADEP files.
12. **February 7, 1991** Tank Closure Report Form – PADEP files.
13. **April 8, 1991** Registration of Storage Tanks – PADEP files.
14. **February 21, 1991** Spill Prevention Response Plan for Combustion Engineering, Inc. – PADEP files.
15. **September 21, 1993** Letter from PADEP to Combustion Engineering regarding the closure of Outfalls 001 and 002– PADEP files..

16. **October 7, 1993** Letter from C-E Cast to PADEP regarding the closure of Outfalls 001 and 002– PADEP files..
17. **November 26, 2002** Letter from PADEP to residents on Cherry Way informing them of sampling of their drinking water – PADEP files.

REFERENCES