



pennsylvania

DEPARTMENT OF ENVIRONMENTAL PROTECTION



Active and Abandoned Mine Operations

New Hope Crushed Stone

Reclamation & Restoration Vantage Photos

Solebury Communications Group

May 2016

Tom Wolf, Governor

Patrick McDonnell, Acting Secretary

May 2016 Project Status

| | |
|------------------------------------|--|
| STATUS AS OF: | May 31, 2016 |
| PROJECT | New Hope Crushed Stone (NHCS) Quarry Reclamation and Stream Restoration |
| START DATE | Reclamation: January 29, 2016 Stream Restoration: January 29, 2016 |
| ANTICIPATED COMPLETION DATE | Reclamation: March 2019 Stream Restoration: March 2019 |
| CURRENT STATUS | Quarry Reclamation On Schedule Stream Restoration On Schedule |

May 2016 Highlights

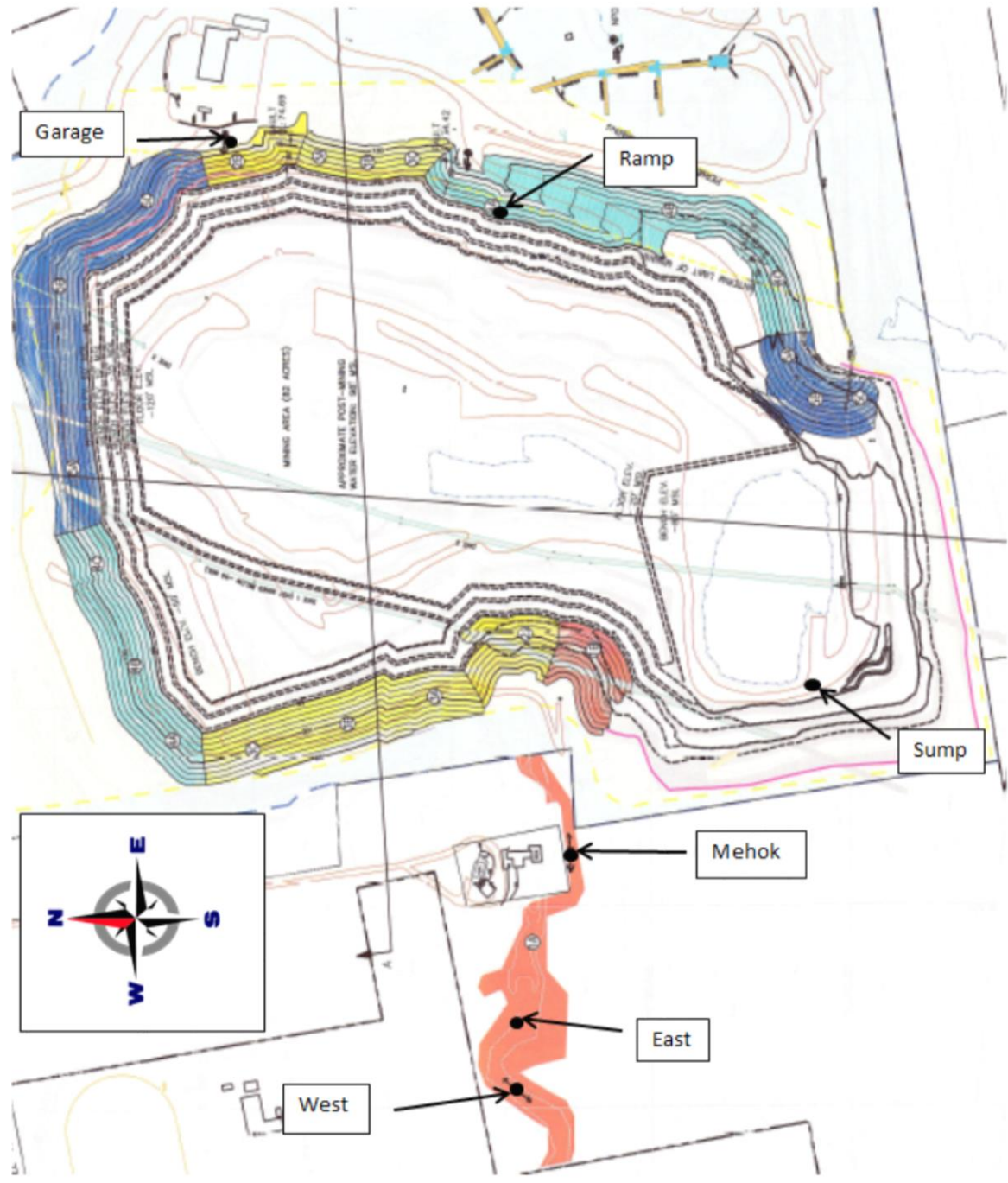
- Established 'New Hope Crushed Stone' web page
 - Began uploading all relevant documents back to 2014 EHB decision
- Continued settlement negotiations
- Established weekly and monthly reporting metrics

Establishing Photo Vantage Points

Photos will be taken from these geographic locations during each inspection. Progress summaries will be included with each monthly update.

Please refer to the map on the next slide.

- West looking east, west
- East looking east, west
- Mehok looking east, west
- Sump
- Ramp looking south, west
- Garage looking north, south



West, Looking East - Restoration



5/12/16

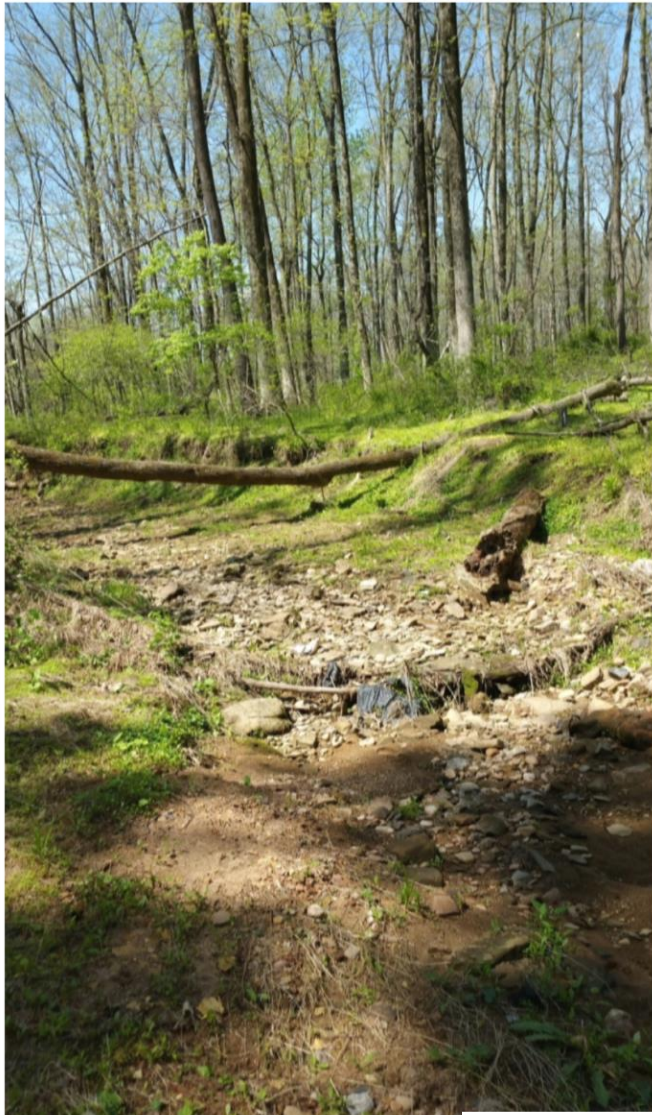
Pictured

- Current condition of the stream bed
- During normal flows, water accumulates to the left (steep slope)

Envisioned

- Banks will be restored and revegetated
- Stream channel will slope gradually toward the quarry
- Steep slopes will be softened
- Brush cleared
- Water will evenly flow through this channel

West, Looking West - Restoration



5/12/16

Pictured

- Current condition of the stream bed
- Looking towards Solebury School
- Water samples collected near downed tree

Envisioned

- Water flowing this channel
- Banks will be restored and revegetated

East, Looking East - Restoration



5/12/16

Pictured

- Current condition of the stream bed
- Upstream of the swallow hole
- Stream turns to the left

Envisioned

- Banks will be restored and revegetated
- Sediment, brush and trees removed and cleared
- Steep slopes softened
- Water flowing this channel

East, Looking West - Restoration



5/12/16

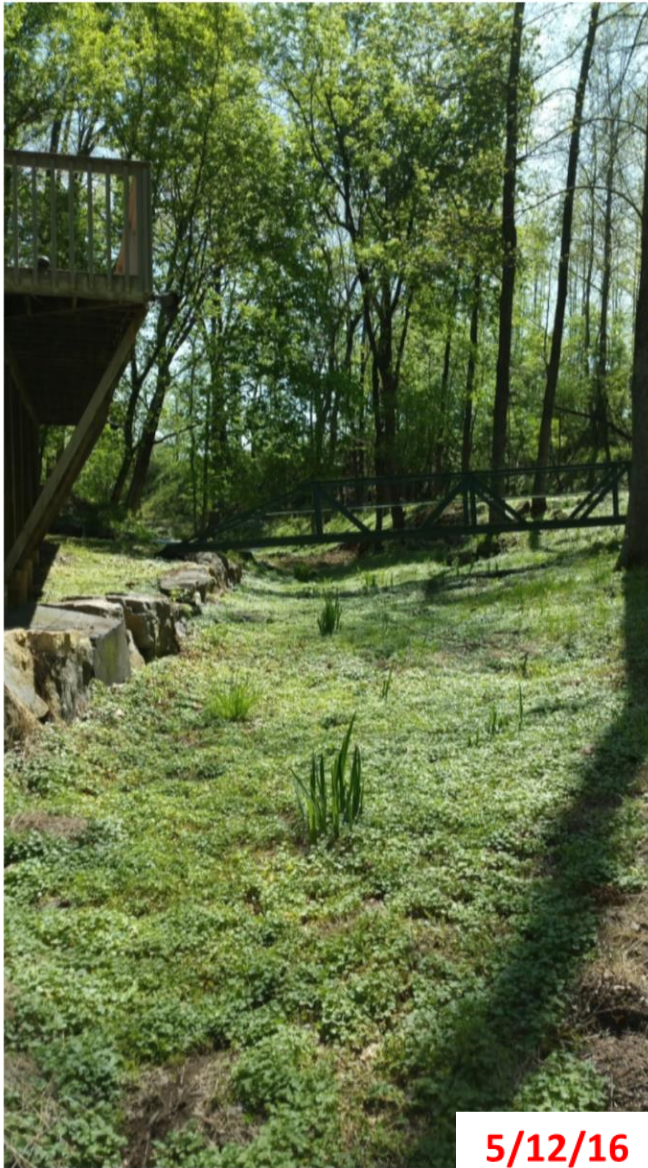
Pictured

- Current condition of the stream bed
- Looking upstream towards “west” location points.

Envisioned

- Banks will be restored and revegetated
- Trees and sediment cleared
- Water flowing down the center

Mehok, Looking East - Restoration



Pictured

- Owner's property
- Looking directly at the quarry
- This is part of the stream channel
- Only in heavy flows does water use this channel

Envisioned

- This channel will be deepened to get the correct pitch towards the quarry
- Water will flow through this channel

Mehok, Looking West - Restoration



5/12/16

Pictured

- Current status of the stream bed
- Looking towards swallow area where sinkholes were fixed through emergency permit approved by DEP
- Access road, shown in gravel
- One of the main areas work will be completed

Envisioned

- Water will eventually be flowing here
- This area will be cut and filled
- The access road will be removed
- Downed trees and brush will be removed

Sump - Reclamation

Pictured

- Sump pump floating in back right corner
- Pond is filled by water coming from the wall
- Water level dependent on rain



Envisioned

- Will not be able to access this point in the future as this will be under water.

Ramp, Looking South - Reclamation

Pictured

- Same pond from different angle
- “West” and “South” walls
- West high wall is grandfathered and will not be reclaimed



Envisioned

- More water
- No pit floor haul roads

Ramp, Looking West - Reclamation

Pictured

- This is inside the quarry, looking at the 'Western Wall'
- The brown area to the left has already been sloped.



Envisioned

- Permanent inlet installed for Primrose Creek
- Water level will continue to rise
- Continued sloping of walls

➤ Garage, Looking North - Reclamation

Pictured

- Inside the Quarry, looking at the NW corner.
- This area has been used as a staging area for fill to be used for reclamation and restoration.



Envisioned

- Continued sloping
- More trees
- Water will be visible from this vantage point
- Foreground-sloped into water at 45 degree angle

Garage, Looking South - Reclamation

Pictured

- Overview of quarry, looking SW.
- Water on pit floor, sump is almost full



5/12/16

Envisioned

- Continued sloping
- More greenery
- Significant water increase over time
- Several benches will be pushed back



pennsylvania

DEPARTMENT OF ENVIRONMENTAL PROTECTION



Active and Abandoned Mine Operations

For More Information

Monthly Updates, Inspection Reports,
Communications and more, posted as available.

Please visit: www.dep.pa.gov

Regional Resources > Southeast Region > Community Information

Tom Wolf, Governor

Patrick McDonnell, Acting Secretary