



pennsylvania
DEPARTMENT OF ENVIRONMENTAL PROTECTION



Active and Abandoned Mine Operations

New Hope Crushed Stone

Monthly Update

Solebury Communications Group

February and March 2017

Tom Wolf, Governor

Patrick McDonnell, Acting Secretary

February and March 2017 Project Status

STATUS AS OF:	April 7, 2017	
PROJECT	New Hope Crushed Stone (NHCS) Quarry Reclamation and Stream Restoration	
START DATE	Reclamation: January 29, 2016 Stream Restoration: January 29, 2016	
ANTICIPATED COMPLETION DATE	Reclamation: March 2019 Stream Restoration: March 2019	
CURRENT STATUS	Quarry Reclamation	Behind
	Stream Restoration	On Schedule

Key Ongoing Factors

- Provisions of the January 29, 2016, letter from DEP to NHCS continue to be in effect.
- Reclamation and stream restoration are required to be completed by March 2019; reclamation is currently behind schedule. A Corrective Action Plan is in place, but is under review by DEP for improvement.
- NHCS has appealed the January 29 letter to the EHB. A hearing was held on March 20, 2017.
 - DEP and Intervenor post-hearing briefs are due by or before May 10.
 - NHCS post-hearing brief is due by or before June 10.
 - DEP and Intervenor reply briefs are due by or before June 27.
- The Compliance Order requires NHCS to report on progress by the 5th of each month that includes quantifiable data which is tracked in this monthly status report.
- The last NHCS related sinkhole was repaired the 4th quarter of 2015.

February and March 2017 Highlights

- Settlement Negotiations.
 - Talks between DEP and NHCS have continued.
- Inspections were done on February 3 and 16 and March 7 and 16.
 - Statutorily required inspection frequency is once per quarter.
 - In February, reclamation work was done in the northeast and northwest corners. On the west side material was pushed into the pit.
 - Overnight between February 28 and March 1 a slide of reclamation material occurred on the east side of the pit from the second to third levels estimated at 500 to 800 tons.
 - NHCS reported this event to the Mine Health and Safety Administration (MSHA) Wyoming Field Office who notified DEP. MSHA issued 5 citations.
 - DEP inspections regarding this event were held on March 7 and 16. Discussions were held with NHCS officials and MSHA staff on necessary actions.
 - NHCS completed actions in accord with MSHA citations and DEP comments.
 - On March 23 a sinkhole was reported on the Busik property across from the school. Repair work is expected to begin in mid April (see pictures).

February and March 2017 Highlights - Continued

- Inspections - Continued
 - 500,000 GPD pumping continues.
 - Pit water level is estimated at about -80 MSL, two feet higher than reported in January.
- Reclamation and Stream Restoration Progress
 - On October 21, 2016, DEP sent NHCS a letter regarding the Corrective Action Plan for reclamation volume deficiencies.
 - The maximum timeframe needs to be three sequential quarters.
 - A response received from NHCS and has been under review. While a resolution was expected by the end of December, CAP issues are not resolved.
 - NHCS submitted a request to DEP on March 13 for temporary relief from reclamation and restoration to respond to the slide and MSHA requirements.
 - DEP replied on April 5 requiring a description and timetable for the MSHA related work in accord with expectation outlined during the March 16 inspection and meeting.
 - Given the expected process for the slide remediation, DEP believes the request could be negated.
 - Requirement so the DEP January 29, 2016, letter remain in effect.
 - During February there was a higher incidence of sick days and staffing is down 3 employees as of the start of March.

February and March 2017 Highlights - Continued

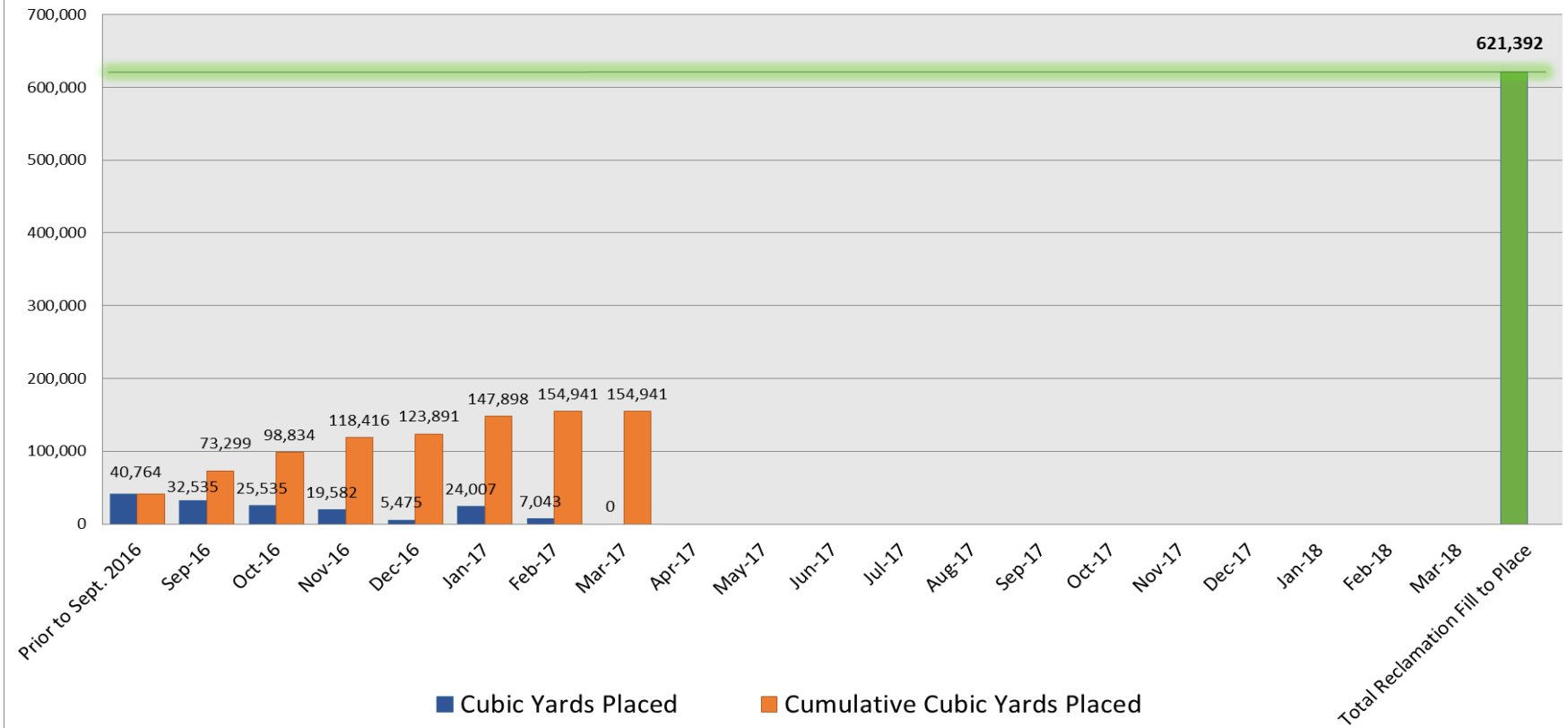
- Reclamation and Stream Restoration Progress - Continued
 - Work Days
 - February: 8 on reclamation; 0 on stream; 4 lost to inclement weather and conditions; 8 days on east wall ramp.
 - March: 0 on reclamation; 0 on stream; 11 lost to inclement weather and conditions; 1 day on south pit pump modification; 17 days redirected towards MSHA remediation plan work.
 - Reclamation work has resumed as of the beginning April.
 - 186 truck trips were made in February with 7,043 cubic yards of overburden being trucked; total placed to date is 154,921 cubic yards.
 - As of the end of March, 24.9% of the total reclamation material has been moved.
 - Truck trip efficiency decreased to 37.9 cubic yards per load from 42.8 cubic yards per load in December and January.
 - Corrective Action Plan catchup material moved for February was 4,157 cubic yards of the total moved.
 - Stream work was not done due to weather conditions and work days shifted to addressing the slide event and MSHA requirements.

Monthly Progress Data

Month	Cubic Yards Placed Overburden	Corrective Action Plan, Portion of Catchup Cubic Yards Placed	Cubic Yards Placed Overburden, Cumulative	Truck Loads	Reclamation Work Days	Stream Restoration Work Days	Inclement Weather Work Days Lost
Prior to Sept. 2016	40,764		40,764	237			
Sep-16	32,535		73,299	940			
Oct-16	25,535	4,535	98,834	531	15.0	6.0	0.0
Nov-16	19,582	12,582	118,416	367	5.0	13.0	2.0
Dec-16	5,475	1,975	123,891	128	2.5	0.0	15.5
Jan-17	24,007	1,607	147,898	588	16.0	0.0	1.0
Feb-17	7,043	4,157	154,941	186	8.0	0.0	4.0
Mar-17	0	0	154,941	0	0.0	0.0	11.0
Apr-17							
May-17							
Jun-17							
Jul-17							
Aug-17							
Sep-17							
Oct-17							
Nov-17							
Dec-17							
Jan-18							
Feb-18							
Mar-18							
Total Reclamation Fill to Place	621,392						
Percentage of total placed to date	24.9%						

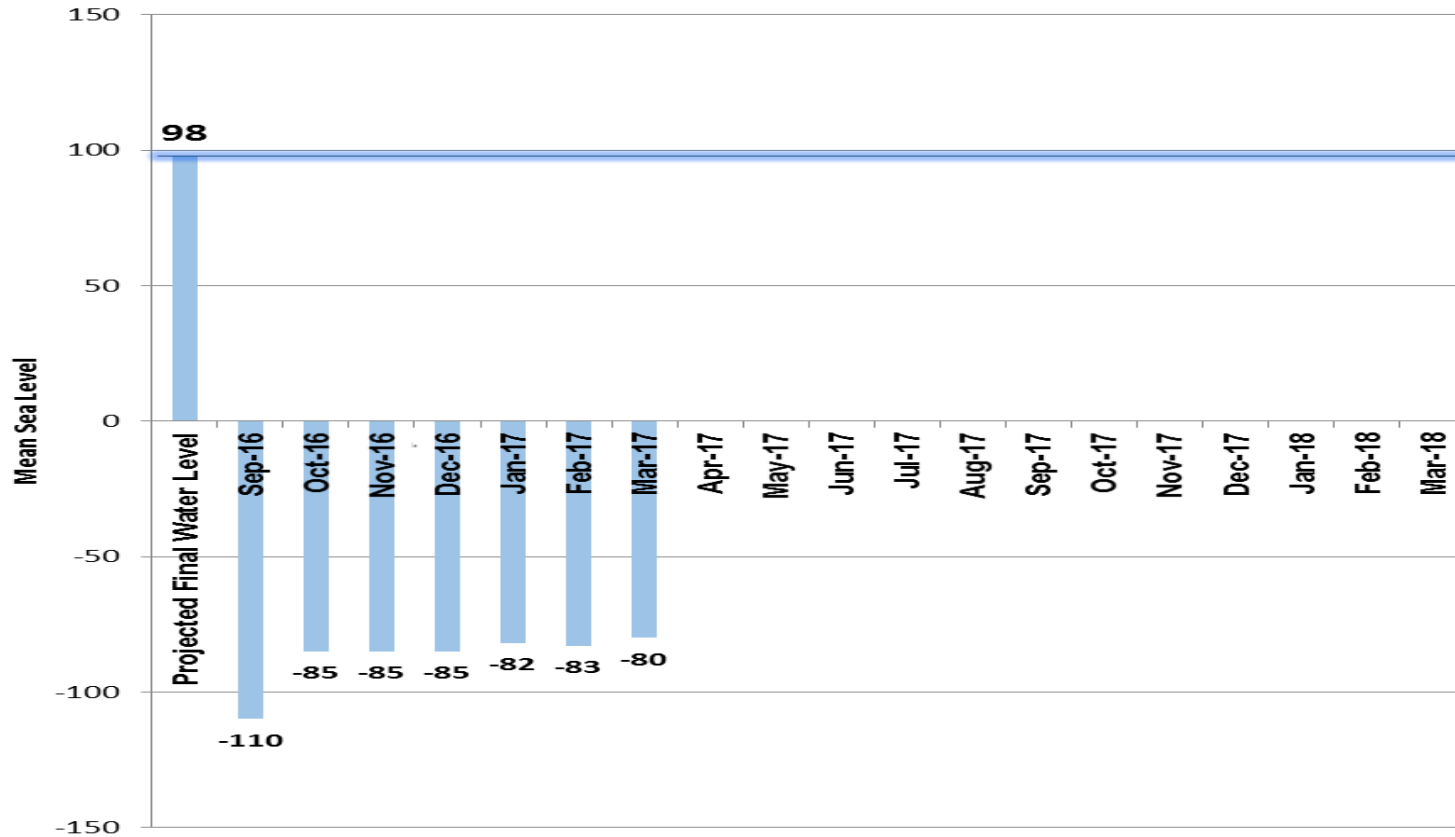
Reclamation Fill Progress

Reclamation Fill Tracking



Monthly Water Level Tracking

Water Level Status



NHCS Bench Levels

- Bench 2 60" MSL
- Bench 3 10' MSL
- Bench 4 -35 MSL
- Bench 5 -85 MSL
- Bench 6 -120 MSL



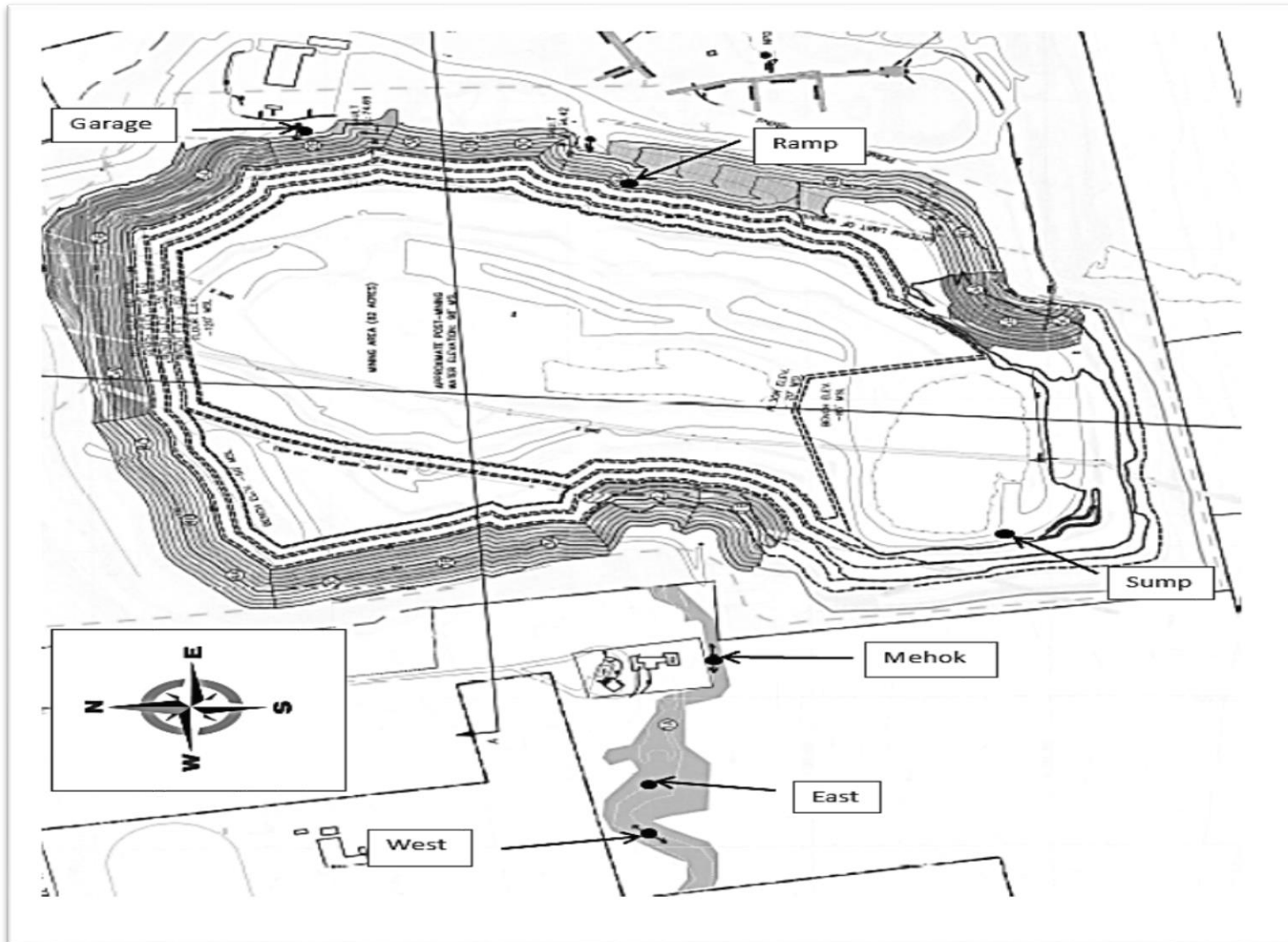
Establishing Photo Vantage Points

Photos will be taken from these geographic locations during each inspection. Progress summaries will be included with each monthly update.

Please refer to the map on the next slide.

- West looking east, west
- East looking east, west
- Mehok looking east, west
- Sump
- Ramp looking south, west
- Garage looking north, south

Photo Vantage Points



Stream Restoration

- Stream restoration work did not occur during February or March.
- Pictures will be posted once work resumes.

Sump - Reclamation



Sump area water level is up about 3 feet from January.



Ramp, Looking South - Reclamation



Water level continues to rise.



Ramp, Looking West - Reclamation



Minimal reclamation work completed.



➤ Garage, Looking North - Reclamation



Some reclamation work continued in the northwest corner.



Aerial View - Reclamation



View from December 2, 2016. Staging of material can be seen to the left of the sump area at the top of the quarry. This view is before the water rose to combine the sump area and the quarry floor.

New Sinkhole



This sinkhole was reported on March 23 on the Busik property across from the school. The area has been staked off. Work to make the repair is expected to begin by mid April.



pennsylvania

DEPARTMENT OF ENVIRONMENTAL PROTECTION



Active and Abandoned Mine Operations

For More Information

Monthly Updates, Inspection Reports,
Communications and more, posted as available.

Please visit: www.dep.pa.gov

Regional Resources > Southeast Region > Community Information

Tom Wolf, Governor

Patrick McDonnell, Acting Secretary