



INSTRUCTIONS FOR DETERMINING PUBLIC WATER SUPPLY SOURCE LOCATIONS USING EMAPPA

These instructions are meant to aid users of the eMapPa to determine public water supply source locations. It is meant to be used in conjunction with the DEP's *Trenchless Technology Technical Guidance Document* (310-2100-003).

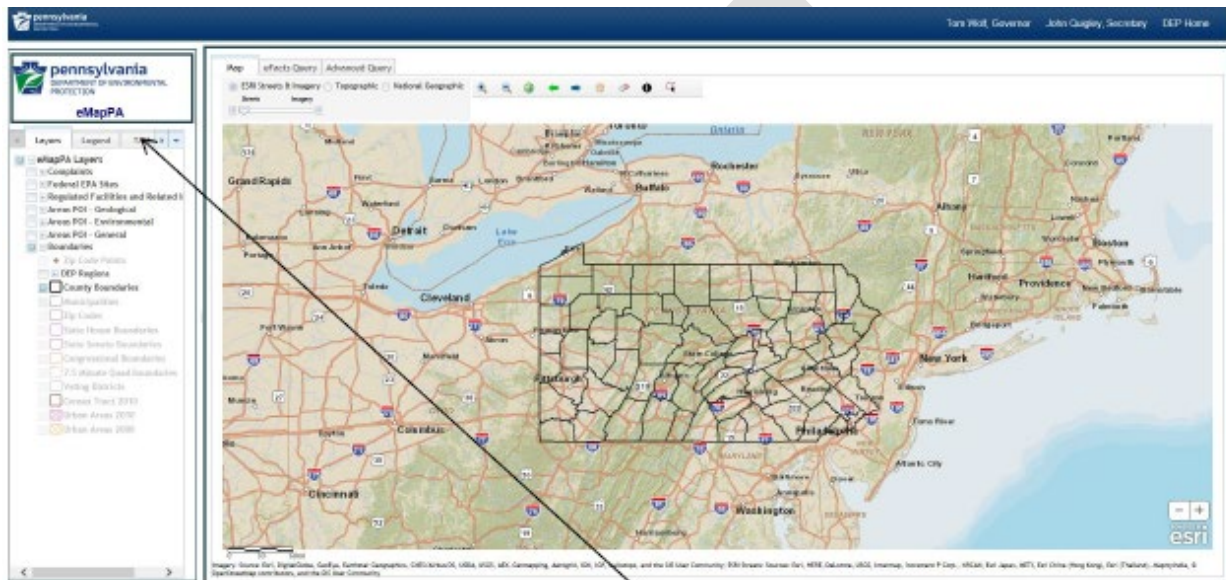
For more information, please visit the Bureau of Waterways Engineering & Wetlands <https://www.dep.pa.gov/Business/Water/Waterways/Pages/default.aspx> or visit the Trenchless Technologies webpage at <https://www.dep.pa.gov/About/Regional/PCO/Pages/Trenchless.aspx>.

DRAFT

Instructions for Determining Public Water Supply Source Locations Using eMapPA

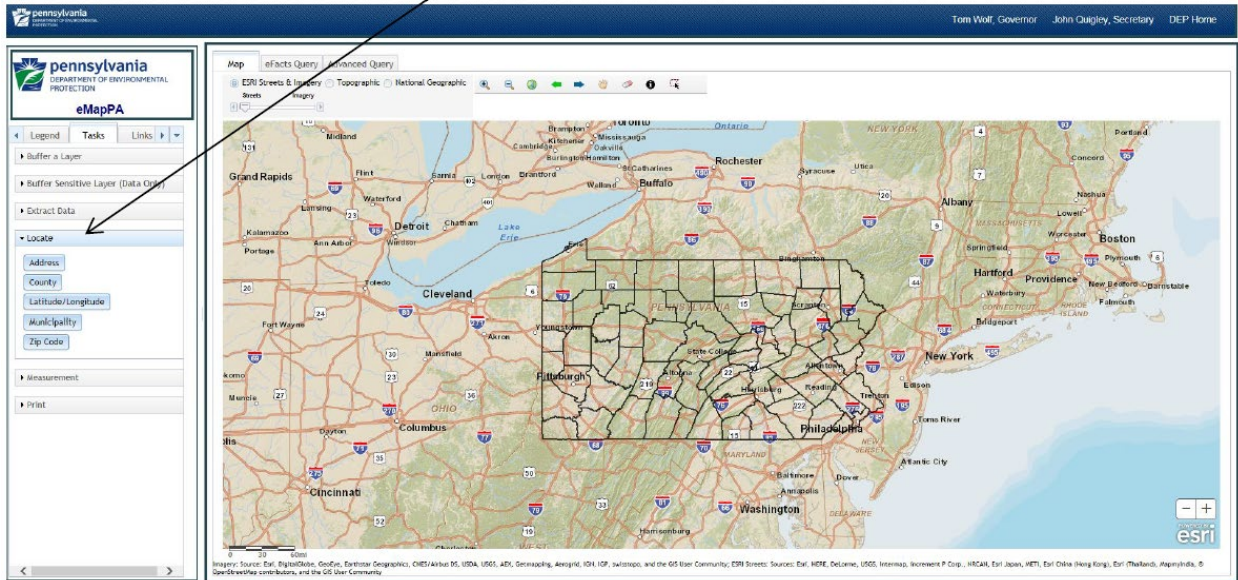
Note: The locations of public water supply sources are considered sensitive information, so they cannot be determined using the following process. This process would, however, enable the user to obtain a listing of public water supply sources within a specified buffer of a point of interest. This listing can then be used to conduct a file review in the local DEP Office if more specific data is required.

1. Enter <https://gis.dep.pa.gov/emappa/> in your browser's address bar.
2. The following webpage should appear in your browser window:



3. Begin by defining your point of interest. Select the "Tasks" tab under the table of contents.

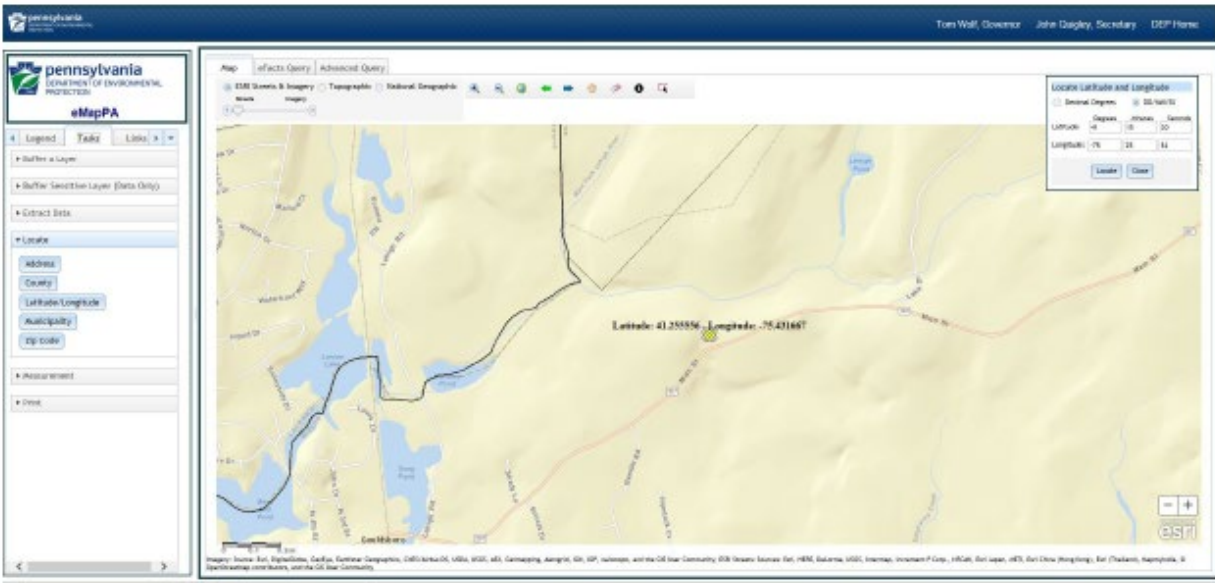
4. Under the “Tasks” tab choose “locate” as shown below.



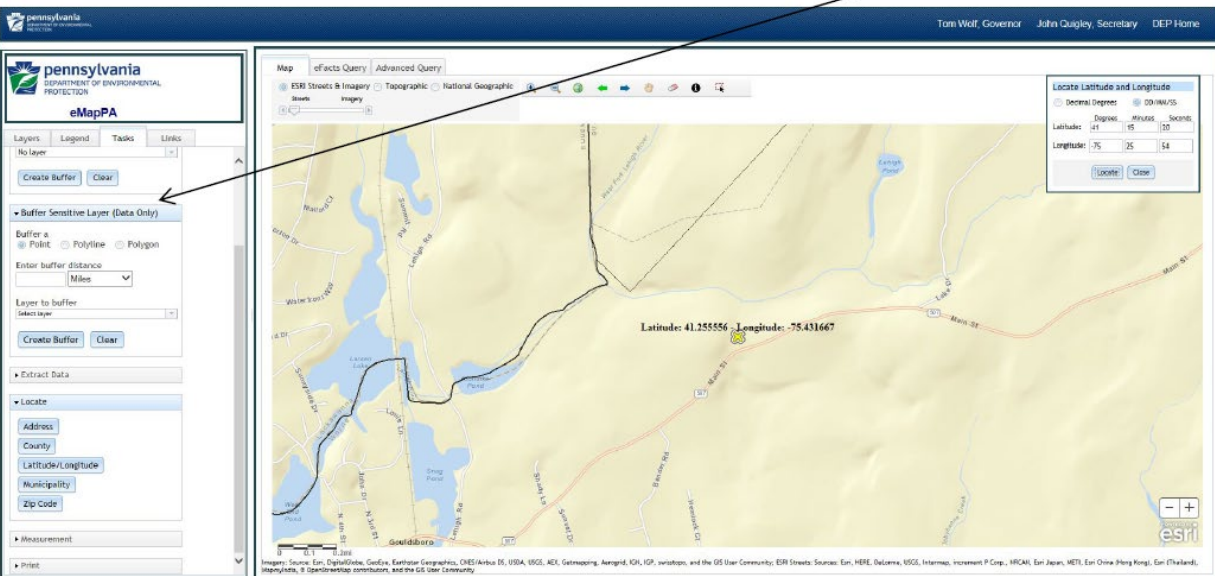
5. Now click on the appropriate locational method based on the location information that you have. In this example, the Latitude and Longitude were used, so the Locate Latitude and Longitude dialog box appears on the right-hand side of the screen. Enter your coordinates, being sure to use a negative (-) Longitude to indicate “west”.



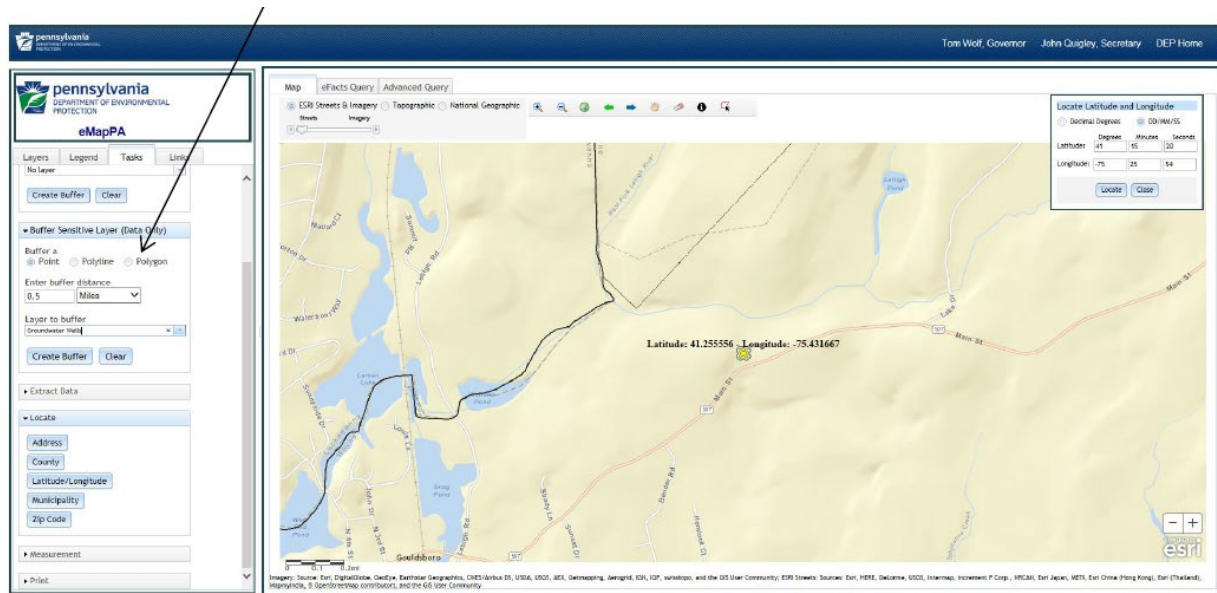
- After Clicking locate in the dialog box, the map will zoom-in to your point of interest, which will be labeled as shown below.



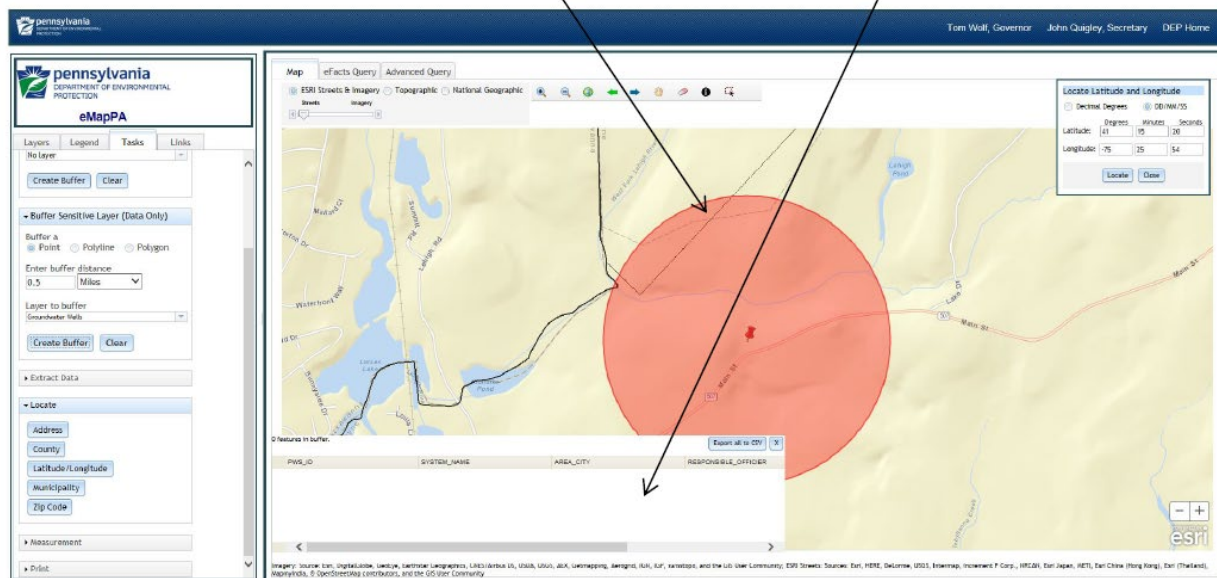
- Under the "Tasks" tab you should now choose "Buffer Sensitive Layer (Data Only)".



- Choose “Point”, enter a buffer distance, in this example 0.5 miles is the area of interest and then choose the layer of interest, in this example, public water system groundwater sources are of concern, so Groundwater Wells was chosen.



- Now select “Create Buffer” and then click on the point on the map that you had previously identified in step 6 above. A red circle delineating the buffer zone will appear and a dialog box showing any features from the targeted layer will also appear.



In this example there were no public water system groundwater sources within a ½ mile buffer zone of the point selected, so the dialog box is empty. If any public water system sources were found within the buffer zone, they would be listed within this dialog box. As was stated above, this information is considered sensitive, so the exact locations of the wells will not be provided. If this information is needed, the listing of sources can be used to schedule a file review with the appropriate DEP office.