

# Benner Twp PFAS Investigation Area

Updated: February 27, 2023



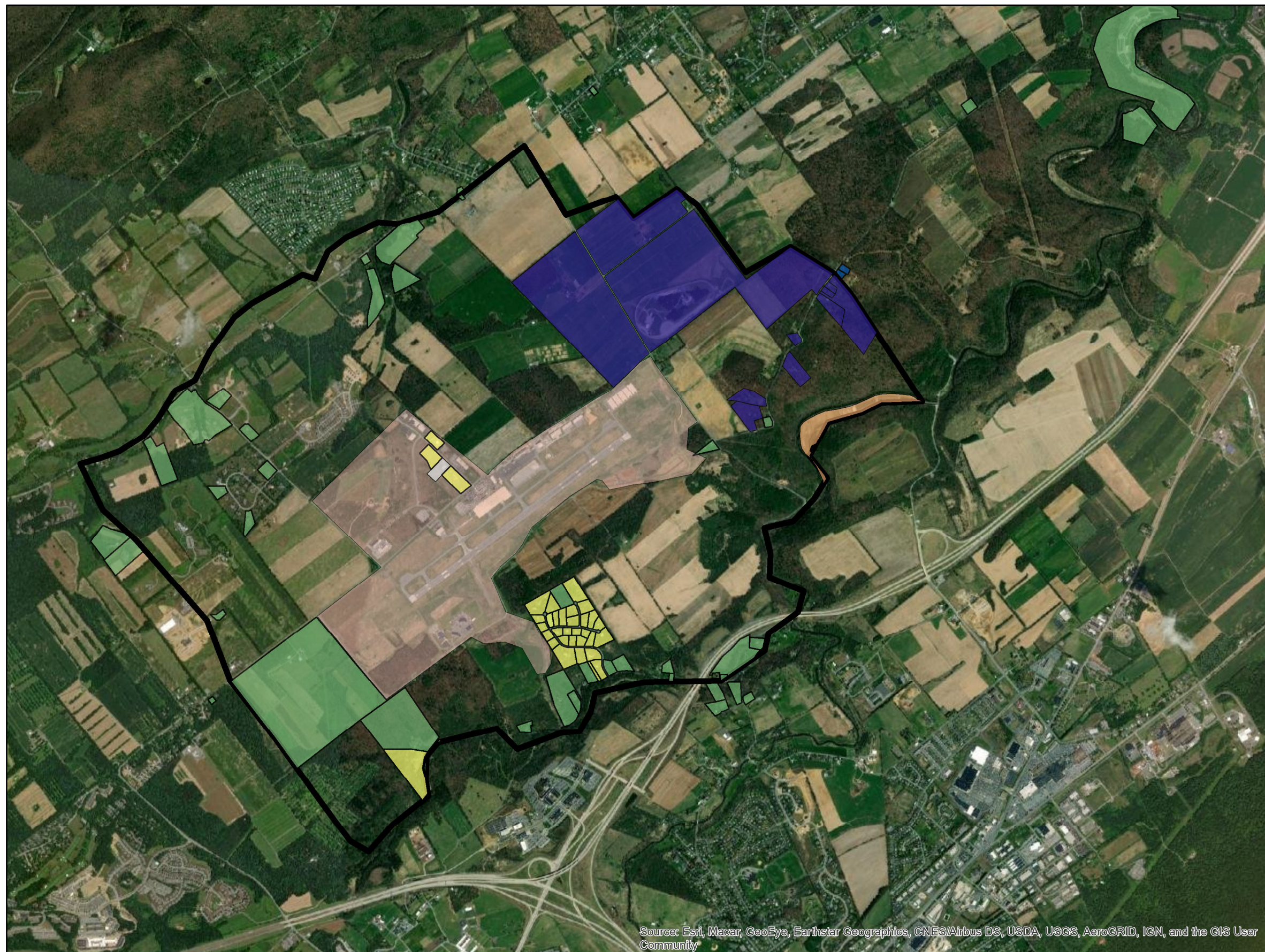
## Legend

- Above MCLs - Non-potable
- Above MCLs - Transitioned to munic. water supply
- Above MCLs - Using alt. drinking water supply
- Below MCLs
- Third Party Sample - Below MCLs
- Investigation Area
- Potential Source Investigation Area

\* The Bureau of Safe Drinking Water's Maximum Contaminant Level (MCL) for PFOA is 14 parts per trillion (ppt) and 18 ppt for PFOS. These values are adopted as PA's groundwater cleanup standard (MSCs).

**The Investigation Area is primarily bounded in the north by Buffalo Run Road, in the west by Bernal Road, in the south by Big Hollow Road, and in the east by Rock Road/Barns Lane.**

**The Potential Source Investigation Area is centered around the University Park Airport and various industry located to the north along High Tech Road.**



Source: Esri, Maxar, GeoEye, Earthstar Geographics, CNES/Airbus DS, USDA, USGS, AeroGRID, IGN, and the GIS User Community

