

Benner Twp PFAS Investigation Area

Last Updated: January 30, 2024



Legend

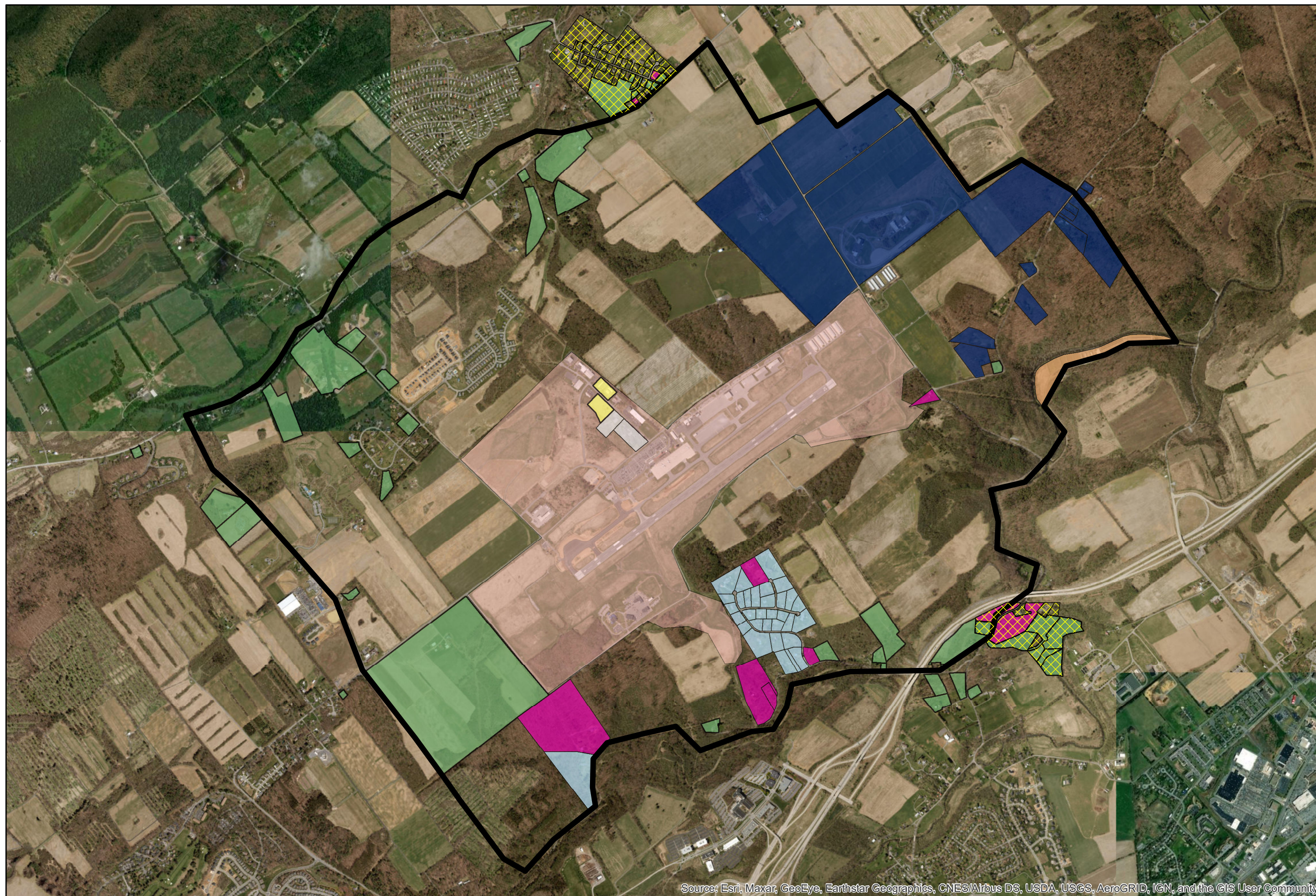
- Additional Sampling Areas
- Above PA MCLs
- Above MCLs - POET System installed on well
- Above PA MCLs - Transitioned to munic. water supply
- Above PA MCLs - Using alt. drinking water supply
- Above proposed EPA MCLs, below PA MCLs
- Below proposed EPA MCLs
- Third Party Sample - Below proposed EPA MCLs
- Potential Source Investigation Area

* The Bureau of Safe Drinking Water's Maximum Contaminant Level (MCL) for PFOA is 14 parts per trillion (ppt) and 18 ppt for PFOS. These values are adopted as PA's groundwater cleanup standards (MSCs).

** On March 14, 2023, EPA announced proposed MCLs of 4 ppt for PFOS and PFOA. Additionally, EPA announced a Hazard Index based MCL of 1.0 (unitless) for PFNA, PFHxS, PFBS, and HFPO-DA.

The Investigation Area is primarily bounded in the north by Buffalo Run Road, in the west by Bernal Road, in the south by Big Hollow Road, and in the east by Rock Road/Barns Lane.

The Potential Source Investigation Area is centered around the University Park Airport and various industry located to the north along High Tech Road.



Source: Esri, Maxar, GeoEye, Earthstar Geographics, CNES/Airbus DS, USDA, USGS, AeroGRID, IGN, and the GIS User Community

