



Empowering Pennsylvanians to
keep our communities clean and beautiful

Shannon Reiter, President
Keep Pennsylvania Beautiful

724.836.4121 | sreiter@keppabeautiful.org

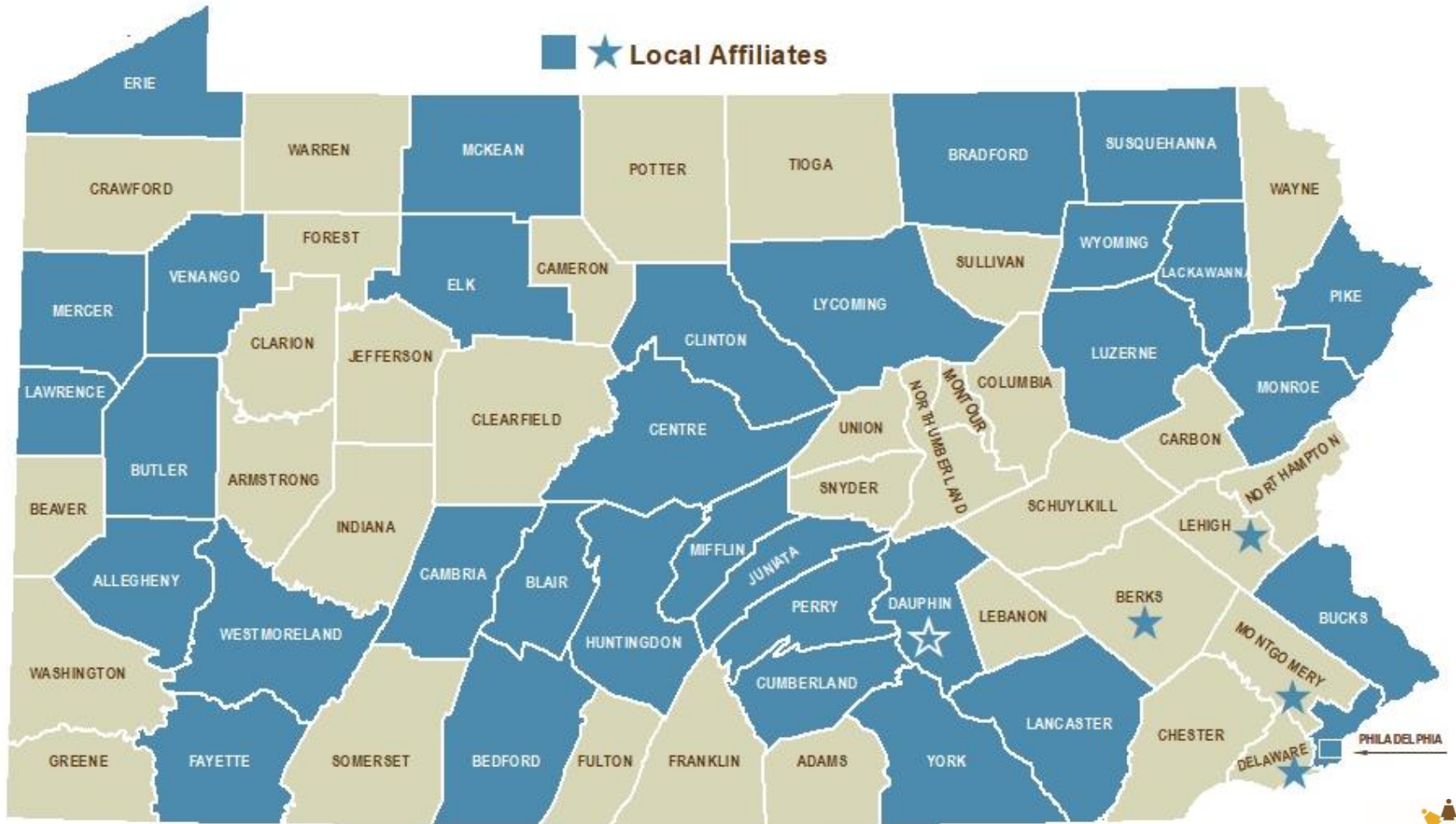
keppabeautiful.org

Annual Impact

- Sponsor and support 6,853 community improvement events
- Properly dispose of 42,507 tires
- Collect nearly 7 million pounds of trash
- Engage 130,885 volunteers
- Leverage \$18 in community match for every dollar invested in KPB



Affiliate Network Map



Pick Up Pennsylvania

Annual Community Improvement Program

- Technical assistance
- Supplies and resources donated by PA DEP and KAB and distributed by PennDOT
- Free and or reduced cost disposal at 43 facilities in 63 counties



2021 PICK UP PENNSYLVANIA SPONSORS



SUPPORTING THE GREAT AMERICAN CLEANUP & INTERNATIONAL COASTAL CLEANUP—KEEP PABEAUTIFUL.ORG



Pick Up Pennsylvania

Keep Wilkinsburg Beautiful Cleanup May 15, 2021

- **75:** Number of attendees at the kick-off event
- **126:** Volunteers working on clean-up projects around Wilkinsburg
- **52:** Registered clean-up projects
- **8:** Neighborhoods, including 5 vacant lots and 6 alleyways
- **17:** Tons of garbage, debris, tires, furniture, mattresses, etc. (Waste Management donated disposal)



Comprehensive Litter Study Provides Key Information to Develop Strategies to Reduce Littering Behavior

- Public Attitude Survey
- Visible Litter Study
- Municipal Litter and Illegal Dumping Cost Study
- Litter Summit November 2019

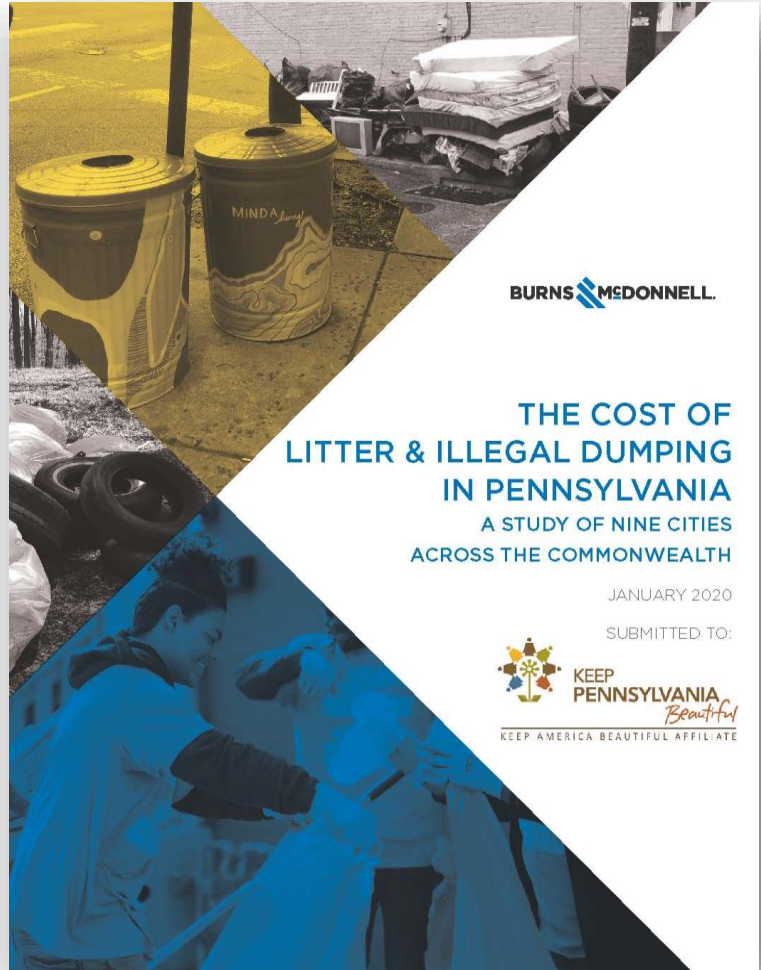




BURNS  MCDONNELL.

PENNSYLVANIA LITTER RESEARCH STUDY

JANUARY 2020
SUBMITTED TO:



BURNS  MCDONNELL.

THE COST OF LITTER & ILLEGAL DUMPING IN PENNSYLVANIA

A STUDY OF NINE CITIES
ACROSS THE COMMONWEALTH

JANUARY 2020

SUBMITTED TO:



KEEP
PENNSYLVANIA
Beautiful
KEEP AMERICA BEAUTIFUL AFFILIATE

Public Attitudes towards Litter in Pennsylvania

- Over 90 percent of survey respondents reported that LITTER IS A PROBLEM in Pennsylvania.
- Fast Food packaging, plastic film, beverage containers and tobacco products are PERCEIVED to be the most commonly littered items.
- When asked about the impacts of litter:
 - 93 percent strongly agree or agree that litter REDUCES PROPERTY VALUES,
 - 87 percent strongly agree or agree that litter NEGATIVELY IMPACTS TOURISM AND BUSINESS,
 - 76 percent strongly agree or agree that litter CAUSES TAXES TO INCREASE BECAUSE OF CLEANUP COSTS

In partnership with:



Over 500,000,000 Pieces of Litter on Pennsylvania Roadways

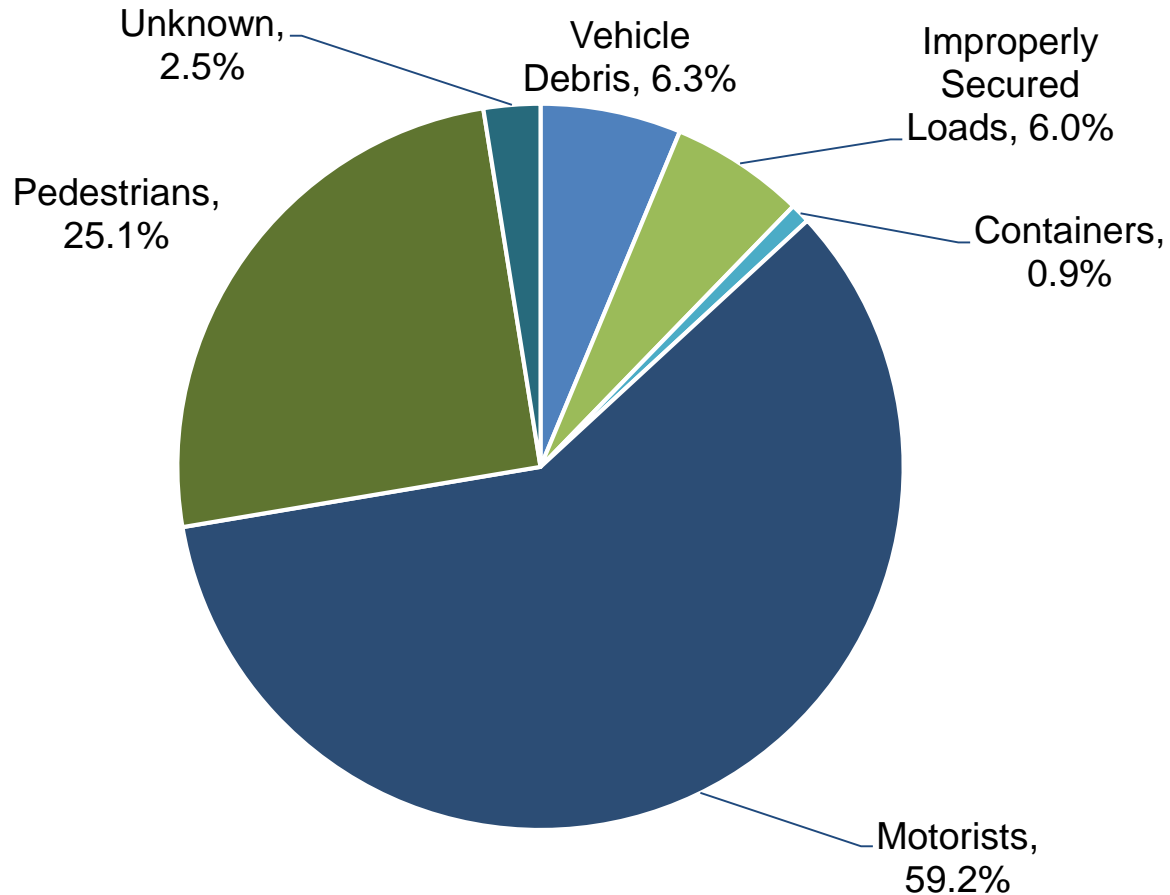
Roadway Type	Average Items per Mile	PA Road Shoulder Miles	PA Litter (Two-sided)
Urban Roads	2,585	50,206	259,543,023
Rural Roads	1,635	74,268	242,924,751
Subtotal	2,018	124,474	502,467,774
Interstate Roads	7,523	4,960	74,630,772
Arterial Roads	5,107	14,616	149,283,766
Collector Roads	2,570	20,066	103,156,199
Local Roads	1,034	84,832	175,397,037
Subtotal	2,018	124,474	502,467,774

In partnership with:



KEEP PENNSYLVANIA
Beautiful
KEEP AMERICA BEAUTIFUL AFFILIATE

Motorist and Pedestrians are the Primary Sources for Litter

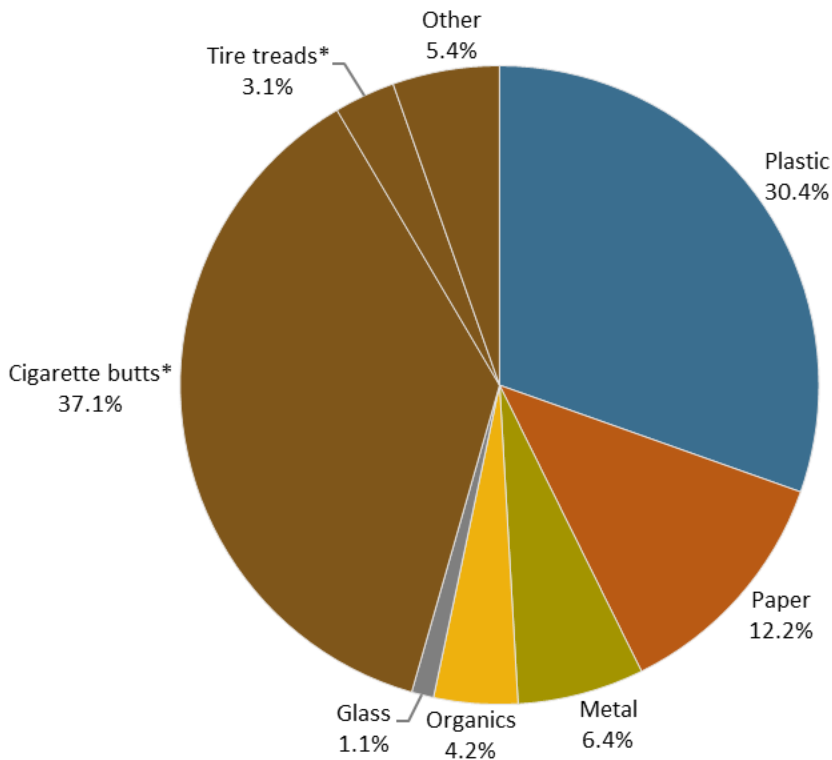


In partnership with:

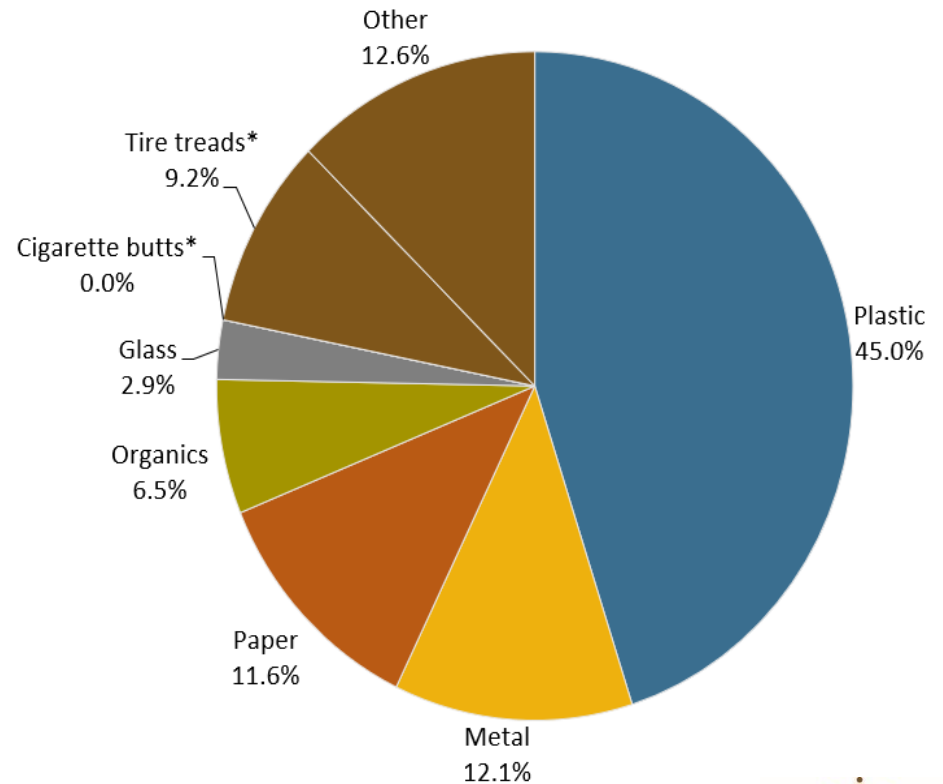


Litter in Pennsylvania: Composition of Material Groups

**AGGREGATE COMPOSITION OF LITTER
(ALL PENNSYLVANIA ROADWAYS)**



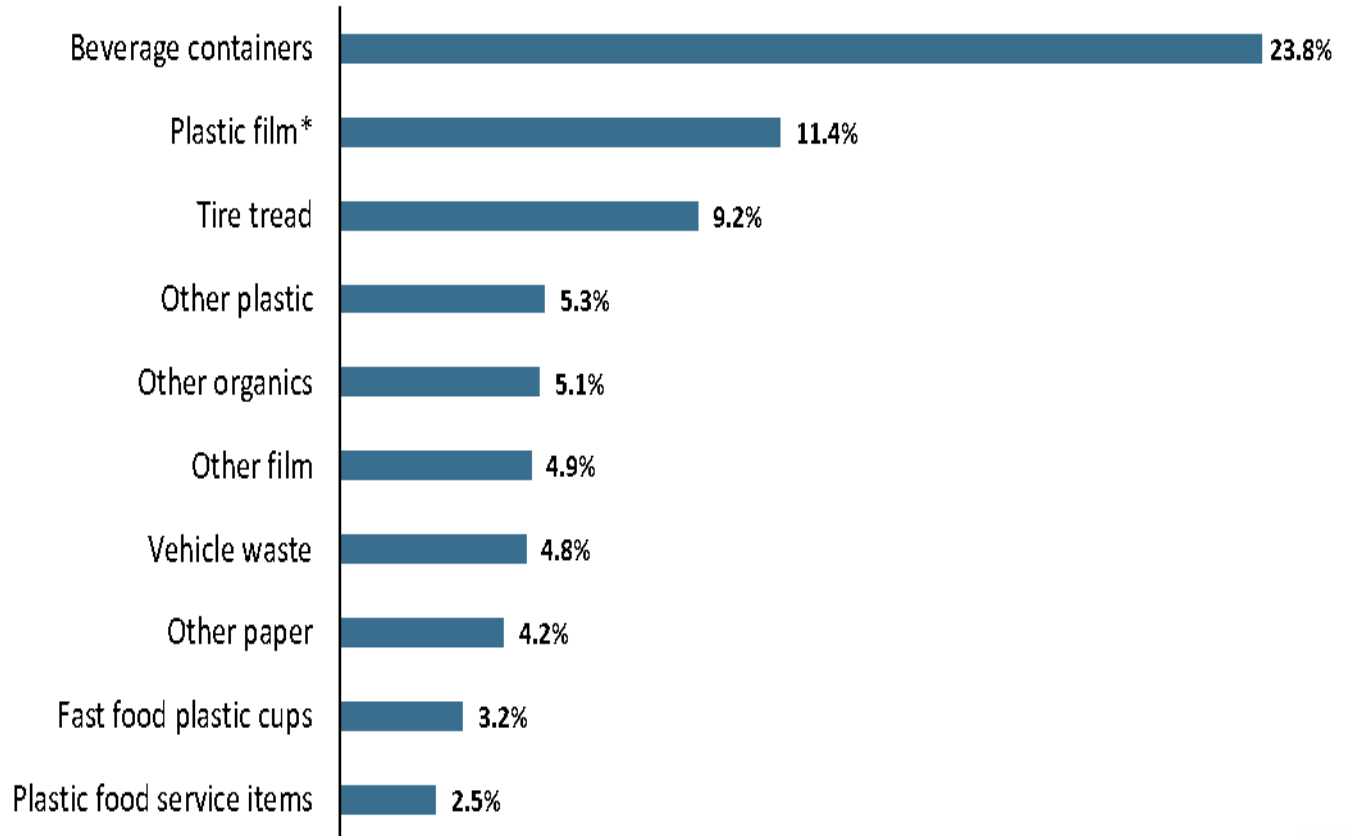
**TYPES OF LITTER 4-INCH PLUS
(ALL PENNSYLVANIA ROADWAYS)**



In partnership with:



Top 10 Aggregate Litter Items 4-Inch Plus Litter by Count (All Roadways)

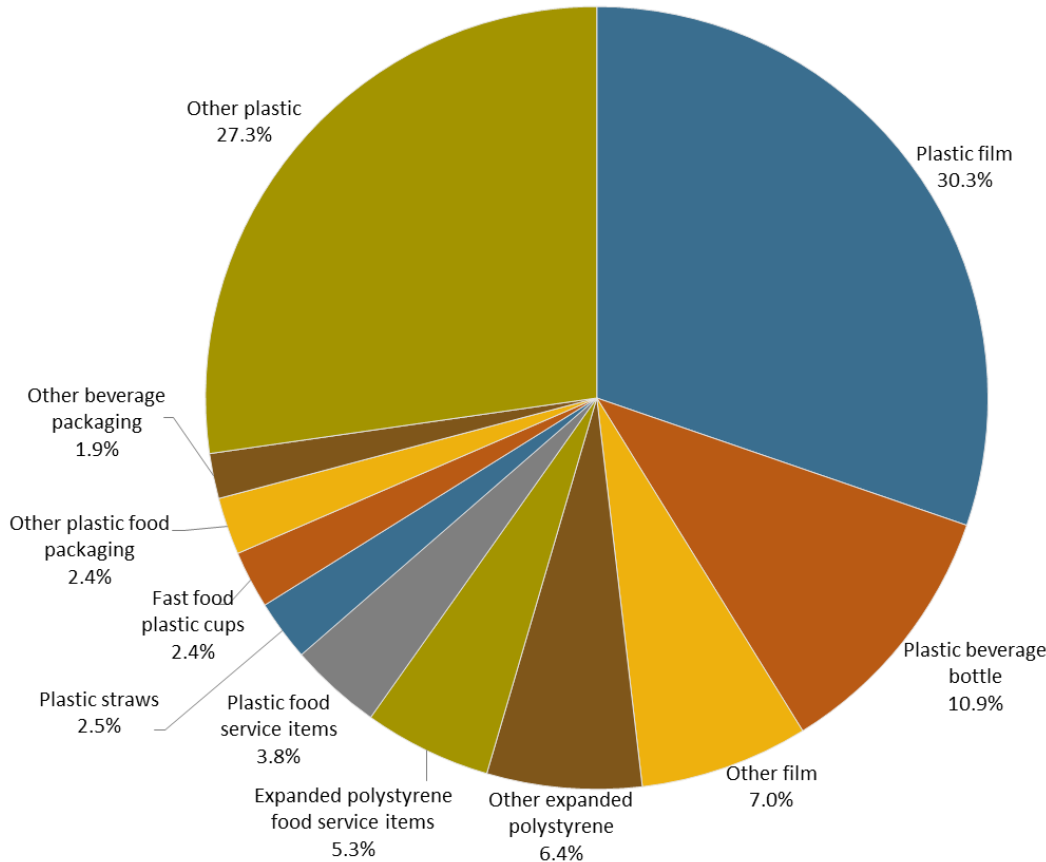


In partnership with:



Plastics: Key Findings

COMPOSITION OF PLASTIC LITTER BY MATERIAL CATEGORY (ALL PENNSYLVANIA ROADWAYS)



- Plastic represents over 30 percent (152.9 million) of all litter found on Pennsylvania roadways.
- Plastic film including plastic trash bags, other plastic bags and food packaging film was the most prevalent plastic items found littered on Pennsylvania roadways followed by other plastic and plastic beverage containers.

In partnership with:



KEEP PENNSYLVANIA Beautiful
KEEP AMERICA BEAUTIFUL AFFILIATE

Aggregate Composition of Plastic Litter by Material Category (All Pennsylvania Roadways)

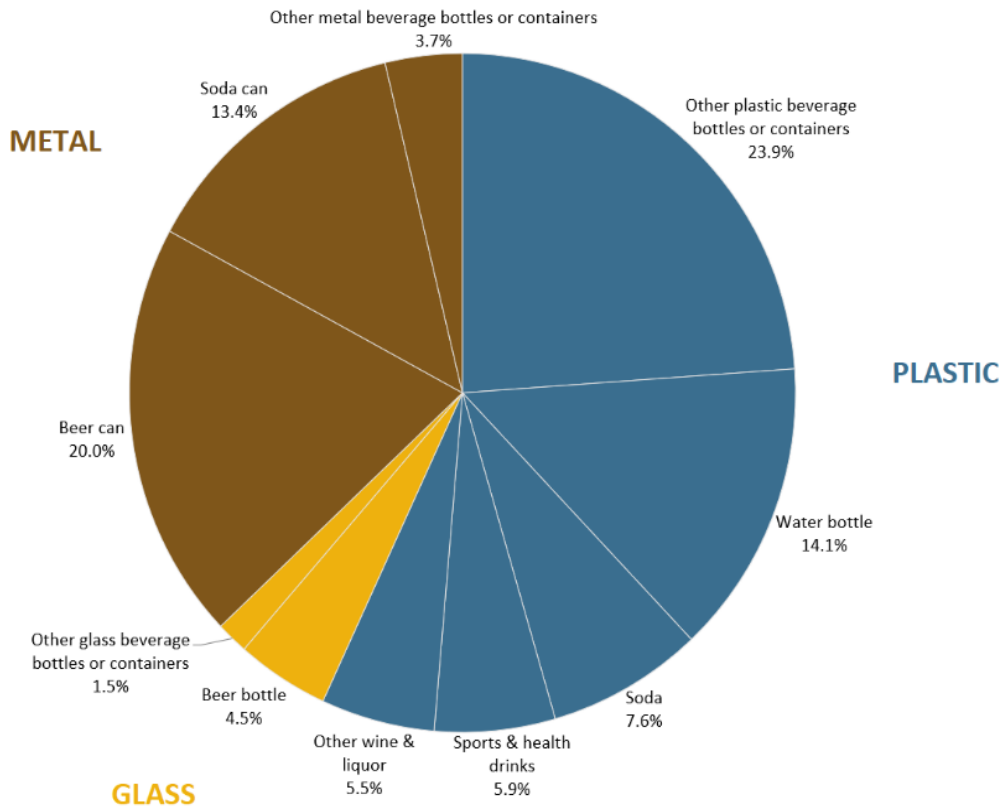
Group	Categories	4-inch-plus	4-inch-less	Total Count	Percent of Total
Plastic	Food packaging film	5,849,242	33,201,193	39,050,435	7.8%
	Other film	3,585,321	7,056,673	10,641,993	2.1%
	Other expanded polystyrene	682,685	9,092,026	9,774,711	1.9%
	Expanded polystyrene food service items	1,236,963	6,820,568	8,057,531	1.6%
	Other plastic beverage bottles or containers	1,024,543	4,929,704	5,954,247	1.2%
	Plastic food service items	1,802,159	4,017,632	5,819,791	1.2%
	Water bottle	3,669,078	455,732	4,124,811	0.8%
	Plastic straws	1,275,175	2,563,218	3,838,392	0.8%
	Plastic trash bags - empty	178,935	3,455,778	3,634,713	0.7%
	Fast food plastic cups	2,306,685	1,322,345	3,629,031	0.7%
	Other plastic food packaging	1,062,208	2,551,807	3,614,014	0.7%
	Other plastic bags - empty	1,944,042	1,366,453	3,310,495	0.7%
	Other beverage packaging	230,245	2,622,543	2,852,789	0.6%
	Soda	2,105,786	111,467	2,217,253	0.4%
	Sports & health drinks	992,569	722,773	1,715,342	0.3%
	Other wine & liquor	6,067	1,613,482	1,619,549	0.3%
	Tea & coffee	287,473	279,819	567,293	0.1%
	Juice	238,986	-	238,986	0.0%
	Single serve wine & liquor	125,710	111,467	237,176	0.0%
	Other plastic bags - full	170,890	-	170,890	0.0%
	Plastic trash bags - full	113,127	-	113,127	0.0%
Other plastic	3,841,673	37,845,592	41,687,265	8.3%	
Subtotal Plastic	32,729,562	120,140,272	152,869,834	30.4%	

In partnership with:



Beverage Containers: Key Findings

AGGREGATE COMPOSITION OF BEVERAGE CONTAINER LITTER BY COUNT (ALL PENNSYLVANIA ROADWAYS)



- An estimated 29.3 million beverage containers are currently littered on Pennsylvania roadways.
- 93.9 percent of the beverage containers littered on Pennsylvania roadways are composed of plastic (56.9 percent) or metal (37.1 percent). Three percent are composed of glass.
- There are more than 16 million plastic beverage containers littered on Pennsylvania roadways, including 4 million plastic water bottles.
- There are more than 10.8 million metal beverage containers littered on Pennsylvania roadways including 5.8 million beer cans and 3.9 million soda cans.
- When asked what is the main type of litter in Pennsylvania, 67 percent of Pennsylvania residents said non-alcoholic beverage bottles and cans for water, soda, tea and coffee and 11 percent said alcoholic beverage container bottles and cans.

In partnership with:



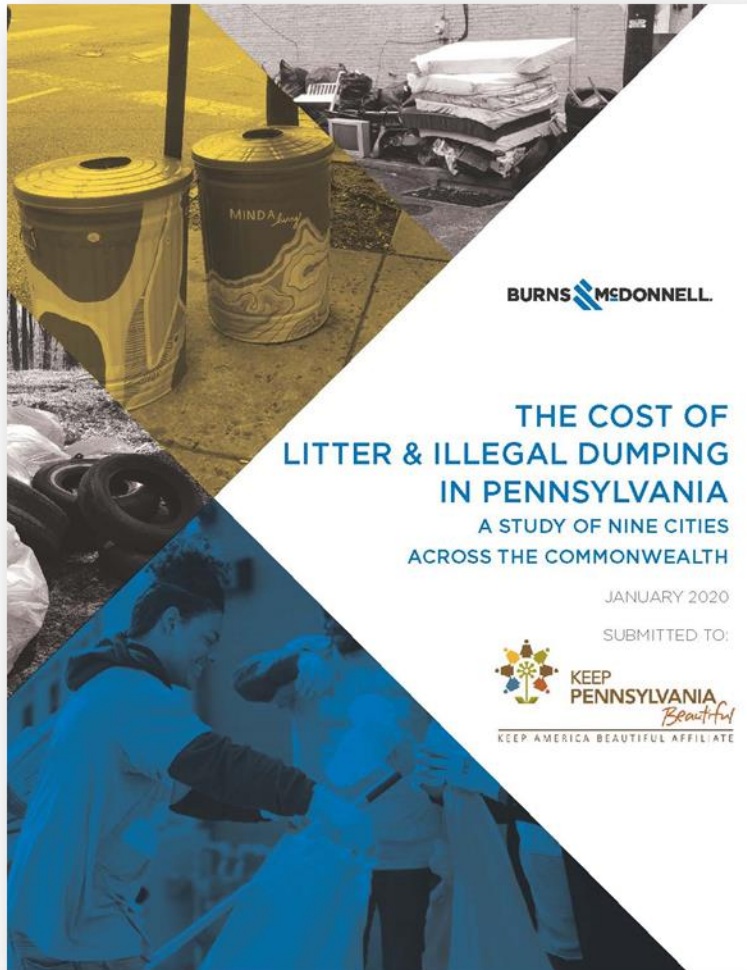
Summary: The Pennsylvania Litter Study

- **Over 500 million pieces of litter can be found on Pennsylvania's roadways.**
- **Cigarette butts and plastic collectively compose the majority of litter items.** Of the total estimated litter, 186.2 million (37.1 percent) were cigarette butts followed by 152.9 million (30.4 percent) pieces of plastic. Plastics represent 45 percent of all visible litter 4 inches or greater.
- **The composition of litter varies by the size of the litter item.** Beverage containers and plastic film, including plastic trash bags, other plastic bags and food packaging film, were the most predominant types of larger litter. Cigarette butts are the most common smaller items.
- **Over 40 million beverage containers and fast food products are littered on Pennsylvania roadways.** An estimated 29.3 million beverage containers and 12.3 million fast food products are currently littered on Pennsylvania roadways.
- **Motorists and pedestrians are leading sources of litter for both small and large items.** For litter items greater than four inches, improperly secured loads also become a factor.
- **Freeways and expressways had the most litter items per mile.** Freeways and expressways had the most litter per mile (7,523 litter items per mile on average). In contrast, local roads had the lowest littered items per mile (1,034 litter items per mile).

In partnership with:



Municipal Litter and Illegal Dump Cost Study



Study provides an in-depth analysis of the costs incurred by individual municipalities when managing litter and illegal dumping at the municipal level.

Study provides cost averages for the following:

- Litter Prevention
- Illegal Dump Prevention
- Education and Outreach
- Litter Abatement
- Illegal Dump Abatement
- Enforcement

Municipal Litter and Illegal Dump Cost Study



In partnership with the Richard King Mellon Foundation and participating cities.

Municipal Litter and Illegal Dump Cost Study

KEY RESULTS

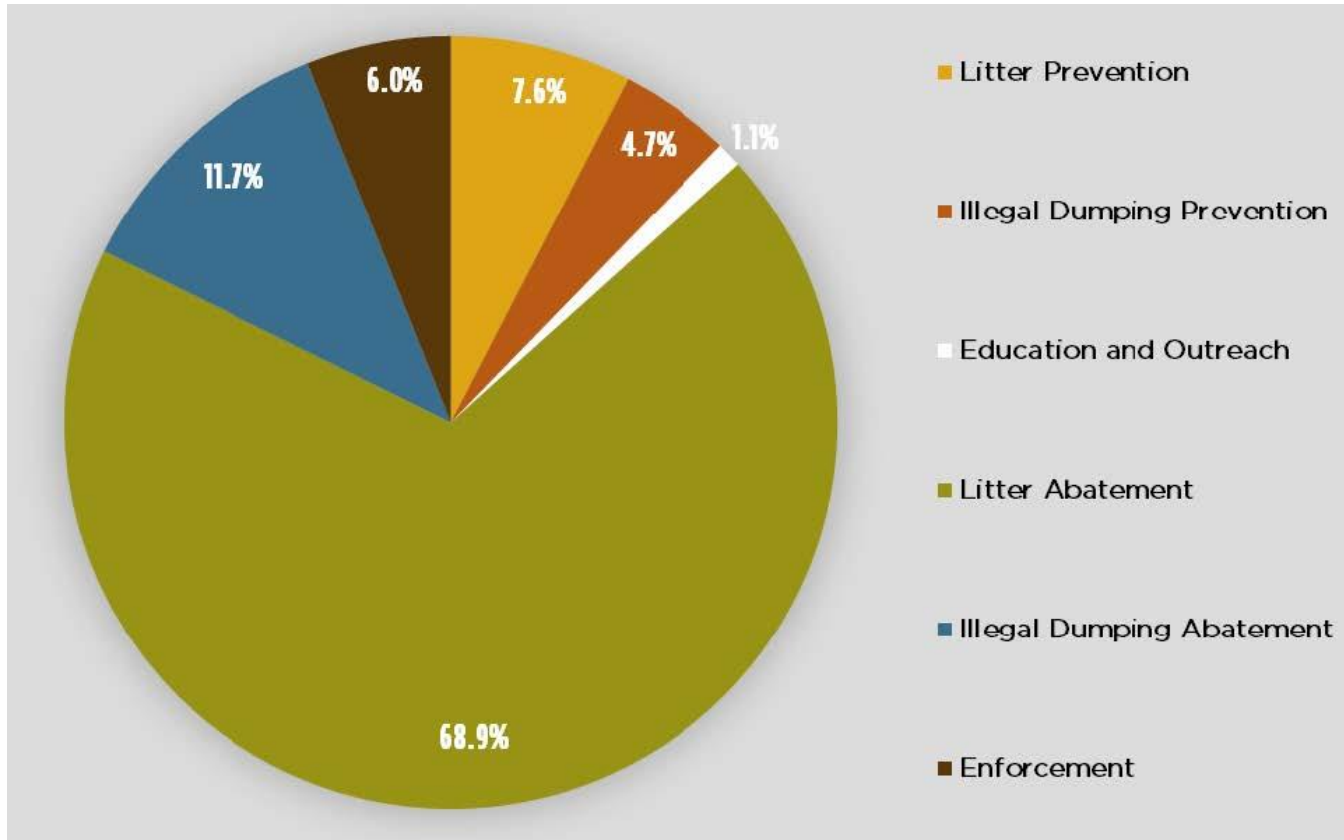
Regardless of size and geography, each of the nine case study cities spend significant sums annually to prevent and clean up litter and illegal dumping. **Together, these nine cities spend more than \$68.5 million annually.**¹

City	Prevention		Education & Outreach	Abatement		Enforcement	Total	Population ¹
	Litter	Illegal Dumping		Litter	Illegal Dumping			
Allentown	\$ 1,291,700	\$ 8,900	\$ 35,000	\$ 2,192,100	\$ 370,200	\$ 669,300	\$ 4,567,200	121,433
Altoona	\$ 227,300	\$ 151,800	\$ 2,300	\$ 260,700	\$ 26,000	\$ 143,500	\$ 811,600	43,702
Erie	\$ 151,100	\$ 498,600	\$ 17,300	\$ 998,400	\$ 207,900	\$ 345,700	\$ 2,219,000	96,471
Harrisburg	\$ 73,400	\$ 34,700	\$ 102,200	\$ 1,242,700	\$ 235,500	\$ 49,000	\$ 1,737,500	49,229
Lancaster	\$ 20,000	\$ 1,000	\$ 5,500	\$ 1,393,300	\$ 7,200	\$ 704,500	\$ 2,131,500	59,420
Philadelphia	\$ 1,217,000	\$ 2,163,400	\$ 547,300	\$ 36,314,700	\$ 6,376,800	\$ 1,778,300	\$ 48,397,500	1,584,138
Pittsburgh	\$ 2,734,400	\$ 246,800	\$ 57,700	\$ 2,706,900	\$ 232,400	\$ 331,300	\$ 6,309,500	301,048
Reading	\$ 70,500	\$ 126,500	\$ 9,400	\$ 1,437,200	\$ 404,600	\$ 29,700	\$ 2,077,900	88,495
Scranton *	\$ 66,400	\$ -	\$ -	\$ 138,800	\$ 26,000	\$ 38,900	\$ 270,100	77,182
Total	\$ 5,851,800	\$ 3,231,700	\$ 776,700	\$ 46,684,800	\$ 7,886,600	\$ 4,090,200	\$ 68,521,800	2,421,118

* Complete cost data was not available from the City of Scranton for the Study.

Municipal Litter and Illegal Dump Cost Study

Total Measured Costs by Activity Category

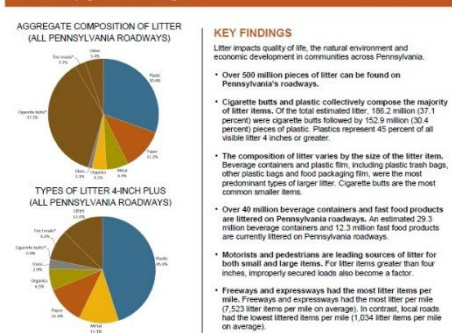
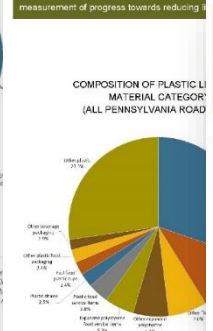
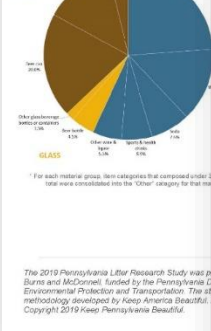


In partnership with the Richard King Mellon Foundation and participating cities.

Resources Available

www.dep.pa.gov/litteringactionplan

- Research Reports
- Fact Sheets
- Photos
- Social Media Graphics
- Press releases



In partnership with:



Next Steps

- State Litter Action Plan- Coordinated by DEP and PennDOT Policy Offices with support from KPB www.dep.pa.gov/litteringactionplan
 - Education
 - Infrastructure
 - Laws and Enforcement
 - Partnerships





Thank You

**Shannon Reiter, President
Keep Pennsylvania Beautiful**

724.836.4121 | sreiter@keeppabeautiful.org
keeppabeautiful.org