



PENNDOT'S NEVI PROGRAM

COLTON BROWN, PENNDOT

EV CHARGING



Charge Time



Charging Locations



EV Plug Type



Power Source

Level 1

3.5 - 6.5 miles
Per Hour
(charge overnight)

Residential
Parking,
Home Garage



J1772



Tesla



Standard
Wall Outlet

Level 2

14 - 35 Miles
Per Hour

Longer Term
Public or
Private Parking



J1772



Tesla



Heavy Duty Outlet
(Dryer/Cooking
Appliances)

DC Fast Charge

200+ miles
Per Hour

Interstates,
Roadways &
Convenience
Locations



CCS



CHAdeMO

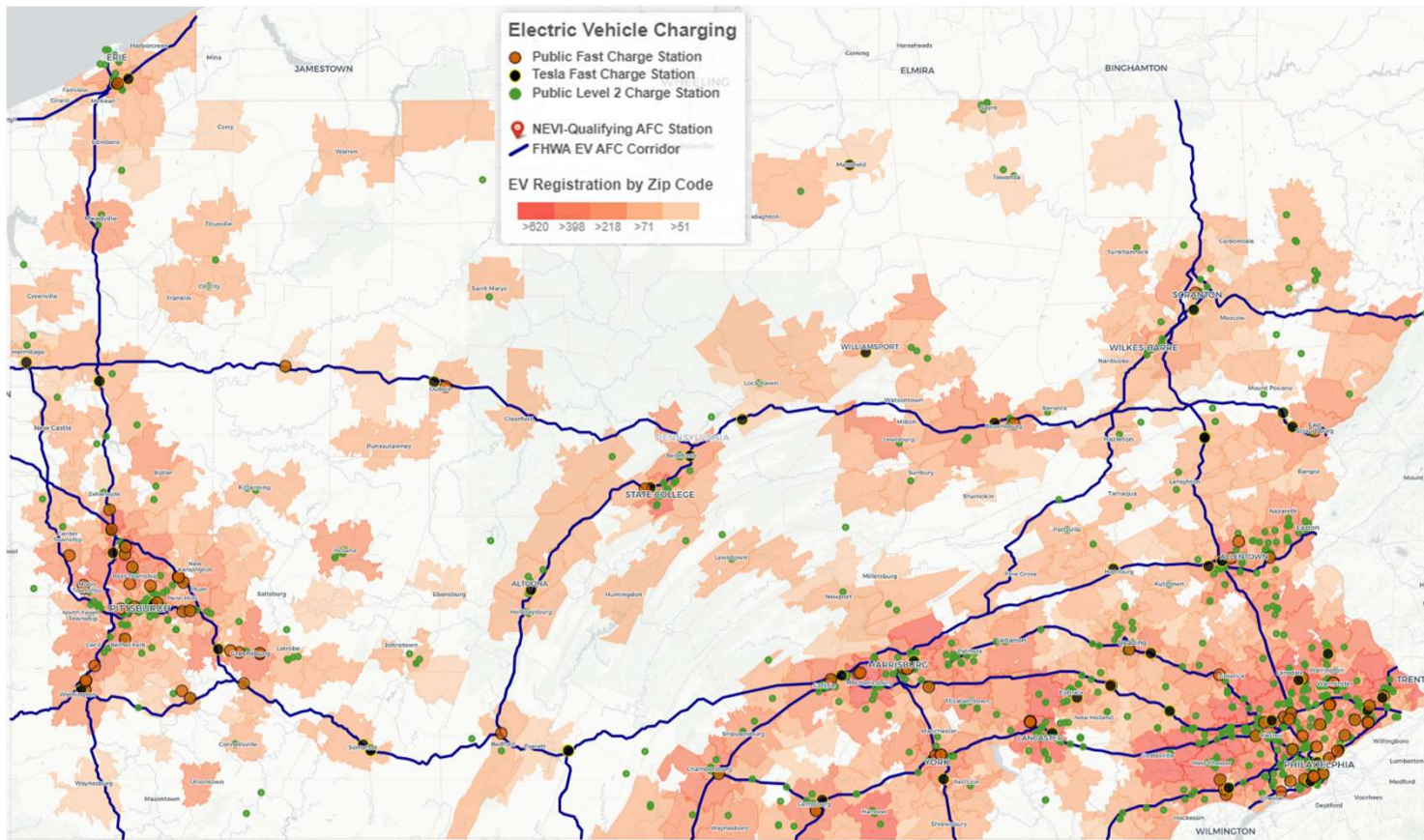


Tesla



Charging
Station

PUBLIC CHARGING STATIONS

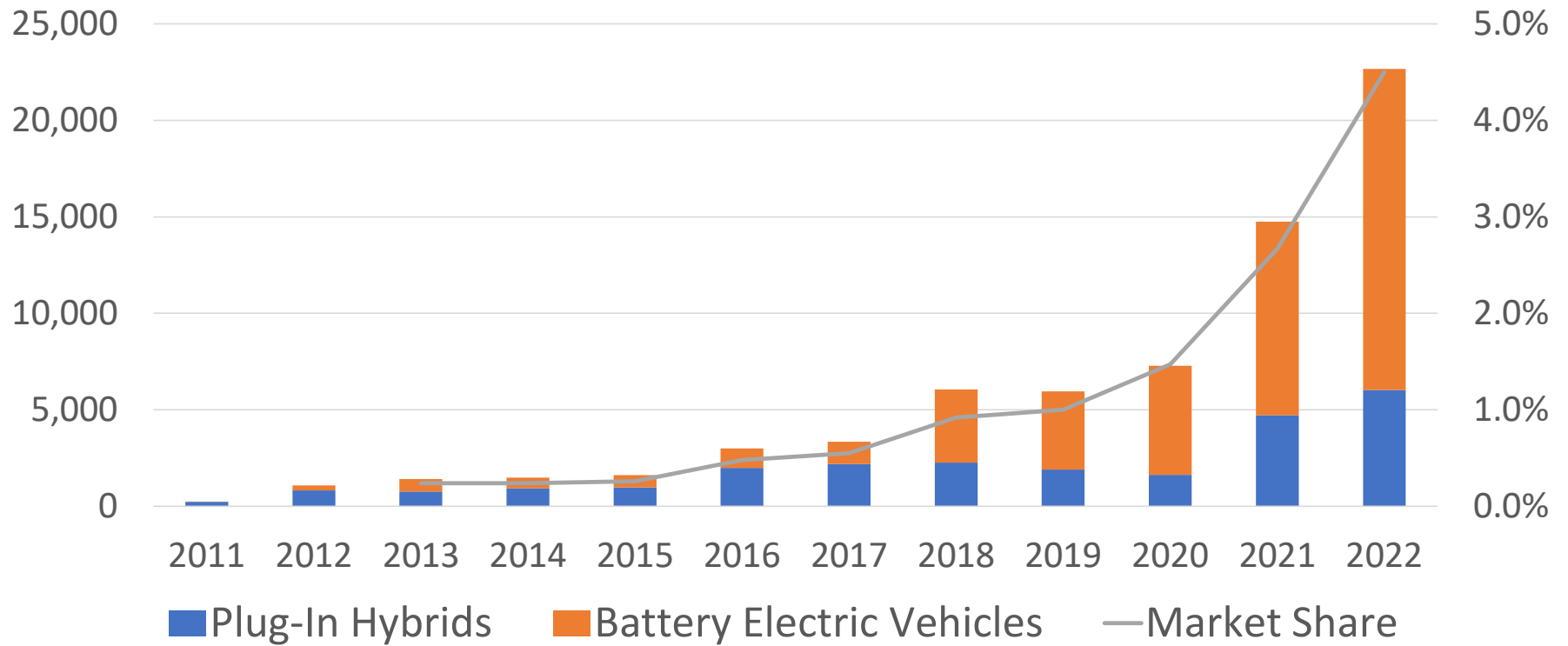


- Resources:
 - [Penndot.pa.gov/EV](https://penndot.pa.gov/EV)
 - 511PA.com and App
 - Alternative Fuel Data Center (AFDC)
 - PlugShare
 - ChargeHub
 - In-vehicle support
- Websites
- Apps
- Trip Planners

Over 3,700 public plugs at over 1,350 locations

ELECTRIC VEHICLE SALES

Annual Electric Vehicle Sales in Pennsylvania



Source: Atlas EV Hub

OVERVIEW OF PA'S NEVI FORMULA PROGRAM



- Provides PA \$171.5 million over next 5 years for electric vehicle (EV) infrastructure
 - Federal Fiscal Year 2022 - \$25.4 million
 - Federal Fiscal Years 2023-2026 - \$36.5 million annually
- PennDOT submitted state plan on July 21, 2022.
- PennDOT NEVI plan approved on Sept 14, 2022.
- Pre-announcement of Pennsylvania Program – Oct. 12, 2022
- Pennsylvania Program Document Released – January 6, 2023
 - Updated – March 13, 2023
 - Round 1 Online Submissions Closed – May 5, 2023

YEARS 1-2 CHARGING FOCUS

DC Fast Charging

Public

4 ports

CCS Connectors

At least 150kw power per port (600kw total)

Within 1-mile of highway, 50 miles of the next station

How to Charge Your EV



Charge Time



Charging Locations

Level 1

3.5 - 6.5 miles
Per Hour

Residential,
Workplace

Level 2

14 - 35 Miles
Per Hour

Residential,
Workplace,
Destinations

DC Fast Charge

200+ miles
Per Hour

Highways,
Communities,
Destinations



ALTERNATIVE FUEL CORRIDORS



- PennDOT has nominated corridors over 6 rounds - includes interstates and portions of US 30, US 15, Route 1, and Route 422 - over 1,800 miles of roadway
- NEVI funding must be applied to AFCs until a “**Build-Out**” certification by FHWA

PRIORITY LOCATIONS

PRIORITY I:

Selected via gap analysis to most likely meet AFC build-out

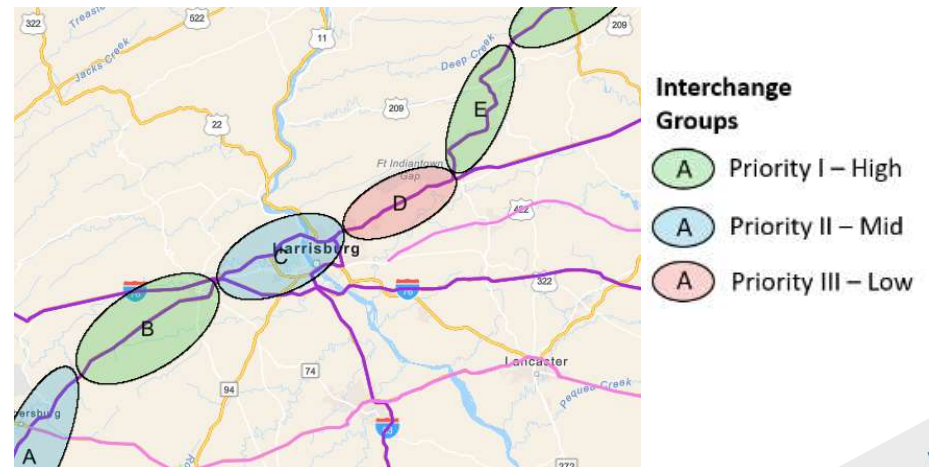
PRIORITY II:

Interchanges in locations closer to existing sites/or likely to be redundant.

PRIORITY III:

Interchanges that already has NEVI-qualifying EV charging site.

- Round 1 will focus on Pennsylvania's primary and auxiliary interstate AFC network and includes 11 primary interstates and four (4) auxiliary interstates
- [PennDOT's interchange group map](#) shows the ~80 gaps labeled as Priority I, II, or III
- One site at an interchange within each Priority I group will be selected first, followed by one site within each of the Priority II groups of interchanges.



PROJECT SELECTION PROCESS

Date	Item
January 6, 2023	Program Document released
March 13, 2023	Revised Program Document released
January-Mid March 2023	Submit utility form to utility provider so the utility can complete and return the form to the interested organization in time for the submission due date
March 24, 2023	Any technical questions regarding the program document must be submitted to RA-PDEVCorridors@pa.gov. Frequently asked questions and answers will be posted publicly online to the PennDOT NEVI site.
March 27, 2023	Online submission period begins
May 5, 2023	PA NEVI program submission period ends at 5 PM EDT
May – June 2023	PennDOT proposed projects review
July 2023	Preliminary award approval and denial notifications
July – September 2023	PennDOT NEPA Process
September 2023	Final award approval and denial notifications
October – November 2023	Agreement execution; Notice to Proceed



PROJECT SCORING ELEMENTS

Scoring Category	Points
1. Qualifications and Project Approach	12
2. Candidate Site Information	40
3. Site Readiness	8
4. Future Proofing	4
5. Sustainability, Equity, Resilience, and Economic Development	12
6. Safety and Training	4
7. Project Costs	20
Total	100



SCORING RUBRIC TRANSPARENCY

5. Sustainability, Equity, Resilience, and Economic Development [12pts]

ID	Element	Description	Score Breakdown Points	Max Points
5.1	Renewable Energy Usage	Renewable energy sources used for charging energy	0pts: No renewable energy used 0.5pts: 50% renewable energy used 1pts: 100% renewable energy used	1
5.2	Innovative Technologies and Battery Storage	Innovative technologies and/or approaches to site design, charging, and power storage	0pts: No / minimal innovation used in project 0.5-2pts: Based on amount and level of innovations used across project areas	2
5.3	Use of Diverse Businesses	Involvement of small, women-owned, minority-owned, veteran-owned, and/or other diverse businesses and/or workforce	0pts: No or minimal diverse businesses involved in project delivery 1pt: Moderate number of diverse businesses / equivalent workforce used in project delivery 2pts: Substantial number of diverse businesses / equivalent workforce involved in project delivery	2

5.4	Use of Local Businesses	Involvement of local businesses and/or workforce in project	0pts: No or minimal involvement of local businesses / equivalent workforce in project 1pt: Moderate involvement of local businesses / equivalent workforce in project 2pts: Substantial involvement of local businesses / equivalent workforce in project	2
5.5	Charging Accessibility, Equity Principles, and Justice40 Initiatives	<ul style="list-style-type: none"> • Users with Disabilities • Payment Options • Multilingual Access • Additional Equity Principles 	0pts: No / minimal accessible design for charging and/or no equity principles followed 1-5pts: Based on ability to provide for accessible charging and follow PennDOT's EV equity principles and the Justice40 Initiative	5



QUESTIONS?

RESOURCES

- [Electric Vehicles and Alternative Fuels \(pa.gov\)](#)
- [National Electric Vehicle Infrastructure \(NEVI\) Formula Program \(pa.gov\)](#)
- [EV Mobility Plan \(pa.gov\)](#)
- [Drive Electric PA Coalition](#)
- [Electric Vehicles in PA](#)
- [PA EV Roadmap](#)
- [Alternative Fuels Incentive Grant](#)
- [Driving PA Forward](#)
- [PennDOT Interactive NEVI Map](#)

CONTACT INFORMATION

Colton Brown, Alternative Fuels Infrastructure Coordinator
Pennsylvania Department of Transportation
Email: coltbrown@pa.gov