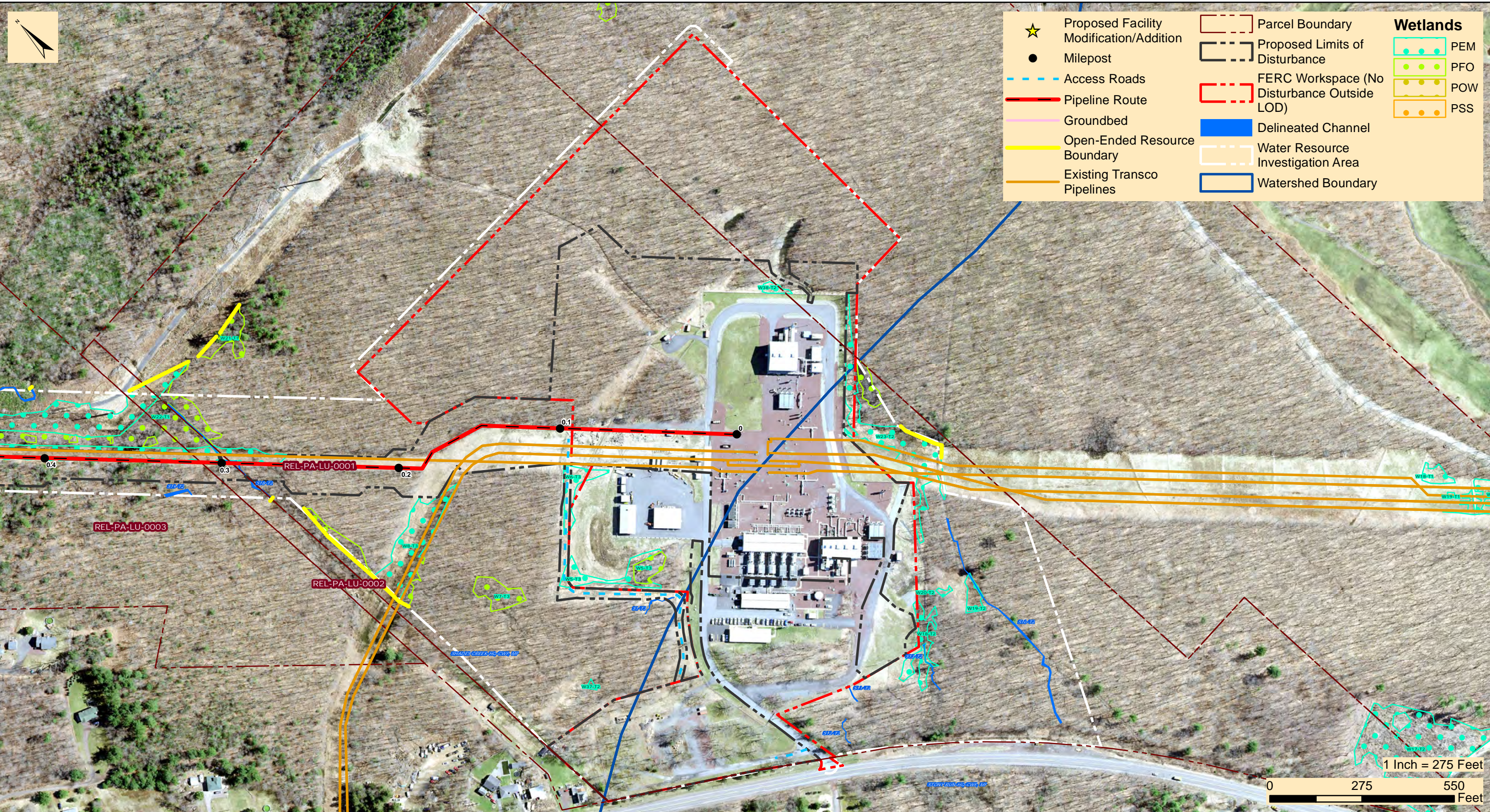


*Regional Energy Access Expansion Project
401 Water Quality Certification Application
Transcontinental Gas Pipe Line Company, LLC*

**SECTION 10.2.3
EXISTING COMPRESSOR STATION 515**

M:\GIS\PROJECTS\REGIONAL_ENERGY_ACCESS_COMPRESSOR_STATION_515\401_Project_Location_Mapping\CSS15_401_Project_Location_Mapping_03092021.mxd



★	Proposed Facility Modification/Addition	Parcel Boundary	Wetlands
●	Milepost	Proposed Limits of Disturbance	
- - -	Access Roads	FERC Workspace (No Disturbance Outside LOD)	
—	Pipeline Route	Delineated Channel	
—	Groundbed	Water Resource Investigation Area	PEM
—	Open-Ended Resource Boundary	Watershed Boundary	PFO
—	Existing Transco Pipelines		POW
			PSS



TRANSCONTINENTAL GAS PIPE LINE COMPANY, LLC
REGIONAL ENERGY ACCESS EXPANSION PROJECT
COMPRESSOR STATION 515
SITE PLANS

BUCK TOWNSHIP

LUZERNE COUNTY

PENNSYLVANIA

Date:	3/25/2021
WHM DRAWING NUMBER:	WILLIAMS20244
Drawn By:	FTN
Figure Number:	1

M:\GIS\PROJECTS\REGIONAL_ENERGY_ACCESS_COMPRESSOR_STATION_515\401 Project Location Mapping\CS515\CY_401\ProjectLocation_Mapping_03092021.mxd



TRANSCONTINENTAL GAS PIPE LINE COMPANY, LLC
REGIONAL ENERGY ACCESS EXPANSION PROJECT
COMPRESSOR STATION 515 CONTRACTOR YARD
 SITE PLANS

BUCK TOWNSHIP

LUZERNE COUNTY

PENNSYLVANIA

Date:	3/25/2021
WHM DRAWING NUMBER:	WILLIAMS20244
Drawn By:	FTN
Figure Number:	2