



Transcontinental Gas Pipe Line Company, LLC

Section 2-5 E&SC Plan Narrative and Drawings

**Regional Energy Access Expansion Project –
Delaware River Regulator**

April 2021

TABLE OF CONTENTS

Sections

1. Project Description (NOI Checklist Item 3.n)
2. Topographic Features of the Area (NOI Checklist Item 3.a)
3. Receiving Surface Waters (NOI Checklist Item 3.e)
4. Types, Depth, Slope, Locations & Limitation of the Soils and Geologic Formations (NOI Checklist Item 3.b, 3.l)
 - 4.1 Resolutions to Soil Limitations
 - 4.2 Geologic Formations
5. Characterizations of Earth Disturbance Activities, Including Past, Present, and Proposed Land Uses (NOI Checklist Item 3.c)
6. Erosion and Sediment Control Best Management Practices (NOI Checklist Item 3.f)
7. Recycling and Disposal of Materials (NOI Checklist Item 3.k)
8. Thermal Impacts (NOI Checklist Item 3.m)
9. Antidegradation Requirements (NOI Checklist Item 3.p)
10. Riparian Buffers (NOI Checklist Item 3.o)
11. Project Site Runoff (NOI Checklist Item 3.d)
12. Site Restoration Plan
 - 12.1 Previous Land Use
 - 12.2 Disturbance Activities, Changes to Permanent Topographic Land Cover
 - 12.3 Restoration Measures
 - 12.4 Maintenance and Evaluation for Effectiveness
13. The Erosion and Sediment Control Plan Shall be Prepared by a Person Trained and Experienced in Erosion Control Methods and Techniques

Attachments

- 1 Project Location Map
- 2 Soils Map and Report
- 3 E&SC Plan BMP Design Worksheets and Calculations

Regional Energy Access Expansion Project
ESCGP-3 Permit Application
Transcontinental Gas Pipe Line Company, LLC
Section 2-5 E&SC Plan Narrative for Delaware River Regulator

Drawings (NOI Checklist Item 3.i)

- 1 of 6 Erosion and Sediment Control Plan - Cover
- 2 of 6 Erosion and Sediment Control Plan - Existing Conditions Plan
- 3 of 6 Erosion and Sediment Control Plan - Site Plan
- 4-5 of 6 Erosion and Sediment Control Plan - Notes
- 6 of 6 Erosion and Sediment Control Plan - Details

SECTION 2.5.1
NARRATIVE

1. Project Description (NOI Checklist Item 3.n)

Transcontinental Gas Pipe Line Company, LLC (Transco), indirectly owned by the Williams Companies, Inc. (Williams) is seeking authorization from the Federal Energy Regulatory Commission (FERC) under Section 7(c) of the Natural Gas Act to construct, own, operate, and maintain the proposed Project facilities associated with the Regional Energy Access Expansion Project (Project). The Project is an expansion of Transco's existing natural gas transmission system that will enable Transco to provide an incremental 829,400 dekatherms per day (Dth/d) of year-round firm transportation capacity from the Marcellus Shale production area in northeastern Pennsylvania to multiple delivery points along Transco's Leidy Line in PA and Mainline in PA, NJ, and MD.

The existing Delaware River Regulator component of the Project is located in Lower Mount Bethel Township, Northampton County. Proposed are facility modifications to upsize the existing control valves.

The Erosion & Stormwater Control (E&SC) Plan has been developed for the Delaware River Regulator site. Transco will use and implement the practices, measures and details outlined herein to control soil erosion and off-site sedimentation. All work and disturbed areas are located within Transco property, existing easements, or legally obtained workspace. The limit of disturbance (LOD) for the Delaware River Regulator site will be approximately 3.25 acres. Subject to FERC's certification of the Project and receipt of the necessary permits and authorizations, Transco anticipates construction of the Project to start in third quarter 2022 to meet a proposed in-service date of December 1, 2023.

2. Topographic Features of the Area (NOI Checklist Item 3.a)

A Project Location Map for Delaware River Regulator is included in Attachment 1. This map shows the topographical features of the general site vicinity and is based on the USGS 7.5 Minute topographical mapping of the Bangor, Pennsylvania-New Jersey quadrangles.

3. Receiving Surface Waters (NOI Checklist Item 3.e)

The following table (Table 1) lists each watershed located in Delaware River Regulator Project Area, its Chapter 93 Water Quality Standards, and Pennsylvania Fish and Boat Commission classifications. A Wetland and Watercourse Delineation Report is included in Attachment A of the ESCGP-3 permit application.

Table 1 – Receiving Waters			
Watershed Name	Designated Use	Existing Use	PFBC Classification
Mud Run	CWF, MF	-	-
MF: Migratory Fishes, CWF: Cold Water fishes			

4. Types, Depth, Slope, Locations & Limitation of the Soils and Geologic Formations (NOI Checklist Item 3.b, 3.I)

The soil associations on site were identified by soil map units as mapped in the Web Soil Survey website (<https://websoilsurvey.sc.egov.usda.gov/>) by the United States Dept. of Agriculture (USDA), Natural Resources Conservation Service (NRCS). There are 3 soil mapping units located within the LOD, see Table 2 below.

Table 2 – Soils Mapping Units within LOD	
Soil Mapping Unit	Soil Series
BkD	Berks-Weikert complex, 15 to 25 percent slopes
DvC	Duffield-Ryder Silt Loams, 8 to 15 percent slopes
PQ	Pits, Quarry

Detailed descriptions and mapping of soil mapping units are provided in the Attachment 2. Soil use limitations (outlined in Table 3) were reviewed in relation to the Delaware River Regulator and resolutions were identified in Section 4.1.

Table 3 – Limitations of Pennsylvania Soils Pertaining to Earth Disturbance Projects (Erosion and Sediment Control Best Management Practice (BMP) Manual – Technical Guidance Number 363-3134-008/Page 401)																	
SOIL NAME	SOIL WITH SLOPE CLASS	CUTBANKS CAVE	CORROSIVE TO CONCRETE/STEEL	DROUGHTY	EASILY ERODIBLE	FLOODING	DEPTH TO SATURATED ZONE/ SEASONAL HIGH WATER TABLE	HYDRIC/HYDRIC INCLUSIONS	LOW STRENGTH / LANDSLIDE PRONE	SLOW PERCOLATION	PIPING	POOR SOURCE OF TOPSOIL	FROST ACTION	SHRINK - SWELL	POTENTIAL SINKHOLE	PONDING	WETNESS
Berks	BkD	X	C	X	X			X		X	X	X					
Duffield	DvC	X	C/S		X			X	X	X	X	X		X	X		X

4.1. Resolution of Soil Limitations

Transco proposes the following resolutions to compensate for soil limitations, summarized

in Table 3 above:

1. To offset the caving of cutbanks, trenching operations will be conducted in accordance with the OSHA Technical Manual for Trenching.
2. Preventative coatings shall be used to prevent corrosion of concrete and/or steel.
3. When bedrock is encountered it will be removed by mechanical methods or blasting. Blasting operations will conform with local, state, and federal regulations.
4. Precautions will be taken to prevent slope failure when working within low strength soils by flattening cut/fill slopes, not overloading, maintaining lateral support, and preventing saturation of soils. Low strength soils will not be used for roadway construction.
5. Excavation in soils prone to flooding, slow percolation, ponding, wetness, location in a seasonal high water table, or are hydric will likely encounter water. Compensation will involve dewatering with appropriate means such as pump water filter bags, sediment traps, etc.
6. Soils that have the potential to swell, shrink, or heave due to frost action may cause damage to roadways or pads. Where foundations are critical, compensation may require removal and replacement of soils with suitable material.
7. In circumstances where soils appear to be a poor source of topsoil, drought, or prone to wetness, soil testing will be performed to determine the appropriate applications of soil amendments to promote growth. Soils onsite that are fair sources of topsoil, will be identified, stripped, and stockpiled for use during restoration.
8. In order to minimize erosion of soils that are easily erodible, compensation may involve providing a protective lining, to apply seed, mulch, erosion control blankets (either in rolls or hydraulically applied), tracking slopes, upstream diversions, waterbars, etc. to minimize soil erosion.

4.2. Geologic Formations

Transco retained Civil & Environmental Consultants, Inc. (CEC) of Pittsburgh, PA to perform a geohazard assessment, the following is provided from their 2020 report. Transco utilized United States Geological Survey (USGS), Geologic Map of Pennsylvania - Map 1, dated 1980 (online), to evaluate geologic hazards on the Project. The desktop analysis completed for

the Project by CEC revealed that the Delaware River Regulator does not cross any known, mapped, or inferred faults. No mines were identified in the site vicinity. Karst features were identified in the vicinity of the site. The analysis outlined that Delaware River Regulator lies within a zone of low landslide incidence and susceptibility.

Due to the low landslide incidence and susceptibility, a Geological Hazard Assessment and Mitigation Plan was completed by CEC and is submitted with this application (Attachment B). The Geological Hazard Assessment and Mitigation Plan identifies appropriate best management practices to avoid and mitigate for conditions encountered during construction.

5. Characterizations of Earth Disturbance Activities, Including Past, Present, and Proposed Land Uses (NOI Checklist Item 3.c)

The existing Delaware River Regulator component of the Project is located in Lower Mount Bethel Township, Northampton County. The Project at Delaware River Regulator involves facility modifications to upsize the existing control valves. Transco will use and implement the practices, measures, and details to control soil erosion and off-site sedimentation during construction. Using data taken from Google Earth and Multi-Resolution Land Characteristics (MRLC) Consortium website (<https://www.mrlc.gov/viewer/>), it appears that for the past few decades the land has been utilized as a regulator station site and will continue as such.

6. Erosion and Sediment Control Best Management Practices (NOI Checklist Item 3.F)

Various erosion and sediment control measures will be used during the modification of Delaware River Regulator. E&S BMPs proposed to be used at the site to control soil erosion and sediment pollution are listed below. Details of BMPs proposed to be used at the Project location are included in the Erosion and Sedimentation Control Plan sheets. BMP's listed will be used at the Project location at the discretion of the environmental inspector, when found necessary to comply with 25 PA Code Chapter 102 and to adequately address potential erosion and sediment control issues.

Rock Construction Entrances / Street Sweeping

Rock construction entrances shall be installed whenever sediment tracking onto road surfaces is a potential or if required by the county conservation district or other agency. Soil erosion control measures shall be installed if required and as needed. In special protection watersheds, either a 100' long rock construction entrance or a standard 50' rock construction entrance with a wash rack will be used at the construction entrance to wash construction vehicle wheels before they enter the public roadway. The wash rack will discharge to a 24" (min.) compost

filter sock. Thickness of the rock construction entrance shall be constantly maintained to the specified dimensions by adding rock. Sediment deposited on roadways shall be removed and returned to the construction site immediately.

If a standard rock construction entrance is unfeasible, public street sweeping with a vacuum sweeper and rolling of dirt and gravel roads will occur at the end of each workday (or more frequently as needed) and/or manual cleaning of tires prior to site egress may also be implemented. Vacuum sweepers can remove accumulated sediment from streets before it is washed into surface waters. Tires can be cleaned off manually with a broom prior to exiting. Rolling of dirt roads can stabilize areas affected by tracked mud.

Compost Filter Sock

Compost filter socks shall be placed downslope of disturbed areas to serve as a sediment barrier and filter. Filter sock shall be placed at existing level grade, parallel to contours, with both ends of the sock extended up slope at a 45-degree angle. Socks can be used on both steep and rocky slopes. Socks can range in size from 12" to 32" diameter depending on the site conditions. The maximum permissible slope lengths above compost filter socks will be used to determine the sizes of compost filter.

Safety Fence

Safety fence shall be installed to protect sensitive environmental features as depicted on the plan drawings. The fencing shall remain in place during all phases of construction.

Inlet Filter Bags

Inlet filter bags are used as protection at the entrance of catch basins for trapping particles unable to pass through a No. 40 sieve. Berms shall be required for installation of inlet filter bags.

Erosion Control Blankets

A suitable erosion control blanket or soil stabilizer shall be used wherever earth disturbance occurs within 50' of surface waters or 100' of special protection water, especially if site conditions make use of conventional erosion and sedimentation (E&S) BMPs difficult. Erosion control blankets should be used on finished slopes greater than 3:1.

Pumped Water Filter Bag

Filter bags shall be placed in well-vegetated, grassy areas and discharge onto stable, erosion resistant areas and staked if the slope is greater than 5 percent. In the event that this is not possible, a geotextile path will be provided. A compost filter sock shall be placed below the

filter bag when placed within 50' of streams or wetlands located within a HQ/EV watershed.

7. Recycling and Disposal of Materials (NOI Checklist Item 3.k)

The restoration of the facility will require the removal of the temporary materials. The temporary materials include, but may not be limited to, stone surfaces and associated geotextiles. The contractors are required to discard of these materials at suitable disposal or recycling sites and in compliance with local, state, and federal regulations.

Contractors are required to inventory and manage their construction site materials. The goal is to be aware of the materials on-site, ensure they are properly maintained, used, and disposed of, and to make sure the materials are not exposed to stormwater. The following materials or substances are expected to be present on-site during construction (Note: this list is not an all-inclusive list and the materials management plan can be modified to address additional materials used on-site):

- Acids
- Detergents
- Fertilizers (nitrogen/phosphorus)
- Hydroseeding mixtures
- Petroleum based products
- Sanitary wastes
- Soil stabilization additives
- Solder
- Solvents

These materials must be stored as appropriate and shall not contact storm or non-stormwater discharges. Contractor shall provide a weatherproof container to store chemicals or erodible substances that must be kept on the site. Contractor is responsible for reading, maintaining, and making employees and subcontractors aware of Safety Data Sheets (SDSs).

8. Thermal Impacts (NOI Checklist Item 3.m)

Due to the overall nature of the Project, thermal impacts to surface waters are not anticipated. The primary means to address thermal impacts on this Project is to limit the size and duration of exposed earth.

9. Antidegradation Requirements (NOI Checklist Item 3.p)

A hydraulic analysis was conducted to determine the location of Delaware River Regulator along Transco's existing pipeline system. The defined hydraulic range for Delaware River Regulator is not located within an exceptional value (EV) watershed. Transco used various criteria

to evaluate parcels suitable for a compressor station within the hydraulic range required to meet the purpose and need of the project. The criteria for parcel evaluation included but was not limited to existing conditions, resource impacts, workspace, and reasonable availability.

Earth disturbance will be minimized to the extent practical and will be phased or sequenced to only disturbed portions that are necessary for the specific scope of work. Where possible, the LOD was decreased to avoid additional disturbance to the extent practical.

10. Riparian Buffers (NOI Checklist Item 3.o)

Delaware River Regulator is not located within a riparian buffer.

11. Project Site Runoff (NOI Checklist Item 3.d)

The construction of Delaware River Regulator will not increase the volume of stormwater runoff, there is no increase in the type and size of the impervious area.

12. Site Restoration Plan

12.1. Previous Land Use

Using data taken from Google Earth and Multi-Resolution Land Characteristics (MRLC) Consortium website (<https://www.mrlc.gov/viewer/>), it appears that land use for the past few decades has been as a regulator station.

12.2. Disturbance Activities, Changes to Permanent Topographic Land Cover

The Delaware River Regulator portion of the Project will involve the facility modifications to upsize the existing control valves. Transco will use and implement the practices, measures, and details to control soil erosion and off-site sedimentation during construction.

12.3. Restoration Measures

Stormwater controls which will be installed during construction have been designed to avoid impacts to natural drainage features. These controls will only have temporary impacts while installed and will be removed once the site is stabilized with vegetation. Minimal impacts to wetland resources are anticipated as these functions are generally limited when compared to watercourses.

Construction debris will be removed from construction work areas unless the landowner or land managing agency approves leaving materials onsite for beneficial reuse, stabilization, or habitat restoration. The disturbed area will be vegetated and rocks will be removed. Temporary sediment barriers will be removed and replaced by permanent erosion control measures or when

revegetation is successful.

Soil Compaction Measures

E&S BMPs will not be over-compacted. Should they become over-compacted, the soil will be de-compacted. Also, any areas that do not successfully revegetate because of compaction will also be de-compacted and then reseeded.

Revegetation Plan and Procedures

The construction site should be stabilized as soon as possible after completion. Establishment of final cover must be initiated no later than seven days after reaching final grade. Temporary erosion and sedimentation control BMPs can be removed when the site meets final stabilization. Final stabilization means that all soil-disturbing activities are completed and that either a permanent vegetative cover with a density of 70% or greater has been established or that the surface has been stabilized by hard cover such as pavement or buildings. It should be noted that the 70% requirement refers to the total area vegetated and not just a percent of the site.

12.4. Maintenance and Evaluation for Effectiveness

Follow-up inspections of disturbed areas will be conducted as necessary, to determine the success of revegetation. At a minimum, conduct inspections after the first and second growing seasons. Revegetation in non-agricultural areas shall be considered successful if upon visual survey the density and cover of non-nuisance vegetation are similar in density and cover to adjacent undisturbed lands. Revegetation efforts will continue until revegetation is successful.

Vegetated areas will be inspected weekly and after runoff events until permanent vegetation is achieved. Once the vegetation is established, inspections of health, diversity, and density will be performed at least twice per year, during both the growing and non-growing season. Vegetative cover will be sustained at 85% and reestablished if damage greater than 50% is observed. Damaged BMPs will be repaired as soon as possible upon discovery. Repairs will be made to restore damaged BMPs to their original design condition.

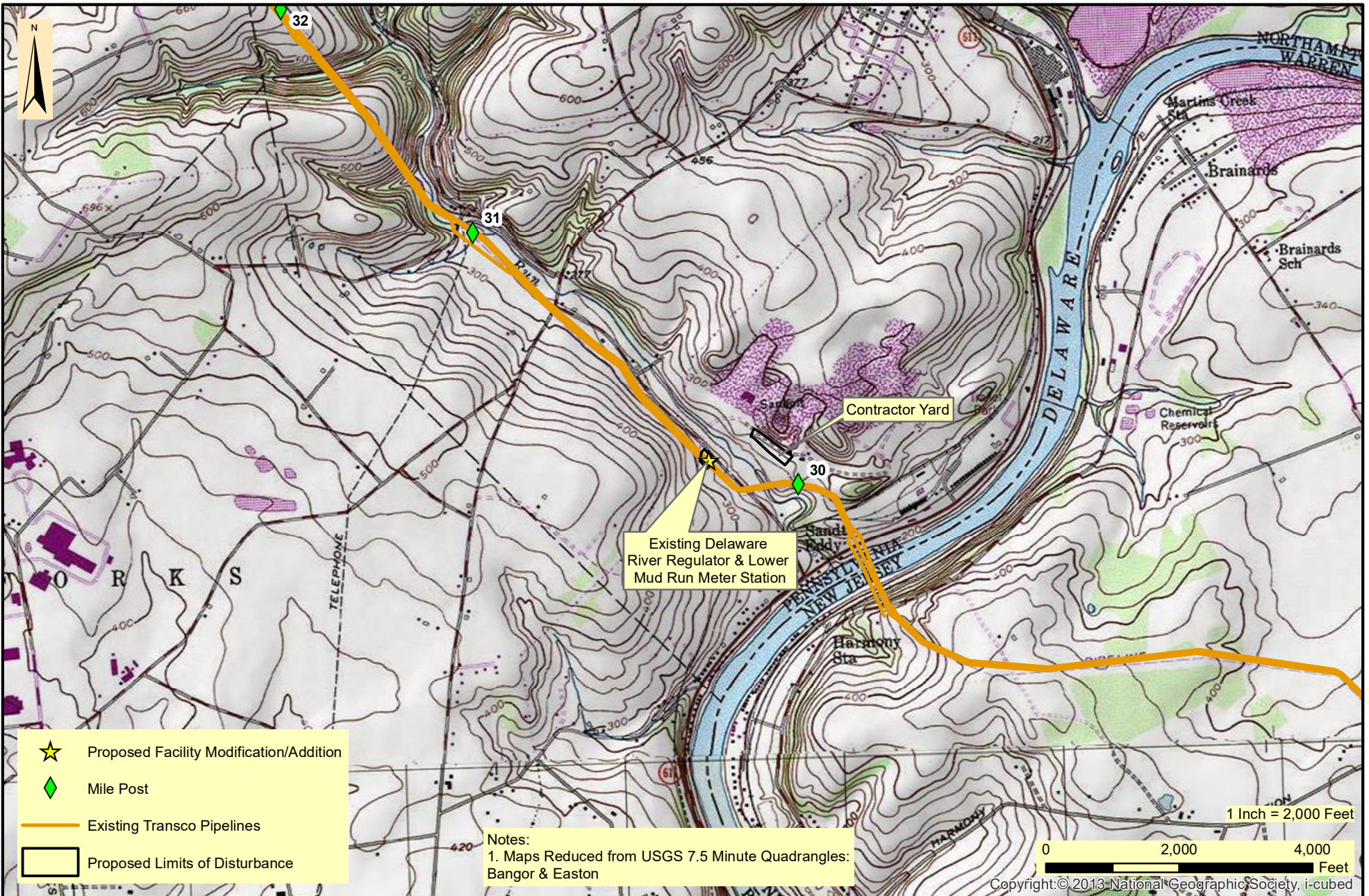
Transco will limit routine vegetation mowing or clearing within wetlands and adjacent to waterbodies. Transco will not use herbicides or pesticides in or within 100' of a waterbody except as allowed by the appropriate land management or state agency.




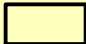
Contractor shall provide a weatherproof container to store chemicals or erodible substances that must be kept on the site. Contractor is responsible for reading, maintaining, and making employees and subcontractors aware of Safety Data Sheets (SDSs).

13. The Erosion and Sediment Control Plan Shall be Prepared by a Person Trained and Experienced in Erosion Control Methods and Techniques

These plans and narrative were prepared by Kevin C. Clark, PE (BAI Group, LLC) of State College, PA in accordance with the Pennsylvania Department of Environmental Protection Erosion and Sediment Pollution Control Program Manual, March 2012. Plan preparer's resume is provided in Attachment C of the ESCGP-3 permit package).

ATTACHMENT 1
PROJECT LOCATION MAP



-  Proposed Facility Modification/Addition
-  Mile Post
-  Existing Transco Pipelines
-  Proposed Limits of Disturbance

Notes:
 1. Maps Reduced from USGS 7.5 Minute Quadrangles:
 Bangor & Easton

1 Inch = 2,000 Feet
 0 2,000 4,000 Feet
 Copyright: © 2013 National Geographic Society, i-cubed



TRANSCONTINENTAL GAS PIPE LINE COMPANY, LLC
 REGIONAL ENERGY ACCESS EXPANSION PROJECT
 EXISTING DELAWARE RIVER REGULATOR AND LOWER MUD RUN METER STATION
PROJECT LOCATION MAP

LOWER MT BETHEL TOWNSHIP

NORTHAMPTON COUNTY

PENNSYLVANIA

Date:
 3/26/2021
 Drawn By:
 FTN
 Figure Number:
 DEL/LMR-1

ATTACHMENT 2
SOILS MAP AND REPORT



United States
Department of
Agriculture

NRCS

Natural
Resources
Conservation
Service

A product of the National
Cooperative Soil Survey,
a joint effort of the United
States Department of
Agriculture and other
Federal agencies, State
agencies including the
Agricultural Experiment
Stations, and local
participants

Custom Soil Resource Report for Northampton County, Pennsylvania



Preface

Soil surveys contain information that affects land use planning in survey areas. They highlight soil limitations that affect various land uses and provide information about the properties of the soils in the survey areas. Soil surveys are designed for many different users, including farmers, ranchers, foresters, agronomists, urban planners, community officials, engineers, developers, builders, and home buyers. Also, conservationists, teachers, students, and specialists in recreation, waste disposal, and pollution control can use the surveys to help them understand, protect, or enhance the environment.

Various land use regulations of Federal, State, and local governments may impose special restrictions on land use or land treatment. Soil surveys identify soil properties that are used in making various land use or land treatment decisions. The information is intended to help the land users identify and reduce the effects of soil limitations on various land uses. The landowner or user is responsible for identifying and complying with existing laws and regulations.

Although soil survey information can be used for general farm, local, and wider area planning, onsite investigation is needed to supplement this information in some cases. Examples include soil quality assessments (<http://www.nrcs.usda.gov/wps/portal/nrcs/main/soils/health/>) and certain conservation and engineering applications. For more detailed information, contact your local USDA Service Center (<https://offices.sc.egov.usda.gov/locator/app?agency=nrcs>) or your NRCS State Soil Scientist (http://www.nrcs.usda.gov/wps/portal/nrcs/detail/soils/contactus/?cid=nrcs142p2_053951).

Great differences in soil properties can occur within short distances. Some soils are seasonally wet or subject to flooding. Some are too unstable to be used as a foundation for buildings or roads. Clayey or wet soils are poorly suited to use as septic tank absorption fields. A high water table makes a soil poorly suited to basements or underground installations.

The National Cooperative Soil Survey is a joint effort of the United States Department of Agriculture and other Federal agencies, State agencies including the Agricultural Experiment Stations, and local agencies. The Natural Resources Conservation Service (NRCS) has leadership for the Federal part of the National Cooperative Soil Survey.

Information about soils is updated periodically. Updated information is available through the NRCS Web Soil Survey, the site for official soil survey information.

The U.S. Department of Agriculture (USDA) prohibits discrimination in all its programs and activities on the basis of race, color, national origin, age, disability, and where applicable, sex, marital status, familial status, parental status, religion, sexual orientation, genetic information, political beliefs, reprisal, or because all or a part of an individual's income is derived from any public assistance program. (Not all prohibited bases apply to all programs.) Persons with disabilities who require

alternative means for communication of program information (Braille, large print, audiotape, etc.) should contact USDA's TARGET Center at (202) 720-2600 (voice and TDD). To file a complaint of discrimination, write to USDA, Director, Office of Civil Rights, 1400 Independence Avenue, S.W., Washington, D.C. 20250-9410 or call (800) 795-3272 (voice) or (202) 720-6382 (TDD). USDA is an equal opportunity provider and employer.

Contents

Preface	2
How Soil Surveys Are Made	5
Soil Map	8
Soil Map.....	9
Legend.....	10
Map Unit Legend.....	11
Map Unit Descriptions.....	11
Northampton County, Pennsylvania.....	13
BkD—Berks-Weikert complex, 15 to 25 percent slopes.....	13
DvC—Duffield-Ryder silt loams, 8 to 15 percent slopes.....	15
Ho—Holly silt loam.....	17
PQ—Pits, quarry.....	18
WaC—Washington silt loam, 8 to 15 percent slopes.....	19
References	21

How Soil Surveys Are Made

Soil surveys are made to provide information about the soils and miscellaneous areas in a specific area. They include a description of the soils and miscellaneous areas and their location on the landscape and tables that show soil properties and limitations affecting various uses. Soil scientists observed the steepness, length, and shape of the slopes; the general pattern of drainage; the kinds of crops and native plants; and the kinds of bedrock. They observed and described many soil profiles. A soil profile is the sequence of natural layers, or horizons, in a soil. The profile extends from the surface down into the unconsolidated material in which the soil formed or from the surface down to bedrock. The unconsolidated material is devoid of roots and other living organisms and has not been changed by other biological activity.

Currently, soils are mapped according to the boundaries of major land resource areas (MLRAs). MLRAs are geographically associated land resource units that share common characteristics related to physiography, geology, climate, water resources, soils, biological resources, and land uses (USDA, 2006). Soil survey areas typically consist of parts of one or more MLRA.

The soils and miscellaneous areas in a survey area occur in an orderly pattern that is related to the geology, landforms, relief, climate, and natural vegetation of the area. Each kind of soil and miscellaneous area is associated with a particular kind of landform or with a segment of the landform. By observing the soils and miscellaneous areas in the survey area and relating their position to specific segments of the landform, a soil scientist develops a concept, or model, of how they were formed. Thus, during mapping, this model enables the soil scientist to predict with a considerable degree of accuracy the kind of soil or miscellaneous area at a specific location on the landscape.

Commonly, individual soils on the landscape merge into one another as their characteristics gradually change. To construct an accurate soil map, however, soil scientists must determine the boundaries between the soils. They can observe only a limited number of soil profiles. Nevertheless, these observations, supplemented by an understanding of the soil-vegetation-landscape relationship, are sufficient to verify predictions of the kinds of soil in an area and to determine the boundaries.

Soil scientists recorded the characteristics of the soil profiles that they studied. They noted soil color, texture, size and shape of soil aggregates, kind and amount of rock fragments, distribution of plant roots, reaction, and other features that enable them to identify soils. After describing the soils in the survey area and determining their properties, the soil scientists assigned the soils to taxonomic classes (units). Taxonomic classes are concepts. Each taxonomic class has a set of soil characteristics with precisely defined limits. The classes are used as a basis for comparison to classify soils systematically. Soil taxonomy, the system of taxonomic classification used in the United States, is based mainly on the kind and character of soil properties and the arrangement of horizons within the profile. After the soil

Custom Soil Resource Report

scientists classified and named the soils in the survey area, they compared the individual soils with similar soils in the same taxonomic class in other areas so that they could confirm data and assemble additional data based on experience and research.

The objective of soil mapping is not to delineate pure map unit components; the objective is to separate the landscape into landforms or landform segments that have similar use and management requirements. Each map unit is defined by a unique combination of soil components and/or miscellaneous areas in predictable proportions. Some components may be highly contrasting to the other components of the map unit. The presence of minor components in a map unit in no way diminishes the usefulness or accuracy of the data. The delineation of such landforms and landform segments on the map provides sufficient information for the development of resource plans. If intensive use of small areas is planned, onsite investigation is needed to define and locate the soils and miscellaneous areas.

Soil scientists make many field observations in the process of producing a soil map. The frequency of observation is dependent upon several factors, including scale of mapping, intensity of mapping, design of map units, complexity of the landscape, and experience of the soil scientist. Observations are made to test and refine the soil-landscape model and predictions and to verify the classification of the soils at specific locations. Once the soil-landscape model is refined, a significantly smaller number of measurements of individual soil properties are made and recorded. These measurements may include field measurements, such as those for color, depth to bedrock, and texture, and laboratory measurements, such as those for content of sand, silt, clay, salt, and other components. Properties of each soil typically vary from one point to another across the landscape.

Observations for map unit components are aggregated to develop ranges of characteristics for the components. The aggregated values are presented. Direct measurements do not exist for every property presented for every map unit component. Values for some properties are estimated from combinations of other properties.

While a soil survey is in progress, samples of some of the soils in the area generally are collected for laboratory analyses and for engineering tests. Soil scientists interpret the data from these analyses and tests as well as the field-observed characteristics and the soil properties to determine the expected behavior of the soils under different uses. Interpretations for all of the soils are field tested through observation of the soils in different uses and under different levels of management. Some interpretations are modified to fit local conditions, and some new interpretations are developed to meet local needs. Data are assembled from other sources, such as research information, production records, and field experience of specialists. For example, data on crop yields under defined levels of management are assembled from farm records and from field or plot experiments on the same kinds of soil.

Predictions about soil behavior are based not only on soil properties but also on such variables as climate and biological activity. Soil conditions are predictable over long periods of time, but they are not predictable from year to year. For example, soil scientists can predict with a fairly high degree of accuracy that a given soil will have a high water table within certain depths in most years, but they cannot predict that a high water table will always be at a specific level in the soil on a specific date.

After soil scientists located and identified the significant natural bodies of soil in the survey area, they drew the boundaries of these bodies on aerial photographs and

Custom Soil Resource Report

identified each as a specific map unit. Aerial photographs show trees, buildings, fields, roads, and rivers, all of which help in locating boundaries accurately.

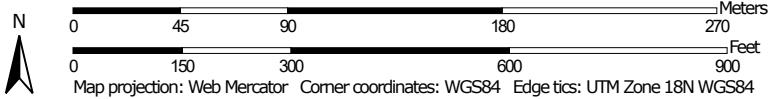
Soil Map

The soil map section includes the soil map for the defined area of interest, a list of soil map units on the map and extent of each map unit, and cartographic symbols displayed on the map. Also presented are various metadata about data used to produce the map, and a description of each soil map unit.

Custom Soil Resource Report Soil Map




Map Scale: 1:3,170 if printed on A landscape (11" x 8.5") sheet.



MAP LEGEND

Area of Interest (AOI)

 Area of Interest (AOI)

Soils

 Soil Map Unit Polygons

 Soil Map Unit Lines


 Soil Map Unit Points

Special Point Features






-  Blowout
-  Borrow Pit
-  Clay Spot
-  Closed Depression
-  Gravel Pit
-  Gravelly Spot
-  Landfill
-  Lava Flow
-  Marsh or swamp
-  Mine or Quarry
-  Miscellaneous Water
-  Perennial Water
-  Rock Outcrop
-  Saline Spot
-  Sandy Spot
-  Severely Eroded Spot
-  Sinkhole
-  Slide or Slip
-  Sodic Spot

-  Spoil Area
-  Stony Spot
-  Very Stony Spot
-  Wet Spot
-  Other
-  Special Line Features

Water Features

 Streams and Canals

Transportation

-  Rails
-  Interstate Highways
-  US Routes
-  Major Roads
-  Local Roads

Background

 Aerial Photography

MAP INFORMATION

The soil surveys that comprise your AOI were mapped at 1:12,000.

Warning: Soil Map may not be valid at this scale.

Enlargement of maps beyond the scale of mapping can cause misunderstanding of the detail of mapping and accuracy of soil line placement. The maps do not show the small areas of contrasting soils that could have been shown at a more detailed scale.

Please rely on the bar scale on each map sheet for map measurements.

Source of Map: Natural Resources Conservation Service
 Web Soil Survey URL:
 Coordinate System: Web Mercator (EPSG:3857)

Maps from the Web Soil Survey are based on the Web Mercator projection, which preserves direction and shape but distorts distance and area. A projection that preserves area, such as the Albers equal-area conic projection, should be used if more accurate calculations of distance or area are required.

This product is generated from the USDA-NRCS certified data as of the version date(s) listed below.

Soil Survey Area: Northampton County, Pennsylvania
 Survey Area Data: Version 13, Jun 5, 2020

Soil map units are labeled (as space allows) for map scales 1:50,000 or larger.

Date(s) aerial images were photographed: Mar 31, 2014—Apr 2, 2017

The orthophoto or other base map on which the soil lines were compiled and digitized probably differs from the background imagery displayed on these maps. As a result, some minor shifting of map unit boundaries may be evident.

Map Unit Legend

Map Unit Symbol	Map Unit Name	Acres in AOI	Percent of AOI
BkD	Berks-Weikert complex, 15 to 25 percent slopes	3.0	13.0%
DvC	Duffield-Ryder silt loams, 8 to 15 percent slopes	2.6	11.2%
Ho	Holly silt loam	4.3	18.6%
PQ	Pits, quarry	11.1	48.5%
WaC	Washington silt loam, 8 to 15 percent slopes	2.0	8.7%
Totals for Area of Interest		22.9	100.0%

Map Unit Descriptions

The map units delineated on the detailed soil maps in a soil survey represent the soils or miscellaneous areas in the survey area. The map unit descriptions, along with the maps, can be used to determine the composition and properties of a unit.

A map unit delineation on a soil map represents an area dominated by one or more major kinds of soil or miscellaneous areas. A map unit is identified and named according to the taxonomic classification of the dominant soils. Within a taxonomic class there are precisely defined limits for the properties of the soils. On the landscape, however, the soils are natural phenomena, and they have the characteristic variability of all natural phenomena. Thus, the range of some observed properties may extend beyond the limits defined for a taxonomic class. Areas of soils of a single taxonomic class rarely, if ever, can be mapped without including areas of other taxonomic classes. Consequently, every map unit is made up of the soils or miscellaneous areas for which it is named and some minor components that belong to taxonomic classes other than those of the major soils.

Most minor soils have properties similar to those of the dominant soil or soils in the map unit, and thus they do not affect use and management. These are called noncontrasting, or similar, components. They may or may not be mentioned in a particular map unit description. Other minor components, however, have properties and behavioral characteristics divergent enough to affect use or to require different management. These are called contrasting, or dissimilar, components. They generally are in small areas and could not be mapped separately because of the scale used. Some small areas of strongly contrasting soils or miscellaneous areas are identified by a special symbol on the maps. If included in the database for a given area, the contrasting minor components are identified in the map unit descriptions along with some characteristics of each. A few areas of minor components may not have been observed, and consequently they are not mentioned in the descriptions, especially where the pattern was so complex that it was impractical to make enough observations to identify all the soils and miscellaneous areas on the landscape.

Custom Soil Resource Report

The presence of minor components in a map unit in no way diminishes the usefulness or accuracy of the data. The objective of mapping is not to delineate pure taxonomic classes but rather to separate the landscape into landforms or landform segments that have similar use and management requirements. The delineation of such segments on the map provides sufficient information for the development of resource plans. If intensive use of small areas is planned, however, onsite investigation is needed to define and locate the soils and miscellaneous areas.

An identifying symbol precedes the map unit name in the map unit descriptions. Each description includes general facts about the unit and gives important soil properties and qualities.

Soils that have profiles that are almost alike make up a *soil series*. Except for differences in texture of the surface layer, all the soils of a series have major horizons that are similar in composition, thickness, and arrangement.

Soils of one series can differ in texture of the surface layer, slope, stoniness, salinity, degree of erosion, and other characteristics that affect their use. On the basis of such differences, a soil series is divided into *soil phases*. Most of the areas shown on the detailed soil maps are phases of soil series. The name of a soil phase commonly indicates a feature that affects use or management. For example, Alpha silt loam, 0 to 2 percent slopes, is a phase of the Alpha series.

Some map units are made up of two or more major soils or miscellaneous areas. These map units are complexes, associations, or undifferentiated groups.

A *complex* consists of two or more soils or miscellaneous areas in such an intricate pattern or in such small areas that they cannot be shown separately on the maps. The pattern and proportion of the soils or miscellaneous areas are somewhat similar in all areas. Alpha-Beta complex, 0 to 6 percent slopes, is an example.

An *association* is made up of two or more geographically associated soils or miscellaneous areas that are shown as one unit on the maps. Because of present or anticipated uses of the map units in the survey area, it was not considered practical or necessary to map the soils or miscellaneous areas separately. The pattern and relative proportion of the soils or miscellaneous areas are somewhat similar. Alpha-Beta association, 0 to 2 percent slopes, is an example.

An *undifferentiated group* is made up of two or more soils or miscellaneous areas that could be mapped individually but are mapped as one unit because similar interpretations can be made for use and management. The pattern and proportion of the soils or miscellaneous areas in a mapped area are not uniform. An area can be made up of only one of the major soils or miscellaneous areas, or it can be made up of all of them. Alpha and Beta soils, 0 to 2 percent slopes, is an example.

Some surveys include *miscellaneous areas*. Such areas have little or no soil material and support little or no vegetation. Rock outcrop is an example.

Northampton County, Pennsylvania

BkD—Berks-Weikert complex, 15 to 25 percent slopes

Map Unit Setting

National map unit symbol: 2wkdr
Elevation: 230 to 1,240 feet
Mean annual precipitation: 37 to 50 inches
Mean annual air temperature: 50 to 55 degrees F
Frost-free period: 155 to 177 days
Farmland classification: Not prime farmland

Map Unit Composition

Berks and similar soils: 65 percent
Weikert and similar soils: 25 percent
Minor components: 10 percent
Estimates are based on observations, descriptions, and transects of the mapunit.

Description of Berks

Setting

Landform: Ridges
Landform position (two-dimensional): Backslope, shoulder, summit
Landform position (three-dimensional): Side slope
Down-slope shape: Convex, linear
Across-slope shape: Convex, concave
Parent material: Residuum weathered from shale and siltstone and/or fine grained sandstone

Typical profile

Ap - 0 to 7 inches: channery loam
Bw1 - 7 to 15 inches: very channery silt loam
Bw2 - 15 to 22 inches: very channery silt loam
C - 22 to 37 inches: extremely channery silt loam
R - 37 to 47 inches: bedrock

Properties and qualities

Slope: 15 to 25 percent
Depth to restrictive feature: 20 to 40 inches to lithic bedrock
Drainage class: Well drained
Runoff class: High
Capacity of the most limiting layer to transmit water (Ksat): Moderately high to high (0.20 to 5.95 in/hr)
Depth to water table: More than 80 inches
Frequency of flooding: None
Frequency of ponding: None
Calcium carbonate, maximum content: 1 percent
Gypsum, maximum content: 1 percent
Maximum salinity: Nonsaline (0.0 to 1.0 mmhos/cm)
Sodium adsorption ratio, maximum: 1.0
Available water capacity: Low (about 3.1 inches)

Interpretive groups

Land capability classification (irrigated): None specified
Land capability classification (nonirrigated): 4e

Custom Soil Resource Report

Hydrologic Soil Group: B
Hydric soil rating: No

Description of Weikert

Setting

Landform: Ridges
Landform position (two-dimensional): Summit, shoulder, backslope
Landform position (three-dimensional): Side slope
Down-slope shape: Convex, linear
Across-slope shape: Convex, concave
Parent material: Gray and brown acid residuum weathered from shale and siltstone and/or fine grained sandstone

Typical profile

Ap - 0 to 7 inches: channery silt loam
Bw - 7 to 14 inches: very channery silt loam
C - 14 to 18 inches: extremely channery silt loam
R - 18 to 28 inches: bedrock

Properties and qualities

Slope: 15 to 25 percent
Depth to restrictive feature: 10 to 20 inches to lithic bedrock
Drainage class: Well drained
Runoff class: Low
Capacity of the most limiting layer to transmit water (Ksat): Moderately high to high (0.57 to 5.95 in/hr)
Depth to water table: More than 80 inches
Frequency of flooding: None
Frequency of ponding: None
Maximum salinity: Nonsaline (0.0 to 1.0 mmhos/cm)
Available water capacity: Very low (about 1.9 inches)

Interpretive groups

Land capability classification (irrigated): None specified
Land capability classification (nonirrigated): 6e
Hydrologic Soil Group: D
Other vegetative classification: Droughty Shales (SD2)
Hydric soil rating: No

Minor Components

Comly

Percent of map unit: 6 percent
Landform: Ridges
Landform position (two-dimensional): Backslope, footslope
Landform position (three-dimensional): Side slope
Down-slope shape: Linear, concave
Across-slope shape: Concave
Hydric soil rating: No

Brinkerton

Percent of map unit: 4 percent
Landform: Ridges
Landform position (two-dimensional): Backslope, footslope
Landform position (three-dimensional): Side slope
Down-slope shape: Linear, concave

Custom Soil Resource Report

Across-slope shape: Concave
Hydric soil rating: Yes

DvC—Duffield-Ryder silt loams, 8 to 15 percent slopes

Map Unit Setting

National map unit symbol: 23dvt
Elevation: 200 to 1,500 feet
Mean annual precipitation: 32 to 50 inches
Mean annual air temperature: 46 to 57 degrees F
Frost-free period: 120 to 200 days
Farmland classification: Farmland of statewide importance

Map Unit Composition

Duffield and similar soils: 60 percent
Ryder and similar soils: 30 percent
Minor components: 10 percent
Estimates are based on observations, descriptions, and transects of the mapunit.

Description of Duffield

Setting

Landform: Hills
Landform position (two-dimensional): Shoulder
Landform position (three-dimensional): Interfluve
Down-slope shape: Linear, convex
Across-slope shape: Linear, convex
Parent material: Residuum weathered from limestone and siltstone

Typical profile

Ap - 0 to 10 inches: silt loam
Bt - 10 to 53 inches: silty clay loam
C - 53 to 72 inches: silt loam

Properties and qualities

Slope: 8 to 15 percent
Depth to restrictive feature: 48 to 120 inches to lithic bedrock
Drainage class: Well drained
Runoff class: Medium
Capacity of the most limiting layer to transmit water (Ksat): Moderately high to high
(0.60 to 2.00 in/hr)
Depth to water table: More than 80 inches
Frequency of flooding: None
Frequency of ponding: None
Available water capacity: High (about 10.4 inches)

Interpretive groups

Land capability classification (irrigated): None specified
Land capability classification (nonirrigated): 3e
Hydrologic Soil Group: B

Custom Soil Resource Report

Hydric soil rating: No

Description of Ryder

Setting

Landform: Hills

Landform position (two-dimensional): Summit, shoulder, backslope

Landform position (three-dimensional): Interfluve, side slope

Down-slope shape: Convex, linear

Across-slope shape: Linear, convex

Parent material: Residuum weathered from limestone

Typical profile

Ap - 0 to 8 inches: silt loam

Bt - 8 to 30 inches: silt loam

C - 30 to 38 inches: very channery silt loam

R - 38 to 48 inches: bedrock

Properties and qualities

Slope: 8 to 15 percent

Depth to restrictive feature: 24 to 40 inches to lithic bedrock

Drainage class: Well drained

Runoff class: Medium

Capacity of the most limiting layer to transmit water (Ksat): Moderately low to high
(0.06 to 2.00 in/hr)

Depth to water table: More than 80 inches

Frequency of flooding: None

Frequency of ponding: None

Available water capacity: Low (about 5.8 inches)

Interpretive groups

Land capability classification (irrigated): None specified

Land capability classification (nonirrigated): 3e

Hydrologic Soil Group: B

Hydric soil rating: No

Minor Components

Clarksburg

Percent of map unit: 4 percent

Landform: Valley flats

Landform position (two-dimensional): Footslope, toeslope

Landform position (three-dimensional): Base slope

Down-slope shape: Concave, linear

Across-slope shape: Linear, concave

Hydric soil rating: No

Thorndale

Percent of map unit: 3 percent

Landform: Depressions

Landform position (two-dimensional): Footslope

Landform position (three-dimensional): Base slope

Down-slope shape: Concave, linear

Across-slope shape: Linear, concave

Hydric soil rating: Yes

Penlaw

Percent of map unit: 3 percent

Custom Soil Resource Report

Landform: Swales
Landform position (two-dimensional): Toeslope, footslope
Landform position (three-dimensional): Base slope
Down-slope shape: Concave
Across-slope shape: Concave
Hydric soil rating: No

Ho—Holly silt loam

Map Unit Setting

National map unit symbol: 17bn
Elevation: 100 to 1,300 feet
Mean annual precipitation: 30 to 50 inches
Mean annual air temperature: 46 to 55 degrees F
Frost-free period: 120 to 214 days
Farmland classification: Farmland of statewide importance

Map Unit Composition

Holly and similar soils: 94 percent
Minor components: 6 percent
Estimates are based on observations, descriptions, and transects of the mapunit.

Description of Holly

Setting

Landform: Flood plains
Landform position (two-dimensional): Toeslope
Landform position (three-dimensional): Base slope
Down-slope shape: Concave
Across-slope shape: Concave
Parent material: Alluvium derived from sandstone and shale

Typical profile

Ap - 0 to 7 inches: silt loam
Bg - 7 to 26 inches: silty clay loam
Cg - 26 to 44 inches: silty clay loam
2Cg - 44 to 62 inches: gravelly loamy sand

Properties and qualities

Slope: 0 to 3 percent
Depth to restrictive feature: More than 80 inches
Drainage class: Poorly drained
Runoff class: Negligible
Capacity of the most limiting layer to transmit water (Ksat): Moderately high to high
(0.20 to 2.00 in/hr)
Depth to water table: About 0 to 12 inches
Frequency of flooding: FrequentNone
Frequency of ponding: Occasional
Calcium carbonate, maximum content: 5 percent

Custom Soil Resource Report

Available water capacity: High (about 9.9 inches)

Interpretive groups

Land capability classification (irrigated): None specified

Land capability classification (nonirrigated): 3w

Hydrologic Soil Group: B/D

Hydric soil rating: Yes

Minor Components

Linden

Percent of map unit: 2 percent

Landform: Flood plains

Landform position (two-dimensional): Footslope

Landform position (three-dimensional): Tread

Down-slope shape: Concave, linear

Across-slope shape: Concave, linear

Hydric soil rating: No

Brinkerton

Percent of map unit: 2 percent

Landform: Depressions

Landform position (two-dimensional): Footslope

Landform position (three-dimensional): Base slope

Down-slope shape: Concave

Across-slope shape: Concave

Hydric soil rating: Yes

Gibraltar

Percent of map unit: 2 percent

Landform: Flood plains

Landform position (two-dimensional): Toeslope, footslope

Landform position (three-dimensional): Base slope

Down-slope shape: Linear, convex

Across-slope shape: Linear, convex

Hydric soil rating: No

PQ—Pits, quarry

Map Unit Setting

National map unit symbol: 17c6

Mean annual precipitation: 40 to 46 inches

Mean annual air temperature: 48 to 57 degrees F

Frost-free period: 161 to 215 days

Farmland classification: Not prime farmland

Map Unit Composition

Pits, quarries: 90 percent

Minor components: 10 percent

Estimates are based on observations, descriptions, and transects of the mapunit.

Description of Pits, Quarries

Setting

Landform: Hills
Down-slope shape: Linear, convex
Across-slope shape: Convex, linear
Parent material: Pits

Minor Components

Waste areas

Percent of map unit: 10 percent
Hydric soil rating: No

WaC—Washington silt loam, 8 to 15 percent slopes

Map Unit Setting

National map unit symbol: 17dw
Elevation: 160 to 1,500 feet
Mean annual precipitation: 34 to 50 inches
Mean annual air temperature: 46 to 57 degrees F
Frost-free period: 133 to 200 days
Farmland classification: Farmland of statewide importance

Map Unit Composition

Washington and similar soils: 90 percent
Minor components: 6 percent
Estimates are based on observations, descriptions, and transects of the mapunit.

Description of Washington

Setting

Landform: Valleys
Landform position (two-dimensional): Shoulder, backslope
Landform position (three-dimensional): Side slope
Down-slope shape: Linear
Across-slope shape: Linear
Parent material: Colluvium derived from limestone and/or old glacial drift

Typical profile

A1 - 0 to 9 inches: silt loam
B2 - 9 to 42 inches: clay loam
C3 - 42 to 61 inches: silt loam

Properties and qualities

Slope: 8 to 15 percent
Depth to restrictive feature: 60 to 99 inches to lithic bedrock
Drainage class: Well drained
Runoff class: Medium

Custom Soil Resource Report

Capacity of the most limiting layer to transmit water (Ksat): Moderately high to high
(0.60 to 2.00 in/hr)

Depth to water table: More than 80 inches

Frequency of flooding: None

Frequency of ponding: None

Available water capacity: High (about 10.2 inches)

Interpretive groups

Land capability classification (irrigated): None specified

Land capability classification (nonirrigated): 3e

Hydrologic Soil Group: B

Hydric soil rating: No

Minor Components

Clarksburg

Percent of map unit: 3 percent

Landform: Valley flats

Landform position (two-dimensional): Toeslope, footslope

Landform position (three-dimensional): Base slope

Down-slope shape: Concave, linear

Across-slope shape: Linear, concave

Hydric soil rating: No

Loudonville

Percent of map unit: 2 percent

Landform: Till plains

Landform position (three-dimensional): Head slope

Down-slope shape: Convex

Across-slope shape: Convex

Hydric soil rating: No

Ryder

Percent of map unit: 1 percent

Landform: Hills

Landform position (two-dimensional): Backslope, shoulder, summit

Landform position (three-dimensional): Side slope, interfluvium

Down-slope shape: Convex, linear

Across-slope shape: Linear, convex

Hydric soil rating: No

References

- American Association of State Highway and Transportation Officials (AASHTO). 2004. Standard specifications for transportation materials and methods of sampling and testing. 24th edition.
- American Society for Testing and Materials (ASTM). 2005. Standard classification of soils for engineering purposes. ASTM Standard D2487-00.
- Cowardin, L.M., V. Carter, F.C. Golet, and E.T. LaRoe. 1979. Classification of wetlands and deep-water habitats of the United States. U.S. Fish and Wildlife Service FWS/OBS-79/31.
- Federal Register. July 13, 1994. Changes in hydric soils of the United States.
- Federal Register. September 18, 2002. Hydric soils of the United States.
- Hurt, G.W., and L.M. Vasilas, editors. Version 6.0, 2006. Field indicators of hydric soils in the United States.
- National Research Council. 1995. Wetlands: Characteristics and boundaries.
- Soil Survey Division Staff. 1993. Soil survey manual. Soil Conservation Service. U.S. Department of Agriculture Handbook 18. http://www.nrcs.usda.gov/wps/portal/nrcs/detail/national/soils/?cid=nrcs142p2_054262
- Soil Survey Staff. 1999. Soil taxonomy: A basic system of soil classification for making and interpreting soil surveys. 2nd edition. Natural Resources Conservation Service, U.S. Department of Agriculture Handbook 436. http://www.nrcs.usda.gov/wps/portal/nrcs/detail/national/soils/?cid=nrcs142p2_053577
- Soil Survey Staff. 2010. Keys to soil taxonomy. 11th edition. U.S. Department of Agriculture, Natural Resources Conservation Service. http://www.nrcs.usda.gov/wps/portal/nrcs/detail/national/soils/?cid=nrcs142p2_053580
- Tiner, R.W., Jr. 1985. Wetlands of Delaware. U.S. Fish and Wildlife Service and Delaware Department of Natural Resources and Environmental Control, Wetlands Section.
- United States Army Corps of Engineers, Environmental Laboratory. 1987. Corps of Engineers wetlands delineation manual. Waterways Experiment Station Technical Report Y-87-1.
- United States Department of Agriculture, Natural Resources Conservation Service. National forestry manual. http://www.nrcs.usda.gov/wps/portal/nrcs/detail/soils/home/?cid=nrcs142p2_053374
- United States Department of Agriculture, Natural Resources Conservation Service. National range and pasture handbook. <http://www.nrcs.usda.gov/wps/portal/nrcs/detail/national/landuse/rangepasture/?cid=stelprdb1043084>

Custom Soil Resource Report

United States Department of Agriculture, Natural Resources Conservation Service. National soil survey handbook, title 430-VI. http://www.nrcs.usda.gov/wps/portal/nrcs/detail/soils/scientists/?cid=nrcs142p2_054242

United States Department of Agriculture, Natural Resources Conservation Service. 2006. Land resource regions and major land resource areas of the United States, the Caribbean, and the Pacific Basin. U.S. Department of Agriculture Handbook 296. http://www.nrcs.usda.gov/wps/portal/nrcs/detail/national/soils/?cid=nrcs142p2_053624

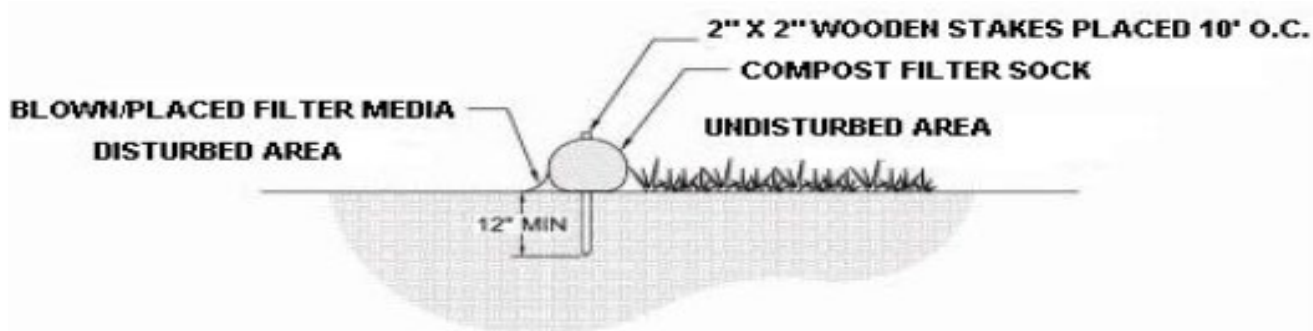
United States Department of Agriculture, Soil Conservation Service. 1961. Land capability classification. U.S. Department of Agriculture Handbook 210. http://www.nrcs.usda.gov/Internet/FSE_DOCUMENTS/nrcs142p2_052290.pdf

ATTACHMENT 3
E&SC PLAN BMP DESIGN WORKSHEETS
AND CALCULATIONS

SEDIMENT SOCK WORKSHEET #1

PROJECT NAME: Delaware River Regulator
 LOCATION: LOWER MT BETHEL TWP, NORTHAMPTON CTY, PA
 PREPARED BY: MM
 CHECKED BY: KCC

DATE: 3/22/2021
 DATE: 3/22/2021



SOCK No.	DIA (IN.)	LOCATION	SLOPE (%)	SLOPE LENGTH ABOVE BARRIER (FT)
1	12	SOUTHWEST SIDE OF STAGING AREA	1	168
2	12	SOUTHWEST SIDE OF STAGING AREA	2	123
3	12	SOUTHWEST SIDE OF STAGING AREA	2	138
4	12	SOUTHWEST SIDE OF STAGING AREA	2	154
5	12	SOUTHWEST SIDE OF STAGING AREA	2	161
6	12	SOUTHWEST SIDE OF STAGING AREA	2	163
7	12	SOUTHWEST SIDE OF STAGING AREA	2	165
8	12	WEST SIDE OF LOWER MUD RUN ROAD	10	140
9	12	WEST SIDE OF LOWER MUD RUN ROAD	10	301

**SECTION 2.5.2
DRAWINGS**