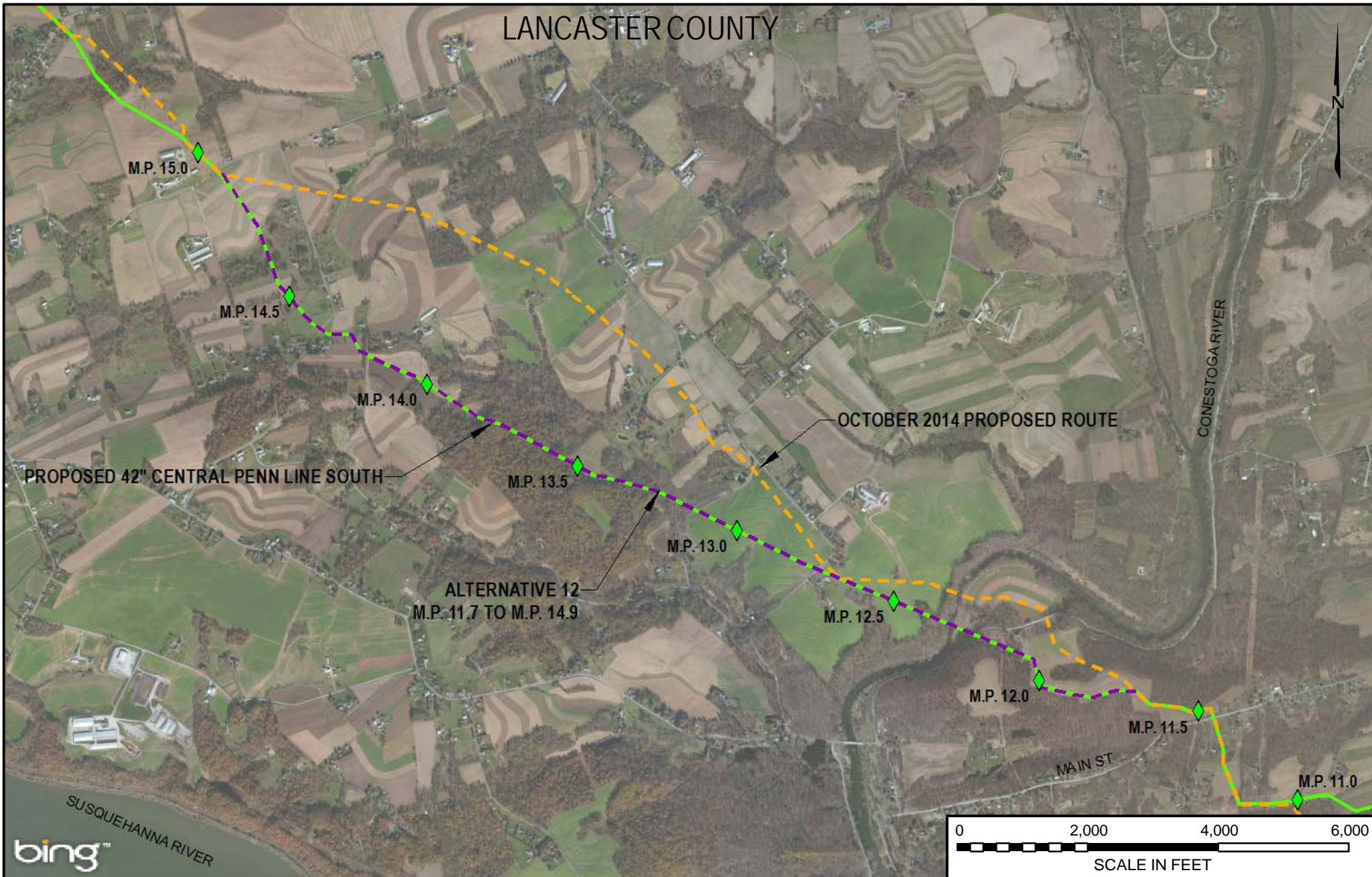


# LANCASTER COUNTY



- LEGEND**
- PROPOSED 42" CENTRAL PENN LINE SOUTH
  - CPL SOUTH ALTERNATIVE 12
  - OCTOBER 2014 PROPOSED ROUTE



DRAWING NO.	REFERENCE TITLE
	<b>FIGURE 10D-16</b>

**TRANSCONTINENTAL GAS PIPE LINE COMPANY LLC**  
**CPL SOUTH ALTERNATIVE 12**  
**ATLANTIC SUNRISE PROJECT**  
**PROPOSED 42" CENTRAL PENN LINE SOUTH**  
**M.P. 11.70 TO M.P. 14.90**  
**LANCASTER COUNTY, PENNSYLVANIA**



NO.	DATE	BY	REVISION DESCRIPTION	W.O. NO.	CHK.	APP.	DRAWN BY:	DATE:	ISSUE FOR BID:	SCALE:
0	3/31/15	JTN	ISSUED FOR FERC FILING	1161503	DP	MJH	JTN	3/10/15	ISSUE FOR CONSTRUCTION:	1" = 2000'
							MJH	3/10/15	DRAWING NUMBER:	REVISION: 0
							1161503	3:30 PM 3/23/2015	<b>F-AP-CPLS-A-71</b>	