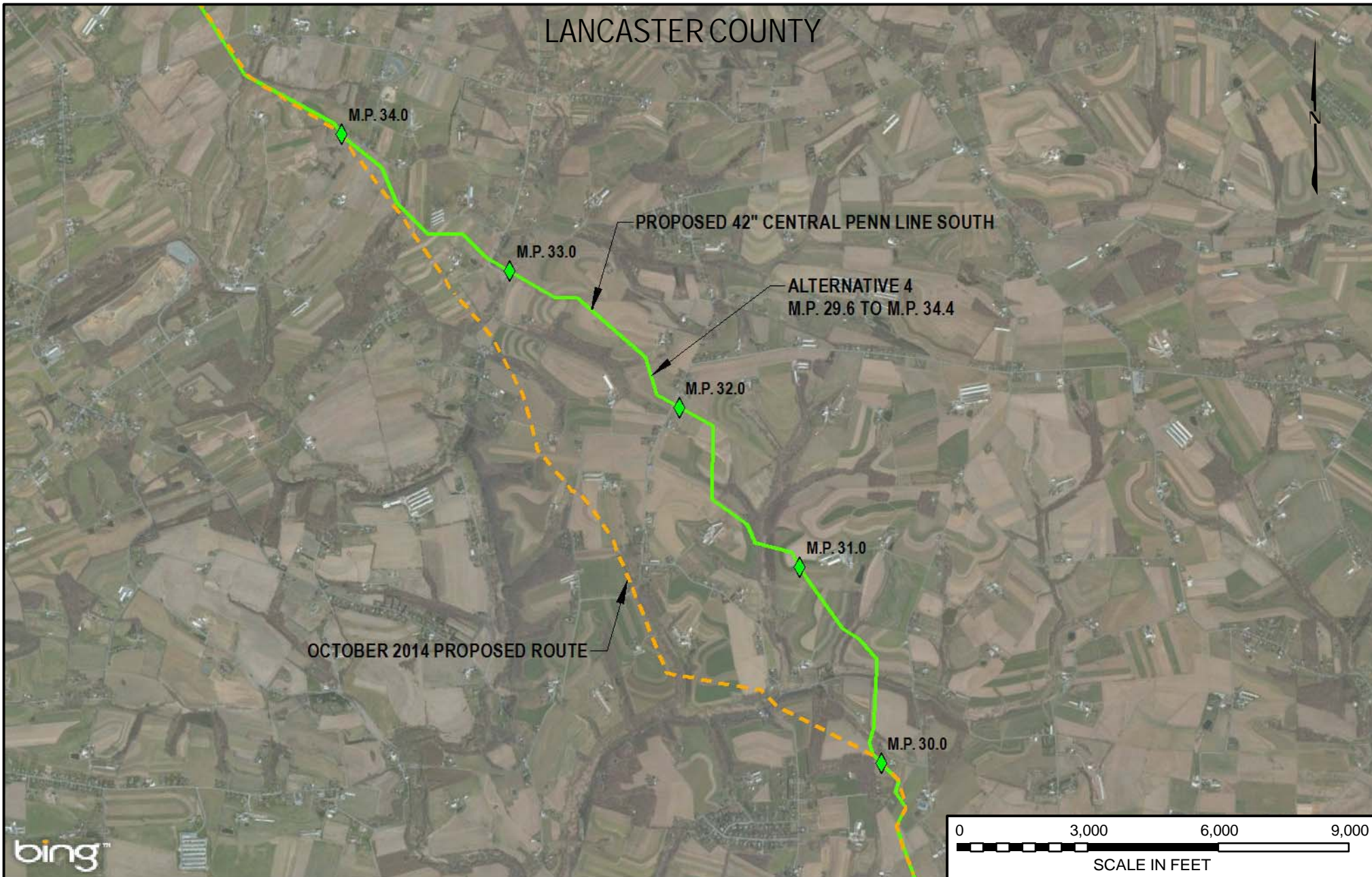


LANCASTER COUNTY



OCTOBER 2014 PROPOSED ROUTE

PROPOSED 42" CENTRAL PENN LINE SOUTH

ALTERNATIVE 4
M.P. 29.6 TO M.P. 34.4

LEGEND

- PROPOSED 42" CENTRAL PENN LINE SOUTH
- CPL SOUTH ALTERNATIVE 4
- - - OCTOBER 2014 PROPOSED ROUTE



**WOOD GROUP
MUSTANG, INC.**

DRAWING NO.		REFERENCE TITLE	
		FIGURE 10D-8	

TRANSCONTINENTAL GAS PIPE LINE COMPANY LLC
CPL SOUTH ALTERNATIVE 4
ATLANTIC SUNRISE PROJECT
PROPOSED 42" CENTRAL PENN LINE SOUTH
M.P. 29.60 TO M.P. 34.40
LANCASTER COUNTY, PENNSYLVANIA



NO.	DATE	BY	REVISION DESCRIPTION	W.O. NO.	CHK.	APP.	DRAWN BY:	DATE:	ISSUE FOR BID:	SCALE:
0	3/31/15	JTN	ISSUED FOR FERC FILING	1161503	DP	MJH	JTN	3/10/15	ISSUE FOR CONSTRUCTION:	1" = 3000'
							CHECKED BY:	DATE:	DRAWING NUMBER:	REVISION:
							MJH	3/10/15	F-AP-CPLS-A-63	0
							WO:	3:10 PM 3/23/2015		
							1161503			