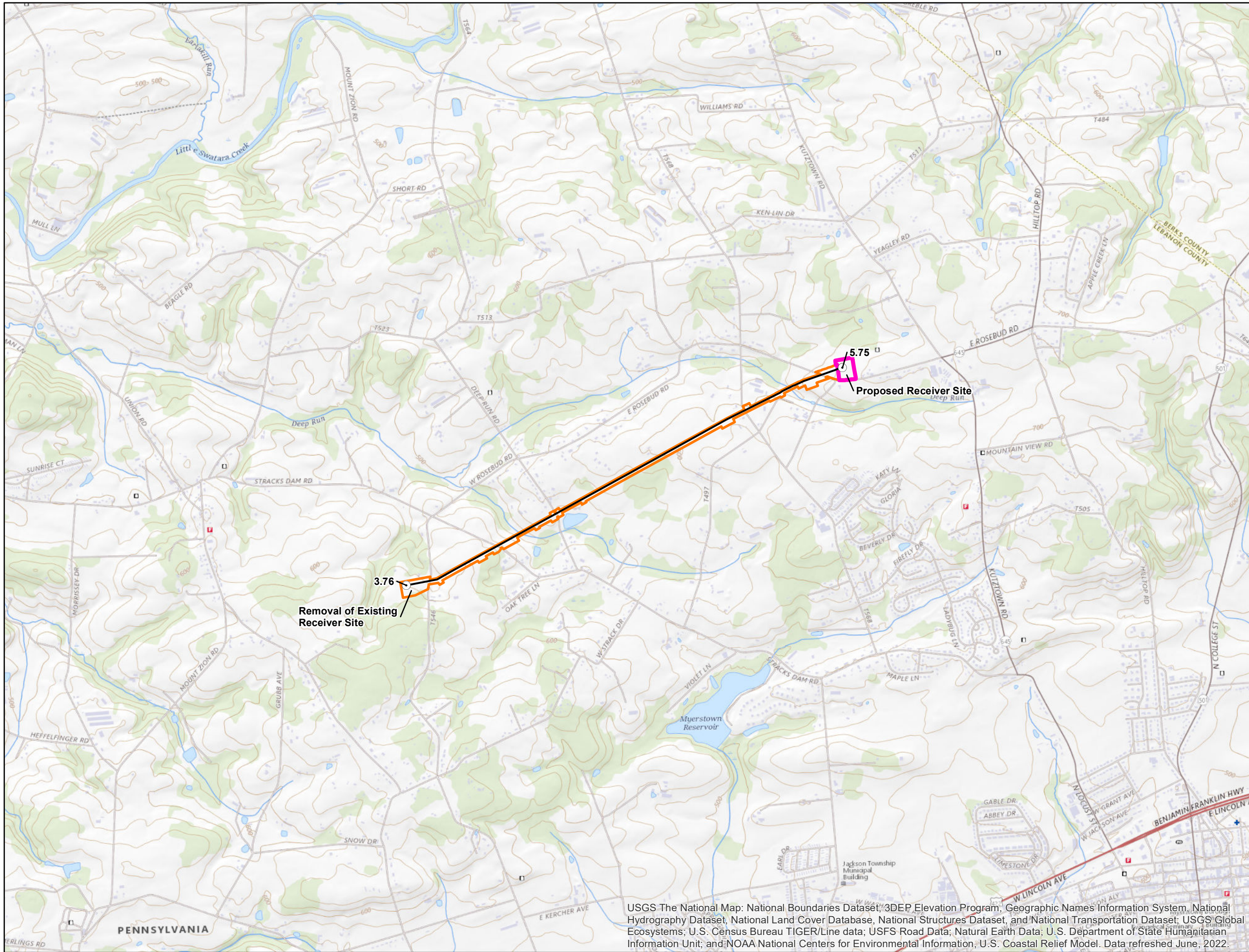


## **Section G – Site Location Map**

---





**Legend**

- Milepost
- Line 28 Loop
- ◻ Proposed Receiver Site Workspace
- ◻ Line 28 Loop Workspace

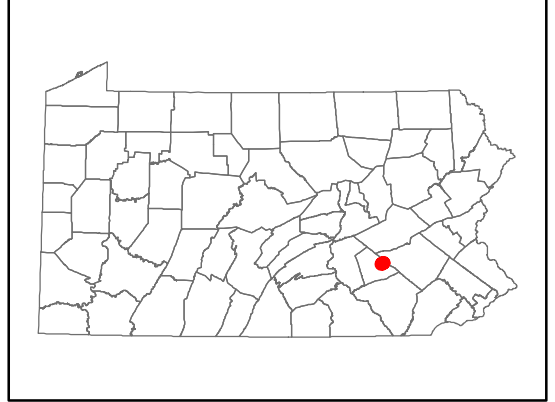


NAD 1983 State Plane Pennsylvania South  
 Projection: Lambert Conformal Conic  
 Linear Unit: US Foot

References:  
 USGS 7.5' Topographic Map:  
 Bethel, PA (2019)



1 inch = 2,000 feet

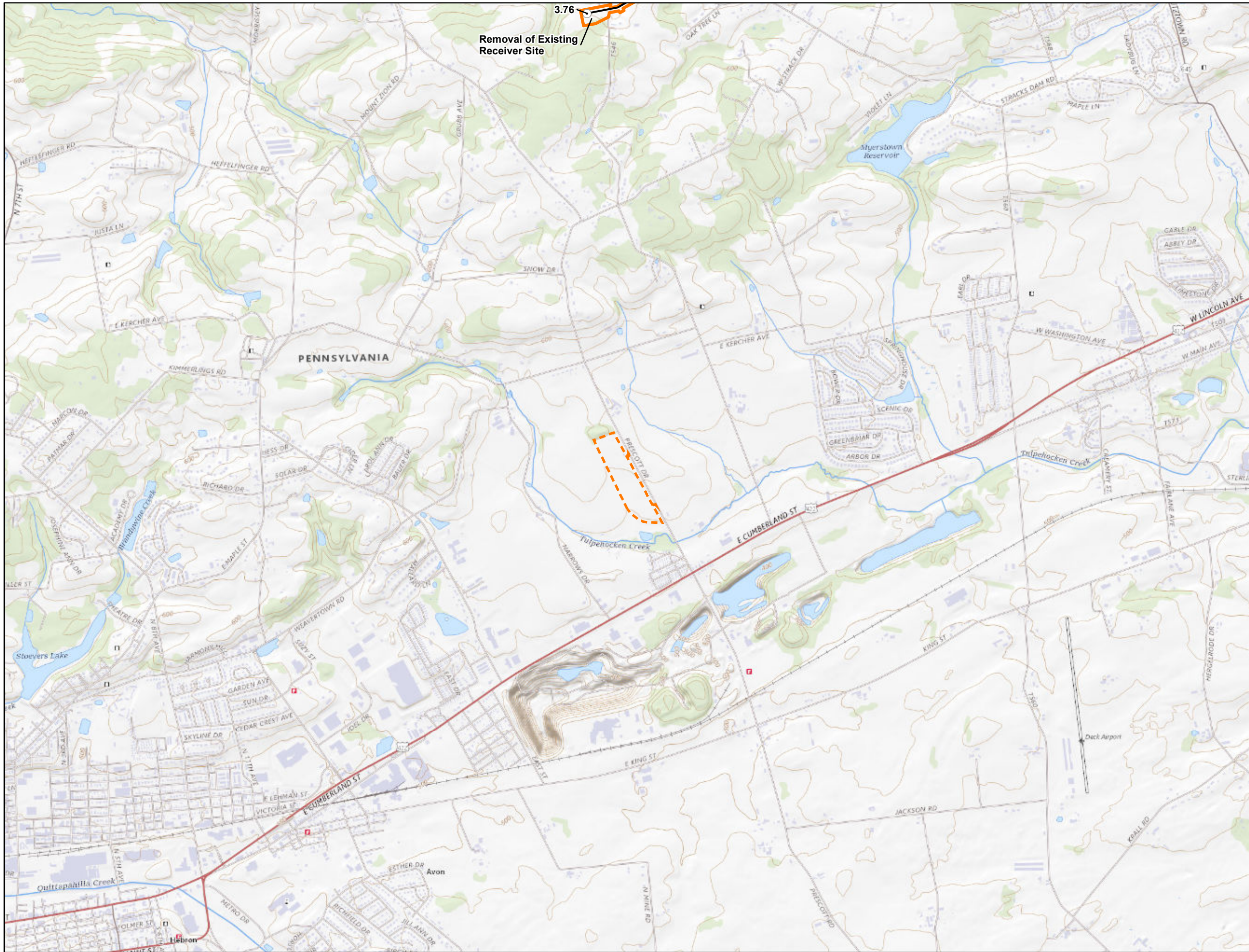


**Figure 1.1-1**  
**USGS Location Map**  
 Appalachia To Market II and Armagh and  
 Entriiken HP Replacement Projects  
 Texas Eastern Transmission, LP  
 Bethel & Jackson Townships,  
 Lebanon County, Pennsylvania

Prepared By: BSF	Checked By: SBI/CA
Job: 60673288	Date: 7/27/2022

USGS The National Map: National Boundaries Dataset, 3DEP Elevation Program, Geographic Names Information System, National Hydrography Dataset, National Land Cover Database, National Structures Dataset, and National Transportation Dataset; USGS Global Ecosystems; U.S. Census Bureau TIGER/Line data; USFS Road Data; Natural Earth Data; U.S. Department of State Humanitarian Information Unit; and NOAA National Centers for Environmental Information, U.S. Coastal Relief Model. Data refreshed June, 2022.



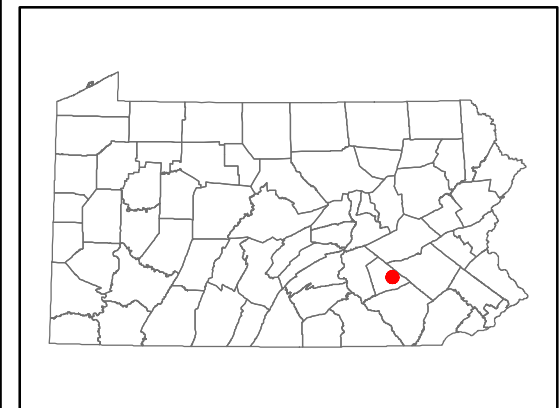
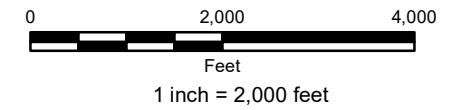


**Legend**

- Milepost
- Line 28 Loop
- Lebanon Yard Workspace
- Line 28 Loop Workspace

NAD 1983 State Plane Pennsylvania South  
 Projection: Lambert Conformal Conic  
 Linear Unit: US Foot

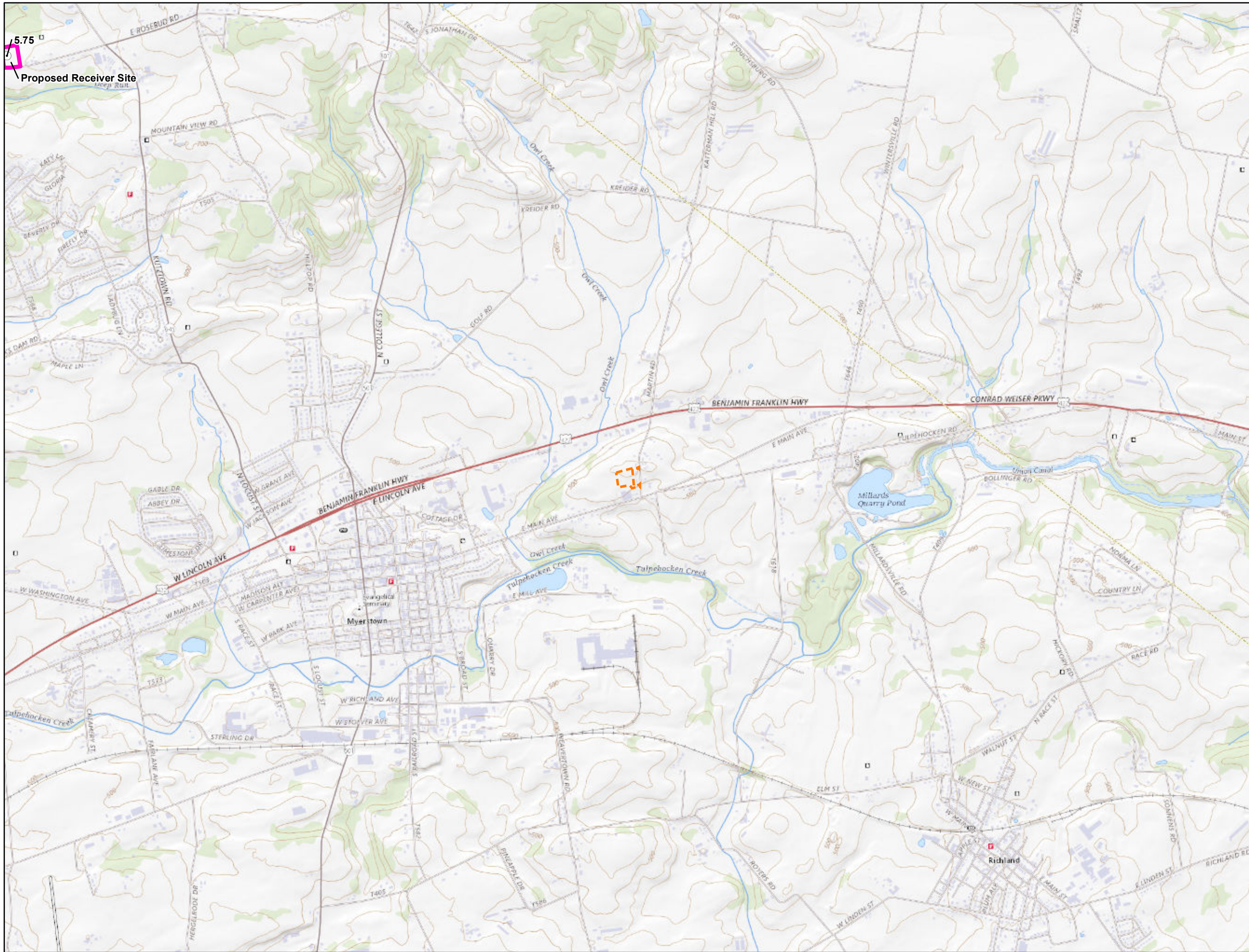
References:  
 USGS 7.5' Topographic Map:  
 Richland, PA (2019)



**Figure 1.3-7**  
**USGS Location Map of Lebanon Yard**  
 Appalachia to Market II and Armagh and  
 EntriKen HP Replacement Projects  
 Texas Eastern Transmission, LP  
 North Lebanon Township,  
 Lebanon County, Pennsylvania

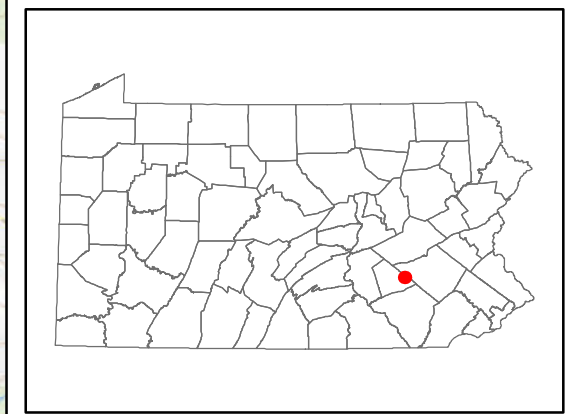
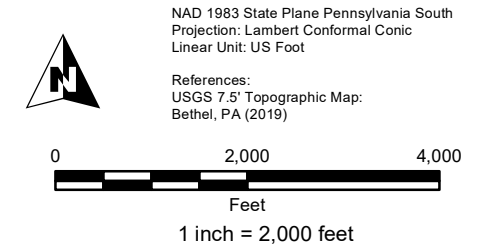
Prepared By: BSF	Checked By: SB/VD
Job: 60673288	Date: 6/22/2022







**Legend**

- Milepost
- Line 28 Loop
- Proposed Receiver Site Workspace
- Line 28 Loop Workspace
- Myerstown Yard Workspace



**Figure 1.3-9**  
**USGS Location Map of Myerstown Yard**  
 Appalachia To Market II and Armagh and  
 Entriken HP Replacement Projects  
 Texas Eastern Transmission, LP  
 Jackson Township,  
 Lebanon County, Pennsylvania

Prepared By: BSF	Checked By: SB/VD
Job: 60673288	Date: 6/22/2022