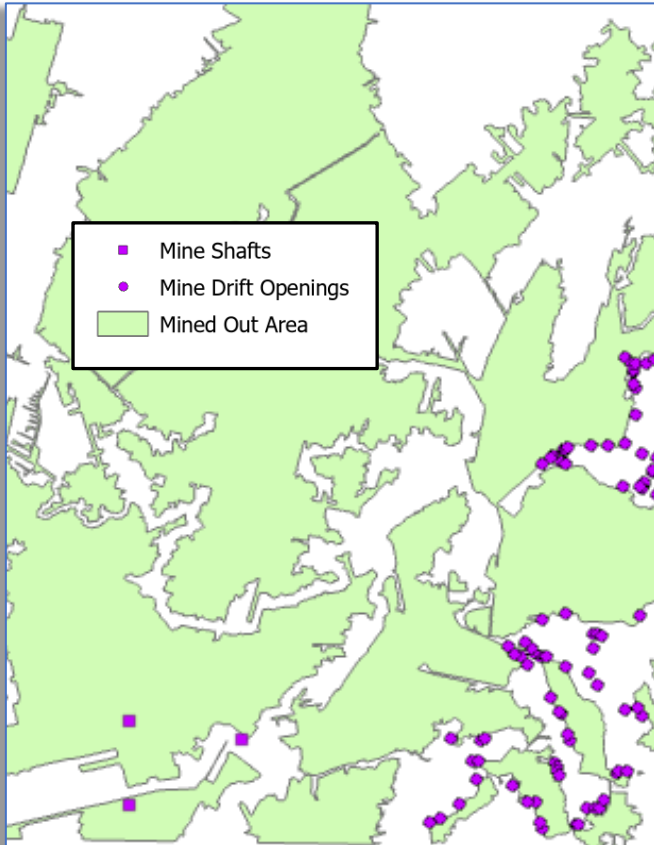
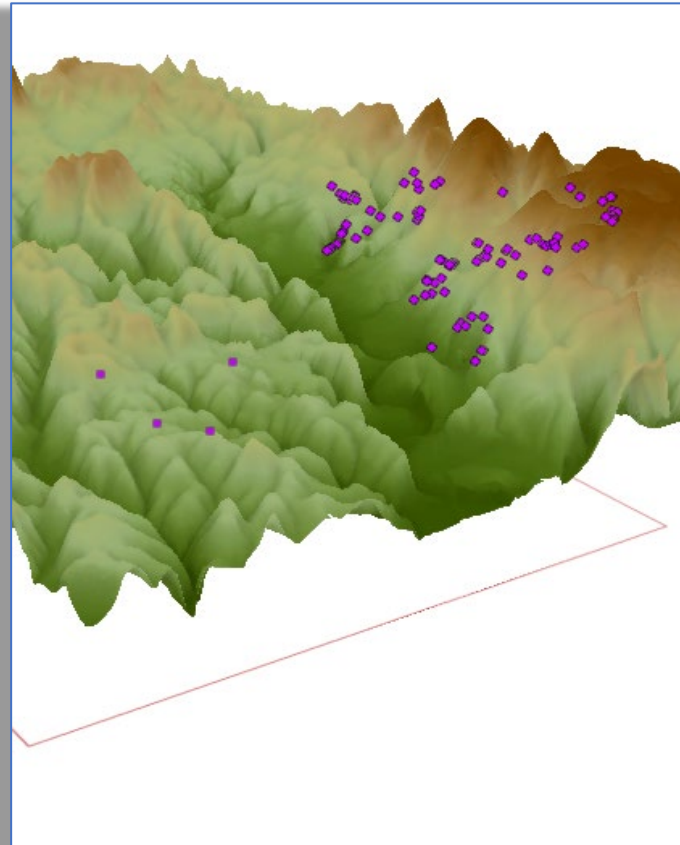


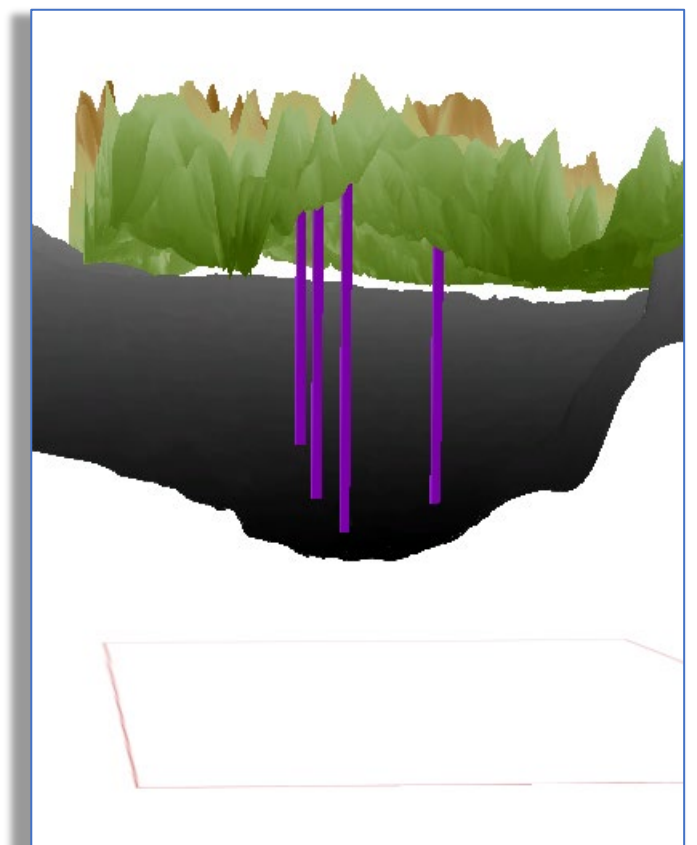
- Create 3D Mine Entry / Shaft Feature Classes



Mine entries were digitized/vectorized from georeferenced mine maps to create a point layer.



The point layer is “draped” over a surface elevation raster. Z-values are added to the points’ geometry.



The points representing vertical shafts are extracted and extruded between a surface elevation raster and a coal seam elevation raster, then exported as a 3D line feature class.